

NEWMAR | 2015 BAY STAR SPORT & BAY STAR



2015  
**BAY STAR SPORT  
& BAY STAR**

GAS MOTOR COACH



WHEN YOU KNOW THE DIFFERENCE <sup>SM</sup>

---

## THE GOOD LIFE AT AN AMAZING PRICE

OF ALL THE JOYS THAT COME FROM THE freedom of the open road, few can match the experience of taking that journey in a Newmar motor coach. And with the 2015 Bay Star Sport, price is no longer a roadblock on the route to Newmar quality and craftsmanship. At first glance, you'll know you're in for something special. A Full-Paint Exterior Graphic treatment with Clear Coat Finish makes a handsome statement, complete with matching color

exterior mirrors and Diamond Shield protection on the front cap. Straight-line driver and passenger windows, along with new frameless single pane windows, provide a smooth styling touch. All of which assures you'll earn more than passing glances as you're carried along on a Ford F-53 chassis built specifically for Newmar. Whether for weekends or for months on end, Bay Star Sport will take your family there in comfort and in style.







2015  
**BAY STAR  
SPORT**

GAS MOTOR COACH





COFFEE INTERIOR WITH EMPIRE GLAZED MAPLE CABINETRY - FLOOR PLAN 3309



---

## FLAWLESSLY CRAFTED TO PLEASE

The interior of the Bay Star Sport is both handsomely appointed and impressively practical. Flexsteel® Delux Leather furniture invites you to relax and take in the touches that make Newmar special, including striking diagonally-laid vinyl flooring and new carpet styling on slideout floors.

Ingenious new uses of space in the front cabin include a cup holder station that speedily transforms into a charming dinette table, plus a special extra that families will love: a fold-down bunk that effectively adds an extra bedroom for kids or guests.







- Three-burner range with metal oven door & Piezo Ignition
- Norcold® 6 cu. ft. refrigerator with black front panel
- 30" over-the range-microwave oven (on floor plan #3220)
- Laminate kitchen countertop with stainless steel sink



---

## A FULL MENU OF AMENITIES

The Bay Star Sport galley lets the family chef work his or her wonders in style. The countertops are roomy, the cabinetry is gorgeous and the storage is, well, everywhere.

Complementing the stainless steel sink and faux woven-grass backsplash are new laminate countertops with a more dimensional appearance and a striking granite look. Behind the cabinet doors of designer-glazed maple—in your choice of dark, medium and light finishes—are shelves that adjust to any pantry requirement. Now who's hungry?









---

## WITH NEWMAR, YOU ALWAYS REST ASSURED

The Bay Star Sport pays special attention to the place where you begin and end each day. In the bedroom, you can both rest and relax on the full queen bed, with a plush headboard and stately-looking pillows and bedspread, along with equally eye-catching entertainment from a facing optional LED TV.

Step into the bathroom for a refreshing respite. A full length mirror inside the door magnifies the space, handy cabinetry amplifies your storage, and the large shower enclosure bathes you in natural light from an overhead skylight.







TOFFEE EXTERIOR - FLOORPLAN 3309



## EXTERIOR DECOR

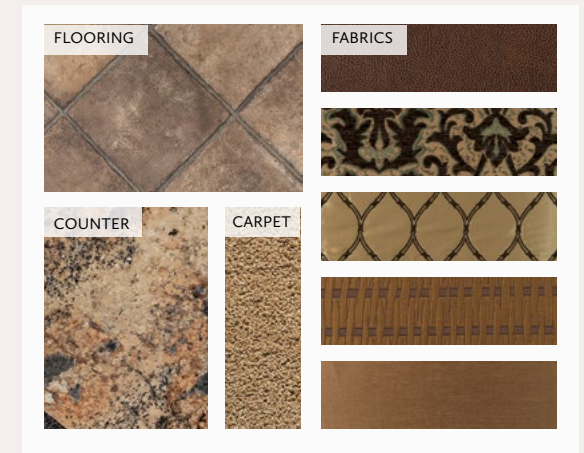


ANISE EXTERIOR

## INTERIOR DECOR



CARBON INTERIOR



COFFEE INTERIOR

## WOOD OPTIONS



TOFFEE EXTERIOR



BISQUE GLAZED  
MAPLE



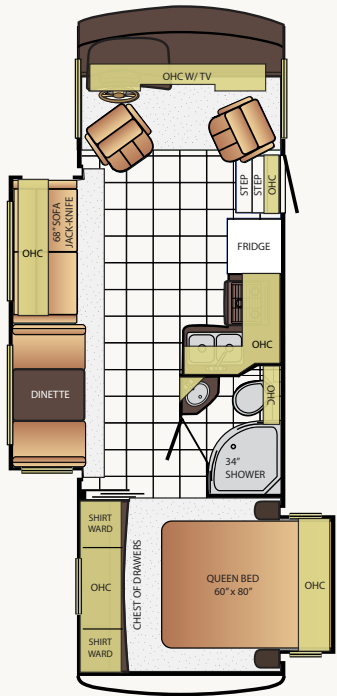
SIENNA GLAZED  
MAPLE



EMPIRE GLAZED  
MAPLE

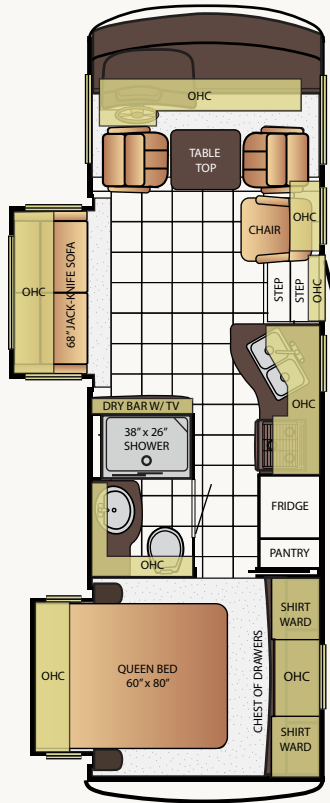


# BAY STAR SPORT FLOOR PLANS



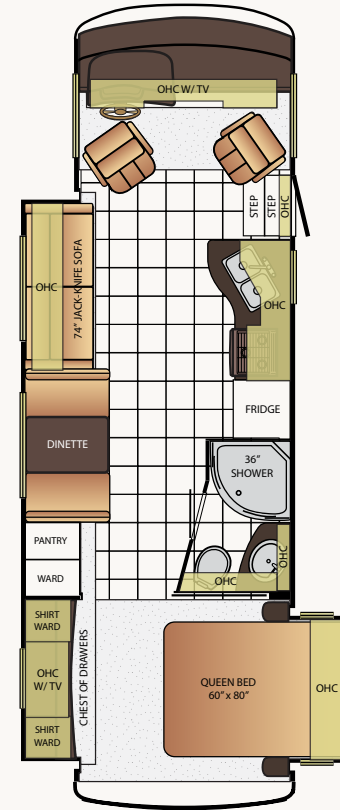
## 2702

App. Overall Length	27'10"
Width	101.5"
App. Overall Height	12'4"
Interior Width	95.5"
Interior Height	80"
Grey Tank	60 gal.
Sewage Tank	40 gal.
Water Tank	75 gal.
Propane Tank	25 gal.
Furnace	30,000 btu



## 2707

App. Overall Length	27'10"
Width	101.5"
App. Overall Height	12'4"
Interior Width	95.5"
Interior Height	80"
Grey Tank	60 gal.
Sewage Tank	40 gal.
Water Tank	75 gal.
Propane Tank	25 gal.
Furnace	30,000 btu

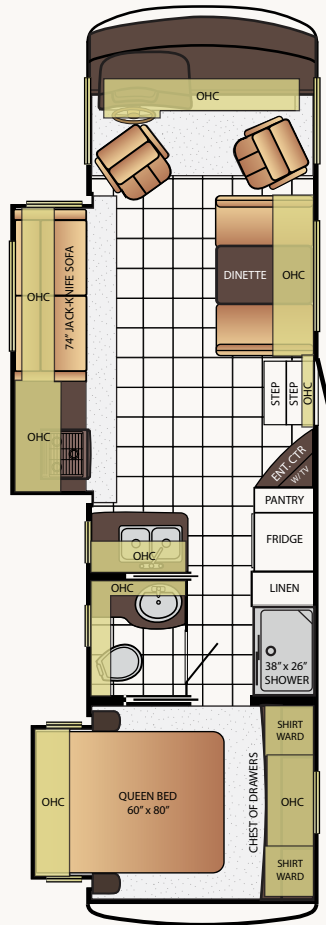


## 2903

App. Overall Length	29'11"
Width	101.5"
App. Overall Height	12'4"
Interior Width	95.5"
Interior Height	80"
Grey Tank	60 gal.
Sewage Tank	40 gal.
Water Tank	75 gal.
Propane Tank	25 gal.
Furnace	30,000 btu

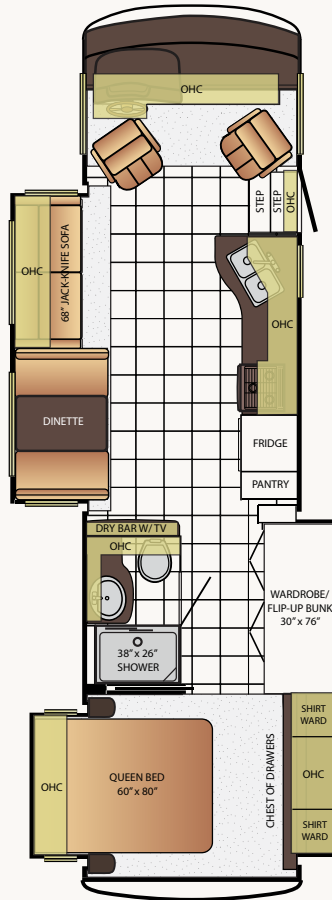


# BAY STAR SPORT FLOOR PLANS



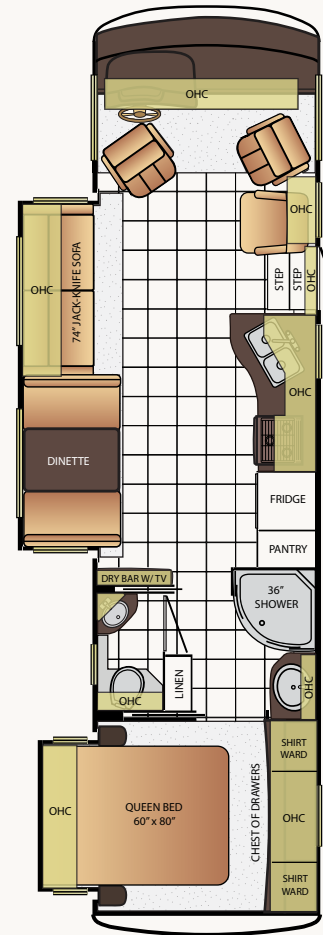
## 3220

App. Overall Length	32'11"
Width	101.5"
App. Overall Height	12'4"
Interior Width	95.5"
Interior Height	80"
Grey Tank	60 gal.
Sewage Tank	40 gal.
Water Tank	75 gal.
Propane Tank	25 gal.
Furnace	30,000 btu



## 3306

App. Overall Length	33'11"
Width	101.5"
App. Overall Height	12'4"
Interior Width	95.5"
Interior Height	80"
Grey Tank	60 gal.
Sewage Tank	40 gal.
Water Tank	75 gal.
Propane Tank	25 gal.
Furnace	30,000 btu

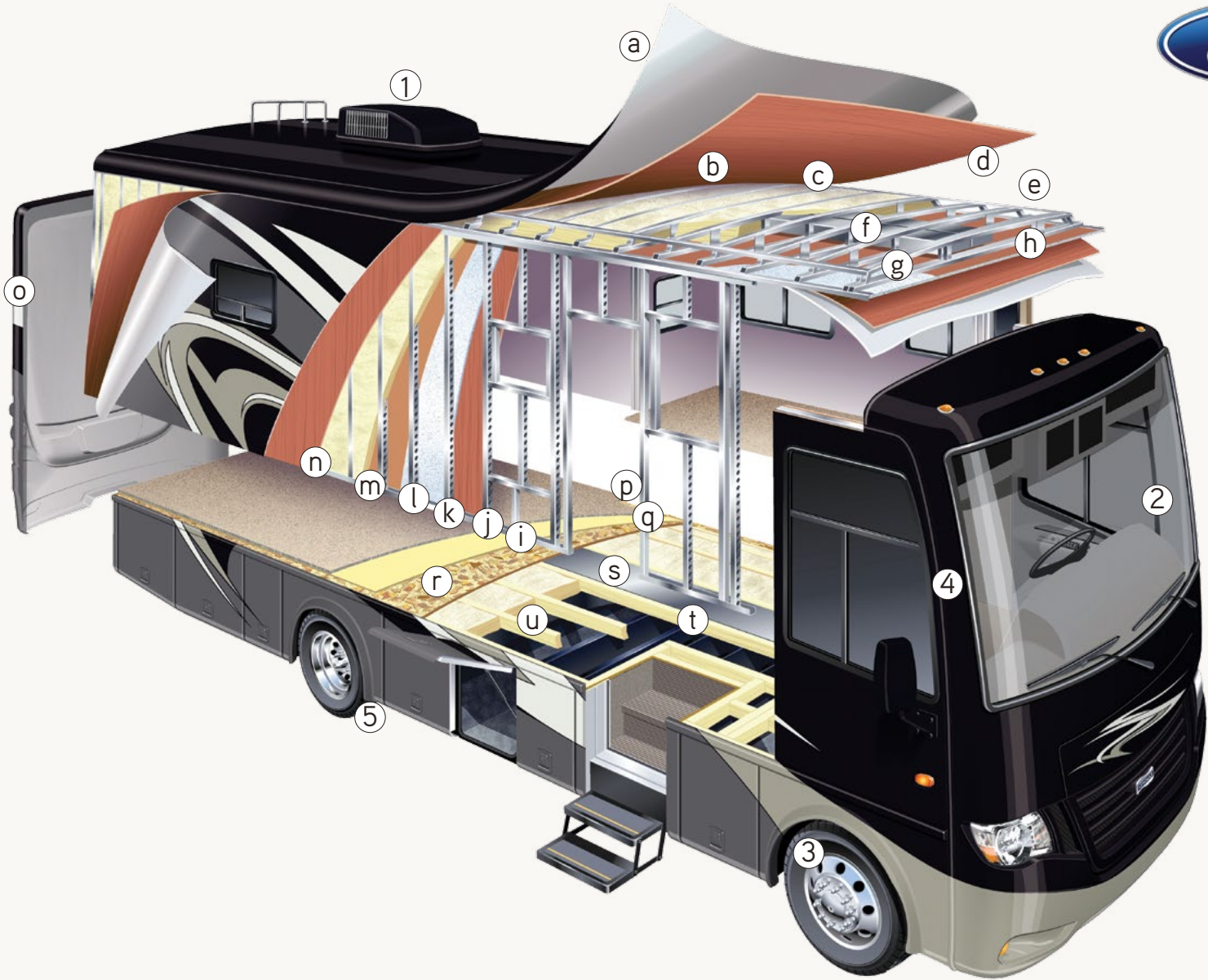


## 3309

App. Overall Length	33'11"
Width	101.5"
App. Overall Height	12'4"
Interior Width	95.5"
Interior Height	80"
Grey Tank	60 gal.
Sewage Tank	40 gal.
Water Tank	75 gal.
Propane Tank	25 gal.
Furnace	30,000 btu



# BAY STAR SPORT & BAY STAR CONSTRUCTION





LIKE A FINE HOME, Bay Star is framed 16 inches on center, allowing the best placement of outlets, switches and other components. Newmar uses only Sikaflex elastic adhesive throughout Bay Star's construction – one of the strongest bonding agents available. It seals against air and

water and helps dampen sound and vibration. Electrical wiring holes in Bay Star's aluminum frame are ringed with plastic grommets to protect wires from chafing. And Newmar's Total Comfort™ Central Air is two separate, fully ducted systems that distribute cool air and remove warm air.

**ROOF R-VALUE = 16**

- a. BriteTEK™ Roof (optional one-piece fiberglass roof)
- b. 9mm Wood Decking
- c. Fiberglass Batten Insulation
- d. A/C Ducting
- e. Aluminum Roof Truss
- f. Kraft Paper Vapor Barrier
- g. 5/8" Bead Foam
- h. 3/16" Panel
- i. Padded Vinyl Overlay

**SIDEWALL R-VALUE = 11**

- j. 3/16" Plywood Interior Wall
- k. 5/8" Bead Foam
- l. Kraft Paper Vapor Barrier
- m. Fiberglass Batten Insulation
- n. 3/16" Plywood Exterior Wall
- o. Composite One-Piece Gel Coat Exterior Sidewall
- p. 16" On Center Aluminum Framing with 3 1/2" Header

**FLOOR R-VALUE = 11**

- q. Carpet/Tile
- r. Carpet Padding
- s. 5/8" Floor Decking
- t. Fiberglass Batten Insulation
- u. 2" x 3" Wood Framing
- v. Polyethylene Moisture Barrier
- w. Foam Panels for Noise Protection
- x. Aluminum Ducting

- 1. 13.5M Penguin™ Heat Pump Central Air Conditioners (2)
- 2. One-Piece Windshield
- 3. Coated Aluminum Wheels
- 4. Double-Pane Tinted Safety Glass Windows
- 5. Side-Hinged Baggage Doors w/Optional Pullout Tray

## BAY STAR SPORT CHASSIS SPECIFICATIONS

Floor Plan	Engine HP	Axle Ratio	Fuel Cap.	Wheel Base	Front GAWR*	Rear GAWR*	Tag GAWR*	GVWR*	GCWR*	App. UVW	App. NCC
3309	362	5.38	80 gal.	208	7,500 lb.	13,500 lb.	0	20,500 lb.	26,000 lb.	16,525 lb.	3,975 lb.
3306	362	5.38	80 gal.	208	7,500 lb.	13,500 lb.	0	20,500 lb.	26,000 lb.	17,613 lb.	2,887 lb.
3220	362	5.38	80 gal.	200	7,500 lb.	13,500 lb.	0	20,500 lb.	26,000 lb.	16,825 lb.	3,675 lb.
3022	362	5.38	80 gal.	190	7,500 lb.	13,500 lb.	0	20,500 lb.	26,000 lb.	14,232 lb.	6,268 lb.
2903	362	5.38	80 gal.	190	7,500 lb.	13,500 lb.	0	20,500 lb.	26,000 lb.	16,204 lb.	4,296 lb.
2707	362	4.88	80 gal.	172	7,000 lb.	12,000 lb.	0	18,000 lb.	23,000 lb.	15,211 lb.	2,789 lb.
2702	362	4.88	80 gal.	172	7,000 lb.	12,000 lb.	0	18,000 lb.	23,000 lb.	15,175 lb.	2,825 lb.

Lengths, heights, widths and dry weights are approximate. Weight will vary based on optional equipment added to the above base weight.

**GAWR:** Gross Axle Weight Rating is the maximum permissible weight for an axle.

**GVWR:** Gross Vehicle Weight Rating is the maximum permissible weight for a fully loaded motor coach.

**GCWR:** Gross Combination Weight Rating is the value specified by the manufacturer of the vehicle as the maximum allowable loaded weight of this motor coach and any towed trailer or towed vehicle.

**UVW:** Unloaded Vehicle Weight is the weight of this motor coach as built at the factory with full fuel, engine oil and coolants. The UVW does not include cargo, fresh water, propane gas or dealer-installed accessories.

**NCC:** Net Carrying Capacity is the maximum weight of all occupants, including the driver, personal belongings, food, fresh water, waste water, propane gas, tools, tongue weight of towed vehicle, dealer-installed accessories, etc., that can be carried by the motor coach.

\*Specifications supplied by the chassis manufacturer.

# BAY STAR SPORT FEATURES & OPTIONS



## Chassis Features

*Built specifically for Newmar with the highest quality in handling, safety, performance and dependability.*

Ford® F-53 Chassis 18,000 lb. on 27' Floorplans

Ford® F-53 Chassis 20,500 lb. on 29'-33' Floorplans

Cruise Control

Tilt Steering Wheel

Stainless Steel Wheel Simulators



## Air Conditioning & Heating

*Total Comfort Air Conditioning and Hydronic Zone Heating systems make climate control simple and effective.*

13.5M Brisk® Central Air Conditioner

Dash Heater and Air Conditioner

Propane Gas Furnace with Ducted Heat

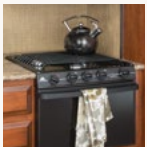
Propane Leak Detector

### OPTIONS

15.0M Penguin™ Heat Pump Central Air Conditioner

Driver & Passenger Overhead Dash Fans

Two 13.5 Penguin Heat Pump A/C, 5.5 Onan Generator, 50 Amp Electrical Service with Energy Management System



## Appliances

*All of the amenities of a fine home are integrated in the Newmar design, in form and capabilities.*

Three-Burner Range Oven

Range Hood with Light and Fan

Microwave

Dometic® 6 Cf. Refrigerator with Wood Paneling Front

6 gal. Gas Water Heater with Direct Spark Ignition



## Audio, Video & Accessories

*Stay entertained on the road and off, with spectacular visual and sound options from industry leaders.*

LED TV in Living Area (TV sizes vary per floorplan)

AM/FM Dash Radio with CD Player

Rearview Colored Monitor System with Audio

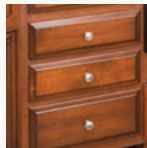
Winegard Digital TV Antenna

### OPTIONS

29" LED TV in Bedroom

DVD Player with Coax Switcher

Satellite Dish Prep on Roof



## Cabinets & Furniture

*Amish craftsmanship and elegance in design meld the wood cabinetry and furniture seamlessly with the Newmar interior.*

Empire Maple Mitered Designer Glazed Cabinet Doors

Concealed Hinges on Cabinet Doors

Residential-Style Full-Extension Ball Bearing Drawer Guides

Laminate Kitchen Countertop with Stainless Steel Sink

Laminate Countertop on Bedroom Nightstands and Chests

Laminate Countertop in Bathroom with Acrylic Sink

Flexsteel® Delux Leather Furniture

Lifts on Bed Top

Smooth-Top Mattress

### OPTIONS

Bisque Maple Mitered Designer Glazed Cabinets

Sienna Maple Mitered Designer Glazed Cabinets

Drop Down Bunk Bed Over Driver/Passenger Seats

Plush Pillow Top Mattress

Fold & Tumble Sofa with Air Mattress



## Electrical Features

*A Newmar coach's electrical and lighting system is designed for maximum reliability, functionality, and style.*

4.0 kW Cummins Onan® Generator with Remote Switch and Automatic Changeover

30 Amp Electrical Service with Flexible Cord and Automatic Transfer Switch

Two 12 Volt House Batteries

Manual Battery Disconnect Switch for House Battery

110 Volt Exterior Receptacle

12 Volt Auxiliary Receptacle on Dashboard

45 Amp Converter

Daytime Running Lights

Emergency Start Switch

Incandescent Ceiling Lights Throughout

Manually Operated Hold-To-Run Slideout Switch

Cable TV Connection

### OPTIONS

600 Watt Inverter for Living Area and Bedroom TVs



## Exterior Features

*The Full-Paint Masterpiece Finish is one of the most beautiful and durable in the industry.*

Full Painted Exterior Masterpiece Finish Graphics with Clearcoat Finish and Diamond Shield Protection on Front Cap

Lighted Exterior Storage Compartments with Cargo Liner

Automatic Step for Entrance Door

Convex Exterior Mirrors

Lighted Exterior Storage Compartments Finished with Cargo Liner

Rear Hitch for Towing Car

Assist Handle at Entrance Door

Undercoating

Mud Flaps



## OPTIONS

Convex Exterior Mirrors with Defrost and Remote Control

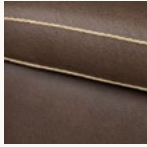
---

Hydraulic Leveling Jacks

---

Rear Ladder

---



## Interior Features

*Flooring – both tile and carpet – is installed with Newmar’s own in-house process, ensuring the best in quality and longevity, as well as the finest fit.*

Vinyl Ceiling Panels

---

Pleated Window Shades

---

Decorative Wall Art

---

Mini Blinds in Kitchen and Bathroom Windows

---

Vinyl Floor in Kitchen, Living Area and Bathroom

---

Carpeting in Bedroom and on Slideout floors

---

Interior Assist Handle at Main Entrance Door

---

Quilted Bedspread, Bed Scarf & Accent Pillow

---

Inlaid Six Panel Design Interior Passenger Doors

---

Auto Motion Power Shade at Windshield & Manual Shades at Driver & Passenger Side Windows

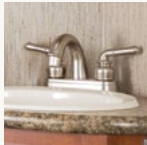
---

Dash Panel Color Coordinated ABS

---

10 Bc Fire Extinguisher, Smoke Detector and Carbon Monoxide Detector

---



## Plumbing & Bath Features

*The Demand Water System’s residential flow response ensures that the comfort and reliability of home are never far away.*

Demand Water System

---

Sewage Holding-Tank Rinse

---

Water Heater Bypass System

---

Dometic® China Bowl Stool

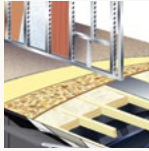
---

ABS Shower Surround with Shower Door

---

Systems Monitor Panel

---



## Construction Features

*From the chassis on up, Newmar coaches are built to be dependable, durable, comfortable, and beautiful.*

BriteTEK™ Roof with Walkable Decking

---

Gelcoated Fiberglass Exterior Sidewalls, Front & Rear Caps

---

Aluminum-Frame Sidewalls & Roof Construction, on 16” Center

---

5/8” Foam Insulation Laminated in Sidewalls & Ceiling

---



## Windows, Awnings, & Vents

*Experience as much – or as little – of the outdoors as you want in comfort and style.*

One Piece Bonded Tinted Windshield

---

Frameless Single Pane Tinted Safety-Glass Windows

---

Power Vent in Bathroom

---

Skylight Above Shower

---

Dometic® 8500 Side Awning

---

## OPTIONS

Two Slideout Covers

---

Frameless Double-Pane Tinted Safety Glass Windows

---

Dometic® 9100 Side Awning

---

Rear Window in Bedroom

---

Power Vent in Kitchen

---

Bunk Windows\*

---

\*Check With Dealership On Floorplan Availability

---

## EQUAL PARTS AWESOME AND AFFORDABLE

WHAT'S WAITING AT THE END OF your next road? When you own a Newmar, that hardly matters, because you're likely to be enjoying the journey more than the destination. And with the 2015 Bay Star, you get a gas motor coach with all the quality touches that Newmar is known for, at a price that's equally agreeable. The Bay Star exterior offers no compromises in fit, finish and appeal. All new graphics and colors underscore the Full-Paint Masterpiece™

Finish, applied by Newmar artisans to protect and enhance the stunning appearance. And thanks to a Ford 22,000 lb. chassis on larger tires and aluminum wheels, this year's taller Bay Star delivers a high-end profile that's only improved by aerodynamic frameless single pane windows and upgraded chrome logos. If you're a traveler ready to take the wheel of a legendary name in motor coach quality, Bay Star will get you there as only a Newmar can.







2015  
**BAY STAR**

GAS MOTOR COACH





POTOMAC INTERIOR WITH BISQUE GLAZED MAPLE CABINETRY - FLOOR PLAN 3401



---

## ALL NEW, ALL NEWMAR

The Bay Star interior is livability personified. The fresh Potomac décor is both bright and roomy, with new furniture styling and custom vinyl tiling made exclusively for Newmar.

The galley boasts not only new chrome hardware on all fixtures, a wholly redesigned metal-look backsplash, and dimensional laminate on countertops, but also an extendable booth dinette that creates a cozy nook for meals and more.







---

## MAKE YOURSELF COMFORTABLE

You'll rarely find a king bed in a coach this affordable. Yet Bay Star offers that option in several floorplans, complemented by a solid wood-framed headboard and Newmar's signature custom-tailored cabinetry.

And the bedclothes are so attractive, with a plush comforter and matching pillow shims, you may not want to disturb them when it's time to turn in.



When the night is young, you can turn to entertainment from the facing Sony® HDTV system, now with the option of Blu-Ray DVD for a simply spectacular view. Matching shirt wardrobes flank your screen, with ample drawer space to make clothing storage a breeze.

Finally, you can retire to the Bay Star's bath and enjoy the spacious 36" x 36" radius shower, a charming vanity with new chrome finish fixtures and pull-out footstool, plus a large medicine cabinet that's roomy enough for the whole family.

- Hardwood headboard with vinyl weave inlay
- Sony® LED TV and Blu-Ray DVD player\*
- Demand Water System with residential flow response
- 6 gal. Gas/electric water heater with electronic ignition

\*Optional

**SONY®**











INCA TAN INTERIOR WITH BISQUE GLAZED MAPLE CABINETRY AND OPTIONAL SOLID SURFACE COUNTER TOP - FLOOR PLAN 3402





---

## NOTHING SAYS WELCOME HOME LIKE NEWMAR

With three wall slides, the new 3402 floorplan offers the ultimate representation of Bay Star styling and versatility, including extra deep space on the door side that accommodates both a U-shaped dinette as well as a 48" Sony® LED TV that faces a lush 84" sofa to seat both friends and family.

Even better, the dinette booth cleverly converts into an extra bed, perfect for those occasions when you wish to grace guests with your hospitality.





“

Bay Star delivers a relaxed ride at a comfortable price.”



## EXTERIOR DECOR



MERRIMAC EXTERIOR

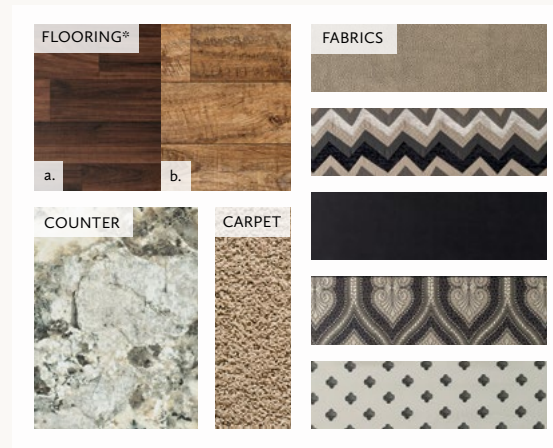


MAYAN GOLD EXTERIOR

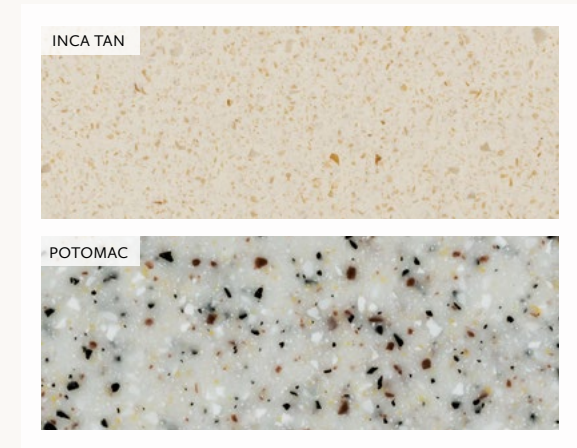
## INTERIOR DECOR



INCA TAN INTERIOR



POTOMAC INTERIOR



OPTIONAL COUNTER TOPS

\*Flooring option a. pairs with Empire Glazed Maple wood and flooring option b. pairs with Bisque Glazed Maple or Sienna Glazed Maple woods



## WOOD OPTIONS



### BISQUE GLAZED MAPLE

\*Pairs with flooring option b.



### SIENNA GLAZED MAPLE

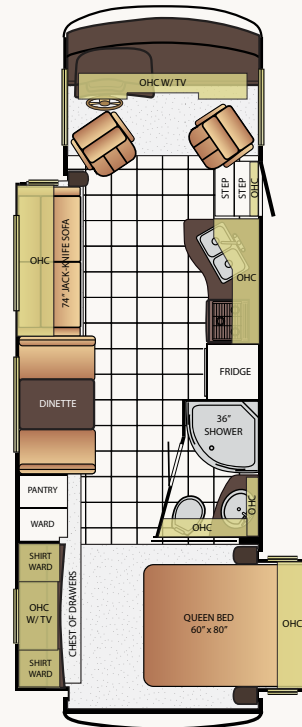
\*Pairs with flooring option b.



### EMPIRE GLAZED MAPLE

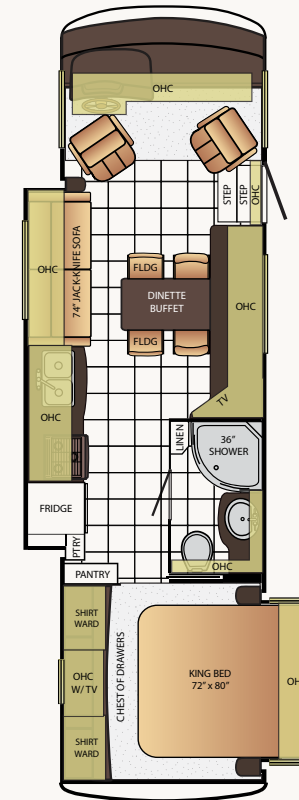
\*Pairs with flooring option a.

## BAY STAR FLOOR PLANS



### 2903

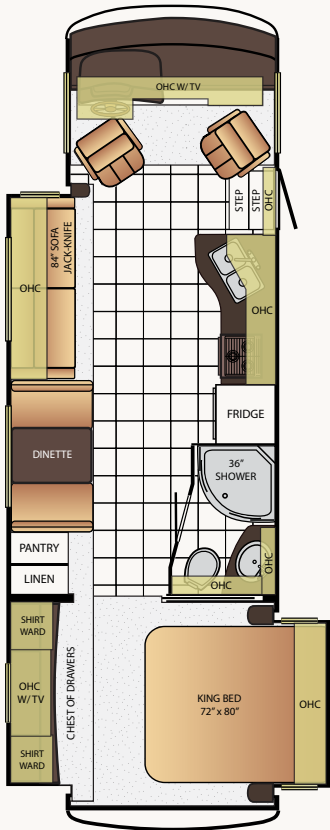
App. Overall Length	29'11"
Width	101.5"
App. Overall Height	12'8"
Interior Width	95.5"
Interior Height	80"
Grey Tank	60 gal.
Sewage Tank	40 gal.
Water Tank	75 gal.
Propane Tank	25 gal.
Furnace	40,000 btu



### 3103

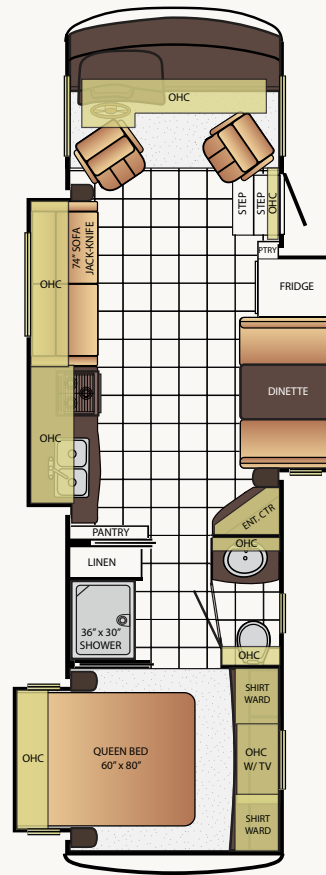
App. Overall Length	31'11"
Width	101.5"
App. Overall Height	12'8"
Interior Width	95.5"
Interior Height	80"
Grey Tank	60 gal.
Sewage Tank	40 gal.
Water Tank	75 gal.
Propane Tank	25 gal.
Furnace	40,000 btu

# BAY STAR FLOOR PLANS



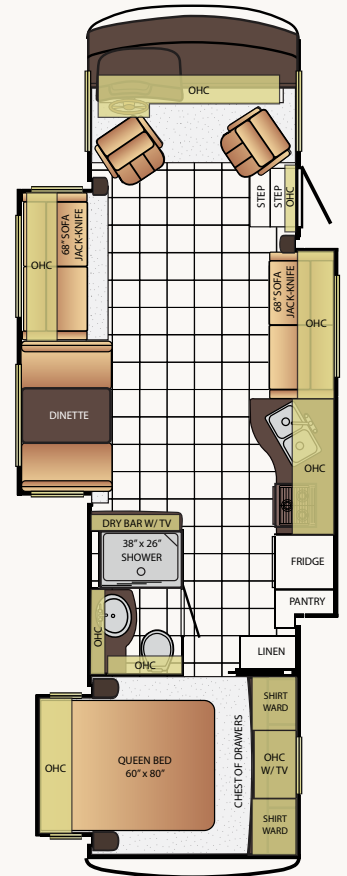
## 3124

App. Overall Length	31'11"
Width	101.5"
App. Overall Height	12'8"
Interior Width	95.5"
Interior Height	80"
Grey Tank	60 gal.
Sewage Tank	40 gal.
Water Tank	75 gal.
Propane Tank	25 gal.
Furnace	40,000 btu



## 3215

App. Overall Length	32'11"
Width	101.5"
App. Overall Height	12'8"
Interior Width	95.5"
Interior Height	80"
Grey Tank	60 gal.
Sewage Tank	40 gal.
Water Tank	75 gal.
Propane Tank	25 gal.
Furnace	40,000 btu

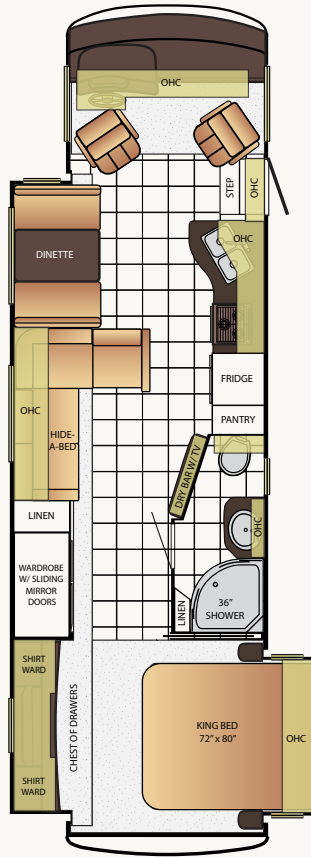




# BAY STAR FLOOR PLANS

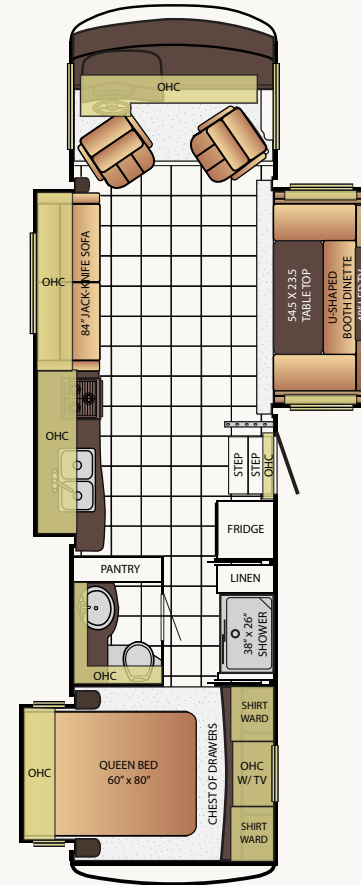
## 3308

App. Overall Length	33'11"
Width	101.5"
App. Overall Height	12'8"
Interior Width	95.5"
Interior Height	80"
Grey Tank	60 gal.
Sewage Tank	40 gal.
Water Tank	75 gal.
Propane Tank	25 gal.
Furnace	42,000 btu



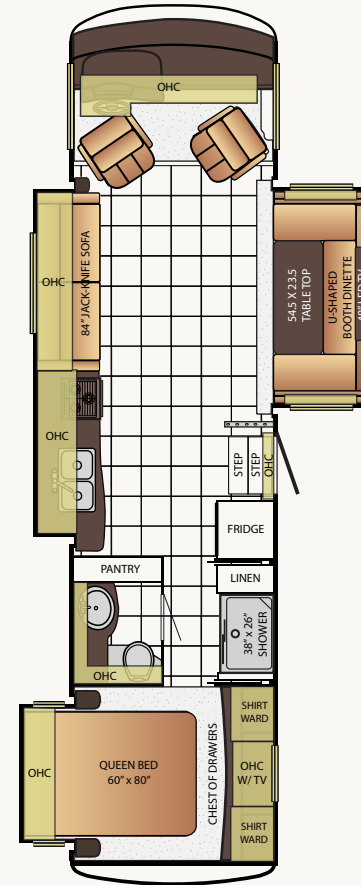
## 3401

App. Overall Length	34'11"
Width	101.5"
App. Overall Height	12'8"
Interior Width	95.5"
Interior Height	80"
Grey Tank	60 gal.
Sewage Tank	40 gal.
Water Tank	75 gal.
Propane Tank	25 gal.
Furnace	40,000 btu



## 3402

App. Overall Length	34'11"
Width	101.5"
App. Overall Height	12'8"
Interior Width	95.5"
Interior Height	80"
Grey Tank	60 gal.
Sewage Tank	40 gal.
Water Tank	75 gal.
Propane Tank	25 gal.
Furnace	40,000 btu



# BAY STAR FEATURES & OPTIONS



## Chassis Features

*Built specifically for Newmar with the highest quality in handling, safety, performance and dependability.*

Ford F-53 22,000 lb.

Hydraulic Leveling Jacks with Automatic Control

Cruise Control

Tilt Steering Wheel

Stainless Steel Wheel Simulators



## Air Conditioning & Heating

*Total Comfort Air Conditioning and Hydronic Zone Heating systems make climate control simple and effective.*

13.5M Brisk® Central Air Conditioner

Driver/Passenger Overhead Dash Fans

Dash Heater and Air Conditioner

Propane Gas Furnace with Ducted Heat

Propane Gas Leak Detector

### OPTIONS

15.0M Penguin™ Heat Pump Central Air Conditioner

Auxiliary Heater in Bedroom

Two 13.5M Penguin Heat Pump A/C, 5.5 Onan Generator, 50 Amp Electrical Service with Energy Management System



## Appliances

*All of the amenities of a fine home are integrated in the Newmar design, in form and capabilities.*

Three-Burner Range Oven

Bi-Fold Range Cover of Matching Countertop Material

Norcold® 8 Cf.. Refrigerator with Black Front Panel

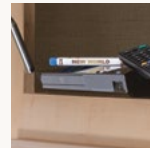
30" Over the Range Microwave Oven

6 gal. Gas/Electric Water Heater with Electronic Ignition

### OPTIONS

Frigidaire® 10 Cf. Refrigerator with Dedicated 1000 Watt Pure Sine Inverter and 2 Extra Batteries

30" Convection Microwave with 3 Burner Cooktop



## Audio, Video & Accessories

*Stay entertained on the road and off, with spectacular visual and sound options from industry leaders.*

Sony® LED TV and DVD Player in Living Area and Bedroom (TV sizes vary per floorplan)

AM/FM Dash Radio with CD Player and Bluetooth™

Rearview Colored Monitor System with Audio

Winegard Digital TV Antenna

Satellite Prep On Roof

### OPTIONS

Sony® 32" LED TV in Front Overhead

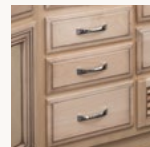
Sirius® Satellite Radio Capability with Antenna (does not include monthly subscription)

Sony® Surround Sound with Sub-Woofer

Winegard Automatic Satellite Dish (does not include receiver)

High-Definition Wiring with Blu-Ray DVD Player

Sideview Cameras



## Cabinets & Furniture

*Amish craftsmanship and elegance in design meld the wood cabinetry and furniture seamlessly with the Newmar interior.*

Empire Maple Mitered Designer Glazed Cabinet Doors

Concealed Hinges on Cabinet Doors

Laminate Kitchen Countertop with Stainless Steel Sink and Two Sink Covers

Laminate Countertop on Bedroom Nightstands and Chests

Laminate Countertop in Bathroom with Acrylic Sink

Residential-Style Full-Extension Ball Bearing Drawer Guides

Pull-out Pantry Shelves\*

Flexsteel® Ultralux Leather Furniture

Passenger Seat Work Station

Lifts on Bed Top

Smooth-Top Mattress

### OPTIONS

Bisque Maple Mitered Designer Glazed Cabinet Doors

Sienna Maple Mitered Designer Glazed Cabinet Doors

Six way Power Driver's Seat

Combination Desk/Dinette with Buffet Dinette Table with Four Chairs (Two Fixed, Two Folding)

Combination Desk/Dinette with Free Standing Hidden Leaf Table with Four Chairs (Two Fixed, Two Folding)

Free Standing Hidden-Leaf Dinette Table with Four Chairs (Two Fixed, Two Folding)\*

Hide-A-Bed Sofa on Off Door Side

Off Door Side Fold & Tumble Sofa with Air Mattress

Drop Down Bunk Bed Over Driver/Passenger Seats

Plush Pillow Top Mattress

Under Mounted Solid Surface Kitchen Base Countertop with Under-mounted Sink and Upgraded Faucet



## Electrical Features

*A Newmar coach's electrical and lighting system is designed for maximum reliability, functionality, and style.*

4.0 kW Cummins Onan® Generator with Remote Switch and Automatic Changeover

30 Amp Electrical Service with Flexible Cord and Automatic Transfer Switch

Two 12 Volt House Batteries

Battery Disconnect Switch for House Battery

110 Volt Exterior Receptacle

12 Volt Auxiliary Receptacle on Dashboard

5 Watt Solar Panel to Charge Chassis Battery

45 Amp Converter

Daytime Running Lights

Emergency Engine Start Switch

L Ceiling Lights Throughout

Lighted Wardrobe



Manually Operated Hold-To-Run Slideout Switch  
Receipt with Built in USB Charger at Passenger Seat Area

#### OPTIONS

600 Watt Inverter for Living Area and Bedroom TVs  
Solar Prep Wire From Roof to Charge House Batteries  
50 Amp Electrical Service with Flexible Cord and Automatic Transfer Switch



### Exterior Features

*The Full-Paint Masterpiece Finish is one of the most beautiful and durable in the industry.*

Full-paint Masterpiece Finish™ with Diamond Shield Protection on Front Cap  
Convex Exterior Mirrors with Defrost  
Automatic Step for Entrance Door  
Lighted Exterior Storage Compartments with Cargo Liner  
Rear Hitch for Towing Car  
Assist Handle at Entrance Door  
Undercoating  
Mud Flaps

#### OPTIONS

Convex Exterior Mirrors with Defrost and Remote Control  
Rear Ladder



### Interior Features

*Flooring – both tile and carpet – is installed with Newmar's own in-house process, ensuring the best in quality and longevity, as well as the finest fit.*

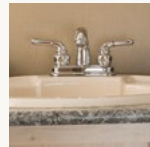
Padded Vinyl Ceiling  
Day/Night Pleated Window Shades and Lambrequins  
Decorative Wall Art  
Mini Blinds in Kitchen and Bathroom Windows  
Vinyl Floor in Kitchen, Living Area and Bathroom  
Carpeting in Bedroom and on Slideout floors  
Interior Assist Handle at Main Entrance Door  
Shoe Storage Located in Entrance Step Compartment  
Quilted Bedspread with Bed Scarf & Accent Pillow  
Inlaid Six Panel Design Interior Passenger Doors

Auto Motion Power Shade at Windshield & Manual Shades at Driver & Passenger Side Windows

Dash Panel Color Coordinated ABS  
10 Bc Fire Extinguisher, Smoke Detector and Carbon Monoxide Detector

#### OPTIONS

Vinyl Tile Floor in Kitchen, Living Area and Bathroom in Replace of Vinyl Floor  
Auto Motion Manual Window Shades



### Plumbing & Bath Features

*The Demand Water System's residential flow response ensures that the comfort and reliability of home are never far away.*

Demand Water System  
Sewage Holding-Tank Rinse  
Water Heater Bypass System  
Dometic® China Bowl Stool  
ABS Shower Surround with Shower Door  
Exterior Shower  
Systems Monitor Panel

#### OPTIONS

110 Volt Heat Pads for Holding Tanks



### Construction Features

*From the chassis on up, Newmar coaches are built to be dependable, durable, comfortable, and beautiful.*

BriteTEK™ Roof with Walkable Decking  
Gelcoated Fiberglass Exterior Sidewalls, Front & Rear Caps  
Aluminum-Frame Sidewalls & Roof Construction, 16" on Center  
5/8" Foam Insulation Laminated in Sidewalls & Ceiling

#### OPTIONS

Polar Pak R19 Batten Insulation in Roof



### Windows, Awnings, & Vents

*Experience as much – or as little – of the outdoors as you want in comfort and style.*

One Piece Tinted Windshield  
Frameless Single Pane Tinted Safety-Glass Windows  
Power Vent in Bathroom and Kitchen  
Skylight above Shower  
Dometic® 8500 Side Awning with Aluminum Weather Shield  
Dometic® Slideout Covers

#### OPTIONS

Frameless Double-Pane Tinted Safety Glass Windows  
Dometic® Weather Pro Side Awning with Aluminum Weather Shield  
Rear Window in Bedroom  
Kitchen Window

*\*Check With Dealership On Floorplan Availability*

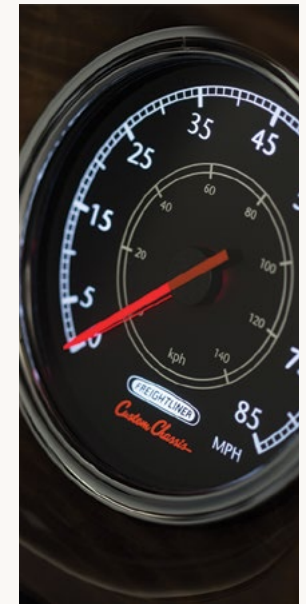
## BAY STAR CHASSIS SPECIFICATIONS

Floor Plan	Engine HP	Axle Ratio	Fuel Cap.	Wheel Base	Front GAWR*	Rear GAWR*	Tag GAWR*	GVWR*	GCWR*	App. UVW	App. NCC
3402	362	5.38	80 gal.	220	8,000 lb.	15,000 lb.	0	22,000 lb.	26,000 lb.	19,130 lb.	2,870 lb.
3401	362	5.38	80 gal.	216	8,000 lb.	15,000 lb.	0	22,000 lb.	26,000 lb.	19,082 lb.	2,918 lb.
3308	362	5.38	80 gal.	216	8,000 lb.	15,000 lb.	0	22,000 lb.	26,000 lb.	18,870 lb.	3,130 lb.
3215	362	5.38	80 gal.	200	8,000 lb.	15,000 lb.	0	22,000 lb.	26,000 lb.	18,229 lb.	3,771 lb.
3124	362	5.38	80 gal.	200	8,000 lb.	15,000 lb.	0	22,000 lb.	26,000 lb.	18,176 lb.	3,824 lb.
3103	362	5.38	80 gal.	200	8,000 lb.	15,000 lb.	0	22,000 lb.	26,000 lb.	17,479 lb.	4,521 lb.
2903	362	5.38	80 gal.	190	8,000 lb.	15,000 lb.	0	22,000 lb.	26,000 lb.	17,318 lb.	4,682 lb.

## OUR PARTNERS

WHERE THE FINEST NAMES IN QUALITY AND PERFORMANCE ARE ALONG FOR THE RIDE.

To assure that you experience only the best in comfort, control and unsurpassed convenience in our incomparable family of Luxury Coaches, Newmar partners with the most prestigious names in mobile lifestyle, entertainment and technology. These brands are leaders in their fields – and legends in providing customers with new, unsurpassed levels of quality and reliability. Best in class performance from names you can trust. At Newmar, that's our difference. And our promise.







---

## TRUST

THE STRONGEST POSSIBLE FOUNDATION  
FOR A MOTOR COACH.

According to Newmar president Matthew Miller, “Customers say they’re loyal to us because they trust us to stand behind our products – from support, parts and service to paying our warranties. It feels good to own a coach that has all of that behind it.”

How do we sustain this high level of service? At Newmar, there’s a Miller way of doing things. These principles guide us every day. Courtesy. Integrity. And reliability. So when you buy from Newmar, you know that every single person who touches your coach or talks with you has your back. Period.

2015

# BAY STAR SPORT & BAY STAR

## NEWMAR EXPRESS LIMITED WARRANTY

Every Bay Star Sport & Bay Star Gas motor coach is backed by Newmar's one-year limited warranty/unlimited miles. Ask your Newmar dealer for details.

## NEWMAR EXPRESS LIMITED WARRANTY

If any part of your Newmar recreational vehicle superstructure (which is the steel/aluminum structure of the sidewall, roof or frame) fails to perform properly within five years from the date of purchase because of faulty workmanship or material supplied by Newmar, it will be repaired without charge for either parts or labor by Newmar. This structural warranty is available only to the original purchaser and is non-transferable.

Some features in our literature are optional. Colors and finishes are photographic representations. The actual materials may look different. Prices, specifications and floor plans are subject to change at Newmar's discretion, without prior notice or obligation. Please see your dealer for actual samples and specifications.



WHEN YOU KNOW THE DIFFERENCE <sup>SM</sup>