

# Navion

**WINNEBAGO**<sup>®</sup>



## Why Navion?

- Mercedes-Benz<sup>®</sup> Sprinter chassis
- Primera swivel cab seats
- Available cabover bunk
- Radio/Rearview Monitor System
- Energy-efficient LED lighting
- Powered patio awning
- Maximum usability with SmartSpace<sup>™</sup> design
- Flex Bed System (24V)
- MCD blackout roller shades
- Available Infotainment Center with Rand McNally RV GPS





On the Cover: 24J Carmine Full-Body Paint (with Available Cabover Bunk)  
24J Moonstone Champagne

24J Linden with High-Gloss Marbella Cherry/Canvas Cabinetry

## Quality Meets Economy

There is no contest—the Navion® continually overachieves in abundance of style and functionality in a nimble Class C motorhome. Built on the Mercedes-Benz® Sprinter chassis, all four floorplans offer unparalleled fuel economy and towing power. With sleeping configurations ranging from

an available cabover bunk to a queen bed to the twin bed Flex Bed System, you can easily accommodate family or friends. If Winnebago's® legendary SuperStructure® construction, Sprinter performance, and a host of luxurious amenities appeal to you, look no further than the Navion.



**Recognized Quality** The Recreation Vehicle Dealer Association annually rates RV manufacturers and awards the Quality Circle Award to manufacturers that provide exceptional products, service, and support. Winnebago is proud to be the only manufacturer that has received this award every year since its inception.



## Best in Class

See how Winnebago takes motorhome design and function to the next level, and why we've earned the right to be called the Most Recognized Name in Motorhomes.®



Click on this icon throughout the brochure to link to more information on the web.



The available **Infotainment Center with Rand McNally RV GPS** features a touch screen color monitor, CD/DVD player, turn-by-turn voice navigation, rearview monitor, SiriusXM™ satellite radio (subscription not included), and much more.



During the day, enjoy meals at the **U-Shaped Dinette** and kick back with the footrests that flip up. At night, convert the dinette to a bed for a sleeping space for your guests.



The available **Cabover Bunk** with privacy curtains transforms your cab into a convenient second bedroom.



Choose the available powered **Skylight/Roof Vent** with sliding screen and pleated shade for control of your lighting.



Unwind while enjoying the coach stereo system or HDTV from your sofa/sleeper or U-shaped dinette with footrests (24J). Standard LED lighting reduces lighting energy consumption by up to 70 percent—dramatically cutting energy demand during extended dry camping trips. With standard MCD roller shades and a powered skylight/roof vent with a sliding screen and pleated shade, you can create your ideal lighting preferences.



24J Linden with High-Gloss Marbella Cherry/Canvas Cabinetry



24J Available Powered Skylight/Roof Vent



24J HDTV Out



24J HDTV In





24J Galley

It's easy to cook in the versatile galley with amenities like the 2-burner range top with a flip-up glass cover that provides extra preparation space. Plus, with the interior upgrade package, you can have sink covers and a frosted acrylic galley backsplash with accent lighting.



2-Burner Range Top with Glass Cover



Full-Extension Drawer Slides



Refrigerator/Freezer



Enjoy the comforts of the double bed in the 24J that flips up at the head of the bed, creating the perfect place to read, or watch your favorite movie on the available HDTV (24J, 24G, 24V). The 24G features a spacious bedroom slideout with a walk-around queen bed and storage on both sides. Enjoy the 1,000-watt inverter (with dedicated 110-volt outlet connection) for convenient use of power when shoreline power is not available.



24J Bed



24J Bathroom Vanity



24J Shower



24J Bed with Headrests



24J Under-Bed Storage





Dash

You'll never want to stop driving when you're behind the wheel in these comfortable Primera cab seats. But when you do, the cab seats swivel to face the lounge, creating additional seating and increasing your living space. Convenient features such as a touchscreen radio with CD and MP3 input and the Rearview Monitor System make your cab experience enjoyable and safe. Choose the available Infotainment Center with Rand McNally RV GPS including SiriusXM™ satellite radio (subscription not included) for nonstop digital selections and expert trip guidance.



Pleated Windshield Blinds



Cab Seats



Enjoy the outdoors from the shaded comfort of the standard powered patio awning with LED lighting and metal wrap (full-body paint). Listen to your favorite music or podcasts with the exterior speaker system. The exterior service center with color-coded labeling makes for hassle-free hookups, and each model has storage compartments for all of your additional gear.



24J Powered Patio Awning



Automatic Entry Steps



Awning LED Lights



Exterior Service Center



Exterior Speaker



**Fiberglass Roof** The crowned, one-piece fiberglass roof is backed by a 10-year limited parts-and-labor roof skin warranty.

**Rubber Can't Cut It** Rubber roofs used by competitors can streak and degrade over time.

**Interlocking Joints** Specially engineered interlocking joints connect the floor, sidewalls and roof where competitors often rely on simple screws to bear the weight.



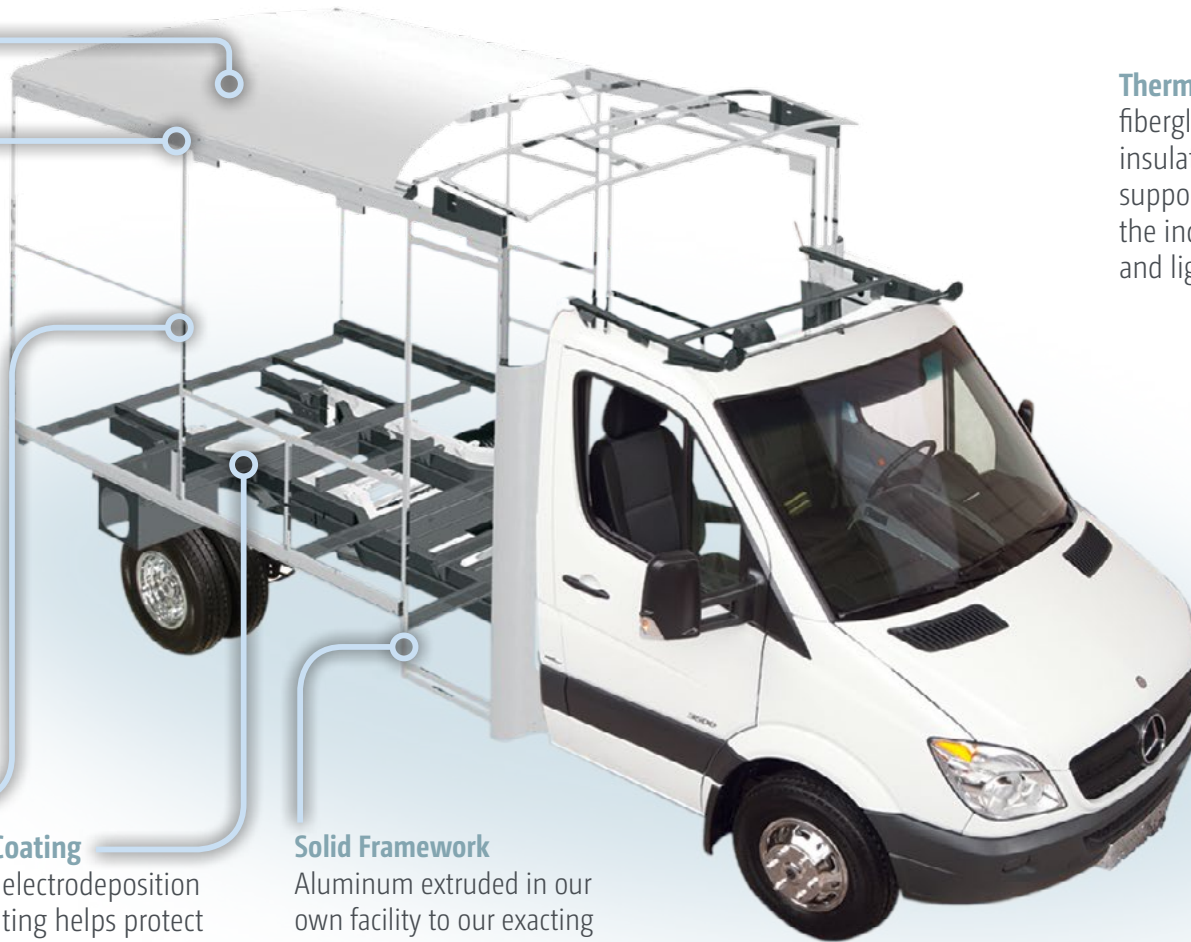
**Embedded Steel** Metal substructures embedded into the sidewall provide solid attachment points to keep cabinets and appliances mounted securely in place.

**E-Coating** An electrodeposition coating helps protect critical steel components.

**Solid Framework** Aluminum extruded in our own facility to our exacting standards creates an extremely strong and solid structural framework.

**Thermo-Panel® Sidewalls** By layering fiberglass and high-density block foam insulation with welded aluminum support structures, we create some of the industry's strongest, most durable and lightweight sidewalls.

**Laser-Cut Tubing** Precision laser cutters create precise joints in structural steel that are stronger and require less welding.



# SUPER STRUCTURE

BUILT TO LAST

Every coach—from our smallest Class C to our largest diesel-pusher model—is built to Winnebago's® legendary SuperStructure® construction standards. It's a process developed and refined over more than 50 years of building some of the strongest, most durable coaches in the industry.



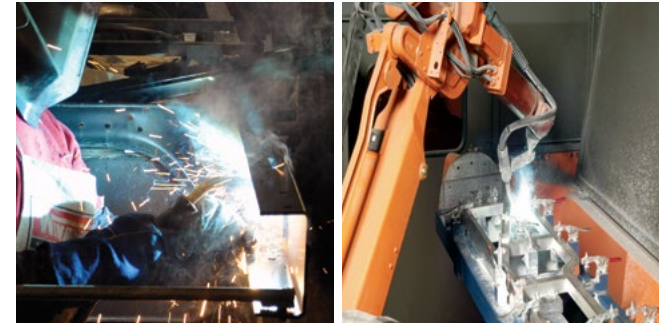
**TESTING** Before rolling out of our factories, every coach undergoes an extensive 113-point inspection. Each coach also passes a high-pressure water test that simulates rain at a rate of 50-inches per hour to check for leaks. During the design process, our computer simulations, physical testing center, and rigorous test track ensure each model is built to last.



**DETAILS** At Winnebago, we treat the features you can't see with the same care as the ones you can. Look in the access panels of some of our competitors' coaches and you'll see loose insulation and wires haphazardly strewn about. Winnebago maintains a clean fit and finish throughout so your coach will last for the long haul.



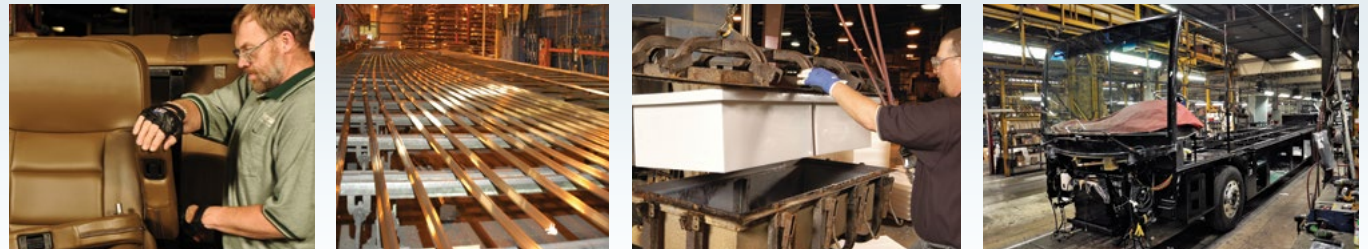
**BUILT IN-HOUSE** We extrude our own aluminum. We rotocast our own plastic components. In fact, we manufacture most of our own parts so they are designed to fit the space, rather than fitting the space to an awkward off-the-shelf component size.



**SUPER STRUCTURE**  
BUILT TO LAST

Visit [BetterBuiltRVs.com](http://BetterBuiltRVs.com) to gain real insight into what goes into a Winnebago motorhome.

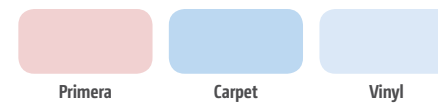
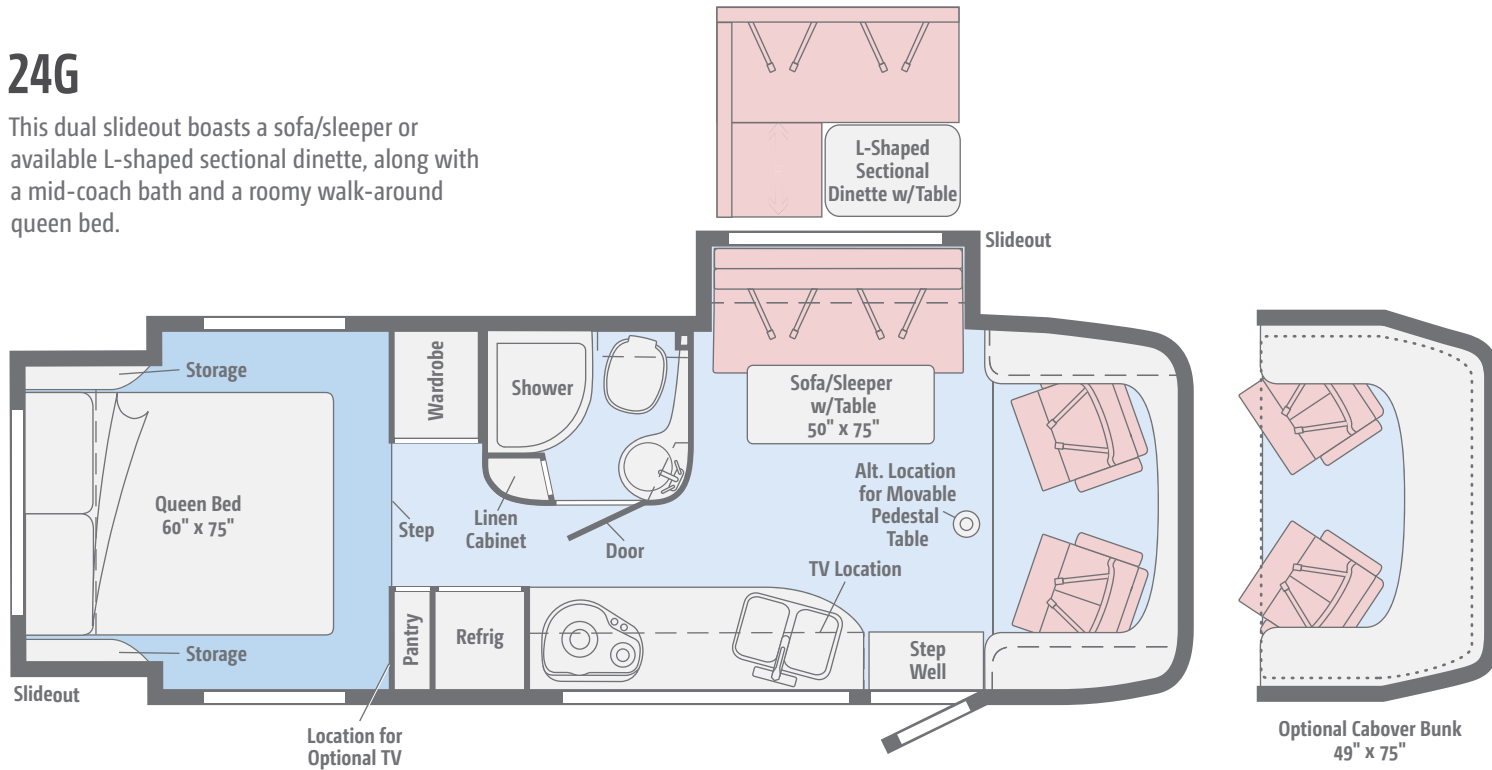
**TAKE A TOUR** We're proud of our processes, state-of-the-art facilities, and the people who make Winnebago number one. We invite you to visit our complex in Forest City, Iowa, for a firsthand look at the dedication and technology behind every motorhome we build.





## 24G

This dual slideout boasts a sofa/sleeper or available L-shaped sectional dinette, along with a mid-coach bath and a roomy walk-around queen bed.

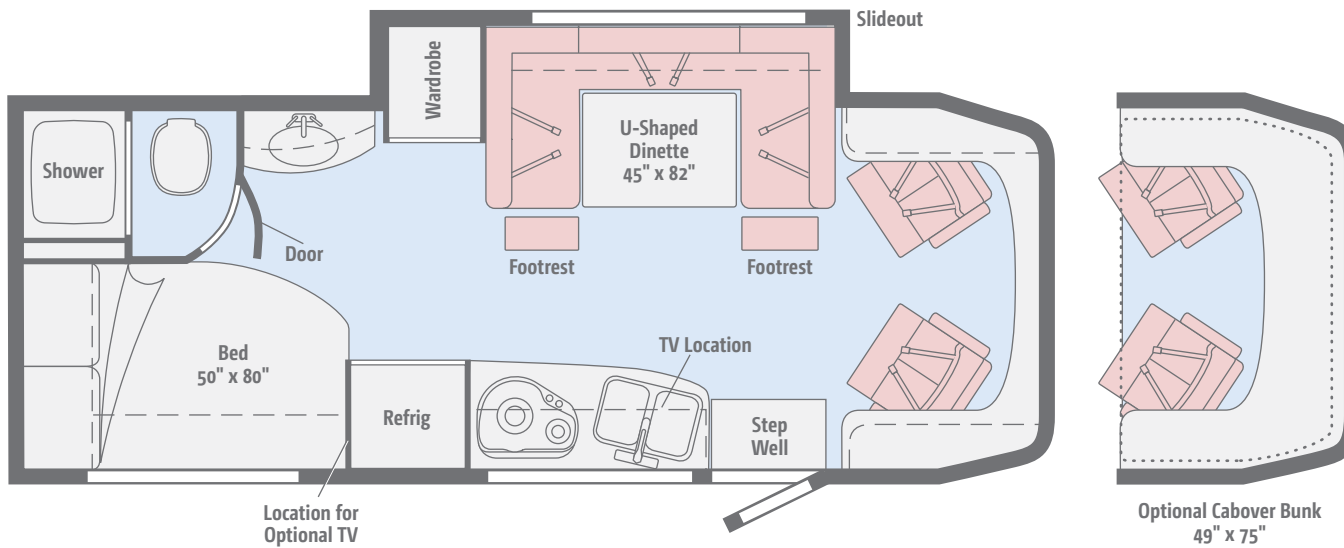


Dimensions shown are for sleeping space only and may vary due to styling differences. Dashed lines denote overhead storage areas. Floorplans and specifications are also available online at [Goltasca.com](http://Goltasca.com).



## 24J

Enjoy the comfort of the U-shaped dinette with footrests during the day, and convert to a bed at night, or retreat to the comfort of the rear corner bed.

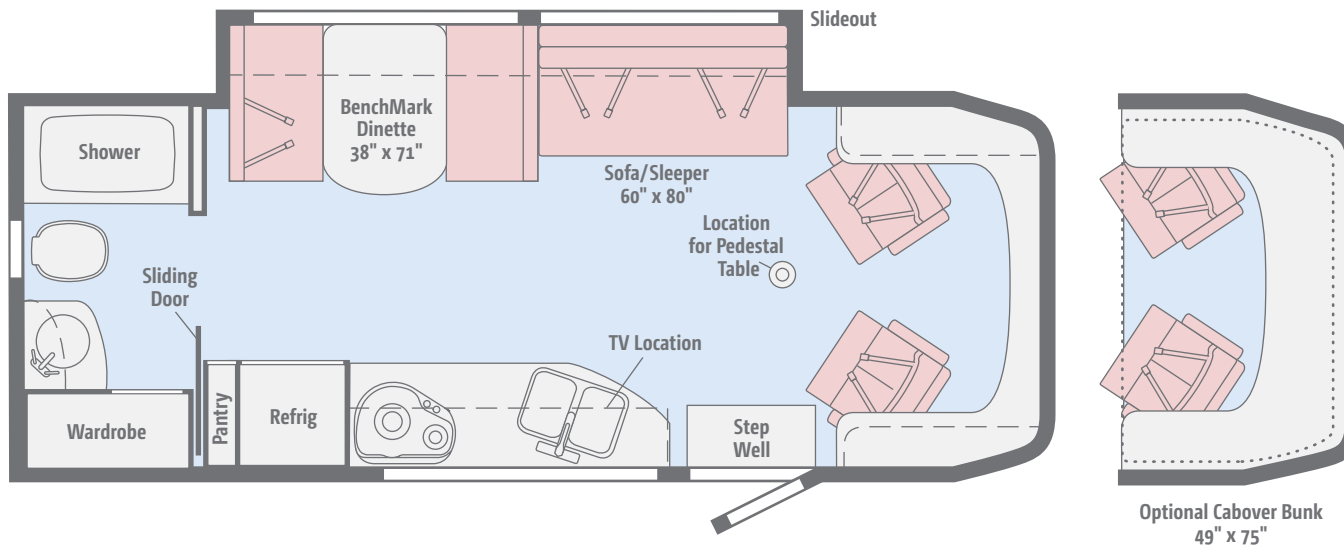


Dimensions shown are for sleeping space only and may vary due to styling differences. Dashed lines denote overhead storage areas. Floorplans and specifications are also available online at [Goltasca.com](http://Goltasca.com).



## 24M

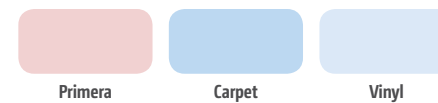
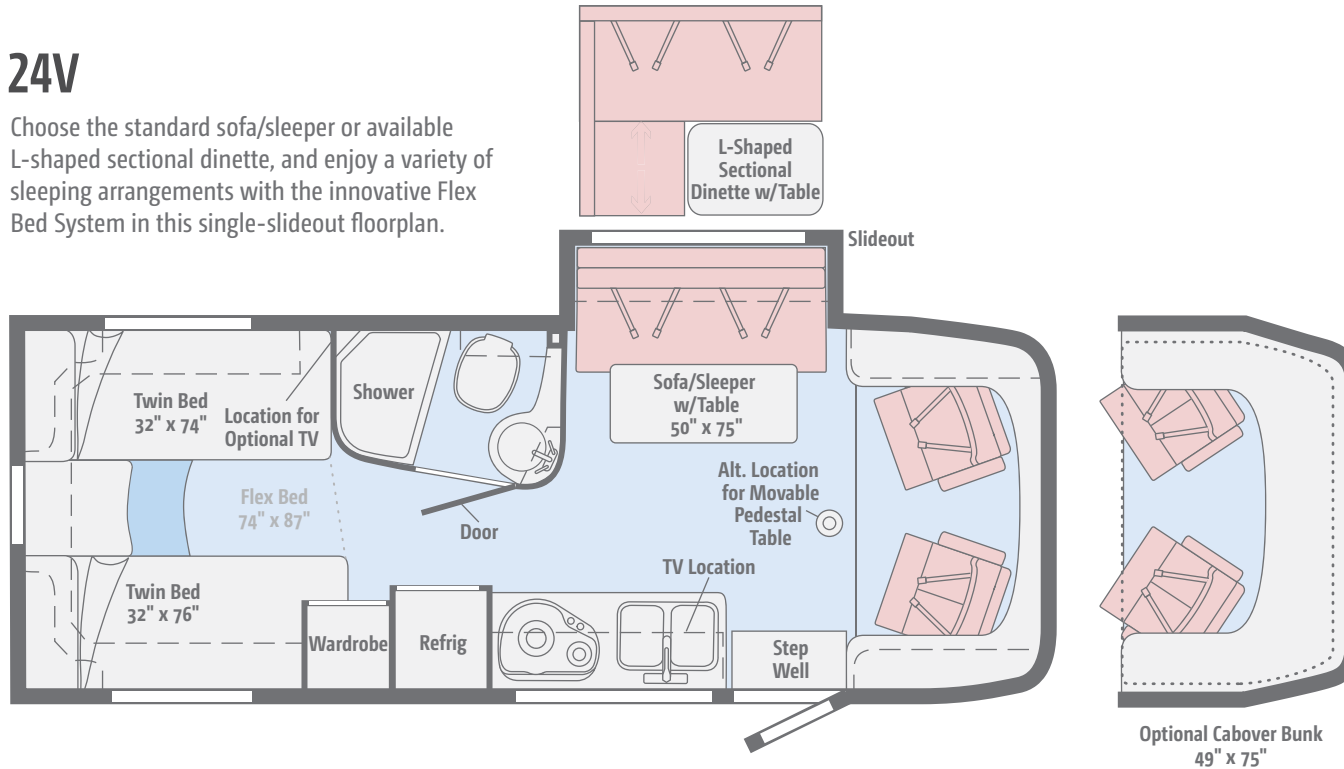
This large-slideout floorplan features a spacious interior with a sofa/sleeper, a BenchMark® full comfort dinette, and a rear bathroom with a wardrobe.



Dimensions shown are for sleeping space only and may vary due to styling differences. Dashed lines denote overhead storage areas. Floorplans and specifications are also available online at [Goltasca.com](http://Goltasca.com).

## 24V

Choose the standard sofa/sleeper or available L-shaped sectional dinette, and enjoy a variety of sleeping arrangements with the innovative Flex Bed System in this single-slideout floorplan.



Dimensions shown are for sleeping space only and may vary due to styling differences. Dashed lines denote overhead storage areas. Floorplans and specifications are also available online at [Goltasca.com](http://Goltasca.com).



Choose from three fabric collections and two wood finishes, each with a canvas insert.

## Shatter



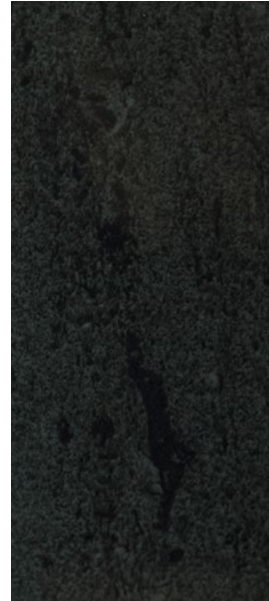
Primera



Accent



Bedspread



Laminate  
Countertop



Wall Board



Carpet



Vinyl



Aosta Cherry/Canvas\*



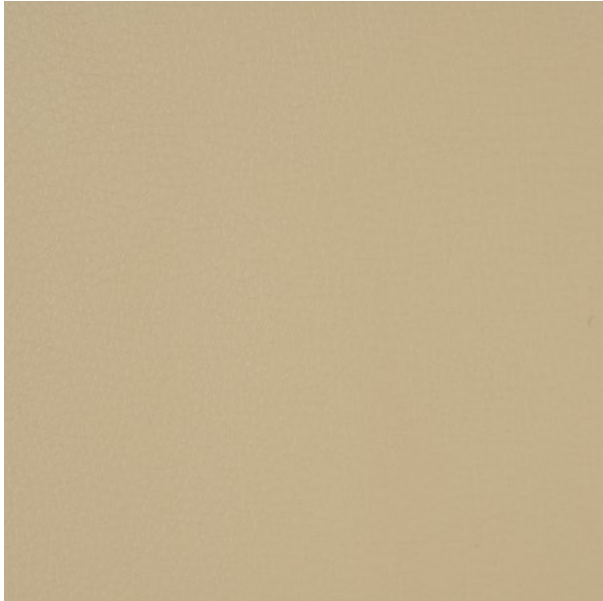
High-Gloss  
Marbella Cherry/Canvas\*

*Winnebago reserves the right to change décor materials and specifications without notice or obligation.*

*\*High-Gloss/Canvas finish in select areas*

Choose from three fabric collections and two wood finishes, each with a canvas insert.

## Linden



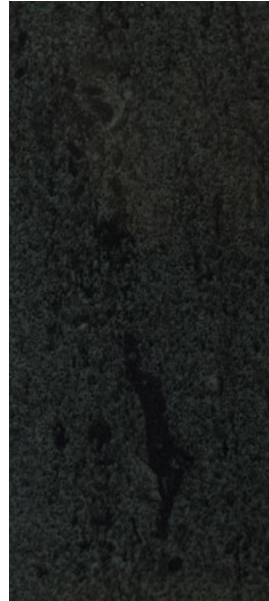
Primera



Accent



Bedsread



Laminate  
Countertop



Wall Board



Carpet



Vinyl



Aosta Cherry/Canvas\*



High-Gloss  
Marbella Cherry/Canvas\*

*Winnebago reserves the right to change décor materials and specifications without notice or obligation.*

*\*High-Gloss/Canvas finish in select areas*



Choose from three fabric collections and two wood finishes, each with a canvas insert.

## Rain



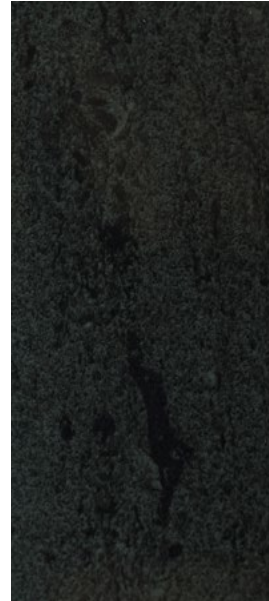
Primera



Accent



Bedsread



Laminate  
Countertop



Wall Board



Carpet



Vinyl



Aosta Cherry/Canvas\*



High-Gloss  
Marbella Cherry/Canvas\*

*Winnebago reserves the right to change décor materials and specifications without notice or obligation.*

*\*High-Gloss/Canvas finish in select areas*

Choose deluxe graphics or available full-body paint. Shown here with available cabover bunk.



**Moonstone**  
DELUXE GRAPHICS



**Moonstone Champagne**  
DELUXE GRAPHICS



**Iron Champagne**  
DELUXE GRAPHICS



Choose deluxe graphics or available full-body paint. Shown here with standard low-profile front cap.



**Moonstone**  
DELUXE GRAPHICS



**Moonstone Champagne**  
DELUXE GRAPHICS



**Iron Champagne**  
DELUXE GRAPHICS

Choose deluxe graphics or available full-body paint. Shown here with available cabover bunk.



**Arctic Silver**  
FULL-BODY PAINT



**Carmine**  
FULL-BODY PAINT



Choose deluxe graphics or available full-body paint. Shown here with available cabover bunk.



**Charcoal**  
FULL-BODY PAINT



**Magnesium**  
FULL-BODY PAINT

## Weights & Measures

	24G	24J	24M	24V
Length	25'8"	25'8"	25'8"	25'8"
Exterior Height <sup>1</sup>	11'1"	11'1"	11'1"	11'1"
Exterior Width	7'6"	7'6"	7'6"	7'6"
Exterior Storage <sup>2</sup> (cu. ft.)	43	48	39.7	43
Awning Length	16'	16'	16'	16'
Interior Height	6'8"	6'8"	6'8"	6'8"
Interior Width	7'3"	7'3"	7'3"	7'3"
Freshwater Tank Capacity <sup>3</sup> (gal.)	31	33	32	31
Water Heater Capacity (gal.)	6	6	6	6
Holding Tank Capacity - Black/Gray <sup>3</sup> (gal.)	36/36	34/40	32/36	36/36
LP Capacity <sup>4</sup> (gal.)	13	13	13	13
Fuel Capacity (gal.)	26.4	26.4	26.4	26.4
GCWR <sup>5</sup> (lbs.)	15,250	15,250	15,250	15,250
GVWR (lbs.)	11,030	11,030	11,030	11,030
GAWR - Front (lbs.)	4,410	4,410	4,410	4,410
GAWR - Rear (lbs.)	7,720	7,720	7,720	7,720
Wheelbase	170"	170"	170"	170"

## Mercedes-Benz® Sprinter Chassis

3.0L 6-cylinder, 188-hp, turbo-diesel engine, 5-speed automatic tip-shift transmission, 220-amp. alternator

Adaptive ESP® technology

4-wheel ABS

Trailer Hitch<sup>9</sup> 5,000-lb. drawbar/500-lb. maximum vertical tongue weight w/7-pin connector

Stainless steel wheel liners

### OPTIONAL EQUIPMENT

Stylized chrome wheels

2.1L 4-cylinder, 161-hp, turbo-diesel engine, 7-speed automatic tip-shift transmission, 220-amp. alternator

## Cab Conveniences

**Radio/Rearview Monitor System** 6" touch screen color monitor, handheld remote, iPod®/MP3 input, color rear camera

**Cab seats** armrest, adjustable lumbar support, headrest, recline, swivel and slide

**Airbags** driver and passenger

**3-point seat belts**

**Power door locks w/remote**

**Power windows**

**Power mirrors w/defrost and turn signals**

**Cruise control**

**Chassis/house battery radio power switch**

**Power steering w/tilt wheel**

**Sunvisors**

**12-volt powerpoints**

**Pleated windshield blinds**

**Privacy curtain** (cab windows)

**Dash appliqué package**

### OPTIONAL EQUIPMENT

**Infotainment Center with Rand McNally RV GPS** 6" touch screen color monitor w/split screen function, Rand McNally RV GPS safe & easy routing, amenities & tools, trips & content, turn-by-turn voice guidance, AM/FM radio w/CD/DVD player, handheld remote, SiriusXM™ (subscription not included), compass, outside temperature, iPod/iPhone® audio integration, Bluetooth™, color rearview camera

**2 cab seat lounge cushions**

## Interior

**Stereo System** AM/FM, alarm clock, CD/DVD player, input jack, Bluetooth™, 2 speakers and subwoofer

**28" HDTV**

**LED lights**

**Satellite system ready**

**Monitor panel**

**Amplified digital HDTV antenna**

**Skylight w/shade**

**Roof vent w/electric lift and ventilator fan** (NA w/available powered skylight)

**Powered roof vent** (bath)

**Mini blinds** (galley)

**MCD blackout roller shades** (bedroom)

**MCD solar/blackout shades** (dining/lounge area)

**Tinted coach windows**

**Soft vinyl ceiling**

**Interior Upgrade Package** frosted galley backsplash w/accent lighting, 2 sink covers

### OPTIONAL EQUIPMENT

**Powered skylight/roof vent w/sliding screen and pleated shade**

## Galley

**Laminate countertops**

**Microwave/convection oven**

**2-burner range top w/glass cover**

**Norcold® two-door refrigerator/freezer**

**Cold water filtration system**

## Bath

**Shower curtain** (24G)

**Retractable, self-cleaning shower screen** (24J, 24M, 24V)

**Flexible showerhead**

**Skylight**

**Water-pump switch**

**Porcelain toilet**

## Bedroom

**Memory foam mattress w/cover** (24G)

**Headboard, foam mattress, underbed storage, mattress cover** (24J)

**Flex Bed System** twin beds/queen bed w/foam mattresses, and access to storage below (24V)

### OPTIONAL EQUIPMENT

**22" HDTV** (24J, 24G, 24V)

## Exterior

**Automatic entrance door step(s)**

**Ladder** (NA 24G)

**LED porch light**

**Step well light**

**Front and rear mud flaps**

**Premium high-gloss skin**

**Powered patio awning w/LED lights** (full-body paint option includes metal wrap)

**Storage compartments**

**Exterior speakers**



## Heating & Cooling System

15,000 BTU air conditioner

20,000 BTU furnace

### OPTIONAL EQUIPMENT

15,000 BTU air conditioner w/heat pump

## Electrical System

**Service Center** light, cable TV input, 30-amp. power cord, portable satellite dish hookup, QuickPort® service connection hatch

**Auxiliary start circuit**

**Exterior AC duplex**

**Exterior antenna jack**

**Battery disconnect system** (coach)

**Automatic dual-battery charge control**

**AC/DC load center, 45-amp. converter/charger**

**2 deep-cycle, Group 24 RV batteries**

**3,600-watt Cummins Onan® MicroQuiet™ LP generator**

**1,000-watt DC/AC inverter**

### OPTIONAL EQUIPMENT

3,200-watt Cummins Onan® diesel generator

## Plumbing System

**Service Center** color-coded labels, city water hookup/tank diverter fill, drainage valves, exterior wash station w/lighted pump switch

**10' sewer hose**

**TrueLevel™ holding tank monitoring system**

**6-gallon 110-volt/LP water heater w/Energy Management System**

**Permanent-mount LP Tank w/remote fill w/power switches**

**Winterization Package** water heater bypass valve and siphon tube

**On-demand water pump**

**Lockable water tank fill**

### OPTIONAL EQUIPMENT

Heated drainage system

## Safety

**LP, smoke, and carbon monoxide detectors**

**10 BC fire extinguisher**

**Ground fault interrupter**

**Child seat tether anchor** (24J, 24M)

**High-mount brake lamps**

**Daytime running lamps**

## Warranty<sup>6</sup>

**12-month/15,000-mile basic limited warranty<sup>7</sup>**

**36-month/36,000-mile limited warranty on structure<sup>7</sup>**

**10-year limited parts-and-labor warranty on roof skin<sup>7</sup>**

- <sup>1</sup> The height of each model is measured to the top of the tallest standard feature and is based on the curb weight of a typically equipped unit. The actual height of your vehicle may vary by several inches depending on chassis or equipment variations. Please check with your dealer for further information.
- <sup>2</sup> The load capacity of your motorhome is designated by weight, not by volume, so you cannot necessarily use all available space when loading your motorhome.
- <sup>3</sup> Capacities are based on measurements prior to tank installation. Slight capacity variations can result due to installation applications.
- <sup>4</sup> Capacities shown are tank manufacturer's listed water capacity (W.C.). Actual filled LP capacity is 80% of listing due to overfilling prevention device on tank.
- <sup>5</sup> Actual towing capacity is dependent on your particular loading and towing circumstances which includes the GVWR, GAWR, and GCWR as well as adequate trailer brakes. Please refer to the Operator's Manual of your vehicle for further towing information.
- <sup>6</sup> See separate chassis warranty.
- <sup>7</sup> See your dealer for complete warranty information.

NA Not Available

Not all items available in combination. See dealer for details.

Winnebago's\* continuing program of product improvement makes specifications, equipment, model availability, and prices subject to change without notice. Published content reflects the most current product information at time of printing. Please consult your dealer for individual vehicle features and specifications.



Let us host your next

# Adventure

Over 20 Tours in 2015



WGOAdventures.com



Show your Winnebago love with high-quality gifts and wearables.



Apparel | Gifts | Parts | Gear

WinnebagoOutdoor.com

Find your style



Connect with Winnebago (Click one of the following)



Like us



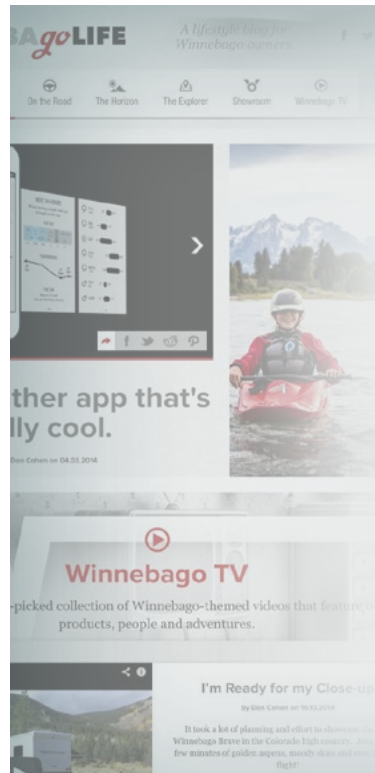
Follow us



Watch now

## WinnebagoInd.com Has All The Answers

Visit WinnebagoInd.com on your computer, smartphone or tablet for the latest product information and updates.



## Welcome to GoLife!

Visit our lifestyle blog for motorhome news, personal travelogues, and community stories.

WinnebagoLife.com





LOOKING BACK  
TELL YOUR STORY  
JOIN THE CREW

WINNEBAGO HAS A STORY  
AND WHAT A STORY IT IS!

## Looking Back



**Take a Drive Down Memory Lane**  
Our historic history began in the American heartland of Forest City, Iowa over 100 years ago. From high quality engineering and building to the finest materials, we've been making recreation vehicles, keeping our story between the wheels.

1 of 11

## Tell us your story

The story of Winnebago is about the people who love our products and take their wild adventures on the road. Now we want to hear from you - other active travelers. Do tell. We promise we'll respond to every submission and receive a Crew spirit award. Added bonus: If your story is posted to the website, we'll send you a vintage-style Crew T-shirt. Read more about The Crew below.

WRITE YOUR STORY READ ALL A TORICA

## Join the Crew

Show Your Pride

We're looking for a few good men and women who love their Winnebago and want to wear it every day to join The Crew. If you love Winnebago products and are interested to show your pride, submit your name and photos to become part of The Crew.



## See How Far We've Come

MOVE THE SLIDER TO SEE THE EVOLUTION



## Then & Now

The Snow is Back

It's the old Winnebago that's here, but it's not the same. It's the new Winnebago that's here, and it's the new Winnebago that's here. It's the new Winnebago that's here, and it's the new Winnebago that's here. It's the new Winnebago that's here, and it's the new Winnebago that's here.

SEE Tribute SEE Brave

## Ads from the Archives

SEE AN AD TO SEE THE ORIGINAL DESIGN



**VISIT:**  
**MyWinnebagoStory.com**

# PREFERRED CARE PROGRAM



We back our motorhomes with best-in-class support both before and after the sale:

- 12-month/15,000-mile basic limited warranty
- 36-month/36,000-mile limited warranty on structure
- 10-year limited parts-and-labor warranty on roof skin
- Complimentary 24-hour roadside assistance program




**TRIPSAVER**  
FAST TRACK PARTS  
**WINNEBAGO**

- TripSaver® Fast Track Parts guarantees that in-stock warranty parts ship directly to your dealer within 24 hours
- National dealer service network


**24/7 WINNEBAGO**  
ROADSIDE ASSISTANCE

For more information, visit us at [WGOService.com](http://WGOService.com)



# WINNEBAGO

## RV INSURANCE



From RV to personal insurance, Winnebago RV Insurance can provide all the coverage and services you need to feel at home on the road.

**Call us at: (800) 642-4892**



# WIT CLUB

## Join the Club, Join the Fun

Here's the perfect way to begin your life on the road as the owner of a new Winnebago – by joining the exclusive WIT Club. Start your adventure with other fun-loving WIT Club members from across the country and get the most out of your new Winnebago motorhome.



**Members enjoy:**

- Caravans and rallies
- Newsletters
- Local and state group activities
- RV travel benefits

See more at [WITclub.com](http://WITclub.com)

©2015 Winnebago  
Seat belts are your most important hookup. Always buckle up.



# Grand National Rally



G'day mates! Explore the outback at this year's "Down Under" Grand National Rally. Each year, thousands of Winnebago owners descend upon the land down under – a.k.a. Forest City, Iowa.

Rally-goers enjoy an unforgettable week reconnecting with friends, taking tours, participating in activities, and more. Hop on down and join the adventure this July!