

# Minnie Winnie and Minnie Winnie Premier

**WINNEBAGO**<sup>TM</sup>



Minnie Winnie Premier

Minnie Winnie

## Why Minnie Winnie | Minnie Winnie Premier?

- Five family-friendly floorplans
- Bunk beds (31H)
- Available HDTVs
- Vinyl ceiling
- MCD solar/blackout roller shades (with Premier Package Upgrade)
- Large rear storage compartment
- Premier Package Upgrade



On the Cover: 31K Tuscan Gold Standard Graphics  
31KP Bronze Mist Deluxe Graphics

31KP Inglewood with Coffee-Glazed Honey Cherry Cabinetry

## A Classic Redefined

The popular Minnie Winnie® offers exciting features and more value than ever before. Traveling families will appreciate having sleeping flexibility including a private bedroom and cab overhead bed. A roomy living area with an available HDTV and DVD player provides a great place to relax after a day of fun and entertainment. Your storage needs are covered with a

large rear trunk storage compartment so you can bring along all your favorite gear. If you are looking for more amenities and eye-catching exterior graphics, choose the Minnie Winnie® Premier. Enjoy legendary Winnebago® quality and performance at an extremely friendly price in the classic Minnie Winnie and Minnie Winnie Premier.



**Recognized Quality** The Recreation Vehicle Dealer Association annually rates RV manufacturers and awards the Quality Circle Award to manufacturers that provide exceptional products, service, and support. Winnebago is proud to be the only manufacturer that has received this award every year since its inception.

## Best in Class

See how Winnebago takes motorhome design and function to the next level, and why we've earned the right to be called the Most Recognized Name in Motorhomes.®



Click on this icon throughout the brochure to link to more information on the web.



31KP U-Shaped Dinette



31KP U-Shaped Dinette as Bed

The **U-Shaped Dinette** (22R, 31K/31KP) easily converts from a dining area into a comfortable bed for overnight guests (telescoping table leg 31KP only).



WinnebagoInd.com



The 31KP **Overhead Bunk** with privacy curtains provides a convenient extra sleeping space for family or friends.



Listen to AM/FM radio or connect your iPod®/MP3 player to the 6" color touch screen with the **Radio/Rearview Monitor System**.



Enjoy your favorite shows on the available **HDTV**.



**Full-Extension Drawer Slides** with roller bearing guides open wide for easy access to all your stored items.



Make your choice from five unique floorplans and experience comfortable dining and lounging in this quality motorhome. Enjoy the available HDTV with DVD player on the cozy leatherette furniture underneath an attractive vinyl ceiling. Upgrade to the Minnie Winnie Premier Package with its Dream Dinette™ table (27QP), Corian® galley countertops, undermount sink with sink cover, and the MCD solar/blackout roller shades that let you create the ideal atmosphere in your coach, day or night.



Wherever your travels take you, enjoy hearty meals made in the user-friendly galley featuring a microwave oven, three-burner range top, and vented range hood. The Minnie Winnie Premier Package offers an upgrade to Corian countertops, a sink cover, a large double-door refrigerator with raised panel door inserts, and an optional three-burner range with oven.





31KP Bedroom



31KP Wardrobe

The walk-around queen bed (corner double bed in the 22R and 25B) and wardrobe make for a welcome escape on an extended vacation. The 31H makes traveling with kids even more enjoyable with bunk beds, a wardrobe, and a large chest of drawers.



31KP Shower



31KP Bath





Dash

Be comfortable wherever you go with the fully-adjustable cab seats. The available Radio/Rearview Monitor System includes a touch screen monitor and color rear camera to make your cab experience enjoyable and safe. Choose the Minnie Winnie Premier Package with its brushed aluminum dash appliqué for a more polished look, and enjoy the added benefits of optional power mirrors with defrost and a sideview camera system.



Available Power Mirrors with Defrost



31KP Available Fiberglass Running Board



# Minnie Winnie | Minnie Winnie Premier Exterior

**WINNEBAGO**

The Minnie Winnie continues to impress with its generous cargo capacity, made possible by the large rear trunk. Available upgrades include a 4,000-watt Cummins Onan® MicroQuiet™ generator, a premium high-gloss fiberglass exterior, and a powered patio awning with LED lighting. When you choose the Minnie Winnie Premier Package, you'll also enjoy deluxe exterior graphics.



31KP Available Powered Patio Awning with LED Lighting



Exterior Rear Storage



Available Patio Awning LED Lighting



Available Stainless Steel Wheel Liners

### Fiberglass Roof

The one-piece fiberglass roof is backed by a 10-year limited parts-and-labor roof skin warranty.

### Rubber Can't Cut It

Rubber roofs used by competitors can streak and degrade over time.

### Thermo-Panel® Sidewalls

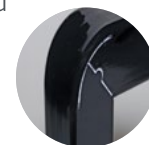
By layering fiberglass and high-density block foam insulation with welded aluminum support structures, we create some of the industry's strongest, most durable, and lightweight sidewalls.

**E-Coating** An electrodeposition coating helps protect critical steel components.

**Embedded Steel** Metal substructures embedded into the sidewall provide solid attachment points to keep cabinets and appliances mounted securely in place.

### Laser-Cut Tubing

Precision laser cutters create precise joints in structural steel that are stronger and require less welding.



**Interlocking Joints** Specially engineered interlocking joints connect the floor, sidewalls, and roof where competitors often rely on simple screws to bear the weight.



**Solid Framework** Aluminum extruded in our own facility to our exacting standards creates an extremely strong and solid structural framework.

# SUPER STRUCTURE®

BUILT TO LAST

Every coach—from our smallest Class C to our largest diesel-pusher model—is built to Winnebago's® legendary SuperStructure® construction standards. It's a process developed and refined over more than 50 years of building some of the strongest, most durable coaches in the industry.

## TESTING

Before rolling out of our factories, every coach undergoes an extensive 113-point inspection. Each coach also passes a high-pressure water test that simulates rain at a rate of 50-inches per hour to check for leaks. During the design process, our computer simulations, physical testing center, and rigorous test track ensure each model is built to last.



## DETAILS

At Winnebago, we treat the features you can't see with the same care as the ones you can. Look in the access panels of some of our competitors' coaches and you'll see loose insulation and wires haphazardly strewn about. Winnebago maintains a clean fit and finish throughout so your coach will last for the long haul.



## BUILT IN-HOUSE

We extrude our own aluminum. We rotocast our own plastic components. In fact, we manufacture most of our own parts so they are designed to fit the space, rather than fitting the space to an awkward off-the-shelf component size.



# SUPER<sup>®</sup> STRUCTURE

BUILT TO LAST



Visit [BetterBuiltRVs.com](http://BetterBuiltRVs.com) to gain real insight into what goes into a Winnebago motorhome.

## TAKE A TOUR

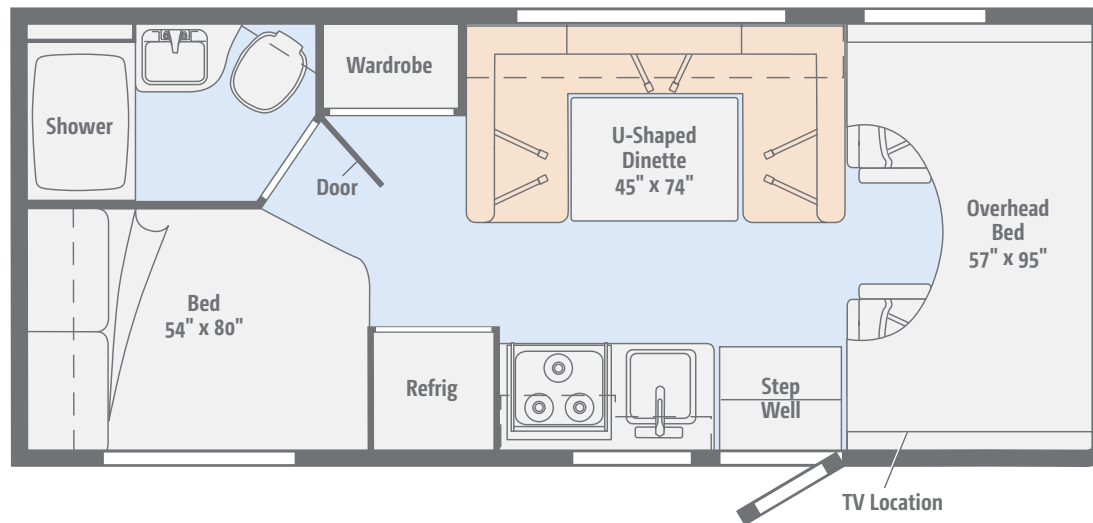
We're proud of our processes, state-of-the-art facilities, and the people who make Winnebago number one. We invite you to visit our complex in Forest City, Iowa, for a firsthand look at the dedication and technology behind every motorhome we build.



[WinnebagoInd.com](http://WinnebagoInd.com)

### 22R

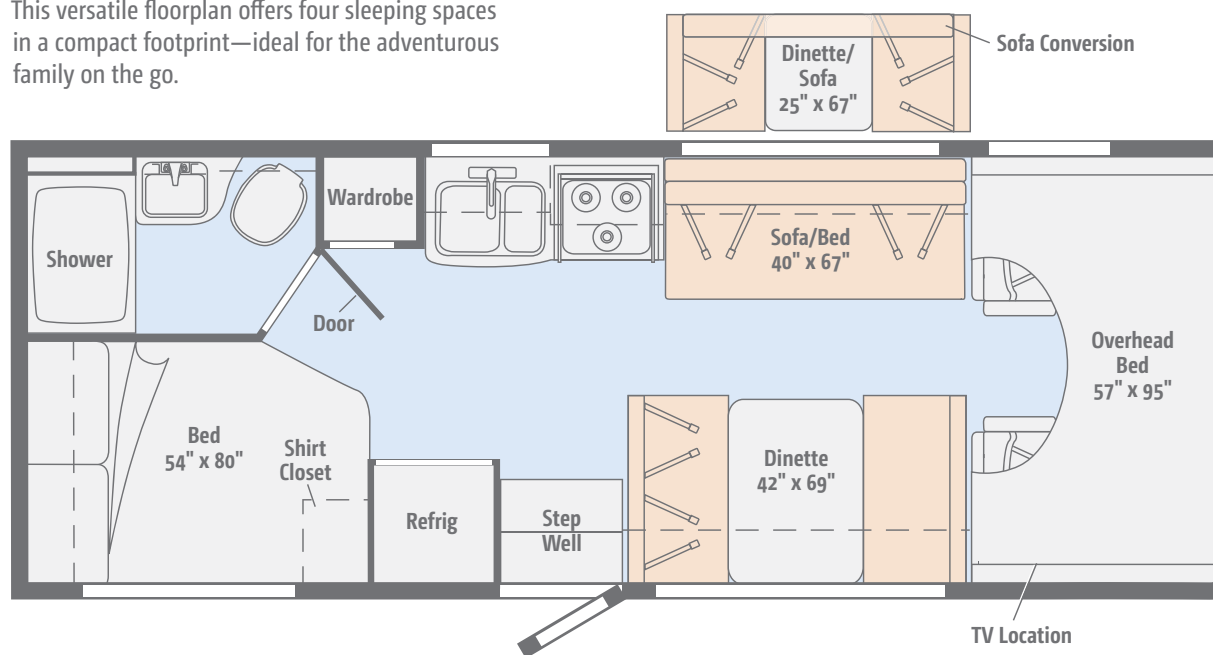
This efficient floorplan features a U-shaped dinette and a cozy, double bed for comfortable sleeping after a long day on the road.



Dimensions shown are for sleeping space only and may vary due to styling differences. Dashed lines denote overhead storage areas. Floorplans and specifications are also available online at [GoWinnebago.com](http://GoWinnebago.com).

### 25B

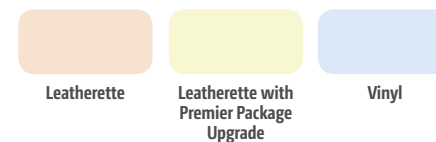
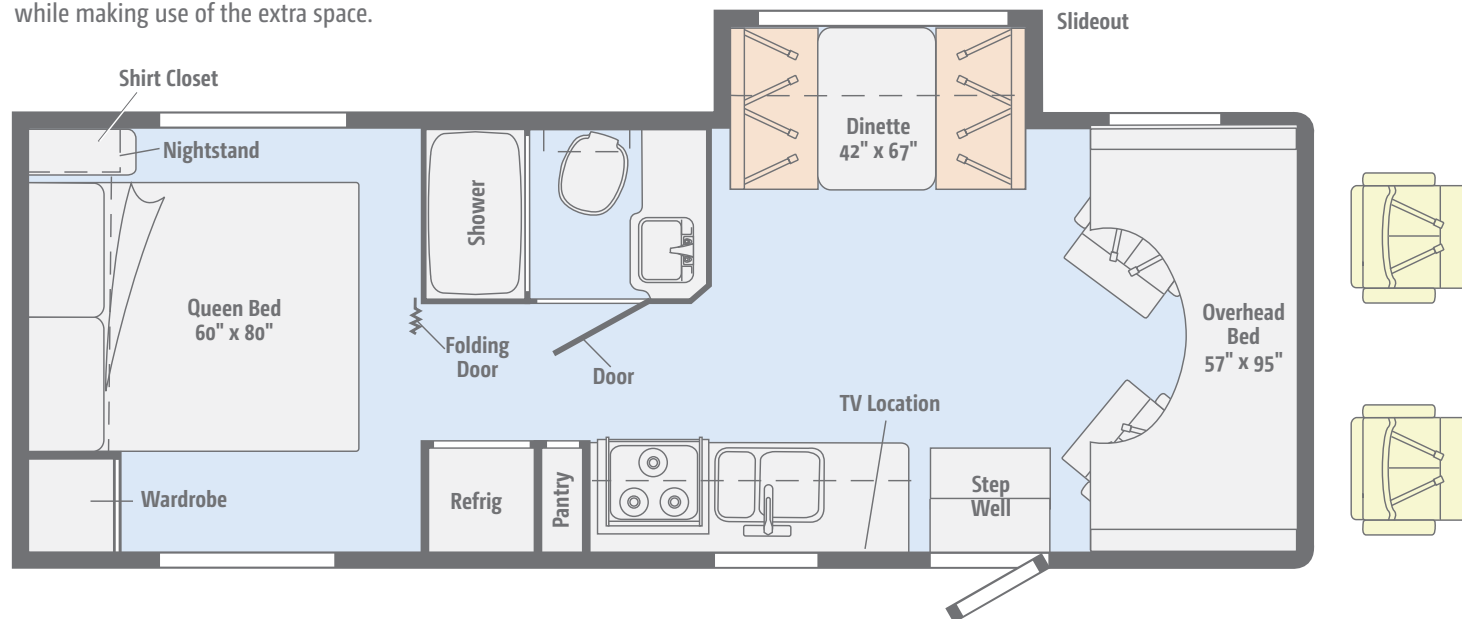
This versatile floorplan offers four sleeping spaces in a compact footprint—ideal for the adventurous family on the go.



Dimensions shown are for sleeping space only and may vary due to styling differences. Dashed lines denote overhead storage areas. Floorplans and specifications are also available online at [GoWinnebago.com](http://GoWinnebago.com).

### 27Q | 27QP

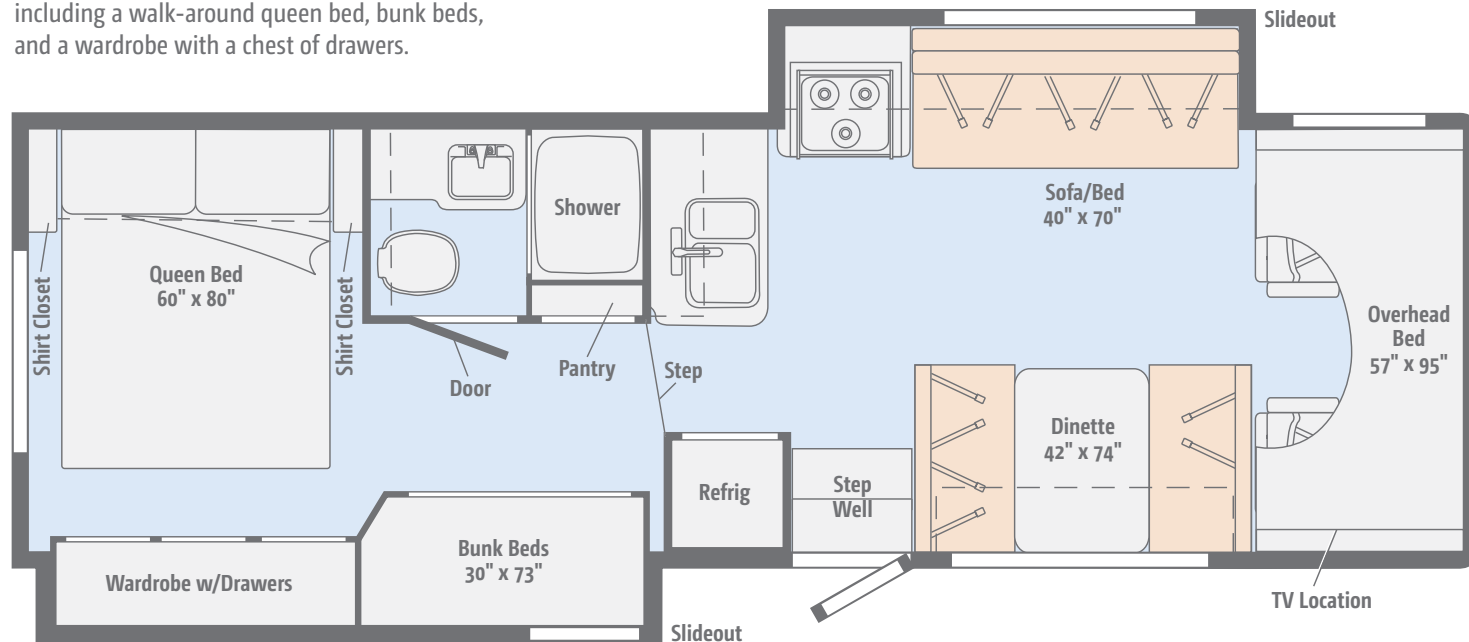
With its walk-around queen bed and slideout dinette, you can comfortably entertain guests while making use of the extra space.



Dimensions shown are for sleeping space only and may vary due to styling differences. Dashed lines denote overhead storage areas. Floorplans and specifications are also available online at [GoWinnebago.com](http://GoWinnebago.com).

### 31H

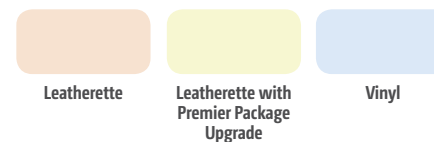
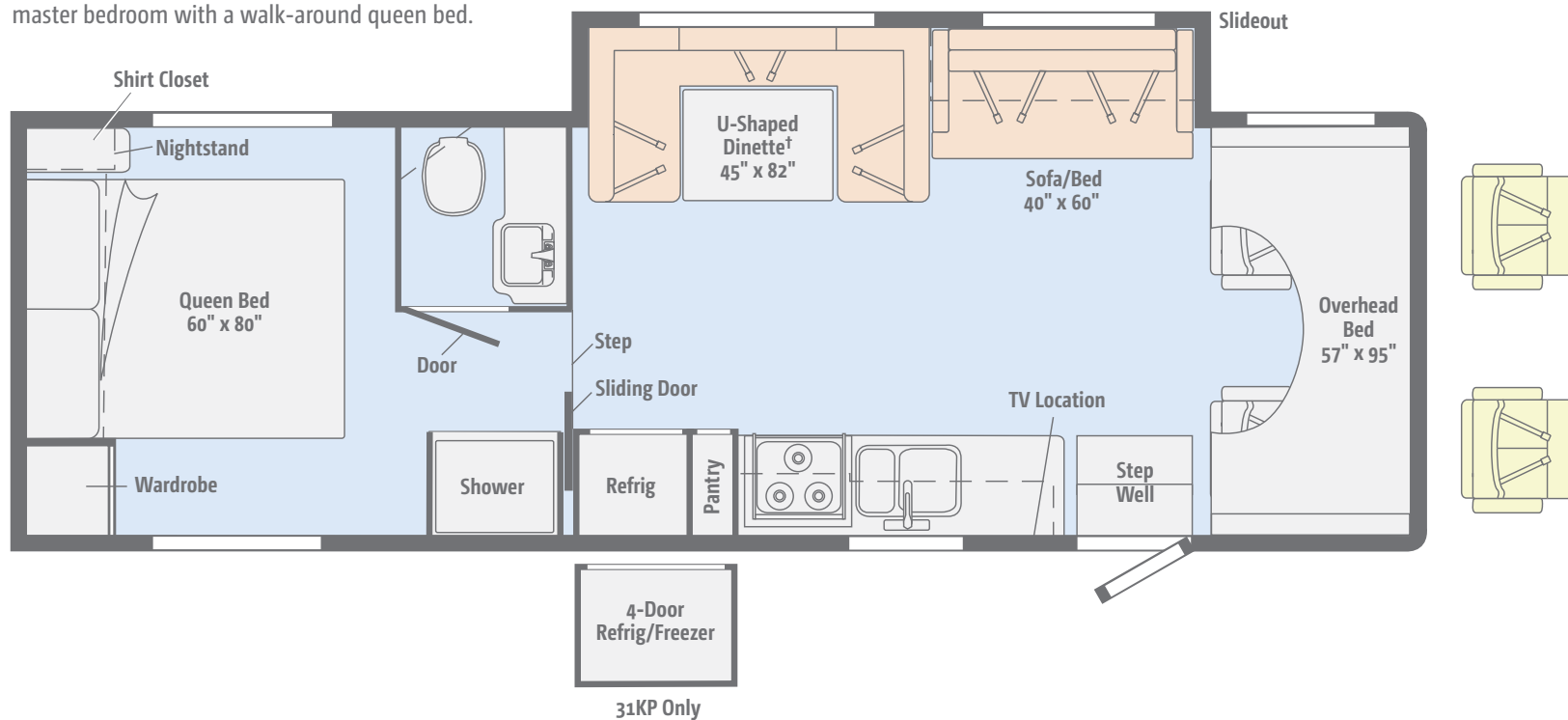
Two slideouts open up a world of possibilities, including a walk-around queen bed, bunk beds, and a wardrobe with a chest of drawers.



Dimensions shown are for sleeping space only and may vary due to styling differences. Dashed lines denote overhead storage areas. Floorplans and specifications are also available online at [GoWinnebago.com](http://GoWinnebago.com).

## 31K | 31KP

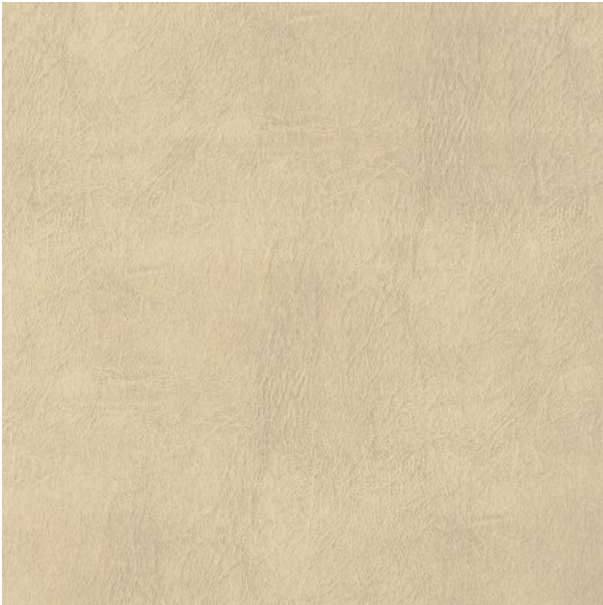
This large slideout features a U-shaped dinette and numerous sleeping arrangements including a private master bedroom with a walk-around queen bed.



Dimensions shown are for sleeping space only and may vary due to styling differences. Dashed lines denote overhead storage areas. Floorplans and specifications are also available online at [GoWinnebago.com](http://GoWinnebago.com).

Choose from four fabric collections. Select Forest Cherry or Coffee-Glazed Vienna Maple cabinetry with the Minnie Winnie. Choose from Coffee-Glazed Vienna Maple or Coffee-Glazed Honey Cherry cabinetry with the Minnie Winnie Premier upgrade.

Coastal



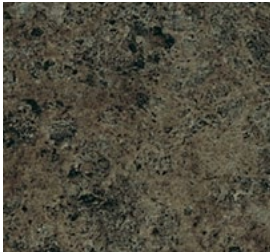
Leatherette



Accent



Bedspread



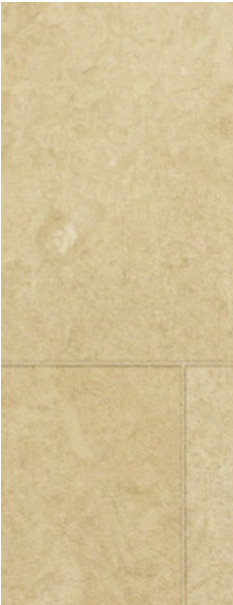
HD Laminate  
Countertop



Corian Countertop  
(Premier Galley)



Wall Board



Vinyl



Forest Cherry  
(Minnie Winnie only)



Coffee-Glazed  
Vienna Maple

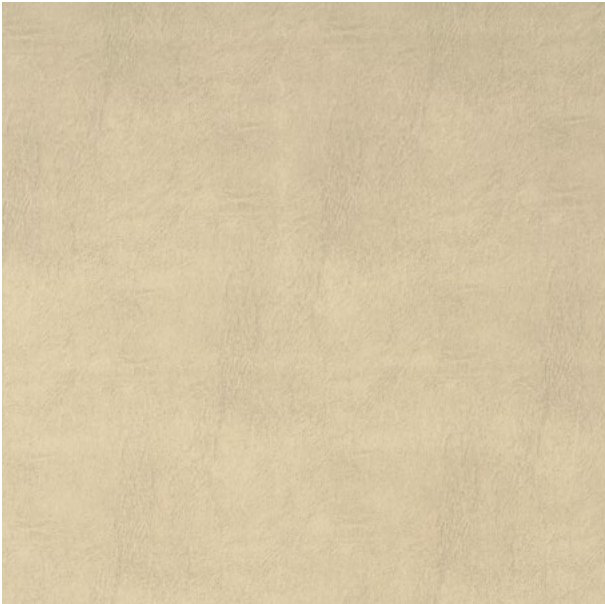


Coffee-Glazed  
Honey Cherry  
(Minnie Winnie Premier only)

Winnebago reserves the right to change décor materials and specifications without notice or obligation.

Choose from four fabric collections. Select Forest Cherry or Coffee-Glazed Vienna Maple cabinetry with the Minnie Winnie. Choose from Coffee-Glazed Vienna Maple or Coffee-Glazed Honey Cherry cabinetry with the Minnie Winnie Premier upgrade.

Cider



Leatherette



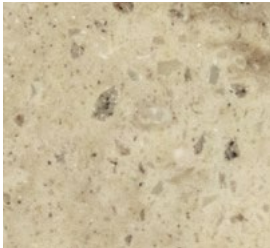
Accent



Bedspread



HD Laminate  
Countertop



Corian Countertop  
(Premier Galley)



Wall Board



Vinyl



Forest Cherry  
(Minnie Winnie only)



Coffee-Glazed  
Vienna Maple



Coffee-Glazed  
Honey Cherry  
(Minnie Winnie Premier only)

Winnebago reserves the right to change décor materials and specifications without notice or obligation.

Choose from four fabric collections. Select Forest Cherry or Coffee-Glazed Vienna Maple cabinetry with the Minnie Winnie. Choose from Coffee-Glazed Vienna Maple or Coffee-Glazed Honey Cherry cabinetry with the Minnie Winnie Premier upgrade.

Sahara



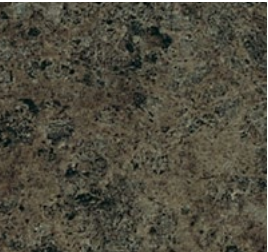
Leatherette



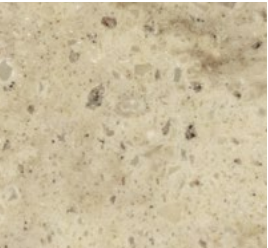
Accent



Bedspread



HD Laminate  
Countertop



Corian Countertop  
(Premier Galley)



Wall Board



Vinyl



Forest Cherry  
(Minnie Winnie only)



Coffee-Glazed  
Vienna Maple



Coffee-Glazed  
Honey Cherry  
(Minnie Winnie Premier only)

Winnebago reserves the right to change décor materials and specifications without notice or obligation.

Choose from four fabric collections. Select Forest Cherry or Coffee-Glazed Vienna Maple cabinetry with the Minnie Winnie. Choose from Coffee-Glazed Vienna Maple or Coffee-Glazed Honey Cherry cabinetry with the Minnie Winnie Premier upgrade.

Inglewood



Leatherette



Accent



Bedspread



HD Laminate  
Countertop



Corian Countertop  
(Premier Galley)



Wall Board



Vinyl



Forest Cherry  
(Minnie Winnie only)



Coffee-Glazed  
Vienna Maple



Coffee-Glazed  
Honey Cherry  
(Minnie Winnie Premier only)

Winnebago reserves the right to change décor materials and specifications without notice or obligation.

# Minnie Winnie | Minnie Winnie Premier

Graphics

**WINNEBAGO**<sup>IND</sup>

The Minnie Winnie comes with a choice of Polar Tuscan Gold or Tuscan Gold standard graphics, or get Bronze Mist deluxe graphics with the Minnie Winnie Premier.



**Polar Tuscan Gold**  
STANDARD GRAPHICS



**Tuscan Gold**  
STANDARD GRAPHICS



**Camel**  
DELUXE GRAPHICS

### Weights & Measures

	22R	25B	27Q   27QP	31H	31K   31KP
Length	23'10"	26'2"	28'6"	32'9"	32'9"
Exterior Height <sup>1</sup>	11'	11'	11'1"	11'1"	11'1"
Exterior Width <sup>2</sup>	8'5.5"	8'5.5"	8'5.5"	8'5.5"	8'5.5"
Exterior Storage <sup>3</sup> (cu. ft.)	61.1	76	83	85.2	101
Awning Length	14'	17'	17'	10'6"	20'
Interior Height	6'10"	6'10"	6'10"	6'10"/6'5.5"	6'10"/6'5.5"
Interior Width	8'	8'	8'	8'	8'
Freshwater Tank Capacity <sup>4</sup> (gal.)	40	40	44	44	44
Water Heater Capacity (gal.)	6	6	6	6	6
Holding Tank Capacity - Black/Gray <sup>4</sup> (gal.)	21/24	23/27	30/35	37/30	30/30
LP Capacity <sup>5</sup> (gal.)	18	18	18	18	18
Fuel Capacity (gal.)	55	55	55	55	55
GCWR <sup>6</sup> (lbs.)	13,000/18,500 <sup>A</sup>	18,500 <sup>A</sup>	22,000 <sup>B</sup>	22,000 <sup>B</sup>	22,000 <sup>B</sup>
GVWR (lbs.)	11,500 <sup>A</sup>	11,500 <sup>A</sup>	14,500 <sup>B</sup>	14,500 <sup>B</sup>	14,500 <sup>B</sup>
GAWR - Front (lbs.)	4,600 <sup>A</sup>	4,600 <sup>A</sup>	5,000 <sup>B</sup>	5,000 <sup>B</sup>	5,000 <sup>B</sup>
GAWR - Rear (lbs.)	7,800 <sup>A</sup>	7,800 <sup>A</sup>	9,600 <sup>B</sup>	9,600 <sup>B</sup>	9,600 <sup>B</sup>
Wheelbase	158"	182"	190"	220"	220"

<sup>\*</sup> Rear of Coach    <sup>A</sup> Ford E350 Chassis    <sup>B</sup> Ford E450 Chassis

### Chassis

**Ford® E350 Chassis** (22R) 255-hp 5.4L Triton® V8 engine, TorqShift™ 5-speed automatic transmission w/overdrive, 120-amp. alternator

**Ford E350 Chassis** (25B) 305-hp 6.8L SEFI Triton V10 engine, TorqShift 5-speed automatic transmission w/overdrive, 120-amp. alternator

**Ford E450 Chassis** (27Q/27QP, 31H, 31K/31KP) 305-hp 6.8L SEFI Triton V10 engine, TorqShift 5-speed automatic transmission w/overdrive, 120-amp. alternator

**4-wheel ABS**

**Wheel covers**

#### OPTIONAL EQUIPMENT

**Ford E350 Chassis** (22R) 305-hp 6.8L SEFI Triton V10 engine, TorqShift 5-speed automatic transmission w/overdrive, 120-amp. alternator

**Stainless steel wheel liners**

**Trailer Hitch**<sup>6</sup> 5,000-lb. drawbar/350-lb. maximum vertical tongue weight (22R, 25B, 27Q, 31H, 31K)



Ford E450 Chassis

### Optional Package Upgrades

**Convenience and Appearance Package** auxiliary rear air springs (NA 22R, 25B), front bunk ladder, glass shower door, powered patio awning, HDTV w/DVD player, rear ladder, Radio/Rearview Monitor System, stainless steel wheel liners and valve extenders, 5,000-lb. hitch w/7 pin connector

**Comfort and Safety Package** 15,000 BTU roof air conditioner, 80" bed, child seat tether, double-door refrigerator, vinyl floor covering throughout coach, 4,000-watt Cummins Onan® gas generator, high-definition laminate countertops, high-gloss fiberglass, in-dash radio/CD player, leatherette, patio awning, reinforced seat belt mounts, residential size toilet, roadside assistance, RVIA seal, sealed cabinet for cooktop, steel appliance tie-downs, steel stepwell

**Minnie Winnie Premier Package** Convenience and Appearance Package, Comfort and Safety Package, auxiliary start circuit, front fiberglass cap, deluxe exterior graphics, glazed cabinetry, Corian® countertop for galley w/undermount stainless steel sink and Corian sink cover, soft vinyl ceiling, fiberglass running boards w/wheel lips, deluxe exterior mirrors upgrade w/chrome heads and sideview cameras, leatherette cab seats, large refrigerator w/raised panel inserts, HDTVs, black tank flush system, bunk privacy curtain, cabinet over U-Dinette (31KP), headboard, Dream Dinette™ table mechanism (27QP), fabric/leatherette trim on U-Dinette (31KP), fold-over bedspread w/pillow fillers, dash appliqué, Jack® digital HDTV antenna, LED ceiling lights, MCD solar/blackout roller shades (lounge, dinette, bedroom), porcelain toilet, rear trunk storage liner, stainless steel lavatory sink (31KP), bath towel bar, 2 deep-cycle, Group 24 batteries, single control faucets, window treatment upgrade, LED awning lights

**Premier Package Options** Dual-glazed, thermo-insulated windows, 3-burner range w/oven, heated drainage system, microwave convection oven, 4-door refrigerator (31KP)

### Cab Conveniences

**Swivel cab seat pedestal** (27Q driver and passenger)

**Cab seats** armrests, lumbar support, and multi-adjustable slide/recline

**3-point seat belts**

**Airbags** driver and passenger

**12-volt powerpoint**

**Power steering w/tilt and cruise control**

**Power door locks**

**Sunvisors**

**Manual mirrors w/breakaway arms**

#### OPTIONAL EQUIPMENT

**Radio/Rearview Monitor System** 6" LCD touch screen color monitor, remote, AM/FM stereo, iPod®/MP3 input, color rear camera

## Interior

**Amplified digital TV antenna system**

**Pleated night shades** (lounge, dinette, and bedroom)

**Mini blinds** (galley)

**Systems monitor panel**

**Roof vent** (bedroom and front bunk area)

**Powered roof vent** (bath)

**Cab privacy curtain**

**Tinted windows**

**Vinyl ceiling**

### OPTIONAL EQUIPMENT

**28" HDTV** w/DVD player and remote (22R, 25B, 31H)

**32" HDTV** w/DVD player and remote (27Q, 31K)

**Tinted, dual-glazed, thermo-insulated windows**

## Galley

**Microwave oven**

**3-burner range top w/storage below**

**Vented range hood**

### OPTIONAL EQUIPMENT

**3-burner range w/oven**

## Bath

**Shower curtain**

**Flexible showerhead**

**Skylight**

## Bedroom

**Bunk Beds** w/covered foam mattresses, mattress covers, storage compartment, and privacy curtains (31H)

**Mattress cover** (22R, 25B)

**Bedspread** (27Q, 31H, 31K)

**Headboard**

### OPTIONAL EQUIPMENT

**Two 22" HDTVs** (31H bunk beds)

## Exterior

**Porch light**

**Running boards**

**Large trunk storage compartment**

## Heating & Cooling System

**20,000 BTU furnace** (22R, 25B)

**30,000 BTU furnace** (27Q/27QP, 31K/31KP, 31H)

## Electrical System

**AC/DC load center, 45-amp. converter/charger**

**30-amp. power cord**

**TV jack and AC receptacle near entrance door**

**Deep-cycle, Group 24 battery**

**Coach battery disconnect system**

**Automatic dual-battery charge control**

## Plumbing System

**City water hookup**

**On-demand water pump**

**6-gallon LP water heater w/electronic ignition**

**Permanent-mount LP tank w/gauge**

### OPTIONAL EQUIPMENT

**Heated electric drainage system**

## Safety

**LP, smoke, and carbon monoxide detectors**

**10 BC fire extinguisher**

**Ground fault interrupter**

**Child seat tether anchor**

## Warranty<sup>7</sup>

**12-month/15,000-mile basic limited warranty<sup>8</sup>**

**36-month/36,000-mile limited warranty on structure<sup>8</sup>**

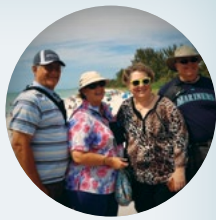
**10-year limited parts-and-labor warranty on roof skin<sup>8</sup>**

### FOOTNOTES

- 1 The height of each model is measured to the top of the tallest standard feature and is based on the curb weight of a typically equipped unit. The actual height of your vehicle may vary by several inches depending on chassis or equipment variations. Please contact your dealer for further information.
- 2 Floorplans feature a wide-body design – over 96". In making your purchase decision, you should be aware that some states restrict access on some or all state roads to 96" in body width. Before making your purchase decision, you should confirm the road usage laws in the states of interest to you.
- 3 The load capacity of your motorhome is designated by weight, not by volume, so you cannot necessarily use all available space when loading your motorhome.
- 4 Capacities are based on measurements prior to tank installation. Slight capacity variations can result due to installation applications.
- 5 Capacities shown are tank manufacturer's listed water capacity (W.C.) Actual filled LP capacity is 80% of listing due to overfilling prevention device on tank.
- 6 Actual towing capacity is dependent upon your particular loading and towing circumstances, which includes the GVWR, GAWR and GCWR as well as adequate trailer brakes. Please refer to the Operator's Manual of your vehicle for further towing information.
- 7 See separate chassis warranty.
- 8 See your dealer for complete warranty information.

Winnebago's continuing program of product improvement makes specifications, equipment, model availability, and prices subject to change without notice. Published content reflects the most current product information at time of printing. Please consult your dealer for individual vehicle features and specifications.





Let us host  
your next

# Adventure

Over 20 Tours  
in 2015



[WGOAdventures.com](http://WGOAdventures.com)

Connect with Winnebago (Click one of the following)



Like us



Follow us



Watch now



Show your Winnebago love  
with high-quality gifts and wearables.



Apparel | Gifts | Parts | Gear

[WinnebagoOutdoor.com](http://WinnebagoOutdoor.com)

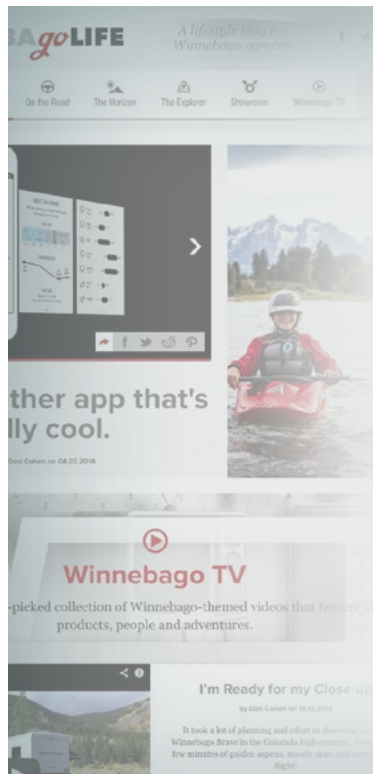
Find your style



**WINNEBAGO**  
OUTDOOR

## WinnebagoInd.com Has All The Answers

Visit [WinnebagoInd.com](http://WinnebagoInd.com) on your computer, smartphone, or tablet for the latest product information and updates.



## Welcome to GoLife!

Visit our lifestyle blog  
for motorhome news,  
personal travelogues,  
and community stories.

[WinnebagoLife.com](http://WinnebagoLife.com)

**goLIFE**

mywinnebago.com

LOOKING BACK  
TELL YOUR STORY  
JOIN THE CREW

WINNEBAGO  
FOREST CITY, IOWA

SEE HOW FAR WE'VE COME  
THINK & SHARE  
JOIN FROM THE ARCHIVES

WINNEBAGO HAS A  
**STORY**  
AND WHAT A STORY IT IS

Looking Back

Tell us your story

Write your STORY

READ ALL stories

Join the Crew

Show Your Pride

See How Far We've Come

Then & Now

Ads from the Archives

**VISIT:**  
MyWinnebagoStory.com

**PREFERRED CARE PROGRAM**

We back our motorhomes with best-in-class support both before and after the sale:

- 12-month/15,000-mile basic limited warranty
- 36-month/36,000-mile limited warranty on structure
- 10-year limited parts-and-labor warranty on roof skin
- Complimentary 24-hour roadside assistance program

**TRIPSAVER**  
FAST TRACK PARTS  
**WINNEBAGO**

TripSaver® Fast Track Parts guarantees that in-stock warranty parts ship directly to your dealer within 24 hours

National dealer service network

For more information, visit us at [WGOService.com](http://WGOService.com)

**WINNEBAGO**  
ROADSIDE ASSISTANCE

**WIT CLUB**

Join the Club, Join the Fun

Here's the perfect way to begin your life on the road as the owner of a new Winnebago – by joining the exclusive WIT Club. Start your adventure with other fun-loving WIT Club members from across the country and get the most out of your new Winnebago motorhome.

Members enjoy:

- Caravans and rallies
- Newsletters
- Local and state group activities
- RV travel benefits

See more at [WITclub.com](http://WITclub.com)

©2015 Winnebago  
Seat belts are your most important hookup. Always buckle up.

**WIT CLUB**  
"DOWN UNDER"

**Grand National Rally**

G'day mates! Explore the outback at this year's "Down Under" Grand National Rally. Each year, thousands of Winnebago owners descend upon the land down under – a.k.a. Forest City, Iowa.

Rally-goers enjoy an unforgettable week reconnecting with friends, taking tours, participating in activities, and more. Hop on down and join the adventure this July!

**WINNEBAGO**  
RV INSURANCE

From RV to personal insurance, Winnebago RV Insurance can provide all the coverage and services you need to feel at home on the road.

Call us at: (800) 642-4892