

SIESTA &
SIESTA SPRINTER

MADE TO FIT
YOUR SPIRIT



**SIESTA &
SIESTA SPRINTER**

 BY THOR MOTOR COACH

WHEN WE SAY *MADE TO FIT*,
WE MEAN IT.

With so many unique models available, Thor Motor Coach motorhomes are priced to fit anyone's budget – from families buying their first motorhome to full-timers looking for a roaming “dream home”. No matter how you choose to spend your time or your money, there's a TMC motorhome that fits your needs. Welcome to the Siesta, the motorhome that is *Made to Fit* your spirit.



24SL | WAVES OCEAN | SYDNEY MAPLE



ALL MODELS FEATURE LED TVS. LOCATIONS VARY.



24SR | TOASTED ALMOND | OLYMPIC CHERRY



29TB | TOASTED ALMOND | OLYMPIC CHERRY

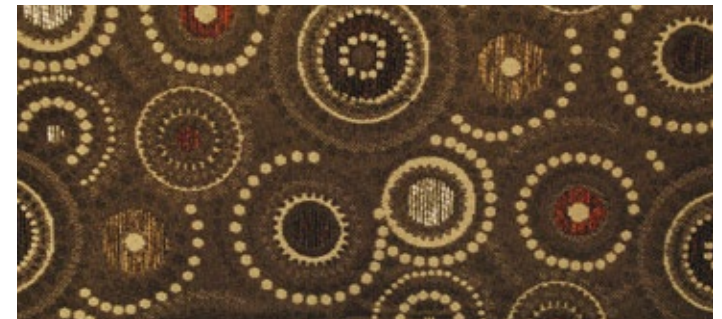






24SL | WAVES OCEAN | SYDNEY MAPLE

BEAUTY INSIDE & OUT



BRONZE COIN



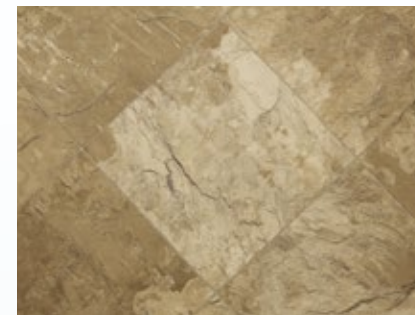
TOASTED ALMOND



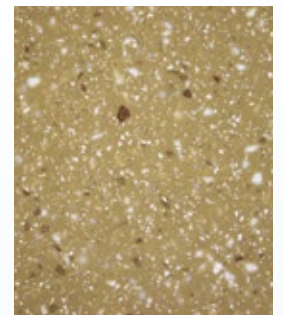
WAVES OCEAN



24SR | TOASTED ALMOND | OLYMPIC CHERRY



FLOORING



COUNTERTOPS

SIESTA



LEATHERETTE
FURNITURE



OLYMPIC CHERRY



SYDNEY MAPLE



COBALT BLUE FULL-BODY PAINT



GOLDEN NUGGET HD-MAX™

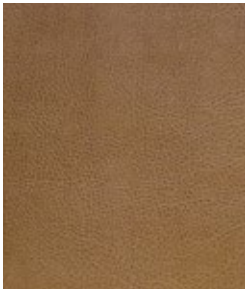


FALL ESCAPEDE FULL-BODY PAINT



RIO RED HD-MAX™

SIESTA SPRINTER



LEATHERETTE
FURNITURE



OLYMPIC CHERRY



SYDNEY MAPLE



COBALT BLUE FULL-BODY PAINT



GOLDEN NUGGET HD-MAX™



FALL ESCAPEDE FULL-BODY PAINT



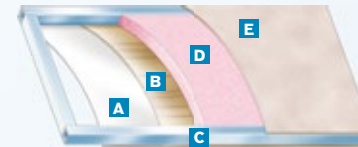
RIO RED HD-MAX™

Taking the extra time to ensure the best possible structure is exactly what you deserve, and this is why Thor Motor Coach insists on vacuum-bond laminating not only the sidewalls of the motorhome, but also the floor and roof. Vacuum-bonding is the optimum manufacturing process to ensure multi-layer integrity.



ROOF

- A** One-piece exterior TPO membrane
- B** Luan panels
- C** Aluminum structure with bowed framing
- D** Block foam insulation
- E** Interior panel with soft touch vinyl covering



SIDEWALLS

- A** High-gloss or gel-coat fiberglass
- B** Luan panels
- C** Aluminum structure with framing at all openings
- D** Block foam insulation
- E** Interior panel with designer wall covering



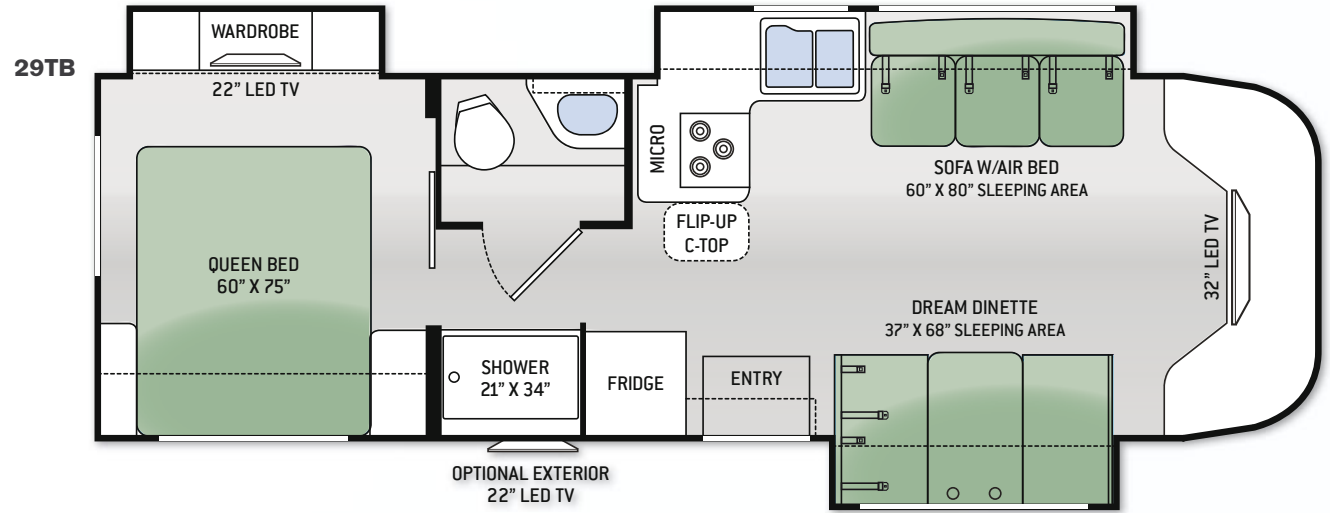
FLOOR

- A** Residential vinyl flooring or carpet
- B** OSB structure wood base
- C** Structural framing
- D** Block foam insulation
- E** Luan with woven plastic exterior finish

FLOOR PLANS

SIESTA 29TB

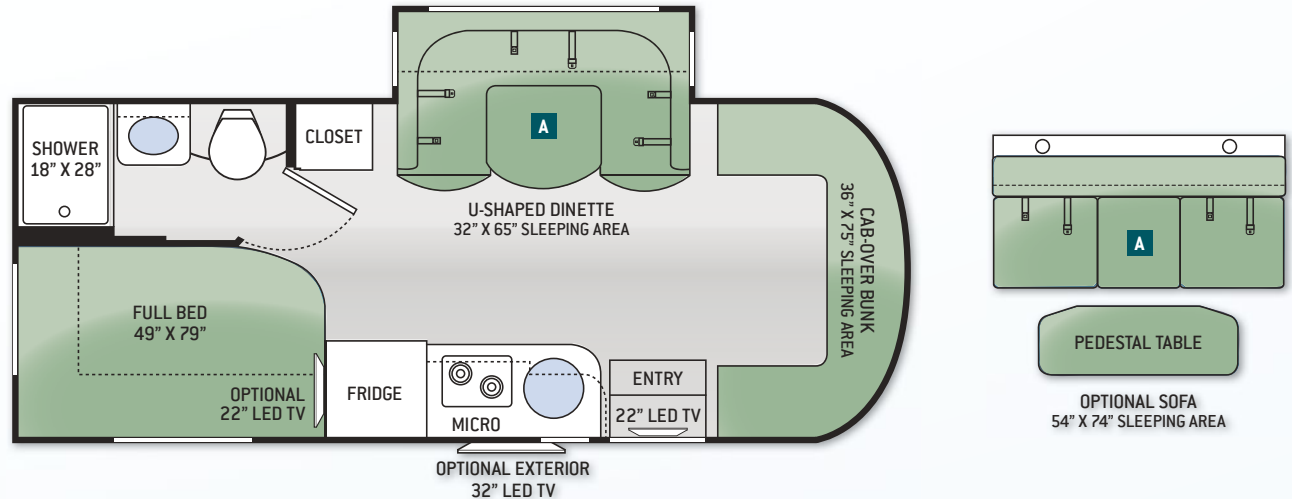
Chassis	Ford
Gross Vehicle (GVWR)	14,500
Gross Combined (GCWR)	22,600
Wheel Base	220"
Exterior Length (w/o ladder)	31'-7"
Exterior Height (w/AC)	10'-10"
Exterior Width (w/o mirrors)	94"
Interior Height	80"
Awning Size	14'
Fuel (gal)	55
LPG (lbs)	40.9
Fresh/Waste/Gray Water (gal)	40 / 25 / 23
Water Heater (gal)	6
Furnace (BTUs)	25,000
Exterior Storage Capacity (cu. ft.)	56.3



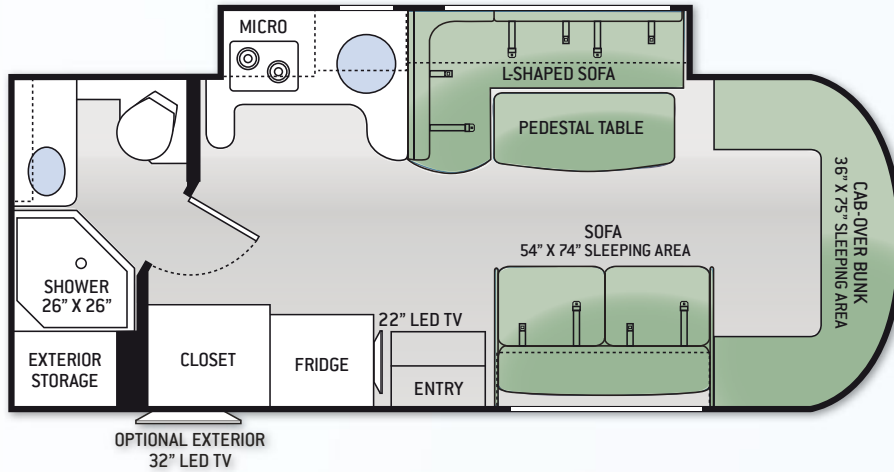
SIESTA SPRINTER 24SA

Chassis	Mercedes-Benz Sprinter
Gross Vehicle (GVWR)	11,030
Gross Combined (GCWR)	15,250
Wheel Base	170.3"
Exterior Length (w/o ladder)	24'-6"
Exterior Height (w/AC)	10'-10"
Exterior Width (w/o mirrors)	90"
Interior Height	80"
Awning Size	14'-6"
Fuel (gal)	26.4
LPG (lbs)	68.2
Fresh/Waste/Gray Water (gal)	40 / 38 / 38
Water Heater (gal)	6
Furnace (BTUs)	25,000
Exterior Storage Capacity (cu. ft.)	49.6

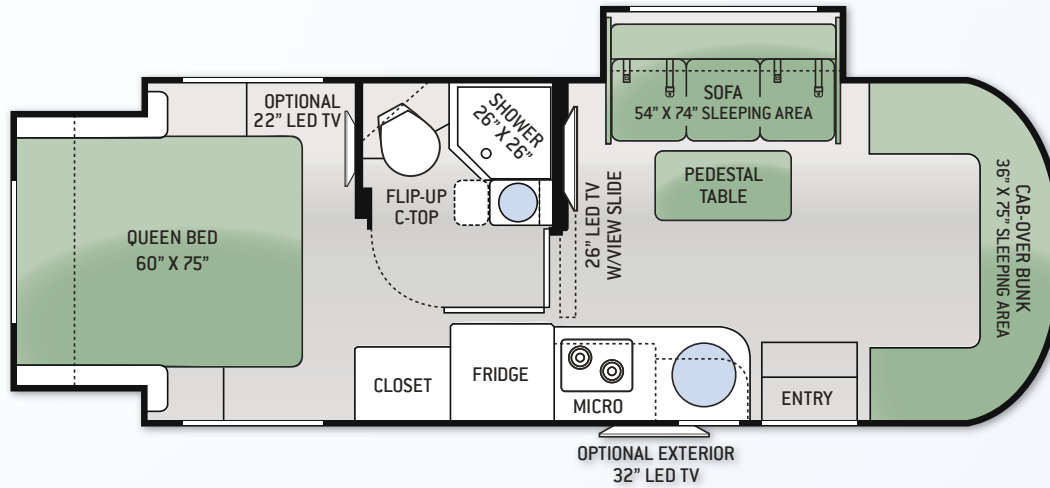
24SA



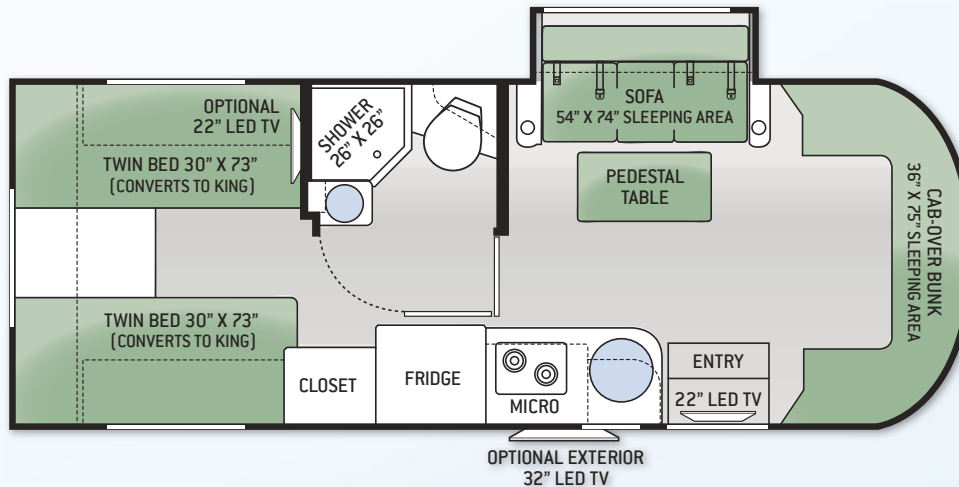
24SL



24SR



24ST



SIESTA SPRINTER 24SL

Chassis	Mercedes-Benz Sprinter
Gross Vehicle (GVWR)	11,030
Gross Combined (GCWR)	15,250
Wheel Base	170.3"
Exterior Length (w/o ladder)	24'-10"
Exterior Height (w/AC)	10'-10"
Exterior Width (w/o mirrors)	90"
Interior Height	80"
Awning Size	13'
Fuel (gal)	26.4
LPG (lbs)	68.2
Fresh/Waste/Gray Water (gal)	40 / 38 / 38
Water Heater (gal)	6
Furnace (BTUs)	25,000
Exterior Storage Capacity (cu. ft.)	61

SIESTA SPRINTER 24SR

Chassis	Mercedes-Benz Sprinter
Gross Vehicle (GVWR)	11,030
Gross Combined (GCWR)	15,250
Wheel Base	170.3"
Exterior Length (w/o ladder)	24'-10"
Exterior Height (w/AC)	10'-10"
Exterior Width (w/o mirrors)	90"
Interior Height	80"
Awning Size	11'
Fuel (gal)	26.4
LPG (lbs)	68.2
Fresh/Waste/Gray Water (gal)	40 / 38 / 38
Water Heater (gal)	6
Furnace (BTUs)	25,000
Exterior Storage Capacity (cu. ft.)	39

SIESTA SPRINTER 24ST

Chassis	Mercedes-Benz Sprinter
Gross Vehicle (GVWR)	11,030
Gross Combined (GCWR)	15,250
Wheel Base	170.3"
Exterior Length (w/o ladder)	25'-9"
Exterior Height (w/AC)	10'-10"
Exterior Width (w/o mirrors)	90"
Interior Height	80"
Awning Size	11'
Fuel (gal)	26.4
LPG (lbs)	68.2
Fresh/Waste/Gray Water (gal)	42 / 22 / 24
Water Heater (gal)	6
Furnace (BTUs)	25,000
Exterior Storage Capacity (cu. ft.)	62.9

SIESTA STANDARDS & OPTIONS

CONSTRUCTION & EXTERIOR

- One-Piece Fiberglass Front & Rear Caps
- HD-MAX™ Exterior with Graphics Package
- MEGA Storage™ Compartment
- Rotocast Storage Compartments
- Power Patio Awning with Integrated LED Lighting
- Roof Ladder
- Outside Shower

CONSTRUCTION & EXTERIOR OPTIONS

- Automatic Hydraulic Leveling Jacks
- Full-Body Paint Package with Gel-Coat Sidewalls

AUTOMOTIVE & COCKPIT

- Touchscreen Dash Radio w/CD Player & Back-Up Monitor
- Heated/Remote Exterior Mirrors with Integrated Side View Cameras
- Wood Dash Applique
- Leatherette Captain's Chairs
- Fiberglass Running Boards
- Valve Stem Extenders
- 8,000-lb. Trailer Hitch with 7-pin Round Connector*

AUTOMOTIVE & COCKPIT OPTIONS

- Spare Tire Kit
- Power Driver's Seat

INTERIOR

- Residential Vinyl Flooring Throughout
- Leatherette Dream Dinette™ Booth
- Leatherette Sofa with Air Bed
- Window Privacy Shades

INTERIOR OPTION

- Single Child Safety Seat Tether

KITCHEN

- Double Door Refrigerator
- 3-Burner Gas Cooktop with Cover & Oven
- Over-the-Range Microwave Oven
- Solid Surface Kitchen, Sink Cover & Dinette Countertops
- Flip-up Countertop Extension

BEDROOM & BATHROOM

- Queen Size Deluxe Plush Mattress
- Shower with Glass Door
- Foot Flush Porcelain Toilet
- 12-volt Attic Fan in Bedroom*

ENTERTAINMENT

- Cab-Over Entertainment Center with 32" LED TV & DVD Player
- 22" LED TV in Bedroom
- Coach Radio System with Exterior Speakers
- Cable TV Ready

ENTERTAINMENT OPTION

- Exterior 22" LED TV

ELECTRICAL & PLUMBING

- Cummins Onan® RV QG 4000 Gas Generator
- 30-amp Service with Shoreline Power Cord
- Automatic Shoreline-to-Generator Transfer Switch
- 13,500 BTU Low-Profile Air Conditioner
- Emergency Start Switch
- 6-gallon DSI Gas/Electric Water Heater
- Water Heater Bypass System
- Black Tank Flush System
- Systems Control Center

ELECTRICAL & PLUMBING OPTIONS

- 15,000 BTU Low-Profile Air Conditioner
- Second Auxiliary House Battery
- Holding Tanks with Heat Pads

SIESTA SPRINTER STANDARDS & OPTIONS

CONSTRUCTION & EXTERIOR

- HD-MAX™ Exterior with Graphics Package
- Side Hinged Slab Luggage Doors
- Rotocast Storage Compartments
- Power Patio Awning with Integrated LED Lighting
- Frameless Windows
- Roof Ladder (24SA, 24SL & 24ST)
- Outside Shower

CONSTRUCTION & EXTERIOR OPTION

- Full-Body Paint Package with Gel-Coat Sidewalls

AUTOMOTIVE & COCKPIT

- Touchscreen Dash Radio w/CD Player & Back-up Monitor
- Heated/Remote Exterior Mirrors
- Wood Dash Applique*
- Leatherette Captain's Chairs
- Fiberglass Running Boards
- 5,000-lb. Trailer Hitch
- Spare Tire

INTERIOR

- Residential Vinyl Flooring Throughout
- Electric Euro-Skylight
- Leatherette U-Shaped Dinette (24SA)
- Leatherette L-Shaped Sofa with Removable Pedestal Table (24SL)
- Leatherette Sofa (24SL)
- Window Privacy Roller Shades

INTERIOR OPTIONS

- Leatherette Sofa & Pedestal Table (STD 24SR & 24ST)
- Single Child Safety Tether (24SA & 24SL / N/A with Sofa Option)

KITCHEN

- Double Door Refrigerator with Stainless Steel Door Inserts
- European 2-Burner Gas Cooktop with Glass Cover

- Convection Microwave Oven
- Solid Surface Kitchen & Dinette Countertops

BEDROOM & BATHROOM

- Denver Mattress® Full Size Bed (24SA)
- Queen Size Bed (24SR)
- Two (2) Twin Beds with Upholstered Covers – Converts to King Size Bed (24ST)
- Foot Flush Porcelain Toilet

BEDROOM & BATHROOM OPTION

- 12-volt Attic Fan in Bedroom (24SR & 24ST)

ENTERTAINMENT

- 22" LED TV with DVD Player (24SA, 24SL & 24ST)
- Mid-Ship Entertainment Center with 26" LED TV on Always-in-View™ Slide System & DVD Player (24SR)
- Cable TV Ready

ENTERTAINMENT OPTIONS

- 26" LED TV & Storage Cabinets in Cab-Over (24SA, 24SL & 24ST)
- Front Storage Cabinets in Cab-Over (24SR)
- 22" LED TV in Bedroom (24SA, 24SR & 24ST)
- Exterior 32" LED TV

ELECTRICAL & PLUMBING

- Cummins Onan® RV QG 3600 LP Generator
- 30-amp Service with Shoreline Power Cord
- Automatic Shoreline-to-Generator Transfer Switch
- 13,500 BTU Low-Profile Air Conditioner
- 6-gallon DSI Gas/Electric Water Heater
- Enclosed Heated Holding Tanks (24ST)
- Systems Control Center

ELECTRICAL & PLUMBING OPTIONS

- Cummins Onan® RV QD 3200 Diesel Generator
- Second Auxiliary House Battery
- Holding Tanks with Heat Pads (24SA, 24SL & 24SR)

*INCLUDED ON UNITS BUILT AFTER 10/11/14

Thor Motor Coach is the industry leader in innovative design and builds a variety of unique styles, sizes and floor plans that feel custom-made – at a truly competitive price.

IMPORTANT - PLEASE READ: This brochure reflects product design, fabrication, material, components and specifications at the date of printing, which date is disclosed on the last page. PLEASE VISIT US ONLINE AT THORMOTORCOACH.COM OR CONSULT WITH YOUR SELLING DEALERSHIP FOR THE LATEST IN STANDARDS, OPTIONS, SPECIFICATION AND TECHNICAL INFORMATION. Photographs in the brochure may depict optional equipment or may only be available in certain floor plans. Components, appliances and the chassis may have been manufactured in a calendar year before the vehicle's designated model year. All capacities are approximate. The actual length of the vehicle may differ from that indicated in the brochure due to variances in the manufacturing processes and/or installed components. All dry weights are based on standard model features and do not include optional features or equipment. Component part and appliance manufacturers issue limited warranties covering portions of the vehicle not covered under the limited warranty we issue.

Copyright Thor Motor Coach, Inc. © 12/15/14

YOUR LOCAL THOR MOTOR COACH DEALER



THOR
MOTOR COACH



Siesta-RV.com

Made to fit.

P.O. Box 1486, Elkhart, IN 46515
Sales Department: 800.860.5658
Customer Service: 877.855.2867



Siesta-Sprinter.com