

MIRADA



Coachmen

Leader to the Great Outdoors.

MIRADA

Coachmen[®]



TAKE **LIFE** BY THE STEERING WHEEL.

Don't sit and wait for freedom to land in your lap. Reach out and grab it by choosing the all-new Mirada by Coachmen. Whether you want to relax with your family on the weekends or travel the country, the Mirada will allow you to experience freedom on a whole new level.

Exterior Color Selections



Mirada is available in standard taupe fiberglass with partial maroon or black paint and vinyl graphics (pictured above) or in optional full-body paint (pictured on cover).



DESIGNED FOR FREEDOM, DOWN TO THE LAST DETAIL.

It's the details that separate the ordinary from the exceptional. And the Mirada is packed with features that set it apart from others in its class.

A full fiberglass body available in three sharp designs. Large, roomy floor plans that provide unrivaled comfort. Smart, affordable options that enhance the whole experience.

It all adds up to an exceptional motorhome—at an exceptionally affordable price.

Features:

- Newly redesigned front end for a sleeker, more aerodynamic look
- A 20,500-lb. or 22,000-lb. chassis (depending on model) means durability and toughness
- Full basement featuring pass-through storage for oversized and outdoor gear
- Upgraded heavy-duty power step for more secure entry
- Upgraded exterior power-heated chrome mirrors
- Optional outdoor kitchen and entertainment center featuring a grill with quick LP connect and a 32" TV with DVD player
- Optional side cameras and frameless tinted windows
- One-piece radius fiberglass roof for added strength and durability

STEP INSIDE, RELAX, AND ENJOY THE VIEW.

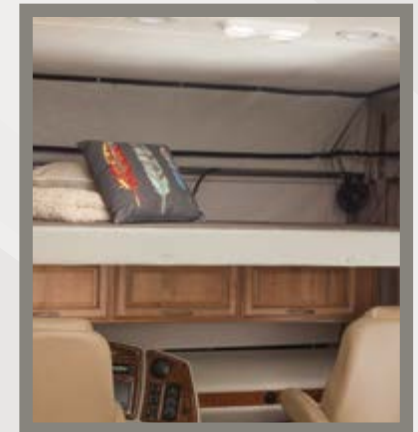
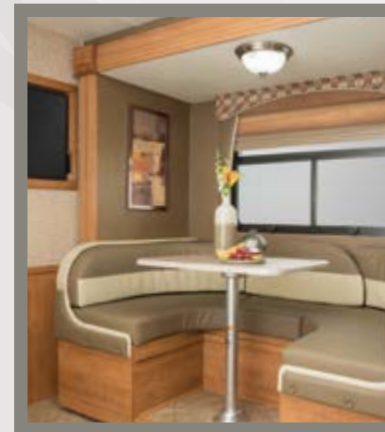
You may be on the road to see the great outdoors. But when you own a Mirada, the view inside is pretty stunning, too.

The sights include a fully loaded, well-appointed kitchen, a spacious living area with a 39" LCD TV, an attractive dinette, and beautiful cabinetry available in spiced or honey glazed maple.

Although it's full of great amenities, you'll never feel cramped in the Mirada. Its sprawling floor plans ensure comfort and ease of movement, from the cockpit to the bedroom.

Features:

- Solid surface kitchen countertops match thermofoil surfaces throughout the rest of the coach for a consistently attractive look
- Stainless-steel kitchen sink features telescoping faucet for ease of use
- Optional stainless-steel appliance package and vinyl tile floor (*featured in photos*)
- An optional power drop-down bunk provides additional sleep capacity



Mirada 35KB shown above



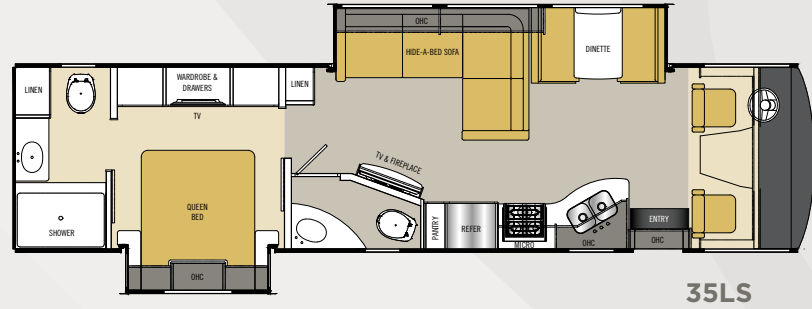
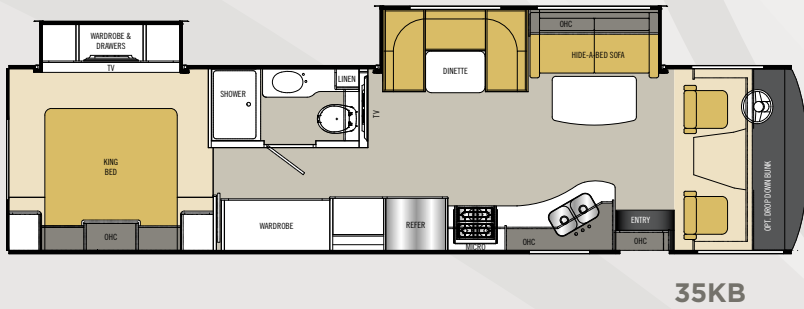
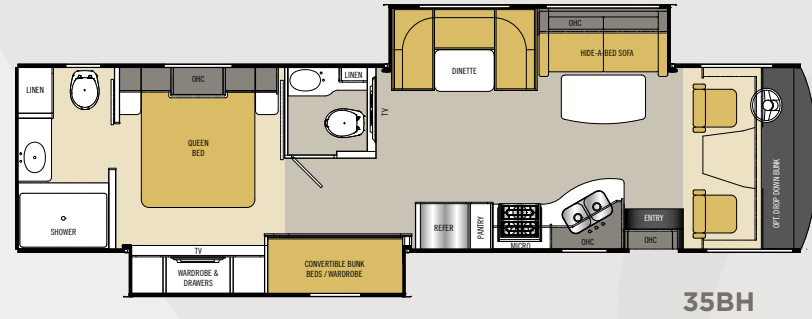
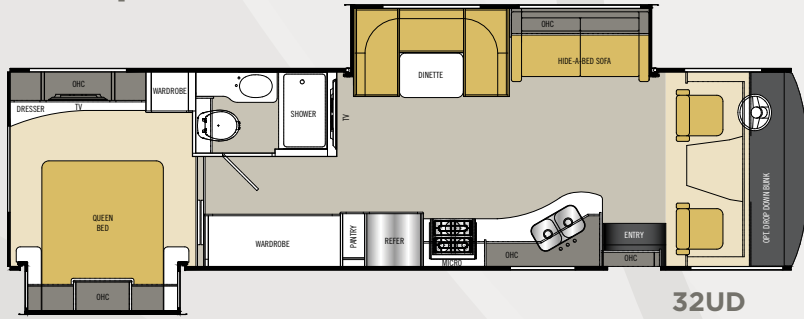
DRIVES LIKE A DREAM. SLEEPS LIKE ONE, TOO.



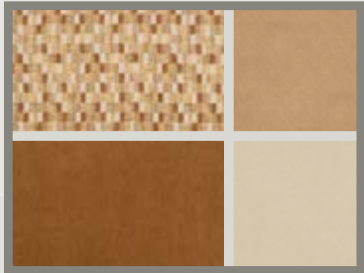
The Mirada bedroom is designed for pure relaxation. One floor plan even includes a king-sized bed, an upgraded feature not typically available in this class. Storage is plentiful—there's even some behind the 32" LCD TV. The bathroom is practical and stylish, featuring a glass shower door, a stainless-steel sink, and a porcelain toilet with a foot flush for added convenience.

Finally, you have the freedom to choose the floor plans, wood colors, and fabric colors that best suit you, so you can make the Mirada truly your own.

Floorplans:



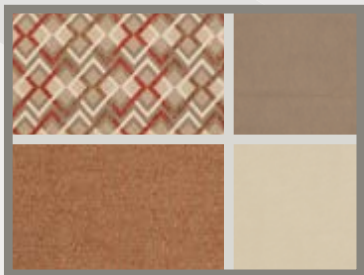
Interior Decor Color Selections



Ridge Manor



North Bridge



Valley Crest

Interior Wood Color Selections



Spiced Maple



Honey Glazed Maple

Available in four floorplans, two interior wood color selections, and three interior fabric selections, you can customize the Mirada to suit your personal needs and style.

The end result? A motorhome that makes you feel right at home, no matter where you are.

STANDARD FEATURES

INTERIOR APPOINTMENTS

Mulan Oat Wall Board - Coach
Glo Pecan Wall Board - Accent
Solid Surface Kitchen Countertop
Congoleum Linoleum
Antique Nickel Hardware
Hardwood Cab Doors / Raised Panel
Overhead Doors
Ball Bearing Drawer Guides Throughout
Radius Slider Windows w/ Safety Glass
Reclining / Swivel Pilot Seats
Visionary Sofa Hide-A-Bed
L-Shape Sofa Lounge w/ Visionary
(35LS only)
Pleated Day/Night Shades Throughout
Power Windshield Shade w/ Manual
Side Shade

INTERIOR EQUIPMENT

AM/FM Radio and CD Player
Satellite Prep Wire to Roof
Cable TV Jack
LP Leak Alarm and Smoke Detector
Carbon Monoxide Detector
Fire Extinguisher
TV Antenna and Roto Package
39" LCD TV Coach
DVD Player in Living room
Dream Dinette (35LS Only)
Fireplace Electric (35LS Only)

GALLEY

Flush Mount, Double Door Refrigerator
High Rise Kitchen Faucet
Double Bowl Stainless Kitchen Sink
Flush Mounted 3-Burner Range w/ Oven

Solid Surface Range and Sink Covers
30" OTR Microwave Oven
Pull-Out Pantry with Counter Top
(N/A 35KB)
Thermofoil Backsplash

BATH AND WATER

Stainless Lavatory Sink
Porcelain Toilet w/ Foot Flush
One-Piece ABS Shower Surround
Glass Shower Door
Power Bath Vent
6-Gallon (Gas) D.S.I. Water Heater
Demand Water Pump
Shower Skylight
Stackable Washer/Dryer Prep
(35KB Only)
Whole Coach Water Filter (EXC. CSA)

SLEEPING

Queen Bed 60W X 74L (N/A 35KB)
King Bed 70W X 75L (35KB)
Bunk Beds Convert to Wardrobe (35BH)
Deluxe Innerspring Mattress - 312 Coil
Bedsprad and Pillows w/ Shams
Designer Headboard (N/A 35BH
& 35LS)
32" LCD TV Bedroom

ELECTRICAL/HEATING/AC

30' 50-Amp Power Cord
55-Amp, 110/12-Volt Power Converter
GFI Circuit
Outside Recept (DS)
Emergency Start Switch
Lighted Trunk Boxes

Patio Light
30,000-BTU E.I. Furnace
13,500-BTU Roof Air Conditioner-Ducted
2nd 13,500-BTU Roof AC
Dual Coach Batteries
5.5-Onan Generator
Coach Command Center

AUTOMOTIVE/EXTERIOR

Auxiliary Dash Fans
Tilt Steering Wheel
Cruise Control
Intermittent Wipers
Dash Air Conditioning
19.5" Radial Tires
Rear Mud Flaps Only
Power Entrance Step-Double
Crowned, Laminated Fiberglass Roof
Full Basement w/ Pass-Thru Storage
Radius Trunk Doors w/ Slam Latch
High Gloss 'Taupe' Sidewalls
Fiberglass Front Cap & Rear Cap
Dead Bolt Lock - Entrance Door
26" Radius Entry Door
Power Patio Awning
5,000 lb. Towing Hitch w/ 7-Way Plug
Back Up Camera (3-Way Ready)
Rear Mounted Roof Ladder
Non-Powered Exterior Mirrors
Stainless Steel Wheel Liners
Automatic Leveling Jacks
Slide-Out Room Awnings
20-Gallon LP Tank

OPTIONAL FEATURES

Power Drop-Down Front Bunk Bed
(N/A35LS)
Valve Stem Extenders
13" TV w/ DVD Player in Each Bunk
(35BH Only)
DVD Player in Bedroom
8-cu. ft. Double Door Refrigerator
Vinyl Tile Floor
Upgrade Mattress
Frameless Tinted Windows w/ Safety
Glass
Dual Pane Windows
Side Cameras
Power-Heated Mirror
Outside Entertainment Center w/ 32"
TV & DVD
6-Gallon (Gas/Elec) D.S.I. Water Heater
Diamond Shield Paint Protection -
(Required with Full Paint)
CSA Upfit
① CD-MVSA (Canadian Motor Vehicle
Safety Act)
Travel Easy Roadside Assistance -
Provided by Coach-Net

STAINLESS APPLIANCE PACKAGE

18-cu. ft. Stainless-Steel Residential
Refrigerator
Stainless-Steel OTR Microwave
Atwood 17" Stainless-Steel
Range/Oven
1,000-Watt Inverter w/ two 6-Volt Batteries

EXTERIOR KITCHEN

2.5-cu. ft. Refrigerator, Sink, Portable
Gas Grill, Stand, Propane Hose, and
Hook-Up

Notes:

①Mandatory For All Canadian Provinces



FREE One Year Membership – Coachmen Owners Association!

Coachmen is proud to sponsor the largest manufacturer sponsored camping club in North America ... Coachmen Owners' Association (COA). COA provides you a world of ways to enjoy your RV. This is **FUN ON OVERDRIVE** and provides: Free Trip Routing, Exciting Tours & Rallies, Free Campground Directory, Local/State Club Activities, Easy RVing Magazine Free, Theme Park Discounts, Fuel Discounts, Free onebigplanet® Memberships with discounts at 180,000 merchants and Much More!

Every new Coachmen RV buyer is eligible for a 1 Year FREE membership in the Coachmen Owners' Association. It all adds up to an easy ownership experience!

SPECIFICATIONS

CLASS A GAS	32UD	35BH	35LS	35KB
FORD ENGINE V-10 6.8L 3-Valve	362 HP/457 TRQ	362 HP/457 TRQ	362 HP/457 TRQ	362 HP/457 TRQ
WHEEL BASE	228"	242"	242"	242"
GVWR	20,500 lbs	22,000 lbs	22,000 lbs	22,000 lbs
GCWR	26,000 lbs	26,000 lbs	26,000 lbs	26,000 lbs
FUEL CAPACITY	80 gal	80 gal	80 gal	80 gal
LP GAS CAPACITY (gallons)	20 gal	20 gal	20 gal	20 gal
FURNACE (BTUs)	30,000	30,000	30,000	30,000
EXTERIOR LENGTH (w/o ladder)	34' 6"	36' 10"	36' 10"	36' 10"
EXTERIOR HEIGHT (with AC)	12' 3"	12' 3"	12' 3"	12' 3"
EXTERIOR WIDTH	102"	102"	102"	102"
FRESH WATER	70 gal	70 gal	70 gal	70 gal
GREY WATER	45 gal	45/45 gal	45 gal	45 gal
BLACK WATER	45 gal	45/45 gal	45/45 gal	45 gal
WATER HEATER	6 gal	6 gal	6 gal	6 gal
AWNING SIZE	18'	12'	18'	20'

GVWR (Gross Vehicle Weight Rating): The maximum permissible weight of the unit, including the unloaded vehicle weight (UVW) plus all fluids, cargo, optional equipment and accessories. For safety and product performance, do not exceed the GVWR.

GCWR (Gross Combined Weight Rating): The maximum total weight of the loaded unit, plus a tow vehicle. This includes the weight of both the unit and tow vehicle, fuel for each, all other fluids, cargo, occupants, optional equipment and accessories.

Important Note: All capacities are approximate, and all dimensions are nominal. Coachmen motorhomes are designed to allow for a wide variety of uses, extended trips with two people or short trips with multiple people. Accordingly, each unit allows ample room for sleeping, seating, fluids and cargo. While the customer is the beneficiary of this design, the customer also bears the responsibility to select the proper combination of passengers, cargo, load, and tow vehicle without exceeding the chassis weight capabilities. Consumer may need additional braking capacity to tow loads greater than 1,000 pounds.

Seat belts should always be worn for passenger safety. Seat belts are provided at most locations to allow convenience in selecting which

seat to occupy. However, it is not intended that all seating positions equipped with a seat belt may be occupied while the vehicle is in motion, without regard to other weight factors.

All Coachmen motorhomes are designed to ensure that the number of passengers allowed while the vehicle is in motion will always at least equal the stated sleeping capacity. Though extra seat belts may be provided, for your safety and the proper operation of your vehicle, limit your passengers to the number allowed by the Net Carrying Capacity of your vehicle.

All information contained in this brochure is believed to be accurate at the time of publication. However, during the model year, it may be necessary to make revisions and Coachmen reserves the right to make all such changes without notice, including prices, colors, materials, equipment and specifications as well as the addition of new models and the discontinuance of models shown in this brochure. Therefore, please consult with your Coachmen dealer and confirm the existence of any materials, design or specifications that are material to your purchase decision.

© Copyright 2014 Coachmen RV a Division of Forest River Inc - All Rights Reserved



Forest River Inc. encourages our customers to purchase their Forest River products from a local dealership whenever possible because of the following reasons:

1. Forest River, Inc. dealers are independently owned and operated businesses so priority service and scheduling is at their discretion and is often provided to customers that purchased their unit at that dealership.
2. Purchasing locally allows customers to establish meaningful relationships with a dealer, enhancing the RV experience through assistance with product questions, user tips or RV regulations for your state or country, and much more!
3. Canadian customers must meet requirements to bring an RV purchased out of the country to their home. These requirements may involve additional inspections and certifications, taxes and fees. Your local Canadian dealer is a professional at meeting these requirements.
4. Scheduling timely warranty repairs and adjustments through a local dealership provides far greater flexibility and convenience to you, the customer!

It is the goal of Forest River, Inc. that all of our RV owners fully enjoy the RV experience and that customer satisfaction meets or exceeds their expectations!



Travel Easy™ Roadside Assistance!

RVing is easier with Coachmen's Travel Easy™ Roadside Assistance provided FREE the first year of ownership to those who purchase a New Coachmen RV. Administered by Coach-Net, this service provides you with 24/7 operational, technical and emergency road service coverage. Also included is towing, fuel delivery, jump starts, lockout service, tire changes, mobile mechanic and unlimited technical assistance. Anywhere. Anytime. Travel Easy™ is the security of knowing that help is an easy phone call away.



Coachmen RV, a Division of Forest River Inc.,
A Berkshire Hathaway Company
423 N. Main St., P.O. Box 30, Middlebury, IN 46540

To learn more about Coachmen RV and our products and see how Coachmen is making the easy life easier, visit www.coachmenrv.com.



Learn More
Scan this barcode using a QR Reader on your smart phone to learn more about Forest River.

