

by Dutchmen

VOLTAGE

# VOLTAGE



NOT ALL TOY HAULERS ARE CREATED EQUAL

# FIRST IN CLASS

## THE VOLTAGE

There's a reason **Voltage** is the most popular toy hauler in its class. Its designers held nothing back when it came to feature-rich amenities and ample amounts of storage. Tall ceilings, a spacious executive bedroom and a gourmet kitchen with quartz countertops set Voltage apart from all the others. It's truly, First In Class.



### FINGERTIP CONTROL

Quiet, cool air conditioning with three zones, individually controlled, allows you to enjoy pleasant temperatures wherever you are.



### SOUND EVERYWHERE

Four zones of entertainment include 4 LED TVs with sat/cable prep, garage and exterior entertainment, plus a sound bar with subwoofer for your living space.



### THE DAILY MASSAGE

With controls at your side, let the rigors of the day be worked out in your calming, heated massage furniture.





## LIVING THE DREAM

Don't settle for less. Polished stainless steel appliances not only add sleek style to your kitchen, but they also offer residential-sized storage space for the chef needing unlimited ingredient options.

- 12 or 18 cubic foot stainless steel refrigerator w/pantry
- Full-sized convection microwave with rotating tray
- Full-sized 21" stainless steel oven
- Hardwood cabinetry
- 3-Burner ranges with upgraded burner
- Quartz counter tops
- 3rd A/C power management throughout
- Washer/dryer connections



## RAMP SYSTEM VERSATILITY

With the Voltage's versatile ramp system, you can transform the garage area into a sleeping area or even a cozy patio, complete with entry steps and a rear awning.



## SLEEP SOUNDLY

Your memory foam mattress molds to the contours of your body, relieving pressure during sleep for complete comfort.

Voltage 3970 | Hazel

## EASY-TO-LOAD



Voltage owners love our cavernous cargo areas with pass-through storage capability.



## PAINT PACKAGES

With Voltage's numerous exterior paint options, you can choose the perfect look to match your taste or your truck. For more details, visit [dutchmen.com/voltage/paint-packages](http://dutchmen.com/voltage/paint-packages) or contact your local dealership.

### INTERIOR DÉCOR CHOICES

Hazel

Raven

Mocha



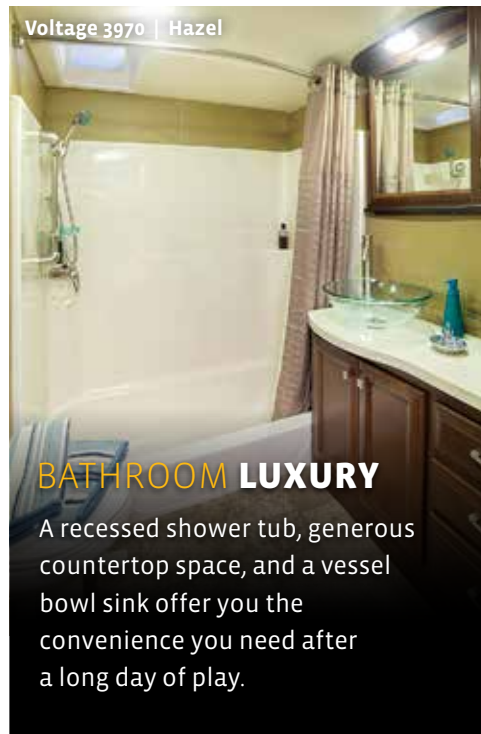
Voltage 3970 | Hazel



## PACK TO THE MAX

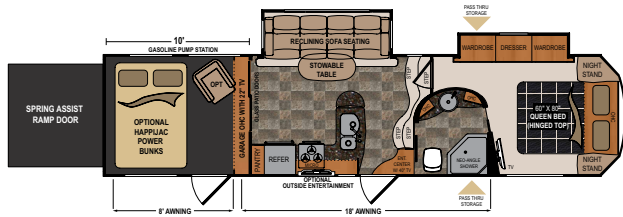
With Voltage, you're never short on storage. Spacious closets, drawers, and cabinets allow you to take it all on the road.

Voltage 3970 | Hazel



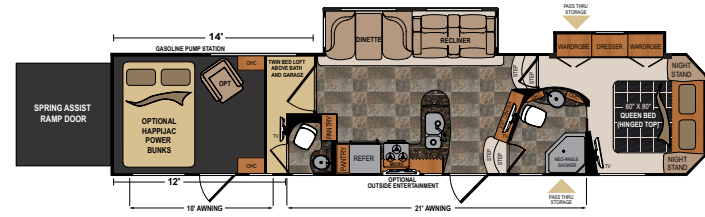
## BATHROOM LUXURY

A recessed shower tub, generous countertop space, and a vessel bowl sink offer you the convenience you need after a long day of play.



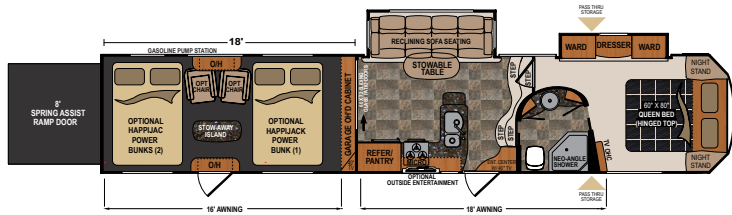
**VOLTAGE FIFTH WHEEL | 3200**

Ext. Length: 35' 11" Ext. Height: 13' 1" Average Shipping Weight: 13,140 Sleeps: 7



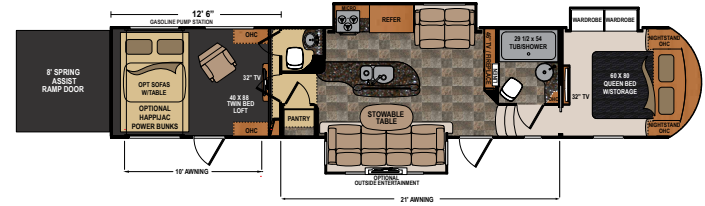
**VOLTAGE FIFTH WHEEL | 3800**

Ext. Length: 42' Ext. Height: 13' 3" Average Shipping Weight: 15,297 Sleeps: 7



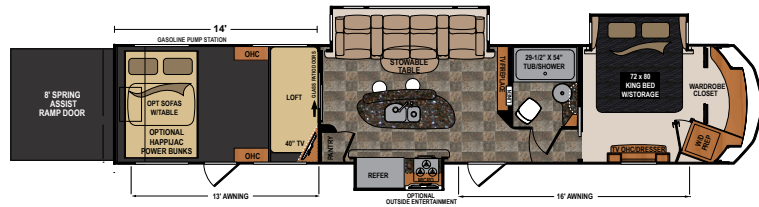
**VOLTAGE FIFTH WHEEL | 3818**

Ext. Length: 43' 10" Ext. Height: 13' 4" Average Shipping Weight: 15,278 Sleeps: 8



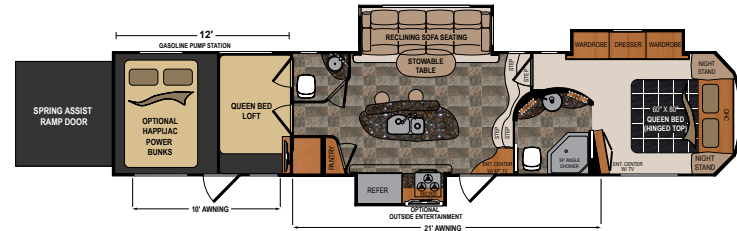
**VOLTAGE FIFTH WHEEL | 3895**

Ext. Length: 42' 11" Ext. Height: 13' 3" Average Shipping Weight: 15,880 Sleeps: 7



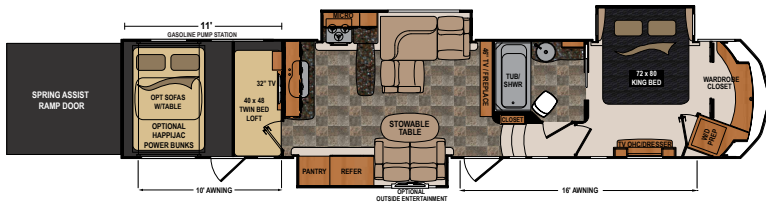
**VOLTAGE FIFTH WHEEL | 3914**

Ext. Length: 43' 10" Ext. Height: 13' 4" Average Shipping Weight: 16,100 Sleeps: 7



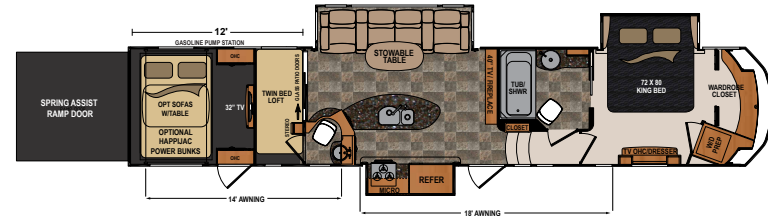
**VOLTAGE FIFTH WHEEL | 3950**

Ext. Length: 42' 5" Ext. Height: 13' 4" Average Shipping Weight: 15,674 Sleeps: 8



**VOLTAGE FIFTH WHEEL | 3970**

Ext. Length: 43' 10" Ext. Height: 13' 4" Average Shipping Weight: 16,171 Sleeps: 7



**VOLTAGE FIFTH WHEEL | 3990**

Ext. Length: 43' 9" Ext. Height: 13' 4" Average Shipping Weight: 16,257 Sleeps: 7

**DISCLAIMER:** Product information is as accurate as possible as of the date of publication of this brochure. All features, floor plans, and specifications in this brochure are subject to change without notice. Please also consult Dutchmen's website at [www.Dutchmen.com](http://www.Dutchmen.com) for more current product information and specifications. Tow Vehicle Disclaimer. **CAUTION:** Owners of Dutchmen recreational vehicles are solely responsible for the selection and proper use of tow vehicles. All customers should consult with a motor vehicle manufacturer or their dealer concerning the purchase and use of suitable tow vehicles for Dutchmen products. Dutchmen disclaims any liability or damages suffered as a result of the selection, operation, use or misuse of a tow vehicle. DUTCHMEN'S LIMITED WARRANTY DOES NOT COVER DAMAGE TO THE RECREATIONAL VEHICLE OR THE TOW VEHICLE AS A RESULT OF THE SELECTION, OPERATION, USE OR MISUSE OF THE TOW VEHICLE. REFERENCE DUTCHMEN MANUFACTURING OWNERS MANUAL FOR LIMITED WARRANTY DETAILS.

## VOLTAGE STANDARDS AND OPTIONS

### MANDATORY FEATURES

12 Cubic Foot Four Door Refrigerator  
(3200, 3800, 3818)

12V Tank Heater w/ Interior Switches

18 Cubic Foot Four Door Refrigerator  
(3895, 3914, 3950, 3970, 3990)

2nd A/C - Bedroom Ducted 15k  
BTU w/ Thermostat Sensor

2nd Awning Over Garage Entrance Door

6-Point Hydraulic Auto-Leveling System

Central Vacuum w/ Tools & Dust Pan

Equa Flex Suspension

Exterior Entertainment Center - LED TV  
in Locking Cabinet

NitroFill - Nitrogen Filled Tires

Pin Box - TrailAir Tri-Glide 21k

Residential Convection Microwave Oven

### EPIC SERIES PACKAGE

2nd 40 Gallon Fuel Tank

Frameless Windows

Galley Power Fan w/Rain Sensor

Hardwood Cabinet Stiles

Partial Paint Front Cap

Quad Entry Steps

Quartz Countertops

Residential Furniture w/LED

Lighting and Heated Seats

Residential Memory Foam Mattress

Upgraded Slam Latch Baggage Doors

### LUXURY INTERIOR PACKAGE

40" - 46" LED Main TV

Articulating TV Bracket in Main Living Area

Atwood 3 Burner Range & Range Cover

Atwood 10 Gal DSI Water Heater  
w/19.7 GPH Recovery

Day/Night Shades in Main Living Area

LED Puck Lighting

Linc Remote

Made in America MCD Blinds

One Piece Fiberglass Shower w/Seat

Pendant Lighting

Residential Convection Microwave Oven

Residential Duvet Covers

Sat Prep in Every TV Location

Sound Bar w/Subwoofer

### EXTERIOR PACKAGE

1" Thick Metal Slam Latch Baggage Doors

16" Aluminum Wheels

50 AMP Service

7,000 LB Axles w/Ultra Lube

7,040 LB Load Range E-Rated HD Tires

Collapsible Exterior Ladder

Detachable Roof Ladder

Digital TV Antenna w/Booster

Dual Gas Tanks (40 & 30 Gallon)

Exterior Convenience Center w/  
Hidden Water Connections

Generator Prep w/Hour Meter and  
Interior Start/Stop Switch

Ground Effects Light Package

Large Electric Awning

Pump Station Timer Switch

Spare Tire w/Carrier

Tinted Safety Glass Frameless Windows

Updated Bathroom Countertops

Upgraded Graphics

Upgraded Residential Faucet

Upgraded Residential Furniture with  
Heated and Massaging Seats

Water Heater By-Pass

### GARAGE PACKAGE

2 Indoor & Outdoor Speakers

2,500 LB Tiedowns

22" Diamond Plate

5' Safety Glass Patio Door w/Screen (Select Models)

Double Sliding Glass Patio Door (Select Models)

Full Size 30" Entry Door w/Screen & Gas Strut

Indoor/Outdoor Speaker On/Off Switch

Insulated Heat & A/C Ducts

LED-TV

Metal Ram Air Vents (2)

Night Shades

Privacy Curtain w/Tieback (Select Models)

Touch Screen Stereo

Tuff Ply Gas & Oil Resistant Flooring

Upgraded Wood Entrance Door w/  
Glass Insert (Select Models)

Wall-To-Wall Dovetail Storage

Washer/Dryer Prep

### GENERAL OPTIONS

Generator Ready (Generator Prep)

Onan 5.5 kw Gas Generator

### OPTIONS

3rd A/C - Garage 13.5k BTU w/  
Load Management System

Voltage Chair

2nd Voltage Chair

Bathroom Power Fan w/Rain Sensor & Thermostat

Dual Pane Safety Glass Windows

Garage Power Fan w/Rain Sensor & Thermostat

Ramp Door Patio w/ Entry Steps and Awning

Removable, Edged Cargo Carpet

Three Season Patio Door IPO Screen Wall

Voltage HappiJac Electric Bed & Roll  
Over Sofa System w/Table

Voltage Logo Deck Chairs (2 per box)

### CUSTOM FIVE COLOR FULL BODY PAINT OPTIONS

Gel Coat Glass Upgrade

Black and Blue Paint

Black and Green Paint

Black and Red Paint

Black and Burgundy Paint

Black and Orange Paint

Black and Yellow Paint

Earth Tone and Burgundy Paint

Earth Tone and Burnt Orange

### CODES & SEALS

CSA Construction and Seal

RVIA Seal

State Seal (where applicable)

Winterization (Oct - April)

## VOLTAGE SPECIFICATIONS

FLOORPLAN	DIMENSIONS			WEIGHTS (LBS.)			TANKS (GALS.)		
	*EXTERIOR TRAVEL LENGTH	EXTERIOR WIDTH	EXTERIOR HEIGHT (WITH A/C)	**AVERAGE SHIPPING WEIGHT	DRY HITCH WEIGHT	CARGO CARRYING CAPACITY	***FRESH WATER CAPACITY	GREY WATER CAPACITY	BLACK WATER CAPACITY
3200	35' 11"	100"	13' 1"	13,140	2,628	3,360	160	75	45
3800	42'	100"	13' 3"	15,297	3,517	3,703	160	90	90
3818	43' 10"	100"	13' 4"	15,278	3,484	4,722	160	75	45
3895	42' 11"	100"	13' 3"	15,880	3,493	4,120	160	107	90
3914	43' 10"	100"	13' 4"	16,100	3,333	3,900	160	107	45
3950	42' 5"	100"	13' 4"	15,674	3,292	4,325	160	107	90
3970	43' 10"	100"	13' 4"	16,171	3,530	3,829	160	90	45
3990	43' 9"	100"	13' 4"	16,257	3,414	3,743	160	90	90

\*Length is defined as the distance from the centerline of hitch pin/coupler to rear bumper of trailer. \*\*Our weights represent how most units are built, inclusive of many commonly-ordered options. \*\*\*Fresh water capacity includes water heater capacity.

# FIRST IN CLASS



## Dutchmen—A North American Campground Classic.

Few manufacturers have built RVs for 25+ years, and only one has set the standard for innovation AND value. Dutchmen IS “A North American Campground Classic.”



# Dutchmen

# MORE STANDARD FEATURES MORE VALUE

Dutchmen RVs turn more heads on the lot and in the campground than any other. Why? While other manufacturers offer features as options, Dutchmen tends to make those same features standard. Call it “bang for the buck”, “more for your money”, or simply “more value”. **We’ve built a reputation for bringing RV owners more standard features for less money** over the years . . . and it’s a reputation we plan to keep.

PO BOX 2000 • 2164 Caragana Court • Goshen, Indiana 46527 • Sales: 574.537.0600 • [www.dutchmen.com](http://www.dutchmen.com)

VOL-HP0215-45K

# 3000

**STRONG**

**NATION WIDE DEALER NETWORK**

300 Dutchmen dealers across North America and the Industry Leading Service Center in Goshen, Indiana, combine for your peace of mind before, during, and after the sale. Rest assured that no matter where your travels take you, **the best-resourced RV manufacturing company in the world is behind you all the way.**

Scan this QR Code for a  
**360 view**  
of the Voltage interior.



**[www.dutchmen.com](http://www.dutchmen.com)**

Visit us online to see all of the Dutchmen brands, innovative models and spacious floor plans.

**From giving advice to servicing products, we consider our loyal dealers the best resource for learning about Dutchmen products.**

Your local dealer

