

# Grand Tour

**WINNEBAGO**<sup>TM</sup>



## *Why Grand Tour?*

- Unmatched performance of the exclusive Maxum Chassis®
- Multi-plex wall switches
- Stainless steel appliances
- Polished porcelain tile floors
- Carefree® Paramount awnings
- Electric fireplace
- Portable LP tank with gauge and LPG accessory connection (patio area)
- Keyless entry touch pad on assist handle
- Available premium paint package upgrade
- Standard Tailgate Package
- Aqua-Hot® zone heating, engine pre-heat, and continuous hot water





On the Cover: 42QL Solar Winds Premium Full-Body Paint

42QL Godiva with Glazed Java Cabinetry

## Take a Tour with Luxury

Introducing the final stop in luxurious living: the Grand Tour.® This incomparably elegant diesel-pusher is built to surpass even the most demanding expectations. Its refined elegance begins with the revolutionary Winnebago-exclusive Maxum Chassis® with lowered-rail construction, unequaled ride, performance, and storage capacity. Grasp the power of the 450-hp Cummins® diesel engine in the Villa luxury six-way adjustable cab seats with powered footrests, heat and massage, and power lumbar support. Upscale amenities unique to the Grand Tour include polished porcelain tiles, a large skylight with powered shade, keyless entry, and six full-body paint packages. Multi-plex wall switches located

throughout the all-electric coach allow you to control exterior and interior lights, HWH® hydraulic jacks, MCD power shades, slideout rooms, and more, while the Carefree® Paramount awnings extend from the top of the RV to three easy positions: slideout, slideout and window, and full-patio extension. The LED lighting and electric fireplace infuse the interior with luxurious ambiance while outdoor entertaining is a joy with the Tailgate Package offering a single-burner induction range top, steel counter, lockable refrigerator/freezer, storage area, and cold water access. Plus, an exterior entertainment center features an HDTV with sound bar and subwoofer so you can truly have the best of everything. The Grand Tour: the final stop for luxurious living.



**Recognized Quality** The Recreation Vehicle Dealer Association annually rates RV manufacturers and awards the Quality Circle Award to manufacturers that provide exceptional products, service, and support. Winnebago is proud to be the only manufacturer that has received this award every year since its inception.



## Best in Class

See how Winnebago takes motorhome design and function to the next level, and why we've earned the right to be called the Most Recognized Name in Motorhomes.®



Click on this icon throughout the brochure to link to more information on the web.



Maximize your living space with the **Extendable Sectional Sofa** (42QL). In a few short steps, you can extend the sofa to increase your seating capacity, or convert the sofa into a comfortable bed. A matching ottoman is included to kick back for movie nights.



The **Extendable Dining Table and Chairs** is the perfect place for your entertaining needs. The tabletop extends, allowing you to add additional chairs to accommodate your guests.



**Multi-Plex Wall Switches** are located throughout the coach, giving you control of your exterior and interior lights, hydraulic jacks, exterior service center, MCD powered blackout shades, slideout rooms, and more.



Keep your valuables hidden in the **Safe** concealed behind the HDTV.





42QL Godiva with Glazed Java Cabinetry

Ultimate relaxation begins with the exquisite Ultraleather™ furniture that includes an Extendable Sectional Sofa, ottoman, and recliner in the 42QL, or a comfortable sofa with matching ottoman in the 42HL. Enjoy your favorite movie on the Blu-ray™ Home Theater System by the comfort of the electric fireplace, but feel free to roam around too. The HDMI 4X4 Matrix Audio/Video Selection System ensures that whatever you watch can link simultaneously to the multiple HDTVs throughout the Grand Tour. This unique lounge also boasts luxurious features such as powered MCD solar/blackout shades, TrueAir® maximum comfort air conditioning, and porcelain tile flooring. Revel in the sunshine while relaxing indoors beneath the gorgeous large skylight with a powered shade. And now with backlit, push-button multi-plex wall switches conveniently located throughout the cabin, you can easily control all aspects of your interior experience.



Extendable Dining Table and Chairs



Home Theater System with Electric Fireplace





42QL Galley

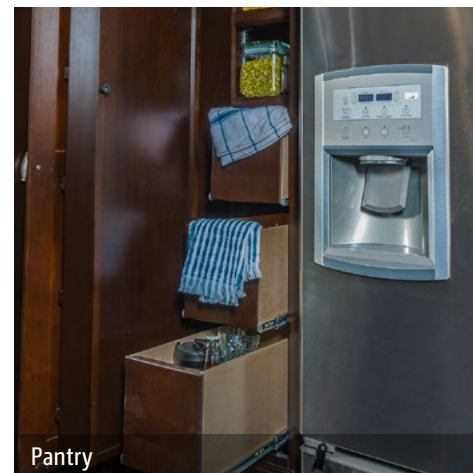
This top-of-the-line galley exudes the spirit of elegance with refined amenities such as stainless steel appliances, a two-burner induction range top with glass cover, French door refrigerator, microwave, and a drawer-style dishwasher. A convenient pull-out island and Corian® solid-surface countertops, along with a matching backsplash and sink covers, allow you to easily prepare everything from light snacks to full gourmet meals. Make your choice of glazed cabinetry to handsomely style the galley to your preference.



French Door Refrigerator/Freezer



Galley Pull-Out Island



Pantry



Microwave/Convection Oven





 42QL Bedroom

Live like a king from the comfort of your own motorhome when you experience the restful sleep in the powered king bed with the Ideal Rest® Natural Reserve digital comfort control mattress. In addition to the comfort of natural bamboo and cotton fibers and a duo-firmness reversible insert, you can also adjust each side of the bed to your ideal firmness level. With convenient nightstands, spacious his and her wardrobes, and an HDTV, this bedroom boasts the best in luxurious relaxation.

Both models feature a comfortable mid-coach half bath with a porcelain toilet and Corian countertop, while the luxurious master bath features the BIG Shower, a washer/dryer, a skylight, and a slideout linen cabinet.



42QL Master Bath



42QL Wardrobe





Dash

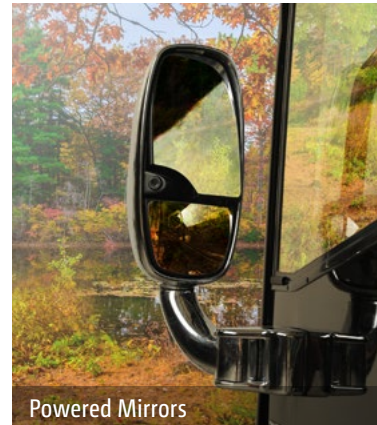
A turn of the key is all that lies between you and the freedom of the open road with large Contour™ windows and the smooth ride ensured by the Winnebago-exclusive Maxum Chassis®. The Grand Tour boasts elegance and integrity in all things, and with the Villa luxury six-way adjustable cab seats featuring powered footrests, heat and massage, and power lumbar support, you'll always ride in perfect comfort. There's even a repositioned seat pedestal so you can easily rotate for more seating in the lounge. The standard SiriusXM™ satellite radio (subscription not included) delivers over 100 channels of digital entertainment, and you'll experience navigational confidence with the Infotainment Center equipped with Rand McNally RV GPS and rearview and side cameras. Powered mirrors with defrost and house mode allow you to mirror what's on the monitor to any TV in the coach.



Infotainment Center



Adjustable Cab Seats with Powered Footrests



Powered Mirrors





42QL Powered Carefree Paramount Awning with LED Lighting

With four unique full-body paint packages, two premium paint packages, and an available 12" stainless steel valance panel, the Grand Tour is the epitome of traveling style. Its vast storage capacity allows you to pack all of your gear in easy-to-access spaces such as the standard 90" x 54" sliding storage tray. Hookups are quick and easy with the strategically color-coded service center. Relax underneath the powered Carefree® Paramount awnings while you enjoy the luxury of the exterior entertainment center and its large, swiveling HDTV. Choose to build memories with the Tailgate Package and its wealth of amenities such as a single-burner induction range top, stainless steel counter, refrigerator/freezer, and cold water access.



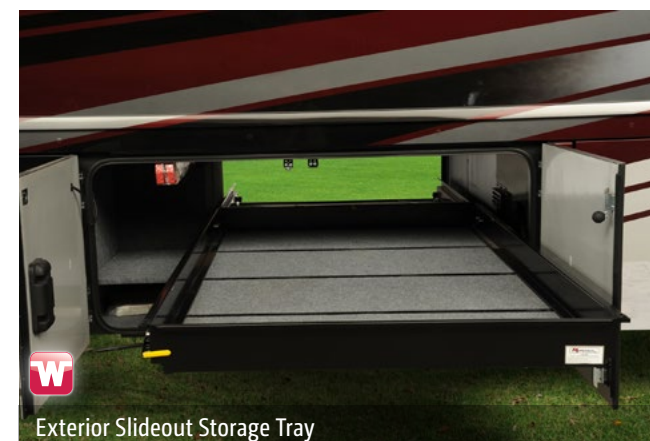
LED Lighting on Powered Awning



Tailgate Package



Exterior Entertainment Center with Soundbar



Exterior Slideout Storage Tray



### Fiberglass Roof

The crowned, one-piece fiberglass roof is backed by a 10-year limited parts-and-labor roof skin warranty.

### Thermo-Panel® Sidewalls

By layering fiberglass and high-density block foam insulation with welded aluminum support structures, we create some of the industry's strongest, most durable and lightweight sidewalls.

**E-Coating** An electrodeposition coating helps protect critical steel components.

**Embedded Steel** Metal substructures embedded into the sidewall provide solid attachment points to keep cabinets and appliances mounted securely in place.

**Solid Framework** Aluminum extruded in our own facility to our exacting standards creates an extremely strong and solid structural framework.

**Laser-Cut Tubing** Precision laser cutters create precise joints in structural steel that are stronger and require less welding.



**Interlocking Joints** Specially engineered interlocking joints connect the floor, sidewalls and roof where competitors often rely on simple screws to bear the weight.



**Steel Cab Structure** Our innovative all-steel cab SuperStructure adds durability, strength, and safety.

# SUPER STRUCTURE

BUILT TO LAST

Every coach—from our smallest Class C to our largest diesel-pusher model—is built to Winnebago's® legendary SuperStructure® construction standards. It's a process developed and refined over more than 50 years of building some of the strongest, most durable coaches in the industry.



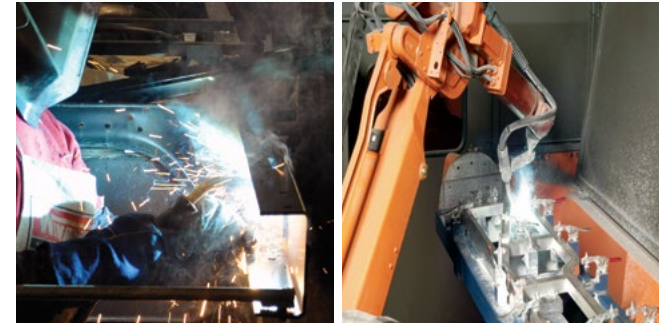
**TESTING** Before rolling out of our factories, every coach undergoes an extensive 113-point inspection. Each coach also passes a high-pressure water test that simulates rain at a rate of 50-inches per hour to check for leaks. During the design process, our computer simulations, physical testing center, and rigorous test track ensure each model is built to last.



**DETAILS** At Winnebago, we treat the features you can't see with the same care as the ones you can. Look in the access panels of some of our competitors' coaches and you'll see loose insulation and wires haphazardly strewn about. Winnebago maintains a clean fit and finish throughout so your coach will last for the long haul.



**BUILT IN-HOUSE** We extrude our own aluminum. We rotocast our own plastic components. In fact, we manufacture most of our own parts so they are designed to fit the space, rather than fitting the space to an awkward off-the-shelf component size.



**SUPER  
STRUCTURE**  
BUILT TO LAST

Visit [BetterBuiltRVs.com](http://BetterBuiltRVs.com) to gain real insight into what goes into a Winnebago motorhome.

**TAKE A TOUR** We're proud of our processes, state-of-the-art facilities, and the people who make Winnebago number one. We invite you to visit our complex in Forest City, Iowa, for a firsthand look at the dedication and technology behind every motorhome we build.

Call 641-585-6936 or 1-800-643-4892 or visit us online at [WinnebagoIнд.com/company/visit](http://WinnebagoIнд.com/company/visit) for more information.





3-point engine mounting reduces engine vibration.

Engine compression brake uses the engine to slow the coach, promoting longer brake life.

15,000-lb. trailer hitch.<sup>6</sup>

Allison® 3000 MH 6-speed automatic transmission includes a touchpad control for ease of use.

## MAXUM CHASSIS

ZF IFS front suspension and NeWay® rear air suspension provide superior ride and handling.

The lowered-rail design moves intrusive rails from storage areas, creating up to 196 cubic feet of storage.

Up to a 60° wheel cut provides a tighter turning radius and better maneuvering.

Rear axle incorporates proprietary gear machining for a smoother, quieter ride.

Taller, pass-through storage height accommodates bulky items.

Extra space in critical areas allows for more pass-through storage.

“Clean Air Diesel” 450-hp ISL Cummins® engine delivers hill-climbing power when you need it most.

Low frame rails create a lower center of gravity, improving stability.

Winnebago’s SuperStructure integrated with the lowered-rail design creates a chassis that is seven times stronger than typical raised-rail chassis designs.

Dual-fill fuel tank.

Color-coded air lines make service easy.

Michelin® tires and polished aluminum wheels look sharp.

4-wheel ABS anti-lock air brakes provide fast stopping power.

## A True Work of Art

You may not be able to see the Maxum Chassis as you’re driving through the Rockies, but you’ll know it’s there. Its powerful Cummins turbo-charged diesel engine and Allison® transmission go to work so you don’t have to sweat the peaks and valleys ahead.

Through a strong partnership with Freightliner, the undisputed leader in diesel motorhome

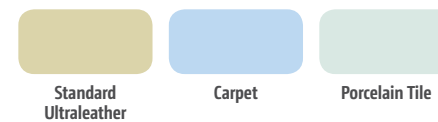
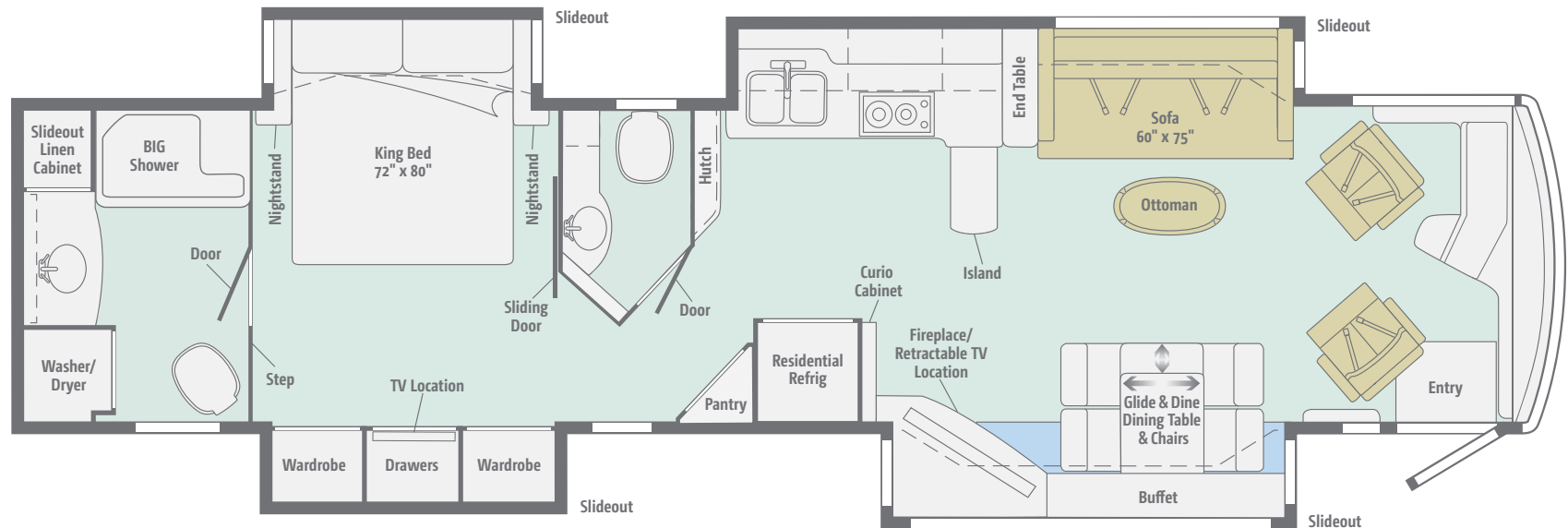
chassis, we set a new standard for handling, ride and performance in diesel chassis design.

But performance doesn’t mean sacrificing storage. The innovative lowered-rail design of the Maxum Chassis opens up a cavernous basement storage compartment, offering up to 196 cubic feet of storage.



## NEW 42HL

This quad-slide floorplan pulls out all the stops with its Glide & Dine dining table/buffet with an expansive picture window view, powered skylight in the front lounge, mid-coach galley with stationary island, and a spacious bedroom with his and hers wardrobes and a powered king bed.

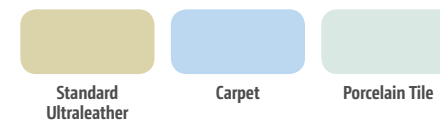
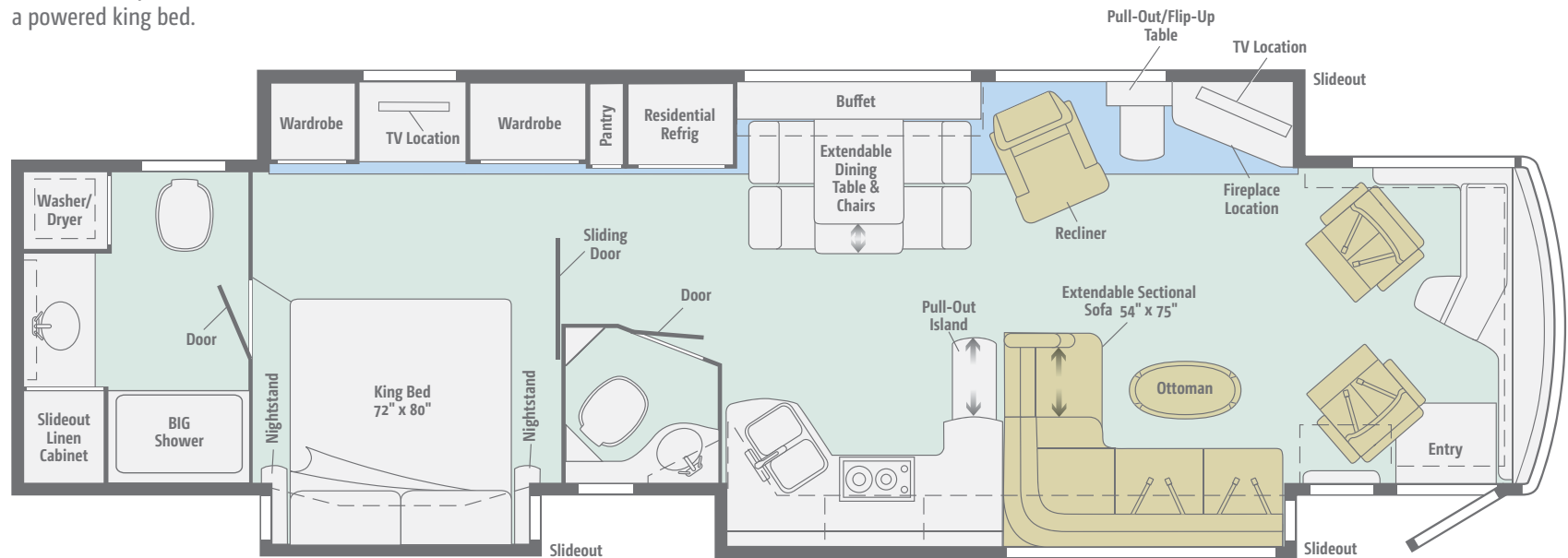


Dimensions shown are for sleeping space only and may vary due to styling differences. Dashed lines denote overhead storage areas. Floorplans and specifications are also available online at [WinnebagoInd.com](http://WinnebagoInd.com).



## NEW 42QL

This spacious floorplan with its full-wall slideout features an Extendable Sectional Sofa, electric fireplace, quality galley with a pull-out island, and a luxurious bedroom complete with his and hers wardrobes and a powered king bed.

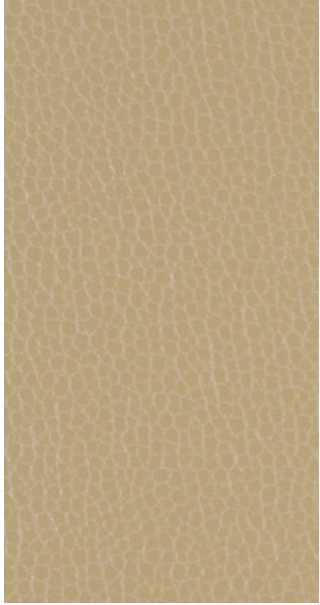


Dimensions shown are for sleeping space only and may vary due to styling differences. Dashed lines denote overhead storage areas. Floorplans and specifications are also available online at [WinnebagoInd.com](http://WinnebagoInd.com).



Choose from three fabric collections and three wood finishes.

## Park Avenue



Ultraleather



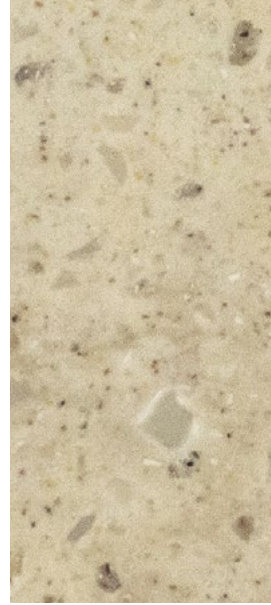
Leatherette Accent



Accent



Bedsread



Corian Countertop



Wall Board



Porcelain Tile



Shower Stall



Porcelain Tile Accent



Glazed Java



Glazed Honey Cherry



Glazed Vienna Maple

*Winnebago reserves the right to change décor materials and specifications without notice or obligation.*



Choose from three fabric collections and three wood finishes.

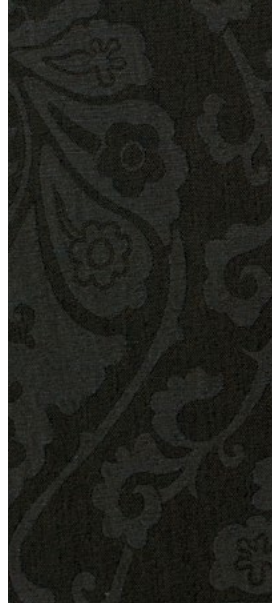
## Godiva



Ultraleather



Leatherette Accent



Accent



Bedspread



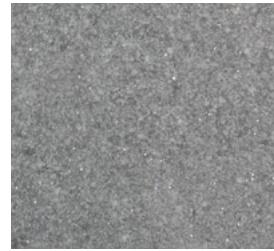
Corian Countertop



Wall Board



Porcelain Tile



Shower Stall



Porcelain Tile Accent



Glazed Java



Glazed Honey Cherry



Glazed Vienna Maple

*Winnebago reserves the right to change décor materials and specifications without notice or obligation.*



Choose from three fabric collections and three wood finishes.

## Passages



Ultraleather



Leatherette Accent



Accent



Bedspread



Corian Countertop



Wall Board



Porcelain Tile



Shower Stall



Porcelain Tile Accent



Glazed Java



Glazed Honey Cherry



Glazed Vienna Maple

*Winnebago reserves the right to change décor materials and specifications without notice or obligation.*



# Grand Tour Paint

**WINNEBAGO**<sup>IND</sup>

Stylize your Grand Tour with one of four exceptional full-body paint options or two available premium full-body paint packages featuring a premier clearcoat automotive finish.



**Apricot Ice**  
FULL-BODY PAINT



**Sunray**  
FULL-BODY PAINT

# Grand Tour Paint

**WINNEBAGO**<sup>IND</sup>

Stylize your Grand Tour with one of four exceptional full-body paint options or two available premium full-body paint packages featuring a premier clearcoat automotive finish.



**Lauderdale**  
FULL-BODY PAINT



**Bordeaux**  
FULL-BODY PAINT



# Grand Tour Paint



Stylize your Grand Tour with one of four exceptional full-body paint options or two available premium full-body paint packages featuring a premier clearcoat automotive finish.



**Solar Frost**  
FULL-BODY PAINT  
(Available Premium Paint Package)



**Solar Winds**  
FULL-BODY PAINT  
(Available Premium Paint Package)

## Weights & Measures

	42HL	42QL
Length	42'10"	42'10"
Exterior Height <sup>1</sup>	12'10"	12'10"
Exterior Width <sup>2</sup>	8'5.5"	8'5.5"
Exterior Storage <sup>3</sup> (cu. ft.)	196	196
Awning Length	16'/19'	16'/19'
Interior Height	7'	7'
Interior Width	8'0.5"	8'0.5"
Freshwater Tank Capacity <sup>4</sup> (gal.)	85	85
Water Heater Capacity (gal.)	Continuous	Continuous
Holding Tank Capacity - Black/Gray <sup>4</sup> (gal.)	51/95	51/71
LP Capacity <sup>5</sup> (gal.)	5.6	5.6
Fuel Capacity (gal.)	150	150
GCWR <sup>6</sup> (lbs.)	60,660	60,660
GVWR (lbs.)	45,660	45,660
GAWR - Front (lbs.)	15,660	15,660
GAWR - Rear (lbs.)	30,000	30,000
Wheelbase	279" + tag	279" + tag

## Maxum Chassis®

Cummins® ISL 8.9L 450-hp turbo-charged diesel engine

Adjustable brake and accelerator pedals

Allison® 3000 MH 6-speed electronic transmission w/3-stage (low, medium, high) + off engine compression brake

Information display center

ZF™ Independent Front Air Suspension, NeWay® rear air suspension

160-amp. alternator

Air brakes w/ABS

Quick-connect air accessory

HWH automatic hydraulic leveling jacks w/3-position controls

Tow power package w/7-pin trailer wiring and I.P. wiring

Trailer Hitch<sup>6</sup> 15,000-lb. drawbar/1,500-lb. maximum vertical tongue weight

Stylized aluminum wheels

## Cab Conveniences

**Villa luxury cab seats** driver and queen passenger seat w/6-way power, power footrests, heat and massage, remote swivel, power lumbar support, manual recline, adjustable armrests

### 3-point seat belts

### Infotainment Center with Rand McNally RV GPS

10.4" touch screen color monitor w/split screen function, 2nd monitor, Rand McNally RV GPS safe & easy routing, amenities & tools, trips & content, turn-by-turn voice guidance, AM/FM radio w/CD/DVD player, steering wheel and handheld remote, SiriusXM™ (subscription not included), compass, outside temperature, Bluetooth™ color rearview camera, sideview camera display, and w/house mode feature

### Video camera system

**Tilt/telescoping SmartWheel™ steering wheel w/infinite adjustable column**

### Cruise control

**Powered entrance and storage door locks w/remote keyless entry**

**Powered adjustable mirrors w/defrost, sideview camera and turn signal**

### 12-volt powerpoints

### Powered stepwell cover

### 2-speed built-in defroster fans

**MCD powered solar/blackout roller shades** (windshield)

**MCD manual solar/powered blackout roller shades** (driver/passenger windows)

### Chassis/house battery radio power switch

### Dual map lights

### Sirius satellite radio

### Mobile collision avoidance

## Interior

**Electric fireplace** adjustable thermostat and flame, handheld remote, electric timer w/automatic shut-off

### 46" HDTV (42QL)

### 50" HDTV (42HL)

**Blu-ray™ Home Theater** w/soundbar and subwoofer

**Dirt Devil® central vacuum cleaner w/VacPan®**

### Security safe

**HDMI 4x4 Matrix central video selection system**

**Satellite system ready** (front and bedroom)

### OnePlace® systems center

### Skylight w/powered shade and remote

**Contour™ windows** tinted, dual-glazed, thermo-insulated

### Soft vinyl ceiling

**Powered ventilator fan** (galley)

**Powered roof vent** (bath(s))

**MCD manual solar/powered blackout roller shades** (lounge, dinette, bedroom)

**MCD manual solar/blackout roller shades** (bath)

### LED ceiling lights

**Accent lights** above front overhead cabinets and ceiling trim panels

### Jack® digital TV amplified antenna system

### Stackable washer/dryer

**Multi-plex wall switches** w/dimming feature

## OPTIONAL EQUIPMENT

Winegard® Trav'ler® automatic multi-satellite antenna

Winegard Mission® in-motion TV antenna system

47" HDTV (42QL)

Bose® Premium System (living area to bedroom)

## Galley

**Corian®** countertops, decorative backsplash, and sink covers

**Stainless steel microwave/convection oven** w/exterior vented range fan and touch control

**Stainless steel drawer-style dishwasher**

**2-burner induction range top** w/rapid cooling ceramic glass top and electronic controls

**Residential stainless steel French door refrigerator** freezer drawer, water and ice dispenser

**Cold water filtration system**

## OPTIONAL EQUIPMENT

**Stainless steel microwave/speedcook oven** w/exterior vented range fan



## Bath

Corian® countertop w/decorative backsplash  
Flexible showerhead  
Textured glass shower door  
Skylight  
Porcelain toilet  
Area rug (master bath)

## Bedroom

29" HDTV (42QL)  
32" HDTV (42HL)  
Ceiling fan  
Powered king bed w/Ideal Rest® Natural Reserve digital comfort control mattress and remote controls

Bedsread, pillows, and shams  
Headboard

### OPTIONAL EQUIPMENT

Interior Upgrade Package 5 bedroom pillows

## Exterior

Exterior Entertainment Center 42" HDTV w/extendable/pivot mounting bracket, home theater soundbar system, and subwoofer  
Auxiliary docking lamps

Driver and passenger-side service bay lights

90" x 54" slideout storage compartment tray (extends out either side of the coach)

Pull-Out Tailgate Package single-burner induction range top, steel counter, refrigerator/freezer, bottle opener, garbage bag holder, paper towel holder, cold water access port, flexible water spout w/shut off, 15' coil water hose, LED light fixture, 110-volt/AC receptacle, large storage area

2 powered multi-stage, armless, acrylic patio awnings w/motion sensors w/LED lights

Powered acrylic entrance awning  
Acrylic window awnings  
KeyOne™ lock system  
Lighted assist handle w/keyless entry keypad  
Lighted storage compartments  
Storage containers w/lids  
7' folding stepladder  
Porch and stepwell lights  
Automatic entrance steps  
Lower front protective mask  
Premier clearcoat automotive finish  
Rear mud flaps  
Full-width rear mudguard

### OPTIONAL EQUIPMENT

Polished stainless steel on lower valance doors and panels

## Heating & Cooling System

TrueAir® Maximum Comfort A/C 3-13,500 BTU low-profile roof air conditioners w/2 heat pumps and 3 condensation pumps

Aqua-Hot® 450 hydronic dual-zone heating system w/continuous hot water and engine pre-heat

Triple-zone thermostat

## Electrical System

Service Center 120-volt AC power, cable input, portable satellite dish hook-up, QuickPort® service connection hatch, multi-plex switch panel

100-watt solar panel battery charger

PowerLine® Energy Management System

Auxiliary start circuit

50-amp. power cord w/power cord reel

2,800-watt AC/DC inverter/converter/charger w/remote panel

10,000-watt Cummins Onan® Quiet Diesel™ generator

Powered generator slideout mechanism

AC/DC electrical distribution system

6 maintenance-free AGM deep cycle Marine/RV sealed coach batteries

Battery disconnect system (coach and chassis)

Automatic dual-battery charge control

Surge Guard® shoreline/generator automatic changeover switch w/surge protection

Chassis battery charger/maintainer

Automatic generator start system

## Plumbing System

Service Center multi-plex monitor panel, pressurized city water hook-up w/diverter fill, drainage valves, exterior wash station, glove holder, holding tank flushing system, paper towel holder, 20' sewer hose w/QuickConnect® QuickPort service connection hatch, soap dispenser

Water supply hose w/reel

TrueLevel™ holding tank monitoring system

Full coach water filtration system

Portable LP tank w/gauge and LPG accessory connection (patio area)

On-demand water pump

Winterization Package water heater bypass valve and siphon tube

Heated holding tank compartments

## Safety

LP, smoke, and carbon monoxide detectors

10 BC fire extinguisher

Ground fault interrupter

Daytime running lamps

Fog lamps

High-mount brake lamps

## Warranty<sup>7</sup>

12-month/15,000-mile basic limited warranty<sup>8</sup>

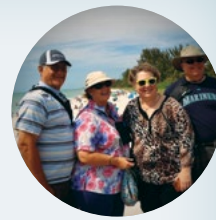
36-month/36,000-mile limited warranty on structure<sup>8</sup>

10-year limited parts-and-labor warranty on roof skin<sup>8</sup>

### FOOTNOTES

- 1 The height of each model is measured to the top of the tallest standard feature and is based on the curb weight of a typically equipped unit. The actual height of your vehicle may vary by several inches depending on chassis or equipment variations. Please contact your dealer for further information.
- 2 Floorplans feature a wide-body design - over 96." In making your purchase decision, you should be aware that some states restrict access on some or all state roads to 96" in body width. Before making your purchase decision, you should confirm the road usage laws in the states of interest to you.
- 3 The load capacity of your motorhome is designated by weight, not by volume, so you cannot necessarily use all available space when loading your motorhome.
- 4 Capacities are based on measurements prior to tank installation. Slight capacity variations can result due to installation applications.
- 5 Capacities shown are tank manufacturer's listed water capacity (W.C.). Actual filled LP capacity is 80% of listing due to overfilling prevention device on tank.
- 6 Actual towing capacity is dependent on your particular loading and towing circumstances which includes the GVWR, GAWR, and GCWR, as well as adequate trailer brakes. Please refer to the Operator's Manual of your vehicle for further towing information.
- 7 See separate chassis warranty.
- 8 See your dealer for complete warranty information.

Winnebago's continuing program of product improvement makes specifications, equipment, model availability, and prices subject to change without notice. Published content reflects the most current product information at time of printing. Please consult your dealer for individual vehicle features and specifications.



Let us host your next

# Adventure

Over 20 Tours in 2015



WGOAdventures.com



Show your Winnebago love with high-quality gifts and wearables.



Apparel | Gifts | Parts | Gear

WinnebagoOutdoor.com

Find your style



Connect with Winnebago (Click one of the following)



Like us



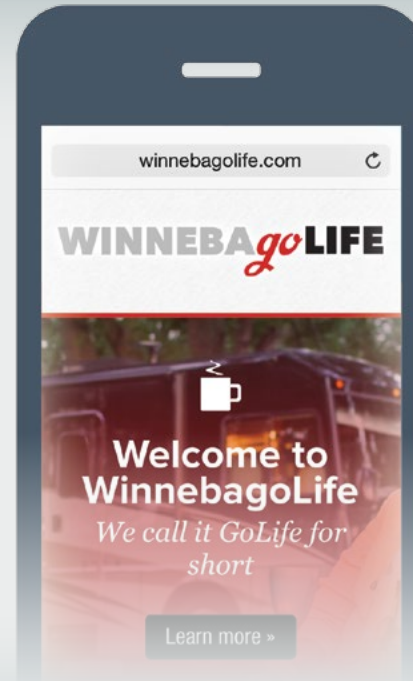
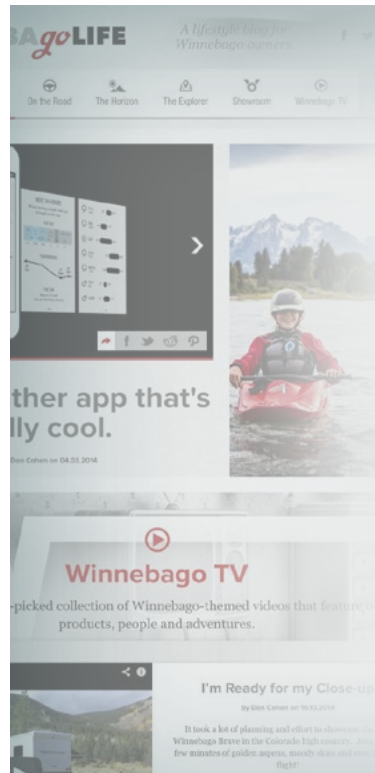
Follow us



Watch now

## WinnebagoInd.com Has All The Answers

Visit WinnebagoInd.com on your computer, smartphone, or tablet for the latest product information and updates.



## Welcome to GoLife!

Visit our lifestyle blog for motorhome news, personal travelogues, and community stories.

WinnebagoLife.com





mywinnebago.com

LOOKING BACK  
TELL YOUR STORY  
JOIN THE CREW

WINNEBAGO  
FOREST CITY, IOWA

SEE HOW FAR WE'VE COME  
TRUCK & HOME  
TRUCK FROM THE STORE

WINNEBAGO HAS A  
**STORY**  
AND WHAT A STORY IT IS!

**Looking Back**

**Tell us your story**

**Join the Crew**

Write your story, read all stories, show your pride.

# PREFERRED CARE PROGRAM

We back our motorhomes with best-in-class support both before and after the sale:

- 12-month/15,000-mile basic limited warranty
- 36-month/36,000-mile limited warranty on structure
- 10-year limited parts-and-labor warranty on roof skin
- Complimentary 24-hour roadside assistance program

**TRIPSAVER FAST TRACK PARTS WINNEBAGO**

**WINNEBAGO ROADSIDE ASSISTANCE**

For more information, visit us at [WGOService.com](http://WGOService.com)

**WINNEBAGO RV INSURANCE**

From RV to personal insurance, Winnebago RV Insurance can provide all the coverage and services you need to feel at home on the road.

**Call us at: (800) 642-4892**

**See How Far We've Come**  
MOVE THE SLIDER TO SEE THE EVOLUTION

**Then & Now**

**Ads from the Archives**

**VISIT: MyWinnebagoStory.com**

## WIT CLUB

**Join the Club, Join the Fun**

Here's the perfect way to begin your life on the road as the owner of a new Winnebago – by joining the exclusive WIT Club. Start your adventure with other fun-loving WIT Club members from across the country and get the most out of your new Winnebago motorhome.

**Members enjoy:**

- Caravans and rallies
- Newsletters
- Local and state group activities
- RV travel benefits

See more at [WITclub.com](http://WITclub.com)

**WIT CLUB "DOWN UNDER"**

**Grand National Rally**

G'day mates! Explore the outback at this year's "Down Under" Grand National Rally. Each year, thousands of Winnebago owners descend upon the land down under – a.k.a. Forest City, Iowa.

Rally-goers enjoy an unforgettable week reconnecting with friends, taking tours, participating in activities, and more. Hop on down and join the adventure this July!

©2015 Winnebago  
Seat belts are your most important hookup. Always buckle up.