



IT'S YOUR TURN. CREATE YOUR OWN MEMORIES.



It's your turn.

CREATE YOUR OWN MEMORIES.







SALEM 27DBUD

FAMILY FRIENDLY TOWABLE UNIT

INTERIOR SHOWN IN MEADOW

TOWABLE COMFORT FOR YOUR FAMILY

Salem provides spacious, convenient floorplans, even when you need light weight towability for any size family!

PREMIUM STANDARDS. Enjoy total privacy with the spin-around entertainment center and solid wood doors among many other amenities.



Hey Mom and Dad! So, it's our first camping adventure in our new 27DBUD. Debbie and Suzy really loved it! We hiked and fished and I don't think they slept the whole time! You wouldn't believe the power options on this trailer! Made life easy, and the glow of the LED awning light at night was really nice. Love you and see you soon!

Bill and Jamie





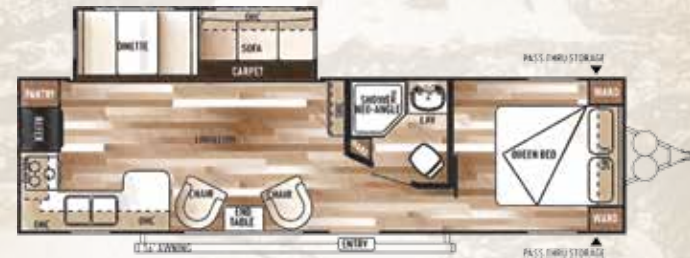
SALEM
27RKSS

OUR MOST POPULAR SINGLE BEDROOM UNIT

INTERIOR SHOWN IN
MINERAL

TOTAL COMFORT

Relax in style with a unit that is perfect for either travel or seasonal settings. Massive picture windows, seemingly endless countertop space, and additional features that include maximized storage, full extension drawer guides, and extra-large pass through doors make this one of the most requested models in the market.



Dear kids, you won't believe the adventures your father and I have been on recently. Our new 27RKSS has been perfect for us two. Sounds like you are really enjoying your new trailer! Have fun, and can't wait to share with you when we return.

Love, Mom and Dad





SALEM
31KQBTS
SPACIOUS FAMILY UNIT

INTERIOR SHOWN IN
LEATHER

**VERSATILE FLOORPLANS FOR ANY
SIZE FAMILY**

Whether you are looking for a small, two-person unit, special needs for large scale entertaining, or anything in between, Salem has the right unit for you.



Hey everyone! So the kids brought all their friends on this camping trip! When we pulled in, it was just pouring rain. No problem though. We just used our optional remote control in the truck, put the slides out and jacks down, and just ran inside without getting wet! Anyway, the kids had a blast in their own personal room in the 31KQBTS! It was a great family experience. Chat with you soon!

Uncle Mike



Shown with Customer-Supplied TV



80"
CEILING
HEIGHT

A

K

J

B

C

L

H

M

I

D

E

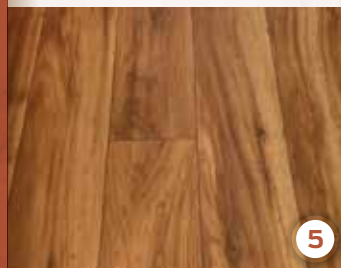
G

F

8

SALEM INTERIOR FEATURES

- A.** 16x 24 Residential Style Cabinets with Glass Inserts and Base Shelves (Where applicable)
- B.** Solid Surface Countertops
- C.** Stainless Steel Appliance Package
- D.** True Hardwood Table Top
- E.** Extra-deep Pot and Pan Drawer
- F.** Armstrong® linoleum - Scratch, Tear, and Cold-Resistant Flooring.
- G.** Full Extension, Extra-wide Pull Out Drawer
- H.** Decorative Overhead Dining Light
- I.** Night Shades
- J.** High Rise Faucet and 60/40 Sink
- K.** 80" Ceiling Height
- L.** New Dhalia Cherry Mouldings and Accents Throughout
- M.** Decorative Curtain Rods and Curtains



- 1. Solid Surface Countertops
- 2. Hinged 1/2 Barrel Storage (Most Models)
- 3. High Rise Faucet and 60/40 Sink
- 4. Extra Large Pass-Through Storage

- 5. Armstrong® One Piece Plank Wood Linoleum Flooring
- 6. Full Extension Ball Bearing Drawer Guides
- 7. FM Radio, DVD Player w/ MP3 Hookup

- 8. Copper Vein Weatherproof Countertop on Outside Kitchen (Outside Kitchen Models Only)
- 9. Swivel Entertainment Center with Solid Doors to Bedroom
- 10. 16 x 24 Residential Style Cabinets with Glass Inserts and Base Shelves (Where applicable)

- 11. Hardwood Booth Table
- 12. Shoe Nook
- 13. Aerodynamic Front Profile (N/A 29FKBS)

CONSTRUCTION BUILT TO LAST.

- 1 Radius entry Steps
- 2 2" x 3" floor joists 12" on center
- 3 5/8" 5-ply tongue in groove plywood floor decking
- 4 2" wall studs 16" or less on center
- 5 30" fiberglass radius entry door
- 6 .024 aluminum siding
- 7 5" bowed truss roof rafters
- 8 One piece seamless roof (12 yr. warranty)
- 9 R-7 fiberglass insulation throughout
- 10 Extra large full pass-thru storage
- 11 Smooth rolled skirting
- 12 In floor ducted heat
- 13 Diamond plate rockguard
- 14 3/8" roof decking (full walk-on roof)
- 15 LP bottle cover w/ easy access
- 16 13.5K ducted roof, high output AC w/ quick cool
- 17 Stain resistant carpet
- 18 One piece plank wood linoleum flooring
- 19 Safety glass windows
- 20 Hitch Light
- 21 Aluminum radius front corners



FUNCTIONAL, QUALITY STANDARDS

At Salem your satisfaction is serious business and it shows. Our commitment to your satisfaction includes:

A: Extra large pass-thru storage

B: Heated and enclosed fresh water tank

C: Salem 5/8" Tongue and groove plywood (top) vs. OSB (below)

D: 6 gallon GE DSI water heater with Quick Recovery

E: Central Switch Command Center (Most Floorplans)

Salem Standards & Options

CONSTRUCTION & EXTERIOR

Full walk on one-piece Superflex® roof w/
12 year warranty
Extra large full pass through storage
(per floorplan)
Cold crack and mildew resistant vinyl patio
awning
Safety glass windows
Steel framed 30" smooth radius fiberglass
main entry door
Powder coated I-beam frame
Cambered chassis
Enclosed fresh water tank in a heated
compartment
16-gal. per hour GE quick recovery DSI
water heater
Water heater by-pass
Nitrogen filled tires
2" wall construction 16" (or less) on center
R-7 fiberglass insulation throughout
13 ply cross micro-laminated beam header
above slide outs
Triple seal slide outs
Electric slide out systems (flush floor)
Swing arm entry assist handle
Two marine grade exterior speakers
Electric front jacks (fifth wheels)
Fiberglass front cap (fifth wheels)

KITCHEN

Dometic® double door refrigerator
(2 yr. warranty)
High rise faucet
Deep basin 60/40 residential style sink
Microwave w/ carousel
3-Burner, high output range with oven
(2 yr. warranty)

Range hood w/ 12-volt exhaust fan and light
One piece plank wood linoleum flooring
Solid wood drawers
Knife rack (behind cook top)
Large overhead cabinets w/ glass inserts
Central switch command center
Nickel finished hardware
Full extension ball bearing drawer guides
Abundant cabinet storage
Hinged 1/2 barrel storage (Some models)

LIVING ROOM

80" interior height travel trailers
(101" fifth wheel models)
Ducted 13,500 BTU high output
roof air conditioner w/ quick cool
Huge storage drawer at sofa base (select models)
Extra large booth dinette w/ large drawer
(most models)
Large dinette picture window
Digital TV antenna and booster
Cable TV/ satellite hook-up
Standard FM stereo w/ DVD
and four cube speakers
Patio door w/ vertical blinds
(36BHBS, 37BHSS2Q, 38RLT)
Decorative wall light
25K BTU suburban forced air DSI furnace
w/ digital thermostat (2 yr. warranty)
In-floor ducted heat

BEDROOM

Evergreen mattress
Plush comforter and headboard
Strut lifted storage area under bed
Bedside mirrored wardrobes w/ shelf
Bedside 110-volt power outlets (2)

Solid bedroom privacy doors (most models)
Storage shelf above bed

BATHROOM

12-volt power bath roof exhaust vent
Wooden medicine cabinet w/ mirrored door
Foot flush toilet
Tooth brush holder and towel ring
Vinyl tub surround
Frosted glass barrel shower with tub surround
(27RLSS, 27RKSS, 29RKSS 29FKBS, 31BKIS,
36BHBS, 37BHSS2Q, 38RLT)

SECURITY AND SAFETY

LED docking lights (fifth wheels)
LP leak detector
Smoke detector
Carbon monoxide detector
Fire extinguisher
Hitch light (travel trailers)
Welded heavy duty safety chains (travel trailers)
Electric brakes (all wheels)
GFI receptacles
ANSI 119.2 certified
Meets all national highway administration
specifications

SALEM OPTIONS

Stabilizer jacks [travel trailer (4) or fifth wheel (2)]
Skylight over tub
30-lb LP bottles w/ cover and auto change over
(travel trailers)

Contact your Salem dealer for a complete list of options.

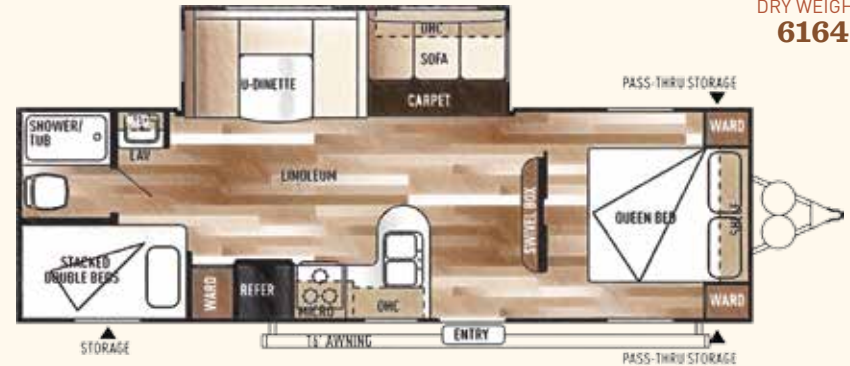
T26TBUD

DRY WEIGHT:
5790



T27DBUD

DRY WEIGHT:
6164



T28RLDS

DRY WEIGHT:
6782



T29FKBS

DRY WEIGHT:
7513



Salem Travel Trailers

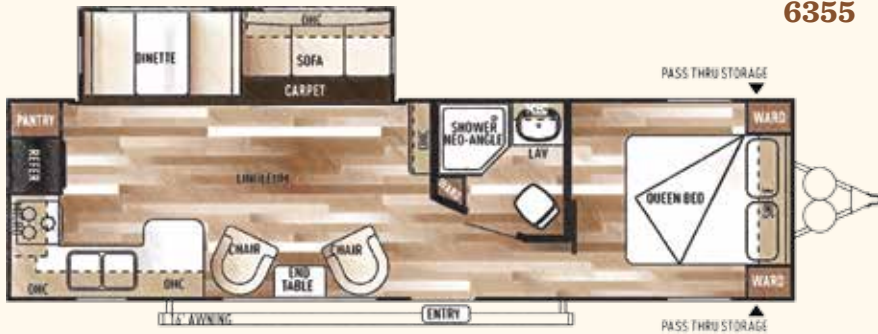
| | T26TBUD | T27DBUD | T27RKSS | T27RLSS | T28RLDS | T29FKBS | T29QBDs | T29UD3 | T30KQBSS | T30QBSS |
|--------------------------------|---------|---------|---------|---------|---------|---------|---------|--------|----------|---------|
| HITCH WEIGHT (LBS.) | 815 | 772 | 720 | 650 | 882 | 826 | 899 | 956 | 793 | 980 |
| DRY SHIP WEIGHT (LBS.) | 5790 | 6164 | 6355 | 6372 | 6782 | 7513 | 6918 | 7559 | 7902 | 6575 |
| CARGO CARRYING CAPACITY (LBS.) | 1987 | 1549 | 1327 | 1240 | 1062 | 3414 | 2722 | 3519 | 3013 | 3146 |
| EXTERIOR LENGTH | 29' 0" | 29' 6" | 33' 3" | 32' 2" | 32' 3" | 35' 3" | 34' 0" | 36' 5" | 36' 1" | 33' 2" |
| EXTERIOR HEIGHT | 11' 2" | 11' 2" | 11' 2" | 11' 2" | 11' 2" | 11' 2" | 11' 2" | 11' 2" | 11' 2" | 11' 2" |
| FRESH WATER CAPACITY (GAL.) | 40 | 40 | 40 | 40 | 40 | 40 | 40 | 40 | 40 | 40 |
| BLACK WATER CAPACITY (GAL.) | 32 | 32 | 32 | 35 | 27 | 27 | 27 | 32 | 34 | 27 |
| GREY WATER CAPACITY (GAL.) | 34 | 34 | 69 | 69 | 69 | 69 | 30 | 32 | 68 | 30 |
| AWNING (FT.) | 16' | 16' | 16' | 16' | 16' | 18' | 18' | 18' | 18' | 18' |

FLOORPLAN KEY

| | |
|-------|------------------|
| OHC | OVERHEAD CABINET |
| WARD | WARDROBE |
| MICRO | MICROWAVE |
| LAV | BATHROOM SINK |
| MED | MEDICINE CABINET |

T27RKSS

DRY WEIGHT:
6355



T27RLSS

DRY WEIGHT:
6372



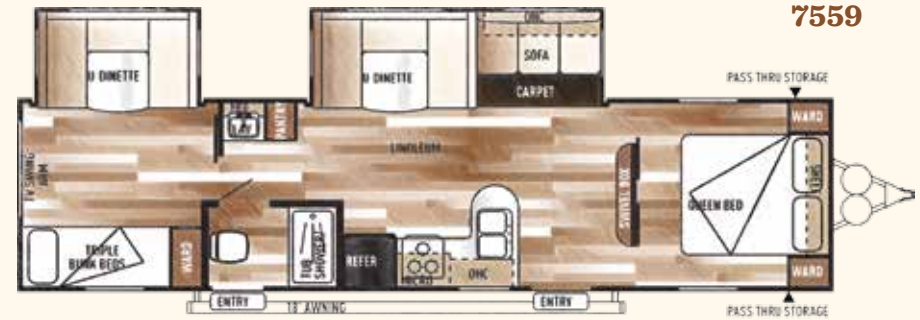
T29QBD5

DRY WEIGHT:
6918



T29UD3

DRY WEIGHT:
7559



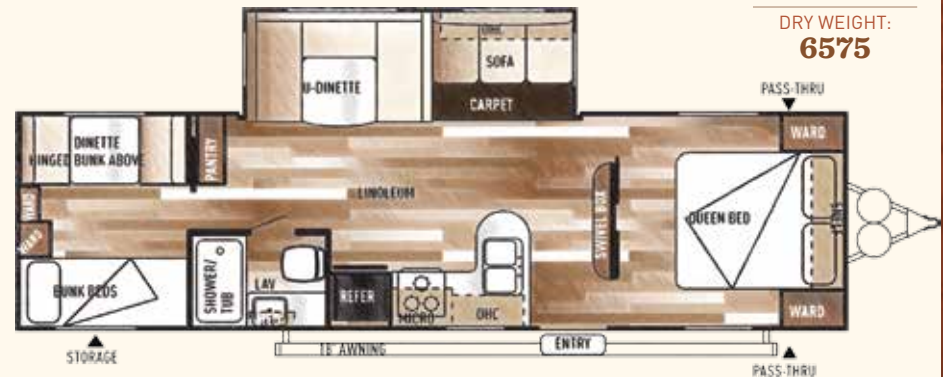
T30KQBSS

DRY WEIGHT:
7902



T30QBSS

DRY WEIGHT:
6575





T31BKIS

DRY WEIGHT:
8350



T31KQBSTS

DRY WEIGHT:
7902



T31QBSTS

DRY WEIGHT:
8140



T32BHDS

DRY WEIGHT:
7955

Salem Travel Trailers

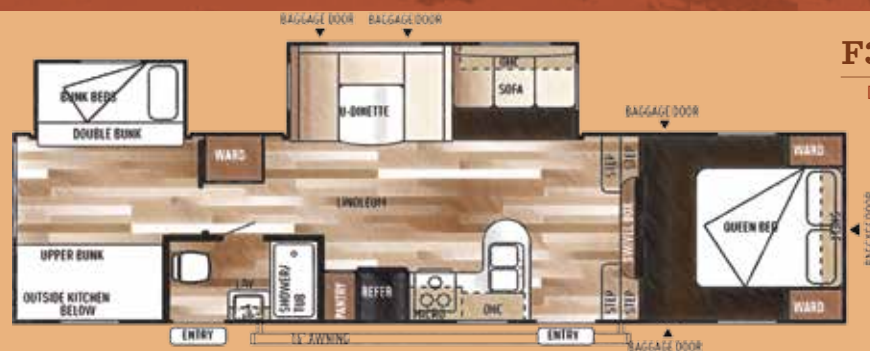
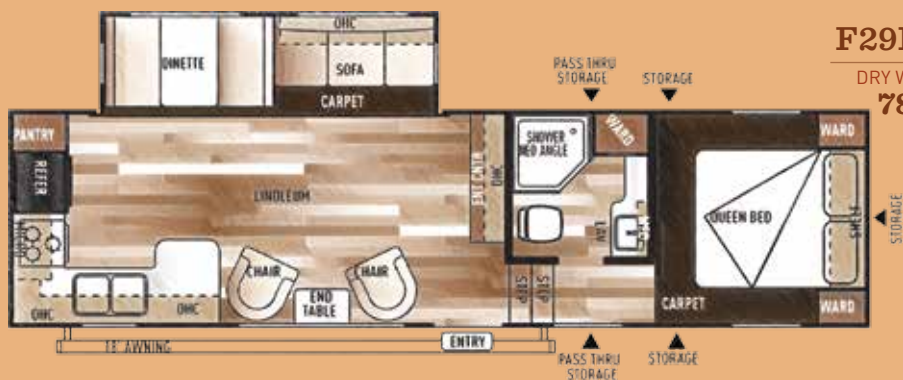
| | T31BKIS | T31KQBSTS | T31QBSTS | T32BHDS | T36BHBS | T37BHSS2Q | 38RLT |
|--------------------------------|---------|-----------|----------|---------|---------|-----------|-------|
| HITCH WEIGHT (LBS.) | 970 | 793 | 885 | 859 | 720 | 970 | 1030 |
| DRY SHIP WEIGHT (LBS.) | 8350 | 7902 | 8140 | 7955 | 7892 | 7600 | 8588 |
| CARGO CARRYING CAPACITY (LBS.) | 2742 | 3013 | 2846 | 3026 | 2929 | 3492 | 2543 |
| EXTERIOR LENGTH | 35'8" | 36'1" | 35'6" | 35'8" | 36'7" | 36'1" | 38'5" |
| EXTERIOR HEIGHT | 11'2" | 11'2" | 11'2" | 11'2" | 11'2" | 11'2" | 11'2" |
| FRESH WATER CAPACITY (GAL.) | 40 | 40 | 40 | 40 | 40 | 40 | 39 |
| BLACK WATER CAPACITY (GAL.) | 32 | 34 | 34 | 32 | 27 | 27 | 29 |
| GREY WATER CAPACITY (GAL.) | 64 | 68 | 35 | 66 | 30 | 30 | 29 |
| AWNING SIZE (FT.) | 13' | 18' | 18' | 18' | 18' | 18' | 13' |

Fifth Wheels

| | 26DDSS | 29RKSS | 29RLW | 33BHOK |
|--|--------|--------|-------|--------|
| | 1272 | 1418 | 1441 | 1704 |
| | 7103 | 7831 | 7394 | 9107 |
| | 2931 | 3709 | 4169 | 2719 |
| | 30'9" | 34'1" | 31'8" | 37'9" |
| | 12'3" | 12'3" | 12'3" | 12'9" |
| | 40 | 40 | 40 | 40 |
| | 34 | 27 | 32 | 32 |
| | 32 | 62 | 32 | 66 |
| | 16' | 18' | 18' | 16' |

FLOORPLAN KEY

| | |
|--------------|--------------------------|
| OHC | OVERHEAD CABINET |
| WARD | WARDROBE |
| MICRO | MICROWAVE |
| LAV | BATHROOM SINK |
| MED | MEDICINE CABINET |
| | TRAVEL TRAILER FLOORPLAN |
| | FIFTH WHEEL FLOORPLAN |



The Salem Line-Up



SALEM CRUISE LITE



SALEM



SALEM VILLA | VILLA ESTATE



SALEM HEMISPHERE

FREE MEMBERSHIP
to Forest River Owners' Group

www.forestriverfrog.com



Learn More
Scan this barcode using
a QR Reader on your
smart phone to learn
more about Forest River.



A Berkshire Hathaway company.

Forest River, Inc. 55470 C.R. 1 Elkhart, IN 46515 | (574) 533-5934
www.forestriverinc.com/Salem | www.forestriveraccessories.com

All illustrations and specifications contained in this literature are based on the latest product information at time of publication. Forest River reserves the right to make changes in prices, colors, materials, equipment and specifications at anytime without notice and assumes no responsibility for any error in this literature. All trailers are shipped F.O.B. Goshen, Indiana. CONSULT YOUR LOCAL DEALER FOR WARRANTY INFORMATION. LITHO: U.S.A. FOR 1083 P & W: 2013.12.10

24/7 EMERGENCY ROADSIDE ASSISTANCE

For a worry-free ownership experience Forest River includes one year of Coach-Net RV Technical & Roadside Assistance with each RV purchase. Whether new to the RV lifestyle or an experienced RV enthusiast, Forest River owners have 24/7 access to technical, operational and emergency road service coverage throughout the US & Canada. Coach-Net's fast, dependable service is just a phone call away.

Coach-Net®

RV Technical & Roadside Assistance



Forest River, Inc. encourages our customers to purchase their Forest River products from a local dealership whenever possible for the following reasons:

- 1) Forest River, Inc. dealers are independently owned and operated businesses so priority service and scheduling is at their discretion and is often provided to customers that purchased their unit at that dealership.
- 2) Purchasing locally allows customers to establish meaningful relationships with a dealer, enhancing the RV experience through assistance with product questions, user tips or RV regulations for your state or country, and much more!
- 3) Canadian customers must meet requirements to bring an RV purchased out of the country to their home. These requirements may involve additional inspections and certifications, taxes and fees. Your local Canadian Dealer is a professional at meeting these requirements.
- 4) Scheduling timely warranty repairs and adjustments through a local dealership provides far greater flexibility and convenience to you, the customer!

It is the goal of Forest River, Inc. that all of our RV owners fully enjoy the RV experience and that customer satisfaction meets or exceeds their expectations!



PRE-DELIVERY INSPECTION FACILITY

20,000 square feet of quality assurance. The bare essentials for a premium product. This state-of-the-art facility gives immediate daily feedback to production for quality assurance in every unit built.

SALEM

NORTHWEST
TRAVEL TRAILERS

LIVE. LAUGH. CAMP!

SALEM





26TBUD

CARAMEL DECOR



BETTER TOWABILITY

The innovative design of the Salem reduces wind resistance which gives you better mileage and a smoother ride.





Salem Travel Trailers

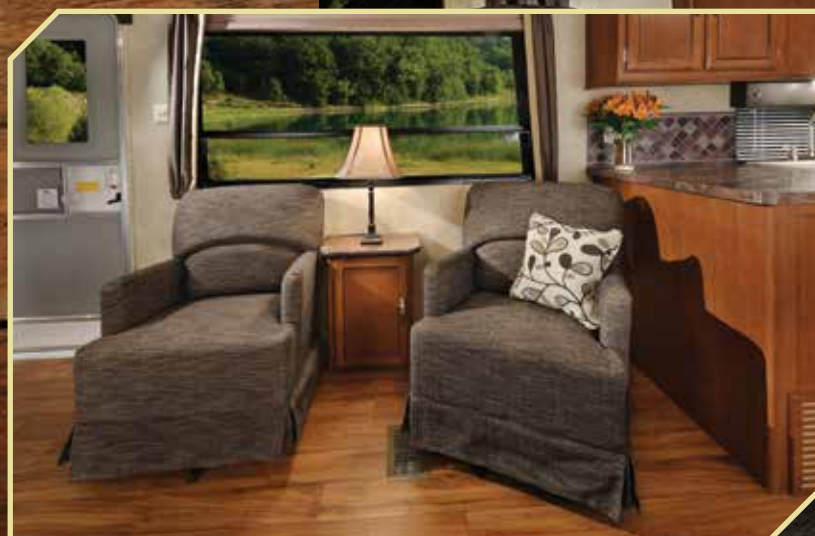
YEARS OF MEMORIES is the expectation in a Salem RV. We understand that a FAMILY may come in many different sizes, which is why we offer FUNCTIONAL FLOORPLANS to meet your needs! With 80" interior heights, deep slides, and U-Shaped dinettes (most models), Salem values the meaning of FAMILY ROOM! Find a spot for all the necessities of camping with the overwhelming amount of storage throughout your Salem RV! Many of our employees have spent time camping, so we know what it takes to build an RV with **THE THINGS THAT MATTER!**



(SHOWN WITH OPTIONAL TV)

LIVE.
LAUGH.
CAMP!

27RKSS
MINERAL DECOR





SALEM
NORTHWEST



(SHOWN WITH OPTIONAL TV)

32BHDS MINERAL DECOR

Salem Interior Features

- | | | |
|---|--|--|
| A. OVERHEAD CABINET 14" DEEP FOR LARGE PLATES | F. FM RADIO, CD PLAYER W/ MP3 HOOKUP | L. ONE PIECE PLANK WOOD |
| B. HUGE STORAGE DRAWER AT BASE OF DINETTE | G. DECORATIVE OVERHEAD DINING LIGHT | LINOLEUM FLOORING |
| C. 80" INTERIOR HEIGHT | H. HINGED 1/2 BARREL STORAGE (MOST MODELS) | M. RESIDENTIAL STYLE CARPET |
| D. (4) CUBE SPEAKER SOUND SYSTEM | I. HIGH RISE FAUCET AND 60/40 SINK | N. SWIVEL ENTERTAINMENT |
| E. HIGH DEFINITION COUNTERTOPS | J. DECORATIVE CURTAIN RODS | O. FULL EXTENSION BALL BEARING DRAWER GUIDES |
| | K. 3-BURNER RANGE WITH OVEN AND VENT HOOD | P. SHOE NOOK |

Salem Interior/Exterior Features



HIGH RISE FAUCET AND
60/40 SINK



EXTRA LARGE PASS-THRU
STORAGE



HEATED AND ENCLOSED FRESH
WATER TANK



RECESSED COMMAND CENTER



SOLID DOORS TO BEDROOM



FULL EXTENSION BALL BEARING
DRAWER GUIDES



EXTRA LARGE POT AND PAN DRAWER
AT THE DINETTE BASE



SHOE NOOK



STANDARD EXTERIOR KITCHEN WITH R.V. GRILL ON THE 30KQBSS, 31KQBTS
AND 32BHDS IS A GREAT WAY FOR THE CAMP CHEF TO ENJOY THE GREAT
OUTDOORS.



OVERSIZE STORAGE DRAWER
UNDER THE SOFA



SILVERWARE DRAWER



16 GAL. PER HOUR G/E QUICK
RECOVERY DSI WATER HEATER

SALEM
NORTHWEST

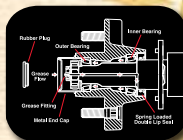


Craftsmanship



EXCELLENT CRAFTSMANSHIP

Only the finest attention to detail goes into each Salem. Our skilled craftsman have many years of experience building beautifully finished cabinetry. The solid nature of our well designed woodwork is another reason why Salem is the best built RV on the road.



E-Z LUBE
BEARING LUBRICATION SYSTEM



The E-Z Lube system allows grease to flow with ease to both the outer and inner bearings for a complete repack. No disassembly required.

Salem Construction

- A. RADIUS TRIPLE ENTRY STEPS
- B. 2" X 3" FLOOR JOISTS 12" ON CENTER
- C. 5/8" STRUCTURE WOOD FLOOR DECKING
- D. 2" WALL STUDS 16" OR LESS ON CENTER
- E. RADIUS FIBERGLASS 30" ENTRY DOOR
- F. .024 ALUMINUM SIDING
- G. 5" BOWED TRUSS ROOF RAFTERS

- H. SEAMLESS, ONE PIECE ROOF (12 YR. WARRANTY)
- I. R-7 FIBERGLASS INSULATION THROUGHOUT
- J. EXTRA LARGE FULL PASS THRU STORAGE
- K. CLAMP RING SAFETY GLASS WINDOWS
- L. SMOOTH ROLLED SKIRTING
- M. IN FLOOR DUCTED HEAT
- N. DIAMOND PLATE ROCKGUARD
- O. 3/8" ROOF DECKING (FULL WALK-ON ROOF)

- P. LP BOTTLE COVER W/ EASY ACCESS
- Q. 13.5K DUCTED ROOF, HIGH OUTPUT A/C
- R. STAIN RESISTANT CARPET
- S. HITCH LIGHT
- T. E-Z LUBE AXLES
- U. PREMIUM GRAPHICS

Salem Standards and Options

Construction and Interior

- Full Walk on One Piece Seamless Roof with 12 yr. Warranty
- Extra Large Full Pass Through Storage (per floorplan)
- E-Z Lube Axles
- Cold Crack and Mildew Resistant Vinyl Patio Awning
- Safety Glass Windows
- Steel Framed 30" Smooth Radius Fiberglass Main Entry Door
- Cambered Chassis
- Enclosed Fresh Water Tank in a Heated Compartment
- 16 Gal. per hour G/E Quick Recovery DSI Water Heater
- Water Heater By-pass
- 2" Wall Construction 16" (or less) on Center
- R-7 Fiberglass Insulation Throughout
- 13-ply Cross Micro-Laminated Beam Header above Slide-outs
- Triple Sealed Slideouts
- Electric Slide-Out Systems (Flush Floor)
- Swing Arm Entry Assist Handle
- Two Marine Grade Exterior Speakers

Kitchen

- Dometic® Double Door Refrigerator (2 yr. Warranty)
- High Rise Faucet
- High Definition Countertops
- Deep Basin 60/40 Residential Style Sink
- Microwave w/ Carousel
- 3-Burner, High Output Range with Oven (2 yr. Warranty)
- Range Hood with 12-Volt Exhaust Fan and Light
- One Piece Plank Wood Linoleum Flooring
- Solid Wood Drawers
- Knife Rack (behind cooktop)
- Large Overhead Cabinets
- Wall-Mounted Systems Convenience Panel

- New Brushed Nickel Hardware
- Full Extension Ball Bearing Drawer Guides
- Abundant Cabinet Storage

Living Room

- 80" Interior Height Travel Trailers
- Ducted 13,500 BTU Roof Air Conditioner w/ Quick Cool
- Huge Storage Drawer at Sofa Base (Select Models)
- Extra Large Pedestal Booth Dinette w/ Large Drawer (most models)
- Large Dinette Picture Window
- Digital TV Antenna and Booster
- Extra Large Overhead Cabinets
- 25K BTU Suburban Forced Air DSI Furnace w/ Digital Thermostat (2 yr. Warranty)
- In-Floor Ducted Heat

Bedroom

- Plush Comforter and Headboard
- Strut Lifted Storage Area under Bed
- Bedside Mirrored Wardrobes
- Bedside 110v Power Outlets (2)
- Solid Bedroom Privacy Doors
- Storage Shelf Above Bed

Bathroom

- Neo-Angle Shower w/ Tub Surround (Select models)
- 12-Volt Power Bath Roof Exhaust Vent
- Wooden Medicine Cabinet w/ Mirrored Door
- Fresh-Water Flush Toilet
- Tooth Brush Holder and Towel Ring
- Vinyl Tub Surround

Security and Safety

- LP Leak Detector
- Smoke Detector
- Carbon Monoxide Detector
- Fire Extinguisher
- Hitch Light (Travel Trailers)
- Amber Patio Light
- Welded Heavy Duty Safety Chains (Travel Trailers)
- Electric Brakes (all wheels)
- GFI Receptacles
- ANSI 119.2 Certified
- Meets all National Highway Administration Specifications

Northwest Package

- Northwest Insulation - Fully insulated walls and floor, Double Insulation in Ceiling provides year round comfort
- Diamond Plate Front Shield
- Northwest Roof System - Full front to back walk on roof, one piece rubber to prevent leaks provides sturdy roof for snow loads and storage pod
- Auto Loom-Protects 12 volt wire
- Tinted Windows
- 2 x 3's with Metal Strapping - At key stress areas
- Northwest Winterization Package - Water Heater By-Pass, color coded freeze resistant water lines

Salem Options

- Stabilizer Jacks (4)
- Cable TV/Satellite Hook-up
- Skylight over Tub
- 30-lb LP Bottles w/ Cover and Auto Change Over

Contact your Salem dealer for a complete list of options

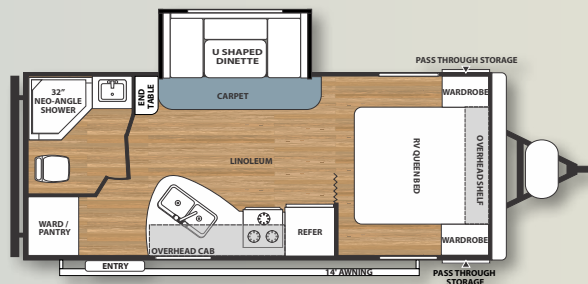


SALEM

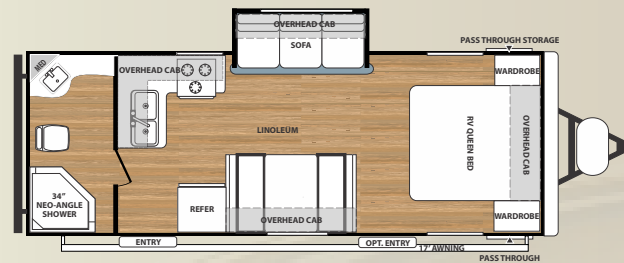
NORTHWEST



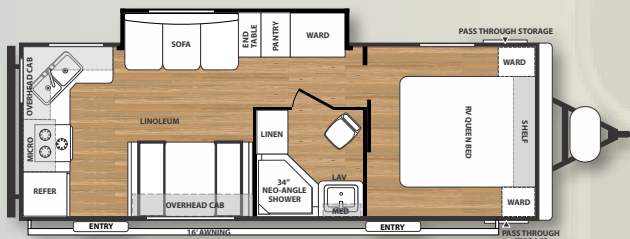
Salem Travel Trailer Floorplans



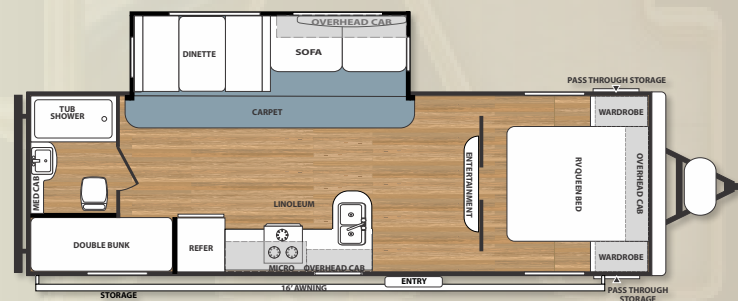
21RBS



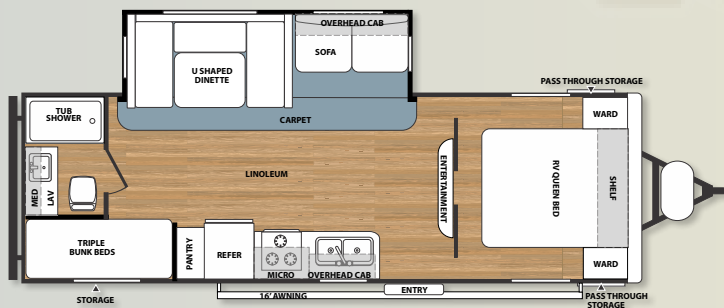
23FBS



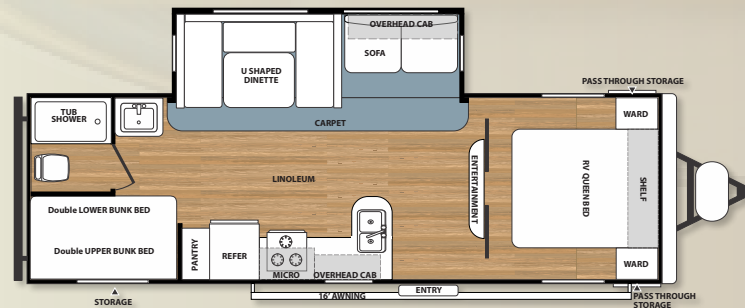
24RKS



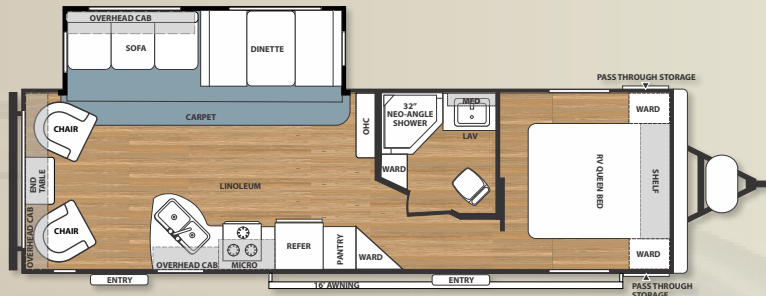
26GBUD



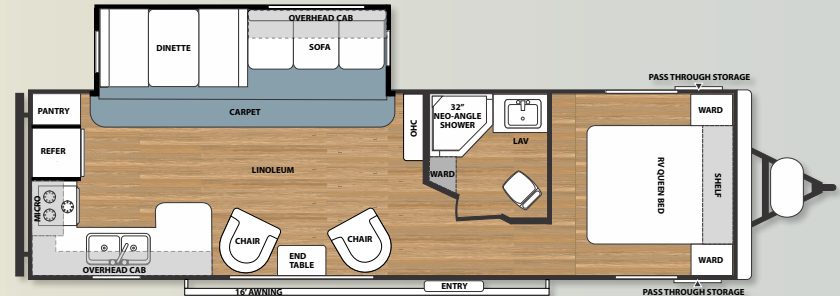
26TBUD



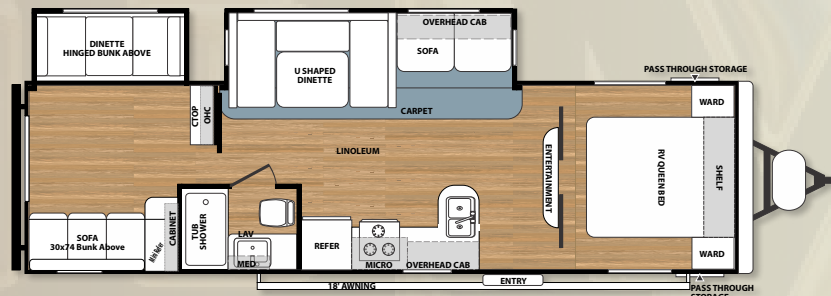
27DBUD



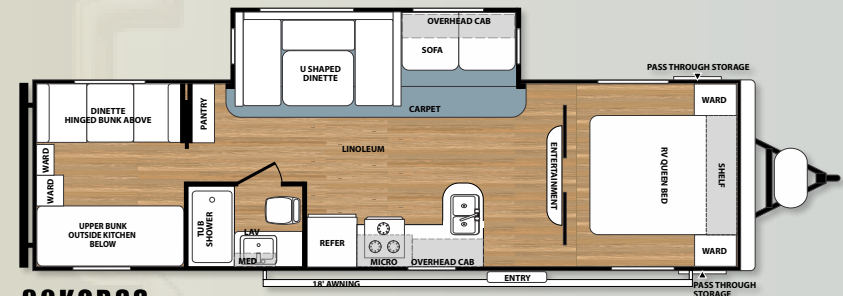
27RLSS



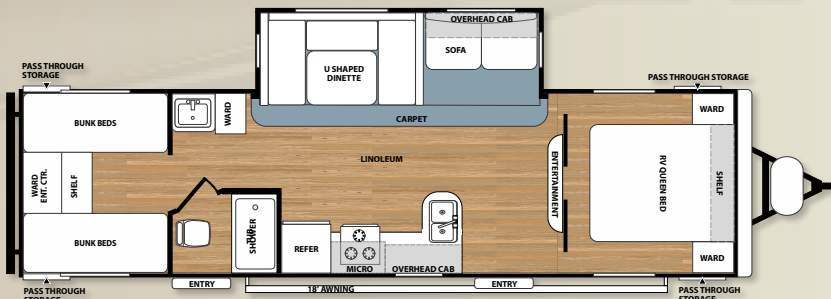
27RKSS



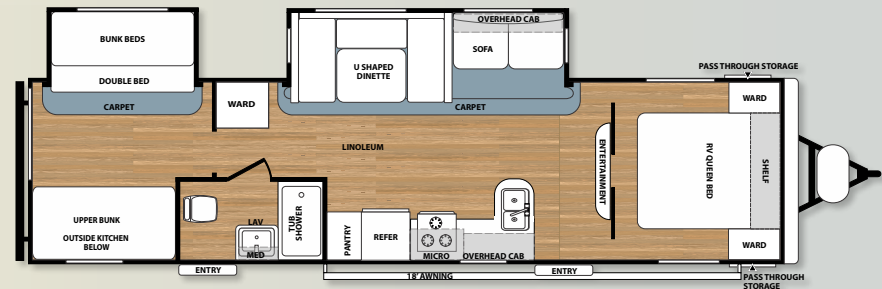
29QBDS



30KQBSS



30QBSS



32BHDS

Please refer to the back cover regarding specifications

travel trailer specifications

| MODEL | T21RBS | T23FBS | T24RKS | T26GBUD | T26TBUD | T27DBUD | T27RKSS | T27RLSS | T29QBDS | T30QBSS | T30KQBSS | T32BHDS |
|----------------------|--------|--------|---------|---------|---------|---------|---------|---------|---------|---------|----------|---------|
| HITCH WEIGHT | 515 | 585 | 625 | 745 | 800 | 785 | 860 | 697 | 890 | 995 | 915 | 910 |
| SHIPPING WEIGHT | 4815 | 5041 | 5444 | 5735 | 6310 | 6060 | 6760 | 6380 | 7355 | 6675 | 6820 | 8245 |
| GVWR | 7515 | 7585 | 7625 | 7745 | 7800 | 7785 | 9660 | 9497 | 9690 | 9795 | 9715 | 11070 |
| CCC (Cargo Capacity) | 2662 | 2506 | 2143 | 1972 | 1452 | 1687 | 2862 | 3079 | 2297 | 3082 | 2857 | 2787 |
| EXT. LENGTH | 24' 9" | 26' 2" | 27' 10" | 30' 5" | 28' 9" | 30' | 33' 2" | 32' 2" | 34' | 33' 2" | 33' 2" | 36' |
| EXT. HEIGHT W/AC | 11'1" | 10' 6" | 11' 3" | 11' 3" | 11' 3" | 11' 3" | 11' 3" | 11' 3" | 11' 3" | 11' 3" | 11' 3" | 11' 3" |
| INT. HEIGHT | 80" | 80" | 80" | 80" | 80" | 80" | 80" | 80" | 80" | 80" | 80" | 80" |
| FRESH TANK * | 45 | 56 | 45 | 45 | 45 | 45 | 45 | 45 | 45 | 45 | 45 | 45 |
| GREY TANK | 27 | 33 | 64 | 27 | 27 | 27 | 66 | 66 | 32 | 32 | 32 | 59 |
| BLACK TANK | 32 | 34 | 27 | 33 | 33 | 32 | 42 | 42 | 42 | 27 | 27 | 32 |
| AWNING SIZE | 14' | 17' | 16' | 16' | 16' | 16' | 16' | 16' | 18' | 18' | 18' | 18' |

*Includes hot water heater

24/7 EMERGENCY ROADSIDE ASSISTANCE

For a worry-free ownership experience, Forest River includes one year of Coach-Net RV Technical & Roadside Assistance with each RV purchase. Whether new to the RV lifestyle or an experienced RV enthusiast, Forest River owners have 24/7 access to technical, operational and emergency road service coverage throughout the US & Canada. Coach-Net's fast, dependable service is just a phone call away.

Coach-Net
RV Technical & Roadside Assistance

FREE MEMBERSHIP
to Forest River Owners' Group

www.forestriverfrog.com



1) Forest River, Inc. dealers are independently owned and operated businesses so priority service and scheduling is at their discretion and is often provided to customers that purchased their unit at that dealership.

2) Purchasing locally allows customers to establish meaningful relationships with a dealer, enhancing the RV experience through assistance with product questions, user tips or RV regulations for your state or country, and much more!

3) Canadian customers must meet requirements to bring an RV purchased out of the country to their home. These requirements may involve additional inspections and certifications, taxes and fees. Your local Canadian Dealer is a professional at meeting these requirements.

4) Scheduling timely warranty repairs and adjustments through a local dealership provides far greater flexibility and convenience to you, the customer!

It is the goal of Forest River, Inc. that all of our RV owners fully enjoy the RV experience and that customer satisfaction meets or exceeds their expectations!

MINERAL DECOR



LEATHER DECOR



CARAMEL DECOR



THE SALEM FAMILY



CRUISE LITE



SALEM



VILLA SERIES



HEMISPHERE



Learn More
Scan this barcode using a QR Reader on your smart phone to learn more about Forest River.



A Berkshire Hathaway company.

Forest River, Inc.
1429 SE Uglov
Dallas, OR 97338
(503) 831-1200

www.forestriverinc.com/salem
www.forestriveraccessories.com

All specifications contained herein are based on the latest product information at time of printing. Forest River reserves the right to make changes in colors, materials, equipment and specifications at any time without notice and assumes no responsibility for any errors in this brochure. The pictures in this brochure may show props and optional equipment. PLD918

© 2014 - Salem - a division of Forest River Inc.
A Berkshire Hathaway company