

AVALANCHE

by Keystone



THE NEXT GENERATION OF RVs
WWW.KEYSTONERV.COM/AVALANCHE



**Keystone RV
Company**

AVALANCHE

by Keystone

Team Avalanche proudly introduces the FIRST "Next Generation" fifth wheel designed for today's family. Avalanche offers features, comfort and livability for extended trips or weekend vacations. With emphasis on family friendly floorplans, Avalanche is the ideal coach for the active lifestyle.

Avalanche comes standard with several game changing features like *Wide Body Spacious Interiors, Huge Panoramic Frameless Windows and Enormous Slide Room Heights*. These are features that simply won't be found in other high profile fifth wheel brands.

Avalanche was designed with you in mind - a customer who deserves and demands the highest level of *Quality and Craftsmanship* available in the marketplace today.

-Team Avalanche

NEXT GENERATION

Comfort

-4° Outside



72° Inside

COMFORT INDOORS

With an impressive list of industry- leading construction advancements, Avalanche sets the bar in four season living. But don't just take our word for it — look at these official test results from a world leader in heating and cooling technology — Dometic Corporation. Subjected to below zero temperatures inside their legendary test chamber, the following temperatures were recorded inside an Avalanche with the thermostat set at 74°;

Living room	72°
Bedroom	70°
Bathroom	75°
Pass-Thru/Utility Center....	58°*

Of course, inside temperatures are only part of the story. With our industry leading "Therma-Shield 37" package, all the holding tanks and dump valves remained completely operational on our test unit with recorded temperatures consistently above 50° in these critical areas.

Not everyone needs this kind of protection, but when four season comfort becomes important, make sure you demand the very best... demand an Avalanche!

*Testing was done in a controlled independent environment.

FULL TIME CAMPING



FULL TIME SIZE

- Summit Slides at 6' 8" Interior Height
- (2) Massive 60" x 48" Windows in Slide Box
- Cloud 9 King Beds
- Oversized Rectangular Showers
- Wide Body Unit Measuring 100"

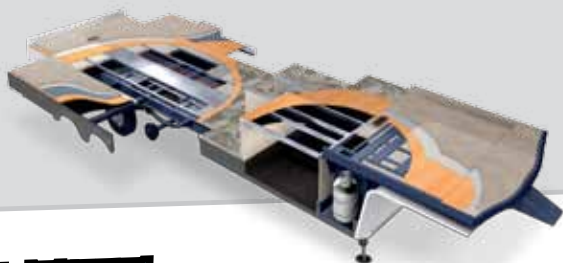
FULL TIME ENTERTAINMENT

- 48" Standard Insignia LED TVs
- Interior/Exterior Speakers
- Bluetooth Sound System
- 32" Bedroom LED TVs
- Exterior Kitchen with TV/Micro/Refer



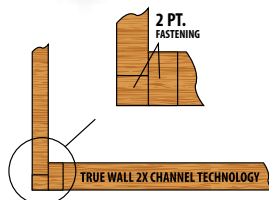
FULL TIME COMFORT

- Four Seasons Package Tested to -4 Degrees
- Thomas Payne Double Spring Furniture
- 13 Cu. Ft. Double Door Refrigerator (most floor plans)
- Fireplace (most floor plans)
- Looped AC System (BTU's -15,000 & 13,500)



FULL TIME CONSTRUCTION

- G-Rated Tires with Nitrogen
- 7,000 lb. Rated Axles
- Custom Painted Front Cap
- 5 Year Warranty on Graphics
- Frameless Windows (Dual Pane Option)



BONUS FEATURES

- LED Lighting
- Hidden Hinges in Kitchen
- BeauFlor® Plank Flooring
- LG Solid Surface Kitchen Countertops
- New Villa Ash Wood Trim Package



AVALANCHE
by Keystone

NEXT GENERATION
Style

331RE KITCHEN



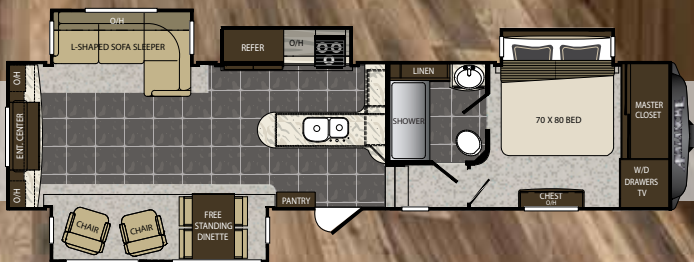
331RE SOFA SLEEPER



331RE BEDROOM



331RE WARDROBE STORAGE





AVALANCHE
by Keystone

NEXT GENERATION
Style

360RB BUNK ROOM SHOWN
IN IVY LEAGUE DECOR



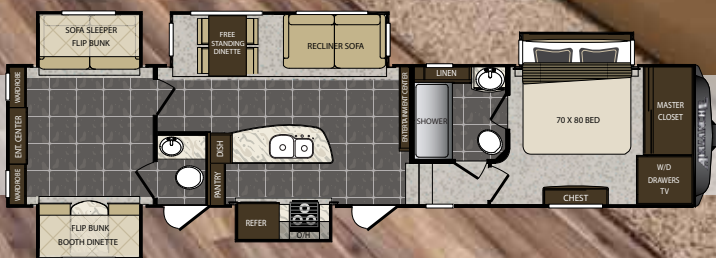
360RB ENTERTAINMENT CENTER



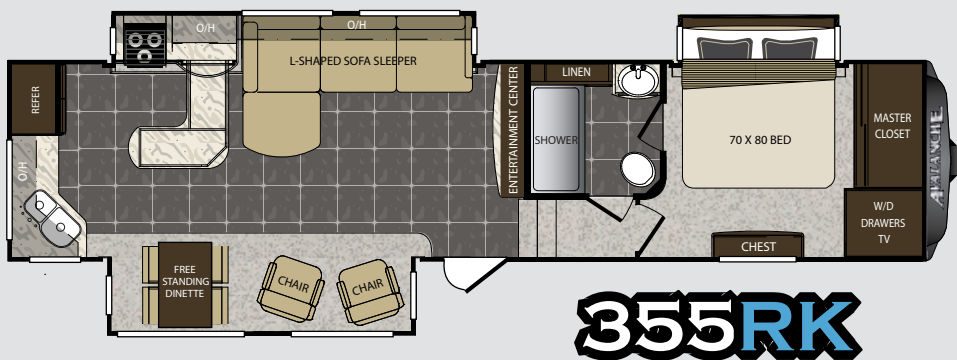
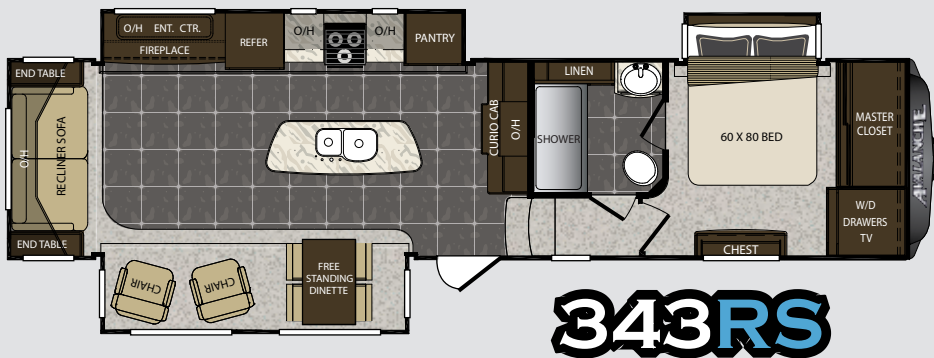
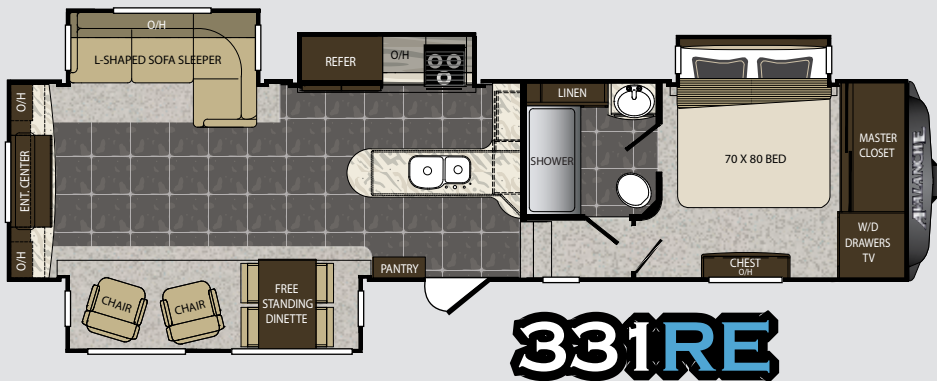
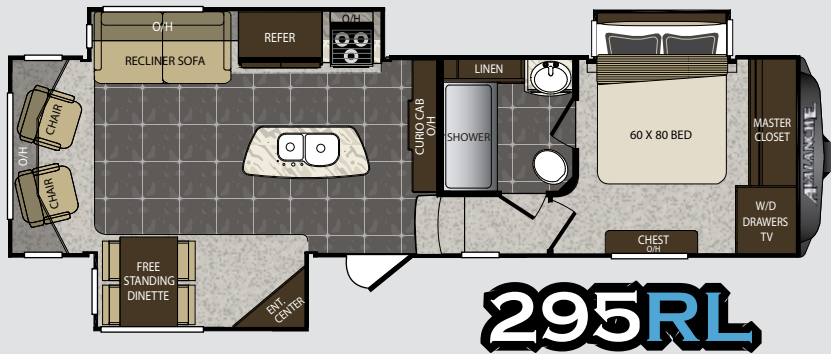
360RB SUMMIT SLIDE



360RB KITCHEN



AVALA FLOOR



SPECIFIC

MODEL	295RL	331RE	343RS
SHIPPING WEIGHT	11000	12501	11650
CARRYING CAPACITY	3000	2999	3850
HITCH WEIGHT	2425	2505	2200
EXTERIOR LENGTH	33' 11"	38' 7"	36' 11"
EXTERIOR WIDTH	8' 4"	8' 4"	8' 4"
EXT. HEIGHT - A/C TOP	12' 11"	12' 11"	12' 11"
FRESH WATER (GAL.)	66	66	66
WASTE WATER (GAL.)	50	50	50
GRAY WATER (GAL.)	85	85	85
LP CAPACITY (LBS.)	60	60	60
AWNING LENGTH	17'	17'	17'

DISCLAIMER: Product information is as accurate as possible as of the date of publication of this brochure. All features, floor plans, and specifications in this brochure are subject to change without notice. Please also consult Keystone's web site at www.keystonerv.com for more current product information and specifications. Tow Vehicle Disclaimer. CAUTION: Owners of Keystone recreational vehicles are solely responsible for the selection and proper use of tow vehicles. All customers should consult with a motor vehicle manufacturer or their dealer

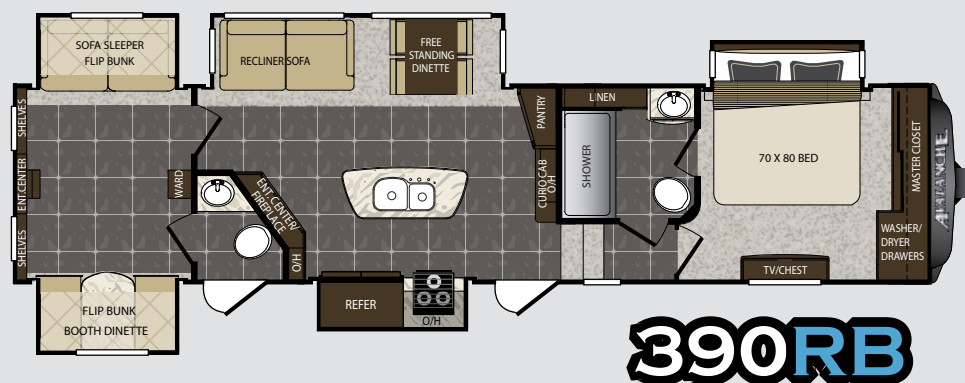
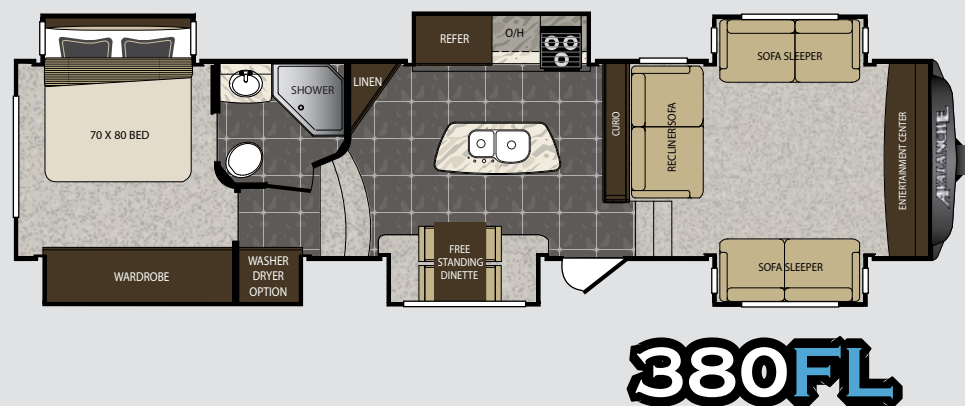
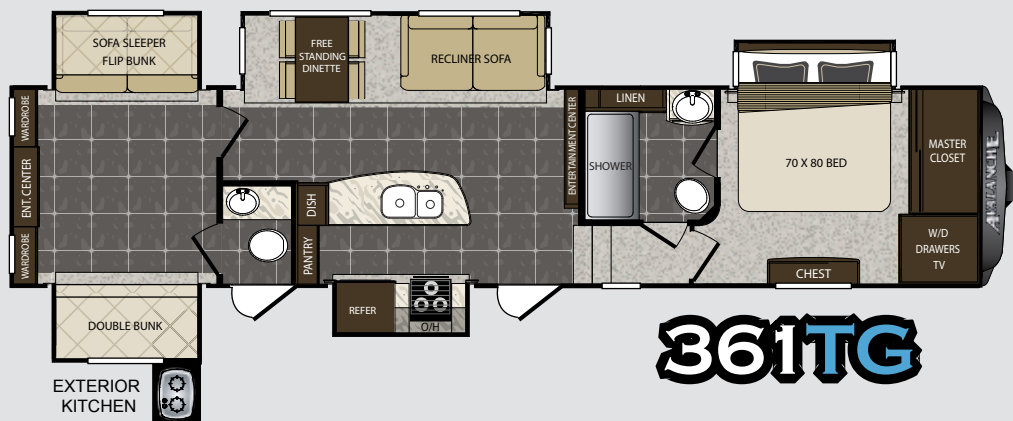
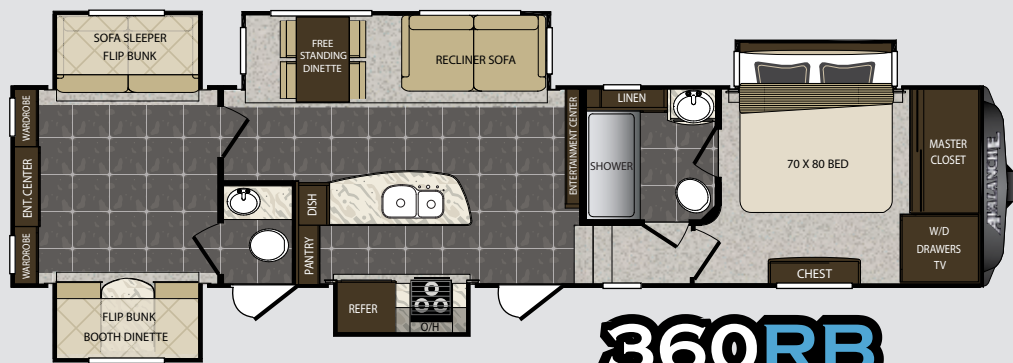
AVANCE by Keystone PLANS



CONFIGURATIONS

355RK	360RB	361TG	380FL	390RB
11696	13325	13332	12810	13385
3304	2175	2168	2690	2115
2865	2270	2175	2775	2435
37' 11"	39' 8"	39' 8"	39' 8"	39' 8"
8' 4"	8' 4"	8' 4"	8' 4"	8' 4"
12' 5"	12' 11"	12' 11"	12' 11"	12' 11"
66	66	66	66	66
50	85	85	43	80
85	85	85	62	80
60	60	60	60	60
17'	17'	17'	14'	17'

concerning the purchase and use of suitable tow vehicles for Keystone products. Keystone disclaims any liability or damages suffered as a result of the selection, operation, use or misuse of a tow vehicle. KEYSTONE'S LIMITED WARRANTY DOES NOT COVER DAMAGE TO THE RECREATIONAL VEHICLE OR THE TOW VEHICLE AS A RESULT OF THE SELECTION, OPERATION, USE OR MISUSE OF THE TOW VEHICLE. *Length is defined as the distance from the center line of hitch pin/coupler to rear bumper of trailer. Add 6 inches for MOR/ryde pin box. ** Add 6 inches for second A/C.





AVALANCHE
by Keystone

NEXT GENERATION
Style

355RK SHOWN IN
EBONY VINE DECOR



355RK KITCHEN



355RK SUMMIT SLIDE



355RK BEDROOM



AVALANCHE

by Keystone

-4° NEXT GENERATION Construction

With an impressive list of industry-leading construction advancements, Avalanche sets the bar for four season living.

WALL CONSTRUCTION (R-10)

1. Class A style "slam" baggage doors
2. Dual 1/8" luan backers with staggered seams
3. High density block foam insulation
4. Radius window corner blocks for additional integrity
5. 2" Welded aluminum sidewall studs
6. Fiberglass batten insulation
7. Thermo-foil insulation
8. Molded fiberglass cap with 4mm coated graphics
9. Metal backing strips for added support
10. Cambered steel cap backing for increased turning radius - "Max Turn"

ROOF CONSTRUCTION (R-28)*

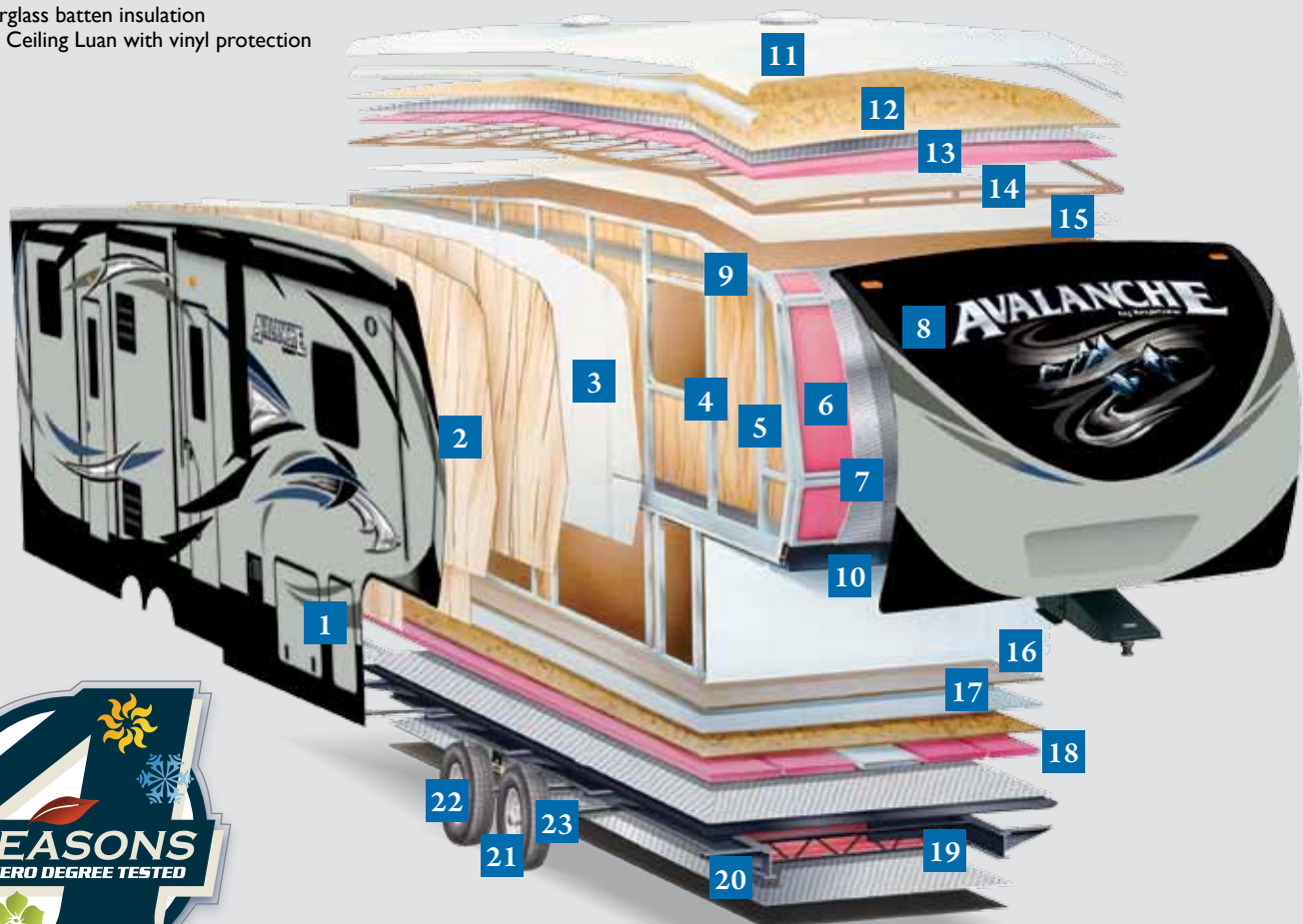
11. One-piece TPO roof with 12-year warranty
12. 3/8" Fully walkable roof decking
13. Thermo-Foil insulation
14. Fiberglass batten insulation
15. 1/8" Ceiling Luan with vinyl protection

FLOOR CONSTRUCTION (R-37)*

16. Residential grade high density carpet with stain protection
17. Residential grade carpet padding
18. Floor wrap, wood backing, aluminum structure, high density block foam, and Astro-Foil insulation, thermo-insulation
19. Thermo-Shield holding tank insulation featuring: One piece fluted polypropylene fully enclosed subfloor, fiberglass batten insulation, and ducted heat

TIRES AND CHASSIS

20. 10" steel "powder coated" I-beams
21. G rated tires
22. E-Z Lube 8 lug, 7,000lb axles
23. Equa-Flex suspension with steel shackles and greasable brass bushings



145 CU. FT.

A

NEXT GENERATION *Features*

A. One look at the Avalanche's **BASEMENT STORAGE** tells the story - the Avalanche boasts massive pass-through storage at over 145 cubic feet! Plus, you won't have to worry about your possessions sliding around as we've used non-skid rubber diamond plate flooring that isn't slippery like felt carpet lining.

B. **LIPPERT EQUA-FLEX SUSPENSION**

C. The Avalanche's **FULLY ENCLOSED AND HEATED "WATER WORKS"** compartment houses your dump valves, low point drains, high pressure sprayer, black tank flush hookup, quick winterization kit and city water hookups.

D. The Avalanche uses the slide out technology you see on million dollar motor coaches. These **HYDRAULIC SLIDES** quietly move in and out much faster and smoother than cable slides.

E. Storage compartments are easy to access in the Avalanche thanks to the motorhome style **"SLAM" BAGGAGE DOORS**. These compartment doors feature easy opening pad handles with locks for added security of your stored valuables.

F. Set-up and pack-up is quick and easy in an Avalanche. One reason is the **POWER FRONT AND REAR STABILIZER JACKS**, with easily accessible controls. You'll also notice that the Avalanche jacks are placed outside of the main frame rails, for a wider, more sturdy base.

B



C



F



E



D



NEXT GENERATION *Innovation*



PATENTED FRONT CAP THAT ISN'T DYED LIKE COMPETITORS. INCLUDES 5 YEAR WARRANTY ON FRONT CAP 4MM GRAPHICS



100" WIDE BODY



SUMMITT SLIDES WITH HUGE WINDOWS FOR BEAUTIFUL PANORAMIC VIEWS



DIAMOND PLATED RUBBER PASS THROUGH FLOORING THAT MAKES FOR EASY CLEAN UP



OVERSIZED SHOWERS WITH PLENTY OF LINEN STORAGE



OPEN CONCEPT FLOOR PLANS

Stay in Touch



Avalanche is always just a touch away. You'll find 360 virtual tours, location of your nearest dealer, photos, videos and all of the latest information about Avalanche on our easy to navigate website. Everything you need can be accessed anytime, day or night, from home or on the road. You can also find us on the Keystone RV facebook.

STANDARDS & OPTIONS

EXTERIOR FEATURES

- "No Sweat" vented attic system
- 10" Beams with Z-frame technology
- 50 AMP service w/ detachable power cord
- Hydraulic selector valves for slideouts
- Power front landing jacks
- Gutters w/ rain spouts
- Rear ladder
- Tinted 80% safety-glass windows
- Super-size 6'4" tall, 30" wide entry door
- Deluxe graphics package
- One piece polypropylene underbelly
- MAX TURN high-gloss fiberglass front cap and rear with 30% better turning radius, aerodynamic design w/ 18% better drag efficiency and hitch Assist back up mirror

ALL-IN-ONE "WATERWORKS" EXTERIOR UTILITY CENTER

- Easy siphon winterization system
- Water heater bypass
- Enclosed low point drain valves
- Ducted heat for cold weather protection
- Dump valves
- 110V outlet
- Black tank spray hookup
- Hot & Cold high pressure water hose with quick disconnect

INTERIOR FEATURES

- Heavy duty residential ball bearing drawer guides
- Extra deep, fully extendable drawers
- Solid surface countertops
- Solid Surface sink cover
- Stainless steel extra deep sink with dual bowls
- High rise, single lever kitchen faucet
- Maximized kitchen storage w/ more drawers and pantry space
- Ceiling fan with upgraded lighting fixtures
- LP leak detector
- "One Place Command Center" centrally located operational switches & gauges

- Translucent glass shower door & enclosure
- Hand held massaging shower head
- Skylight over shower
- Porcelain toilet
- Single level master bedroom suite
- Designer headboard
- Cross ventilation bedroom windows where available
- Quilted bedspread

UPGRADED APPLIANCE PACKAGE

- High output range w/ 22" oven
- 12 Gallon DSI 2-way water heater
- 35,000 BTU furnace

BASE CAMP COLLECTION

- Solid wood cabinet doors, drawers, and hardwood fascia
- Solid surface kitchen countertops and flush mounted sink covers
- Huge LED TV
- 12V AM/FM/CD/DVD home theater system w/surround sound effect speakers
- Digital TV antenna w/ built in booster
- Dual cable & satellite hookups
- Wired and braced for second A/C in bedroom
- Washer and dryer prep (combo unit)
- 50 AMP service

WHITEOUT PACKAGE

- Therma-Shield R37 Triple insulated, ducted and heated holding tanks
- Drop frame technology
- Class A bus-style latch "slam" baggage doors
- G rated tires
- Heavy duty Easy Lube 7,000lb axles
- Power front and rear jacks
- One-touch electric awning w/ adjustable arms
- Aluminum wheels

SUSPENSION

- Improved impact absorption
- Improved axle equalization
- Greasable "wet" bolts
- Long lasting 1/2" steel shackle plates
- Long lasting bronze bushings

COMFORT PACKAGE

- Wide body width with upgrade construction
- Summit slides with super sized windows
- Frameless windows
- Driftwood gray exterior
- Wood window blinds
- Pressurized metal Anderson valve control switch at water works area
- Hidden hinge at cabinets
- 54" stall shower with glass tri-fold and linen

OPTIONS

- Electric Fireplace (per floor plan)
- Fantastic Fan (kitchen)
- Generator Prep
- Dual A/C Package
- 32" LED Bedroom TV
- Dual Pane Windows
- Canadian Compliance
- RVIA Seal
- Winterization
- Go RV MEP Seal
- 12 cu. ft. 4 Door Refrigerator (most models)



AVALANCHE
by Keystone

www.keystonerv.com/Avalanche

AVALANCHE

by Keystone

INTERIOR DECOR OPTIONS



IVY LEAGUE



FOREST FLOOR

BUY LOCALLY
PURCHASING YOUR RV LOCALLY

It's up to you where you purchase your new Avalanche, but may we suggest your local dealer? Not only does it help your local economy and provide jobs, but it will also give you an opportunity to develop a service relationship with someone that will come to know you and your coach. Congratulations on finding the best built, best equipped, best value in the industry, and happy travels!

YOUR LOCAL DEALER:

VISIT OUR WEBSITE TO VIEW INTERIOR PHOTOS,
360 VIRTUAL TOURS AND MUCH MORE.



AVALANCHE
by Keystone

www.keystonerv.com/Avalanche



Go RVing
Life's A Trip

2642 Hackberry Drive
PO Box 2000
Goshen, IN 46527-2000
(574) 535-2100

 **Keystone RV Company**
www.keystonerv.com

Product information is as accurate as possible as of the date of publication of this brochure. Features, floor plans, and specifications are subject to change without notice. Please also consult Keystone's web site at www.keystonerv.com for more current product information and specifications. Tow Vehicle Disclaimer: CAUTION: Owners of Keystone recreational vehicles are solely responsible for the selection and proper use of tow vehicles. All customers should consult with a motor vehicle manufacturer or their dealer concerning the purchase and use of suitable tow vehicles for Keystone products. Keystone disclaims any liability or damages suffered as a result of the selection, operation, use or misuse of a tow vehicle. KEYSTONE'S LIMITED WARRANTY DOES NOT COVER DAMAGE TO THE RECREATIONAL VEHICLE OR THE TOW VEHICLE AS A RESULT OF THE SELECTION, OPERATION, USE OR MISUSE OF THE TOW VEHICLE.

NOVEMBER 2014