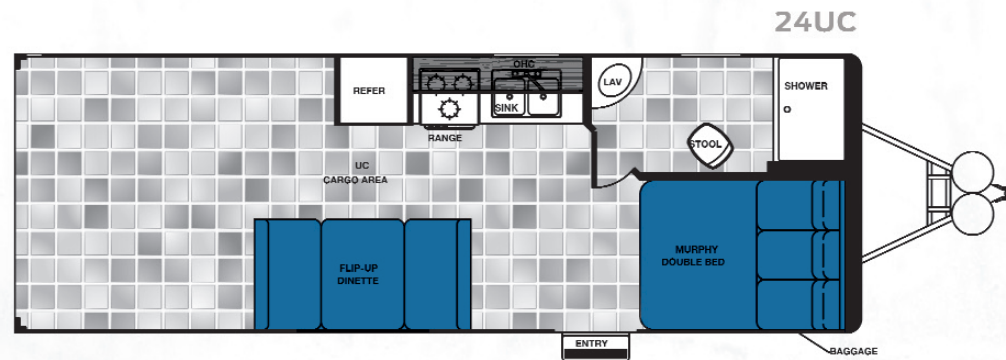
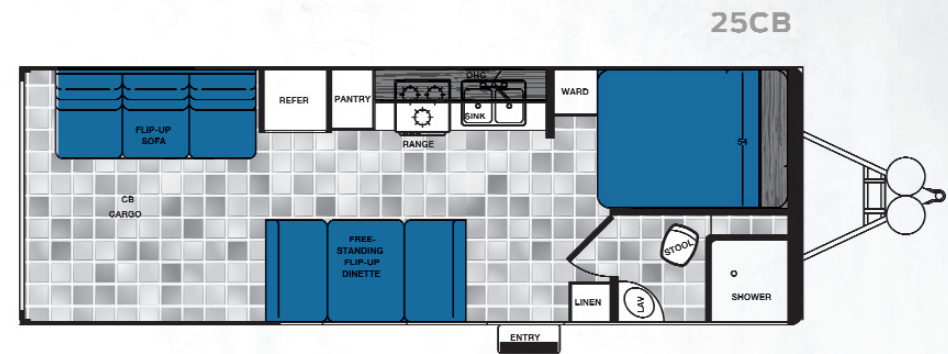
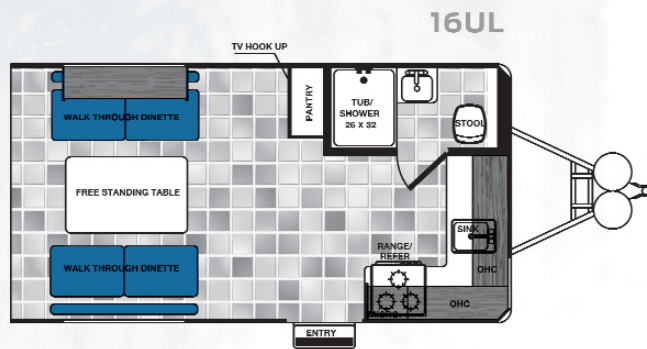


# WORK *and* PLAY

ULTRA LIMITED EDITION MODELS





WORK AND PLAY

# STANDARDS & OPTIONS

## INTERIOR

- 6 cubic foot refrigerator \* n/a 16UL
- Burner Cook top
- Microwave
- 6 gallon elec./gas DSI Water heater
- 6 D Rings mounted in steel
- Toilet with floor flush
- 2 interior fabric choices
- 2 interior wood choices
- Easy Glide locking drawer guides
- Lumber core stiles
- Cabinets are screwed not stapled

## EXTERIOR

- Roof air conditioner
- Full length awning
- Aluminum wheels
- Corner stabilizer jacks
- TV antenna
- Cable hook up
- Twin 30 lb. propane tanks with cover

- Double entry step
- Nitro filled tires
- Hitch light
- Ramp door - rated up to 2500 lbs
- Rear load light

## CONSTRUCTION

- 16" on center steel roof rafters throughout
- One piece aluminum roof
- 16" on center floor trusses throughout cargo area
- Million mile bolts
- 11 Gauge steel wheel wells
- Heavy Duty aluminum trim
- Dexter axles

MODEL	CARGO LENGTH
WPT16UL	8'5" RS / 11'11" CS
WPT24UC	9'4" RS / 22' CS
WPT25CB	8' 4" RS / 18' CS

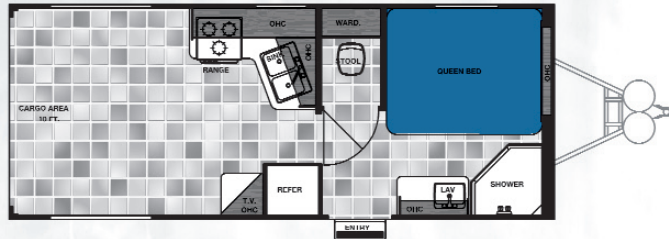
TRAVEL TRAILERS FROM  
GROUND TO TOP OF A/C ARE 11'



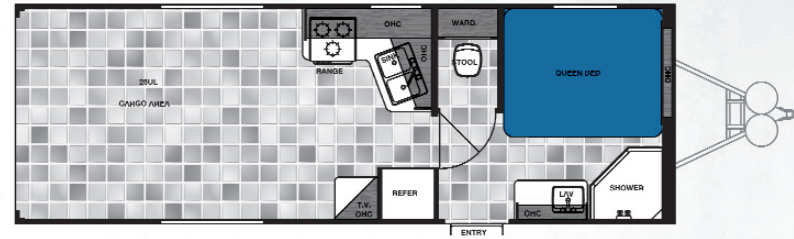
# WORK *and* PLAY

ULTRA LITE MODELS

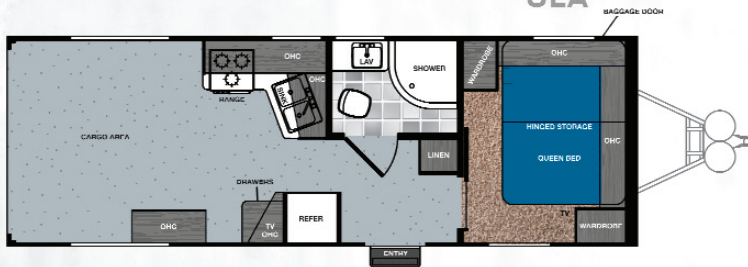
21UL



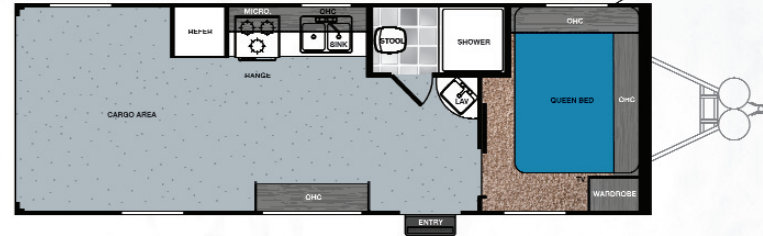
25UL



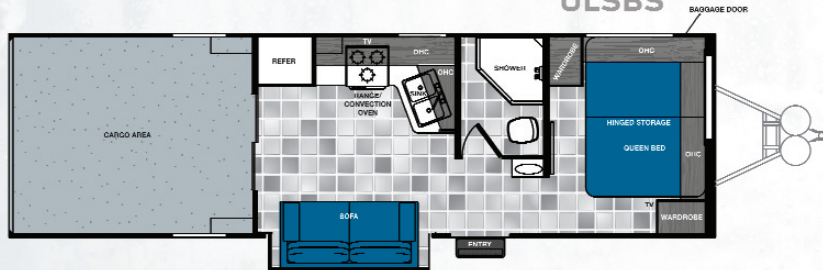
ULA



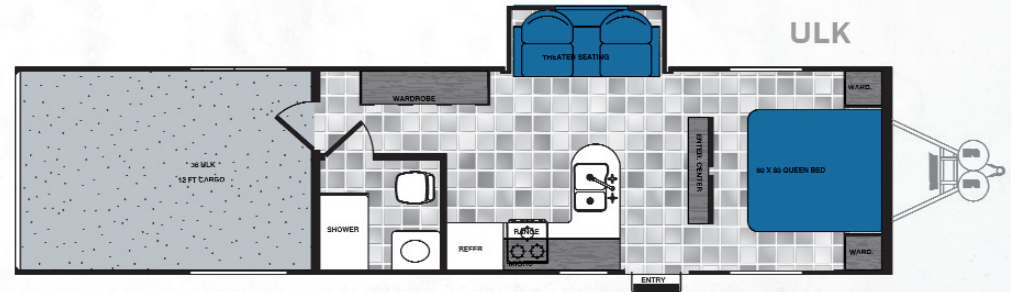
UDT



ULSBS



ULK





## WORK AND PLAY

# STANDARDS & OPTIONS

### INTERIOR

- 8 cubic foot refrigerator
- 3 Burner Cook top
- Convection microwave
- 6 gallon elec./gas DSI water heater
- 6 D Rings mounted in steel
- Porcelain Toilet
- 2 interior fabric choices
- 2 interior wood choices
- Easy Glide locking drawer guides
- Night shades in bedroom
- Lumber core stiles
- Cabinets are screwed not stapled
- LED lights throughout
- 7'6" interior height
- AM/FM/CD/DVD stereo
- Rear pulldown screen

### EXTERIOR

- 15k Roof air conditioner
- Power awning with LED lights
- Aluminum wheels
- Corner stabilizer jacks
- \* Power stabilizer jacks on VFB & VFKS
- Power tongue jack
- TV antenna
- Cable hook up
- Twin 30 lb. propane tanks
- Double entry step
- Nitro filled tires
- Hitch light
- Ramp door - rated up to 3000 lbs
- Rear LED load light
- One-piece fiberglass front cap
- Toylock
- Outside speakers
- Generator rack

### OPTIONS

- 32" flat screen TV
- 4K Onan generator/ 5.5 K Onan generator
- 30 gallon fuel station / cell
- Spare tire
- Spare tire carrier
- Choice of furniture
- Gatorhyde spray in flooring ipo std
- 2 exterior colors

### CONSTRUCTION

- 16" on center steel roof rafters throughout
- One piece aluminum roof
- 16" on center floor trusses throughout cargo area
- Million mile bolts
- 11 Gauge steel wheel wells
- Heavy Duty aluminum trim
- Dexter axles

### MODEL

### CARGO LENGTH

WPT21UL	7'3"RS / 8'3"CS
WPT25UL	11'3"RS / 12'3"CS
WPT25UDT	6'1" RS / 18' 5" CS
WPT25ULA	7'8"RS / 9'1"CS
WPT275ULSBS	9'6"
WPT36ULK	12'

**TRAVEL TRAILERS FROM  
GROUND TO TOP OF A/C ARE 11' 5"**