

# KODIAK

TRAVEL TRAILERS, EXPRESS, EXPANDABLES & TOY HAULER

KODIAK



Model  
300BHSL

TRAVEL TRAILERS, EXPRESS, EXPANDABLES & TOY HAULER

# KODIAK





291RESL , shown in Sable Decor



291RESL , Dinette & Chair Slideroom



291RESL , Tri-Fold Sofa

Kodiak is the leader in ultra-lite technology. With units light enough to be towed by most SUV's minivans, crossovers and light trucks, we're sure to have the model that best fits your family's needs.

But, just because Kodiak is an ultra-lite doesn't mean it's light on storage or features. With spacious countertops, well-designed cabinets and oversized pass-thru exterior storage compartments, it's easy to take everything along on your next adventure.



# Bear Cage Construction

## ROOF - 5" THICK TRUSS STYLE ALUMINUM FRAME CONSTRUCTION

- 1 TPO Roof with 12 Year Manufacturer's Warranty
- 2 Luan Wood Backer
- 3 Tubular Aluminum Welded Framed Roof
- 4 High Density Structural Foam
- 5 Decorative Ceiling Finish
- 6 13,500 BTU Roof Ducted A/C
- 7 A/C Ducting System with Taped Seams

## FLOOR - FULLY LAMINATED WELDED ALUMINUM FRAME CONSTRUCTION

- 1 Residential Carpeting in Slide Room
- 2 Beauflor Flooring - 10 Year Warranty
- 3 Dual Layers of Floor Decking
- 4 Tubular Welded Aluminum Framed Floor
- 5 High Density Structural Foam
- 6 Polypropylene Waterproof Vapor Barrier

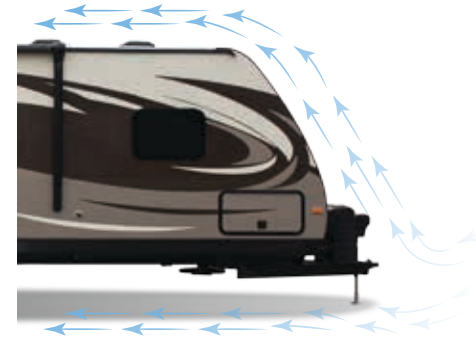
## CHASSIS - STEEL I-BEAM POWDER COATED CHASSIS

- 1 Folding Entry Steps
- 2 Four Corner Stabilizer Jacks
- 3 Large Heated Tanks Mounted Below Floor
- 4 "Polar Package" Enclosed and Heated Underbelly (N/A Express)
- 5 Radial Tires
- 6 Easy-Lube Hubs
- 7 LP Tanks with ABS Cover

## WALLS - FULLY LAMINATED, WELDED ALUMINUM FRAME CONSTRUCTION

- 1 High Gloss Fiberglass Exterior
- 2 Luan Wood Backer
- 3 Tubular Aluminum Welded Frame Walls
- 4 High Density Structural Foam Insulation
- 5 Decorative Wall Finish
- 6 Tinted Safety Glass Windows
- 7 Insulated Baggage Doors with Slam Latches (N/A Express)
- 8 TPO Fender Skirts
- 9 XL-Folding Entry Assist Handle (N/A Express)
- 10 Aerodynamic Front Profile for Better Fuel Economy
- 11 Diamond Plate Rock Guard
- 12 Adjustable Power Awning

## Ultra-Lite Design Means Better Fuel Economy



## Aerodynamic Profile

Kodiak is specifically designed to be towed by most light trucks and sport utility vehicles. The aerodynamic profile pushes air up the front wall and over the roof, improving towing ease and fuel economy.



5-Way Lamination

6-Way WELDED ALUMINUM Super Structure

R11 Roof & Floor  
R7 Walls

## ENCLOSED & HEATED UNDERBELLY

Kodiak's enclosed and heated underbelly prevents water tanks from freezing, and protects the tanks and floor from road damage.



## Real Weights!

Did you know that every unit is weighed as it leaves the production line? Our certified Acu-Weight even includes options!

Most competitors publish only a base weight that doesn't include options.

Make sure that you know what the *real weight* is before you buy your next ultra-lite.



300BHSL, Bunkhouse



300BHSL, shown in Pearl Decor



300BHSL, Bunkhouse Bed & Storage



300BHSL, Bunkhouse Wardrobe

Kodiak's custom cabinetry increases storage by over 40%! Overhead cabinets are wider, taller & deeper. Solid surface countertop, stainless appliances, stainless sink w/pullout faucet, deep storage drawers, dedicated pots & pans storage, plus full-extension steel roller ball bearing drawer guides are standard!



300BHSL Bedroom Wardrobe



300BHSL Kitchen Pantry



300BHSL Island Pantry

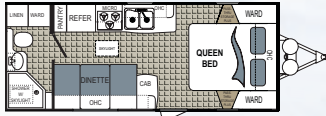


300BHSL, shown in Pearl Decor

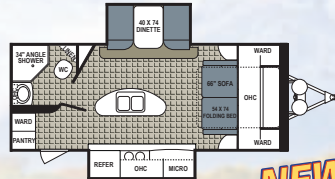
# KODIAK

## Travel Trailers

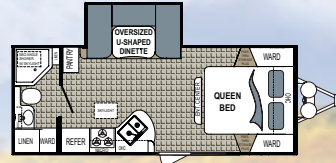
\* Fresh water capacity includes water heater



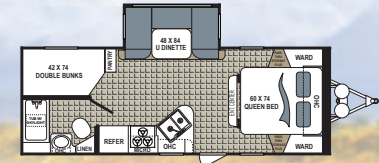
**200QB**  
 Unloaded Weight ... 3,879 Width ..... .8'  
 Cargo Capacity ... 1,521 Fresh Water ..... 52  
 Hitch ..... .310 Waste Water ..... 28  
 Length ..... 24' 2" Grey Water ..... 39  
 Height ..... 10' Furnace Size (BTUs) 19,000



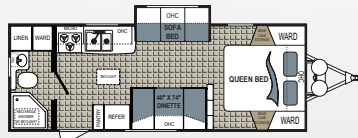
**220RBSL**  
 Unloaded Weight ... 5,105 Width ..... .8'  
 Cargo Capacity ... 2,495 Fresh Water ..... 52  
 Hitch ..... .510 Waste Water ..... 28  
 Length ..... 24' 6" Grey Water ..... 39  
 Height ..... 10' 10" Furnace Size (BTUs) 19,000



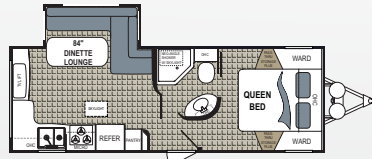
**221RBSL**  
 Unloaded Weight ... 4,575 Width ..... .8'  
 Cargo Capacity ... 1,425 Fresh Water ..... 52  
 Hitch ..... .549 Waste Water ..... 28  
 Length ..... 24' 8" Grey Water ..... 39  
 Height ..... 10' 7" Furnace Size (BTUs) 19,000



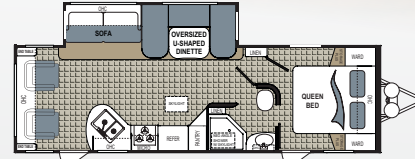
**240BHSL**  
 Unloaded Weight ... 4,992 Width ..... .8'  
 Cargo Capacity ... 1,608 Fresh Water ..... 52  
 Hitch ..... .599 Waste Water ..... 28  
 Length ..... 26' 11" Grey Water ..... 39  
 Height ..... 10' 10" Furnace Size (BTUs) 30,000



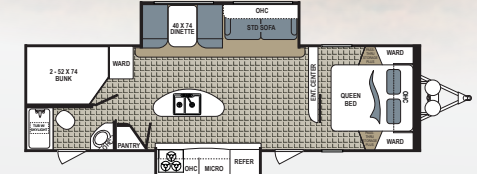
**241RBSL**  
 Unloaded Weight ... 4,458 Width ..... .8'  
 Cargo Capacity ... 1,542 Fresh Water ..... 52  
 Hitch ..... .446 Waste Water ..... 28  
 Length ..... 27' 2" Grey Water ..... 39  
 Height ..... 10' Furnace Size (BTUs) 19,000



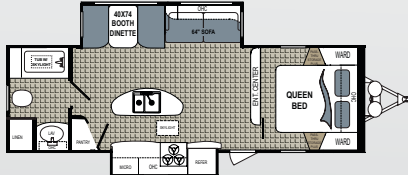
**242RESL**  
 Unloaded Weight ... 5,027 Width ..... .8'  
 Cargo Capacity ... 1,573 Fresh Water ..... 52  
 Hitch ..... .503 Waste Water ..... 22  
 Length ..... 27' 7" Grey Water ..... 39  
 Height ..... 10' 7" Furnace Size (BTUs) 30,000



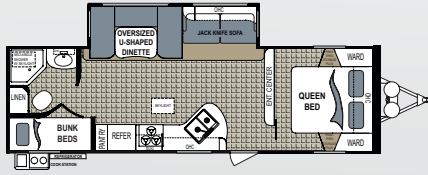
**263RLSL**  
 Unloaded Weight ... 5,806 Width ..... .8'  
 Cargo Capacity ... 1,794 Fresh Water ..... 52  
 Hitch ..... .697 Waste Water ..... 28  
 Length ..... 31' Grey Water ..... 39  
 Height ..... 10' 7" Furnace Size (BTUs) 30,000



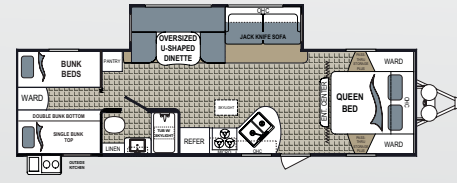
**276BHSL**  
 Unloaded Weight ... 6,441 Width ..... .8'  
 Cargo Capacity ... 1,159 Fresh Water ..... 52  
 Hitch ..... .599 Waste Water ..... 28  
 Length ..... 33' 8" Grey Water ..... 67  
 Height ..... 10' 11" Furnace Size (BTUs) 30,000



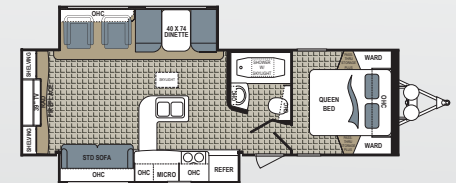
**279RBSL**  
 Unloaded Weight ... 5,997 Width ..... .8'  
 Cargo Capacity ... 1,603 Fresh Water ..... 52  
 Hitch ..... .780 Waste Water ..... 28  
 Length ..... 30' 8" Grey Water ..... 67  
 Height ..... 10' 10" Furnace Size (BTUs) 30,000



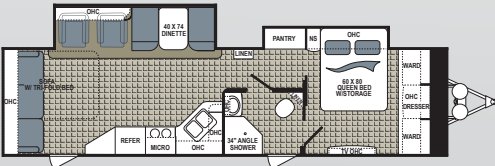
**284BHSL**  
 Unloaded Weight ... 5,910 Width ..... .8'  
 Cargo Capacity ... 1,690 Fresh Water ..... 52  
 Hitch ..... .709 Waste Water ..... 28  
 Length ..... 31' 10" Grey Water ..... 39  
 Height ..... 10' 7" Furnace Size (BTUs) 30,000



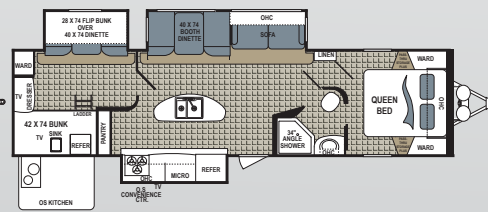
**290BHSL**  
 Unloaded Weight ... 6,005 Width ..... .8'  
 Cargo Capacity ... 1,595 Fresh Water ..... 52  
 Hitch ..... .781 Waste Water ..... 22  
 Length ..... 33' 4" Grey Water ..... 39  
 Height ..... 10' 7" Furnace Size (BTUs) 30,000



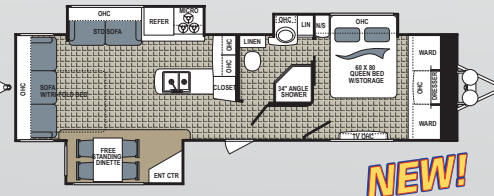
**291RESL**  
 Unloaded Weight ... 6,517 Width ..... .8'  
 Cargo Capacity ... 2,383 Fresh Water ..... 52  
 Hitch ..... .717 Waste Water ..... 28  
 Length ..... 32' 4" Grey Water ..... 56  
 Height ..... 11' 1" Furnace Size (BTUs) 30,000



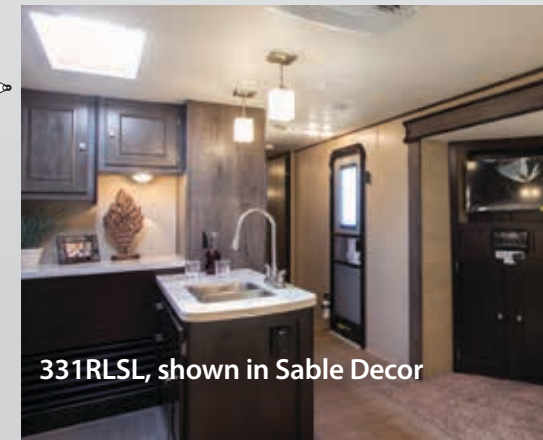
**298RLSL**  
 Unloaded Weight ... 7,124 Width ..... .8'  
 Cargo Capacity ... 2,556 Fresh Water ..... 52  
 Hitch ..... .897 Waste Water ..... 28  
 Length ..... 36' 10" Grey Water ..... 39  
 Height ..... 11' Furnace Size (BTUs) 30,000



**300BHSL**  
 Unloaded Weight ... 7,318 Width ..... .8'  
 Cargo Capacity ... 1,582 Fresh Water ..... 52  
 Hitch ..... .805 Waste Water ..... 28  
 Length ..... 36' 11" Grey Water ..... 67  
 Height ..... 10' 11" Furnace Size (BTUs) 30,000



**331RLSL**  
 Unloaded Weight ... TBD Width ..... TBD  
 Cargo Capacity ... TBD Fresh Water ..... TBD  
 Hitch ..... TBD Waste Water ..... TBD  
 Length ..... TBD Grey Water ..... TBD  
 Height ..... TBD Furnace Size (BTUs) .. TBD



331RLSL, shown in Sable Decor

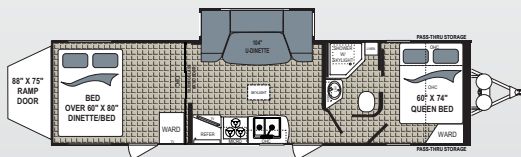


299BHSL, shown in Rullio Decor



172E, shown in Peppercorn Decor

## Toy Hauler



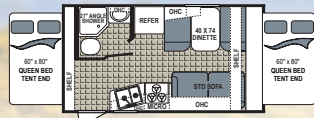
### 292TQB Toy Hauler

Unloaded Weight ... 6,669 Width .....8'  
 Cargo Capacity ..... 3,011 Fresh Water .....52  
 Hitch ..... 1,000 Waste Water .....28  
 Length .....35' 6 Grey Water .....67  
 Height ..... 11' Furnace Size (BTUs) 30,000

Disclaimer: Features, floorplans and specifications are subject to change without notice. Our weights represent how most units are built, inclusive of many commonly-ordered options.

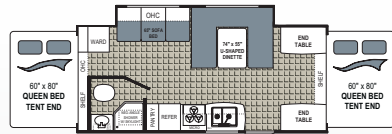
## Express, Expandables & Toy Hauler

\* Fresh water capacity includes water heater



### 172E

Unloaded Weight ... 3,161 Width .....8'  
 Cargo Capacity ..... 1,689 Fresh Water .....52  
 Hitch .....284 Waste Water .....28  
 Height ..... 10' Grey Water .....39  
 Length ..... 18' 6" Furnace Size (BTUs) 19,000



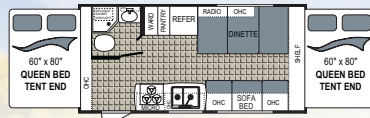
### 216ES

Unloaded Weight ... 4,182 Width .....8'  
 Cargo Capacity ..... 1,318 Fresh Water .....52  
 Hitch .....460 Waste Water .....28  
 Height ..... 9' 10" Grey Water .....39  
 Length ..... 23' 8" Furnace Size (BTUs) 19,000



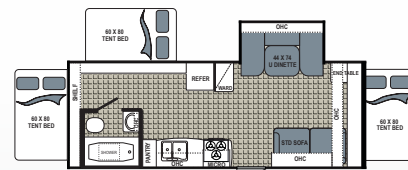
### 283BHSL

Unloaded Weight ... 5,408 Width .....8'  
 Cargo Capacity ..... 1,192 Fresh Water .....52  
 Hitch .....757 Waste Water .....28  
 Height ..... 10' 7" Grey Water .....39  
 Length ..... 32' Furnace Size (BTUs) 30,000



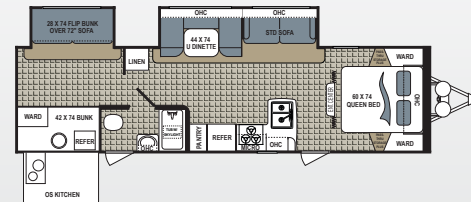
### 186E

Unloaded Weight ... 3,567 Width .....8'  
 Cargo Capacity ..... 1,433 Fresh Water .....52  
 Hitch .....357 Waste Water .....28  
 Height ..... 9' 10" Grey Water .....39  
 Length ..... 20' 5" Furnace Size (BTUs) 19,000



### 222ES

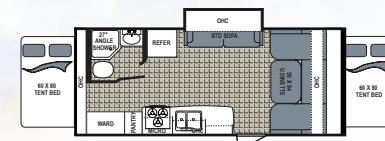
Unloaded Weight ... TBD Width ..... TBD  
 Cargo Capacity ..... TBD Fresh Water ..... TBD  
 Hitch ..... TBD Waste Water ..... TBD  
 Length ..... TBD Grey Water ..... TBD  
 Height ..... TBD Furnace Size (BTUs) .. TBD



### 299BHSL

Unloaded Weight ... 6,347 Width .....8'  
 Cargo Capacity ..... 1,253 Fresh Water .....52  
 Hitch .....762 Waste Water .....28  
 Height ..... 10' 9" Grey Water .....39  
 Length .....34' 10" Furnace Size (BTUs) 30,000

# KODIAK EXPRESS



### 206ES

Unloaded Weight ... TBD Width ..... TBD  
 Cargo Capacity ..... TBD Fresh Water ..... TBD  
 Hitch ..... TBD Waste Water ..... TBD  
 Length ..... TBD Grey Water ..... TBD  
 Height ..... TBD Furnace Size (BTUs) .. TBD

**NEW!**

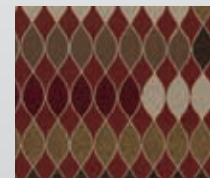


### 255BHSL

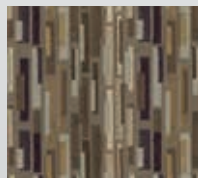
Unloaded Weight ... 4,855 Width .....8'  
 Cargo Capacity ..... 1,745 Fresh Water .....52  
 Hitch .....534 Waste Water .....28  
 Height ..... 10' 5" Grey Water .....39  
 Length ..... 28' 4" Furnace Size (BTUs) 19,000

**NEW!**

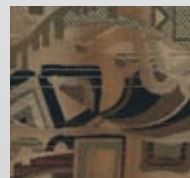
## KODIAK EXPRESS Decor Choices



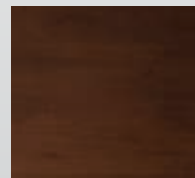
Buckshot



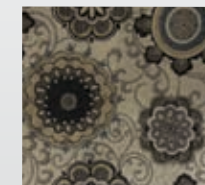
Rullio



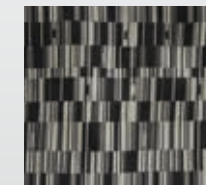
Peppercorn



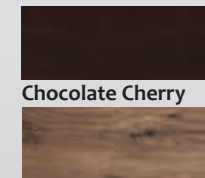
Maple Cherry



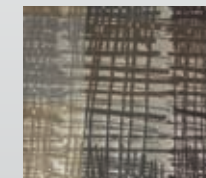
Mineral



Sable



Chocolate Cherry



Driftwood Gray

Pearl

# KODIAK

## TRAVEL TRAILERS, EXPRESS, EXPANDABLES & TOY HAULER STANDARD & OPTIONAL FEATURES

EXTERIOR FEATURES	Express	Expandables	Kodiak
Aluminum Rims	STD	STD	STD
EZ Lube® Axles	STD	STD	STD
Spare Tire/Carrier/Cover	STD, No Cover	STD, No Cover	STD, w/Cover
Diamond Plate	STD	STD	STD
Enclosed Underbelly	STD	STD	STD
Tinted Safety Glass Windows	STD	STD	STD
Frameless Windows	STD	STD	STD
Outside Speakers	STD	STD	STD
Hitch Light	N/A	N/A	STD
Patio Light	STD	STD	STD
Bedroom Roof Vent	N/A	N/A	STD
Stabilizer Jacks	STD	STD	STD
Electric Awning	STD	STD	STD
Black Tank Flush	N/A	N/A	STD
LP Cover	STD	STD	STD
20 LB LP Bottles	STD	STD	STD
Pack-N-Play	N/A	N/A	STD on Select Models
Exterior Spray Port	N/A	N/A	STD
LP Quick Disconnect	STD	STD	STD
Exterior Pullout 2-Burner Cooktop	STD on Select Models	N/A	STD on Select Models
Extended Downspouts	STD	STD	STD
TV Antenna	STD	STD	STD
Deluxe Folding Entry Assist Handle	N/A	N/A	STD
Exterior Grab Handle	STD	STD	N/A
Double or Triple Entry Step	STD	STD	STD
Slam Latch Baggage Doors	N/A	N/A	STD
Baggage Doors	STD	STD where Applicable	N/A
Graphics Package	STD	STD	STD
Upgraded Bunk Mats	STD	STD	STD
Radial Tires	STD	STD	STD
Window in Door	N/A	N/A	STD
Tri-Chromatic Fiberglass	N/A	N/A	STD
White Fiberglass	STD	STD	N/A

INTERIOR FEATURES	Express	Expandables	Kodiak
Beaufort® Flooring	STD	STD	STD
Nightshades Throughout	STD	STD	STD
Flip Sofa	STD	STD	STD
Bath Skylight	STD	STD	STD
Tub Surround	STD	STD	STD
Medicine Cabinet w/Mirror	STD	STD	STD
12V Bath Exhaust Fan	STD	STD	STD
Under Bed Storage	STD	STD	STD
3-Burner Range w/Oven	STD	STD	STD
Rangehood w/12V Fan/Light	STD	STD	STD
6 GAL Gas/Electric/DSI Water Heater	STD	STD	STD
Bluetooth AM/FM/DVD Stereo	N/A	N/A	STD
AM/FM/CD Stereo	STD	STD	NA
Cable TV Hookup w/Booster	STD	STD	STD
Bedroom TV Hookup w/LCD Backer	STD	N/A	STD
Microwave	STD	STD	STD
13,500 BTU Non Ducted A/C	N/A	STD	N/A
13,500 BTU Ducted A/C	STD	N/A	STD
6 CU FT Double-Door Refer	STD	STD	STD
Black Refer Insert	STD	STD	N/A
Stainless Steel Refer Insert	N/A	N/A	STD
Porcelain Foot Flush Toilet	STD	STD	STD
Sink Cover	N/A	N/A	STD
Solid Surface Countertop	N/A	N/A	STD
Formica Countertop	STD	STD	N/A
Peppercorn/Rulio/Buckshot Décor	STD	STD	N/A
Mineral/Pearl/Sable Décor	N/A	N/A	STD
Maple Cherry-Glazed Cabinets	STD	STD	N/A
Driftwood Gray-Glazed Cabinets	N/A	N/A	STD
Hard Door Bedroom Separation	N/A	N/A	STD/ where Applicable
Soft Curtain Bedroom Separation	STD	STD	N/A
Schwintech® Slide System	STD	STD	Apply when Available

OPTIONS	Express	Expandables	Kodiak
19" LED TV / 26" LED TV/32" LED/39" LED	N/A	N/A	OPT
15,000 BTU A/C	OPT	OPT	OPT
Tri-Fold Sofa	N/A	N/A	OPT
Table & Chairs	N/A	N/A	OPT
Outside BBQ Grill	N/A	N/A	OPT
Electric Tongue Jack	N/A	N/A	OPT



Kodiak 300BHSL Outside Kitchen



Kodiak 300BHSL Pass-thru Storage



Kodiak 291RESL Optional Power Awning w/LED Lights

Your Local Dealer



# KODIAK

www.Dutchmen.com



Scan our quick response code to open our website, and explore the many products we have to offer!

Disclaimer: Product information is as accurate as possible as of the date of publication of this brochure. Features, floorplans and specifications are subject to change without notice. Please also consult our website for more current product information and specifications.

Tow Vehicle Disclaimer CAUTION: Owners of Dutchmen Manufacturing, Inc., recreational vehicles are solely responsible for the selection and proper use of tow vehicles. All customers should consult with a motor vehicle manufacturer or their dealer concerning the purchase and use of suitable tow vehicles for Dutchmen products. Dutchmen disclaims any liability or damages suffered as a result of the selection, operation, use or misuse of a tow vehicle. Dutchmen's limited warranty does not cover damage to the recreational vehicle or the tow vehicle as a result of the selection, operation, use or misuse of the tow vehicle.

P.O. BOX 2164 • 2164 Caragana Court • Goshen, Indiana 46527  
Sales: 574.537.0600 • Fax: 574.975.6274



Check us out on Facebook!