

SOUTHWIND®

SOUTHWIND



2015

CLASS A GAS



Southwind carries you on life's greatest adventures



Your travels may take you far, but always by your side, providing all the comfort, convenience and style you desire, is Southwind. No matter where you roam, Southwind will call you home.

Bounder Top Features

- Sony® A/V Electronics
- Sony® LED TVs
- Blu-ray® Surround Sound System (Optional)
- LED Lighting
- Composite Tile Flooring Throughout
- Exterior Entertainment Center (Optional - Select Models)
- One-Piece Panoramic Windshield
- 7' Interior Ceiling Height
- Soft-Touch Vinyl Ceiling
- 22.5" Aluminum Wheels
- Power Platform® Chassis Construction
- 4-Point Auto Hydraulic Leveling Jacks
- Automotive Dash w/Passenger Workstation

BOUNDER 34T SHOWN IN PEWTER MIST DÉCOR WITH CINNABAR WOOD CABINETRY

Go to FleetwoodRV.com and build your own Southwind!



Champagne Shimmer



Pewter Mist



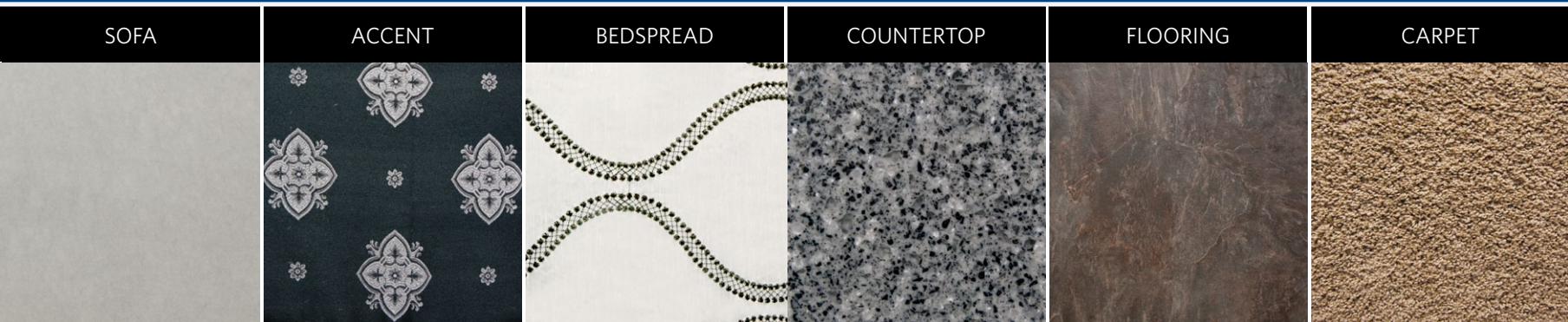
Sandstone Mist

Both inside and out, there is a wide selection of colors, styles and finishes. From the moment you lay your eyes on an Southwind, the high-style graphics and décor collection welcome you with gracious beauty and contemporary design. We've paid attention to every detail. So wherever you are, you'll feel right at home.

CARAMEL KISS



WINTERHAVEN



CABINETS

CINNABAR



SPICE



INTERIOR THROUGHOUT

- 10-Gallon Quick Recovery Water Heater w/Direct Spark Ignition (Gas/Electric)
- 20,000/30,000 Btu/h Dual Furnaces
- 34,000 Btu/h Furnace (32VS)
- Complete PEX Plumbing System
- Deluxe Roller Bearing, Full-Extension Drawer Guides & Transit-Ship Locks
- Demand Water Pump w/Filter
- Dual Roof A/C High-Efficiency w/Solar Panel, Chill Grills & Bedroom Heat Pump
- Soft Touch Vinyl Ceiling,
- Composite Tile Flooring Throughout
- Full HD Video System
- Water Heater Bypass
- Whole Coach Water Filtration System
- 7" Interior Ceiling Height
- LED Lighting
- LG Solid-Surface Countertops
- 1,200-Watt Inverter

Optional

- Neutral Loss Protection
- Auto-Locating Satellite Dish
- Blu-ray® Home Theater Sound System
- Day/Night Double-Roller Shades

DRIVER CONVENIENCE

- 3-Point Seat Belts at Driver & Front Passenger Seats
- AM/FM Radio w/CD Player, Satellite Radio- Ready w/Auxiliary Inputs
- Auto A/C Heater Combo
- Auxiliary Start Circuit
- Soft-Touch Automotive Dash
- Computer Workstation In-Dash
- Manual Roller shades at Driver/ Passenger Window
- Cruise Control
- Dash Fans
- Power Front Windshield Shade
- Engine Cover Convenience Tray
- Intermittent Wiper Control
- Radio Switch Main/Auxiliary Power
- Tilt Steering Wheel
- Battery Disconnect System
- Driver/Front Passenger - Faux Leather Seats Captain's Chairs w/Power Driver Seat

GALLEY

- Sharp® Convection Stainless Steel Microwave Oven
- 3-Burner, High-Output Cooktop
- 12 cu.ft. 4-Door Refrigerator w/Icemaker
- Brushed-Nickel Finish Cabinet Hardware
- Double-Bowl Stainless Steel Sink
- Fan-Tastic® Power Roof Vent
- Radius Corner Cabinetry
- Range Cover Flush Mount
- Single-Lever Faucet w/Sprayer
- Sink Cover/Cutting Board
- Solid-Surface Countertops
- Decorative Backsplash
- Wastebasket
- Slide-Out Dinette Bins w/Latches

Optional

- Free-Standing Dinette w/Credenza (32VS, 34A)
- 3 Burner, High-Output Cooktop w/Oven

LIVING ROOM

- 40" LED HDTV (34A, 36L)
- DVD Home Theater Sound System
- Day/Night Pleated Shades
- Free-Standing Euro Chair w/Ottoman (Select Models)
- Residential Seat Styling
- Sofa Bed w/Air Mattress
- Facing Dinette
- Sofa Sleeper w/Air Mattress & Footrest (32VS)
- 40" LED Mid-Ship TV (32VS)
- 32" Front Overhead LED HDTV
- Free-Standing Recliner (Select Models)
- Dual Monitors

Optional

- Washer/Dryer (36L)

BEDROOM

- 22" LCD HDTV (32VS)
- 32" LED HDTV (34A, 36L)
- Bedsprad w/Décor Pillows
- Headboard
- Pleated Shades
- Rear Speakers

Optional

- Queen Bed Air Mattress
- Washer/Dryer (36L)

BATHROOM

- Porcelain Lavy Sink
- Lavy Faucet
- Fan-Tastic® Power Roof Vent
- Molded Tub/Shower Enclosure
- Porcelain Toilet w/Water Saver
- Toilet Tank San-T-Flush™ System

SAFETY/CONVENIENCE (INTERIOR)

- Carbon Monoxide Detector/Alarm
- Entry Assist Handle
- Multiple Seatbelt Locations
- Propane Detector/Alarm
- Smoke Detector/Alarm
- 10 ABC Fire Extinguisher

EXTERIOR THROUGHOUT

- 120V/12V AC/DC Converter
- Central Electrical Panel
- 2 Graphic Color Choices
- 3-Way Water Pump Switch
- 5.5 kW Onan® MicroQuiet Generator
- 50 Amp Service
- Aluminum Tube Front Grill
- Awning Rail/Drip Molding (Both Sides)
- Dual-Pane Windows w/Screens
- Dual Patio Receptacles
- Fiberglass Front/Rear Caps
- Full-Body Paint
- Halogen Headlights
- Heated Water & Holding Tank Compartments
- One-Piece Panoramic Windshield
- Mud Flaps
- Park Cable Receptacle
- Patio Awning - Electric
- Single-Motor Windshield Wipers w/Wet Arm
- Slide Topper Awnings
- TV Antenna w/Signal Booster
- Molded Front Quarter Panels

Optional

- CSA Package (Canadian Specs)**
- Protective Front Mask
- Exterior Entertainment Center (34A, 36L)
- Rear Ladder

AUTOMOTIVE

- 4-Point Automatic Levelers
- Trailer Hitch w/7-Pin Electrical Hook-Up
- Ford® Chassis w/6.8L Triton® V10 Engine

SAFETY/CONVENIENCE (EXTERIOR)

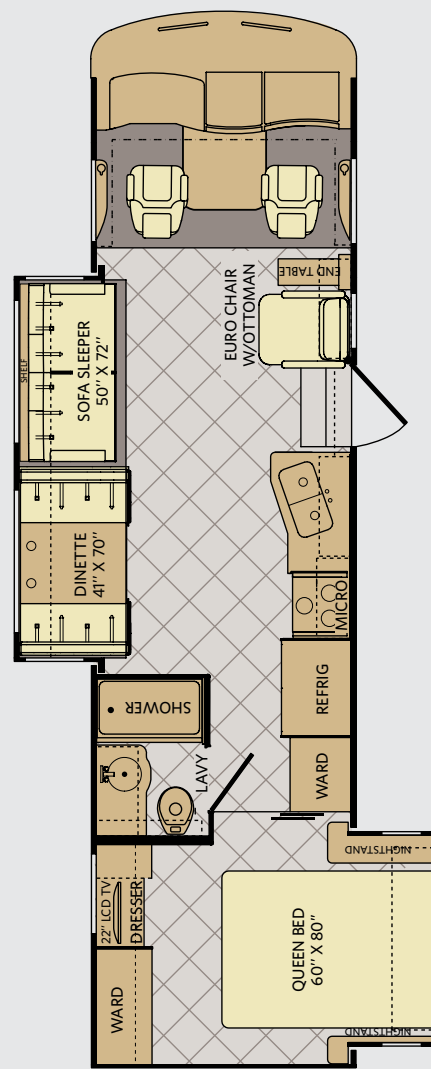
- Automotive Safety Glass
- Daytime Running Lights
- Hydraulic 4-Wheel Disk Brakes w/4-Wheel Anti-Lock Brakes
- Large, Heated Remote Rear-View Mirrors w/Side-View Cameras
- Porch Light (Doorside)
- Power Entry Step
- Color Rear-Vision Camera w/One-Way Audio
- Roof Ladder - *Optional*
- Underhood Utility Lights
- Utility Compartment w/Exterior Shower
- Winterizing Pick-Up Tube
- Lighted Entry Assist Handle

STORAGE

- Continuous One-Piece Compartment Bulb Seal
- Gas Lift Strut Supports (Select Locations)
- Side Swinging Luggage Doors (Select Locations)
- Pass-Through Storage (Select Models)
- Large Lighted Roto-Molded Polyethylene, Luggage Doors

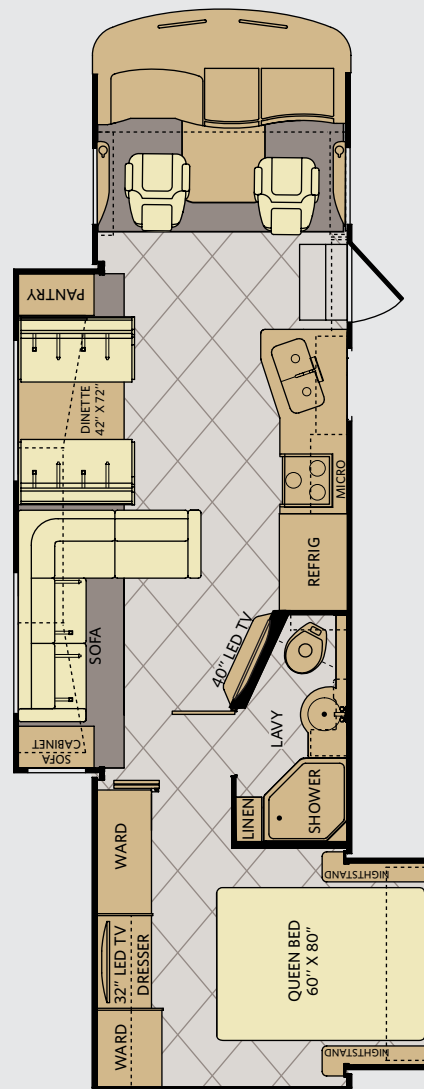
BODY STRUCTURE

- Aluminum Interlocking Floor/Wall/Ceiling Framing
- Basement Floor Configuration
- Power Platform™ Construction (Fleetwood Exclusive)
- Radius Roof w/Ducted A/C
- Vacu-Bond® Upper/Lower Floors
- Vacu-Bond® Walls w/Smooth, High-Gloss Exterior Fiberglass



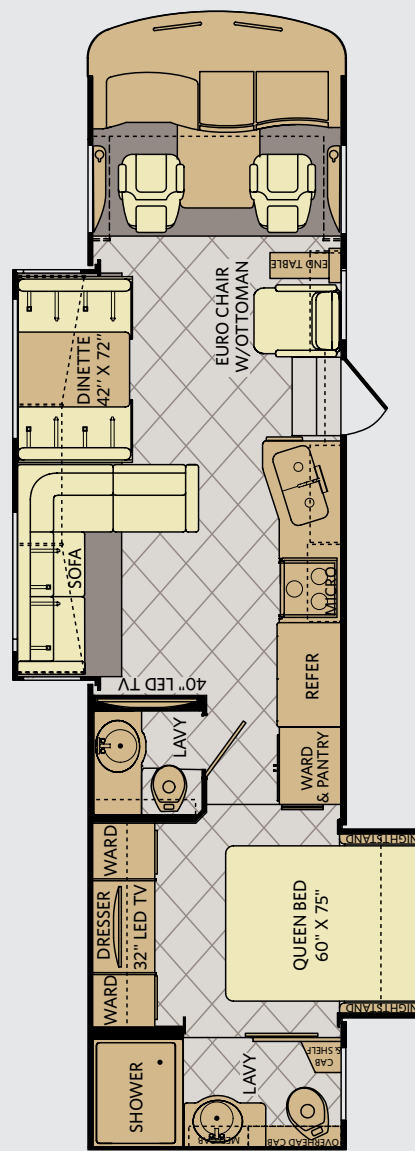
32VS

AVAILABLE OPTIONS: 087, 113, 192, 345, 490, 830, 833, 855



34A

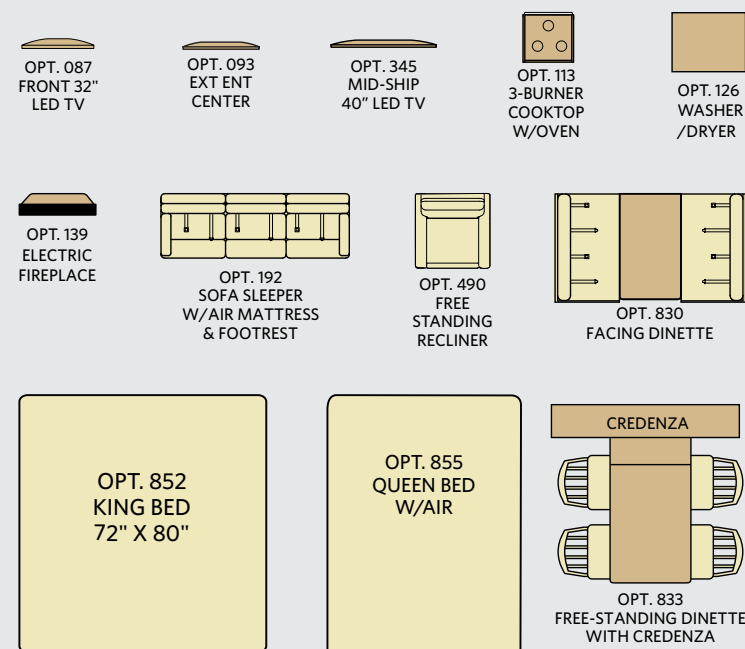
AVAILABLE OPTIONS: 087, 093, 113, 126, 139, 830, 833, 852, 855



36L

AVAILABLE OPTIONS: 087, 093, 113, 126, 490, 830, 855

FLOOR PLAN OPTIONS



DISCLAIMERS

- GVWR (Gross Vehicle Weight Rating) is the maximum permissible weight of this fully loaded motor home. The GVWR is equal to or greater than the sum of the (UVW) unloaded vehicle weight plus the (OCCC) occupant cargo-carrying capacity.
 - GAWR (Gross Axle Weight Rating) is the maximum permissible loaded weight a specific axle is designed to carry.
 - GCWR (Gross Combined Weight Rating) is the value specified by the motor home manufacturer as the maximum allowable weight of this motor home with its towed vehicle. Towing and braking capacities may be different. Refer to Fleetwood and chassis manufacturer's manuals for complete information.
 - Length measured from front bumper to rear bumper (excludes accessories).
 - Excludes safety equipment and awnings.
 - Motor homes feature a body width over 96" which will restrict your access to certain roads. Before purchasing, you should research any state and/or province road laws which may affect your usage.
 - Tank manufacturer's listed water capacity (WC). Actual propane capacity is 80% of water listing as required by the safety code.
- † The chassis manufacturer recommends the installation of a supplemental brake control system to activate the brakes on the vehicle or trailer you are towing. Hitch receiver ratings expressed are maximum for the hitch receiver installed and may require the purchase of additional equipment that is dependent on the weight of the towed load. Consult with hitch receiver manufacturer for further information.
- * UVW and OCCC are found on the label containing the federal certification tag in each RV.

CHASSIS

MODELS	32VS	34A	36L
Wheelbase (inches)	208"	28"	228"
GVWR (lbs) ¹	22,000	22,000	22,000
Front GAWR (lbs) ²	8,000	8,000	8,000
Rear GAWR (lbs) ²	15,000	15,000	15,000
GCWR (lbs) ³	26,000	26,000	26,000
Hitch Rating Weight (lbs) [†]	5,000	5,000	5,000
Tongue Weight (lbs) [†]	500	500	500
Fuel Capacity (gal)	80	80	80

POWER PLATFORM® CHASSIS

Model: Ford®
Engine: 6.8L Triton V10
Transmission: Ford®, 5-Speed, Automatic w/Overdrive

Alternator: 175 Amp
Torque: 457 lb-ft @ 3,250 RPM
Horsepower: 362HP

DIMENSIONS & CAPACITIES

MODELS	32VS	34A	36L
Overall Length (inches) ⁴	33' 5"	34' 11"	36' 11"
Overall Height (with A/C)	12' 10"	12' 10"	12' 10"
Overall Width (maximum) ^{5, 6}	102"	102"	102"
Interior Height (maximum)	84"	84"	84"
Interior Width (maximum)	96"	96"	96"
Pation Awning Width	17'	17'	17'
Interior Storage (cu. ft.)	144	123	140
Exterior Storage (cu. ft.)	112	115	118
Fresh Water Holding Tank (gal)	86	86	86
Grey Water Holding Tank (gal)	58	58	58
Black Water Holding Tank (gal)	42	42	42
Appliance Propane Tank (gal) (WC) ⁷	25	25	25
Water Heater Tank (gal)	10	10	10



WHY FLEETWOOD?



Quality

There's no cutting corners. Skilled craftsmen build every Fleetwood RV for maximum durability and longevity.



Trust

More people trust Fleetwood RV. After all, we've spent over 60 years perfecting RVs, earning the loyalty of generations of RVers.



Passion

We're truly passionate about the RV lifestyle. Fleetwood RV was founded by RV enthusiasts, and that tradition continues today.



Safety

You've got precious cargo. So we've engineered dozens of innovative safety features into our motor homes to give you more peace of mind.



Service

Help is nearby with 24/7 emergency roadside assistance through **Coach-Net**.SM And when you need an upgrade or repair, you'll find Fleetwood RV dealers all across North America ready to assist you.



Warranty

Exclusive RV ownercare warranty.
See your Fleetwood RV dealer for details.

**All 2015 Fleetwood RV motorhomes include a 1-year emergency roadside assistance membership. For complete info, see your Fleetwood RV dealer.



Visit FleetwoodRV.com or find FleetwoodRV tablet apps in the App Store and Google Play.

RV OWNERCARE**

Limited one-year/15,000-mile coach warranty and three-year/45,000-mile structural warranty, whichever occurs first, and it is fully transferable for the first 12 months. RV OWNERCARE is one of the RV industry's most comprehensive programs and includes systems, appliances, components and construction, with no deductible and no service charge. RV OWNERCARE coverage is provided by a company that will be around in the future to service your needs. See your nearest Fleetwood RV dealer for a full explanation of benefits and restrictions.

CONTACT US

To locate a dealer near you, visit our website at www.fleetwoodrv.com or call 1-800-322-8216. We can also be contacted at Fleetwood RV Customer Relations, P.O. Box 1007, Decatur, IN 46733.

FLEETWOOD RV MOTOR HOME CLUBS

As a Fleetwood RV owner, you're invited to become a member of several Fleetwood RV motor home clubs. Becoming a club member is the perfect way to meet other Fleetwood owners who love to travel across America and share in the RV lifestyle. Visit our website at www.fleetwoodrv.com/owners_clubs to learn more and join the fun.

IMPORTANT—PLEASE READ: Product information, photography and illustrations included in this publication were as accurate as possible at the time of printing. For further product information and changes, please visit our website at www.fleetwoodrv.com or contact your local Fleetwood RV dealer. Prices, materials, design and specifications are subject to change without notice. All weights, fuel, liquid capacities and dimensions are approximate. Fleetwood RV has designed its recreational vehicles to provide a variety of uses for its customers. Each vehicle features optimal seating, sleeping, storage and fluid capacities. The user is responsible for selecting the proper combination of loads (i.e., occupants, equipment, fluids, cargo, etc.) to ensure that the vehicle's capacities are not exceeded.

YOUR LOCAL FLEETWOOD RV DEALER IS: