

Discover The Lance Difference





Lance Camper Manufacturing Corporation is proud to announce the celebration of its 50th anniversary with the release of our 2015 models. We are so thankful for our customers, employees, dealers and our supplier partners who together have been providing and purchasing the highest quality and most innovative Truck Campers, Ultra-Light Travel Trailers and our brand new Toy Haulers, available in the market today.

Every year, thousands of customers give us the opportunity to earn their trust and select a Lance in which to spend their precious recreational time.

Although Lance has always been known as the leader in Truck Camper manufacturing, since the introduction of Ultra-Light Travel Trailers in 2009, our trailers have become one of the fastest selling brands. With the addition of our all new Toy Haulers this year, we have demonstrated the ability to stay true to our brand by providing the highest quality product available, as well as a truly "No Compromises", full-featured Toy Hauler.



This year also marks the year we have earned our 12th RV Dealers Association **DSI Quality Circle Award**. This award is given to those RV manufacturers that demonstrate achievement in product quality and dealer service and are best in the industry. We work hard every day to continue to live up to the highest of expectations.

So, as we continue to celebrate our 50th anniversary this year, we are reminded what a milestone this is, and how special it is to share this golden year with other great brands, including the Ford Mustang, the Indy 500, G.I. Joe, the Rolling Stones, the Porsche 911, the Beatles and the Dodge Hemi.

We celebrate not ourselves with this milestone anniversary; rather, we celebrate our relationships with our customers, many of whom over the years have become good friends.

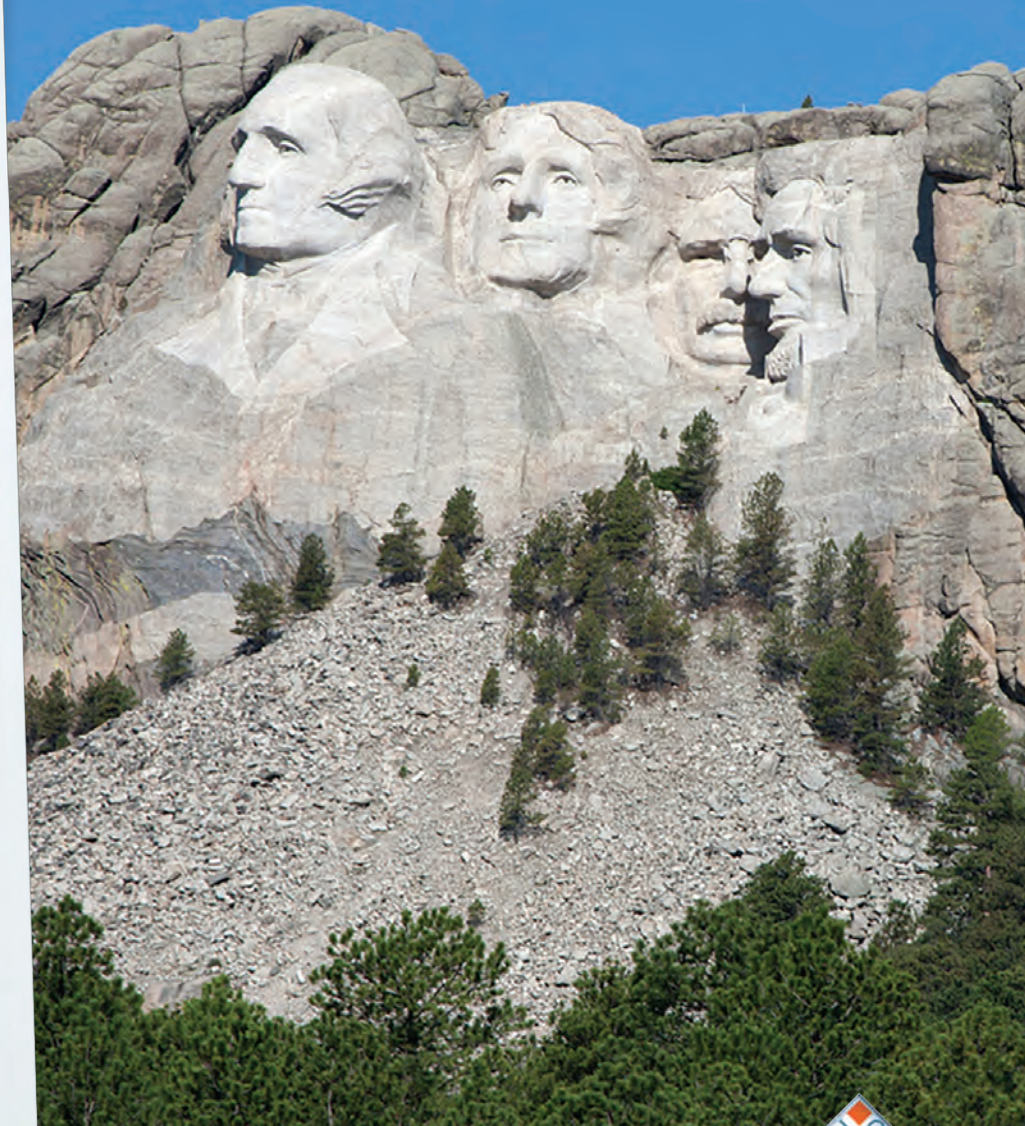
We start with state of the art research and design processes, then select the highest quality components and assemble them in the most advanced automated manufacturing environment in the industry. What will continue to be clear throughout it all is how one thing has never changed: Our dedication to providing our customers the best built RV's in the business.

Thank you to our customers for the confidence you continue to place with us. For those considering a Lance, we invite you to "**Discover The Lance Difference**" for yourself.

Safe Travels,

Jack Cole

President and Chief Executive Officer



4 Seasons Certified All Weather Package

Utilize your trailer all year long remaining comfortable in extreme heat or cold temperatures with the Lance Four Seasons Certified option which includes along with standard dual pane windows and advanced ducted heating; water heater bypass & winterizing valve, insulated hatch covers and ducted heated holding tanks.



Discover The Lance Difference!

When considering the purchase of an RV, it is important to look both above and below the surface. The following key features are just some of what sets Lance above the rest and why our customers become repeat customers and refer their friends to Lance. We encourage you to visit your local Lance dealer and “Discover The Lance Difference” for yourself!



TPO Gravel Guard and Roof

Lance uses the same material utilized on automotive bumpers, TPO, for our front gravel guard. This great looking aerodynamic guard provides protection from road debris, is easy to clean and features integrated hitch lighting and battery tray accommodating up to two group 29 12v batteries or two 6v batteries. On the roof, we use a more flexible TPO that is energy star rated, easy to maintain and allows us to use vents that clamp into place eliminating screws, reducing potential for leaks. Lance TPO roofs also feature a 12 year limited product warranty.



Lite-Ply

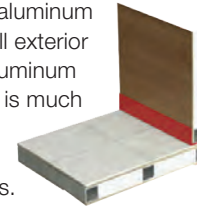
Interiors are constructed using Lite-Ply which Lance imports from Europe. This superior product does cost more, but is both lighter and stronger than other wood products. Incorporating both tongue and groove and dovetail construction, also provides durability and beauty.

Off The Grid Camping

Lance Travel Trailers are built for those who like to get off the beaten path where shore power is not always available. With a 12 volt electrical system and features like LED lighting which uses less energy and available 4 Seasons All Weather Package and roof top solar power panels, you can enjoy your Lance just about anywhere.

LanceLock

Custom interlocking aluminum extrusions connect all exterior panels creating an aluminum “superstructure” that is much stronger and lighter than conventional construction methods.



Ducted Heating

Lance features an advanced ducting system for optimal heat distribution. Unlike most RV manufacturers, Lance spends a lot of time engineering the most efficient ducting routes so your trailer does not have hot or cold spots, resulting in even temperature throughout. As importantly, the holding tanks are included in this system, which is unique to Lance products.

Azdel

Lance uses more expensive Azdel, a modern day composite material, which is formaldehyde free and is lighter, stronger and a more efficient insulator than Luan wood, to virtually eliminate potential for rot and mold.

DSI

For the last decade, Lance has won the prestigious DSI Award (Dealer Satisfaction Index) for quality almost every year.



And when we survey our new customers, we are consistently rated high in Owner Satisfaction with many repeat customers who are our best salespeople, telling their friends about their positive experience with Lance products.



Eco Green

The Lance manufacturing facility is equipped with advanced energy saving features. Large skylights and metered lighting fixtures insure minimal energy use. CNC machines provide most efficient use of materials. Lance products also utilize renewable resources and glues and cleaners that exceed California’s very high standards and result in mercury free campers. Lance is very proud to deliver on the highest commitment to being as Green as possible.

2 YEAR STRUCTURAL LIMITED WARRANTY

In addition to one (1) year Limited Warranty Period, Lance extends the warranty to two (2) years from the date of purchase for the structural integrity of the trailer sidewalls, roof, floor, front wall, rear wall and chassis, giving you extra piece of mind. Please see lancecamper.com/warranty for details.



4 Model 2295 shown in Arrowhead



Model 1995 shown in Palm Springs



Convertible Sofa Bed Option shown in Palm Springs (Select Models)



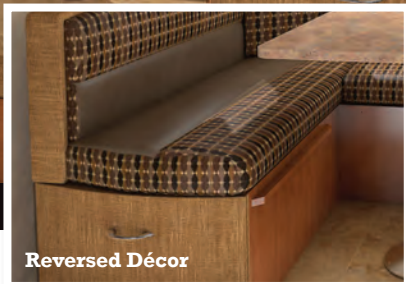
Model 1575 shown in Palm Springs

The Lance Look

Personalize your Lance by selecting from one of three tasteful interiors, assembled by an interior design team to create both stunning and functional Lance interiors. You'll find beautiful woods, wall treatments, and fabric combinations with dinette cushions that feature reversible fabric designs, providing you two different looks with each decor.



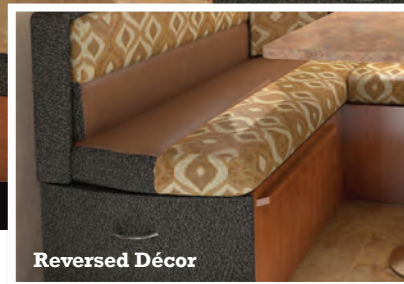
Arrowhead



Reversed Décor



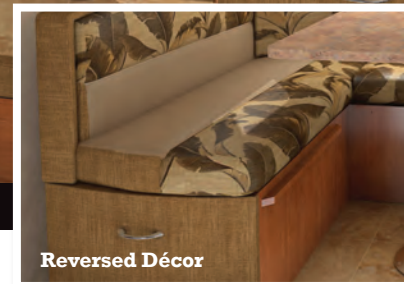
Mohave Dunes



Reversed Décor



Palm Springs



Reversed Décor

Don, Lynne & Darcey (our dog) | Lance 2285



"Every day I say to my husband "I love this trailer". The quality and thoughtful design allow our vacation time to be spent in comfort and enjoyment. In our 17 years of RVing, I have never found a manufacturing service department to be more responsive, capable and caring. We could not be more pleased with our decision to purchase a Lance trailer."

Jim, Lisa & Trooper (our dog) | Lance 1575

Jim and I purchased our Lance 1575 after 6 months of research. The moment we stepped into a Lance product, we knew we had a winner! The many windows and skylights bring the outdoors in and the slide out with wrap around dinette is a huge plus! Inside and out, Lance has maximized every inch of storage and the finish of the entire trailer is top notch! We really love our Lance and have been 100% pleased with its performance. We plan to enjoy our Lance 1575 for many years to come and will continue to build many wonderful memories in this travel trailer. Thanks to Lance for building such a well designed, good-looking product! There really is a "Lance Difference" and we enjoy this special difference on every camping trip!



Selected Standard+Optional Features



Reversible Seat Cushions give you two different designer décor looks.



Full Width Slide Out Storage Bin provides easy access to all your gear in the front compartment.



Aluminum Wheels look great, are lightweight and dissipate heat better.



Black Tank Flush connection makes black tank holding cleaning a breeze.



Bluetooth Compatible audio system makes connecting to your portable devices easy.



U-Shaped Dinette design maximizes space for you and your guests, converts into a bed at night and with windows on all three sides, lets you really enjoy the scenery.



Powered Awning with one touch operation, lateral support arms, wind sensor (awning automatically retracts in windy conditions) and manual over-ride, combine to make awning operation effortless! LED lighting also helps set the mood!

All New Aerodynamic Front Cap design features stunning looks in a wind resistant design. The new tempered, dual pane radius window provides abundant natural light or with standard black out shade, complete darkness, your choice! The color keyed TPO material lower front gravel guard is dent resistant, easy to clean and helps protect your trailer from road debris.



Keyless Entry with Key Fob. Lock and unlock your entry door with a push of a button, just like your automobile.



Outside Kitchen available on the 2295. Enjoy the convenience of outdoor cooking, with a two burner stove, sink, spice & towel racks, slide out counter extension and storage cabinet, all under the protection of your awning and where all the action is!



Easy-Release Spare Tire Carrier makes changing tires quick and easy.



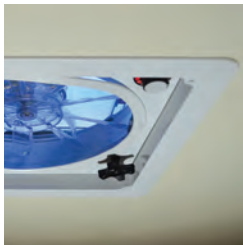
Rear Bunks standard on the 2185 provide additional sleeping accommodations for up to three, bringing total sleeping capacity up to seven.



Battery Rack is integrated into the front gravel guard and built to accommodate up to two group 29 12V batteries or two 6V batteries. The LP cover and electric tongue jack are black, coordinating well with the grey front cap.



Power Stabilizer Jacks get your trailer stabilized on your campsite quickly.



Fan-Tastic Vent provides maximum air circulation and ventilation.



LED Lighting provides great lighting while reducing power demands on the electrical system.



Exterior BBQ Hook-Up makes grilling fast, safe and easy.



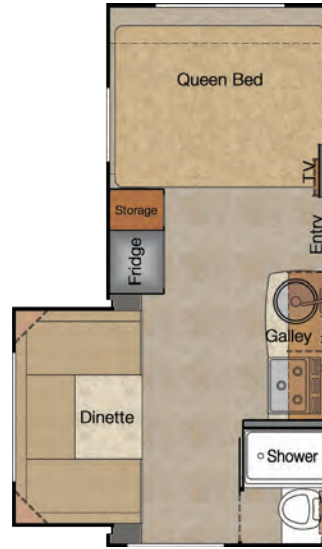
Solar Power Panel recharges your batteries when your camping off the grid.



2-Way Refrigerator allows operation from either propane or 110 volt sources.

Specifications+Standards+Options

	1575	1685	1985	1995	2185	2285	2295
Floor Length	15' 5"	16' 3"	18' 10"	19' 3"	21' 2"	22' 6"	22' 6"
Overall Length	19' 6"	20' 9"	23' 4"	23' 9"	25' 8"	27' 0"	27' 0"
Width (Exterior)	84 3/8"	96 3/8"	96 3/8"	96 3/8"	96 3/8"	96 3/8"	96 3/8"
Height (Interior)	78"	78"	78"	78"	78"	78"	78"
Dry Weight	2700	3650	3780	3855	4210	4425	4440
Hitch Weight	205	345	360	245	590	500	530
Cargo Capacity	1000	1850	1920	1845	1790	1575	1560
GVWR	3700	5500	5700	5700	6000	6000	6000
Fresh Water, Gallons	26	45	45	45	45	45	45
Grey Water, Gallons	26	45	45	45	45	2/45	45
Black Water, Gallons	25	45	45	45	45	45	45
Propane Capacity, Tanks/Gallons	1/5	2/5	2/5	2/5	2/5	2/5	2/5
Sleeping Capacity, Min/Opt Max	4	5	4	4	7	6	4



Model 1575



Model 1685



Model 1985

Exterior

	1575	1685	1985	1995	2185	2285	2295
Laminated Fiberglass Bonded Exterior w/Azdel Substrate	•	•	•	•	•	•	•
TPO Lower Front Gravel Guar w/Hitch Light		•	•	•	•	•	•
Manual Tongue Jack	•	•	•	•	•	•	•
Electric Stabilizer Jacks	0	0	0	0	0	0	0
Electric Tongue Jack	0	0	0	0	0	0	0
Aluminum Wheels w/Radial Tires	•	•	•	•	•	•	•
Spare Tire Carrier	•	•	•	•	•	•	•
Spare Tire	0	0	0	0	0	0	0
Single Aluminum Step	•						
Double Step *2		•	•	•	•	•	•
Radius Slider Tinted Windows (Tempered)	•	•	•	•	•	•	•
Radius Acrylic Tinted Thermopane Euro Windows	•						
Radius Tinted Insulated Dualpane Sliding Windows (Tempered)		•	•	•	•	•	•
Acrylic Tinted Thermopane Front Window	•	•					
Tempered & Laminated Thermopane Tinted Front Window			•	•	•	•	•
Ladder		0	0	0	0	0	0
LED Tail, License and Back-Up Lights	•	•	•	•	•	•	•
Diamond Plate Lower Front Gravel Guard w/Hitch Light	•						
Radius Cornered Storage Compartment Doors	•	•	•	•	•	•	•
Radius Entry Door w/Window	•	•	•	•	•	•	•
Keyless Entry Door Lock w/Fob	0	0	0	0	0	0	0
Roof Vent in Bed and Living Areas	•	•	•	•	•	•	•
Skylight in Galley/Dinette Area	•	•	•	•	•	•	•
Exterior Wash Station	•	•	•	•	•	•	•

Exterior Kitchen

	1575	1685	1985	1995	2185	2285	2295
Exterior Propane Connection	•	•	•	•	•	•	•
Swing-Out Entry Assist Handle	0	•	•	•	•/2	•/2	•
Pull-Out Storage Tray	0	0	0	0	0	0	0
Awning Slide-Out Cover	0	0	0	0	0	0	0
Lateral Arm Power Awning w/LED Lighting	0/12'	0/13'	0/16'	0/16'	0/18'	0/19'	0/19'

Construction

One-Piece TPO Roof		•	•	•	•	•	•
One-Piece Fiberglass Roof	•						
Laminated, Insulated Floor and Ceiling	•	•	•	•	•	•	•
Block Foam Insulation Throughout	•	•	•	•	•	•	•
Aluminum Framed Walls with Azdel substrate	•	•	•	•	•	•	•
Aluminum Framed Floor and Ceiling	•	•	•	•	•	•	•
Azdel Interior Panel Walls	•	•	•	•	•	•	•

Interior

Sofa Bed							•
Swivel Rockers							0/2
Hardwood Framed Flat Panel Cabinet Doors	•	•	•	•	•	•	•
Hardwood Raised Panel Cabinet Doors (O'Head Cabinets)	•	•	•	•	•	•	•
Decorative Pull Cabinet Hardware	•	•	•	•	•	•	•
Lite-Ply Cabinet Construction	•	•	•	•	•	•	•
Valance Boxes		•	•	•	•	•	•
Valances Attached to Interior Window Treatment	•						

Mini-Blinds in Galley and Living Area

	1575	1685	1985	1995	2185	2285	2295
Mini-Blinds in Galley and Living Area	•	•	•	•	•	•	•
Day/Night Shade in Dinette	•	•	•	•	•	•	•
Mini-Blinds in Bedroom	•	•	•	•	•	•	•
Combo Screen/Shade on Windows	•						
Day/Night Shades for Living Area & Bedroom	0	0	0	0	0	0	0
Insulated Hatch Covers	0	0	0	0	0	0	0
Wall Clock and Key Hanger	•	•	•	•	•	•	•
Fireplace							0

Galley/Appliances & Equipment

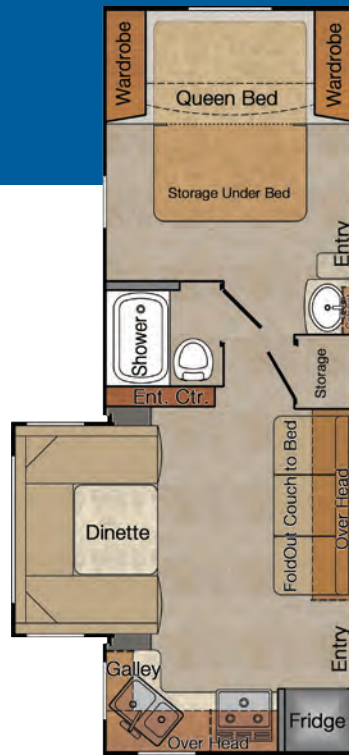
3-Burner Range	•	•	•	•	•	•	•
3-Burner High Output Range w/Oven & Cover - 21" Oven	0	0	0	0	0	0	0
Microwave Oven	0	0	0	0	0	0	0
Refrigerator (Cu Ft) 2-Way Double Door	6	6	6	6	6	6	6
Refrigerator (Cu Ft) 3-Way Double Door	5						
Upgrade Refrigerator Door Panels	•	•	•	•	•	•	•
Furnace BTU	18M	25M	25M	25M	25M	25M	25M
LP Tank Cover	•	•	•	•	•	•	•
Range Hood w/Light & Fan	•	•	•	•	•	•	•
Laminate Counter Tops and Tables	•	•	•	•	•	•	•
Folding Galley Extension				•			
Single Sink with Pull-Out Sprayer	•	•	•	•	•	•	•
Double Sink with Pull-Out Sprayer							•
Sink Cover	•	•	•	•	•	•	•
Magazine and Spice Racks - Wood	•	•	•	•	•	•	•



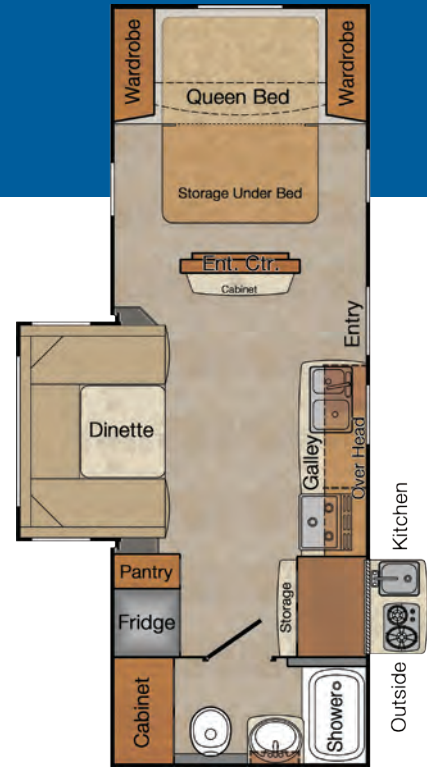
Model 1995



Model 2185



Model 2285



Model 2295

Fresh and Waste Water Systems

	1575	1685	1985	1995	2185	2285	2295
Water Pump w/In-Line Filter	•	•	•	•	•	•	•
Water Heater Gas/Electric/DSI	0	•	•	•	•	•	•
Water Heater Bypass and Winterizing Valve		0	0	0	0	0	0
Winterizing Valve	•						
Enclosed, Insulated & Heated Fresh Water Tank	•	•	•	•	•	•	•
Enclosed, Insulated & Heated Holding Tanks	0	0	0	0	0	0	0

Bathroom

Marine Toilet - Foot Pedal - Porcelain		•	•	•	•	•	•
Marine Toilet - Foot Pedal - Plastic	•						
Black Tank Flush	•	•	•	•	•	•	•
Tub	•						
Shower Pan		•	•	•	•	•	•
Medicine Cabinet w/Mirror Door	•	•	•	•	•	•	•
Mirror on Bath Door		•	•	•	•	•	•
Folding Lavy Extension				•	•		
Shower Curtain w/Tieback	•	•	•	•	•	•	•
Skylight - Dual Pane	•	•	•	•	•	•	•
Ducted Heat		•	•	•	•	•	•

Dinette

Dinette w/Reversible Cushions	•	•	•	•	•	•	•
Roll-Out Storage Drawers	0*1	*2	*2	*2	*2	*2	*2
Slide Out End Wall Windows		•	•	•	•	•	•
Residential Styled Overhead Light		•	•	•	•	•	•
Fabric Wrapped Radiused Pull-Out Drawers		•	•	•	•	•	•

Bedroom

	1575	1685	1985	1995	2185	2285	2295
Deluxe Queen Innerspring Mattress w/Pillow Top	•	•	•	•	•	•	•
Bedsread w/Throw Pillows	•	•	•	•	•	•	•
Headboard			•	•	•	•	•
Convertible Sofa/Queen Bed			0	0	0		
Bed-Maid	0	0	0	0	0	0	0
Overhead Cabinet Bunk		•					
Fold-Up Bunk Beds					•		
LED Reading Lights	•	•	•	•	•	•	•
12V & USB Receptacle	•	•	•	•	•	•	•
Privacy Curtain		•	•	•	•	•	•
Privacy Divider Doors					•	•	•

Electrical

Systems Monitor Panel	•	•	•	•	•	•	•
Battery Condition Indicator - LED	•	•	•	•	•	•	•
55 Amp Converter/Loadcenter		•	•	•	•	•	•
45 Amp Converter/Loadcenter	•						
LED Interior Lighting - Ceiling	•	•	•	•	•	•	•
Storage Compartment Lighting	•	•	•	•	•	•	•
Single Battery Rack with Manual Disconnect	•						
Dual Battery Rack with Manual Disconnect		•	•	•	•	•	•
Wall Switched Lighting	•	•	•	•	•	•	•
Vanity Lighting Over Medicine Cabinet		•	•	•	•	•	•
Pre-Wired for Roof A/C	•	•	•	•	•	•	•
A/C - Coleman 9 Low Profile Wall Control	0	0	0	0	0	0	0

	1575	1685	1985	1995	2185	2285	2295
A/C - Coleman 13.5 Low Profile Wall Control	0	0	0	0	0	0	0
A/C - Coleman 15 Wall Control	0	0	0	0	0	0	0
Wall Thermostat	•	•	•	•	•	•	•
Pre-Wired for Fantastic Vent	•	•	•	•	•	•	•
Fantastic Roof Vent	0	0	0	0	0	0	0
Power Roof Vent in Bath	•	•	•	•	•	•	•
Pre-Wired for TV Ant/Park/Sat Cable	•	•	•	•	•	•	•
TV Antenna HD	•	•	•	•	•	•	•
Bluetooth Compatible AM/FM/DVD Stereo w/Int & Ext Speakers	•	•	•	•	•	•	•
TV 24" (12 Volt)	0	0	0	0	0	0	0
TV 32" (12 Volt)							0
LED Mood Lighting (Dinette & Bedroom)			•	•	•	•	•
LED Patio Light - Switched	•	•	•	•	•	•	•
Solar Panel - 160 Watt	0	0	0	0	0	0	0
Exterior 110V Patio Outlet	•	•	•	•	•	•	•

• = Standard Option 0 = Optional Feature

Lance Design and Construction. The Legacy of Quality Begins Here.

The roof is made of energy-star rated TPO with vents that clamp in place eliminating screws and potential leaks. Integrated rain gutters and drip spouts prevent the sides of your coach from streaking.

Rigid block foam insulation yields maximum "R" value and resists sagging and promotes structural strength.

Interiors are constructed of Lite-Ply™ imported from Europe. This superior product is solid, lighter and stronger providing increased "R" value, beauty and durability.

3D advanced CAD engineering creates precise plans that run CNC machinery. The result is that every part is perfect every time.

Keeping it all together are stainless steel fasteners. Unlike our competitors, this expensive hardware resists corrosion making for a lasting investment.

High quality fiberglass exterior panels are laminated under intense pressure with heat-setting adhesives for years of trouble-free service.

Engineered super lightweight powder coated tempered steel custom chassis Huck bolt construction eliminates weak and rust-prone welds.

Heavy duty rubber torsion-bar suspension axles with EZ-lube bearings insure a smooth ride and easy maintenance, and self adjusting brakes.

Lance's aluminum framed superstructure provides for an extremely solid trailer that is also light-weight.

Lance uses more expensive Azdel™ in place of Luan wood virtually eliminating mold and mildew. It's also lighter and has a better "R" value for superior insulation.

All seals use an anti-wicking material to prevent moisture from transferring to the laminate walls.

Slideout rooms use Schwintek™ hardware for smooth, dependable operation. Lighter in weight than other mechanisms, they're also smaller allowing for more living space.



Towing+Compatibility

These are general guidelines to use when matching a trailer to your tow vehicle assuming standard equipment on your trailer. Whether any travel trailer can be used with your vehicle and its capacities for carrying and/or towing is effected by how much optional equipment is added to the trailer, and the weight of passengers and all other items you carry in your tow vehicle and trailer.

And because we're unfamiliar with your tow vehicle, Lance makes no warranties or representation – express or implied – as to performance or reliability of your tow vehicle with a Lance trailer. For professional guidance, always consult with your Factory Authorized Lance Dealer. They're trained in properly calculating proper matches between tow vehicles and trailers.

3,500 Pound Tow Rating



Model: 1575

5,000 Pound Tow Rating



Models: 1575, 1685, 1985, 1995

6,000 Pound Tow Rating



Models: 1575, 1685, 1985, 1995, 2185, 2285, 2295

Key Supplier Partners



Graphics



Awnings



Audio Systems



Slide Out Mechanisms



Axles



Fiberglass Sidewalls



Cabinetry



Toilets



Refrigerators



Appliances



Lightweight Composites



Lance Owners of America (LOA)



The Lance Owners of America is an organization of people that all share some common interests. We all love traveling and camping in our Lance Truck Campers, Travel Trailers and Toy Haulers. We would like to invite you to explore our website and consider becoming a member of the Lance Owners of America. Our goal is to provide the Lance Owner community with valuable information and events to help make your Lance camping experience a great one. LanceOwners.org

The 2015 LANCE TRAVEL TRAILER BROCHURE. ©2015 Lance Camper Mfg. Corp. (LCMC). All rights reserved. Lance, the Lance logomark, the Lance logomark with chevron, America's Favorite Truck Camper, RV: Recreational Versatility, The Most Versatile RVs On The Planet, America's Favorite Campers – Earth's Most Versatile RVs, The Lance Look, Lance Custom Design, Bed-Maid, LanceLock, Living The Lance Life, SportsCamper and other exclusive Lance product names, marks or designations are trademarks, service marks or registered trademarks of LCMC. All other marks are property of their respective owners. **All product data, graphics and photography, illustrations and/or renderings in this book were as accurate as possible at press time. Subsequent refinements during the model year may be evident in the actual product. LCMC reserves the right to change prices, colors, materials, equipment and specifications without notice – as well as to add, modify or discontinue models shown in promotional materials and/or on its websites.** All weights, fuel and liquid capacities are approximate and dimensions are nominal. LCMC has designed its travel trailers to provide a variety of potential users for owners. Each model features optimum living, storage, fluid, seating and sleeping capacities. Though each owner enjoys this potential, ultimately, it's that purchaser's sole responsibility to select the proper Lance travel trailer and towing equipment appropriate to their tow vehicle without exceeding safe operating and towing capacities. Your Factory Authorized Lance Dealer can advise you of the operating parameters for your particular situation, and can confirm prices and product specifications material to your purchase decision. See website for full warranty information. Brochure printed in the USA on FSM paper. 40M. 0115. Rev2.



LanceCamper.com

Click on the QR code and "Discover The Lance Difference" for yourself, while taking a plant tour of Lance Camper Mfg. Corp.

