



Generations of family fun.

EAGLE

2015 TRAVEL TRAILERS AND FIFTH WHEELS BY JAYCO



This 1986 brochure cover inspired our 2015 literature.



2
YEAR
WARRANTY

BUILT FOR FAMILY-SIZED getaways



On the cover: The 1986 brochure artwork, illustrated by Tim MacDonald, was part of a successful ad campaign. These illustrations inspired the 2015 Jayco brochure covers, which are live re-creations of Tim's artwork.

For 45 years, Jayco has helped create generations of family fun, and over the course of that time, fun still looks remarkably the same. From campfires to fishing, from relaxing to eating, fun has the same feel generations later—and all with a Jayco RV nearby. Today, we're the largest family-owned RV manufacturer in the world, and our promise is to continually strive to build family-friendly products that will outlast just about everything but your memories. Join us in our generations of family fun.



Scan this QR code to watch how Jayco delivers Generations of Family Fun or visit www.GenerationsOfFamilyFun.com.

Every family defines fun a little differently, but thanks to our robust 2015 Eagle lineup, it's easier than ever to find the perfect family getaway. Introducing the Eagle family:



Eagle Travel Trailers

Jayco's top-of-the-line travel trailer — [PAGE 4](#)



TRAVEL LENGTH | 33' 11" - 39' 3"



WEIGHT | 6,605-8,710 lbs.



SLEEPS | 3-12



Eagle HT

Our lightest fifth wheel yet — [PAGE 8](#)



TRAVEL LENGTH | 25' 5" - 33' 9"



WEIGHT | 6,220-8,300 lbs.



SLEEPS | 3-10



Eagle Fifth Wheels

A family-favorite fifth wheel — [PAGE 10](#)



TRAVEL LENGTH | 33' 3" - 37' 1"



WEIGHT | 8,650-10,305 lbs.



SLEEPS | 3-10



Eagle Premier

Jayco's luxury fifth wheel — [PAGE 14](#)



TRAVEL LENGTH | 34' 3" - 42' 4"



WEIGHT | 10,510-13,005 lbs.



SLEEPS | 3-11



EAGLE TRAVEL TRAILER 338RETS | ALMOND

Eagle

Travel Trailers

The 2015 Jayco Eagle travel trailer delivers top-of-the-line comfort in this family-friendly lineup. Brimming with a list of premium standard features, like a room-brightening skylight and a spacious 8 cu. ft. refrigerator, Eagle will put the word *treat* into your next family retreat.



EAGLE TRAVEL TRAILER | 8 CU. FT. FRIDGE



EAGLE TRAVEL TRAILER 338RETS | ALMOND



EAGLE TRAVEL TRAILER 338RETS | ALMOND

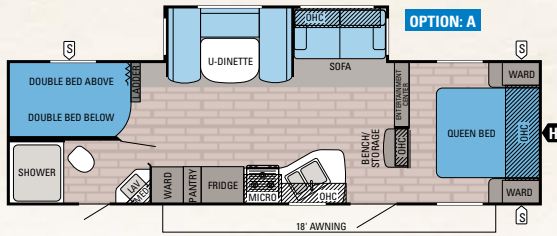


PREMIUM STANDARDS

You won't find other travel trailers loaded with so many premium standard features, like LED lighting, a kitchen skylight, dark-tinted frameless windows, residential Shaw carpeting and a command center.

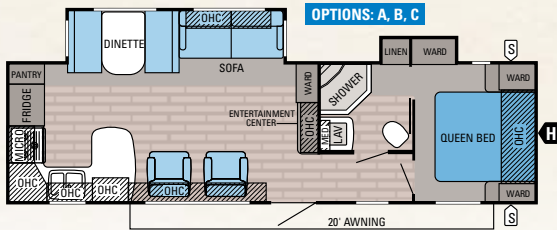


EAGLE TRAVEL TRAILER 338RETS | ALMOND



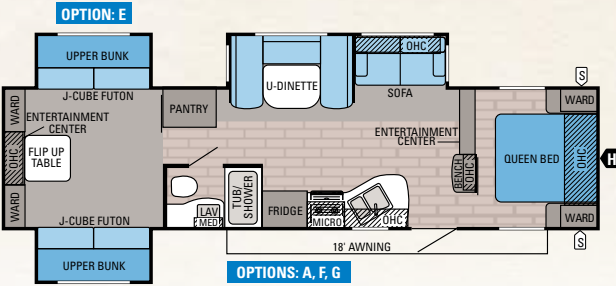
EAGLE TRAVEL TRAILER | 284BHBE

Ext. Length: 33' 11" Ext. Height: 137" Unloaded Wt. (lbs.): 6,605 Sleeps: 8-10



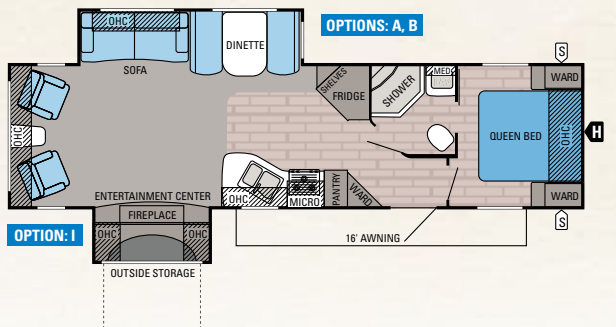
EAGLE TRAVEL TRAILER | 306RKDS

Ext. Length: 34' 5" Ext. Height: 138" Unloaded Wt. (lbs.): 7,095 Sleeps: 3-6



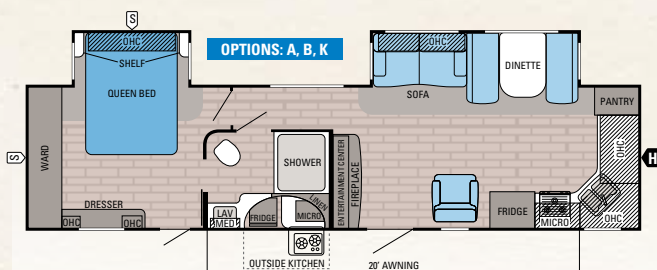
EAGLE TRAVEL TRAILER | 314TSBH

Ext. Length: 37' 10" Ext. Height: 137" Unloaded Wt. (lbs.): 7,945 Sleeps: 9-12



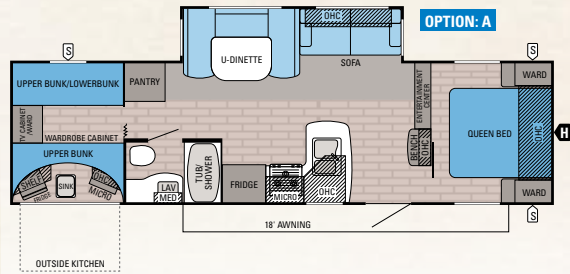
EAGLE TRAVEL TRAILER | 321RLDS

Ext. Length: 35' 11" Ext. Height: 139" Unloaded Wt. (lbs.): 7,475 Sleeps: 3-6



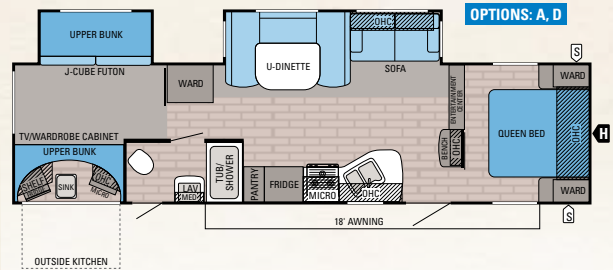
EAGLE TRAVEL TRAILER | 336FKDS

Ext. Length: 37' 8" Ext. Height: 138" Unloaded Wt. (lbs.): 8,110 Sleeps: 3-6



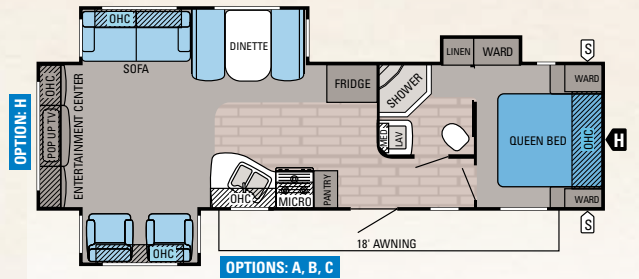
EAGLE TRAVEL TRAILER | 294QBOK

Ext. Length: 34' 9" Ext. Height: 138" Unloaded Wt. (lbs.): 6,985 Sleeps: 7-9



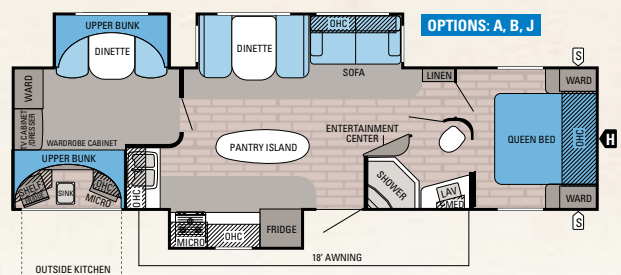
EAGLE TRAVEL TRAILER | 314BHDS

Ext. Length: 37' 3" Ext. Height: 137" Unloaded Wt. (lbs.): 7,710 Sleeps: 8-10



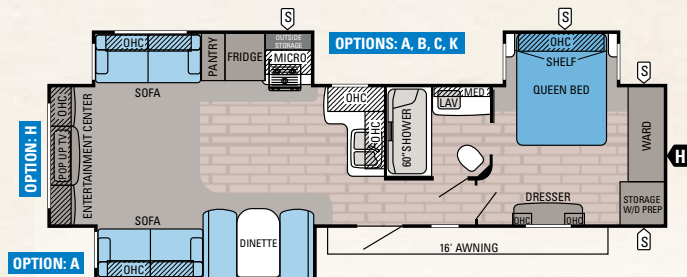
EAGLE TRAVEL TRAILER | 318RETS

Ext. Length: 35' 3" Ext. Height: 136" Unloaded Wt. (lbs.): 7,275 Sleeps: 3-6



EAGLE TRAVEL TRAILER | 324BHTS

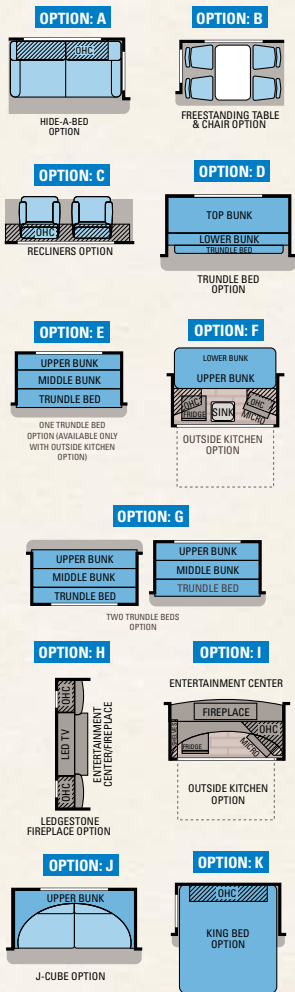
Ext. Length: 37' 2" Ext. Height: 138" Unloaded Wt. (lbs.): 8,240 Sleeps: 6-10



EAGLE TRAVEL TRAILER | 338RETS

Ext. Length: 39' 3" Ext. Height: 138" Unloaded Wt. (lbs.): 8,710 Sleeps: 3-8

FLOORPLAN OPTIONS



STANDARD EXTERIOR EQUIPMENT

Deluxe Graphics Package
High-gloss, Ivory fiberglass shell
TuffShell vacuum-bonded, laminated sidewalls, slideout walls and rear wall
Fully enclosed and heated underbelly
80-plus gallon freshwater tank
Magnum Truss Roof System with one-piece DiFlex II material
Climate Shield
• Enclosed, insulated, heated underbelly
• High-BTU output furnace
• Astrofoil in roof and floors
I-Class cambered, structural steel I-beams
Radial tires
Aluminum rims
MOR/ryde CRE3000 suspension system
Completely enclosed and protected slide mechanisms
30" x 72" main entrance door
Extendable main entrance grab handle
Oversized entry step with safety light
Exterior marine-grade speakers (2)
Frameless, G20 dark-tinted, safety-glass windows
Pass-thru basement storage with slam latches and light
Electric patio awning with LED lights
Outside kitchen (294QBOK, 314BHDS, 324BHDS)
Dual-battery capacity
30-amp power service
Black tank flush
Cable/satellite prep
Digital TV antenna
Under-mounted spare tire
Frame fully prepped for bike rack/cargo tray

STANDARD INTERIOR EQUIPMENT

Steel ball bearing drawer guides, 75-lb. capacity, full extension
Large, split kitchen sink with (2) cutting board covers and pull-out-style kitchen faucet
18-gallon/hr. quick recovery gas/electric DSI water heater (6-gallon)
8 cu. ft. refrigerator
LED interior lights throughout
Command center for switches (includes USB charger)
Arched 84" ceiling with decorative transitions
Closeable and directional air conditioner vents
Residential window casing in living areas
Sofa pillows
Pleated night shades
Glass shower enclosure
Porcelain bath stool with foot flush
Pillowtop Denver Mattress with quilted bedspread
300-lb. bunk bed capacity (600-lb. in 284BHBE)

CUSTOMER VALUE PACKAGE (MANDATORY)

Outside shower
13,500-BTU dual-ducted air conditioner with Chillgrille feature
Cap-integrated, dual, 30-lb. propane bottles with auto-regulator
Microwave
Oven
Water heater bypass
Bathroom fan
Bath skylight
ABS tile-look tub/shower surround

PREMIER PACKAGE

Gel-coat sidewalls
Remote for slideouts, awnings, patio lights and jacks
Raised-panel cabinetry with lumbercore, screwed-style construction
Large bath power vent

OPTIONS

Customer Value Package with 13,500-BTU air conditioner
Customer Value Package with 15,000-BTU air conditioner
Premier Package
2nd air conditioner in bedroom (15,000-BTU)
Thermal-pane, tinted, safety-glass windows
Electric tongue jack
Electric stabilizer jacks (4)
Outside kitchen (314TSBH and 321RLDS)
32" LED HDTV (forced option on 321RLDS; n/a 318RETS or 338RETS with Ledgestone option)
40" LED HDTV (forced option on 336FKDS)
Wireless backup/rearview camera and monitor kit
Bumper-mounted grill
Bike rack/cargo tray
50-amp service with 2nd air conditioner prep (dual-ducted) (std 321RLDS, 336FKDS, 338RETS)
Roof ladder
Solid-surface kitchen countertops with under-mount sink and covers
Free-standing table and chairs (select models)
Linoleum in living area (306RKDS, 318RETS, 321RLDS and 338RETS)
Ledgestone fireplace with 40" LED HDTV (318RETS and 338RETS)
Recliner in lieu of swivel chair (336FKDS)
Recliners in lieu of swivel chairs (306RKDS, 318RETS and 321RLDS)
Recliners in lieu of door-side sofa (338RETS)
Door-side hide-a-bed (338RETS)
Hide-a-bed sofa with tri-fold Denver Mattress
King-sized bed (336FKDS, 338RETS)
Trundle bed in lieu of J-Cube futon (314BHDS, 314TSBH)
Two trundle beds in lieu of J-Cube futons (314TSBH; n/a with outside kitchen option)
J-Cube futon with folding bunk (324BHDS)

SPECIFICATIONS

MODELS	DIMENSIONS				WEIGHTS (LBS.)				TANKS (GALS.)		
FLOORPLAN	EXTERIOR TRAVEL LENGTH	EXTERIOR WIDTH	EXT. HEIGHT (WITH A/C)	INTERIOR HEIGHT	UNLOADED VEHICLE WEIGHT*	DRY HITCH WEIGHT	GROSS VEHICLE WEIGHT RATING	CARGO CARRYING CAPACITY	FRESH (INCLUDES WATER HEATER)	GRAY	BLACK
284BHBE	33' 11"	96"	137"	84"	6,605	630	9,250	2,645	82	32.5	32.5
294QBOK	34' 9"	96"	138"	84"	6,985	760	9,500	2,515	82	40.5	32.5
306RKDS	34' 5"	96"	138"	84"	7,095	1,025	9,750	2,655	82	65	32.5
314BHDS	37' 3"	96"	137"	84"	7,710	920	9,975	2,265	82	40.5	32.5
314TSBH	37' 10"	96"	137"	84"	7,945	860	10,750	2,805	82	40.5	32.5
318RETS	35' 3"	96"	136"	84"	7,275	815	9,975	2,700	82	32.5	32.5
321RLDS	35' 11"	96"	139"	84"	7,475	1,035	10,250	2,775	86	32.5	32.5
324BHDS	37' 2"	96"	138"	84"	8,240	940	10,950	2,710	86	65	32.5
336FKDS	37' 8"	96"	138"	84"	8,110	1,055	10,750	2,640	86	65	32.5
338RETS	39' 3"	96"	138"	85"	8,710	1,140	10,950	2,240	84	65	32.5

*The weights of certain options and/or option packages are not included in the UVW listed in the specification charts.

Unloaded Vehicle Weight (UVW): Sometimes referred to as "Dry Weight," UVW means the typical weight of this trailer as built at the factory. The UVW, as used in product literature and other promotional materials, does not include cargo, fresh water, propane, options or dealer-installed accessories.

Gross Vehicle Weight Rating (GVWR): GVWR means the maximum permissible weight of the trailer, including the UVW plus passengers, personal items, all cargo, fluids, options, and dealer-installed accessories. The GVWR is equal to or greater than the sum of the UVW and the CCC.

Cargo Carrying Capacity (CCC): CCC means the maximum weight of all passengers, personal items, food, fresh water, propane, tools, other cargo and dealer-installed accessories that can be carried by the trailer. CCC is equal to or less than GVWR minus UVW. The addition of options will decrease the CCC.

Hitch Weight (HW): The hitch weight, as used in product literature and other promotional materials, does not include cargo, fresh water, propane gas, options or dealer-installed accessories. The addition of these types of items will either add to or subtract from the stated hitch weight.

It is important for your safety and enjoyment that your tow vehicle be adequately sized and equipped to tow and handle the GVWR of the RV you select. Review weights and rating of your tow vehicle and consult a competent advisor for questions or advice. Whether you are new to RVing or a veteran, get a feel for the performance of your tow vehicle before heading out on the roadways. When you tow an RV, you must drive differently than when you drive a single vehicle. Practice hooking up, driving, backing up and braking in a safe environment or seek out professional instruction. Jayco affixes a weight label to each RV which lists weight information for that vehicle. See specifications chart above.



EAGLE HT FIFTH WHEEL 29.5BHDS | PEWTER

Eagle HT

Lightweight Fifth Wheels

The 2015 Eagle HT is our lightest fifth wheel yet, but don't let its lightweight label fool you. This spacious model is loaded with conveniences that make it just as fun to camp in as it is to tow. From full-featured kitchens — inside and out — to a myriad of sleeping arrangements, including Denver Mattress bunk beds, Eagle HT packs lightweight fun.

YOUR TRUCK HAS MET ITS LIGHTWEIGHT MATCH

MAKE	MODEL	ENGINE	CAB/BED	AXLE RATIO / EQUIPMENT
Chevrolet	Silverado 1500 2WD	6.2L V-8	Extended/Standard	3.73:1, Towing Package
Dodge	Ram 1500 2WD	5.7L V-8	Regular/Short	3.73:1, 5-speed AT
Ford	F-150 2WD	5.0L V-8	Regular/Long	3.73:1
GMC	Sierra 1500 2WD	6.2L V-8	Extended/Standard	3.73:1, Towing Package
Nissan	Titan 2WD	5.6L V-8	King/Short	Premium Utility Package
Toyota	Tundra 2WD	5.7L V-8	Regular/Long	Towing Package

*It is important for your safety and enjoyment that your tow vehicle be adequately sized and equipped to tow and handle the GVWR of the RV you select. Review weights and rating of your tow vehicle and consult a competent advisor for questions or advice.



EAGLE HT FIFTH WHEEL 29.5BHDS | PEWTER



EAGLE HT FIFTH WHEEL 29.5BHDS | PEWTER

STANDARD EXTERIOR EQUIPMENT

MOR/ryde CRE3000 rubberized suspension
Ivory exterior fiberglass
Ivory gel-coated front cap with integrated LED lights
Frameless windows
15" radial tires
I-Class structural I-beam frame
Box-tube steel upper deck framing
TuffShell vacuum-bonded, laminated walls
Magnum Truss Roof System
Completely enclosed and protected electric slideout mechanisms
3-step, extra-sturdy entrance steps
30" x 72" entrance door
Slam-latch baggage doors
Exterior marine-grade speakers
30-amp power service with detachable cord
Cable/satellite hookup
Digital TV antenna
Outside grill prep
Under-mounted spare tire
Frame prepped for bolt-on Reese hitch (300-lb. tongue, 3,000-lb. tow rating)
Climate Shield insulation package
Magnetic latches on select baggage doors
Hidden saddlebag storage with lid and restraint netting in pass-through
Sidewall-mounted exterior convenience center

STANDARD INTERIOR EQUIPMENT

60" x 80" queen pillowtop Denver Mattress
Under-bed storage
Porcelain stool
Hand-crafted, cherry-stained cabinetry
Heavy-duty 75-lb. ball bearing drawer guides
8 cu. ft. gas/electric refrigerator with freezer
Decorative ceiling light
32" LED HDTV
USB charging port
Congoleum "wood plank" Diamondflor vinyl flooring
Shaw residential carpeting with R2X stain guard
Heritage Collection furniture
Hide-a-bed sofa with Denver sleep surface
Pleated window shades
Hand-crafted overhead cabinetry
5/8" tongue-and-groove joined plywood flooring
LED interior lighting throughout
Hidden switch command center with USB charger
Directional and closeable A/C vents

CUSTOMER VALUE PACKAGE (MANDATORY)

13,500- or 15,000-BTU dual-ducted "Whisper Quiet" A/C
30-lb. propane bottles
Machined aluminum rims
Bathroom skylight
Bluetooth sound system with AM/FM/CD/DVD and MP3 input jack
Pillowtop Denver Mattress sleep system
Electric patio awning with LED light
Microwave
Outside shower
Sink covers (2)
Solar prep
Under-mounted spare tire
Tub surround
Water heater bypass

OPTIONS

Customer Value Package with 13,500-BTU air conditioner
Customer Value Package with 15,000-BTU air conditioner
Electric fireplace (26.5BHS, 27.5RKDS, 27.5RLTS, 28.5RSTS)
Living area carpeting (n/a 23.5RBS, 26.5RKS, 29.5BHDS)
Free-standing table with 4 chairs (n/a 23.5RBS, std. on 27.5RLTS, 28.5RSTS)
Wireless backup/rearview camera and monitor kit
50-amp service with dual A/C ducting
2nd bedroom A/C (15,000-BTU; requires 50-amp service)
MOR/ryde rubberized pin box
Reese Revolution 90-degree pin box
Rear electric stabilizer jacks
Bolt-on rear hitch
Thermal-pane, tinted, safety-glass windows
Bumper-mount grill
Roof ladder



EAGLE FIFTH WHEEL 345BHTS | CHESTNUT

Eagle

Fifth Wheels

The 2015 Eagle fifth wheel gives you countless reasons to love camping, starting with the newest touches we've added to this popular lineup. Boasting functional kitchens, kid-favorite bunk rooms and a private bedroom with Denver Mattress, you're certain to find a perfect getaway. The 2015 lineup delivers stylish functionality with solid-surface countertops, skylights and LED lighting throughout.



EAGLE FIFTH WHEEL 323LKTS | ALMOND



EAGLE FIFTH WHEEL 323LKTS | ALMOND



EAGLE FIFTH WHEEL 323LKTS | ALMOND

STANDARD EXTERIOR EQUIPMENT

MOR/ryde CRE3000 rubberized suspension
I-Class structural I-Beam frame
TuffShell vacuum-bonded, laminated walls
Magnum Truss Roof System
Completely enclosed and protected electric slideout mechanisms
3-step, extra-sturdy entrance steps
30" x 72" entrance door
Slam-latch baggage doors
Exterior marine-grade speakers
Vista View doorside campsite windows
Triple battery compartment with disconnect
Heated, enclosed Uni-dock exterior utility center
50-amp power service with detachable Powersmart LED cord
Cable/satellite hookup
Digital TV antenna
Outside grill prep
Under-mounted spare tire
Frame prepped for rear cargo accessory hitch
Roof ladder
MOR/ryde EZ-Stow toolbox in cargo area
Climate Shield insulation package
Magnetic latches on select baggage doors

STANDARD INTERIOR EQUIPMENT

Home on the Road Master Suite: 60" x 80" residential queen pillowtop Denver Mattress, bathroom linen closet storage, oversized wardrobes and drawers, under-bed storage, dual-entrance bathroom and porcelain stool
48" residential-sized shower with sliding glass door (select models)
Dual-ducted 2nd A/C prep
Residential-style pantry storage
Kitchen faucet with pullout sprayer
Hand-crafted raised-panel cabinetry
Heavy-duty, 75-lb. ball bearing drawer guides
8 cu. ft. gas/electric refrigerator with freezer
Tinted skylight ceiling feature with integrated LED lights
USB charging port
Extra 110V power outlets in kitchen and slide rooms
Flush-mount sink covers
Congoleum "Wood-plank" Diamondfloor vinyl flooring
Shaw residential carpeting with R2X stain guard
Heritage Collection furniture
Hide-a-bed sofa with Denver sleep surface
Pleated window shades
Hand-crafted overhead cabinetry
5/8" tongue-and-groove joined plywood floor decking
LED interior lighting throughout
110V ceiling fan (n/a 339FLOS)
Hidden-switch command center
Built-in bench locker/coat storage (n/a 339FLOS, 345BHST)
Directional and closeable A/C vents

CUSTOMER VALUE PACKAGE (MANDATORY)

13,500-BTU dual-ducted "Whisper Quiet" A/C system
Bathroom power vent
Bath skylight
Pillowtop Denver Mattress sleep system
Electric patio awning with integrated LED lights
Over-the-range microwave with exhaust fan
Water heater bypass
Outside shower
Machined aluminum rims
Solar prep

LUXURY PACKAGE (MANDATORY)

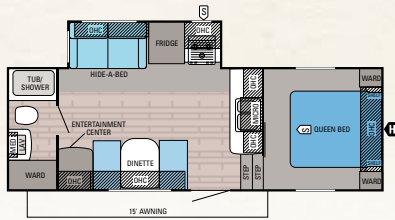
4-point electric auto-leveling system
40" LED HDTV
AM/FM/CD/DVD/USB A/V system with Bluetooth audio
Rounded Barnwood and LedgeStone fireplace
Frameless, tinted windows
High-gloss Ivory fiberglass exterior
Recessed LED front cap lighting
Solid-surface LG kitchen countertops
Stainless steel kitchen sink

OPTIONS

Customer Value Package with 13,500-BTU A/C
Customer Value Package with 15,000-BTU A/C
Luxury Package
12 cu. ft. refrigerator (n/a 345BHST)
Carpeting in living area (291RST, 321RST, 323LKT, 337RDT)
Sleeper sofa (replaces J-Cube futon on 345BHST, standard on 325BHQ)
Party sofa with stowable tables and hide-a-bed in lieu of dinette booth/theater seating (325BHQ, 345BHST)
Free-standing table and 4 chairs (std. on 291RST, 321RST, 323LKT, 339FLOS)
2nd ducted A/C in bedroom (15,000 BTU)
MOR/ryde rubberized pin box
Reese Revolution 90-degree pin box
Rear cargo accessory receiver
Wireless backup/rearview camera and monitor kit
Thermal-pane, tinted, safety-glass windows
2nd power awning (291RST, 321RST, 323LKT, 337RDT)
Outside grill

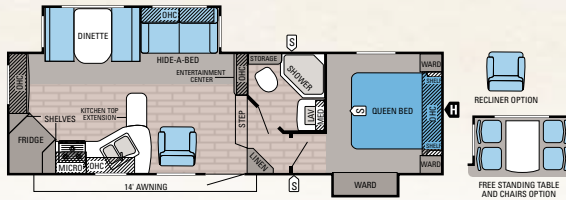


EAGLE HT FLOORPLANS



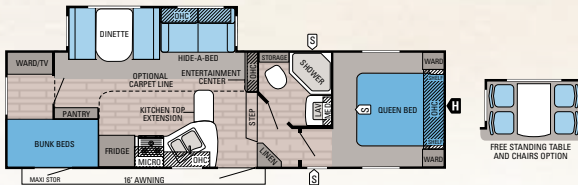
EAGLE HT FIFTH WHEEL | 23.5RBS

Ext. Length: 25' 5" Ext. Height: 141" Unloaded Wt. (lbs.): 6,220 Sleeps: 4-6



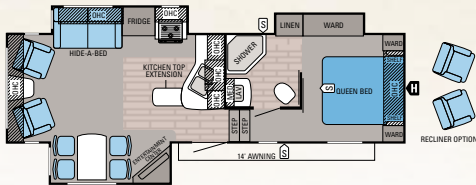
EAGLE HT FIFTH WHEEL | 26.5RKS

Ext. Length: 29' 4" Ext. Height: 145" Unloaded Wt. (lbs.): 7,040 Sleeps: 6



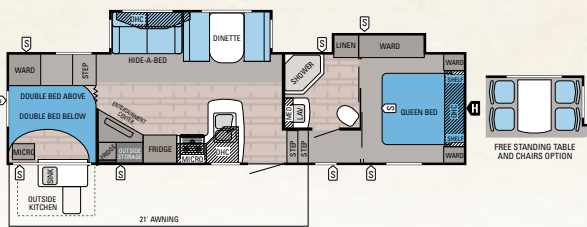
EAGLE HT FIFTH WHEEL | 27.5BHS

Ext. Length: 30' 11" Ext. Height: 147" Unloaded Wt. (lbs.): 7,195 Sleeps: 8



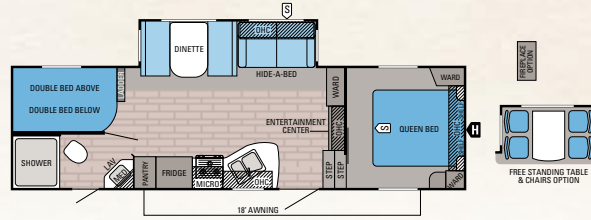
EAGLE HT FIFTH WHEEL | 27.5RLTS

Ext. Length: 30' Ext. Height: 141" Unloaded Wt. (lbs.): 7,625 Sleeps: 3



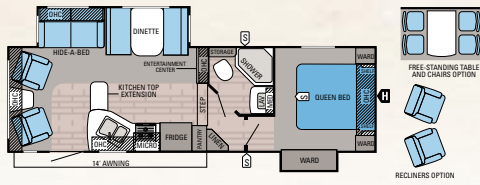
EAGLE HT FIFTH WHEEL | 29.5BHDS

Ext. Length: 33' 9" Ext. Height: 148" Unloaded Wt. (lbs.): 8,300 Sleeps: 8-10



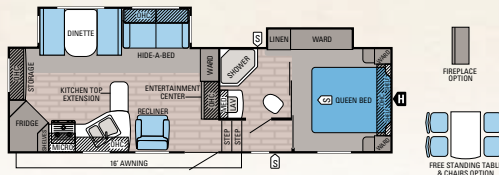
EAGLE HT FIFTH WHEEL | 26.5BHS

Ext. Length: 30' 6" Ext. Height: 149" Unloaded Wt. (lbs.): 6,795 Sleeps: 8-10



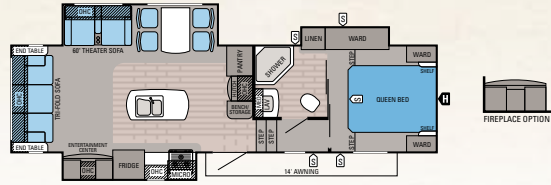
EAGLE HT FIFTH WHEEL | 26.5RLS

Ext. Length: 29' Ext. Height: 147" Unloaded Wt. (lbs.): 7,170 Sleeps: 5



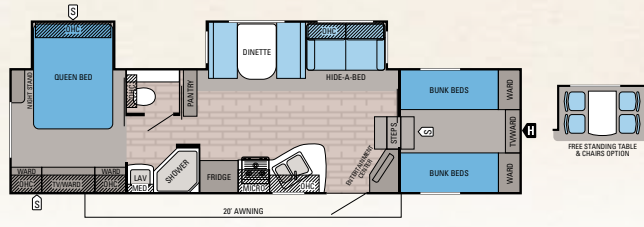
EAGLE HT FIFTH WHEEL | 27.5RKDS

Ext. Length: TBD Ext. Height: TBD Unloaded Wt. (lbs.): TBD Sleeps: 4-6



EAGLE HT FIFTH WHEEL | 28.5RSTS

Ext. Length: 32' 5" Ext. Height: 144" Unloaded Wt. (lbs.): 8,110 Sleeps: 3-4



EAGLE HT FIFTH WHEEL | 29.5FBDS

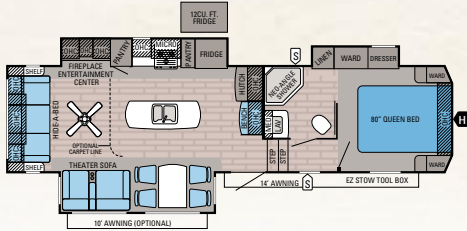
Ext. Length: 33' 5" Ext. Height: 148" Unloaded Wt. (lbs.): 7,900 Sleeps: 7-10

EAGLE HT SPECIFICATIONS

MODELS	DIMENSIONS				WEIGHTS (LBS.)				TANKS (GALS.)		
FLOORPLAN	EXTERIOR TRAVEL LENGTH*	EXTERIOR WIDTH	EXT. HEIGHT (WITH A/C)	INTERIOR HEIGHT	UNLOADED VEHICLE WEIGHT**	DRY HITCH WEIGHT	GROSS VEHICLE WEIGHT RATING	CARGO CARRYING CAPACITY	FRESH (INCLUDES WATER HEATER)	GRAY	BLACK
23.5RBS	25' 5"	96"	141"	73"	6,220	1,235	9,950	3,730	48	65	32.5
26.5BHS	30' 6"	96"	149"	75"	6,795	1,335	9,950	3,155	49	32.5	32.5
26.5RKS	29' 4"	96"	145"	75"	7,040	1,380	9,950	2,910	48	65	32.5
26.5RLS	29'	96"	147"	77"	7,170	1,325	9,950	2,780	48	65	32.5
27.5BHS	30' 11"	96"	147"	79"	7,195	1,340	9,950	2,755	48	65	32.5
27.5RKDS	TBD	96"	TBD	TBD	TBD	TBD	TBD	TBD	48	65	32.5
27.5RLTS	30'	96"	141"	74"	7,625	1,260	9,950	2,325	48	65	32.5
28.5RSTS	32' 5"	96"	144"	74"	8,110	1,435	9,950	1,840	48	65	32.5
29.5BHDS	33' 9"	96"	148"	74"	8,300	1,515	9,950	1,650	48	73	32.5
29.5FBDS	33' 5"	96"	148"	88"	7,900	1,545	9,950	2,050	49	65	32.5

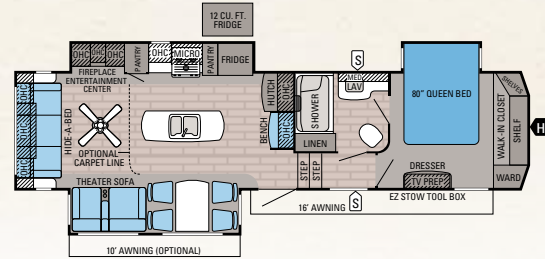
*Distance from the pin box to the bumper; total exterior length may be longer. **The weights of certain options and/or option packages are not included in the UVW listed in the specification charts.

EAGLE FIFTH WHEEL FLOORPLANS



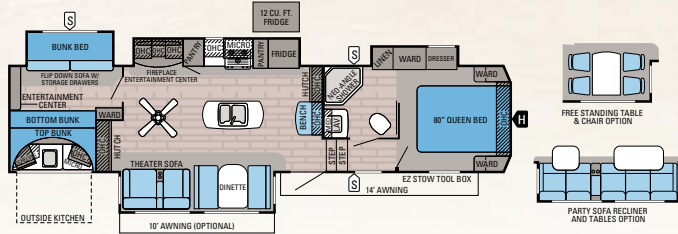
EAGLE FIFTH WHEEL | 291RSTS

Ext. Length: **33' 5"** Ext. Height: **152"** Unloaded Wt. (lbs.): **9,160** Sleeps: **4**



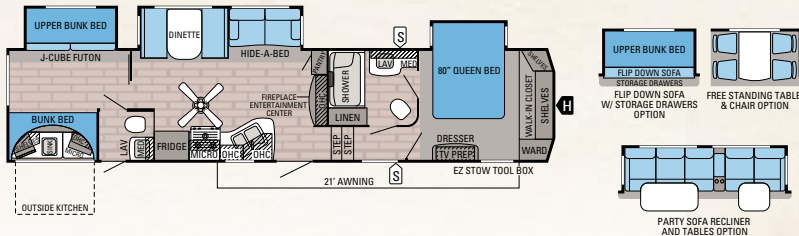
EAGLE FIFTH WHEEL | 321RSTS

Ext. Length: **35' 1"** Ext. Height: **152"** Unloaded Wt. (lbs.): **9,620** Sleeps: **4**



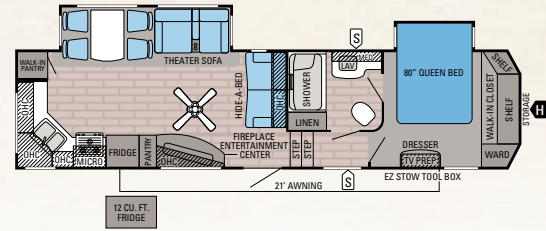
EAGLE FIFTH WHEEL | 325BHQS

Ext. Length: **37' 9"** Ext. Height: **157"** Unloaded Wt. (lbs.): **10,730** Sleeps: **6-7**



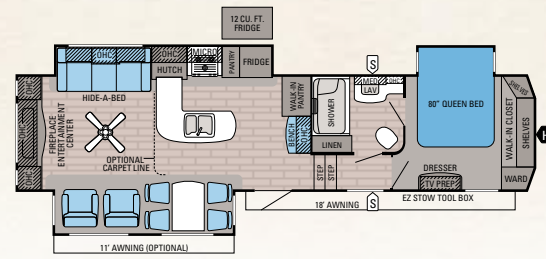
EAGLE FIFTH WHEEL | 345BHTS

Ext. Length: **38' 8"** Ext. Height: **149"** Unloaded Wt. (lbs.): **10,530** Sleeps: **8-9**



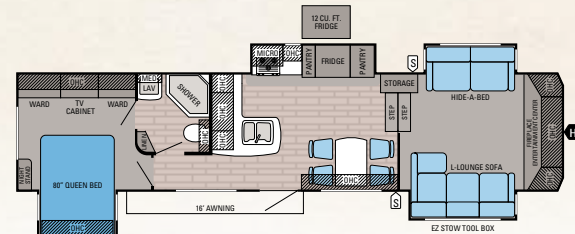
EAGLE FIFTH WHEEL | 293RKDS

Ext. Length: **TBD** Ext. Height: **TBD** Unloaded Wt. (lbs.): **TBD** Sleeps: **4**



EAGLE FIFTH WHEEL | 323LKTS

Ext. Length: **36' 4"** Ext. Height: **152"** Unloaded Wt. (lbs.): **10,210** Sleeps: **4**



EAGLE FIFTH WHEEL | 339FLOS

Ext. Length: **36' 10"** Ext. Height: **161"** Unloaded Wt. (lbs.): **9,875** Sleeps: **4-6**

EAGLE FIFTH WHEEL SPECIFICATIONS

FLOORPLAN	DIMENSIONS				INTERIOR HEIGHT	WEIGHTS (LBS.)				TANKS (GALS.)		
	EXTERIOR TRAVEL LENGTH*	EXTERIOR WIDTH	EXT. HEIGHT (WITH A/C)	EXT. HEIGHT (WITH OPT. BEDROOM A/C)		UNLOADED VEHICLE WEIGHT**	DRY HITCH WEIGHT	GROSS VEHICLE WEIGHT RATING	CARGO CARRYING CAPACITY	FRESH (INCLUDES WATER HEATER)	GRAY	BLACK
291RSTS	33' 5"	96"	152"	156"	78"	9,160	1,720	12,000	2,840	81	85	50
293RKDS	34' 5"	96"	154"	156"	78"	9,030	1,790	13,000	2,965	81	87	50
321RSTS	35' 1"	96"	152"	156"	77"	9,620	2,035	12,500	2,880	81	87	50
323LKTS	36' 4"	96"	152"	156"	77"	10,210	2,055	12,950	2,740	81	87	50
325BHQS	37' 9"	96"	157"	157"	78"	10,730	2,120	13,750	3,020	81	85	50
339FLOS	36' 10"	96"	161"	161"	95"	9,875	2,485	12,600	2,725	81	74	37
345BHTS	38' 8"	96"	149"	156"	77"	10,530	2,074	13,250	2,720	81	95	50

*Distance from the pin box to the bumper; total exterior length may be longer. **The weights of certain options and/or option packages are not included in the UVW listed in the specification charts.

Unloaded Vehicle Weight (UVW): Sometimes referred to as "Dry Weight," UVW means the typical weight of this trailer as built at the factory. The UVW, as used in product literature and other promotional materials, does not include cargo, fresh water, propane, options or dealer-installed accessories.

Gross Vehicle Weight Rating (GVWR): GVWR means the maximum permissible weight of the trailer, including the UVW plus passengers, personal items, all cargo, fluids, options, and dealer-installed accessories. The GVWR is equal to or greater than the sum of the UVW and the CCC.

Cargo Carrying Capacity (CCC): CCC means the maximum weight of all passengers, personal items, food, fresh water, propane, tools, other cargo and dealer-installed accessories that can be carried by the trailer. CCC is equal to or less than GVWR minus UVW. The addition of options will decrease the CCC.

Hitch Weight (HW): The hitch weight, as used in product literature and other promotional materials, does not include cargo, fresh water, propane gas, options or dealer-installed accessories. The addition of these types of items will either add to or subtract from the stated hitch weight.

It is important for your safety and enjoyment that your tow vehicle be adequately sized and equipped to tow and handle the GVWR of the RV you select. Review weights and rating of your tow vehicle and consult a competent advisor for questions or advice. Whether you are new to RVing or a veteran, get a feel for the performance of your tow vehicle before heading out on the roadways. When you tow an RV, you must drive differently than when you drive a single vehicle. Practice hooking up, driving, backing up and braking in a safe environment or seek out professional instruction. Jayco affixes a weight label to each RV which lists weight information for that vehicle. See specifications chart above.



EAGLE PREMIER FIFTH WHEEL 361REQS | BROWNSTONE

Eagle Premier

Luxury Fifth Wheels

The name *Eagle Premier* says it all. This extraordinary fifth wheel delivers more premium upgrades than anything in its price range, making it the envy of the campground. Starting in the kitchen and moving into the bathroom, Premier flaunts stunning solid-surface countertops and Amish-crafted cabinetry. Outside, select model exterior kitchens boast a standard 32" LED television.



EAGLE PREMIER 361REQS | BROWNSTONE



EAGLE PREMIER FIFTH WHEEL 361REQS | BROWNSTONE



PREMIUM COMFORT

The Eagle Premier wouldn't be premier without high-end comforts. From the new Heritage Series furniture line to the master suite's cedar-lined, walk-in closet, this fifth wheel has it all.

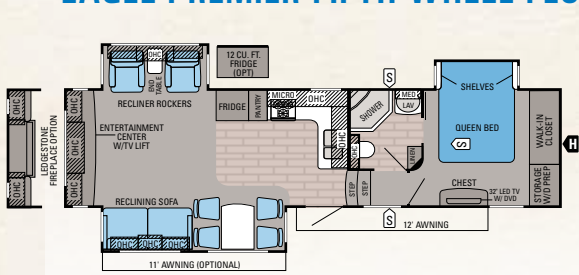


EAGLE PREMIER FIFTH WHEEL 375BHFS | ALMOND



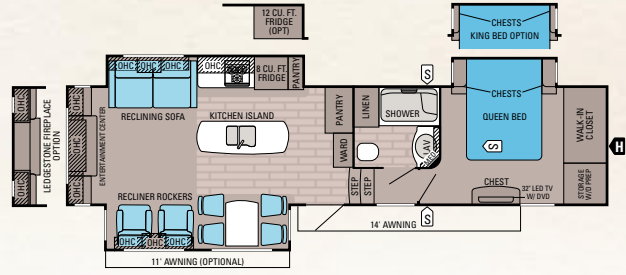
EAGLE PREMIER 361REQS | BROWNSTONE

EAGLE PREMIER FIFTH WHEEL FLOORPLANS



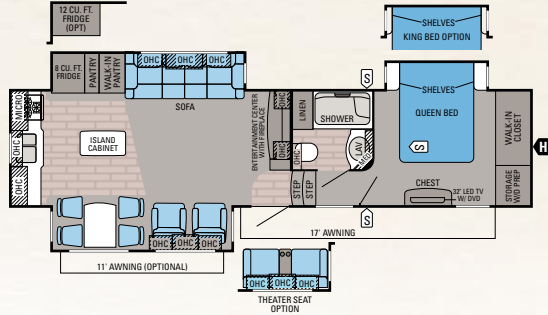
EAGLE PREMIER | 321RLTS

Ext. Length: 34' 3" Ext. Height: 159" Unloaded Weight (lbs.): 10,510 Sleeps: 4-6



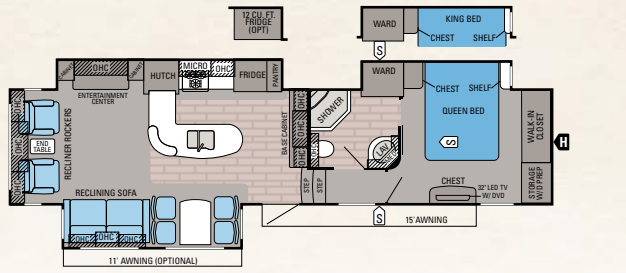
EAGLE PREMIER | 331RETS

Ext. Length: 36' 8" Ext. Height: 159" Unloaded Wt. (lbs.): 11,150 Sleeps: 3-4



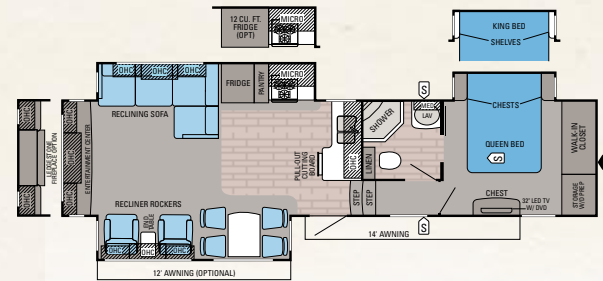
EAGLE PREMIER | 331RKTS

Ext. Length: 36' 5" Ext. Height: 160" Unloaded Wt. (lbs.): 11,045 Sleeps: 3



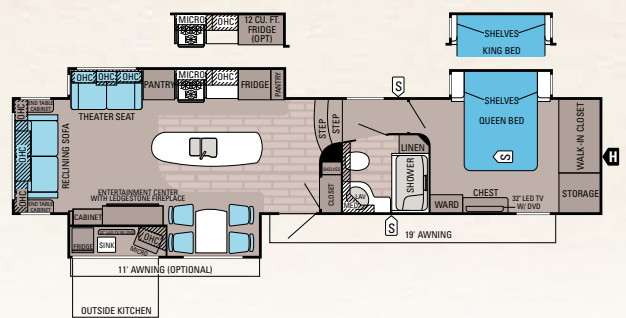
EAGLE PREMIER | 351MKTS

Ext. Length: 38' 4" Ext. Height: 156" Unloaded Wt. (lbs.): 11,275 Sleeps: 4



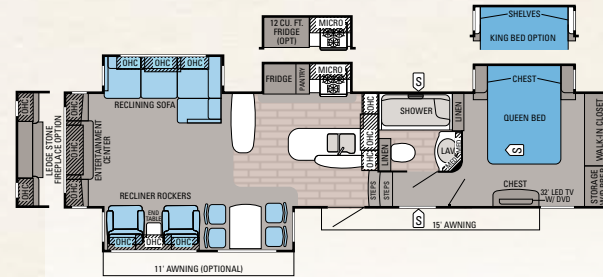
EAGLE PREMIER | 351RLTS

Ext. Length: 37' 5" Ext. Height: 159" Unloaded Wt. (lbs.): 11,340 Sleeps: 4



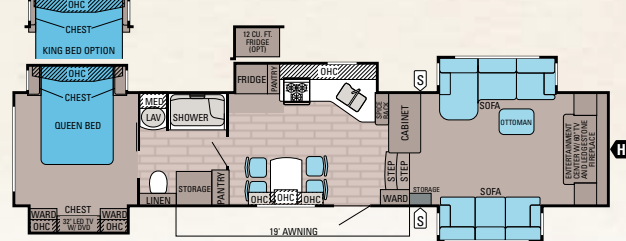
EAGLE PREMIER | 351RSTS

Ext. Length: 40' 9" Ext. Height: 158" Unloaded Weight (lbs.): 12,005 Sleeps: 3



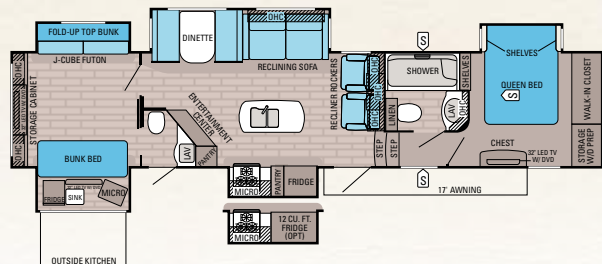
EAGLE PREMIER | 361REQS

Ext. Length: 39' 1" Ext. Height: 156" Unloaded Weight (lbs.): 11,825 Sleeps: 4-6



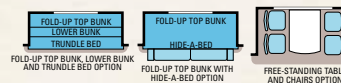
EAGLE PREMIER | 371FLFS

Ext. Length: 42' 4" Ext. Height: 160" Unloaded Wt. (lbs.): 11,860 Sleeps: 4-5



EAGLE PREMIER | 375BHFS

Ext. Length: 41' 9" Ext. Height: 159" Unloaded Wt. (lbs.): 13,005 Sleeps: 8-11



STANDARD EXTERIOR EQUIPMENT

TuffShell vacuum-bonded, laminated walls
Ultra high-gloss, Ivory gel-coat exterior
Aerodynamic front cap with LED lighting
Seamless roof covering
Magnum Truss Roof System with one-piece DiFlex II material
Climate Shield
• Enclosed, insulated, heated underbelly
• High-BTU output furnace
• Astrofoil in roof and floors
10" I-Class cambered, structural I-beams
Completely enclosed and protected slideout mechanisms
Frameless, dark-tinted, safety-glass windows
30" x 72" entry door with oversized window
Heavy-duty entrance step
Front awning arm convenience outlet
16" radial tires
Nev-R-Adjust brakes
E-Z Lube axles
MOR/ryde CRE3000 suspension system
Wide-stance front landing gear
Exterior kitchen with 32" LED TV, sink, refrigerator and microwave (351RSTS and 375BHFS)
Enclosed, protected basement drop frame
Stor-Galore pass-through basement storage with slam latches and strut assist
Cable TV and outlet in basement
Exterior marine-grade speakers (2)
Sliding propane tray with 30-lb. bottles
Dual battery compartment with disconnect
Heated, enclosed Uni-Dock utility center
50-amp power service with detachable cord
35,000-BTU furnace (minimum)
75-gallon fresh water tank
70-gallon gray tank capacity (minimum)
44-gallon black tank capacity (minimum)
Cable/satellite prep
Digital TV antenna
Under-mounted spare tire
Outside grill prep
Frame prepped for rear cargo accessory receiver
Roof ladder

STANDARD INTERIOR EQUIPMENT

Raised-panel cabinetry with screwed construction and hidden hinges
Steel ball bearing drawer guides, 75-lb. capacity, full extension

Hardwood slideout fascias
Large, split, under-mount kitchen sink with covers
Pull-out kitchen faucet
LG brand, high-gloss, solid-surface kitchen countertops
Water heater bypass
8 cu. ft. refrigerator with high-gloss front
Oversized 21" oven with 3-burner cooktop and range cover
Diamondflor deluxe linoleum flooring
Free-standing table and 4 chairs (optional 375BHFS)
90-amp power center with Charge Wizard
Backlit command center for switches with cell phone charger
Floor-level convenience light switch for safe entry
Remote for slideouts, patio awning and patio light
Ceiling fan (n/a 371FLFS)
LED ceiling lights throughout
Ceiling mantle
Closeable and directional A/C vents
Prep for 2nd ducted A/C
Solar prep
46" LED HDTV (60" in 371FLFS)
Recliner rockers (n/a 351RSTS and 371FLFS)
Reclining sofas
Pleated day/night shades (main living area)
6' 5"-tall living area slideouts
One-piece, fiberglass shower with glass doors (select models)
Porcelain bath stool with foot flush
Robe hooks in bath
Deluxe bedding package
Full-trunk, under-bed storage
Walk-in style front closet with dual hanging rods
Combo washer/dryer prep (select models)
Stackable washer/dryer prep (select models)
Floor-to-ceiling bedroom dresser with 32" LED TV/DVD player and opera-style window (n/a 371FLFS)

CUSTOMER VALUE PACKAGE (MANDATORY)

Aluminum rims
Folding exterior grab handle at main entrance
Large patio scare lights (2)
Electric patio awning with LED lighting
30" over-the-range residential microwave
20-gallon/hr. quick recovery gas/electric DSI water heater (10-gallon)
Canister style, in-line water filter
15,000-BTU low-profile Whisper Quiet air conditioner
Arched interior ceiling

Multi-media premium sound system with Bluetooth AM/FM/CD/DVD/MP3 player with toggle switch for outside speakers
Bath power vent
Bath skylight
Denver Mattress Advanced queen-sized (60" x 80") pillowtop mattress
Under-bed floor safe

LUXURY PACKAGE

Kitchen power vent
MOR/ryde pin box
6-point electric auto-leveling system

OPTIONS

Customer Value Package
Customer Value Package with heat pump
Luxury Package
Slideout awnings
2nd electric power patio awning, mounted on slideout (n/a 371FLFS, 375BHFS)
Keyless entry at main entrance
Thermal-pane, tinted, safety-glass windows
Generator prep
5,500-watt gasoline generator (includes prep)
Power cord reel (manual)
Rear cargo accessory receiver
Outside grill
12 cu. ft. refrigerator
30" residential convection microwave with oven
Ledgestone fireplace (321RLTS, 331RETS, 351RLTS, 361REQS) (standard on 351RSTS and 371FLFS)
Fireplace (n/a 351RSTS and 371FLFS)
Theater-seating ILO (2) recliners (331RKTS)
Free-standing table and 4 chairs (375BHFS)
Living-area linoleum (n/a 371FLFS, 375BHFS)
King-sized mattress (select models)
2nd 15,000-BTU low-profile, ducted A/C
Dyson cordless vacuum
Bunk beds with trundle bed on off-doorside (375BHFS)
Bunk bed with hide-a-bed on off-doorside (375BHFS)

EAGLE PREMIER FIFTH WHEEL SPECIFICATIONS

MODELS	DIMENSIONS					WEIGHTS (LBS.)				TANKS (GALS.)		
	EXTERIOR TRAVEL LENGTH*	EXTERIOR WIDTH	EXT. HEIGHT (WITH A/C)	EXT. HEIGHT (WITH OPT. BEDROOM A/C)	INTERIOR HEIGHT	UNLOADED VEHICLE WEIGHT**	DRY HITCH WEIGHT	GROSS VEHICLE WEIGHT RATING	CARGO CARRYING CAPACITY	FRESH (INCLUDES WATER HEATER)	GRAY	BLACK
321RLTS	34' 3"	96"	159"	159"	81"	10,510	2,300	14,500	3,990	85	87	50
331RETS	36' 8"	96"	159"	159"	81"	11,150	2,345	14,900	3,750	85	87	50
331RKTS	36' 5"	96"	160"	160"	81"	11,045	2,250	14,995	3,950	85	87	50
351MKTS	38' 4"	96"	156"	157"	77"	11,275	2,265	14,995	3,720	85	87	50
351RLTS	37' 5"	96"	159"	159"	81"	11,340	2,340	14,995	3,655	85	85	50
351RSTS	40' 9"	96"	158"	158"	81"	12,005	2,445	15,500	3,495	85	95	50
361REQS	39' 1"	96"	156"	158"	81"	11,825	2,475	14,995	3,170	85	70	50
371FLFS	42' 4"	96"	160"	160"	91"	11,860	2,455	15,975	4,115	85	70	44
375BHFS	41' 9"	96"	159"	159"	80"	13,005	2,550	15,975	2,970	85	93	94

*Distance from the pin box to the bumper; total exterior length may be longer. **The weights of certain options and/or option packages are not included in the UVW listed above.

Unloaded Vehicle Weight (UVW): Sometimes referred to as "Dry Weight," UVW means the typical weight of this trailer as built at the factory. The UVW, as used in product literature and other promotional materials, does not include cargo, fresh water, propane, options or dealer-installed accessories.

Gross Vehicle Weight Rating (GVWR): GVWR means the maximum permissible weight of the trailer, including the UVW plus passengers, personal items, all cargo, fluids, options, and dealer-installed accessories. The GVWR is equal to or greater than the sum of the UVW and the CCC.

Cargo Carrying Capacity (CCC): CCC means the maximum weight of all passengers, personal items, food, fresh water, propane, tools, other cargo and dealer-installed accessories that can be carried by the trailer. CCC is equal to or less than GVWR minus UVW. The addition of options will decrease the CCC.

Hitch Weight (HW): The hitch weight, as used in product literature and other promotional materials, does not include cargo, fresh water, propane gas, options or dealer-installed accessories. The addition of these types of items will either add to or subtract from the stated hitch weight.

It is important for your safety and enjoyment that your tow vehicle be adequately sized and equipped to tow and handle the GVWR of the RV you select. Review weights and rating of your tow vehicle and consult a competent advisor for questions or advice. Whether you are new to RVing or a veteran, get a feel for the performance of your tow vehicle before heading out on the roadways. When you tow an RV, you must drive differently than when you drive a single vehicle. Practice hooking up, driving, backing up and braking in a safe environment or seek out professional instruction. Jayco affixes a weight label to each RV which lists weight information for that vehicle. See specifications chart above.

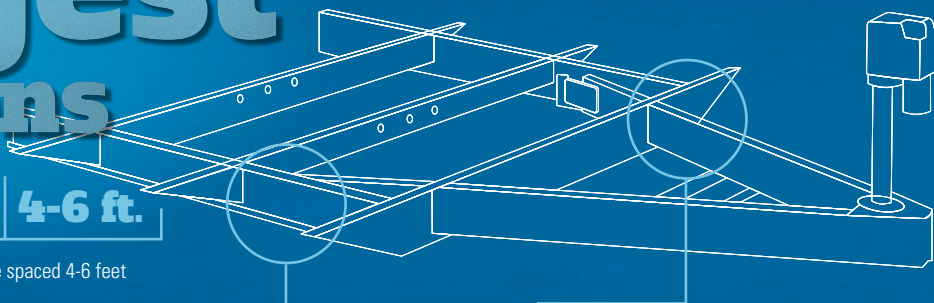
WE START WITH ONE OF THE INDUSTRY'S strongest foundations

4-6 ft.

Full-width outriggers: We build on full-width outriggers that are spaced 4-6 feet apart (vs. 8 ft.) to better support the weight of the wall.

I-Class cambered structural steel I-beams: Jayco uses a unique molded, one-piece design to prevent unit from twisting; competing three-piece I-beams can warp over time at the welded seams.

Jayco builds on custom-sized frames, designed specifically for each floorplan. Other manufacturers use stock frames, stretching and welding the frame to fit.



Eagle travel trailer integrated A-frame: The A-frame runs through the main frame, preventing the hitch from buckling like competing tack-welded frames.

so we can build the industry's most reliable RV



CLIMATESHIELD

The Climate Shield features the following R-values.

Eagle models

(TT, HT, FW)

VALUE	UNIT AREA
R-5	All vertical walls
R-15	Behind front cap
R-27	Roof
R-29	Main floor
R-14	Slide floor
R-22	Bedroom floor
R-14	Inside open pin box

Eagle Premier models

VALUE	UNIT AREA
R-7	All vertical walls
R-11	Behind front cap
R-30	Roof
R-22	Main floor
R-14	Slide floor
R-22	Bedroom floor
R-14	Inside open pin box
R-14	Enclosed drop-frame overhang

Extend your camping season

with the Jayco Climate Shield — the ultimate in weather protection. Designed for efficient heating and cooling, Climate Shield protects against extreme heat and extreme freezing — even when temperatures hit a high of 100° F or a low of 0° F.

LIVING ROOM



KITCHEN



BATHROOM



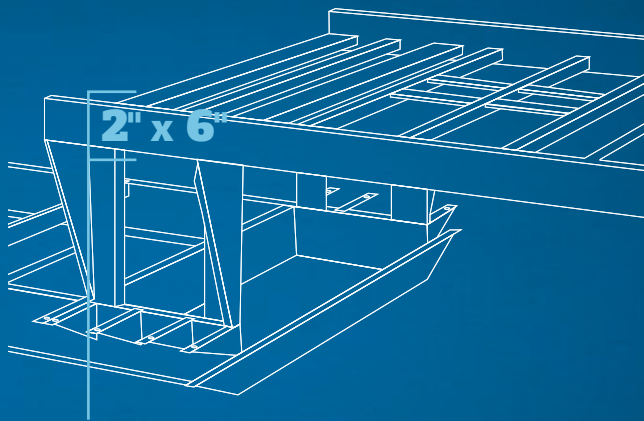
HOLDING TANK



BEDROOM



* Eagle was tested in 0° F and 100° F weather over an extended period of time in a controlled environment and all functions of the coach were fully operational. Testing cannot account for natural elements, such as wind or moisture. In actual use, unit may not perform as well. In addition, outside components are subject to freezing and require steps to properly insulate. Jayco's warranty does not cover damage caused by freezing.



Fifth wheel frame: The frame over the truck bed is built on a superior 2"x 6" tube perimeter structure to better support the bedroom sidewalls. Competing fifth wheels have a smaller frame; these manufacturers add a sidewall support seam to compensate for expansion joints.



THE MAGNUM TRUSS ROOF SYSTEM 50 percent stronger

In a side-by-side comparison test, Jayco's exclusive Magnum Truss Roof System withstood 4,500 lbs. — 50 percent more than other roofs. The difference?

- ① Jayco uses 4 1/2" crowned wood trusses, solid-wood studs and oversized nail plates to maximize the roof's load capacity. (Eagle Premier uses 5" arched, stamped steel.)
- ② Then, we screw down 3/8" roof decking at every seam, a process that is more durable than stapled construction.
- ③ Finally, our one-piece, sidewall-wrapped DiFlex II material provides the ultimate in leak protection.

WALL CONSTRUCTION vacuum-bonded walls



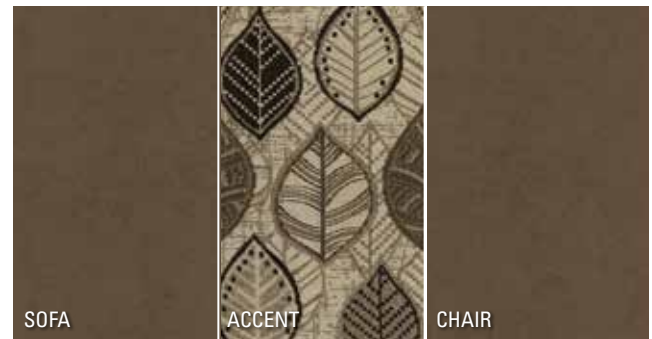
- ④ Eagle features durable, vacuum-bonded, laminated sidewalls with smooth, high-gloss fiberglass exteriors that provide long-lasting appeal.
- ⑤ Welded aluminum frames give Eagle a durable, lightweight structure.

FIFTH WHEEL CONSTRUCTION extra measures for extra warmth

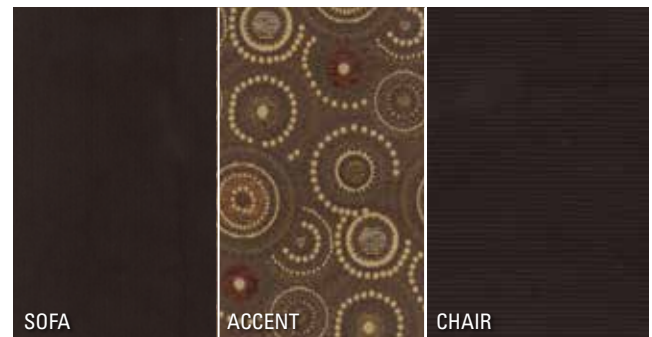
- ⑥ In the upper deck of the fifth wheel floorplan, Jayco uses a double layer of fiberglass insulation behind the front cap, along with Flexfoil and fiberglass insulation in the floor, to provide extra warmth where it's needed most — in the bedroom.
- ⑦ Jayco's aerodynamic front cap is engineered to withstand the rigors of the road. Pigment-infused and gel coated, this fiberglass cap features more support with 1/4" plywood bracing, not typically found on other fifth wheels.

EAGLE INTERIOR DÉCOR CHOICES

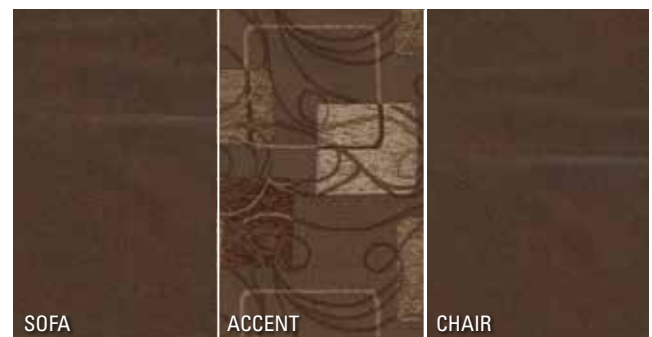
ALMOND



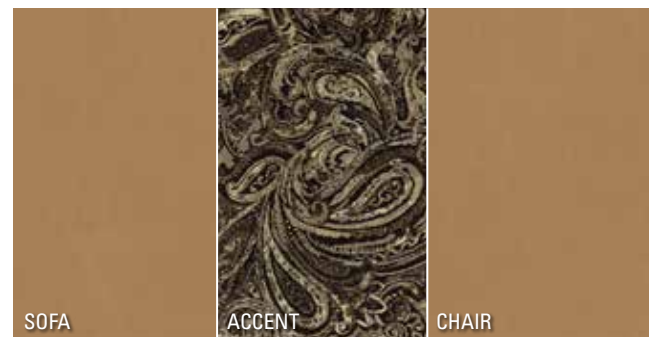
CHESTNUT



BROWNSTONE



HAVANA



RESIDENTIAL SHAW CARPET WITH R2X STAIN AND SOIL RESISTANCE



2
YEAR
WARRANTY



Bumper-to-front limited warranty*

Jayco®

Generations of family fun.

FAMILY **fun** starts with peace of mind

At Jayco, we build our RVs to handle every adventure, then we back our products with an industry-leading 2-year limited warranty. You won't find a better warranty in the business because the only strings we attach are those that deliver the ultimate in reliability. That's the Jayco difference. So go explore. We have the warranty that will follow you anywhere.

*For a copy of our 2-year limited warranty with full terms and conditions, please contact your local Jayco dealer.

FREE Roadside Assistance

Travel worry-free with Jayco's Customer First Roadside Assistance program, yours at no cost during the first year of ownership. This program is offered through Coach-Net, the country's largest RV emergency road service, and gives you immediate access to assistance.

ecoadvantage™

**Jayco's long-term commitment
to generations of family fun**



Scan this QR code with your smartphone to watch a video about our efforts and the impact we're making on our planet.

ecoadvantage.jayco.com

The fun starts with your local Jayco dealer

Your local dealer

From giving advice to selling and servicing products, we consider our loyal dealers the glue in our family bond. Establishing a solid relationship with your local Jayco dealer is a key component in the enjoyment of your new Jayco. By purchasing from a local dealer, you will have a convenient location for sales, parts and service support. We hope you consider them a part of your camping family.

Follow Jayco



Jayco, Inc., P.O. Box 460, Middlebury, IN 46540, www.jayco.com See dealer for further information and prices. All information in this brochure is the latest available at the time of publication approval. Jayco reserves the right to make changes and to discontinue models without notice or obligation. Photos in this brochure may show optional equipment and props for photography purposes. RVs built for sale in Canada may differ to conform to Canadian codes. ©2015 Jayco, Inc. 15-EAGL-PL 0215-10K Printed in U.S.A.