

TRACER

TRAVEL TRAILERS

ULTRA LITE



"NO SACRIFICES"

TRACER



"NORTH AMERICA'S
FAVORITE RV COMPANY!"

PRIME TIME
Manufacturing

www.primetimerv.com

TRACER

"NO SACRIFICES"

For the consumer who is looking for ultra-light weights, but doesn't want to sacrifice style, amenities, and comfort...we've designed the Tracer series travel trailers. The Tracer Executive offers spacious layouts, plush residential furniture, and other high end features not typically seen in an ultra-lite trailer that is often thousands of pounds lighter than traditional trailers!



• Tracer Executive 2850RED

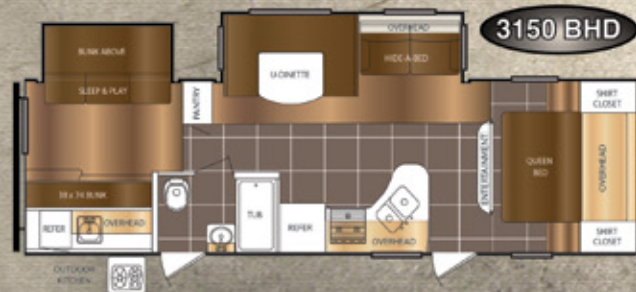
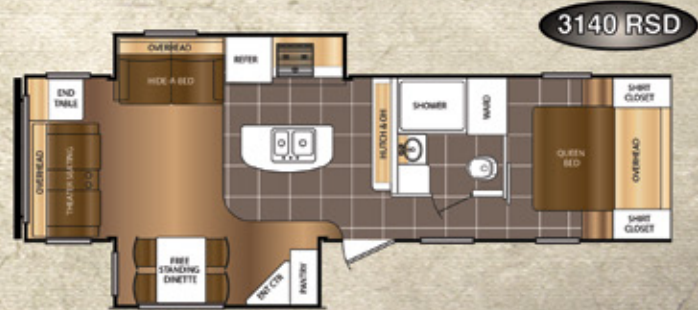
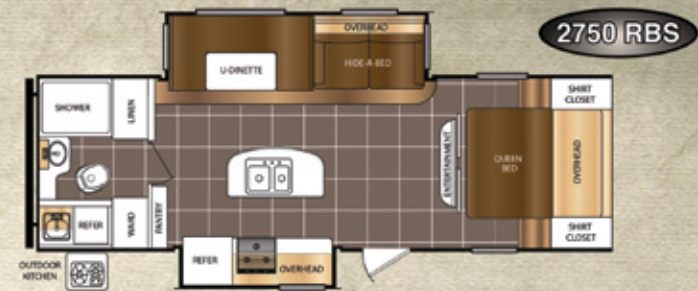
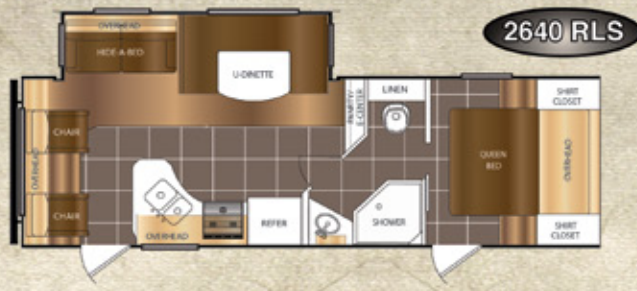
"NO SACRIFICES"

TRACER AIR



• Tracer 235 AIR

For the ultimate easy-tow ultra-lite, take a look at the Tracer AIR! A special breed of travel trailer, the Tracer AIR was designed to be towed by many of today's cross-over and mid-sized SUV's. Featuring Prime Time Manufacturing's exclusive ETERNABOND® Construction, EZ Tow wide track suspension, and durable high gloss fiberglass exterior, the Tracer AIR proves that a camper doesn't have to be light on features to be light in weight! Tracer AIR will allow you to enjoy your next trip while making "NO SACRIFICES" on comfort and convenience.



TRACER

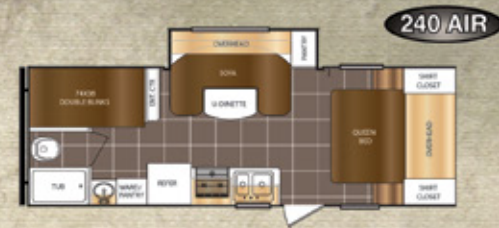
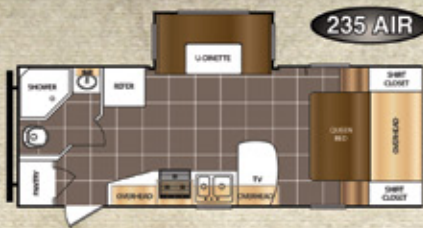
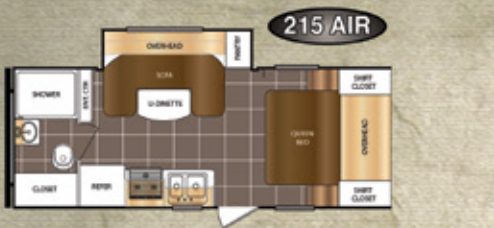
Floorplans and Specifications

The Tracer Executive represents the pinnacle of Ultra-lite innovation featuring wide open, spacious layouts that are often hundreds of pounds lighter than traditional floorplans. The Executive Series offers premium upgrades like Residentially-Inspired Furniture, Electric Awning, an LED Television, Slam Baggage Doors, and a Universal Docking Center. Now you can have all the features and the floorplan of your choice in a lightweight easy-to-tow Tracer Executive.

SPECIFICATIONS	230FBS	2640RLS	2750RBS	2850RED	2990BHD	3140RSD	3150BHD	3200BHT
Length	25' 2"	29' 5"	30' 0"	32' 11"	35' 7"	34' 9"	34' 0"	36' 9"
Height	10' 8"	10' 10"	10' 8"	10' 10"	10' 10"	10' 10"	10' 10"	10' 10"
Hitch	635 lbs.	575 lbs.	675 lbs.	845 lbs.	800 lbs.	823 lbs.	706 lbs.	767 lbs.
Ship Weight	4,920 lbs.	5,693 lbs.	6,285 lbs.	7,046 lbs.	6,947 lbs.	7,154 lbs.	6,955 lbs.	7,467 lbs.
Carrying Capacity	2,677 lbs.	1,792 lbs.	1,353 lbs.	2,562 lbs.	2,563 lbs.	2,431 lbs.	2,755 lbs.	2,063 lbs.

Base Weight - The weight of the unit with no fluids, cargo, optional equipment or accessories.

Carrying Capacity - The amount of weight available for all fluids, cargo, optional equipment and accessories.



Floorplans and Specifications

SPECIFICATIONS	215AIR	235AIR	238AIR	240AIR	250AIR	252AIR	255AIR	270AIR	300AIR	305AIR
Length	23' 10"	26' 7"	26' 11"	26' 5"	28' 11"	28' 2"	26' 6"	30' 5"	32' 8"	33' 2"
Height	10' 3"	10' 8"	10' 8"	10' 3"	10' 3"	10' 3"	10' 8"	10' 8"	10' 8"	10' 8"
Hitch	454 lbs.	550 lbs.	610 lbs.	510 lbs.	495 lbs.	519 lbs.	620 lbs.	606 lbs.	610 lbs.	650 lbs.
Ship Weight	4,098 lbs.	4,676 lbs.	5,140 lbs.	4,550 lbs.	4,907 lbs.	4,954 lbs.	5,038 lbs.	5,643 lbs.	6,070 lbs.	6,381 lbs.
Carrying Capacity	2,314 lbs.	2,836 lbs.	2,432 lbs.	1,902 lbs.	1,151 lbs.	1,128 lbs.	2,544 lbs.	1,925 lbs.	1,503 lbs.	1,232 lbs.

Base Weight - The weight of the unit with no fluids, cargo, optional equipment or accessories.

Carrying Capacity - The amount of weight available for all fluids, cargo, optional equipment and accessories.



The philosophy behind Tracer AIR is quite simple: Build an ultra-lite travel trailer that is easily towed by many of today's smaller SUVs with all of the features that make camping a great experience. Make it a size that will allow you to go anywhere and everywhere. Make it affordable. Simply put: "NO SACRIFICES."

TRACER

ADVANTAGE PACKAGE

UNIVERSAL DOCKING STATION



The Universal Docking Station makes setting up for your camping experience easier than ever, and protects hookups from the elements!

AERODYNAMIC FRONT CAP WITH DIAMOND PLATE PROTECTION



Tracer provides Diamond Plate Protection to protect your investment.

SLAM LATCH BAGGAGE DOORS WITH MAGNETIC LATCHES



You don't have to buy a Diesel Motor Home to get the security and convenience of Bus Style Slam Latch Baggage Doors.

EZ TOW WIDE TRACK SUSPENSION



Tracer offers EZ Tow on most models - another Prime Time innovation designed to minimize "bouncing" while towing.

ETERNABOND® CONSTRUCTION



Tracer is built with Prime Time's ETERNABOND® Construction Technology.

OUTSIDE SPEAKERS



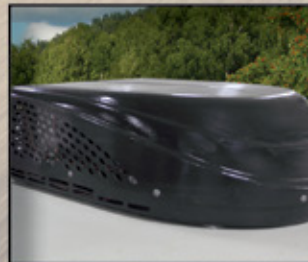
Your entertainment options are multiplied with Tracer's exterior speakers.

BLACK TANK FLUSH



The black tank flush makes emptying the tank a clean, easy process!

DUCTED A/C IN ALL FLOORPLANS



Tracer and Tracer AIR feature residential style ducted A/C for even cooling throughout the unit.

HIGH EFFICIENCY QUICK RECOVERY WATER HEATER



Tracer's high efficiency water heater allows users up to 18 gallons of hot water per hour!

SPARE TIRE WITH CARRIER



Tracer's spare tire affords piece of mind on board your home away from home!

LED TV'S



All Tracers have LED TV's to provide exceptional viewing quality.

8 CUBIC FOOT REFRIGERATORS



Tracer makes NO Sacrifices when it comes to providing customer convenience.

PRIME TIME
Manufacturing

TOURING EDITION 5.0

N/A ON TRACER AIR

LIMITED TIME OFFER

"See your local dealer for details on the availability of Touring Edition 5.0 package".



LED LIGHTED AWNING



HIGH GLOSS FIBERGLASS



POWER TONGUE JACK



LED INTERIOR LIGHTING



STAINLESS STEEL APPLIANCES



R-52 EXTREME THERMAL PACKAGE



FRICTION HINGE DOOR



LADDER



RESIDENTIAL FURNITURE

TRACER STANDARDS & OPTIONS

CONSTRUCTION

- Gel Coated Fiberglass Exterior - AIR/EXEC
- ETERNABOND CONSTRUCTION Featuring:
 - * Laminated Aluminum Framed Side Walls R-11 (AIR R-7) - AIR/EXEC
 - * Laminated Aluminum Framed End Walls R-11 (AIR R-7) - AIR/EXEC
 - * Laminated Aluminum Framed Main Floor - AIR/EXEC
 - * Laminated Aluminum Framed Slideout Walls & Roof R-11 - AIR/EXEC
- 3/8" Walk On Roof Decking With Double Insulation - AIR/EXEC
- Snow Load Approved 5" Truss Rafters - AIR/EXEC
- One Piece Rubber Roof - AIR/EXEC
- **Extreme Thermal Package**
 - * Roof (R-52) Double Layer Fiberglass Insulation & Radiant Foil Insulation - AIR/EXEC
 - * Floor (R-52) Extra Thick Bead Foam Insulation & Radiant Foil Insulation - AIR/EXEC
 - * Cap (R-52) Extra Thick Bead Foam Insulation & Radiant Foil Insulation - EXEC
 - * Enclosed And Heated Underbelly - AIR/EXEC
 - * Heated Holding Tanks - AIR/EXEC
 - * Enclosed And Heated Dump Valves - AIR/EXEC
- 30 AMP Detachable Power Cord - AIR/EXEC
- **Fresh Water Capacity - 48 Gallons (AIR 38 Gallons)** - AIR/EXEC
- **Waste Water Capacity - 30 Gallons** - AIR/EXEC
- **Gray Water Capacity - 30 Gallons (60 Gallons Select Floorplans)** - AIR/EXEC

EXTERIOR FEATURES & EQUIPMENT

- A&E Electric Awning - AIR/EXEC
- (4) 2,500lbs. Rated Manual Stabilizer Jacks - AIR
- (4) 5,000lbs. Rated Manual Stabilizer Jacks - EXEC
- Champagne Hi-Gloss Exterior - AIR/EXEC
- Bus Style Slam Latch Baggage Doors - EXEC
- Huge Pass Thru Storage With Oversized Doors - AIR/EXEC
- Universal Docking Center = UDC - AIR/EXEC
- Battery Disconnect Switch (UDC) - AIR/EXEC
- Black Tank Flush (UDC) - AIR/EXEC
- Outside Shower With Recoil Hose (UDC) - AIR/EXEC
- Spare Tire With Carrier - AIR/EXEC
- Black, Dark Tinted, Radius Safety Glass Windows - AIR/EXEC
- Roof Mounted Antenna - AIR/EXEC
- Cable Ready (UDC) - AIR/EXEC
- Satellite Ready (UDC) - AIR/EXEC
- Outside TV Bracket & Hook-Ups - AIR/EXEC
- Exterior GFI - AIR/EXEC
- LP Quick Connect - AIR/EXEC
- Outside Speakers - AIR/EXEC
- Aerodynamic Fiberglass Front Cap - EXEC
- Front Diamond Plate Rock Guard - AIR/EXEC
- "E-Z Lube" Greasable Axle Hubs - AIR/EXEC
- EZ Tow Wide Track Suspension (AIR Only Deep Slide Models) - EXEC
- Radial Tires - AIR/EXEC
- Amber Porch Light - AIR/EXEC
- Extended Drip Spouts - AIR/EXEC

- Hitch Light - AIR/EXEC
- Outside Kitchen Cook Center
(Select Floorplans) - AIR/EXEC

INTERIOR FEATURES & EQUIPMENT

- Raised Panel Kitchen Overhead Cabinet Doors - AIR/EXEC
- Large LED TV's In All Floorplans - AIR/EXEC
- AM/FM/CD/DVD/Bluetooth Stereo System With MP3 Plug In - AIR/EXEC
- Pre-drilled And Screwed Cabinetry - AIR/EXEC
- Solid Wood Core Cherry Finish Cabinetry - AIR/EXEC
- Satin Nickel Hardware - AIR/EXEC
- Double Bowl Sink With Custom Cover - AIR/EXEC
- Hi Rise Kitchen Faucet - AIR/EXEC
- Spice Rack Valance - EXEC
- Residential Pleated Shades - AIR/EXEC
- Residential Furniture Hide-A-Bed Sofa (Most Models) - EXEC
- Extended Height Toilet With Foot Flush - AIR/EXEC
- Wooden Medicine Cabinet - AIR/EXEC
- Tub/Shower Surround - AIR/EXEC
- Skylight Above Shower (Most Models) - AIR/EXEC
- 12 V Exhaust Fan In Bath - EXEC
- "Evergreen" Select Foam Queen Size Mattress - AIR/EXEC
- Quilted Bunk Matts (Where Applicable) - AIR/EXEC
- Quilted Residential Bedspread - AIR/EXEC

APPLIANCES

- Large 2-Door Refrigerator - AIR/EXEC
- 13,500 BTU Residential Ducted Air Conditioner - AIR/EXEC
- 6 Gal Gas/Electric Water Heater - AIR/EXEC
- Quick Recovery Mode For Water Heater - AIR/EXEC
- Hi Capacity Gas Furnace - AIR/EXEC
- Large Oven - AIR/EXEC
- Range Hood With Light And Exhaust - AIR/EXEC
- 55 AMP Converter - AIR/EXEC
- Water Heater Bypass - AIR/EXEC
- Hi Capacity Water Pump - AIR/EXEC
- Microwave - AIR/EXEC

SAFETY

- CO Detector - AIR/EXEC
- LP Detector - AIR/EXEC
- Fire Extinguisher - AIR/EXEC
- Dual Hitch Safety Chains - AIR/EXEC
- Smoke Alarm - AIR/EXEC

OPTIONS

- Free Standing Dinette With 4 Chairs (Some Floorplans) - EXEC
- 15,000 BTU Air Conditioner - EXEC
- 50 AMP Service With Second A/C Prep
(3140RSD, 2990BHD, 3150BHD, 3200BHT) - EXEC

DSI QUALITY CIRCLE AWARD WINNER - 2010, 2011, 2012, 2013, 2014

Prime Time Manufacturing is proud to be recognized as an industry leader in value, reliability, and overall quality by the Recreational Vehicle Dealers Association. This was accomplished by committing ourselves to "A Higher Standard" in design, construction, testing, and customer service. Check us out - we know you'll be impressed!



Seal Tech Air Pressure Test



ETERNABOND Construction



Rain Bay



Seek-A-Leak Pressure Test



65 Point Secondary PDI



Web Based
Customer Service



Executive Quality Audits



Advanced Engineering



www.primetimerv.com
PO Box 330 • 55470 CR 1 • Elkhart, IN 46515



HERE'S JUST A SAMPLE OF THE BENEFITS*

- ✓ Mobile Mechanic
- ✓ Free Jump Starts
- ✓ Tire Changes
- ✓ \$2000 Trip Interruption
- ✓ Appointment Assistance
- ✓ Lock Out Service
- ✓ Fuel Delivery
- ✓ Service Assistance
- ✓ Custom Trip Routing and Maps
- ✓ 24 Hour Emergency Messaging

*Exclusions and restrictions apply. See member guide for details.

**FROG™ the Forest
River Owners' Group!**

FREE MEMBERSHIP
to Forest River Owners' Group



Forest River, Inc. encourages our customers to purchase their Forest River products from a local dealership whenever possible for the following reasons:

- 1) Forest River, Inc. dealers are independently owned and operated businesses so priority service and scheduling is at their discretion and is often provided to customers that purchased their unit at that dealership.
- 2) Purchasing locally allows customers to establish meaningful relationships with a dealer, enhancing the RV experience through assistance with product questions, user tips or RV regulations for your state or country, and much more!
- 3) Canadian customers must meet requirements to bring an RV purchased out of the country to their home. These requirements may involve additional inspections and certifications, taxes and fees. Your local Canadian Dealer is a professional at meeting these requirements.
- 4) Scheduling timely warranty repairs and adjustments through a local dealership provides far greater flexibility and convenience to you, the customer!

It is the goal of Forest River, Inc. that all of our RV owners fully enjoy the RV experience and that customer satisfaction meets or exceeds their expectations!

All information contained in this brochure is believed to be accurate at the time of publication. However, during the model year, it may be necessary to make revisions and Forest River, Inc., reserves the right to make all such changes without notice, including prices, colors, materials, equipment and specifications as well as the addition of new models and the discontinuance of models shown in this brochure. Therefore, please consult with your Forest River, Inc., dealer and confirm the existence of any materials, design or specifications that are material to your purchase decision.

©2014 Prime Time Manufacturing

A Division Of Forest River, Inc.,
A Berkshire Hathaway Company.
All Rights Reserved



Learn More
Scan this barcode using a QR Reader on your smart phone to learn more about Forest River.



A Berkshire Hathaway company.

DEALER