

DISCOVERY®

DISCOVERY®



2015

CLASS A DIESEL



The journey ahead has never looked better



When life is good, when family and friends come together, when fun times are had by all...Discovery is there, surrounding you with quality and comfort and ensuring you get the most out of every journey. A lifetime of memories awaits you.

Discovery Top Features

- 380HP Cummins® ISL9 Engine
- Molded Fiberglass Roof
- Sony® A/V Electronics
- Sony® LED TVs
- LED Lighting
- 8.0 kW Onan® Quiet Diesel Generator w/Slide
- High-Gloss 24"x 24" Porcelain Floor Tile
- Polished Solid Surface Countertops
- Hardwood Cabinet Doors/Drawers
- Double Roller Shades
- Side Swinging Luggage Doors
- 84" Interior Ceiling Height
- Optional Exterior Pull-Out Grill & Kitchenette
- Frameless Dual Pane Windows

Go to FleetwoodRV.com and build your own Discovery!



Autumn Pecan



Times Square



Vintage Stone

Both inside and out, there is a wide selection of colors, styles and finishes. From the moment you lay your eyes on an Discovery, the high-style graphics and décor collection welcome you with gracious beauty and contemporary design. We've paid attention to every detail. So wherever you are, you'll feel right at home.

AUTUMN PECAN						CABINETY	
SOFA	ACCENT	BEDSPREAD	COUNTERTOP	FLOORING	CARPET		
TIMES SQUARE							
SOFA	ACCENT	BEDSPREAD	COUNTERTOP	FLOORING	CARPET		
VINTAGE STONE							
SOFA	ACCENT	BEDSPREAD	COUNTERTOP	FLOORING	CARPET		

INTERIOR THROUGHOUT

- 20,000/25,000 Btu/h Dual Furnaces (37R, 40G)
- 20,000/30,000 Btu/h Dual Furnaces (40X)
- 25,000/34,000 Btu/h Dual Furnaces (40E)
- 84" Interior Ceiling Height
- Complete PEX Plumbing System
- Crown Molding
- Manual Double Roller Shades
- Deluxe Roller Bearing, Full-Extension Drawer Guides & Transit-Ship Locks
- Solid-Surface Entry-Step w/LED Accent Lights
- Demand Water Pump w/Filter
- Dual Roof-Mounted, High-Efficiency A/C w/Solar Panel, Chill Grills & Bedroom Heat Pump
- Fan-Tastic® Power Roof Vent w/Wall Switch
- Hardwood Cabinet Doors/Drawers
- Stackable Washer & Dryer
- Wall Sconces (Living Area)
- Wall Switches (Includes Switches for Ceiling Lights & Vents)
- Water Heater Bypass
- Whole-Coach Water Filtration System
- Wood Finish Return Air Intake for Furnace
- Central Vacuum System
- Water Heater 16-Gallon Output

Optional

- CSA Package (Canadian Specs)**
- Satellite Radio (Subscription Required)

DRIVER CONVENIENCE

- Adjustable 3-Point Seatbelts at Driver & Front Passenger Seats (w/Adjustable Shoulder Straps)
- Smart Wheel
- Automotive Wrap-Around Dash
- Driver Left-Console w/Lower Storage Bin
- Dual Dash Touch Screen Radio w/Built-In GPS Monitors
- Remote Heated Chrome Power Exterior Mirrors w/Turn Signals & Sideview Cameras
- Auxiliary Start Circuit
- Battery Disconnect System
- Cruise Control
- Front Power Roller Shades/Blinds
- Manual Driver & Passenger Roller Shades/Blinds
- Villa® Driver Passenger Soft-Touch Captain's Chairs w/Reclining Back & 6-Way Power Controls
- Denso® High-Output Auto A/C Heater Combo
- Passenger Armrest w/Integrated Magazine Rack
- Easy-Access Battery Disconnect Switch
- Radio Switch Main/Auxiliary Power
- Tilt/Telescoping Steering Wheel
- 110V Power Outlet at Dash
- (2) 12V Power Outlets at Dash
- Power Passenger Seat Footrest
- USB Charger (Driver Side)
- Power Entry Step Cover

GALLEY

- GE Convection Stainless Steel Microwave Oven w/Built-in Range Hood & Lights
- 3-Burner, High-Output Cooktop w/Sealed Burners
- Adjustable Cabinet Shelves (Select Cabinets)
- Fan-Tastic® Power Roof Vent w/Wall Switch
- Flip-Up Counter Extension (37R)
- Dometic® 12.2 cu.ft. 4-Door Refrigerator w/Icemaker & Water Dispenser
- Galley Faucet w/Pullout Sprayer
- Dinette Base Cabinet w/Free-Standing Chairs
- Solid-Surface Countertop w/Sink & Range Covers
- Under-Galley Shelving & Wastebasket
- Window Over Sink (40E, 40G, 40X)
- Solid-Surface Dinette Tabletop

Optional

- 3-Burner, High-Output Cooktop w/Sealed Burners & Oven
- Dishwasher
- 22 cu. ft. Residential Refrigerator w/Two Additional Batteries & 2800 watt Inverter

LIVING ROOM

- Sony 40" LED HDTV (37R, 40G)
- Sony 48" LED HDTV (40E, 40X)
- Sony 5.1 Home Theater System w/Built-in AM/FM/DVD & Surround Sound Speakers
- Villa® Residential Seat Styling
- TV Antenna
- Wall-to-Wall High Gloss Porcelain Flooring
- Villa Booth Facing Dinette
- U-Shaped Dinette/Sofa (37R, 40G, 40X)
- U-Shaped Dinette/Dual FS Recliners (40X)
- Expandable L-Sofa (40X)
- Expandable L-Sofa w/Jack-Knife Sleeper (37R)
- Desk (40G)
- Electric Fireplace (37R)

Optional

- Sony 32" LED HDTV in Front Overhead

BEDROOM

- King Dream Easy Memory Foam Mattress (40E, 40G, 40X)
- Queen Dream Easy Memory Foam Mattress (37R)
- Sony 32" LED HDTV
- Slide-Out Features
- Overhead Cabinets
- Bedspread w/Décor Pillows
- Coffered Ceiling
- Remote Generator Start Switch
- Rear Wardrobe w/Cedar Lining, Carpeted Floor & Wire Organizer
- Wardrobe Lighting
- Plush Wall-to-Wall Carpet w/Carpet Pad in Bedroom
- Dresser/Vanity w/Second Sink (40G)
- King Air Mattress
- King Bed w/Memory Foam (37R)
- Dual Wardrobe

Optional

- Dual Wardrobe

BATHROOM

- A/C Venting
- Cabinet Toe Kicks
- Fan-Tastic® Power Roof Vent w/Wall Switch
- Glass Shower w/Skylight & Low Threshold
- Hardwood Bath Door/Trims
- Make-Up Lights (Select Models)
- Porcelain Toilet w/Water Saver
- Porcelain Vacuum Flush Toilet (40E)
- Halogen Lighting Over Sink

SAFETY/CONVENIENCE (INTERIOR)

- Carbon Monoxide Detector/Alarm
- Energy Management System (EMS) w/Soft Start
- Fire Extinguisher
- Multiple Seatbelt Locations
- Propane Detector/Alarm
- Smoke Detector/Alarm
- Neutral Loss Protection Standard
- Central Electrical Panel

EXTERIOR THROUGHOUT

- 120V/12V AC/DC Converter
- 2,000-Watt Pure Sine Wave Inverter w/Remote
- Molded Fiberglass Roof
- 4-Point Automatic Levelers
- 50-Amp Service
- 8.0 KW Onan® Quiet Diesel Generator
- Manual Generator Slide
- Awning Rail/Drip Molding (Both Sides)
- Doorside Patio Receptacle
- Dual-Pane Windows w/Screens
- Fiberglass Front Quarter Panels
- Fiberglass Wheel Well Trims
- Full-Body Paint
- Weather Pro Power Awnings (Patio Awning Includes Wind Sensor)
- Fiberglass Front/Rear Caps w/High-Mounted Taillights
- Water Pump Switch (Multiple Locations)
- Heat Pump in 2nd A/C
- Rear Rockguard

Optional

- Exterior Entertainment Center w/Sony® 32" LED HDTV and High Output, Splashproof AM/FM/DVD Sound System
- Solar Electric Panel
- 1st Full Bay 90" Slide Tray
- 1st Full Bay 36"/54" Slide Trays
- 2nd Full Bay 90" Slide Tray
- 2nd Full Bay 36"/54" Slide Trays
- DSS Auto-Locating Stationary Satellite Dish
- DSS Auto-Locating In Motion Satellite Dish
- 3rd Roof A/C (40G, 40X, 40E)
- Exterior Pull Out Grill & Kitchenette
- Satellite Dish Winegard Stationary
- Window Awning Package
- Rear Ladder

AUTOMOTIVE

- Aluminum Wheels
- Fog Lamps
- Mud Flaps
- Color Rear & Side Vision Camera System
- Remote Keyless Entry
- Windshield Wipers w/Wet Arm
- Underhood Utility Light
- Large One-Piece Bonded-in Windshield
- Protective Front Mask

SAFETY/CONVENIENCE (EXTERIOR)

- 20' Sewer Hose
- ABS Brakes
- Automotive Safety Glass
- Daytime Running Lights
- Easy Sweep Flooring at Entry Step
- Entry Door w/Screen Door & Deadbolt Lock
- Four 6V/Deep-Cycle House Batteries
- Lighted Entry Assist Handle
- Power Entry Step
- Toilet Tank San-T-Flush™ System
- Touch Sensor Tank Monitoring System
- Utility Compartment w/Exterior Shower
- Rear Side Marker Lights
- Automatic Generator Start System

STORAGE

- Large Lighted Roto- Molded Polyethylene, Side Swing, Insulated Aluminum Luggage Doors w/Single Paddle Latch & Corrosion Resistant Steel Hinges
- Continuous One-Piece Compartment Bulb Seal
- Pass-Through Storage

BODY STRUCTURE

- Aluminum Interlocking Floor/Wall/Ceiling Framing
- Molded Fiberglass Roof
- Heated Water & Holding Tank Compartments
- Quiet Cool Ducted A/C
- Vacu-Bond® Upper/Lower Floors, Walls & Ceilings
- Power Bridge® Chassis Construction

*Not all options are available on all floor plans. See your Fleetwood dealer for details.
**CSA standards may require substitution or deletion to achieve conformance.

NEW



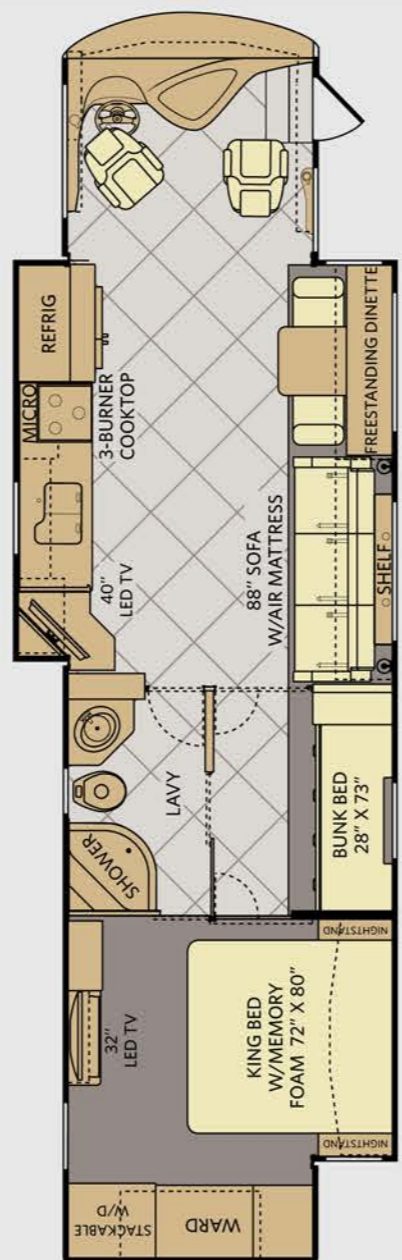
37R

Available options: 087, 093, 107, 113, 139, 144, 191, 830, 854, 883



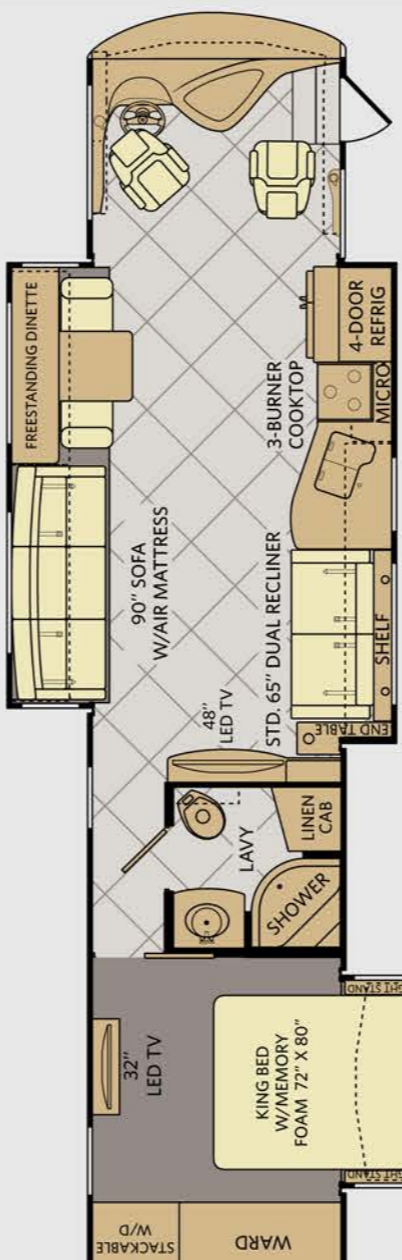
40E

Available options: 087, 093, 107, 113, 144, 856



40G

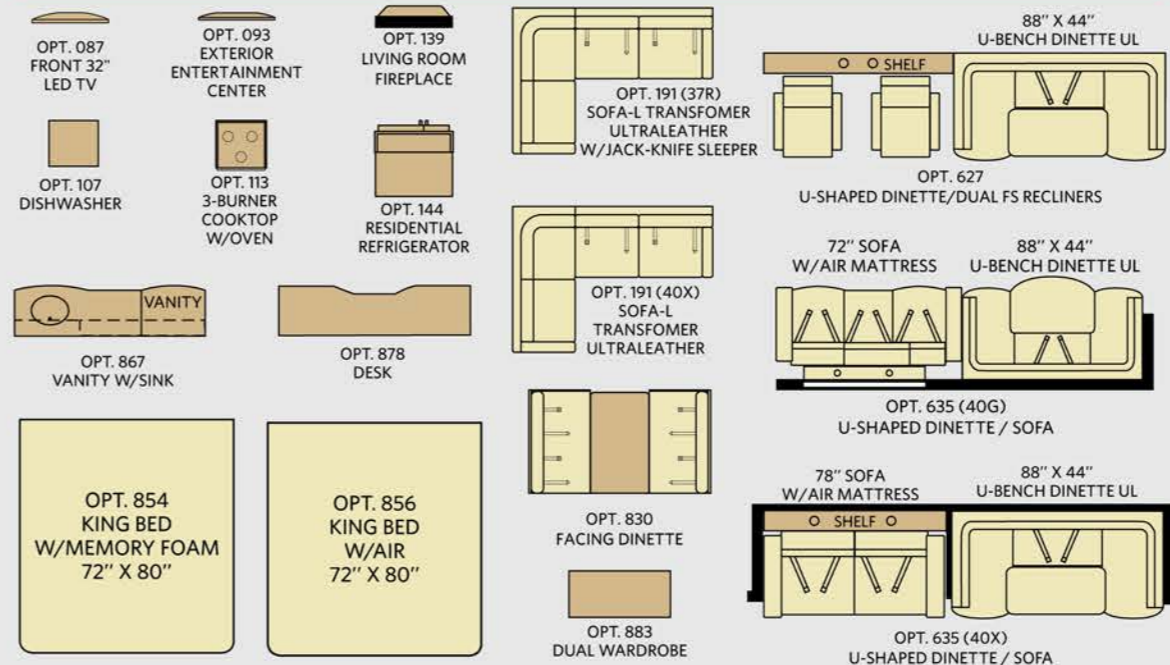
Available options: 087, 093, 107, 113, 144, 635, 830, 856, 867, 878



40X

Available options: 087, 093, 107, 113, 144, 191, 627, 635, 830, 856

FLOOR PLAN OPTIONS



- Addendums
- GVWR (Gross Vehicle Weight Rating) is the maximum permissible weight of this fully loaded motorhome. The GVWR is equal to or greater than the sum of the (UVW) unloaded vehicle weight plus the (OCCC) occupant cargo-carrying capacity*.
 - GAWR (Gross Axle Weight Rating) is the maximum permissible loaded weight a specific axle is designed to carry.
 - GCWR (Gross Combined Weight Rating) is the value specified by the motorhome manufacturer as the maximum allowable loaded weight of this motorhome with its towed vehicle. Towing and braking capacities may be different. Refer to Fleetwood and chassis manufacturer's manuals for complete information.
 - Length measured from front bumper to rear bumper (excludes accessories).
 - Excludes safety equipment and awnings.
 - Motorhomes feature a body width over 96" which will restrict your access to certain roads. Before purchasing, you should research any state and/or province road laws which may affect your usage.
 - Tank manufacturer's listed water capacity (WC). Actual propane capacity is 80% of water listing as required by the safety code.
- * The chassis manufacturer recommends the installation of a supplemental brake control system to activate the brakes on the vehicle or trailer you are towing. Hitch receiver ratings expressed are maximum for the hitch receiver installed and may require the purchase of additional equipment that is dependent on the weight of the towed load. Consult with hitch receiver manufacturer for further information.
- * UVW and OCCC are found on the label containing the federal certification tag in each RV.

MODELS	POWER BRIDGE®			
	37R	40E	40G	40X
Wheelbase (inches)	245"	276"	276"	276"
GVWR (lbs) ¹	33,400	33,400	33,400	33,400
Front GAWR (lbs) ²	12,400	12,400	12,400	12,400
Rear GAWR (lbs) ²	21,000	21,000	21,000	21,000
GCWR (lbs) ³	43,400	43,400	43,400	43,400
Hitch Rating Weight (lbs) ¹	10,000	10,000	10,000	10,000
Tongue Weight (lbs) ⁴	1,000	1,000	1,000	1,000
Fuel Capacity (gal)	100	100	100	100

POWER BRIDGE® CHASSIS

Model: Freightliner® XCS Series
 Engine: Cummins® ISL9
 Transmission: Allison® 3000 MH 6-Speed w/Electronic Shifter

Alternator: Delco Remy 160 Amp
 Torque: 1,150 lb-ft @ 1,400 RPM
 Horsepower: 380HP

DIMENSIONS & CAPACITIES

MODELS	37R	40E	40G	40X
Overall Length (inches) ⁴	38' 8"	41' 4"	41' 4"	41' 4"
Overall Height (with A/C)	12' 10"	12' 10"	12' 10"	12' 10"
Overall Width (maximum) ^{5, 6}	102"	102"	102"	102"
Interior Height (maximum)	84"	84"	84"	84"
Interior Width (maximum)	96"	96"	96"	96"
Interior Storage (cu. ft.)	163	197	166	197
Exterior Storage (cu. ft.)	126	208	208	208
Patio Awning Width	14'	13'	19' 6"	14' 6"
Fresh Water Holding Tank (gal)	100	100	100	100
Grey Water Holding Tank (gal)	75	75	75	75
Black Water Holding Tank (gal)	50	50	50	50
Appliance Propane Tank (gal) (WC) ⁷	38.7	38.7	38.7	38.7
Water Heater Tank (gal)	10	10	10	10



WHY FLEETWOOD?



Quality

There's no cutting corners. Skilled craftsmen build every Fleetwood RV for maximum durability and longevity.



Trust

More people trust Fleetwood RV. After all, we've spent over 60 years perfecting RVs, earning the loyalty of generations of RVers.



Passion

We're truly passionate about the RV lifestyle. Fleetwood RV was founded by RV enthusiasts, and that tradition continues today.



Safety

You've got precious cargo. So we've engineered dozens of innovative safety features into our motor homes to give you more peace of mind.



Service

Help is nearby with 24/7 emergency roadside assistance through **Coach-Net**.^{®*} And when you need an upgrade or repair, you'll find Fleetwood RV dealers all across North America ready to assist you.



Warranty

Exclusive RV ownercare warranty.
See your Fleetwood RV dealer for details.

^{**}All 2015 Fleetwood RV motorhomes include a 1-year emergency roadside assistance membership. For complete info, see your Fleetwood RV dealer.



ALLIED RECREATION GROUP



Visit FleetwoodRV.com.



RV OWNERCARE**

Limited one-year/15,000-mile coach warranty and three-year/45,000-mile structural warranty, whichever occurs first, and it is fully transferable for the first 12 months. RV OWNERCARE is one of the RV industry's most comprehensive programs and includes systems, appliances, components and construction, with no deductible and no service charge. RV OWNERCARE coverage is provided by a company that will be around in the future to service your needs. See your nearest Fleetwood RV dealer for a full explanation of benefits and restrictions.

CONTACT US

To locate a dealer near you, visit our website at www.fleetwoodrv.com or call 1-800-322-8216. We can also be contacted at Fleetwood RV Customer Relations, P.O. Box 1007, Decatur, IN 46733.

FLEETWOOD RV MOTOR HOME CLUBS

As a Fleetwood RV owner, you're invited to become a member of several Fleetwood RV motor home clubs. Becoming a club member is the perfect way to meet other Fleetwood owners who love to travel across America and share in the RV lifestyle. Visit our website at www.fleetwoodrv.com/owners_clubs to learn more and join the fun.

IMPORTANT—PLEASE READ: Product information, photography and illustrations included in this publication were as accurate as possible at the time of printing. For further product information and changes, please visit our website at www.fleetwoodrv.com or contact your local Fleetwood RV dealer. Prices, materials, design and specifications are subject to change without notice. All weights, fuel, liquid capacities and dimensions are approximate. Fleetwood RV has designed its recreational vehicles to provide a variety of uses for customers. Each vehicle features optimal seating, sleeping, storage and fluid capacities. The user is responsible for selecting the proper combination of loads (i.e., occupants, equipment, fluids, cargo, etc.) to ensure that the vehicle's capacities are not exceeded.

YOUR LOCAL FLEETWOOD RV DEALER IS: