

WILDWOOD DLX LODGE

PROMOTING FUN AND VALUE FROM OUR FAMILY TO YOURS.

WILDWOOD DLX LODGE

PROMOTING FUN AND VALUE FROM OUR FAMILY TO YOURS.



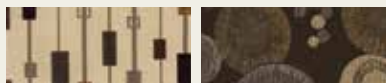
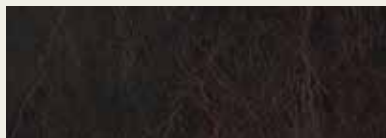


DLX 39FDEN

Offering Your Family an Inviting Campsite Home.

39FDEN

SHOWN IN COGNAC LEATHER



FROM OUR FAMILY TO YOURS.

Wildwood travel trailers have been on the road since 1996, the year that Forest River Inc. was founded. Since the production of our first trailer, we have grown to operate out of four different plants while offering six lines of travel trailers and fifth wheels, including Wildwood LEs, Truth North Ice Lodge, X-lite, Heritage Glen and Lodge destination trailers.

The Wildwood team values the loyalty of our people. Including all of our employees, dealers and valued customers, we have a vision to protect what matters. From first time RV buyers to second and third time Wildwood owners, we appreciate the opportunity to serve you with a quality product, at a reasonable price.

At Wildwood, it is our mission to offer a product for all towable buyers. From light weight, weekend campers to

full size, destination trailers, we have it! As we remain customer focused, throughout each product line, we are committed to supplying products of the highest quality.

A number of our employees and dealers have been a part of the Wildwood team since its start in 1996, and an even greater amount hold a tenure of 10+ years. Day after day, we receive a growing amount of applications of hardworking folks looking to join our dedicated team. The significant amount of employees, dealers and customers to join the Wildwood team continues to create an exciting and optimistic future for our brand.

Thank you for your loyalty!

The Wildwood Team

EXCELLENT CRAFTSMANSHIP

Our skilled craftsmen have years of experience building beautifully finished cabinetry.



DLX T400FLT

Open Concept with Opposing Slides

Shown with optional TV

400FLT

SHOWN IN CHOCOLATE



4 Burner Free Standing Range with
20" x 20" Oven Door



Cathedral Ceiling with Residential
Ceiling Fan and Light



Foot flush toilet



The image shows the interior of a Lodge 404X4 RV. On the left is a kitchen with wooden cabinets, a black stove, and a sink with a curved faucet. In the center is a hallway leading to a back door. On the right is a dining area with a wooden table, four chairs with patterned upholstery, and a large window with a view of a desert landscape. A brown sofa with a patterned pillow is in the foreground on the right.

LODGE 404X4

Enjoy The View. All Lodge Models
Come with a Deluxe Window Package.

404X4

SHOWN IN SOAPSTONE



Whole Unit Water Filtration System



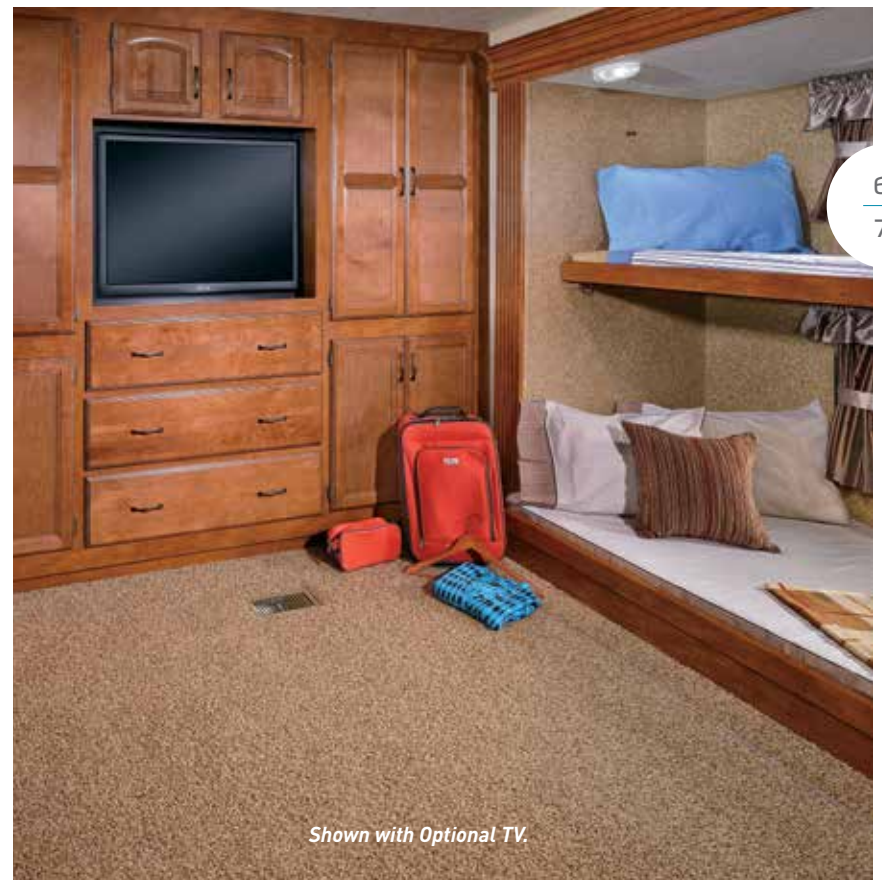
Comfort Flex Bed Frame



Deluxe Window Package



Shown with Optional Outside Kitchen.



Shown with Optional TV.



The image shows the interior of a motorhome, specifically the rear living and kitchen area. On the left, there's a dining table with a patterned chair and a plate of fruit. In the center, two dark leather recliners face a large window with brown curtains, which looks out onto a forest. To the right, a kitchen island with a light-colored countertop and a wooden base holds a sink with a high faucet, some fruit, and a loaf of bread. The kitchen cabinets are made of wood and feature glass-paned doors. A television is mounted in a niche above the island. The floor is covered in a light-colored carpet, and the walls have a wood-grain finish.

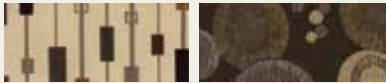
LODGE 393RLT

Rear Living Island Kitchen

Shown with Optional TV.

393RLT

SHOWN IN COGNAC LEATHER



Night Shades
(Standard on all models)



Shaw Stain Resistant Carpet
With R2X Protection



Free Standing Table and Chairs
(Optional on DLX, standard on LODGE models)



WILDWOOD DLX STANDARDS & OPTIONS

COMFORT AND CONVENIENCE

84" interior height
Black framed tinted safety glass windows
Powered self supporting slide rooms
Pleated night shades
Triple sealed slide outs
Water heater by-pass
16-gallon per hour quick recovery DSI water heater
Ducted Dometic® 13,500 BTU central air conditioner w/ quick cool feature
In-floor ducted heat w/ 35K BTU furnace
Stain resistant carpet with padding
Flush-floor slide rooms
Systems monitor panel
6' 2" tall slide rooms
Ultra lube axles
Solid wood drawer fronts with ball bearing drawer guides
2 outside speakers
IVC Brand flooring

KITCHEN

Extra large overhead cabinets
Raised panel overhead cabinet doors
18.5 cu. ft. residential refrigerator with ice maker
12-volt power range hood w/ light
Microwave w/ carousel
Acrylic 60/40 residential style kitchen sink
Built in knife holder behind stove
3 burner Piezo ignition range oven
Pull out sprayer faucet at kitchen sink
Kitchen waste basket
Pantry with shelves

LIVING ROOM

Swivel rocker chair (per floorplan)
DVD/CD/FM stereo w/ mp3 hook-up
Cathedral ceiling w/ ceiling fan
Surround sound w/ TV hook-up
Digital TV antenna w/ booster
Cable and satellite ready
Extra large picture window at dinette
Extra large dinette for more comfortable dining and sleeping
Decorative lights in slide-out

BEDROOM

Serta Bradley mattress
Fitted bedspreads and headboard
Lift-up beds w/ gas struts
Cable TV hook-up
Stain resistant carpet w/ padding
Solid privacy doors

BATHROOM

Built-in wood medicine cabinet and mirror
Ceiling light w/ convenient wall switch
Foot flush toilet(s)
ABS tub or shower w/ one-piece surround

EXTERIOR

Smooth fiberglass radius baggage doors w/ thumb pulls and holdbacks
Cold crack and mildew resistant vinyl patio awning
Patio door w/ screen
Steel framed 30" smooth fiberglass radius entry door

15" radial tires
(16" with optional fiberglass exterior)
Entry assist handle
2-30 lb. LP tanks w/ automatic change over & EZ access LP cover
City water fill

CONSTRUCTION

10" Extruded I-beam frame
Cambered chassis
Fresh water tank
2" x 3" floor joists 12" on center
5/8" 5-ply tongue and groove plywood floor decking
2" wall studs maximum 16" on center
5" bowed truss roof rafters
3/8" walk-on roof decking
R-7 insulation
Seamless one piece roof w/ 12 year warranty

SECURITY AND SAFETY

Smoke detector
Fire extinguisher
Carbon monoxide detector
LP gas leak detector
Amber porch light w/ interior switch
Screen door w/ safety latch
GFI receptacles and covered patio outlet
Welded heavy duty safety chains
Hitch light
Lockable fiberglass radius baggage doors
ANSI 119.5
Certified to meet all national highway traffic safety administration specs.

WILDWOOD OPTIONS

Gel coat fiberglass exterior
10-gallon gas/electric DSI water heater
Skylight over tub
Air hide-a-bed sofa
Outside kitchen (402QBQ only)
Free standing dinette w/ 4 chairs
Outside shower



CONSTRUCTION BUILT TO LAST.

1 Radius triple entry steps

2 102" exterior width for increased living space (96" on DLX Models)

3 Tinted Windows

4 Hitch Light

5 Standard patio door

6 15" radial tires (16" with opt. fiberglass exterior)

7 12" I-beam powder coated plywood flooring

8 5/8" tongue and groove plywood flooring

9 Carpet w. padding

10 Fender skirt

11 2" wall studs 16" on center

12 15K BTU A/C (13.5K on DLX)

13 Seamless one-piece roof (12 yr. warranty)

14 3/8" roof decking (full walk-on roof)

15 R-7 fiberglass insulation throughout

16 Dual bottle cover w/ easy access

17 5" truss roof rafters 16" on center

18 Scare light

19 0.24 aluminum siding (fiberglass opt.)

20 84" interior height (DLX, Lodge)

10
11



A Seamless Roof

B Hot water heater (20 Gallon std. on Lodge Only.)

C Wildwood 5/8" tongue and groove plywood v.s competition OSB

D Comfort Flex Bed Frame

LODGE STANDARDS & OPTIONS

COMFORT AND CONVENIENCE

102" exterior width for increased living space
84" interior height
Frost proof garden hose spigot (off door side)
Black framed tinted glass windows
WaterPur™ whole house water filtration system
Water heater by-pass
Wired and braced for second A/C
Pleated night shades
20-gallon electric water heater
Ducted Dometic® 15,000 BTU central air conditioner w/ quick cool feature
In-floor ducted heat w/ 40K BTU furnace
Shaw stain resistant carpet w/ padding
Flush-floor hydraulic slide rooms w/ manual override
Systems monitor panel
50 amp electrical service and 65 amp 12-volt converter
Solid hardwood drawer fronts

KITCHEN

Free standing dinette with 4 chairs
Deluxe window package at dinette
Extra large raised panel overhead cabinets
Full extension ball bearing drawer guides
18.5 cu. ft. residential electric refrigerator w/ icemaker (black)
Microwave w/ carousel and range hood (black)
Hidden storage beneath dinette seat cushions
Undermount stonecast 60/40 residential style sink
Pull out sprayer faucet
Pantry with shelves
Self-edge countertops throughout

LIVING ROOM

Swivel rocker chair(s) (per floorplan)
Surround sound TV hook-up
DVD/CD/FM stereo with
4 cube speakers and sub woofer
Cable and satellite door side hookup
Glass sliding patio door with vertical blinds and screen door
Coordinating wallpaper border
Ceiling fan w/ wall switch

BEDROOM

Serta "Dreamscape" Mattress
Bedspread and headboard
Bedroom roof vent
Ceiling fan with wall switch
Comfort Flex (box spring) bed frame
Under bed storage
Cable TV hook-up
Shaw Stain resistant carpet w/padding
Solid privacy doors

BATHROOM

Neo-Angle shower with glass door
Built-in wood medicine cabinet and mirror
Ceiling light w/ convenient wall switch
Full extension ball bearing drawer guides
Foot flush toilet(s)
ABS shower w/ one-piece surround
12" 10-blade Fantastic Bath Fan
Toothbrush holder and shower ring

EXTERIOR

Smooth fiberglass radius baggage doors
Cold Crack and mildew resistant vinyl awning

15" radial tires (per floorplan)
(16" w/optional fiberglass exterior)
30 lb. double LP tanks w/ automatic change over
EZ access LP tank cover
City water fill w/ brass valve
Swing out assist handle
Two exterior speakers

CONSTRUCTION

12" forged I-beam frame
Cambered chassis
Seamless holding tanks
Color coded water lines
2" x 3" floor joists 12" on center
5/8" 5-ply tongue and groove plywood floor decking
2" wall studs maximum 16" on center
5" bowed truss roof rafters
3/8" walk-on roof decking
Seamless one-piece roof w/ 12 year warranty
Triple sealed slide outs
R-7 insulation throughout (floors, walls, ceilings, and slide-outs)

SECURITY AND SAFETY

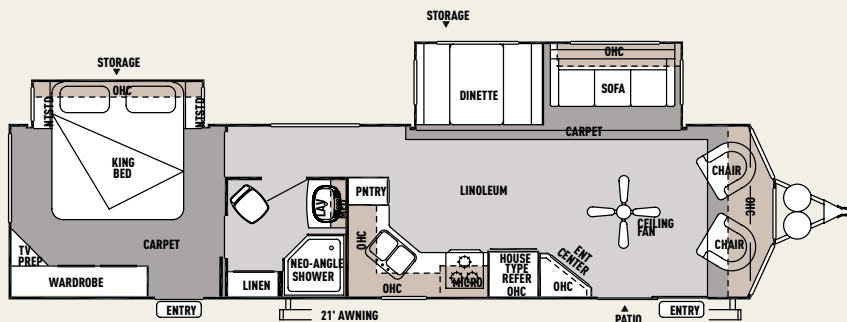
Smoke detector
Fire extinguisher
Carbon monoxide detector
LP gas leak detector
Door latch w/ integral dead bolt lock
Lighted main entry step w/ interior switch
Amber porch light w/ interior switch
Main entry doorside flood light
GFI receptacles and covered patio outlet
Welded heavy duty safety chains
Hitch light
Lockable fiberglass radius baggage doors

ANSI 119.5

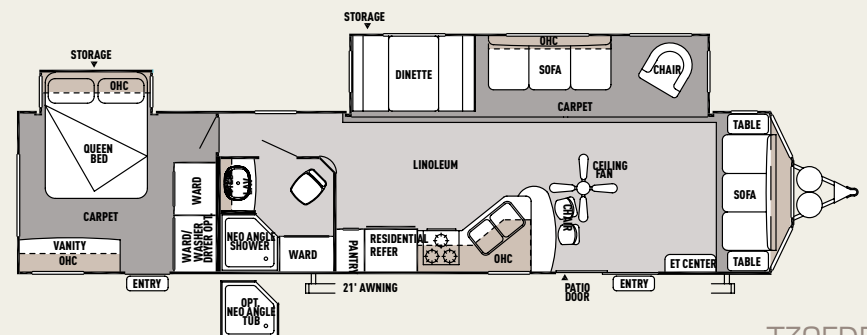
Certified to meet all National Highway Traffic Safety Administration Specifications

POPULAR OPTIONS

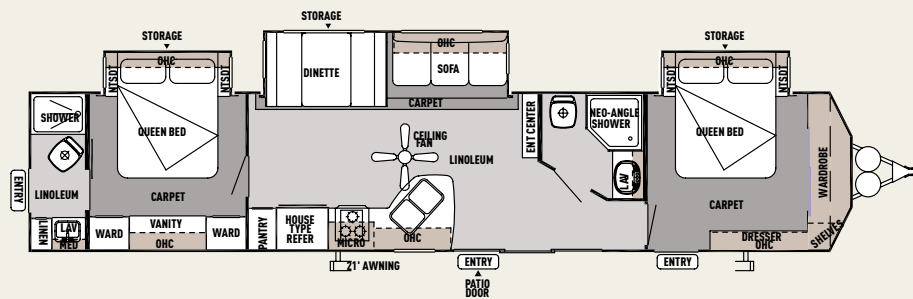
Gelcoat fiberglass exterior
Skylight over tub
Garden tub w/ glass door (per floorplan)
La-Z-Boy® living room furniture (a Forest River exclusive)
Detachable hitch
Outside shower
10-gallon gas/electric DSI water heater (IPO 20 gal electric)
Contemporary exterior graphics
Hardwood booth table top at dinette
Oven with folding glass top (classics only)
4 burner apartment sized range (Estates)
Bay front
(2) 110v exterior lights on front bay closet ipo window. (front models only)
Less carpet, more linoleum
IVC plank wood linoleum
Non-directional TV antenna
Air hide-a-bed sofa



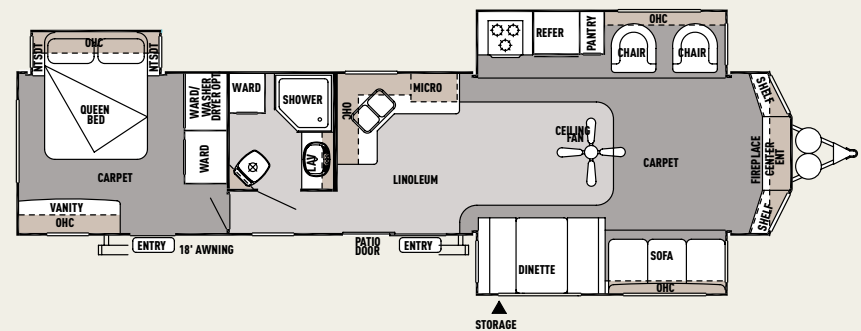
T353FLFB



T39FDEN



T4002Q



T400FLT

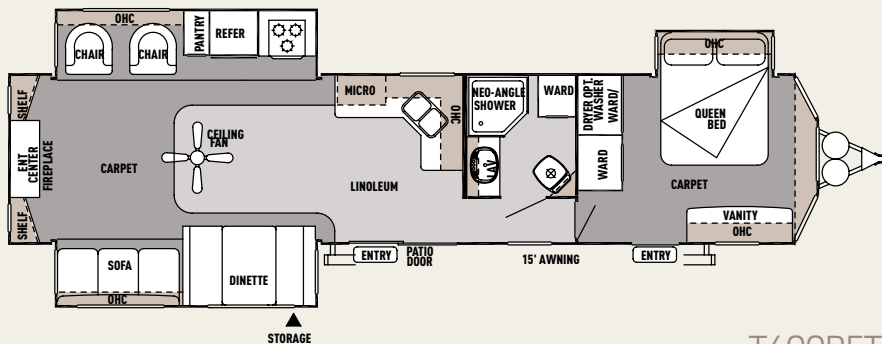
WILDWOOD DLX TRAVEL TRAILERS

	T353FLFB	T39FDEN	T4002Q	T400FLT
HITCH WEIGHT (LBS.)	1290	1362	1260	1490
AXLE WEIGHT (LBS.)	7330	8363	8980	8480
DRY SHIP WEIGHT (LBS.)	8620	9725	10240	9970
CARGO CARRYING CAPACITY (LBS.)	2770	1737	1121	1620
EXTERIOR LENGTH	38' 6"	40' 10"	43' 5"	40' 9"
EXTERIOR HEIGHT	12' 3"	12' 3"	12' 3"	12' 3"
FRESH WATER CAPACITY (GAL.)	39	39	39	39
BLACK WATER CAPACITY (GAL.)	30	40	70	43
GREY WATER CAPACITY (GAL.)	40	40	80	43
AWNING SIZE (FT.)	21'	21'	21'	21'

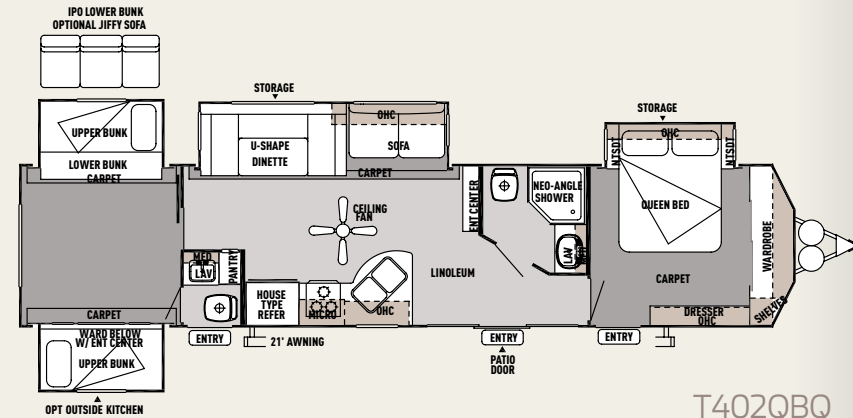
FLOORPLAN KEY

OHC	OVERHEAD CABINET
WARD	WARDROBE
MICRO	MICROWAVE
LAV	BATHROOM SINK

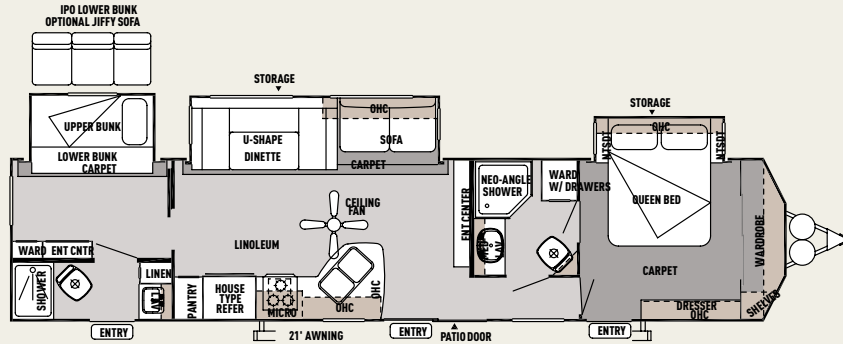
Pillows and blankets shown on beds and bunks are for demonstration purposes only and do not come with your new coach.



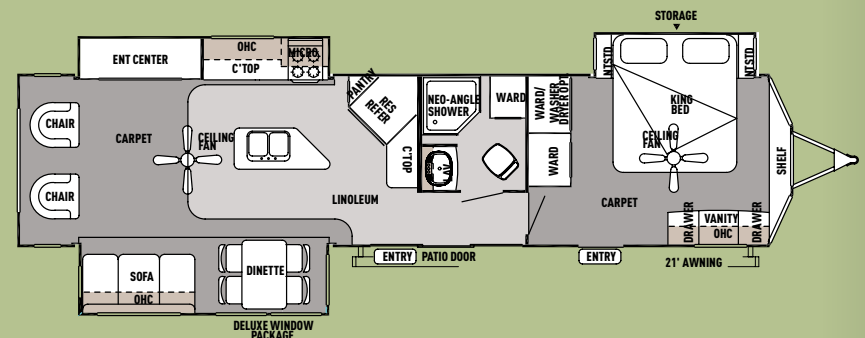
T400RETS



T402QBQ



T426-2B



T393RLT

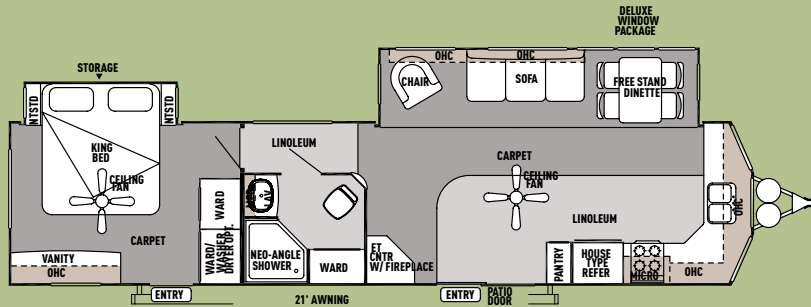
WILDWOOD DLX/LODGE TRAVEL TRAILERS

	DLX			LODGE				
	T400RETS	T402QBQ	T426-2B	T393RLT	T394FKDS	T404FB	T404X4	T407REDS
HITCH WEIGHT (LBS.)	1375	1075	1365	1492	1555	1120	1385	1330
AXLE WEIGHT (LBS.)	8685	9510	8810	9168	8520	10160	9315	8930
DRY SHIP WEIGHT (LBS.)	10060	10585	10175	10660	10075	11280	10700	10260
CARGO CARRYING CAPACITY (LBS.)	1415	2431	1290	2773	1581	1780	2626	3010
EXTERIOR LENGTH	40' 9"	40' 8"	40' 5"	40' 5"	40' 10"	41' 0"	41' 11"	39' 11"
EXTERIOR HEIGHT	12' 3"	12' 3"	12' 3"	10' 9"	11' 9"	10' 9"	10' 9"	10' 9"
FRESH WATER CAPACITY (GAL.)	42	39	39	39	39	50	39	39
BLACK WATER CAPACITY (GAL.)	43	70	62	40	30	70	30	40
GREY WATER CAPACITY (GAL.)	43	80	80	80	80	80	80	40
AWNING SIZE (FT.)	15'	21'	21'	21'	21'	21'	21'	18'

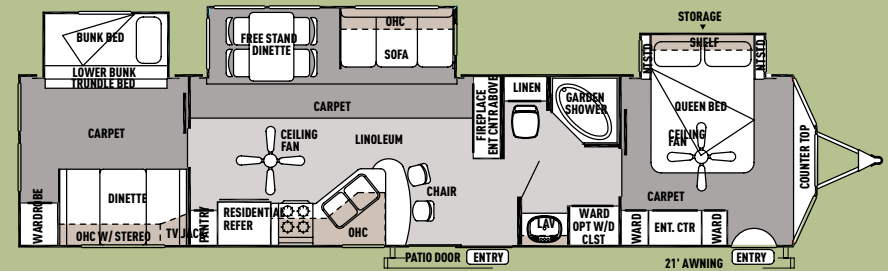
FLOORPLAN KEY

OHC	OVERHEAD CABINET
WARD	WARDROBE
MICRO	MICROWAVE
LAV	BATHROOM SINK
	DLX FLOORPLAN
	LODGE FLOORPLAN

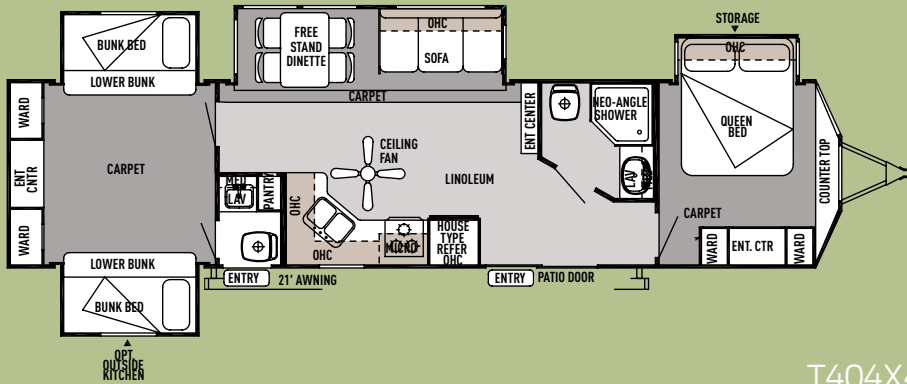
Pillows and blankets shown on beds and bunks are for demonstration purposes only and do not come with your new coach.



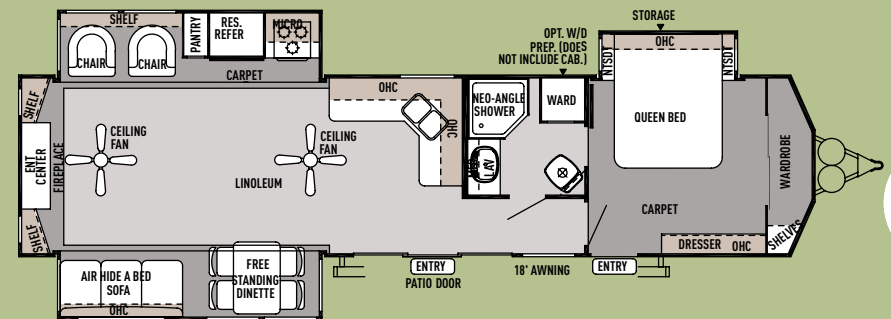
T394FKDS



T404FB



T404X4



T407REDS



THE WILDWOOD LINE-UP



WILDWOOD X-LITE



WILDWOOD



WILDWOOD DLX | WILDWOOD LODGE



WILDWOOD HERITAGE GLEN

YOUR WILDWOOD DEALER



Learn More
Scan this barcode using
a QR Reader on your
smart phone to learn
more about Forest River.



A Berkshire Hathaway company.

Forest River, Inc. 55470 C.R. 1 Elkhart, IN 46515 | (574) 533-5934
www.forestriverinc.com/wildwood | www.forestriveraccessories.com

FREE MEMBERSHIP
to Forest River Owners' Group

www.forestriverfrog.com



All illustrations and specifications contained in this literature are based on the latest product information at time of publication. Forest River reserves the right to make changes in prices, colors, materials, equipment and specifications at anytime without notice and assumes no responsibility for any error in this literature. All units are shipped F.O.B. Goshen, Indiana. CONSULT YOUR LOCAL DEALER FOR WARRANTY INFORMATION. LITHO: U.S.A. FOR 1083 P & W: 2013.12.10



PRE-DELIVERY INSPECTION FACILITY

20,000 square feet of quality assurance. The bare essentials for a premium product. This state-of-the-art facility gives immediate daily feedback to production for quality assurance in every unit built.



Forest River, Inc. encourages our customers to purchase their Forest River products from a local dealership whenever possible for the following reasons:

- 1) Forest River, Inc. dealers are independently owned and operated businesses so priority service and scheduling is at their discretion and is often provided to customers that purchased their unit at that dealership.
- 2) Purchasing locally allows customers to establish meaningful relationships with a dealer, enhancing the RV experience through assistance with product questions, user tips or RV regulations for your state or country, and much more!
- 3) Canadian customers must meet requirements to bring an RV purchased out of the country to their home. These requirements may involve additional inspections and certifications, taxes and fees. Your local Canadian Dealer is a professional at meeting these requirements.
- 4) Scheduling timely warranty repairs and adjustments through a local dealership provides far greater flexibility and convenience to you, the customer!

It is the goal of Forest River, Inc. that all of our RV owners fully enjoy the RV experience and that customer satisfaction meets or exceeds their expectations!

24/7 EMERGENCY ROADSIDE ASSISTANCE

For a worry-free ownership experience

Forest River includes one

year of Coach-Net RV Technical & Roadside Assistance with each RV purchase. Whether new to the RV lifestyle or an experienced RV enthusiast, Forest River owners have 24/7 access to technical, operational and emergency road service coverage throughout the US & Canada. Coach-Net's fast, dependable service is just a phone call away.

Coach-Net®

RV Technical & Roadside Assistance

