

PUMA

by Palomino



Travel Trailers • Fifth Wheels • Toy Haulers • Destination Trailers

PUMA
by Palomino



Travel Trailers • Fifth Wheels • Toy Haulers • Destination Trailers



PUMA

by Palomino



30RKSS

Standard Puma multi-color full body exterior graphics



30RKSS Enjoy the view! Large panoramic windows provide fresh air. This model includes a butcher block hardwood residential style table, and a tri-fold sofa that converts to sleeping area. Shown in Antique decor.

Whatever your travel lifestyle, there's an easy to tow Puma Model for you. Puma floorplan configurations are designed with convenient features to make the most of leisure living – including a variety of kid's bunk room models.



30RKSS This bath includes a neo angle glass shower, a large sink and wooden medicine cabinet, a wall mounted toothbrush holder and soap dish and a skylight.

30RKSS is a spacious rear kitchen model with Maple glazed cabinet doors, a contemporary backsplash, a residential microwave, a large 22" oven and 7 cu. ft. refrigerator/freezer. Beauflor® tile pattern flooring and Comfort Series swivel rockers create a feeling of home. Shown with optional LG solid surface countertops.





30FKSS Now you're cooking with plenty of counter space, and a large 60/40 sink and a built-in spice rack. Sleek black kitchen appliances include a large oven and a 7 cu. ft. refrigerator/freezer. Optional Beauflor plank flooring shown.



30FKSS bath features a large linen closet, glass shower door and a convenient foot-flush toilet.

30FKSS features a tri-fold sofa for additional sleeping, LED lighting and sconces, end-to-end overhead storage cabinets and a decorative wall border.



30FKSS Entertain in style – with Comfort Series chair and residential window treatments. Cross ventilation slide out windows provide natural light. Shown with these options: LG solid surface countertop, Beauflor® plank flooring and TV.

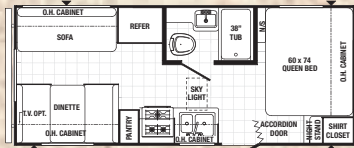


30FKSS Optional Puma Premier Edition with color front cap, built-in lights, aluminum wheels, and bold high contrast exterior graphics.

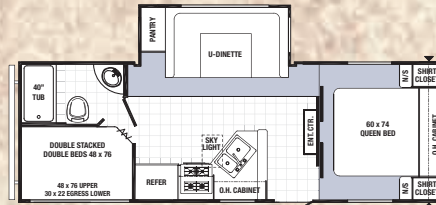




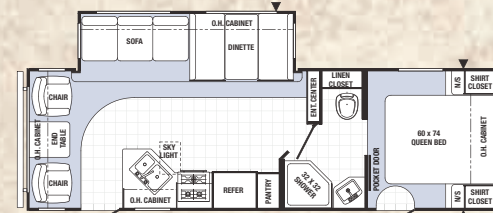
All Pumas are equipped with long-life LED lighting inside.



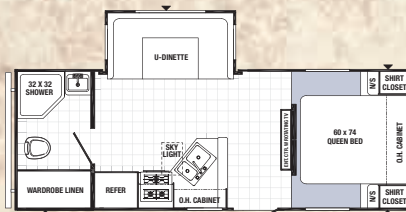
19RL



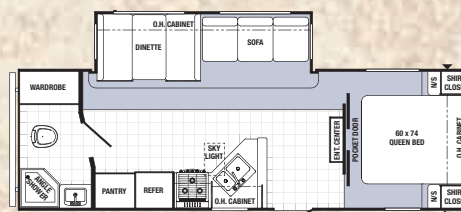
23RBFQ



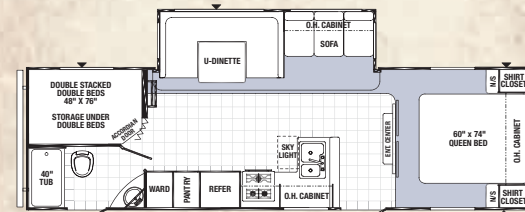
26RLSS



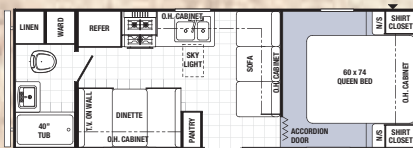
22RB



25RBSS



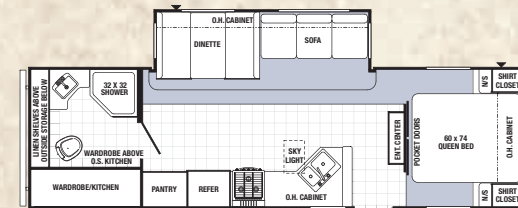
28DSBS



23FB



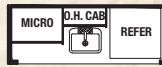
25RS



28RBSS

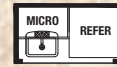
Travel Trailers	19RL	22RB	23FB	23RBFQ	25RBSS	25RS	26RLSS	28DSBS	28RBSS	29QBSS	29RBKS	30DBSS	30FBSS	30FQSS	30RKSS	30FKSS	31BHSS	31DBTS	31RDKS	32DBKS	32FKSL
Hitch Weight	446	460	673	818	651	600	680	836	950	815	850	788	1155	936	1027	1156	890	879	902	758	1410
Axle Weight	3802	4808	3985	4880	5618	4430	5939	6050	5607	6541	6506	6367	6975	5897	5970	6336	6812	7258	6379	7895	6652
Dry Ship Weight	4248	5530	4658	5698	6269	5030	6619	6886	6557	7356	7356	7155	8130	6833	6997	7492	7702	8137	7281	8703	8062
GVWR	6082	7364	6493	7818	8603	7064	8954	9220	8892	9615	9650	9490	10663	9368	9531	10092	10236	10671	9616	10902	10596
CCC (Cargo Cap.)	1800	1800	1800	2070	2300	2000	2300	2300	2300	2209	2260	2300	2500	2500	2500	2500	2500	2500	2300	2215	2500
Exterior Length	23'-7"	26'-6"	27'-4"	28'3"	29'-6"	28'	31'-2"	32'-2"	31'-11"	33'-11"	33'7"	33'-5"	34'-8"	TBD	33'-10"	34'-9"	35'-4"	35'-7"	34'-5"	36'-9"	35'-11"
Water Heater Cap. (gal)	6	6	6	6	6	6	6	6	6	6	6	6	6	6	6	6	6	6	6	6	6
Fresh Water Cap. (gal)	51	51	51	51	51	51	51	51	51	51	51	51	51	51	51	51	51	51	51	51	51
Black Water Cap. (gal)	32	32	42	42	42	42	42	32	42	42	42	42	42	42	32	42	32	32	42	42	42
Grey Water Cap. (gal)	42	42	42	32	32	42	42	74	42	42	74	42	42	42	84	74	42	42	42	74	74
Tire Size (in.)	14"	14"	14"	14"	15"	14"	15"	15"	15"	15"	15"	15"	15"	15"	15"	15"	15"	15"	15"	15"	15"
Awning Size (ft.)	15'	14'	18'	20'	21'	20'	21'	17'	16'	19'	21'	18'	21'	18'	21'	19'	21'	18'	12'	13'	20'

**OUTSIDE KITCHEN OPTIONS
WITH BUMPER MOUNT GRILL**

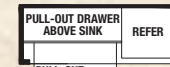


28RBSS (TT)
30DBSS (TT)
30FBSS (TT-Side Mount Grill)

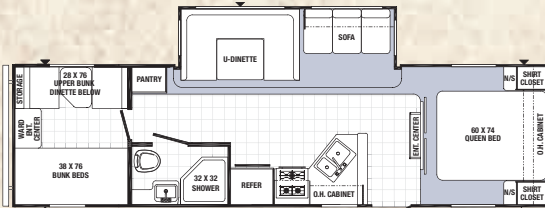
31BHSS (TT)
31DBTS (TT)
31DBKS (TT)



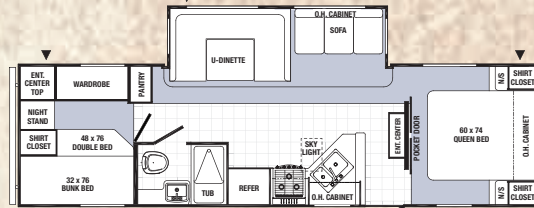
22RB (TT)



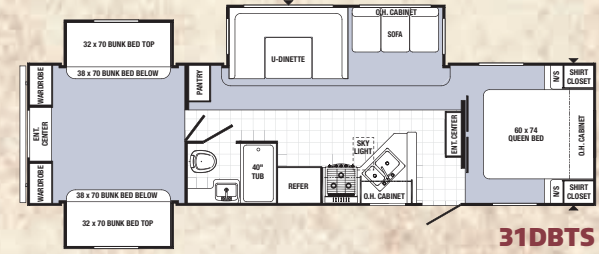
23RBFQ (TT)



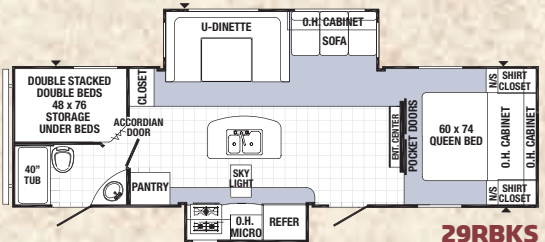
29QBSS



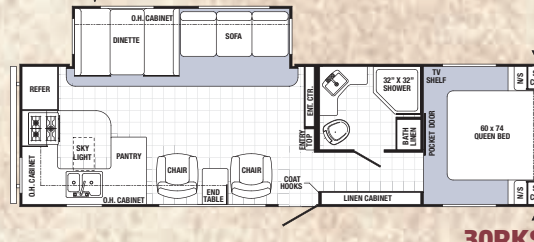
30FQSS



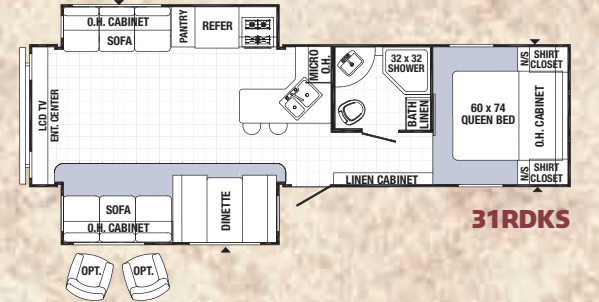
31DBTS



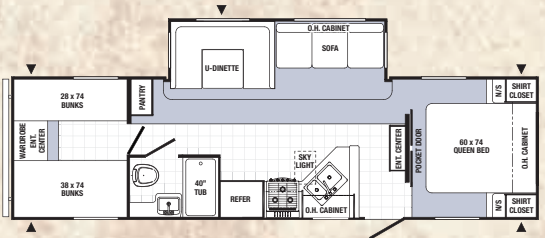
29RBKS



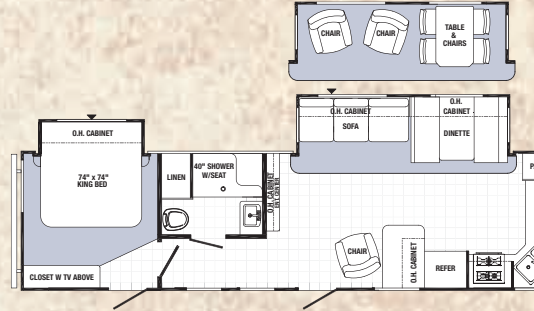
30RKSS



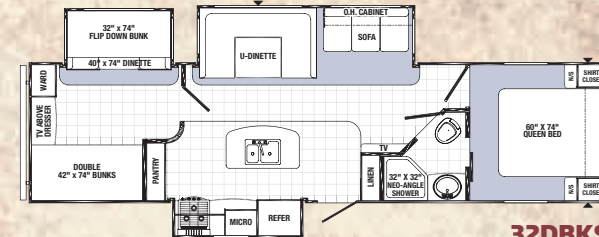
31RDKS



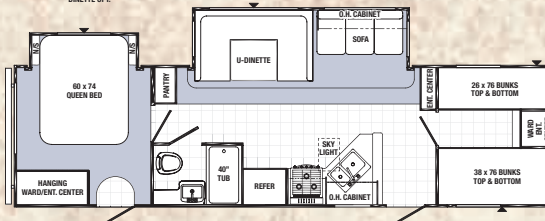
30DBSS



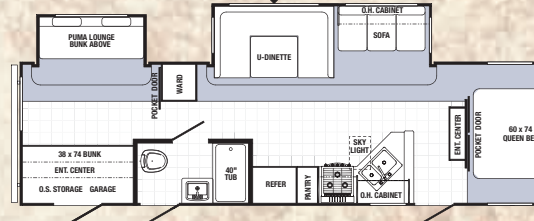
30FKSS



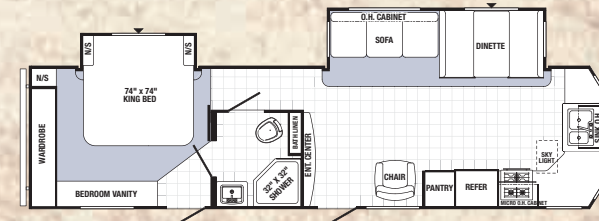
32DBKS



30FBSS



31BHSS



32FKSL*

*These travel trailer models are available with the Optional Residential Package.



PUMA

by Palomino



30FBSS

Choose the ultimate RV for tailgating. This convenient optional Side Paw outside kitchen helps you stay where the action is. The outside entertainment center lets you watch the game, while enjoying the fresh air.



30FBSS Cook up something amazing in this large oven with a handy built-in spice rack, decorative back splash. This entertainment friendly kitchen features an elevated bar ledge, a large 7 cu. ft. refrigerator/freezer and loads of storage.



30FBSS Rest in comfort with the standard King bed, LED reading lamps and large windows for fresh air. Stow away extras in ample underbed and overhead storage. Designer pillow shams and bedspreads create a plush, relaxing retreat.

30FBSS is the ultimate getaway bunkroom! Kid's love the built-in bunk ladder and loads of wardrobe storage for toys and games.



30FBSS This 85" U-dinette with dual access storage converts to additional sleeping space. The versatile booth table can be moved inside or out. Recessed LED lighting above the sofa provides soft reading light. Shown in Pewter decor with decorator valances and large panoramic windows.





281RBKS

OUTSIDE KITCHEN OPTIONS WITH BUMPER MOUNT GRILL

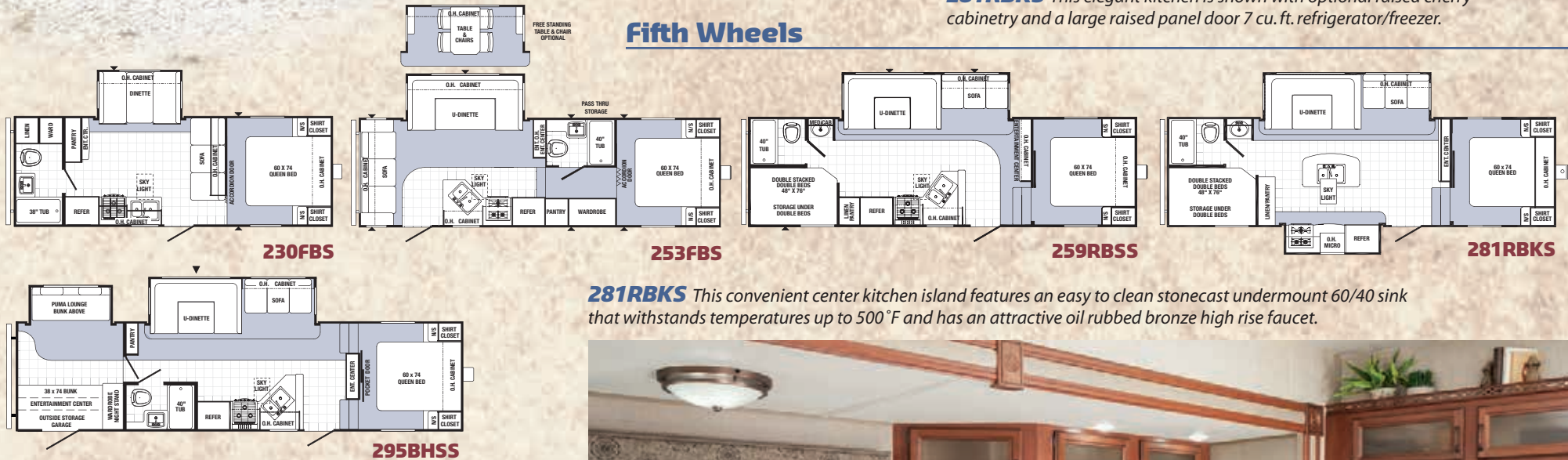


Puma offers five Fifth Wheel floor plans. All models feature oil rubbed bronze hardware and are loaded with storage.



281RBKS This elegant kitchen is shown with optional raised cherry cabinetry and a large raised panel door 7 cu. ft. refrigerator/freezer.

Fifth Wheels



281RBKS This convenient center kitchen island features an easy to clean stonecast undermount 60/40 sink that withstands temperatures up to 500 °F and has an attractive oil rubbed bronze high rise faucet.



Fifth Wheels	230FBS	253FBS	259RBSS	281RBKS	295BHSS
Hitch Weight	1107	1027	1427	1436	1073
Axle Weight	4663	5803	5374	6200	6796
Dry Ship Weight	5770	6830	6801	7636	7869
GVWR	8103	9163	9335	10170	10603
CCC (Cargo Cap.)	2300	2300	2500	2500	2700
Exterior Length	24'- 6"	27'- 4"	29'- 2"	29' 4"	33'- 7"
Water Heater Cap. (gal)	6	6	6	6	6
Fresh Water Cap. (gal)	51	51	51	51	51
Black Water Cap. (gal)	42	32	42	42	32
Grey Water Cap. (gal)	42	84	74	64	74
Tire Size (in)	15"	15"	15"	15"	15"
Awning Size (ft)	14'	16'	13'	21'	18'

Fifth wheel weights include standard 13.5 BTU roof air, double door refrigerator, awning and an optional oven.



PUMA

by Palomino

39FKS



Experience the perfect vacation home. Puma Destination Trailers offer comfortable living with seven spacious floor plans, and a choice of two bedroom and den options for a private retreat. Residential style furnishings and a large master bedroom with king size bed give a well appointed feeling of home.

Destination Trailers



39FKS Experience a great view from any seat in the house! Shown in Bark decor with a tri-fold sofa for additional sleeping, LED overhead lighting and sconces, a decorative wall border, plus a freestanding dinette with residential style chairs and end-to-end overhead storage cabinets.



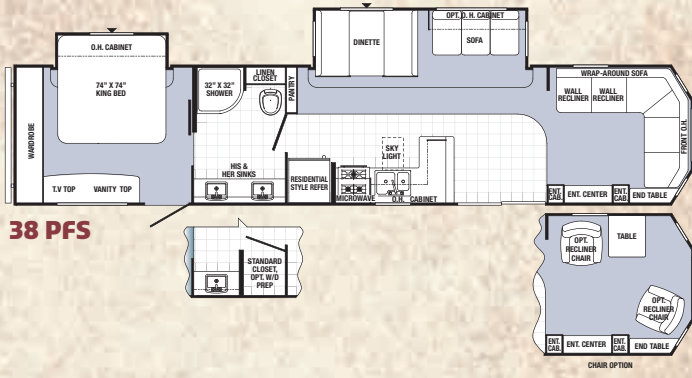
39FKS features a 16 cu. ft. residential refrigerator/freezer with built-in ice maker. Comfort Series chairs and standard 5.1 Dolby surround sound stereo with Bluetooth capability. Shown with optional fireplace and ceiling fans.



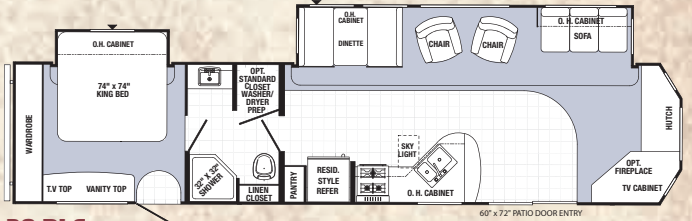
39FKS Rest in comfort with LED reading lamps and large windows for fresh air. Stow away extras in ample underbed and overhead storage. Designer pillow shams and bedspreas create a plush, relaxing retreat. Standard King size bed is shown.



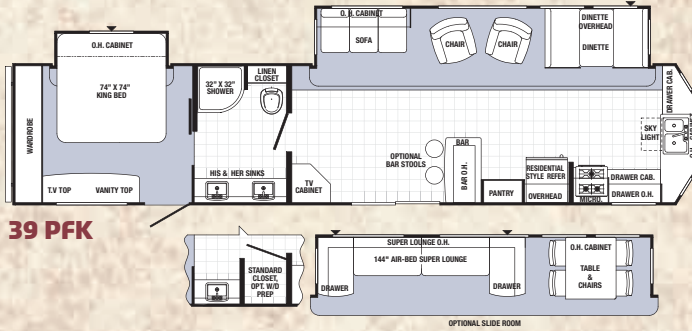
39FKS This ergonomic L-shaped kitchen features raised panel cabinet doors, a free-standing range with a broiler, LG solid surface countertops with an attractive oil rubbed Bronze high rise faucet.



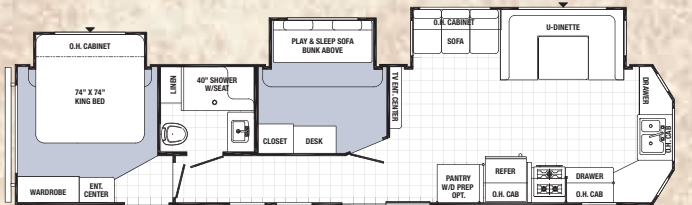
38 PFS



38 PLF



39 PFK



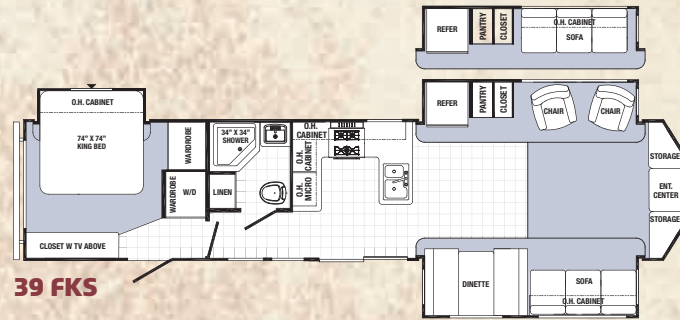
39 BHT



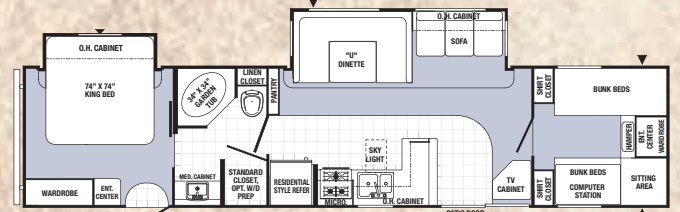
39PBS (DT)
39PQB (DT)



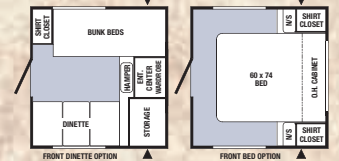
All Pumas are equipped with long-life LED lighting inside.



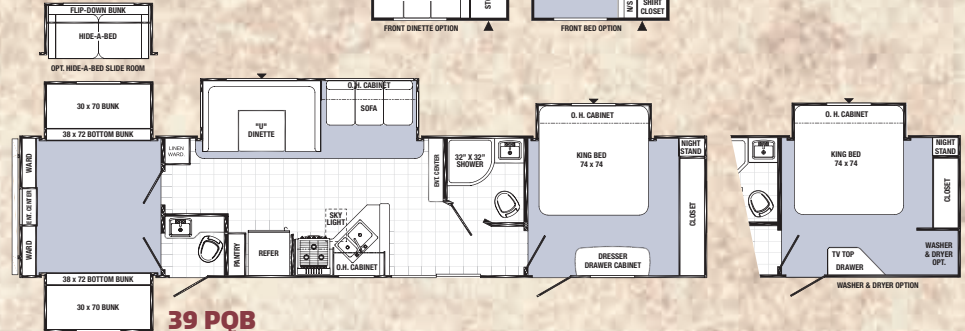
39 FKS



39 PBS



39 PQB



39FKS Features a glass door neo angle shower, a hardwood vanity with medicine cabinet and a large linen cabinet with storage drawers underneath.

Destination Trailers	38PFS	38PLF	39PBS	39PFK	39BHT	39PQB	39FKS
Hitch Weight	1245	1695	1295	1590	1588	1325	1399
Axle Weight	7645	7870	7910	7845	8377	9040	8569
Dry Ship Weight	8890	9565	9225	9435	9965	10365	9968
GVWR	11405	12099	11739	11970	11748	12899	11559
CCC (Cargo Cap.)	2481	2500	2500	2500	1749	2500	1541
Exterior Length	40'-11"	40'10"	40'-2"	40'-11"	40'-11"	42'-6"	40'-11"
Water Heater Cap. (gal)	12	12	12	12	12	12	12
Fresh Water Cap. (gal)	51	51	51	51	51	51	51
Black Water Cap. (gal)	42	42	42	42	42	84	42
Grey Water Cap. (gal)	74	84	84	74	84	116	74
Tire Size (in)	15"	15"	15"	15"	15"	16"	15"
Awning Size (ft)	21'	21'	21'	21'	21'	21'	21'

OUTSIDE KITCHEN OPTIONS WITH BUMPER MOUNT GRILL



PUMA

by Palomino



359THKS



359THKS features these standards: a stonecast undermount sink, solid wood dinette table, a large U-shaped sofa, spacious pantry storage, decorative window treatments and a convenient 110V outlet on the island. Shown with optional raised panel Cherry cabinet doors and LG solid surface countertop.



Toy Haulers

359THKS

This storage friendly bedroom has nightstands with drawers, an LED overhead reading light and a decorative bedspread with matching pillow shams.

Experience the ultimate in convenience on your off-road adventure. Take your gear, toys and friends and head out for the time of your life, complete with everything you need to play hard all day, and rest easy all night!



All Pumas are equipped with long-life LED lighting inside.

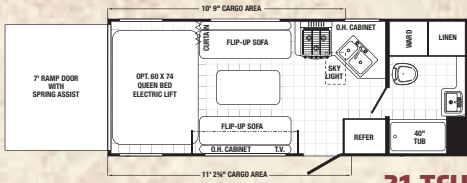
359THKS Choose the configuration that fits your style. Select from optional double electric trac beds (shown), single trac bed or the HappiJac dinette. Frame mounted D-rings for maximize stability. Dovetail ramps provide easy cargo area access. Standard industrial rubber-mount flooring is easy to keep clean.

Toy Haulers Fifth

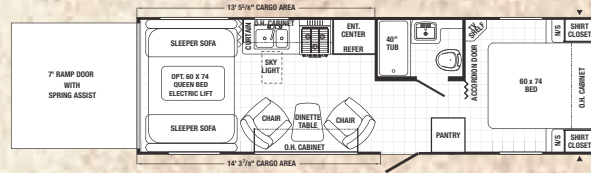


Toy Haulers FW	298FQU
Hitch Weight	1819
Axle Weight	5810
Dry Ship Weight	7629
GVWR	11163
CCC (Cargo Cap.)	3500
Exterior Length	30'- 11"
Water Heater Cap. (gal)	6
Fresh Water Cap. (gal)	100
Black Water Cap. (gal)	42
Grey Water Cap. (gal)	32
Tire Size (in)	15"
Awning Size (ft)	18'

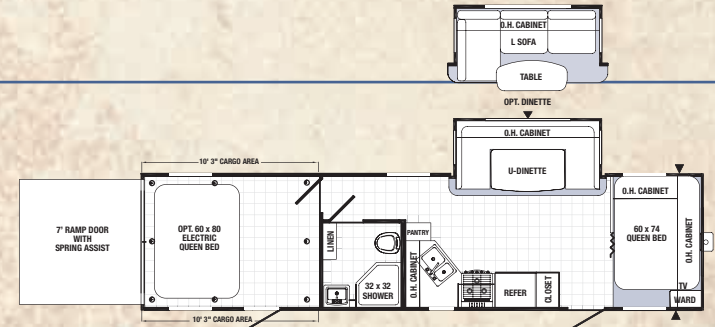
Toy Haulers Travel Trailers



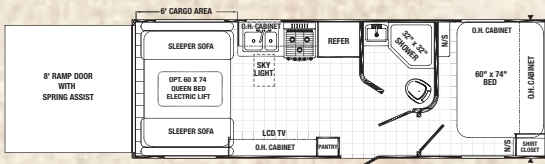
21 TFU



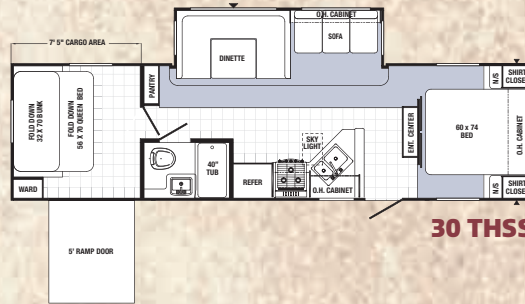
27 SBU



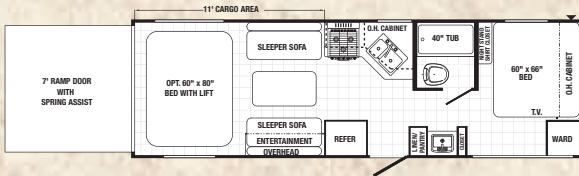
32 TFB



24 THS

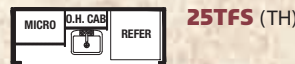


30 THSS



25 TFS

OUTSIDE KITCHEN OPTIONS WITH SIDE MOUNT GRILL



25TFS (TH)

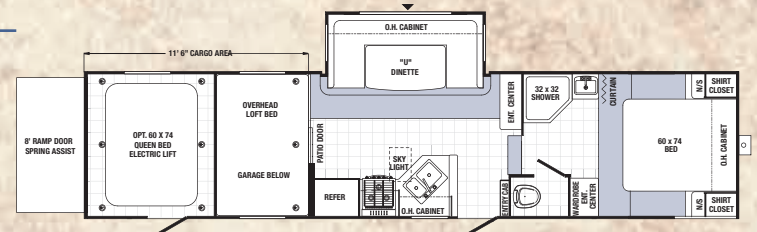
Toy Haulers TT	21TFU	24THS	25TFS	27SBU	30THSS	32TFB
Hitch Weight	861	536	797	902	1145	1110
Axle Weight	4672	5882	6153	6028	6200	7153
Dry Ship Weight	5533	6418	6950	6930	7345	8263
GVWR	7861	9452	10483	10464	10879	11270
CCC (Cargo Cap.)	2294	3000	3500	3500	3500	2957
Exterior Length	25' 0"	27'- 11"	29'- 7"	30'- 2"	35'- 4"	36' 2"
Water Heater Cap. (gal)	6	6	6	6	6	6
Fresh Water Cap. (gal)	51	51	100	100	100	100
Black Water Cap. (gal)	42	42	42	32	32	42
Grey Water Cap. (gal)	32	42	42	42	42	42
Tire Size (in)	15"	15"	15"	15"	15"	15"
Awning Size (ft)	14'	13'	14'	15'	16'	16'

Wheels

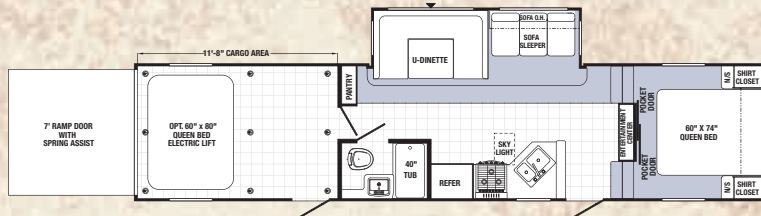
351THSS	356QLB	359THKS
1481	2557	2090
7950	6651	7895
9431	9208	9985
13465	13243	14020
4000	4000	4000
37' 0"	36'- 2"	36'- 8"
6	6	6
100	100	100
42	42	32
32	74	42
16"	16"	16"
21'	21'	21'



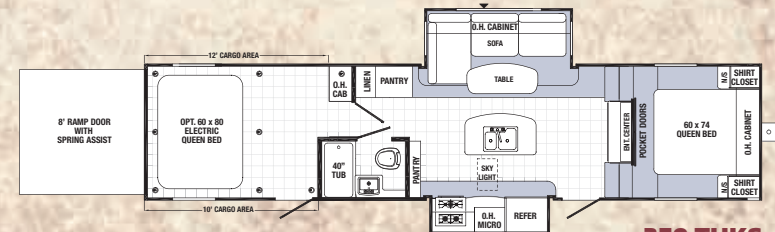
298 FQU



356 QLB



351 THSS



359 THKS

PUMA

by Palomino

Construction - Longer Lasting • Better Built

Puma Features



All Pumas are equipped with long-life LED lighting inside.



A. Rubber Roof (12 year warranty)

B. Rugged, Powder Coated Steel I-Beam Frame

C. Sturdy .024 Gauge Aluminum Skin

D. Exterior Amber Lens Patio Light

E. Exterior Hitch Light for Night-Time Hook Up

F. 51 Gallon Fresh Water Tank

G. Bold Exterior Graphics

H. Residential Grade Carpet-17 oz. with Pad

I. Color Band Metal Enhances Exterior Looks

J. Sidewall Studding Spaced 16" Apart

K. Longitudinal Floor Studding Spaced 12" Apart

L. 5/8" One Piece Floor Decking

M. New Beauflor® Linoleum Flooring Cold Crack Resistant

N. R 7 Fiberglass Insulation Cut and Glued Between Sidewall Studs

O. 4-1/2" Crowned Truss Roof Rafters

P. Steel Crossmembers for Added Support

Q. Floor Ducted Heat

R. Insulated Wrapped Ducted Air Conditioning Runs

S. 3/8" Roof Decking

T. Puma Next Generation™ Enclosed and Heated Water Tank

U. Radius Exterior Doors



7 Cu. ft. refrigerator/freezer with blue LED lighting.



Decorative backsplash with monitor panel that indicates battery strength, tank capacity and water pump details.



All toyhaulers are prepped with an outside TV bracket.



Hard valances in living rooms are available with optional day/night shades.



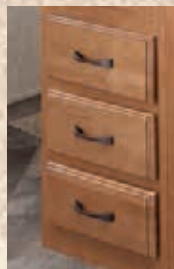
Every Puma has a kitchen skylight with shade.



Optional tri-fold sofa converts to added sleeping accommodations.



Convenient exterior pass-through storage



Maple glazed, solid wood drawer fronts are standard.

Toy Hauler Features



Garages include heavy duty D-ring tie-downs, anchored into an 8"x14" steel plate welded to the frame for secure travel. Dovetail diamond plate for safe, easy access.



Baggage Compartment with sliding tray.



Optional 30 gallon fuel station (most models)

Side Paw Kitchen

This convenient outside kitchen keeps you where the action is. An outside entertainment center lets you watch the game, while enjoying the fresh air. It includes a microwave, a 4 cu. ft. refrigerator and a standard bumper grill (not shown).



Dramatic energy efficient, long-life LED lighting with hitch cover is standard on all Puma front caps.

STANDARD FEATURES

Exterior

- ◆ Radius Entry Doors
- ◆ Powder Coated Frames
- ◆ EZ Lube Axles
- ◆ Tinted Safety Glass
- ◆ Clamp Ring Windows
- ◆ Double Entry Doors (Where Applicable)
- ◆ Pass-Thru Storage (Where Applicable)
- ◆ Awning
- ◆ Diamond Plate
- ◆ Rubber Roof - 12 Year Manufacturer's Warranty
- ◆ 9" Three-Tier Steps
- ◆ Rain Gutters with Large Drop Spouts
- ◆ Automotive Style Fender Skirts
- ◆ Radius Baggage Doors
- ◆ Darco Wrapped Underbelly
- ◆ One Piece, 24' Sheet, 5/8" Floor Decking (25 Year Manufacturer's Limited Warranty)
- ◆ 2 x 3 Flush Joists on 12" Centers
- ◆ Lighted Pass-Thru Exterior Baggage Compartments (Where Applicable)
- ◆ 2-20 lb. Gas Bottles
- ◆ 6 Gal. DSI Hot Water Heater
- ◆ Rack and Pinion Electric Slide System with Manual Override (Standard on all Slide-Out Models)



- ◆ Heavy Duty Storage Door for the Puma Den Option
- ◆ Clamp Ring Luggage Doors
- ◆ Large 14 x 34 Front Pass Thru Baggage Doors (TT Only)

Interior

- ◆ 80" Interior Height
- ◆ Ventilated Side Windows in All Slide-outs
- ◆ Insulated A/C Ducting (All Models)
- ◆ Floor Ducted Heat
- ◆ 30,000 BTU Furnace
- ◆ 13,500 BTU Ducted A/C
- ◆ Flush Floor Slide-Outs
- ◆ 16" Deep Overhead Cabinets in Super-Slide Models
- ◆ Real Wood Drawers
- ◆ Solid Wood Drawer Fronts
- ◆ Kitchen Skylight
- ◆ Decorative Kitchen Splashboard
- ◆ Kitchen Ball Bearing Drawer Guides
- ◆ Spice Rack (Kitchen)
- ◆ (1) Sink Cover
- ◆ Divided Silverware Drawer
- ◆ 7 Cu. ft. Double Door Refrigerator
- ◆ 60/40 Undermount Acrylic Stonecast Kitchen Sink
- ◆ New High Rise Tea Pot Handle Kitchen Faucet

- ◆ Atwood 3-Burner, High Output Range
- ◆ Built-in Knife Rack
- ◆ LED Lighting Throughout
- ◆ NEW LED Lights with Night Light Feature (Kitchen, Bath, Bunk Room)
- ◆ Upgrade Window Treatment
- ◆ 55 Amp Converter with Battery Charger
- ◆ AM/FM CD/DVD Stereo
- ◆ Swivel Rocker*
- ◆ TV Antenna with Booster and Cable Hook-up
- ◆ Wood Medicine Cabinet with Mirrored Door
- ◆ Power Vent in Bath
- ◆ Tub Surround
- ◆ Glass Shower Door*
- ◆ 12V Shower LED Light
- ◆ Innerspring Mattress
- ◆ Bedroom Carpet
- ◆ Bedspread
- ◆ Quilted Bunk Mats
- ◆ Wardrobe and Shirt Closet in Front Bedrooms (TT Only)
- ◆ Nightstands in Front Bedrooms
- ◆ Hard Valances in all Bedrooms (Most Models)
- ◆ Four Interior Decors
- ◆ Choice of Fabric or Vinyl Sofas and Chairs
- ◆ Coat Hooks in Entry Way (Most models)
- ◆ Oil Rubbed Bronze Hardware, Light and Bath Fixtures

- ◆ Overhead Cabinets in Slide Room*
 - ◆ Cabinet Doors under Dinette Seats
 - ◆ Upgraded Carpet (16 oz. with Pad)
 - ◆ Upgraded Residential Beauflor® Linoleum with 7 Year cold crack warranty
 - ◆ Mini Blinds
 - ◆ Lambrequin Window Treatments (Living Room)
 - ◆ New Larger Countertops (Most Models)
- #### Standard Safety Features
- ◆ CO2 Detector
 - ◆ LP Leak Detector
 - ◆ Fire Extinguisher
 - ◆ Smoke Detector

Options

- ◆ Cherry Cabinets
- ◆ Solid Surface Countertops
- ◆ Water Purifier
- ◆ Sink Cover
- ◆ Range Cover
- ◆ 6 Gal. Gas/Electric DSI Hot Water Heater
- ◆ Water Heater By-Pass (Forced Option)
- ◆ 21" Oven
- ◆ Microwave
- ◆ Create-a-Breeze™ Fan (Exchange)
- ◆ Extra Roof Vent
- ◆ 15,000 BTU Ducted A/C
- ◆ Outside Grill

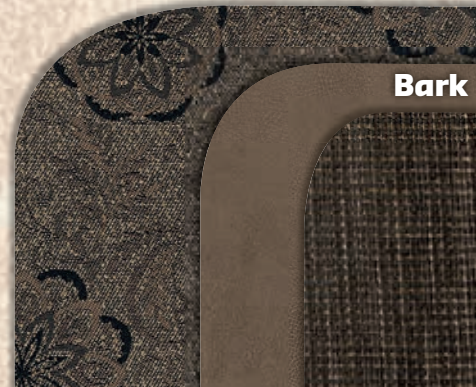
- ◆ Day/Night Shades
- ◆ Wall Border
- ◆ Front Window with Rock Guard (TT Only)
- ◆ Electric Awning with LED Lights
- ◆ 2 Stabilizer Jacks
- ◆ 4 Stabilizer Jacks (TT Only)
- ◆ Outside Shower
- ◆ Fiberglass Front Cap with Diamond Plate (Fifth Wheels & Travel Trailers)
- ◆ Power Front Jacks (Fifth Wheels Only)
- ◆ 30 lb. Gas Bottles and Cover
- ◆ 29" LED TV
- ◆ 32" LCD TV
- ◆ 40" LED TV
- ◆ Spare Tire and Carrier
- ◆ PUMA Den*
- ◆ AM/FM CD/DVD Home Theater Surround Sound System
- ◆ Bath Skylights
- ◆ Free Standing Dinette*
- ◆ Tri-fold Sofa (Where available)*
- ◆ Roof Ladder
- ◆ Heated Tanks
- ◆ Stacked Bunk Option
- ◆ Upgraded Serta® Mattress
- ◆ Enclosed Underbelly

Residential Package

- ◆ Residential Style 18.2 Cu. Ft. Refer
- ◆ Patio Door
- ◆ Free-Standing Range

*Available on select models.

Decor Options



Destination Trailers

Additional Standards

- ◆ 6 Gal. Gas/Electric DSI Hot Water Heater
- ◆ TV Antenna with Booster and Cable Hook-Up
- ◆ Lambrequin Window Treatments
- ◆ Overhead Cabinets in Slide Room
- ◆ Swivel Rocker
- ◆ Bedroom TV Hook-Up
- ◆ Bedroom Roof Vent
- ◆ Upgraded Serta® Mattress
- ◆ King Bedspread
- ◆ Tub Surround
- ◆ Glass Shower Door
- ◆ Mini Blinds
- ◆ Home Theater DVD Surround Sound AM/FM/CD Player
- ◆ Free Standing Range

- ◆ Phone Jacks
- ◆ Patio Door
- ◆ Tinted Safety Glass
- ◆ 18.2 Cu. Ft. Residential Refrigerator with Ice Maker
- ◆ Gloria Maple Glazed with Raised Panel Doors
- ◆ New Larger Countertops
- ◆ Upgraded Residential Beauflor® Linoleum with 7 year cold crack warranty
- ◆ 35,000 BTU Furnace
- ◆ 13,500 BTU Ducted Air Conditioning

Options

- ◆ Cherry Cabinets
- ◆ Solid Surface Countertops
- ◆ Water Purifier

- ◆ Sink Cover
- ◆ 12 Gal. Gas/Electric Water Heater
- ◆ Water Heater By-Pass
- ◆ Range Cover
- ◆ Oven
- ◆ Microwave
- ◆ 29" LED TV
- ◆ 32" LCD TV
- ◆ 50 Amp Service
- ◆ Washer/Dryer Prep with 50 Amp Service
- ◆ Stackable Washer/Dryer Includes Prep
- ◆ Convection Microwave/Cook Top
- ◆ Create-A-Breeze™ Fan (Exchange) Fantastic Vent Fan
- ◆ 12 V Ceiling Fan in Living Room
- ◆ 12 V Ceiling Fan in Bedroom

- ◆ 15,000 BTU Ducted Air Conditioning
- ◆ Outside Grill
- ◆ Outside Shower
- ◆ 30" Entry Door IPO of Sliding Patio Door
- ◆ Bath Skylight
- ◆ Day/Night Shades
- ◆ Freestanding Dinette
- ◆ Wall Border
- ◆ Woodgrain Linoleum
- ◆ Bar Stools (2 per Floorplan)
- ◆ 2 Exterior Speakers
- ◆ Tri-fold Sofa
- ◆ 2 Swivel Recliners*
- ◆ Electric Awning
- ◆ 2 Stabilizer Jacks
- ◆ 4 Stabilizer Jacks

- ◆ Roof Ladder
- ◆ 30 Lb. Gas Bottles and Cover
- ◆ Heated Tanks
- ◆ Spare Tire and Carrier
- ◆ Folding Grab Handle
- ◆ Carbon Monoxide Detector
- ◆ Fireplace (Available Certain Models)
- ◆ Z240

Residential Package

- ◆ 18.2 Cu. Ft. Residential Refrigerator with Ice Maker
 - ◆ Patio Door
 - ◆ Free-Standing Range
- *Available on select models.

Toy Haulers

Additional Standards

- ◆ Heavy Duty I-Beam Frames with EZ Lube Axles
- ◆ 1/4" x 8" Tie Down Reinforcement Plates for Secure Cargo Tie Downs
- ◆ Beaver Tail Rear Floor for Easy Loading
- ◆ Diamond Plate
- ◆ 2" x 2" Wood Framed Sidewalls on 16" Centers
- ◆ 2" x 3" Floor Joist on 10" Centers
- ◆ R-7 Insulation Floor, Walls, and Ceiling for Comfort
- ◆ One Piece 5/8" Floor Decking with a 25 Year Limited Warranty
- ◆ One Piece Beauflor® Linoleum
- ◆ 3/8" Walkable Roof Decking Over 4-1/2" Crowned Roof Rafters
- ◆ One Piece Rubber Roof with 12 Year Warranty
- ◆ Insulated Duct For Air Conditioning in Ceiling

- ◆ Floor Ducted Heat
- ◆ 55 Amp Converter Standard
- ◆ 7' Rear Ramp Door, (8' on 356 QLB, 359 THKS)
- ◆ Front Baggage Compartment with Sliding Tray (27 SBU, 356 QLB & 359 THKS)
- ◆ Front Exterior Baggage Compartment
- ◆ 5.1 Dolby Surround Sound System with Sub-Woofer, AM/FM/DVD Player, Weather Band, and Plug-In for iPod (N/A 21 TFB and 21 TFU)
- ◆ Home Theater DVD Sound System with AM/FM/CD
- ◆ 29" LED TV with Movable Bracket for Easy Mounting Inside or Outside (Most Models)
- ◆ TV Antenna with Booster and Cable Hook-Up
- ◆ Double Door Refrigerator
- ◆ 13,500 BTU Ducted Air Conditioning
- ◆ Sofas Fold-Down into Queen Bed

- ◆ Tinted Safety Glass
- ◆ All Interiors Available with Standard Gloria Maple Glazed Cabinets or Optional Glazed Franklin Cherry
- ◆ Bedspread
- ◆ Tub Surround
- ◆ Glass Shower Door (24 THS, 356 QLB)
- ◆ Mini Blinds

Options

- ◆ Cherry Cabinets
- ◆ Solid Surface Countertops
- ◆ Water Purifier
- ◆ Sink Cover
- ◆ Range Cover
- ◆ 6 Gal. Gas/Elec. DSI Hot Water Heater
- ◆ Water Heater By-Pass
- ◆ Oven
- ◆ Microwave
- ◆ Convection Microwave/Cook Top
- ◆ Create-A-Breeze™ Fan (Exchange) Fantastic Vent Fan on Travel Trailers)

- ◆ 29" LED TV (Available on Most Models)
- ◆ 32" LCD TV (IPO) Where Available
- ◆ 2 Exterior Speakers
- ◆ Extra Roof Vent
- ◆ 15,000 BTU Ducted Air Conditioning
- ◆ Single Electric Track Queen Bed
- ◆ Double Electric Track Queen Bed
- ◆ Happi Jack Electric Sofa
- ◆ Bath Skylight
- ◆ Day/Night Shades
- ◆ Wall Border
- ◆ Beauflor® Woodgrain Linoleum
- ◆ LED Lighted Electric Awning
- ◆ 2 Stabilizer Jacks
- ◆ 4 Stabilizer Jacks (Travel Trailers Only)
- ◆ Power Front Jacks (Fifth Wheels Only)
- ◆ Roof Ladder
- ◆ Outside Shower
- ◆ Outside Grill
- ◆ NEW 5.5 KW Gas Onan Generator
- ◆ 4.0 KW Gas Onan Generator

- ◆ 3.6 KW LP Onan Generator
- ◆ 30 Gal. Fuel Pump Station
- ◆ 30 Lb. Gas Bottles and Cover
- ◆ Zip Screen
- ◆ Hide-a-Screen
- ◆ Hitch Cover (Fifth Wheels Only)
- ◆ Front Fiberglass Cap with Diamond Plate
- ◆ Mission Alum. Modified Rim
- ◆ Heated Tanks
- ◆ Wash Down Kit
- ◆ Spare Tire and Carrier
- ◆ Folding Grab Handle
- ◆ Carbon Monoxide Detector
- ◆ Upgraded Serta® Mattress (Select models)
- ◆ Enclosed Underbelly
- ◆ Power Package

PUMA

by Palomino

Travel Trailers • Fifth Wheels
Toy Haulers • Destination Trailers



Puma has a wide variety of models and floorplans to fit your lifestyle. Get out there on the prowl and enjoy leisure living at its best!



Puma a Division of Forest River, Inc.
2551 Century Drive ♦ Goshen, IN
46528 ♦ 574-642-0610
www.palominorv.com



Your Puma Dealer

All illustrations and specifications contained in this literature are based on the latest product information at time of publication. Forest River, Inc. reserves the right to make changes in prices, colors, materials, equipment and specifications at anytime without notice and assumes no responsibility for any error in this literature. All weights shown are approximate. All units are shipped F.O.B. point of manufacture.

CONSULT YOUR LOCAL DEALER FOR WARRANTY INFORMATION.

©2014 Puma by Palomino a Division of Forest River, Inc., a Berkshire Hathaway company.
All Rights Reserved. 3/15



PRE-DELIVERY INSPECTION FACILITY

20,000 square feet of quality assurance. The bare essentials for a premium product. This state-of-the-art facility gives immediate daily feedback to production for quality assurance in every unit built.



Forest River, Inc. encourages our customers to purchase their Forest River products from a local dealership whenever possible for the following reasons:

- 1) Forest River, Inc. dealers are independently owned and operated businesses so priority service and scheduling is at their discretion and is often provided to customers that purchased their unit at that dealership.
- 2) Purchasing locally allows customers to establish meaningful relationships with a dealer, enhancing the RV experience through assistance with product questions, user tips or RV regulations for your state or country, and much more!
- 3) Canadian customers must meet requirements to bring an RV purchased out of the country to their home. These requirements may involve additional inspections and certifications, taxes and fees. Your local Canadian Dealer is a professional at meeting these requirements.
- 4) Scheduling timely warranty repairs and adjustments through a local dealership provides far greater flexibility and convenience to you, the customer!

It is the goal of Forest River, Inc. that all of our RV owners fully enjoy the RV experience and that customer satisfaction meets or exceeds their expectations!

24/7 EMERGENCY ROADSIDE ASSISTANCE

For a worry-free ownership experience Forest River includes one year of Coach-Net RV Technical & Roadside Assistance with each RV purchase. Whether new to the RV lifestyle or an experienced RV enthusiast, Forest River owners have 24/7 access to technical, operational and emergency road service coverage throughout the US & Canada. Coach-Net's fast, dependable service is just a phone call away.

Coach-Net[®]
RV Technical & Roadside Assistance



Learn More
Scan this barcode using a QR Reader on your smart phone to learn more about Forest River.



A Berkshire Hathaway company.

FREE MEMBERSHIP
to Forest River Owners' Group

www.forestriverfrog.com

