



OUTLAW



THOR
MOTOR COACH



OUTLAW

TOY HAULER



35SG / BROWN SUGAR DECOR / VINTAGE MAPLE WOOD



37LS / BROWN SURGAR DECOR / OLYMPIC CHERRY WOOD

LIMITLESS POSSIBILITIES

TAKE ONE LOOK AT THE ONLY FULL LINE TOY HAULER MOTORHOME AND YOU'LL SEE ENDLESS OPPORTUNITIES.

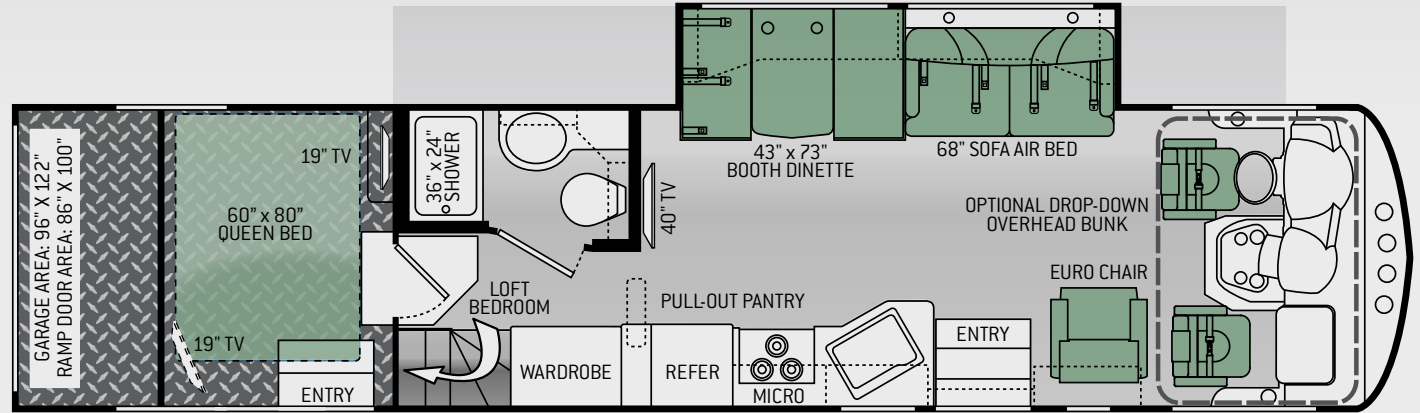
A MOTORHOME WITH A GARAGE HAS SO MANY USES. MAYBE A MOBILE OFFICE FOR TIME OUT ON THE ROAD? A PORTABLE DOG KENNEL? A PERFECT MOTOCROSS COMPANION? REGARDLESS OF WHAT LIFE DISHES OUT, THE OUTLAW'S POTENTIAL IS LIMITLESS...



37MD / CHILI PEPPER DECOR / VINTAGE MAPLE WOOD

37LS

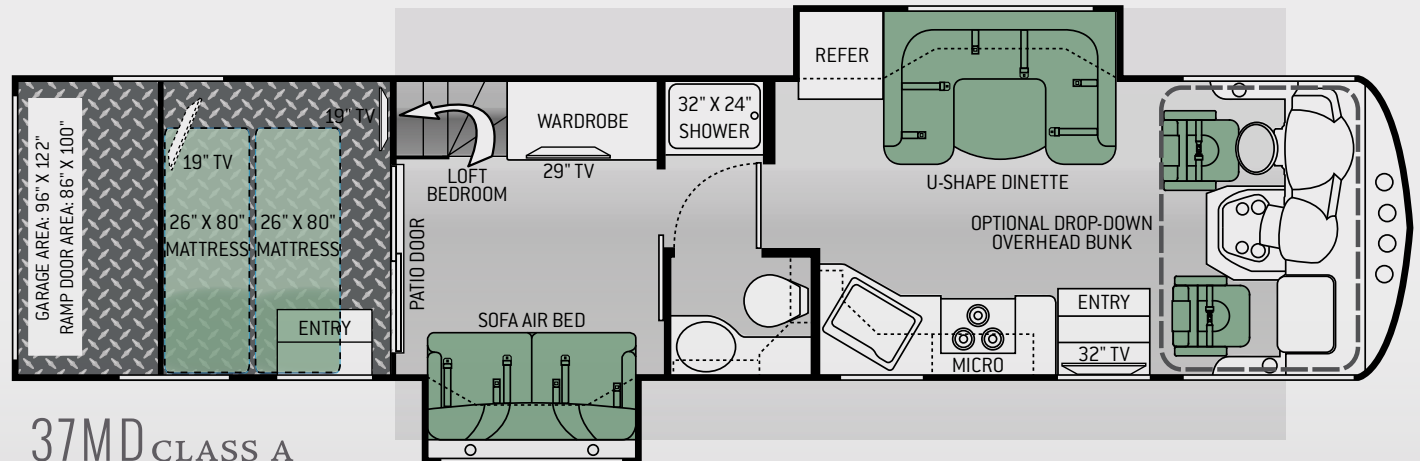
Gross Vehicle (GVWR)	26,000
Gross Combined (GCWR)	30,000
Wheel Base	252"
Exterior Length (w/o ladder)*	38'-4"
Exterior Height (w/ AC)	12'-11"
Exterior Width (w/o mirrors)	101"
Interior Height	80" - 97"
Awning Size	21'
Fuel (gal)	80
LPG (lbs)	105
Fresh/Waste/Grey Water (gal)	100/43/43
Exterior Storage Capacity (cu. ft.)	132



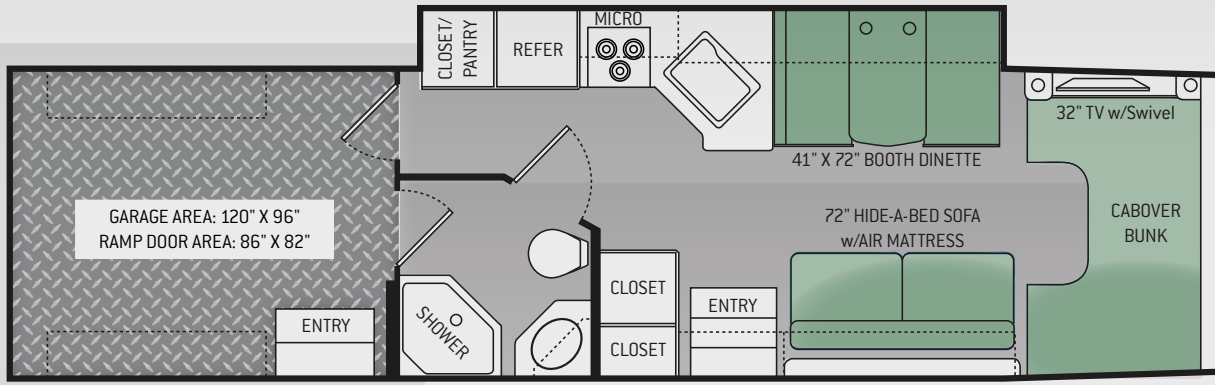
37LS CLASS A

37MD

Gross Vehicle (GVWR)	26,000
Gross Combined (GCWR)	30,000
Wheel Base	252"
Exterior Length (w/o ladder)*	38'-7"
Exterior Height (w/ AC)	12'-10"
Exterior Width (w/o mirrors)	101"
Interior Height	80" - 97"
Awning Size	9' / 13'
Fuel (gal)	80
LPG (lbs)	105
Fresh/Waste/Grey Water (gal)	100/43/43
Exterior Storage Capacity (cu. ft.)	127



37MD CLASS A



35SG	
Gross Vehicle (GVWR)	19,000
Gross Combined (GCWR)	35,000
Wheel Base	255"
Exterior Length (w/o ladder)*	36'-9"
Exterior Height (w/ AC)	11'-7"
Exterior Width (w/o mirrors)	99"
Interior Height	82" - 89"
Awning Size	20'
Fuel (gal)	40R / 28F
LPG (lbs)	68.2
Fresh/Waste/Grey Water (gal)	72/40/47
Exterior Storage Capacity (cu. ft.)	27

35SG_{F550}

HIT THE PARTY DECK

THE GARAGE CAN BE CONVERTED TO THE ULTIMATE PARTY DECK, PERFECT FOR ENTERTAINING AND ENJOYMENT. SAFETY RAILINGS LINE THE EDGES OF THE DECK FOR PEACE OF MIND, WHILE OVERHEAD LIGHTING ILLUMINATES THE EXTERIOR FOR USE DURING THE DAY OR NIGHT.



RAPID CAMP WIRELESS REMOTE SYSTEM ALLOWS CONTROL OF SLIDE ROOMS, LEVELING JACKS, AND PATIO AWNINGS WITH A TOUCH OF A BUTTON FROM UP TO 50' AWAY FROM THE COACH.



OUTLAW. BUILT FOR THE LONG HAUL.



RELIABLE. RUGGED. REGARDED.



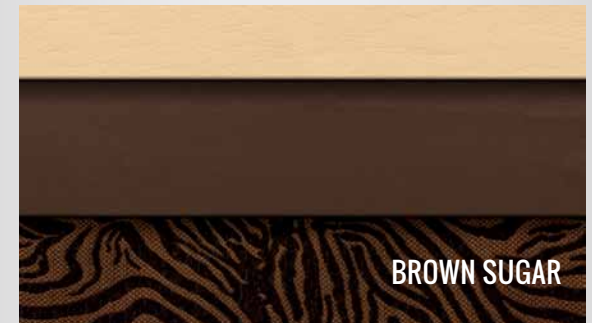
WOOD & INTERIOR CHOICES



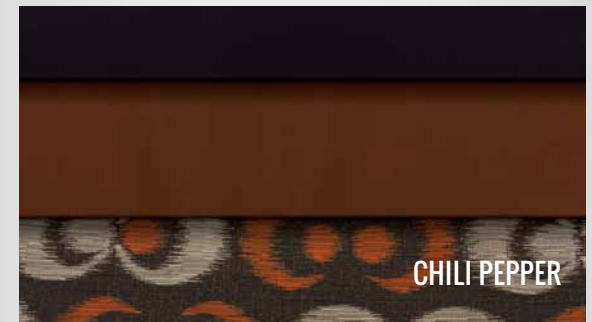
OLYMPIC CHERRY



VINTAGE MAPLE



BROWN SUGAR



CHILI PEPPER



METALLIC

EXTERIOR GRAPHIC CHOICES



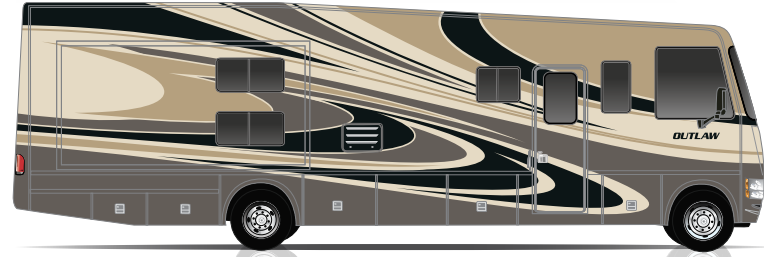
F550 AFTER BURNER HD-MAX™



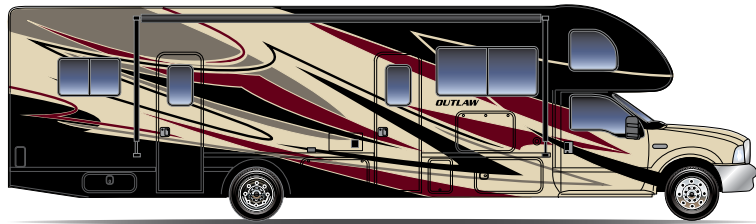
F550 ROCK ISLAND



F550 COLD FUSION HD-MAX™



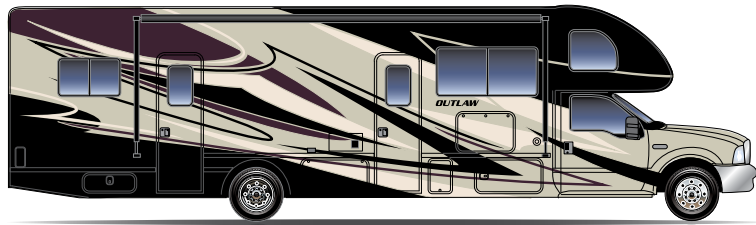
ROCK ISLAND



F550 TANGO RED



TANGO RED



F550 LIQUID ASSET



LIQUID ASSET

STANDARD FEATURES & OPTIONS

CLASS A

EXTERIOR & AUTO

- Ford Chassis - 6.8L Triton V-10 Engine with 5 Speed TorqueShift® Automatic Transmission with Overdrive
- Fiberglass Front Cap
- 5,000-lb Trailer Hitch with 7-way Round Connector
- Automatic Leveling Jacks with Touch Pad Controls
- Full Body Paint Packages with Gel-Coat Sidewalls
- Roto-Cast Storage Compartments
- Electric Patio Awning
- Rear Spot Lights
- Outside Shower
- Remote Fuel Filling Station with Pump and Nozzle
- Black Frameless Windows
- Drop Down Ramp Door with Spring Assist & Patio Railing
- Premium AM/FM Radio with In-Dash CD Player
- LCD Back-up Monitor with Camera
- Heated/Remote Exterior Mirrors with Integrated Side View Cameras
- Electric Day & Night Roller Shade for Windshield
- Reclining Swivel Leatherette Captain's Chairs
- Full Length Rear Mud Flap

EXTERIOR & AUTO OPTIONS

- Frameless Dual Pane Windows

INTERIOR

- Residential Linoleum Throughout
- Tread Plate Non-Slip Flooring in Garage
- Tie Down Rings in Garage
- Ceiling Ducted Air Conditioning System in the Living Areas and Loft
- LED Ceiling Lights
- Leatherette Sofa/Air Bed (37LS)
- Leatherette Sofa/Air Bed in Main Floor Bed (37MD)
- Euro Recliner (37LS)
- Dream Booth Dinette (37LS)
- Leatherette U-Shape Dinette (37MD)
- Manual Roller Day & Night Shades in Living Area
- 12-volt Attic Fan in Garage
- 8 cuft Double Door Refrigerator
- Recessed 3-Burner High-Output Gas Cooktop with Oven
- Residential 30" Over-the-Range Microwave Oven
- 12-volt Attic Fan in Kitchen
- Solid Surface Countertops and Sink Covers
- Large Double Bowl Sink with Single Lever Kitchen Faucet & Sprayer
- Queen Size Bed in Loft (37LS)
- Full Size Bed in Loft (37MD)
- Shower with Glass Shower Door
- 12-volt Attic Fan in Bathroom
- Rapid Camp Remote System*

INTERIOR OPTIONS

- Two Opposing Leatherette Jack-Knife Sofas in the Garage Area

- Electric Overhead Hide-Away Bunk

MULTIMEDIA

- 40" Television in Living Area (37LS)
- 32" Television in Living Area (37MD)
- 19" Television in Loft
- 29" Television in Main Bedroom (37MD)
- 19" Television in Garage
- Exterior Entertainment Center with 32" Television
- Video Package (DVD Player & Control Center)
- Sound System with Exterior Remote in Garage

ELECTRICAL & PLUMBING

- Onan RV QG 5500 Gas Generator w/50-amp Service
- Dual 13,500 BTU Ducted Low Profile Air Conditioners
- 5,000 BTU Air Conditioning System in Garage
- 34,000 BTU Electronic Ignition Furnace
- Dual Auxiliary House Batteries
- 600-watt Inverter
- 6-gallon Gas/Electric Water Heater
- Enclosed Heated Potable & Holding Tanks
- Black Water Tank Flush
- Washer/Dryer Prep in Garage (37LS Only)

CLASS C F550

EXTERIOR & AUTO

- Ford Chassis - 6.7L Power Stroke® V-8 Turbo Diesel with Torq Shift® 6-Speed SelectShift® Automatic Transmission
- Fiberglass Front Cap
- 10,000-lb Trailer Hitch with 7-way Round Connector
- HD-Max Exterior with Graphics Package
- Automatic Leveling Jacks with Touch Pad Controls
- Roto-Cast Storage Compartments
- Electric Patio Awning
- Black Frameless Windows
- Drop Down Ramp Door with Spring Assist & Patio Railing
- Rear Spot Lights
- Outside Shower
- Touchscreen Dash Radio with DVD/CD Player & Back-up Monitor
- Heated/Remote Exterior Mirrors
- Side View Camera System
- Reclining Swivel Leatherette Captain's Chairs
- Fiberglass Running Boards
- Keyless Entry
- Valve Stem Extenders
- Wheel Liners

EXTERIOR & AUTO OPTIONS

- Full Body Paint Packages with Gel-Coat Sidewalls
- Residential Linoleum Throughout
- Tread Plate Non-Slip Flooring in Garage
- Tie Down Rings in Garage
- LED Ceiling Lights
- Leatherette Hide-A-Bed Sofa with Air Mattress
- Dreambooth Dinette
- Manual Roller Day & Night Shades in Living Area
- 10 cuft Double Door Refrigerator
- 3-Burner High-Output Gas Cooktop with Oven
- 30" Over-the-Range Microwave Oven
- Solid Surface Countertops & Sink Covers
- Large Double Bowl Kitchen Sink
- Shower with Glass Shower Door
- Rapid Camp Remote System*

INTERIOR OPTIONS

- Two Opposing Leatherette Jack-Knife Sofas in the Garage Area
- Single Child Safety Tether in Booth Dinette
- Dual Child Safety Tethers in Booth Dinette
- 12-volt Attic Fan in Cab Over
- 12-volt Attic Fan in Kitchen

MULTIMEDIA

- 32" Television with DVD Player in Cab Over
- 19" Television in Garage
- Power Charging Center for Electronics
- Coach Radio System in Garage

MULTIMEDIA OPTIONS

- Exterior Entertainment Center with 32" Television

ELECTRICAL & PLUMBING

- Onan RV QG 5500 LP Gas Generator w/50-amp Service
- Dual 13,500 BTU Low Profile Air Conditioners
- 30,000 BTU Electronic Ignition Furnace
- Dual Auxiliary House Batteries
- 600-watt Inverter
- 6-gallon Gas/Electric Water Heater
- Enclosed Heated Potable & Holding Tanks
- Black Water Tank Flush

ELECTRICAL & PLUMBING OPTIONS

- Onan RV QG 6000 Diesel Generator w/50-amp Service

*Standard on units built after 12/1/2013



P.O. BOX 1486 • ELKHART, IN 46515 • CUSTOMER SERVICE: 800-860-3812 • SALES DEPARTMENT: 800-860-5658 • OUTLAWRV.COM

COPYRIGHT THOR MOTOR COACH, INC. © 2013

