

# *Legacy* SR 300



— TAKEN BY THE ROAD —



# Legacy SR 300



## THE BEST OF BOTH WORLDS

With the Legacy from Forest River you get the best of both worlds, comfort and style. The cockpit is not only designed with driving in mind it's also designed to be comfortable and easy to adjust. The living area is open and inviting and great for entertaining friends and family, your guests will be amazed at the comfort of your Legacy.





340BH MAUI BREEZE CREME DECOR - EXOTIC CHERRY WOOD GRAIN

# Legacy SR 300



## A TRUE HOME ON THE ROAD

The Legacy also features a bunk area (340BH) with abundant storage and flatscreen TVs. The kitchen boasts a standard 30" OTR convection microwave oven, stainless steel sink and a sealed 3-burner cook top, luxuriously surrounded by handcrafted hardwood cabinetry. With amenities such as these, your stay on the road is sure to feel like home.



340BH MAUI BREEZE CREME DECOR - EXOTIC CHERRY WOOD GRAIN

# Legacy SR 300



## RESIDENTIAL IN EVERY WAY

Enjoy the warm and rich residential look and convenient features found throughout the Legacy. Featuring modern design all aspects of the Legacy deliver not only the comfort of home but the conveniences of home as well. The bathroom includes a stainless steel sink and a porcelain foot flush toilet. The living room features a 32" LED flatscreen TV and abundant seating and storage areas.





340BH MAUI BREEZE CREME DECOR - EXOTIC CHERRY WOOD GRAIN

# Legacy SR 300



## RESTING ON YOUR LAURELS

You've worked hard and earned the luxury you deserve. The Legacy delivers everything you could want in a Class A motorhome. Our sleeping areas are so spacious and comfortable you might want to turn in early. The bedroom also features plenty of storage space, so feel free to bring anything you might need for even the longest journey. We have made it the best because we know it's our Legacy.





340BH MAUI BREEZE CREME DECOR - EXOTIC CHERRY WOOD GRAIN

# EXTERIOR PAINT OPTIONS



SILVER SATIN



GOLDEN COAST

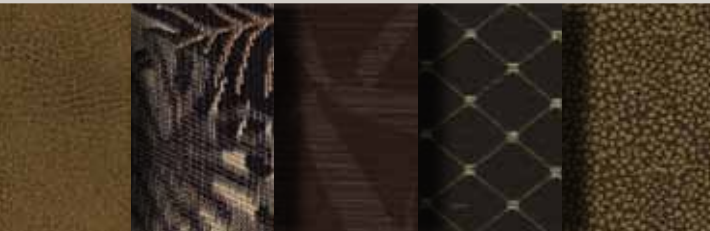
# EXTERIOR FEATURES



1 OPTIONAL EXTERIOR ENTERTAINMENT CENTER BUILT INTO THE SIDEWALL 2 EASILY ACCESS ELECTRICAL FUSES WITH LEGACY'S NO FUSS SCHEMATIC 3 STANDARD CAFE COMPARTMENT DOORS WITH PASS-THRU STORAGE 4 WATER MANIFOLD SYSTEM WITH WHOLE HOUSE FILTER AND EXTERIOR SHOWER 5 CONVENIENT GENERATOR ACCESS

*Legacy* SR 300  
THE JOURNEY STARTS WITH LEGACY

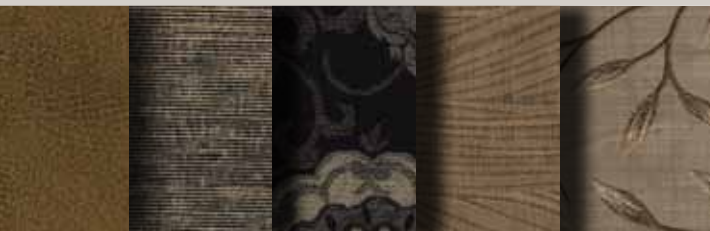
DECOR OPTIONS



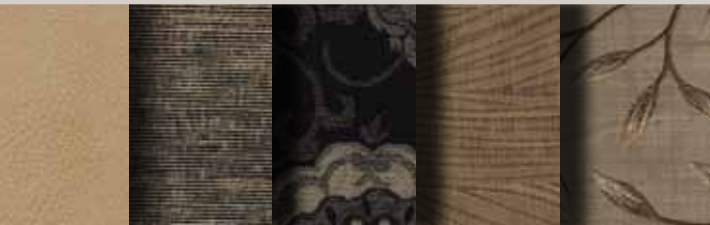
MAUI BREEZE LATTE



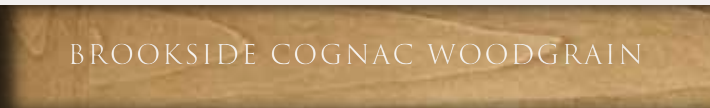
MAUI BREEZE CREAM



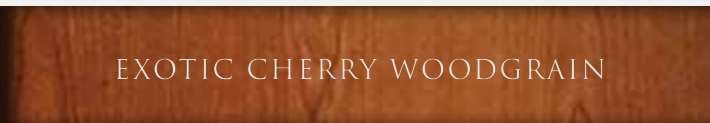
KONA COFFEE LATTE



KONA COFFEE CREAM



BROOKSIDE COGNAC WOODGRAIN



EXOTIC CHERRY WOODGRAIN

# STANDARDS AND OPTIONS

LEGACY FLOORPLAN	340BH	340KP	360RB	LEGACY FLOORPLAN	340BH	340KP	360RB
<b>AUTOMOTIVE &amp; COCKPIT</b>				· FOUR (4) POINT FULLY AUTOMATIC HYDRAULIC LEVELING SYSTEM			
· FREIGHTLINER XCS CHASSIS	S	S	S	· HEATED EXT/MIRRORS WITH INTEGRATED CAMERAS	S	S	S
· CUMMINS ISB 300 HP DIESEL ENGINE	S	S	S	· FRAMELESS DUAL PANE, DARK TINT WINDOWS	S	S	S
· ALLISON MH-2500 TRANSMISSION	S	S	S	· AUTOMOTIVE FOAM AND SEAL, ZIEBART UNDERCOATING	S	S	S
· "22.5" STAINLESS STEEL WHEEL INSERTS"	S	S	S	· ELECTRIC PATIO AWNING	S	S	S
· TRAILER HITCH, 10,000 LBS	S	S	S	· SIDE-HINGED EXTERIOR COMPT DOORS W/ FULL PASS THROUGH STORAGE	S	S	S
· TRAILER HITCH CAPACITY, 5,000 LBS	S	S	S	· BUNK BED INCLUDES TWO (2) FLIP DOWN MONITORS W/ DVD AND A/V INPUT AND TWO (2) WIRELESS HEADPHONES	S	N/A	N/A
· ELECTRIC PUSH BUTTON SHIFTER	S	S	S	· FIBERGLASS ROOF	S	S	S
· 90 GALLON, DUAL FILL FUEL TANK	S	S	S	· SLIDING STORAGE TRAY	S	S	S
· 13 GALLON DEF TANK	S	S	S	· LAYERED VACUUM BONDED ROOF	S	S	S
· LCD ENGINE MESSAGE CENTER	S	S	S	· VACUUM BONDED FLOOR W/ TUBULAR STEEL FRAME	S	S	S
· DAY TIME RUNNING LIGHTS	S	S	S	· VACUUM BONDED SIDEWALLS	S	S	S
· 7-PIN TOW POWER CONNECTOR	S	S	S	· GEL-COATED FIBERGLASS SKIN	S	S	S
· 18.7 CFM AIR COMPRESSOR	S	S	S	· "1/2" STRUCTURE WOOD FLOORING"	S	S	S
· FARR ECO-AIR CLEANER	S	S	S	· BLOCK FOAM POLYSTYRENE INSULATION	S	S	S
· AIR FILTER RESTRICTION INDICATOR	S	S	S	· CHANNELED DRAINS FOR A/CS	S	S	S
· FUEL/WATER SEPARATOR	S	S	S	· STEEL BASEMENT CONSTRUCTION	S	S	S
· HEATED AIR DRYER	S	S	S	· TUBULAR STEEL FRONT BULKHEAD	S	S	S
· AUTOMATIC, HEATED MOISTURE EJECTORS	S	S	S	· SHOWER SKYLIGHT	S	S	S
· POWER STEERING	S	S	S	· REAR LADDER	S	S	S
· WASHER/WIPER W/ INTERMITTENT FUNCTION	S	S	S	· "82" INTERIOR CEILING HEIGHT"	S	S	S
· 160 AMP ALTERNATOR	S	S	S	<b>ELECTRICAL STANDARDS</b>			
· TWO (2) 950 CCA AT 0 DEGREE FAHRENHEIT, MAINT. FREE	S	S	S	· 50A SERVICE W/AUTO TRANSFER SWITCH & POWER CORD	S	S	S
· FULL AIR ABS BRAKES W/ AUTO SLACK ADJUSTER	S	S	S	· 6.0 ONAN DIESEL GENERATOR	S	S	S
· ENGINE BRAKE	S	S	S	· ELECTRONIC BATTERY DISCONNECT SWITCH	S	S	S
· TELESCOPIC/TILT STEERING WHEEL	S	S	S	· REMOTE GENERATOR START SWITCH (ON DASH)	S	S	S
· NEWAY AIR SUSPENSION FRONT AND REAR	S	S	S	· LED LIGHTING PACKAGE	S	S	S
· HEAVY DUTY FRONT SHOCK ABSORBERS	S	S	S	· DRIVE/PASS MAP LIGHTS	S	S	S
· HEAVY DUTY STABILIZER BAR	S	S	S	· (1) WALL SCONCE	N/A	N/A	S
· 55 DEGREE WHEEL CUT	S	S	S	· DASH, AUXILIARY START SWITCH	S	S	S
· I-BEAM SUSPENSION W/ BELL CRANK	S	S	S	· BEDROOM INDIVIDUAL READING LIGHTS	S	S	S
· AIR SUSPENSION DEFLATION SYSTEM	S	S	S	· 1200 WATT INVERTER/CONVERTER	S	S	S
· CROSS FLOW, REAR MOUNTED RADIATOR	S	S	S	· FOUR (4) SIX VOLT HOUSE BATTERIES	S	S	S
· TRANSMISSION OIL COOLER	S	S	S	· TWO (2) MASTER ELECTRIC SHUT OFF SWITCHES	S	S	S
· 5 YEAR / 100,000 MILE COOLANT (SOME MAINTENANCE REQUIRED)	S	S	S	· POWER ENTRANCE STEP	S	S	S
· 4-SPOKE VIP BLACK STEERING WHEEL	S	S	S	· PATIO LIGHT	S	S	S
· ENTRY ASSIST HANDLE	S	S	S				
· ELECTRONIC CRUISE CONTROL W/ HIGH IDLE	S	S	S				
· TELESCOPIC/TILT STEERING WHEEL	S	S	S				
<b>CONSTRUCTION &amp; EXTERIOR</b>							
· FIBERGLASS FRONT AND REAR CAPS	S	S	S				
· FULL BODY PAINTED EXTERIOR (CLEAR COAT) 4-COLOR	S	S	S				

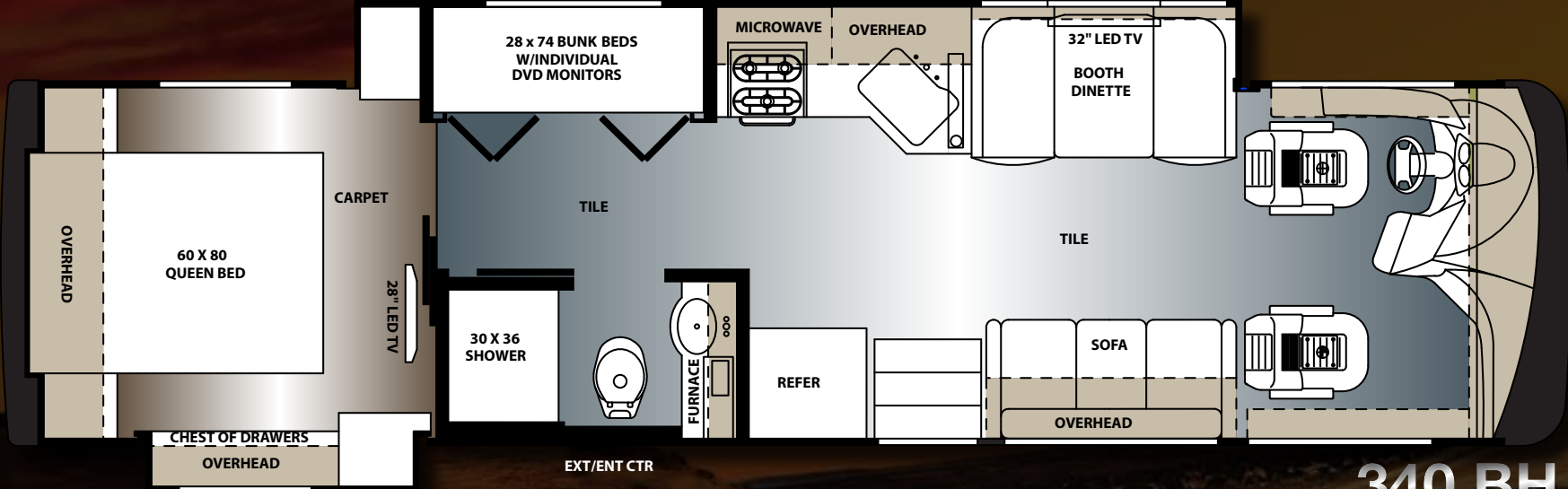
LEGACY FLOORPLAN	340BH	340KP	360RB	LEGACY FLOORPLAN	340BH	340KP	360RB	LEGACY FLOORPLAN	340BH	340KP	360RB	
<u>PLUMBING STANDARDS</u>				· TWO (2) DASH STEREO SPEAKERS				<u>EXTERIOR OPTIONS</u>				
· VARIABLE SPEED CONSTANT PRESSURE WATER PUMP	S	S	S	· SIRIUS SATELLITE RADIO CAPABLE	S	S	S	· FRONT MASK PROTECTIVE FILM		O	O	O
· BATH-STAINLESS STEEL SINKS	S	S	S	· DVD PLAYER	S	S	S	· EXTERIOR ENTERTAINMENT CENTER IN SIDEWALL: 32" TV		O	O	O
· KIT/STAINLESS STEEL SINK-UNDERMOUNT	S	S	S	<u>INTERIOR</u>				· LIGHTED LED AWNING		O	O	O
· BLACK WATER TANK FLUSH SYSTEM	S	S	S	· VINYL TILE FORWARD OF THE BEDROOM	S	S	S	<u>DRIVER/PASSENGER AREA OPTIONS</u>				
· SINGLE LEVER FAUCET W/ PULL-OUT SPRAYER	S	S	S	· CARPETED LIVING ROOM AND DINING SLIDE-OUTS	S	S	S	· ELECTRIC EASY-BED O/H COCKPIT AREA		O	O	O
· DOUBLE LEVER LAVATORY FAUCETS	S	S	S	· BEDROOM CARPET W/ PADDING	S	S	S	· GPS		O	O	O
· ABS SHOWER W/ GLASS DOOR	S	S	S	· MATTRESS QUEEN 60" X 80" (312 COIL EVERETT SLATE)				<u>APPLIANCE OPTIONS</u>				
· PORCELAIN CHINA TOILET	S	S	S	· HIDE-A-BED SOFA	N/A	N/A	S	· RESIDENTIAL REFRIGERATOR W/ 2000 WATT INVERTER AND AUTO GEN START		O	O	O
· TECHMA MACERATOR TOILET REAR BATHROOM	N/A	N/A	S	· JACK KNIFE SOFAS	S	S	N/A	· STACKABLE WASHER/DRYER		N/A	O	O
· WHOLE HOUSE FILTER	S	S	S	· LOVE SEAT	N/A	N/A	N/A	· SEALED 3-BURNER COOK TOP W/ OVEN		O	O	O
· EXTERIOR, SHOWER HOSE	S	S	S	· SOLID SURFACE KIT & DIN C- TOPS W/ FLUSH MOUNT SINK AND STOVE COVER	S	S	S	<u>DECOR OPTIONS</u>				
<u>DRIVER/PASSENGER AREA STANDARDS</u>				· FULL EXTENSION METAL DRAWER GUIDES W/ BALL BEARINGS THROUGHOUT	S	S	S	· BROOKSIDE COGNAC WRAPPED STYLE OPTIONAL COLORS		O	O	O
· ONE PIECE WINDSHIELD	S	S	S	· STORAGE COMPARTMENT FOR RANGE AND SINK COVERS	S	S	S	· EXOTIC CHERRY WRAPPED STYLE OPTIONAL COLORS		O	O	O
· POWER FRONT NIGHT SHADE	S	S	S	· KITCHEN PANTRY	N/A	S	S	<u>SAFETY STANDARDS</u>				
· MANUAL PASSENGER & DRIVER WINDOWS NIGHT SHADES	S	S	S	· DREAM BOOTH DINETTE W/ STORAGE UNDERNEATH	S	S	S	· 110 GFI PROTECTED CIRCUITS		S	S	S
· FOG LIGHTS	S	S	S	· DUCTED A/C SYSTEM	S	S	S	· CARBON MONOXIDE DETECTOR		S	S	S
· DASH RADIO W/ INTEGRATED COLOR BACK-UP AND SIDE CAMERA PACKAGE	S	S	S	· "SOFT TOUCH" PADDED CEILING	S	S	S	· LP GAS DETECTOR		S	S	S
· WRAP AROUND COCKPIT W/ INSTRUMENT CLUSTER	S	S	S	· ROLLER STYLE SUN AND BLACKOUT SHADES	S	S	S	· SMOKE ALARM		S	S	S
· 6-WAY POWER DRIVER SEAT	S	S	S	· BEDSIDE WARDROBE	S	S	N/A	· EGRESS WINDOW'S		S	S	S
· LEATHERITE DRIVER/PASSENGER SEAT	S	S	S	· DRESSER DRAWERS AND WARDROBE TYPE CABINETS	S	S	S	· SURFACE MOUNTED FIRE EXTINGUISHER		S	S	S
· (2)-COCKPIT TABLE/1-PAD/CONSOLE STATIONS	S	S	S	· BEDROOM, OVERHEAD CABINETS	S	S	S					
· LIGHTED STEP WELL	S	S	S	· QUEEN BED W/ BEDSPREAD AND DECORATIVE PILLOWS	S	S	S					
· TWO (2) DEFROSTER FANS W/ HIGH AND LOW SETTINGS	S	S	S	· BED NIGHT STANDS	S	S	S					
· DRIVER/PASSENGER CUP HOLDERS	S	S	S	· MIRRORED MEDICINE CABINETS	S	S	S					
· AUTOMOTIVE DASH AC/HEATER W/ DELUXE CONTROLS	S	S	S	<u>APPLIANCES</u>								
<u>ENTERTAINMENT</u>				· (2)13,500 BTU AIR CONDITIONERS	S	S	S					
· 32" LED TV, LIVING ROOM	S	S	S	· CONTINUOUS GAS WATER HEATER	S	S	S					
· 28" LED TV, BEDROOM	S	S	S	· 35,000 BTU FURNACE	S	S	S					
· SOUND BAR W/RADIO & INTEGRATED SUBWOOFER	S	S	S	· 30" OTR CONVECTION MICROWAVE OVEN	S	S	S					
· SATELLITE TV PREP	S	S	S	· 9 CUBIC FT. DOMETIC REFER W/ICE MAKER	S	S	S					
· CABLE TV PREP	S	S	S	· SEALED 3-BURNER COOK TOP	S	S	S					
· HD ANTENNAE WITH SIGNAL STRENGTH INDICATOR	S	S	S	· FAN IN BATHROOM	S	S	S					
· A/V DISTRIBUTION FOR ENTERTAINMENT	S	S	S	· FAN IN GALLEY W/THERMOSTAT CONTROL	S	S	S					
				· WASHER/DRYER PREP	N/A	S	S					



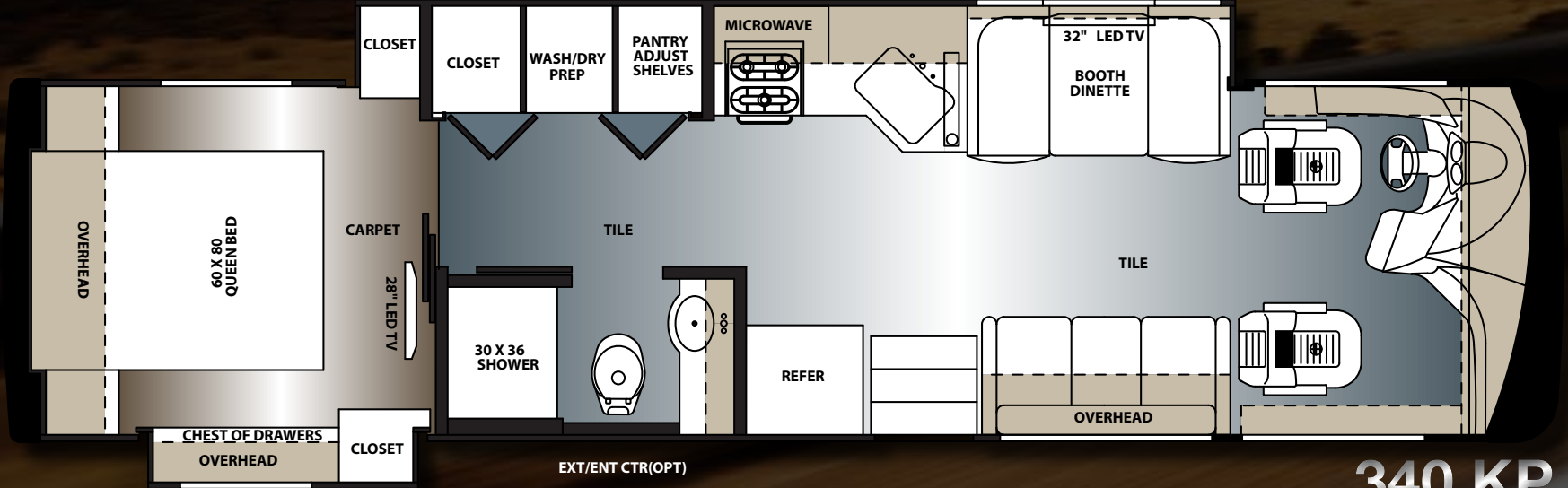
# Legacy SR 300

THE JOURNEY STARTS WITH LEGACY

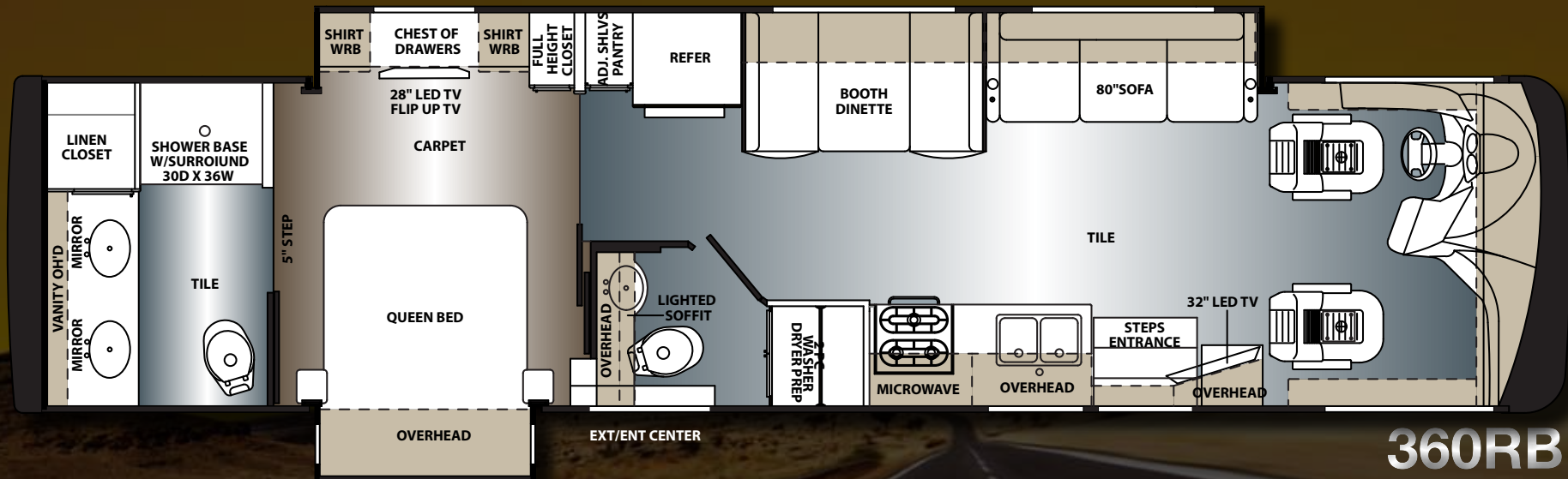
# FLOORPLANS



340 BH



340 KP



**360RB**

## LEGACY SPECIFICATIONS

LEGACY SPECIFICATIONS	340BH	340KP	360RB
BLACK TANK (GAL)	44	44	44
FRESH WATER TANK (GAL)	84	84	84
GREY TANK (GAL)	44	44	44
LP TANK (GAL)	24.5	24.5	24.5
WHEEL BASE	208"	208"	208"
OVERALL WIDTH	100"	100"	100"
FURNACE OUTPUT (BTU)	35,000	35,000	35,000
*APPROX OVERALL LENGTH W/OUT LADDER (LADDER ADD 6")	36'	36'	"38' 10"
*APPROX OVERALL HEIGHT	12' 5"	12' 5"	12' 5"
*APPROX OVERALL COMPARTMENT STORAGE (CU. FT.)	101.5	101.5	122
GIRARD CONTINUOUS HOT WATER	S	S	S

300HP WITH ALLISON 2500 6-SPEED TRANSMISSION	340BH	340KP	360RB
GWR	28,000	28,000	28,000
GCWR	33,000	33,000	33,000
GAWR (FRONT AXLE)	10,500	10,500	10,500
GAWR (REAR AXLE)	17,500	17,500	17,500

# Legacy SR 300



Forest River, Inc. encourages our customers to purchase their Forest River products from a local dealership whenever possible for the following reasons:

It is the goal of Forest River, Inc. that all of our RV owners fully enjoy the RV experience and that customer satisfaction meets or exceeds their expectations!

- 1) Forest River, Inc. dealers are independently owned and operated businesses so priority service and scheduling is at their discretion and is often provided to customers that purchased their unit at that dealership.
- 2) Purchasing locally allows customers to establish meaningful relationships with a dealer, enhancing the RV experience through assistance with product questions, user tips or RV regulations for your state or country, and much more!
- 3) Canadian customers must meet requirements to bring an RV purchased out of the country to their home. These requirements may involve additional inspections and certifications, taxes and fees. Your local Canadian Dealer is a professional at meeting these requirements.
- 4) Scheduling timely warranty repairs and adjustments through a local dealership provides far greater flexibility and convenience to you, the customer!



## PRE-DELIVERY INSPECTION FACILITY

20,000 square feet of quality assurance. The bare essentials for a premium product. This state-of-the-art facility gives immediate daily feedback to production for quality assurance in every unit built.



**Learn More**  
Scan this barcode using a QR Reader on your smart phone to learn more about Forest River.



A Berkshire Hathaway company.

Forest River, Inc. - Diesel Motorized Division  
1800 West Hively Avenue, Elkhart, IN 46515  
(574) 522-3693 [www.forestriverinc.com/berkshire](http://www.forestriverinc.com/berkshire)

All specifications contained herein are based on the latest product information at time of printing. Forest River reserves the right to make changes in colors, materials, equipment and specifications at any time without notice and assumes no responsibility for any errors in this brochure. The pictures in this brochure may show props and optional equipment. PLD918

© 2014 - Legacy - a division of Forest River Inc.  
A Berkshire Hathaway company

**YOUR LEGACY DEALER**