

SPRINTER

by Keystone

TRAVEL TRAILERS & FIFTH WHEELS



Camping
made easy



WIDER
AND
LIGHTER





*Sprinter offers
 you its proudest
 distinction
 between other brands.
 A product designed
 to enhance your
 experience and...*

**MAKE
 CAMPING
 EASY!**

311BHS SHOWN IN SANDALWOOD DECOR



**NEED ROOM
 FOR THE KIDS?**

*Everyone has their own space
 with our spacious bunk room
 with plenty of built in storage.*



Sprinter was Introduced in 1996 as Keystone's first product line. Sprinter's goals remain simple; take the suggestions from our customers and make them the foundation for the Sprinter design. Let us show you how Sprinter offers a new level of affordable luxury.



NEED MORE STORAGE?

From our oversized pots and pans drawer to our overhead storage and residential style pantry, we have a place for everything!

SPRINTER TRAVEL TRAILERS FLOORPLANS



266RBS



278BHS



295RKS



299RET



302RLS



311BHS



316BIK



320BHS



323BHS



328RLS



331RLS



370FLS

Feels like home, So relax, we make it easy.

At Sprinter we understand that finding the time to relax is often hard to do. So for the time you find to slow down and enjoy North America's beauty, we want you to be able to enjoy every minute of it. Take a look at a Sprinter today and let us show you, how we "MAKE CAMPING EASY".



WWW.KEYSTONERV.COM/SPRINTER

VISIT OUR WEBSITE TO VIEW INTERIOR PHOTOS,
360 VIRTUAL TOURS AND MUCH MORE.



CONNECT WITH KEYSTONE RV

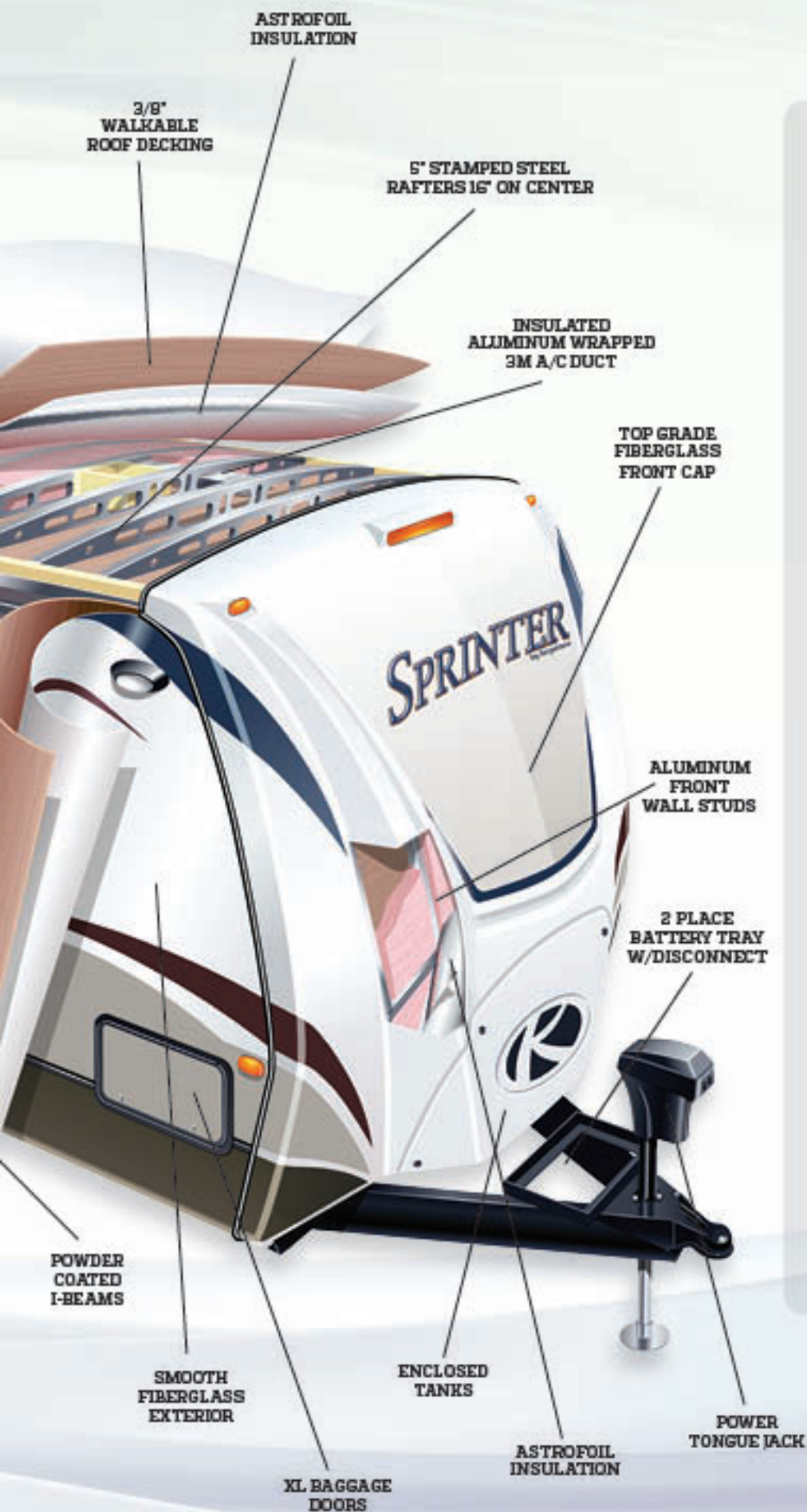
VISIT OUR SOCIAL MEDIA SITES FOR CURRENT
SPRINTER NEWS AND INFORMATION.



| MODEL | 266RBS | 278BHS | 295RKS | 299RET | 302RLS | 311BHS |
|-------------------|--------|--------|--------|--------|---------|--------|
| SHIPPING WEIGHT | 6495 | 7185 | TBD | 7935 | 7385 | 7760 |
| CARRYING CAPACITY | 3060 | 2665 | TBD | 2915 | 2815 | 2890 |
| HITCH WEIGHT | 755 | 785 | TBD | 970 | 860 | 885 |
| EXTERIOR LENGTH* | 29' 8" | 31' 8" | TBD | 36' 4" | 33' 11" | 35' 8" |
| EXTERIOR HEIGHT | 11' | 11' 3" | TBD | 11' 3" | 11' 3" | 11' 3" |
| FRESH WATER | 45 | 45 | TBD | 45 | 45 | 45 |
| WASTE WATER | 40 | 43 | TBD | 40 | 40 | 40 |
| GRAY WATER | 83 | 86 | TBD | 83 | 83 | 80 |
| LPG CAPACITY LB. | 60 | 60 | TBD | 60 | 60 | 60 |

| MODEL | 316BIK | 320BHS | 323BHS | 328RLS | 331RLS | 370FLS |
|-------------------|--------|--------|--------|---------|--------|--------|
| SHIPPING WEIGHT | 8140 | 7820 | 8110 | 8320 | 7825 | 8425 |
| CARRYING CAPACITY | 2970 | 3030 | 3010 | 2795 | 3175 | 2775 |
| HITCH WEIGHT | 950 | 920 | 960 | 955 | 965 | 1120 |
| EXTERIOR LENGTH* | 35' 8" | 36' 2" | 37' | 36' 11" | 35' 1" | 40' 0" |
| EXTERIOR HEIGHT | 11' 3" | 11' 3" | 11' 3" | 11' 3" | 11' 3" | 11' 3" |
| FRESH WATER | 45 | 45 | 45 | 45 | 45 | 75 |
| WASTE WATER | 40 | 40 | 43 | 40 | 40 | 40 |
| GRAY WATER | 80 | 80 | 83 | 83 | 83 | 83 |
| LPG CAPACITY LB. | 60 | 60 | 60 | 60 | 60 | 60 |

DISCLAIMER: Product information is as accurate as possible as of the date of publication of this brochure. All features, floor plans, and specifications in this brochure are subject to change without notice. Please also consult Keystone's web site at www.keystonerv.com for more current product information and specifications. Tow Vehicle Disclaimer: CAUTION: Owners of Keystone recreational vehicles are solely responsible for the selection and proper use of tow vehicles. All customers should consult with a motor vehicle manufacturer or their dealer concerning the purchase and use of suitable tow vehicles for Keystone products. Keystone disclaims any liability or damages suffered as a result of the selection, operation, use or misuse of a tow vehicle. KEYSTONE'S LIMITED WARRANTY DOES NOT COVER DAMAGE TO THE RECREATIONAL VEHICLE OR THE TOW VEHICLE AS A RESULT OF THE SELECTION, OPERATION, USE OR MISUSE OF THE TOW VEHICLE. 11/13



- An Upgraded Insulation Package That Was Independently Tested to Perform at 0-Degrees and 100-Degrees!
- Space Age Astrofoil Technology
- **STANDARD** on ALL Travel Trailers and Fifth Wheels
- R-9 Walls, R-28 Roof, R-30 Floor, R-20 Front & Back wall



- Wide Stance Axles
- Larger Frames
- Increased Living Space (5%+ on most models)
- 2" Walls
- 80" Interior Height
- Half Ton Towable

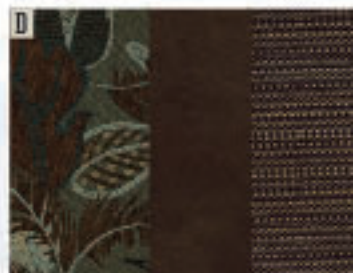
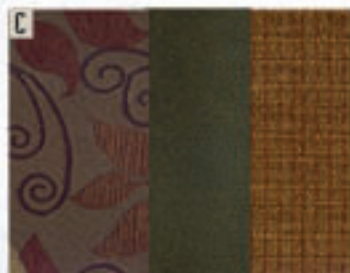
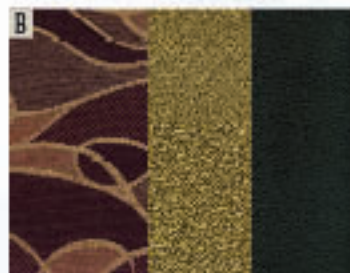
The Evolution of SPRINTER

- 100" Wide Body Construction
- Sprinter Emperor Bed on All TT and FW Floorplans (65" x 74")
- Larger Bunk Mats (30" & 36" Sizes Only)
- Light-Weight HD Construction
- Wide Stance Axles
- Larger Frames (10" on TT & FW)
- 2" Walls
- 80" Interior Height
- All Norco Cable Slide System
- Max Turn Technology (FW Only)
- Bluetooth Stereo
- Weight Reduction of 500-700 Pounds Per Floorplan
- Increase of 5% Additional Usable Interior Space
- New Front Cap with LED Lights (FW Only)
- 90lb. LP Capacity (FW Only)
- Large 42" Shower w/Seat (FW Only)
- Upgraded Performance Insulation Package on All TT and FW
- Refreshed Graphics Package
- LED Awning Lights
- Awning w/Integrated Speakers
- Class Leading Tank Capacities
- Heated Pass Through (FW Only)
- All New Decors
- New Decor Option with Fabrics by 



⬇️ Camping Made Easy

With a variety of floorplans ranging from rear living room models, side aisle models, and bunk house models, you can select the Sprinter Copper Canyon Edition that is just right for the way you live.



EXTERIOR FEATURES

- All aluminum construction w/galvanized steel stamped roof trusses
- 100" Wide body construction
- Wide stance axles
- Performance insulation package
- Friction hinge awning adjustment
- Auto dump awning
- Backed for rear ladder (except 299)
- 2 Battery placement
- Splash guard under slide
- Laminated aluminum framed sidewalls
- Enclosed underbelly with direct vent heat
- E-Z Lube axles
- Next Generation Fiberglass Front Cap
- Tinted safety glass windows
- Power Tongue Jack
- One touch electric awning
- Friction Hinge Entry Door
- Extra large lockable, radius baggage doors
- Rear bumper storage
- 9" easy opening triple entry step
- Entry step light
- Hitch light
- Exterior clearance lights
- Battery disconnect system
- Extra large Folding Grab Handle
- Tough guard painted skirt metal
- Extra long rain gutters and spouts
- Two 30lb. LP bottles with automatic change-over
- Roto-cast seamless holding tanks
- Black tank flush system
- Outside shower
- Keystone Original space maker 80 gallon fresh water system
- 30' 30 Amp power cord
- Cable and satellite hook-up
- Easy access manual override for the slide rooms
- Aluminum wheels
- Radial Tires
- Spare tire
- Outside speakers in awning
- LED light strip at base of awning
- Light at the termination points
- Picnic Table in pass through
- Back-up light
- Toylok Security System
- Upgraded two burner cook-top (Outside Kitchen models only)
- Bumper mounted grill w/LP gas connection (Outside Kitchen models only)
- 12V Power plug (Outside Kitchen models only)

INTERIOR FEATURES

- Full 96" interior width (Added square footage)
- Washer/Dryer prep (299RET, 370FLS only)
- 80" Interior Height

- 12 Volt, 55 amp converter
- 35,000 BTU auto-ignition furnace
- 13,500 BTU ducted air conditioner with "Quick Cool"
- Windows in both Slide-room end walls (N/A in bedroom slide-room on TT)
- Water heater bypass for easy winterization
- Digital Thermostat
- Residential cabinet hardware
- Large picture window at the dinette
- 12 volt slide room lights for dry camping
- Overhead slide room cabinets
- In floor ducted heat
- LED floor lighting
- Easy Find light switches
- Central Command Center for monitoring all tanks and battery, awning, slide-outs, lights, etc.
- Screwed cabinetry with lumber-core stiles
- Beauflor Linoleum

LIVING ROOM FEATURES

- Cable TV hook-up with antenna and signal booster
- Satellite prep with RG-6 cable
- High grade carpeting
- Residential fabric-covered valances w/removable drapes
- Angled overhead storage in the slide room
- Home theater DVD/CD/AM/FM/MP3 hookup w/Bluetooth
- Fold out sleeper sofa w/storage
- 32" HD LED Television

BATH FEATURES

- Large vanity sink
- Porcelain foot flush toilet
- Residential medicine cabinet with mirror
- ABS one piece tub surround
- Neo angle glass shower (non bunks)
- Skylight over tub
- Reinforced tub support
- Power roof vent fan
- GFI receptacles in the bathroom

KITCHEN FEATURES

- Crown Molding in cabinetry
- 6 gallon gas/electric DSI auto ignition water heater w/ 16.2 gph recovery
- 3 burner high output gas range
- Large single bowl sink with cover
- Full extension ball bearing metal drawer guides
- Metal pull-out sprayer faucet
- Waste basket storage
- Lighted range hood with exhaust fan
- Microwave with carousel
- 17" oven
- Double door refrigerator

- Raised panel cabinet door uppers
- Overhead cabinets above the sink
- Oversized pots and pan drawer

BEDROOM FEATURES

- Cable TV hook-up
- Sprinter Emperor bed 65"x74" (All models)
- High grade carpet in master bedroom
- Under bed storage w/ gas struts
- Color matched bedspread
- Bedroom reading lights
- Dream Collection Mattress
- Electrical outlets near the bed
- Roof vent

SAFETY FEATURES

- Dual hitch safety chains
- Safety glass windows
- Fire extinguisher
- Smoke detector
- Carbon monoxide detector
- Egress windows
- LP gas leak detector
- Break away safety brake
- 4 wheel electric brakes
- Security light
- Back up light

CAMPING MADE EASY PACKAGE

- Manual override for the slide rooms above slides
- Exterior speakers extended in awning arms
- Electric awning with self dump & friction hinge set
- Friction hinge entry door
- Toylok Security System
- Picnic Table in pass thru storage
- E-Z Lube axles
- Battery disconnect
- Back-up light
- Black tank flush
- Outside shower
- Dream Collection Mattress
- Easy Find light switches
- LED floor lights
- Bumper mount grill w/LP hook-up (Out side Kitchen models only)
- 12V Light at pump valve

POPULAR OPTIONS

- Upgraded 15,000 BTU air conditioner
- Free standing dinette with four chairs
- Sleeper sofa in place of lower bunk and trundle (311BHS, 316BIK)
- 50 AMP electrical service (excludes 266, 278 models)
- Recliner IPO swivel rocking chairs
- 2nd A/C



01

02

03



06

05



04

07



CAMPING
made



08



09



10



WIDER
AND
LIGHTER

| |
|---------|
| TT & FW |
| TT ONLY |
| FW ONLY |

- 01. 100" Wide Body Construction
- 02. Max Turn Technology
- 03. Upgraded Insulation Package
- 04. Norco Cable Slides
- 05. LED Awning Lights & Speakers

- 06. Large 42" Shower w/Seat
- 07. All Weather Fold Out Table
- 08. LED Floor Lights
- 09. Auto-On Backup Light
- 10. Emperor Beds in EVERY FW/TT

Camping easy

DER
ND
ER

11



12



13



14



15



16



17



18



19



20



- 11. Fiberglass Front Cap w/Enclosed Tanks
- 12. Omni Directional Antenna
- 13. Black Tank Flush
- 14. 90lb. Tank Capacity
- 15. Bluetooth Stereo

- 16. Battery Disconnect
- 17. Friction Hinge Door
- 18. Power Tongue Jack
- 19. Friction Hinge Awning w/Manual Override
- 20. ToyLok Security System

• SPRINTER FIFTH WHEELS •
COPPER CANYON EDITION
INTERIORS

292FWRL5 SHOWN IN SANDALWOOD DECOR



**LUXURY YOU'LL
LOVE, VALUE YOU
CAN LIVE WITH.**

*Built upon the foundation
of Keystone's first product
line, Copper Canyon by
Sprinter "Makes Camping
Easy" by combining luxury
and value in one beautiful
fifth wheel.*



269FWRL5 KITCHEN

269FWRL5 BATHROOM

◉ **SPRINTER FIFTH WHEELS** ◉
 COPPER CANYON EDITION
 INTERIORS & MORE



GOT HEAVY ITEMS?

With our full extension steel drawer guides we can handle it! Remember we said we give you a place to store everything? Well, you can even store all of your kitchen tools out of sight with our oversized pots and pans drawer.

OUTDOOR KITCHEN

At Sprinter, we believe that beautiful days should be enjoyed outside with friends and family. With a fully equipped outdoor kitchen on models: (TT-266, 311, 316 and 328) (FW-314, 324, 343). You can now prepare that family meal while enjoying the company of others outside.



333FWFLS EXTERIOR STORAGE



SPRINTER OVERSIZED POTS & PANS DRAWER

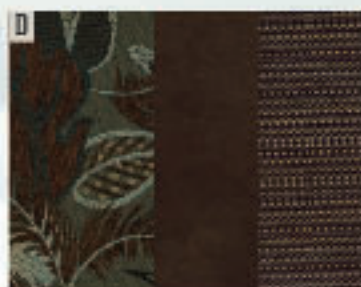
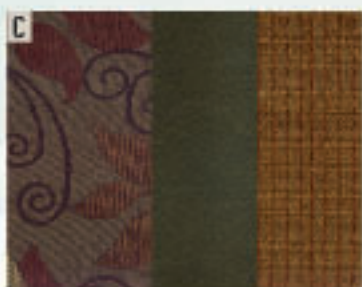
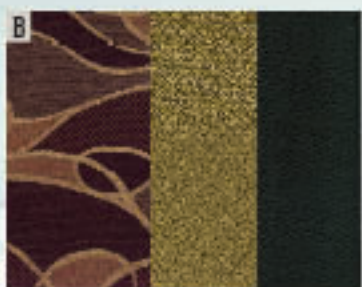
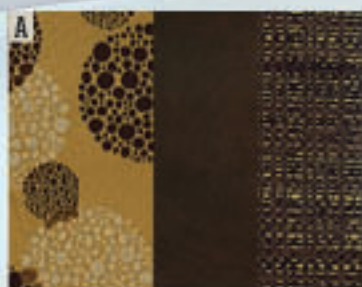


SPRINTER SINK & COUNTERTOP



OUTDOOR KITCHEN

◉ **SPRINTER FIFTH WHEELS** ◉
COPPER CANYON EDITION
INTERIORS



DECOR OPTIONS | **A. ALDER** **C. SANDALWOOD**
B. BLACKSTONE **D. SLATE GRAY**



Better Homes
 REALTY COLLECTION

296FWRLS SHOWN IN ALDER DECOR



EMPEROR
BED
 65" WIDE

289FWRLS BEDROOM

SPRINTER FIFTH WHEELS
COPPER CANYON EDITION
FLOORPLANS & SPECIFICATIONS



252FWRLS



269FWRLS



296FWRLS



304FWRKS



314FWRLS



324FWBHS



333FWFLS

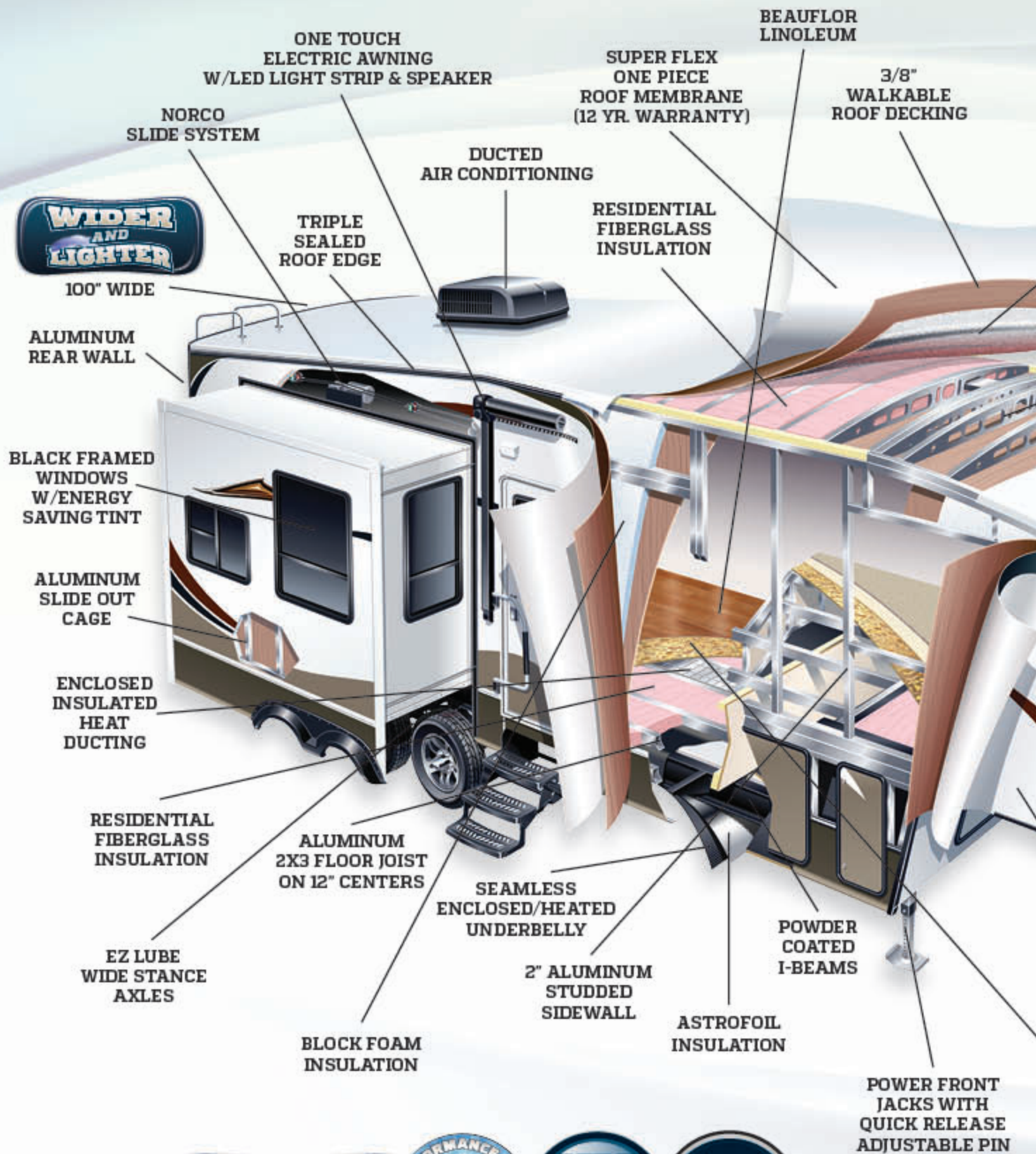


343FWBHS

| MODEL | 252FWRLS | 269FWRLS | 296FWRLS | 304FWRKS | 314FWRLS | 324FWBHS | 333FWFLS | 343FWBHS |
|-------------------|----------|----------|----------|----------|----------|----------|----------|----------|
| SHIPPING WEIGHT | 7595 | 8510 | 9255 | 8915 | 9840 | 10375 | 9425 | 10910 |
| CARRYING CAPACITY | 2910 | 3090 | 2845 | 3150 | 3160 | 3075 | 3325 | 2890 |
| HITCH WEIGHT | 1495 | 1565 | 2005 | 1905 | 2075 | 1995 | 1875 | 2065 |
| EXTERIOR LENGTH* | 30' 3" | 32' 7" | 33' 10" | 33' 10" | 36' 4" | 38' 6" | 37' 4" | 39' 4" |
| EXTERIOR HEIGHT | 12' | 12' 5" | 12' 5" | 12' 5" | 12' 6" | 12' 8" | 12' 6" | 12' 6" |
| FRESH WATER | 45 | 51 | 51 | TBD | 51 | 51 | 51 | 87 |
| WASTE WATER | 40 | 40 | 40 | 40 | 40 | 40 | 40 | 83 |
| GRAY WATER | 80 | 40 | 40 | 40 | 40 | 126 | 80 | 80 |
| LPG CAPACITY LB. | 90 | 90 | 90 | 90 | 90 | 90 | 90 | 90 |

DISCLAIMER: Product information is as accurate as possible as of the date of publication of this brochure. All features, floor plans, and specifications in this brochure are subject to change without notice. Please also consult Keystone's web site at www.keystoneRV.com for more current product information and specifications. Tow Vehicle Disclaimer: CAUTION: Owners of Keystone recreational vehicles are solely responsible for the selection and proper use of tow vehicles. All customers should consult with a motor vehicle manufacturer or their dealer concerning the purchase and use of suitable tow vehicles for Keystone products. Keystone disclaims any liability or damages suffered as a result of the selection, operation, use or misuse of a tow vehicle. KEYSTONE'S LIMITED WARRANTY DOES NOT COVER DAMAGE TO THE RECREATIONAL VEHICLE OR THE TOW VEHICLE AS A RESULT OF THE SELECTION, OPERATION, USE OR MISUSE OF THE TOW VEHICLE. 11/13

◉ **SPRINTER FIFTH WHEELS** ◉
 COPPER CANYON EDITION
LITE WITH INTEGRITY





- An Upgraded Insulation Package That Was Independently Tested to Perform at 0-Degrees and 100-Degrees!
- Space Age Astrofoil Technology
- **STANDARD** on ALL Travel Trailers and Fifth Wheels
- R-9 Walls, R-28 Roof, R-30 Floor



- 30% More Turning Radius
- Utilizing the Latest Technology to Create an Increase in Turning Radius



- Wide Stance Axles
- Larger Frames
- Increased Living Space (5%+ on most models)
- 2" Walls
- 80" Interior Height
- Half Ton Towable

● **SPRINTER FIFTH WHEELS** ●
COPPER CANYON EDITION
STANDARDS & OPTIONS

EXTERIOR FEATURES

- All aluminum construction
- Galvanized stamped steel roof rafters
- 100" Wide body
- 90lb. LP bottle storage OR extra 30lb. LP storage
- Slam latch baggage doors
- MaxTurn radius fiberglass front cap w/LED light
- Wide stance axles
- Self dump awning w/friction hinge adjustment
- Docking station - (water, cable, shower, black tank flush)
- Rear ladder
- Splash guard under slide
- Heated pass through compartment
- Laminated aluminum framed sidewalls
- Enclosed underbelly with direct vent heat
- E-Z Lube axles
- Tinted safety glass windows
- Power landing gear
- One touch electric awning
- Friction Hinge Entry Door
- Extra large lockable, radius baggage doors
- Rear bumper storage
- 9" easy opening triple entry step
- Entry step light
- Exterior clearance lights
- Battery disconnect system
- Extra large Folding Grab Handle
- Tough guard painted skirt metal
- Extra long rain gutters and spouts
- Roto-cast seamless holding tanks
- Black tank flush system
- Keystone Original space maker 80 gallon fresh water system
- 30' 50 Amp power cord (except 252)
- Cable and satellite hook-up
- Easy access manual override for the slide rooms
- Aluminum wheels
- Radial Tires
- Spare tire
- Outside speakers in awning arms
- LED Patio light
- Light at the termination points
- Picnic Table in pass through
- Back-up light
- Toylok Security System
- Upgraded two burner cook-top (Outside Kitchen models only)
- Bumper mounted grill w/LP gas connection (Outside Kitchen models only)
- 12V Power plug (Outside Kitchen models only)

INTERIOR FEATURES

- 6' 3" Slide room height
- 12 Volt, 55 amp converter
- 35,000 BTU auto-ignition furnace
- 13,500 BTU ducted air conditioner with "Quick Cool"
- Full 96" interior width (Added Sq. Footage)

- 50 AMP electrical service (Except 252)
- Windows in both Slide-room end walls
- Water heater bypass for easy winterization
- Digital Thermostat
- Residential cabinet hardware
- Large picture window at the dinette
- 12 volt slide room lights for dry camping
- Overhead slide room cabinets
- In floor ducted heat
- LED floor lighting
- Easy Find light switches
- Central Command Center for monitoring all tanks and battery, awning, slide-outs, lights, etc.
- Full extension ball bearing drawer guides
- Screwed cabinetry with lumber-core stiles
- Beauflor Linoleum

LIVING ROOM FEATURES

- 6' 3" Slide room height
- Fireplace (Except 252))
- Ceiling fan (Except 252))
- Pin-up light by sofa
- Cable TV hook-up with antenna and signal booster
- Satellite prep with RG-6 cable
- High grade carpeting
- Residential fabric-covered valances w/removable drapes
- Angled overhead storage in the slide room
- Home theater DVD/CD/AM/FM/MP3 hookup w/Bluetooth
- Fold out sleeper sofa w/storage
- 32" HD LED Television

BATH FEATURES

- 30"x48" Residential shower w/seat (most models)
- Floor to ceiling linen closet (most models)
- Large vanity sink
- Porcelain foot flush toilet
- Residential medicine cabinet with mirror
- ABS one piece tub surround
- Neo angle glass shower (some models)
- Skylight over tub
- Reinforced tub support
- Power roof vent fan
- GFI receptacles in the bathroom

KITCHEN FEATURES

- Slide out pantry (most models)
- Crown molding on cabinetry
- 8 Cu. Ft. Refer (Except 252)
- 12 gallon gas/electric DSI auto ignition water heater w/ 16.2 gph recovery (Except 252)
- 3 burner high output gas range
- Large single bowl sink with cover
- Full extension ball bearing metal drawer guides
- Metal pull-out sprayer faucet
- Waste basket storage
- Lighted range hood with exhaust fan
- Microwave with carousel
- 17" oven

- Double door refrigerator
- Raised panel cabinet door upper and lower
- Overhead cabinets above the sink
- Oversized pots and pan drawer

BEDROOM FEATURES

- Sprinter Emperor bed 65"x74" (All models)
- Flush floor bathroom/bedroom suites (No bedside step-up)
- Wired for 2nd A/C (Except 252)
- Cable TV hook-up
- High grade carpet in master bedroom
- Under bed storage w/ gas struts
- Color matched bedspread
- Bedroom reading lights
- Dream Collection Mattress
- Electrical outlets near the bed
- Roof vent

SAFETY FEATURES

- Safety glass windows
- Fire extinguisher
- Smoke detector
- Carbon monoxide detector
- Egress windows
- LP gas leak detector
- Break away safety brake
- 4 wheel electric brakes
- Security light
- Back up light

CAMPING MADE EASY PACKAGE

- Manual override for the slide rooms above slides
- Exterior speakers extended in awning arms
- Electric awning with self dump & friction hinge set
- Friction hinge entry door
- Toylok Security System
- Picnic Table in pass thru storage
- E-Z Lube axles
- Battery disconnect
- Back-up light
- Black tank flush
- Outside shower
- Dream Collection Mattress
- Easy Find light switches
- LED floor lights
- Bumper mount grill w/LP hook-up (Outside Kitchen models only)
- 12V Light at dump valve

POPULAR OPTIONS

- Upgraded 15,000 BTU air conditioner (Std. on all models except 252)
- Free standing dinette with four chairs (Std. on 333)
- 8 Cu. Ft. refer (Std. on all models except 252)
- Recliner IPO swivel rocking chairs
- 2ND A/C

The Evolution of SPRINTER

- 100" Wide Body Construction
- Sprinter Emperor Bed on All TT and FW Floorplans (65"x74")
- Larger Bunk Mats (30" & 36" Sizes Only)
- Light-Weight HD Construction
- Wide Stance Axles
- Larger Frames (10" on TT & FW)
- 2" Walls
- 80" Interior Height
- All Norco Cable Slide System
- Max Turn Technology (FW Only)
- Bluetooth Stereo
- Weight Reduction of 500-700 Pounds Per Floorplan
- Increase of 5% Additional Usable Interior Space
- New Front Cap with LED Lights (FW Only)
- 90lb. LP Capacity (FW Only)
- Large 42" Shower w/Seat (FW Only)
- Upgraded Performance Insulation Package on All TT and FW
- Refreshed Graphics Package
- LED Awning Lights
- Awning w/Integrated Speakers
- Class Leading Tank Capacities
- Heated Pass Through (FW Only)
- All New Decors
- New Decor Option with Fabrics by 



↓ Camping Made Easy

With a variety of floorplans ranging from rear living room models, side aisle models, and bunk house models, you can select the Sprinter Copper Canyon Edition that is just right for the way you live.





SPRINTER

by Keystone

CAMPING MADE EASY | WWW.KEYSTONERV.COM/SPRINTER

YOUR LOCAL DEALER IS:



NOVEMBER 2 013



WWW.KEYSTONERV.COM
574.535.2100 • 2642 HACKBERRY DRIVE
P.O. BOX 2000 • GOSHER, IN 46527



Member **RVIA** | Go RVing
RECREATIONAL VEHICLE INDUSTRY ASSOCIATION

DISCLAIMER: Product information is as accurate as possible as of the date of publication of this brochure. All features, floor plans, and specifications in this brochure are subject to change without notice. Please also consult Keystone's web site at www.keystonerv.com for more current product information and specifications. Tow Vehicle Disclaimer: CAUTION: Owners of Keystone recreational vehicles are solely responsible for the selection and proper use of tow vehicles. All customers should consult with a motor vehicle manufacturer or their dealer concerning the purchase and use of suitable tow vehicles for Keystone products. Keystone disclaims any liability or damages suffered as a result of the selection, operation, use or misuse of a tow vehicle. KEYSTONE'S LIMITED WARRANTY DOES NOT COVER DAMAGE TO THE RECREATIONAL VEHICLE OR THE TOW VEHICLE AS A RESULT OF THE SELECTION, OPERATION, USE OR MISUSE OF THE TOW VEHICLE. 11/13

