



250E STS

FOREST RIVER MARINE

FOR A LIFETIME OF ENJOYMENT ON THE WATER.

Founded in 1996, Forest River, Inc. has grown to become one of the largest recreational vehicle manufacturers in the United States.

With two billion dollars in annual sales, Forest River, Inc. is also one of the largest employers in the recreational vehicle industry with approximately 6,500 employees and 70 manufacturing facilities throughout the country.

As a division of Forest River, Inc., a wholly owned subsidiary of Berkshire Hathaway, Forest River Marine offers the financial stability afforded to their customers that no other recreational products company in the industry can. At Forest River we take great pride in building products that continually exceed our customers' expectations. Combining superior construction, quality components and rich comfortable furnishings have made our products the best in the industry.

Forest River Marine will remain committed to continual product improvement as a means to provide the Berkshire owners with a lifetime of enjoyment on the water.

Your Berkshire Dealer:



Learn More
Scan this barcode using
a QR Reader on your
smart phone to learn
more about Forest River.



A Berkshire Hathaway company.

All illustrations and specifications contained in this literature are based on the latest product information at time of publication. Forest River reserves the right to make changes in prices, colors, materials, equipment and specifications at anytime without notice and assumes no responsibility for any error in this literature. All units are shipped F.O.B. MIDDLEBURY, Indiana. CONSULT YOUR LOCAL DEALER FOR WARRANTY INFORMATION.

Berkshire

The very best in life...



FOREST RIVER MARINE
Forest River, Inc., a Berkshire Hathaway company.

USA and Canada
www.berkshirepontoon.com
574.825.8696

Escape the Everyday

Pages 4-5



Pages 6-9



Pages 10-11



Pages 12-15



Pages 16-19



PREMIUM ULTRA SPORT SERIES

PREMIUM ULTRA SERIES

PREMIUM SERIES

STS SERIES

CTS SERIES

BERKSHIRE PONTOONS

BUILT TO A HIGHER STANDARD.

Since introducing the first Berkshire pontoon in 2009, our commitment to producing innovative, high quality boats that deliver satisfying and hassle-free boating pleasure remains the same. Every design element is a careful consideration of comfort, convenience, performance and styling. Berkshire embodies creative pontoon design and a thoughtful detail that shows in every model we build for the ultimate boating experience. You can see it in the styling, feel it in the performance and experience it in the excitement of owning a Berkshire Pontoon.

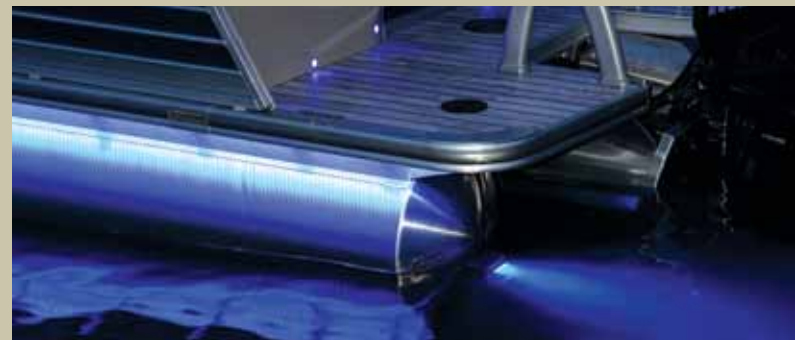
Excellence in Customer Satisfaction

Forest River Marine is proud to receive the Marine Industry CSI Award by the NMMA (National Marine Manufacturers Association) for consecutive years. This award recognizes that we have achieved and maintained an independently measured standard of excellence by building the highest quality products, providing exceptional customer service and the best warranty in the industry.



250 Premium Ultra Sport

(Shown w/ Optional Aluminum Arched Hard Top)



LED UNDERWATER LIGHTING
Optional Underwater Lighting



CONSOLE w/CAPTAIN'S SEAT
Fiberglass Console w/Sink & Raised Mahogany Dash



WALK-THROUGH TRANSOM AREA
Walk-through Transom Area with Under Cushion Hinged Storage Compartment.

View a full set of options, features and more at www.berkshirepontoon.com

Standards

Premium Interior Packages

- » Premium Soft Touch Interior w/Weave & Chilewich Vinyl Wrapped Bases

Console

- » Fiberglass Console w/Raised Royal Mahogany Dash & Steering Wheel
- » Sink w/Pump Faucet & 3 Gallon Fresh Water Tank
- » AM/FM Stereo w/MP3 & iPod Compatibility
- » 4 Speaker Sound System
- » Tachometer/Hourmeter, Voltmeter, Fuel Gauge & Trim Gauge
- » Tilt Cable Steering
- » In Dash Humminbird Grayscale GPS

Comfort

- » Steel Spring Framed High Back Captain's Chair w/Armrests & Seat Slider
- » Premium Carpet
- » Sport Arch w/Manual Release & Bimini Top
- » 12 Volt Receptacle
- » Factory Installed Mooring Cover
- » Extended Stern Swim Platform w/Stainless Steel Boarding Ladder
- » Stern Swim Platform w/Aluminum Underdeck
- » Royal Mahogany Table w/Stainless Steel Table Base

- » Stainless Steel Cupholders
- » Chaise Lounge w/Storage
- » Aluminum Docking Light Pods
- » (2) Deluxe Portable Cupholders
- » Changing Room w/Hoop & Curtain
- » LED Floor Courtesy Lights
- » Wash Down System
- » Fiberglass Stern Loungers w/Ample Storage

Style

- » Rub Rail w/Vinyl Insert
- » Stainless Steel Cleats
- » Stainless Steel Rail Braces
- » Berkshire Integrated Exterior "D" Rail
- » Stern Swim Platform w/LED Lights
- » Filler Back Rest in Stern
- » Filler Seat Cushion in Stern
- » Sport Ski Tow Bar (BP3 Models)

System

- » 27 Gallon Fuel Tank w/Vapor Barrier & Carbon Canister
- » Deutsch Electrical Connections
- » Fire Extinguisher
- » Fuel/Water Separator
- » Stainless Steel Stern Mounted Fuel Fill
- » .090 Aluminum Tube Thickness

Popular Options

- » Seastar Hydraulic Steering
- » Sirius Satellite Receiver
- » Amplifier, Remote & Subwoofer
- » Full Vinyl Floor
- » Snap-In Berber Carpet (Vinyl Floor must be Optioned In)
- » Full Teak Vinyl Floor
- » Full Tropical Weave
- » In-Floor Storage (BP3 Models)
- » Stainless Steel Ski Tow (Bi-Toons)
- » Double Wide Captain's Chair
- » LED Underdeck Lighting
- » LED Exterior Rail Lights
- » LED Underdeck Lighting
- » Electric Power Arch
- » Aluminum Arch Hard Top
- » Wake Board Racks
- » Power Assist Steering Pump*

Additional Optional Features Packages

BP3 Package

- » Full Center Tube
- » Lifting Strakes
- » Aluminum Underdeck Performance Skin
- » 52 Gallon Fuel Tank
- » Sport Ski Tow Bar
- » Seastar Hydraulic Steering

BP2 Performance Package

- » Aluminum Underdeck
- » Lifting Strakes
- » Seastar Hydraulic Steering

BP1 Option Package

- » Center Tube
- » Aluminum Underdeck
- » (2) Lifting Strakes

Saltwater Package

- » Zinc Anode Bracket
- » Solid Keel

* (150 H.P. and Above Power Assist Steering Pump is Recommended)

250E Premium Ultra



Standards

Premium Interior Packages

- » Premium Soft Touch Interior w/Weave & Chilewich Vinyl Wrapped Bases

Console

- » Fiberglass Console w/Raised Royal Mahogany Dash & Steering Wheel
- » Sink w/Pump Faucet & 3 Gallon Fresh Water Tank
- » AM/FM Stereo w/MP3 & iPod Compatibility
- » 4 Speaker Sound System
- » Tachometer/Hourmeter, Voltmeter, Fuel Gauge & Trim Gauge
- » Tilt Cable Steering
- » In Dash Humminbird Grayscale GPS

Comfort

- » Steel Spring Framed High Back Captain's Chair w/Armrests & Seat Slider
- » Premium Carpet
- » 10' Bimini Top w/Stainless Steel Quick Release
- » 12 Volt Receptacle
- » Factory Installed Mooring Cover
- » Extended Stern Swim Platform w/Stainless Steel Boarding Ladder
- » Stern Swim Platform w/Aluminum Underdeck
- » Royal Mahogany Table w/Stainless Steel Table Base
- » Stainless Steel Cupholders
- » Chaise Lounge w/Storage
- » Aluminum Docking Light Pods
- » (2) Deluxe Portable Cupholders

- » Changing Room w/Hoop & Curtain
- » LED Floor Courtesy Lights

Style

- » Rub Rail w/Vinyl Insert
- » Exterior "D" Rail w/Full Color Panel Skin
- » Stainless Steel Cleats
- » Stainless Steel Rail Braces

System

- » 27 Gallon Fuel Tank w/Vapor Barrier & Carbon Canister
- » Deutsch Electrical Connections
- » Fire Extinguisher
- » Fuel/Water Separator
- » Stainless Steel Stern Mounted Fuel Fill
- » Bimini Top Trailing Brackets
- » .090 Aluminum Tube Thickness

Entertainment Model Standard Features

- » Granite Topcoat Entertainment Bar w/LED Lighting
- » Stainless Steel 1.7 Cu. Ft. 12 Volt Refrigerator
- » Stainless Steel Propane Grill
- » Stainless Steel Cooler Storage
- » Stainless Steel 3 Drawer Storage System
- » Rear Entertainment Speakers

Additional Standard Features

- » Stainless Steel Ski Tow Bar (RFX & SLX Models Only)



GRANITE TOPCOAT ENTERTAINMENT BAR
Entertainment Bar with Storage, Wine Rack, 4 Bar Stools and LED Lighting.



STAINLESS STEEL PROPANE GRILL
Granite Topcoat Countertop with Stainless Steel Grill.



REAR ENTERTAINMENT
Stern Entertainment Center w/Stainless Steel Draws & Refrigerator

View a full set of options, features and more at www.berkshirepontoon.com



RAISED MAHOGANY DASH w/HUMMINBIRD GPS & SINK



IN-FLOOR STORAGE

Popular Options

- » Seastar Hydraulic Steering
- » Dual Battery Switch
- » Sirius Satellite Receiver
- » Amplifier, Remote & Subwoofer
- » Stainless Steel Ski Tow Bar
- » Full Vinyl Floor
- » Snap-In Berber Carpet (Vinyl Floor must be Optioned In)
- » Full Teak Vinyl Floor
- » Full Tropical Weave
- » Livewell Seat Insert
- » In-Floor Storage (BP3 Models)
- » Double Bimini Top
- » Half Camper Enclosure
- » Full Camper Enclosure
- » High Back Captain's Chair
- » Double Wide Captain's Chair
- » 24" Removable Bow Bench
- » Upper Deck w/Slide (270CL BP3 Only)
- » LED Underdeck Lighting
- » LED Exterior Rail Lights
- » LED Underdeck Lighting
- » Power Assist Steering Pump

**(150 H.P. and Above Power Assist Steering Pump is Recommended)*

Additional Optional Features Packages BP3 Package

- » Full Center Tube
- » Lifting Strakes
- » Aluminum Underdeck Performance Skin
- » 52 Gallon Fuel Tank
- » Stainless Steel Ski Tow Bar
- » Seastar Hydraulic Steering

BP2 Performance Package

- » Aluminum Underdeck
- » Lifting Strakes
- » Seastar Hydraulic Steering

BP1 Option Package

- » Center Tube
- » Aluminum Underdeck
- » (2) Lifting Strakes

Saltwater Package

- » Zinc Anode Bracket
- » Solid Keel



TEAK VINYL FLOOR w/SNAP-IN CARPET

253SLX Premium Ultra



Premium Ultra

230CL Premium



PORTABLE CUP HOLDERS

PRIVACY HOOP & CURTAIN
IN CHAISE LOUNGEFIBERGLASS CONSOLE SHOWN WITH OPTIONAL
DOUBLE WIDE HELM SEAT

Popular Options

- » Seastar Hydraulic Steering
- » Dual Battery Switch
- » LED Courtesy Floor Lights
- » Humminbird Fish/Depth Sounder
- » Humminbird Grayscale GPS
- » Sirius Satellite Receiver
- » Amplifier, Remote & Subwoofer
- » Stainless Steel Ski Tow Bar
- » Full Vinyl Floor
- » Snap-In Berber Carpet (Vinyl Floor must be Optioned In)
- » Full Teak Vinyl Floor
- » Full Tropical Weave
- » Premium Carpet Upgrade
- » Livewell Seat Insert
- » In-Floor Storage (BP3 Models)
- » Double Bimini Top
- » Half Camper Enclosure
- » Full Camper Enclosure
- » High Back Captain's Chair
- » Double Wide Captain's Chair
- » 24" Removable Bow Bench
- » (2) Deluxe Portable Upholders
- » Upper Deck w/Slide (270CL BP3 Model Only)
- » LED Exterior Rail Lights
- » LED Under deck Lighting
- » Power Assist Steering Pump*

* (150 H.P. and Above Power Assist
Steering Pump is Recommended)

Standards

Premium Interior Packages

- » Premium Soft Touch Interior w/Weave Vinyl Wrapped Bases

Console

- » Fiberglass Console w/Raised Royal Mahogany Dash & Steering Wheel
- » Sink w/Pump Faucet & 3 Gallon Fresh Water Tank
- » AM/FM Stereo w/MP3 & iPod Compatibility
- » 4 Speaker Sound System
- » Tachometer/Hourmeter, Voltmeter, Fuel Gauge & Trim Gauge
- » Tilt Cable Steering

Comfort

- » Steel Spring Framed Low Back Captain's Chair w/Armrests & Seat Slider
- » Berber Carpet
- » 10' Bimini Top w/Stainless Steel Quick Release
- » 12 Volt Receptacle
- » Factory Installed Mooring Cover
- » Extended Stern Swim Platform w/Stainless Steel Boarding Ladder
- » Stern Swim Platform w/Aluminum Underdeck
- » Royal Mahogany Table w/Stainless Steel Table Base
- » Chaise Lounge w/Storage
- » Recessed Docking Lights
- » Stainless Steel Rimmed Cupholders
- » (2) Portable Cupholders
- » Changing Room w/Hoop & Curtain

Style

- » Rub Rail w/Vinyl Insert
- » Exterior "D" Rail w/Full Color Panel Skin
- » Stainless Steel Cleats
- » Stainless Steel Rail Braces

System

- » 27 Gallon Fuel Tank w/Vapor Barrier & Carbon Canister
- » Deutsch Electrical Connections
- » Fire Extinguisher
- » Fuel/Water Separator
- » Stern Mounted Fuel Fill
- » Bimini Top Trailing Brackets
- » .090 Aluminum Tube Thickness

Entertainment Model Standard Features

- » Granite Topcoat Entertainment Bar w/LED Lighting
- » Stainless Steel 1.7 Cuff. 12 Volt Refrigerator
- » Stainless Steel Propane Grill
- » Stainless Steel Cooler Storage
- » Stainless Steel 3 Drawer Storage System
- » Rear Entertainment Speakers

Additional Standard Features

- » Stainless Steel Ski Tow Bar (RFX & SLX Models Only)

Additional Optional Features Packages

BP3 Package

- » Full Center Tube
- » Lifting Strakes
- » Aluminum Under deck Performance Skin
- » 52 Gallon Fuel Tank
- » Stainless Steel Ski Tow Bar
- » Sea star Hydraulic Steering

BP2 Performance Package

- » Aluminum Under deck
- » Lifting Strakes
- » Sea star Hydraulic Steering

BP1 Option Package

- » Center Tube
- » Aluminum Under deck
- » (2) Lifting Strakes

Saltwater Package

- » Solid Keel
- » Zinc Anode Bracket

View a full set of options, features and more at www.berkshirepontoon.com

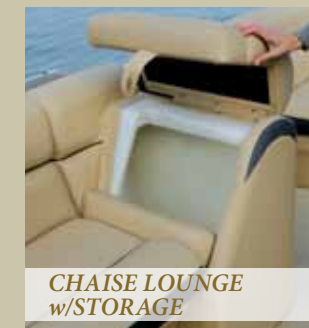
231RFC STS



FIBERGLASS CONSOLE



STAINLESS STEEL BIMINI
QUICK RELEASE



CHAISE LOUNGE
w/STORAGE



STARBOARD FISHING CENTER w/AERATED LIVEWELL

Standards

Console

- » Fiberglass Console w/Raised Royal Mahogany Dash, Radio & Toggle Switch Panels
- » AM/FM Stereo w/MP3 & iPod Compatibility
- » 4 Speaker Sound System
- » Tachometer/Hourmeter, Voltmeter, Fuel Gauge & Trim Gauge
- » Tilt Cable Steering

Comfort

- » Soft Touch Interior w/Vinyl Wrapped Seat Bases
- » Steel Spring Framed Low Back Captain's Chair w/Armrests & Seat Slider
- » Berber Carpet
- » 10' Bimini Top w/Stainless Steel Quick Release
- » 12 Volt Receptacle
- » Factory Installed Mooring Cover
- » Extended Stern Swim Platform w/Stainless Steel Boarding Ladder
- » Stern Swim Platform w/Aluminum Underdeck
- » Stainless Steel Rimmed Cupholders

- » Royal Mahogany Table w/Stainless Steel Table Base
- » Chaise Lounge w/Storage
- » Recessed Docking Lights
- » Starboard Top Fishing Center w/Livewell & Rod Holders (212A, 211RFC, 232A, 231RFC & 251RFC Models)
- » Changing Room w/Hoop & Curtain (232A, 231RFC & 251RFC)

Style

- » Rub Rail w/Vinyl Insert
- » Exterior "D" Rail w/Full Color Panel Skin
- » Stainless Steel Cleats
- » Stainless Steel Rail Braces

System

- » 27 Gallon Fuel Tank w/Vapor Barrier & Carbon Canister
- » Deutsch Electrical Connections
- » Fire Extinguisher
- » Fuel/Water Separator
- » Stern Mounted Fuel Fill
- » Bimini Top Trailering Brackets

Popular Options

- » Seastar Hydraulic Steering
- » Changing Room Hoop & Curtain
- » Dual Battery Switch
- » LED Courtesy Floor Lights
- » Humminbird Fish/Depth Sounder
- » Humminbird Grayscale GPS
- » Stainless Steel Ski Tow Bar
- » Full Teak Vinyl Floor
- » Full Vinyl Floor
- » Snap In Berber Carpet (Vinyl Floor must be Optioned In)
- » Full Tropical Weave
- » Premium Carpet Upgrade
- » Trolling Motor Outlet & Half Gate
- » Livewell Seat Insert
- » In-Floor Storage (BP3 Models)
- » Double Bimini Top
- » Half Camper Enclosure
- » Full Camper Enclosure
- » Woodgrain Steering Wheel
- » High Back Captain's Chair
- » Double Wide Captain's Chair
- » Centric Fishing Seats
- » Low Back Captain's Chairs IPO Fishing Chairs (FC Models)
- » Power Assist Steering Pump*

Additional Optional Features Packages

BP3 Package

- » Full Center Tube
- » Lifting Strakes
- » Aluminum Underdeck Performance Skin
- » 52 Gallon Fuel Tank
- » Stainless Steel Ski Tow Bar
- » Seastar Hydraulic Steering

BP2 Performance Package

- » Aluminum Underdeck
- » Lifting Strakes
- » Seastar Hydraulic Steering

BP1 Option Package

- » Center Tube
- » Aluminum Underdeck
- » (2) Lifting Strakes

Saltwater Package

- » Zinc Anode Bracket
- » Solid Keel

* (150 H.P. and Above Power Assist Steering Pump is Recommended)

View a full set of options, features and more at www.berkshirepontoon.com

Standards

Console

- » Fiberglass Console w/Raised Royal Mahogany Dash, Radio & Toggle Switch Panels
- » AM/FM Stereo w/MP3 & iPod Compatibility
- » 4 Speaker Sound System
- » Tachometer/Hourmeter, Voltmeter, Fuel Gauge & Trim Gauge
- » Tilt Cable Steering

Comfort

- » Soft Touch Interior w/Vinyl Wrapped Seat Bases
- » Steel Spring Framed Low Back Captain's Chair w/Armrests & Seat Slider
- » Berber Carpet
- » 10' Bimini Top w/Stainless Steel Quick Release
- » 12 Volt Receptacle
- » Factory Installed Mooring Cover
- » Extended Stern Swim Platform w/Stainless Steel Boarding Ladder
- » Stern Swim Platform w/Aluminum Underdeck
- » Royal Mahogany Table w/Stainless Steel Table Base
- » Stainless Steel Rimmed Cupholders
- » Chaise Lounge with Storage
- » Recessed Docking Lights

Style

- » Rub Rail w/Vinyl Insert
- » Exterior "D" Rail w/Full Color Panel Skin
- » Stainless Steel Cleats
- » Stainless Steel Rail Braces

System

- » 27 Gallon Fuel Tank w/Vapor Barrier & Carbon Canister
- » Deutsch Electrical Connections
- » Fire Extinguisher
- » Fuel/Water Separator
- » Stern Mounted Fuel Fill
- » Bimini Top Trailing Brackets

Entertainment Series Features

- » Granite Top Coat Entertainment Center
- » (4) Bar Stools (250E Model Only)
- » (2) Bar Stools (230E Model Only)
- » Stern Entertainment Center w/LED Lights

Additional Standard Features

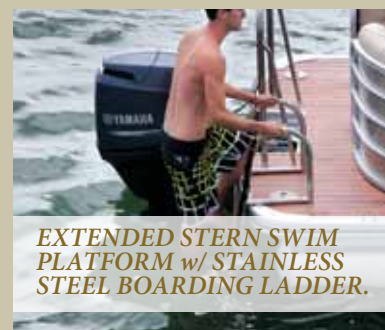
- » Stainless Steel Ski Tow Bar (RFX, SLX & E Models Only)



ENTERTAINMENT CENTER
Granite Top Coat Entertainment Center w/Bar Stools. (250E)



OPTIONAL LED FLOOR LIGHTS
Blue LED Courtesy Floor Lighting.



EXTENDED STERN SWIM PLATFORM w/ STAINLESS STEEL BOARDING LADDER.

Popular Options

- » Seastar Hydraulic Steering
- » Changing Room Hoop & Curtain
- » Dual Battery Switch
- » Aluminum Docking Light Pods
- » LED Courtesy Floor Lights
- » Humminbird Fish/Depth Sounder
- » Humminbird Grayscale GPS
- » Sirius Satellite Receiver
- » Amplifier, Remote & Subwoofer
- » Stainless Steel Ski Tow Bar
- » Full Vinyl Floor
- » Snap-In Berber Carpet (Vinyl Floor must be Optioned In)
- » Full Teak Vinyl Floor
- » Full Tropical Weave
- » Premium Carpet Upgrade
- » Livewell Seat Insert
- » In-Floor Storage (BP3 Models)
- » Double Bimini Top
- » Half Camper Enclosure

- » Full Camper Enclosure
- » Woodgrain Steering Wheel
- » High Back Captain's Chair
- » Double Wide Captain's Chair
- » 24" Removable Bow Bench
- » (2) Additional Bar Stools (230E Model)
- » LED Underdeck Lighting
- » Power Assist Steering Pump*

**(150 H.P. and Above Power Assist Steering Pump is Recommended)*

Additional Optional Features Packages

BP3 Package

- » Full Center Tube
- » Lifting Strakes
- » Aluminum Underdeck Performance Skin
- » 52 Gallon Fuel Tank
- » Stainless Steel Ski Tow Bar
- » Seastar Hydraulic Steering

BP2 Performance Package

- » Aluminum Underdeck
- » Lifting Strakes
- » Seastar Hydraulic Steering

BP1 Option Package

- » Center Tube
- » Aluminum Underdeck
- » (2) Lifting Strakes

Saltwater Package

- » Zinc Anode Bracket
- » Solid Keel



STERN ENTERTAINMENT WET BAR

250CL STS



233RFX STS

STS (cruising)

View a full set of options, features and more at www.berkshirepontoon.com

210CL CTS



FIBERGLASS CONSOLE w/CAPTAIN CHAIR & SLIDER



4 SPEAKER SOUND SYSTEM



PRIVACY HOOP & CURTAIN



Standards

Console

- » Fiberglass Console w/Raised Royal Mahogany Dash
- » AM/FM Stereo w/MP3 & iPod Compatibility
- » 4 Speaker Sound System
- » Tachometer/Hourmeter, Voltmeter, Fuel Gauge & Trim Gauge
- » Soft Grip Steering Wheel

Comfort

- » Soft Touch Interior w/Vinyl Wrapped Seat Bases
- » Steel Spring Framed Low Back Captain's Chair w/Armrests & Seat Slider
- » Berber Carpet
- » 10' Bimini Top w/Stainless Steel Quick Release
- » 12 Volt Receptacle
- » Factory Installed Mooring Cover
- » Extended Stern Swim Platform w/Stainless Steel Boarding Ladder
- » Table w/Stainless Steel Table Base

- » Stern Swim Platform w/Aluminum Underdeck
- » Stainless Steel Rimmed Cupholders
- » Chaise Lounge w/Storage
- » Fishing Entertainment Center (RFC & A Models Only)
- » Changing Room w/Hoop & Curtain (231RFC Model Only)

Style

- » Contoured Radius Fence Panel
- » Color Coordinated Full Fence Panel
- » Stainless Steel Cleats
- » Exterior "D" Rails

Systems

- » 27 Gallon Fuel Tank w/Vapor Barrier & Carbon Canister
- » Deutsch Electrical Connections
- » Fire Extinguisher
- » Fuel/Water Separator
- » Stern Mounted Fuel Fill
- » Bimini Top Trailing Brackets

TABLE

Standard Table w/Stainless Steel Base.





STANDARD FISHING SEAT
(RFC & A Models Only)

Popular Options

- » 25" Tube Upgrade
- » Changing Room Privacy Hoop & Curtain
- » Docking Lights
- » Stainless Steel Ski Tow Bar
- » Humminbird Fish/Depth Sounder
- » Full Vinyl Floor Upgrade
- » Full Tropical Weave Upgrade
- » Trolling Motor Outlet & Half Gate

Additional Optional Packages

BP1 Optional Package

- » Center Tube
- » Aluminum Underdeck
- » (2) Lifting Strakes

Saltwater Package

- » Zinc Anode Bracket
- » Solid Keel



**GIMBLE MOUNTED HUMMINBIRD
FISH/DEPTH SOUNDER**



STANDARD FISHING ENTERTAINMENT CENTER
Fishing Entertainment Center (RFC & A Models Only)

211RFC CTS



5-Year Bow to Stern Limited Warranty
Limited Lifetime Structural Warranty
Limited Lifetime Deck Component Warranty

- ① **Forest River Marine Exclusive Air Pressurized Pontoon**s Increases strength and provides rigidity to allow longevity in extreme water conditions.
- ② **Performance Skin** Full length performance skin that is roll formed to manage water flow and air flow. This provides maximum performance for a cleaner, more efficient ride.
- ③ **Lifting Strakes** Increase the ability for quicker planing, better maneuverability and a smoother ride.
- ④ **Nose Cones** Industry standard has a 48" nose cone. We have engineered a longer 52" nose cone to enhance the speed, reduce the fuel consumption and provide a more comfortable ride.
- ⑤ **Bulk Head** Strategically placed bulkheads at vital points in the pontoon to provide superior structural integrity.

PERFORMANCE

FASTER, MORE COMFORTABLE RIDE.

At Berkshire we understand that the importance of the overall performance and ride of your pontoon comes first. Berkshire has engineered a longer nose cone to enhance the speed of your pontoon, reduce the fuel consumption and provide you with a more comfortable ride. Our lifting strakes are placed on the inside of the outer tubes which allows for quicker planing, better maneuverability and a tighter turning radius. Berkshire's roll formed aluminum underdeck performance skin manages water and air flow providing unparalleled performance and agility. Berkshire's BP1, BP2 and BP3 Packages guarantees family fun - skiing, tubing, wakeboarding - there are no limits!

Berkshire Performance 1 Package

Berkshire's BP1 Package includes: A modified center tube, full aluminum underskin and (2) lifting strakes on the inside of the outer tubes. Add hydraulic steering for engines over 115HP and this package offers increased performance, fuel efficiency, stability and ride comfort in rougher water. The BP1 Package is designed for customers who want some of the features of a triple tube pontoon boat in an economical package.

Berkshire Performance 2 Package

Choose the BP2 Package for a full aluminum underskin, lifting strakes and hydraulic steering. This package offers moderately increased performance, fuel efficiency, easier steering and watersports activity enjoyment. This package is designed for anyone looking for more performance in a 2-tube pontoon boat.

Berkshire Performance 3 Package

Choose the BP3 Package for a full aluminum underskin, full center tube with integrated motor pod and larger (in tube) fuel tank, lifting strakes on all 3 pontoons, hydraulic steering (*150 H.P. and Above Power Assist Steering Pump is Recommended*) and heavy duty ski tow bar. This package offers the ultimate in a performance pontoon, Increased horse power, speed, handling, fuel efficiency and overall performance. This package is designed for customers who want to get to their destination faster, with ease and for those looking to enjoy all types of watersports.



Structural full length continuous riser



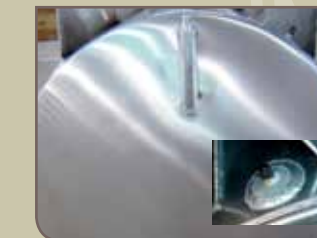
Bimini top frame w/trailer brackets



High quality aluminum alloy, material & welds



'Deutsch' waterproof electrical wiring/harness(s)



Air pressurized chambered tube construction, strengthens inner walls of pontoons. NO LEAKS!



Full exterior rail panels (On All Models)



GPS more accurate than traditional Speedometers.



Fiberglass Console

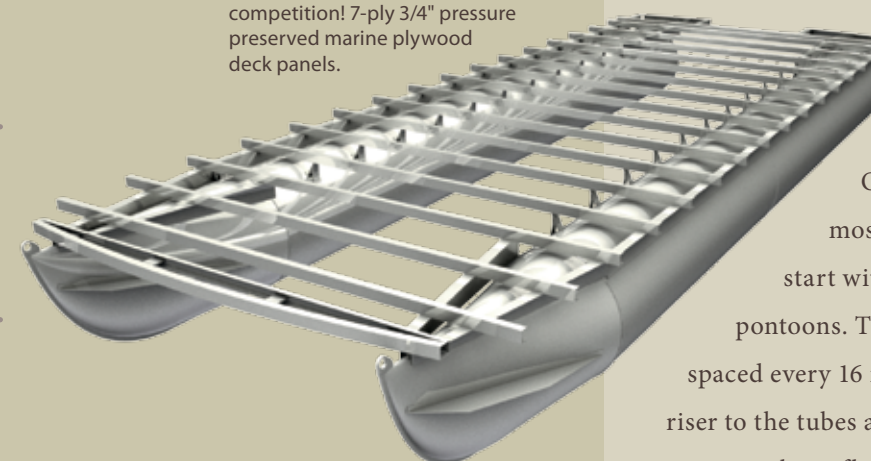


Soft Touch Furniture seating w/high performance seat foam offers Durability, greater long lasting comfort and ample storage.



Nose cone w/protective keel. Industry standard has 48" nose cone. Berkshire has engineered a longer 52" nose cone to enhance speed, reduce gas consumption & provide a more comfortable ride.

16" on center cross member spacing. More cross members and stainless steel deck fasteners than the competition! 7-ply 3/4" pressure preserved marine plywood deck panels.



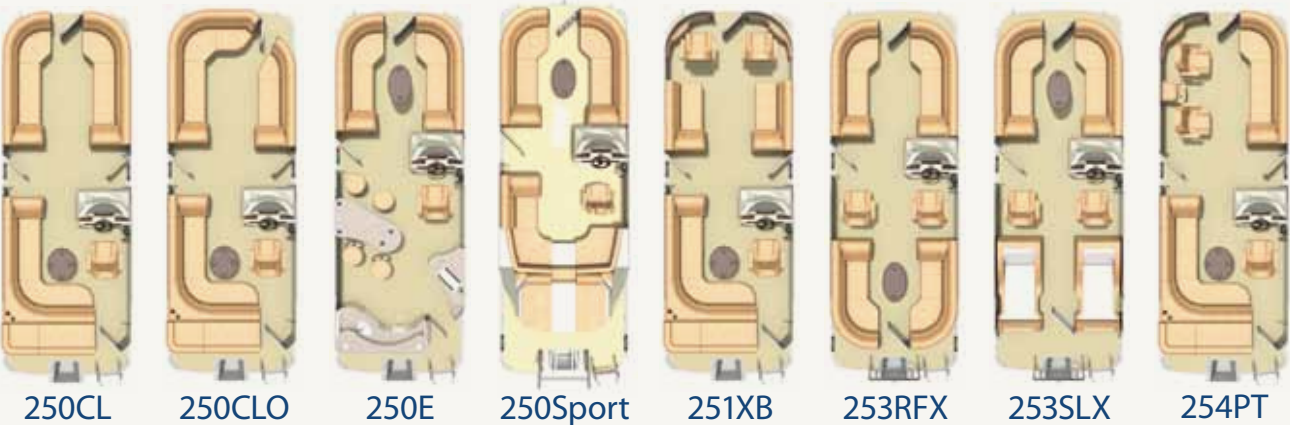
CONSTRUCTION

SUPERIOR STRENGTH AND QUALITY.

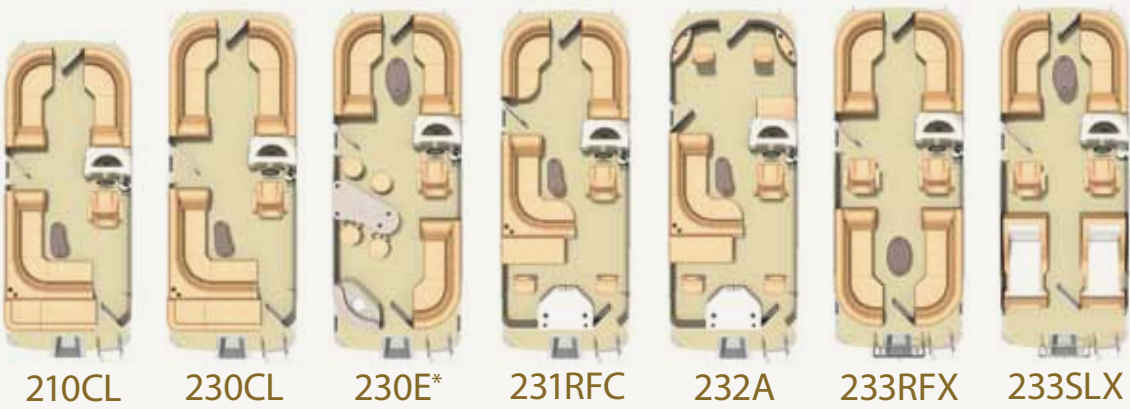
On the water you expect quality and reliability in your boat and your equipment. As builders of the most luxurious pontoons we feel a duty to construct a product that is built to last and build right. We start with our air pressurized and chambered tube construction that strengthens the inner walls of our pontoons. The Berkshire chassis is constructed using extruded C-channel and box channel cross members spaced every 16 inches, providing a more stable and rigid platform. At Berkshire we also weld a full length structural riser to the tubes and floor supports. The 7-ply 3/4" pressure preserved marine plywood deck panels are attached to the crossmembers, floor supports and risers using stainless steel fasteners. This design creates superior strength.

Popular Berkshire Floorplans

Premium Series (Including Ultra and Sport)



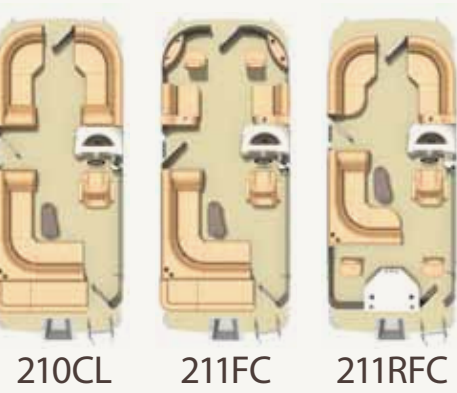
STS Series



*230E shown with Optional 2 Additional Bar Stools. **Select 17' and 19' Models Available.

View our full lineup of Berkshire pontoon floorplans www.berkshirepontoon.com

CTS Series**



Premium Series (Including Ultra and Sport)

| | Tube Diameter | Deck Length | Tube Length | Overall Length | Dry Weight (Approx.) | Capacity (w/ or Passengers) | Capacity (Passengers weight) | Persons, Motor & Gear | Maximum H.P. |
|----------------|---------------|-------------|-------------|----------------|----------------------|-----------------------------|------------------------------|-----------------------|--------------|
| 250CL | 25" | 24' 6" | 23' 11" | 25' 2" | 2625 | 12 | 1730 | 2375 | 150 |
| 250CL - BP3 | 25" | 25' 1" | 23' 11" | 25' 7" | 2880 | 15 | 2090 | 2850 | 300 |
| 250CLO | 25" | 24' 6" | 23' 11" | 25' 2" | 2625 | 12 | 1730 | 2375 | 150 |
| 250CLO - BP3 | 25" | 25' 1" | 23' 11" | 25' 7" | 2880 | 15 | 2090 | 2850 | 300 |
| 250E | 25" | 24' 6" | 23' 11" | 25' 2" | 2900 | 12 | 1625 | 2270 | 150 |
| 250E - BP3 | 25" | 25' 1" | 23' 11" | 25' 7" | 3100 | 14 | 2030 | 2790 | 300 |
| 250SPORT | 25" | 24' 6" | 23' 11" | 25' 2" | 2900 | 12 | 1625 | 2270 | 150 |
| 250SPORT - BP3 | 25" | 25' 1" | 23' 11" | 25' 7" | 3150 | 14 | 1985 | 2745 | 300 |
| 251XB | 25" | 24' 6" | 23' 11" | 25' 2" | 2625 | 12 | 1730 | 2375 | 150 |
| 251XB - BP3 | 25" | 25' 1" | 23' 11" | 25' 7" | 2880 | 15 | 2090 | 2850 | 300 |
| 253RFX - BP3 | 25" | 25' 1" | 23' 11" | 25' 7" | 2970 | 15 | 2065 | 2825 | 300 |
| 253SLX | 25" | 24' 6" | 23' 11" | 25' 2" | 2670 | 12 | 1715 | 2360 | 150 |
| 253SLX - BP3 | 25" | 25' 1" | 23' 11" | 25' 7" | 2830 | 15 | 2105 | 2865 | 300 |
| 254PT | 25" | 24' 6" | 23' 11" | 25' 2" | 2625 | 12 | 1730 | 2378 | 150 |
| 254PT - BP3 | 25" | 25' 1" | 23' 11" | 25' 7" | 2880 | 15 | 2090 | 2850 | 300 |

STS Series

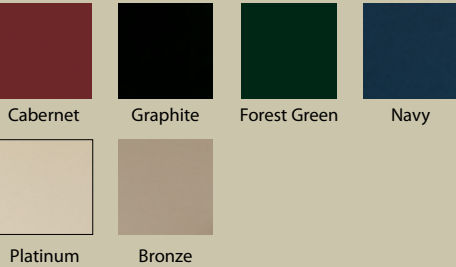
| | | | | | | | | | |
|--------------|-----|--------|--------|--------|------|----|------|------|-----|
| 210CL | 25" | 21' 4" | 20' 9" | 22' | 2060 | 10 | 1440 | 2080 | 115 |
| 210CL - BP3 | 25" | 21' 4" | 20' 9" | 22' | 2300 | 13 | 1810 | 2455 | 200 |
| 230CL | 25" | 23' 1" | 22' 6" | 23' 9" | 2230 | 12 | 1650 | 2295 | 150 |
| 230CL - BP3 | 25" | 23' 8" | 22' 6" | 24' 2" | 2700 | 13 | 1890 | 2650 | 300 |
| 230E | 25" | 23' 1" | 22' 6" | 23' 9" | 2225 | 12 | 1655 | 2300 | 150 |
| 231RFC | 25" | 23' 1" | 22' 6" | 23' 9" | 2600 | 10 | 1455 | 2100 | 150 |
| 231RFC - BP3 | 25" | 23' 7" | 22' 6" | 24' | 2950 | 12 | 1750 | 2510 | 300 |
| 232A | 25" | 23' 1" | 22' 6" | 23' 7" | 2215 | 11 | 1515 | 2160 | 150 |
| 233RFX | 25" | 23' 1" | 22' 6" | 23' 9" | 2175 | 12 | 1660 | 2305 | 150 |
| 233RFX - BP3 | 25" | 23' 7" | 22' 6" | 24' | 2510 | 14 | 1945 | 2705 | 300 |
| 233SLX | 25" | 23' 1" | 22' 6" | 23' 9" | 2200 | 12 | 1665 | 2310 | 150 |
| 233SLX - BP3 | 25" | 23' 7" | 22' 6" | 24" | 2600 | 14 | 1915 | 2675 | 300 |

CTS Series

| | | | | | | | | | |
|------------|-----|--------|--------|-----|------|----|------|------|-----|
| 210CL | 23" | 21' 4" | 20' 9" | 22' | 1900 | 10 | 1395 | 1900 | 90 |
| 210CL - A | 25" | 21' 4" | 20' 9" | 22' | 2060 | 10 | 1440 | 2080 | 115 |
| 211FC | 23" | 21' 4" | 20' 9" | 22' | 1925 | 9 | 1330 | 1830 | 90 |
| 211FC - A | 25" | 21' 4" | 20' 9" | 22' | 1950 | 10 | 1450 | 2090 | 115 |
| 211RFC | 23" | 21' 4" | 20' 9" | 22' | 2050 | 9 | 1275 | 1780 | 90 |
| 211RFC - A | 25" | 21' 4" | 20' 9" | 22' | 2075 | 10 | 1415 | 2055 | 115 |

* All Pontoon Decks are 8'6" Wide. BP1 Package available on 21' models & above. With BP1 Package HP ratings go from 115HP to 150HP.

EXTERIOR PANEL COLORS



ACCENT VINYL COLORS



BASE SOFT TOUCH VINYL COLORS



FLOORING COLORS

