

AMPED



EVERGREEN
RECREATIONAL VEHICLES

2014 TOY HAULERS

A SPARK OF GENIUS:



Conventional toy hauler travel trailer storage is only under the bed.

Only two small access doors to one pass through storage area



Z-Frame Technology creates furnace, utility and generator compartments freeing up the living area.



Massive Amped pass through trunk and basement storage with large access doors

The bedroom is a step up providing more privacy and separate gas-strut assisted storage under the bed. Dead air under the bedroom improves insulation.

Amped Z Frame Technology. The Storage of a Fifth-wheel in a Travel Trailer

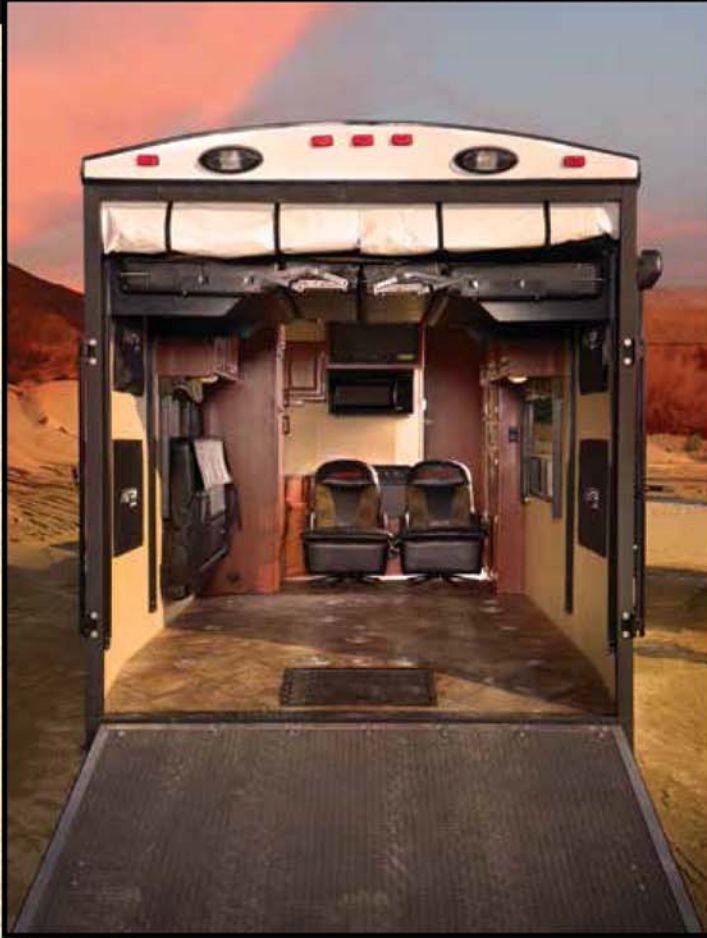
Amped boasts more storage than any toy hauler in its class. Amped, Z-Frame Technology opens up loads of pass-through basement storage that can only be compared to fifth-wheel toy haulers. The Amped Z-Frame creates a step-up bedroom for more privacy while maintaining additional storage under the bed. More storage space means more camping gear. Equipment "stows and goes" in an Amped toy hauler from EverGreen.



ComposiTek™ Interior Walls Dial-up the Durability

An EverGreen industry innovation, Amped toy hauler interior walls are built with a tough Composite Inner Shell, vacuum laminated to a DuraLite Double Welded Aluminum Structure sidewall and finished in a tough, high-gloss exterior gel-coat. Composites in the interior walls resist moisture, rot and mildew and are also formaldehyde free—far superior to conventional wood walls. In addition, vacuum lamination and one-piece composite walls are stiffer and more durable to resist flexing—extending the life of your Amped trailer.

REINVENTING THE TOY HAULER.



Load Amped to the Max—No Interior Wheel Wells In the Way!

The Amped Z Frame Technology results in the floor system set over the axles eliminating cumbersome wheel wells inside the payload area. This allows more room side-to-side for easier loading and unloading. D-ring tie-downs are bolted to the frame in all Amped toy haulers.

Setting the frame over the axles also provides higher ground clearance off road. The standard Trail Air suspension features the Equa-Flex™ system for added stability.

The Amped is Ramped with Standard Beavertail.

The standard beavertail on all Amped trailers makes loading and off-loading easier. A built-in toolbox is flush to the floor on all models. The entire floor of the Amped toy hauler is engineered of marine-grade plywood decking.

BUILT STRONG TO LAST LONG!

CONSTRUCTION

8" I-beam Z Frame Technology Chassis
Vacuum Laminated Walls w/Composite Inner Liner
Vacuum Laminated Floors w/Beauflor® Covering
No Wheel Wells Inside
Higher Ground Clearance

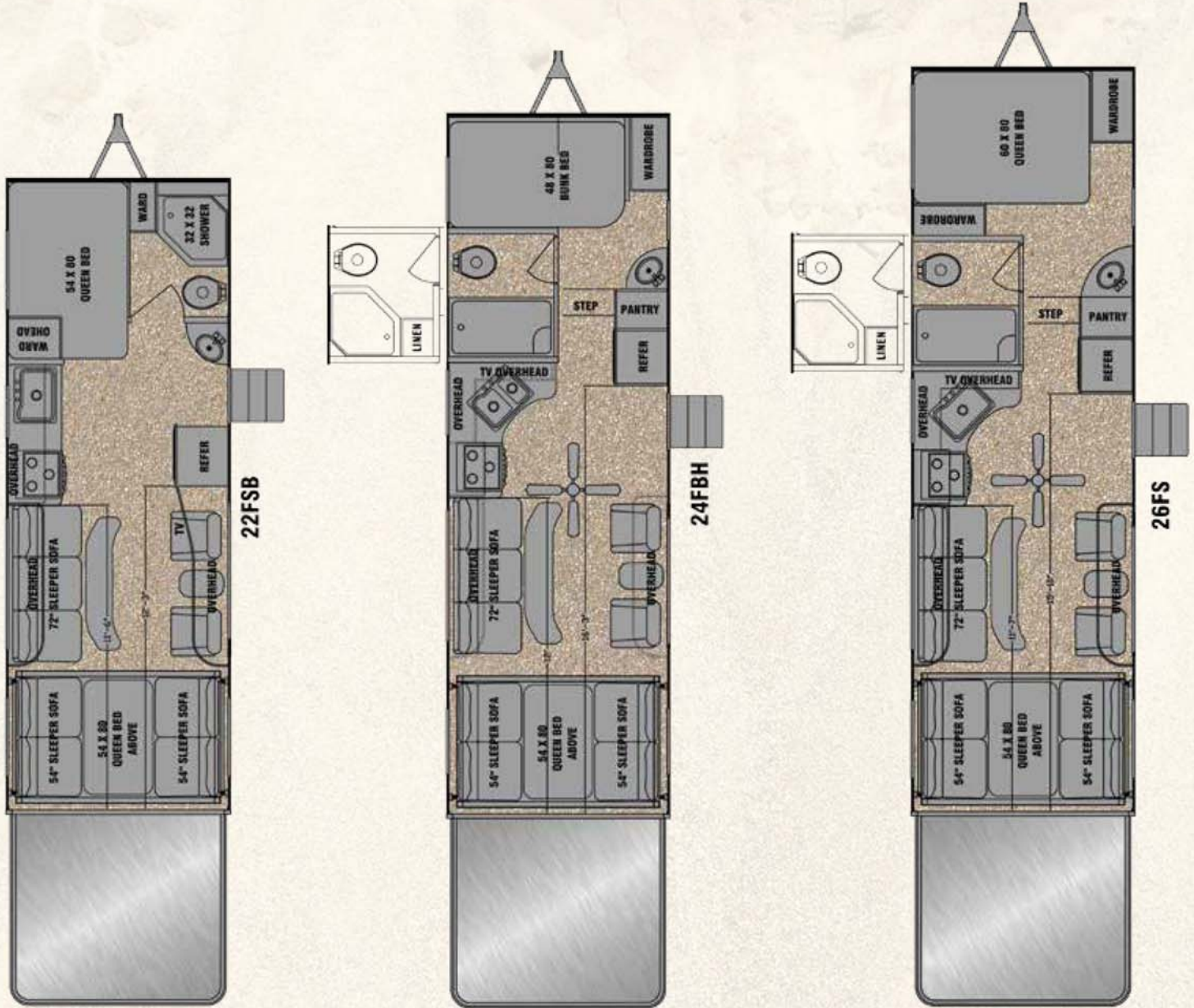
Trail Air, Equa-Flex™ Suspension System
DuraLite Double Welded Aluminum Structure in Walls
Standard Beaver Tail with Flush Mount Toolbox
5,000 lb. D-ring Tie-downs Mounted to Frame
Ultra Lube Hubs 6,000 lb. Axles

101" Interior Height
8-foot Ramp Door Height
Massive Pass Through Storage
Built to Canadian CSA Standards



*Some construction materials are subject to market availability and may change without notice.

2014 FLOORPLANS



22FSB

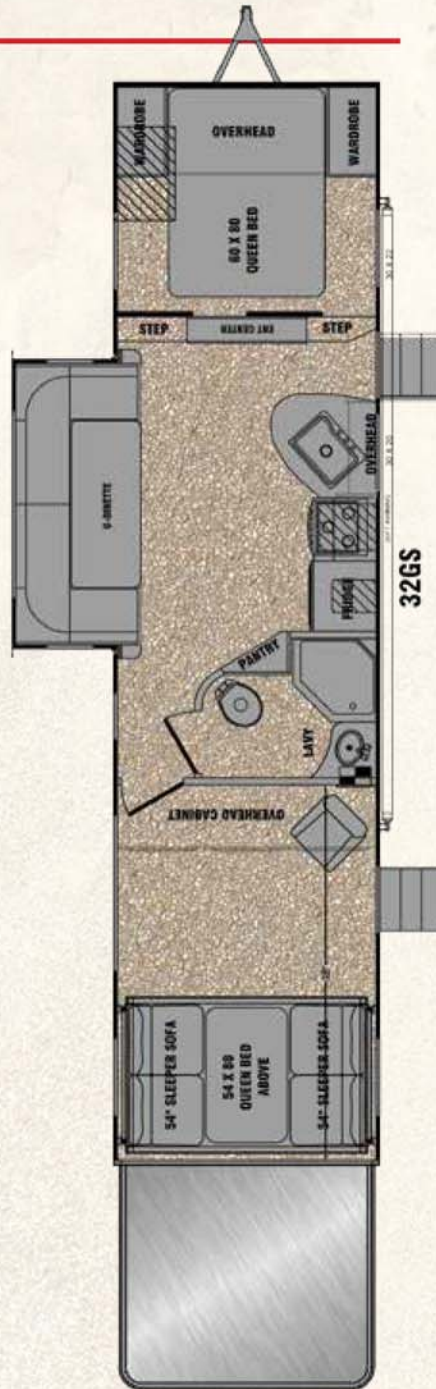
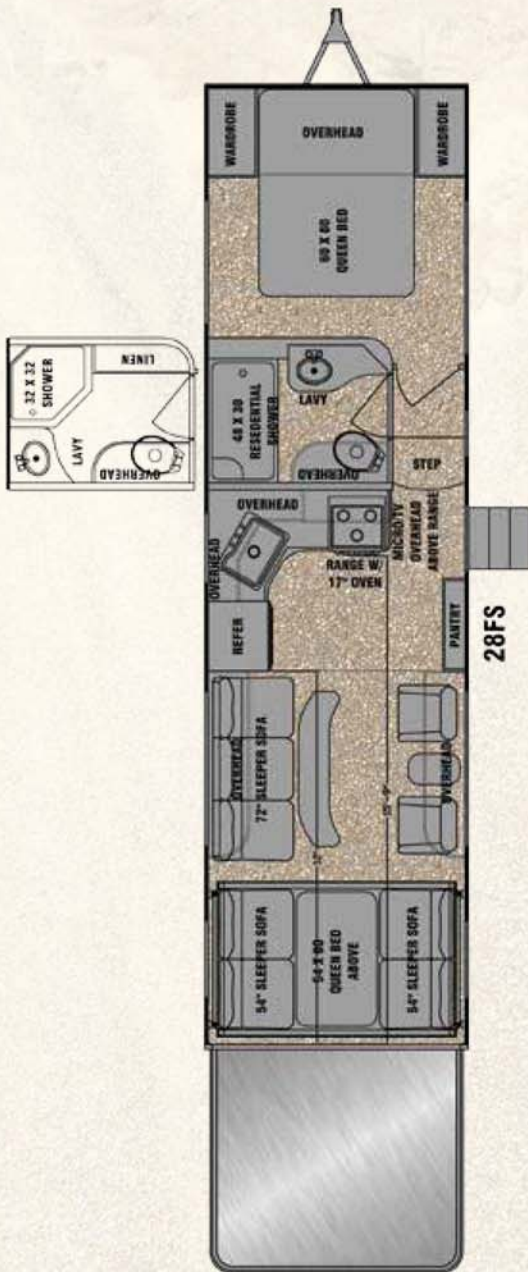
Ext Length	26' 3"
Ext Width	102"
Int Height	96"/101"
Cargo R/S	11' 6"
Cargo C/S	12' 3"
GVWR	12,900
Axle Weight	6,120
Hitch Weight	1,273
UVW	7,393
Payload	5,507
Fresh Water	174 Gal
Gray Water	50 Gal
Black Water	50 Gal
Fuel Tank	40/18 Gal

24FBH

Ext Length	29' 0"
Ext Width	102"
Int Height	96"/101"
Cargo R/S	12'
Cargo C/S	16' 3"
GVWR	12,900
Axle Weight	6,525
Hitch Weight	1,288
UVW	7,863
Payload	5,037
Fresh Water	174 Gal
Gray Water	50 Gal
Black Water	50 Gal
Fuel Tank	40/18 Gal

26FS

Ext Length	30' 8"
Ext Width	102"
Int Height	96"/101"
Cargo R/S	11' 7"
Cargo C/S	15' 10"
GVWR	12,900
Axle Weight	6,951
Hitch Weight	1,303
UVW	8,254
Payload	4,646
Fresh Water	174 Gal
Gray Water	50 Gal
Black Water	50 Gal
Fuel Tank	40/18 Gal



STANDARD EQUIPMENT

INTERIOR

- 5,000 lb. D-Ring Tie-Downs Mounted to Frame
- 8 cu. ft. Double Door Refrigerator
- Corian® Countertops
- Two Jack Knife Sofas
- Rear Power Bed W/ Bottom Lounge
- Queen Bed in Bedroom
- Two Large Wardrobes in Bedroom (Certain Models)
- Two large Dresser Drawers in Bedroom (Certain Models)
- Radio W/ DVD and CD Player
- 30" Microwave with Built in Range Hood
- Resort Shower—Tri-Slide with Bench Seat
- Rear Roll Down Screen
- 101" Interior Height W/ Industry First "Barrel Ceiling"
- 3 Burner Stove W/ Gas Oven
- Porcelain Foot Flush Toilet

EXTERIOR

- Aluminum Wheels
- Power Awning
- One Piece Rubber Roof
- Slam Latch Baggage Doors
- Locked Battery Housing with Battery Disconnect
- Four Spot Lights - Two Door Side, Two Rear Mounts
- High Gloss Gel Coat Finish
- 16" Wheels
- Heated and Enclosed Underbelly
- Detachable Power Cord
- Welded Toy Lock Connection
- Pass Through Storage
- Front Diamond Plate Stone Guard

UTILITY

- EZ Lube 6000LB Axles
- Six Gallon DSI Water Heater
- Onan 4,000 Watt Generator W/ Built In Transfer Switch
- Interior LED Lighting
- Exterior LED Lighting
- 174 Gallon Fresh Water Tank
- 50 Gallon Gray Water Tank
- 50 Gallon Black Water Tank W/ Flush
- Quick Connect Water Port
- Dual 30 lb. LP Tanks with Crimped Rubber Lines
- Monitor Panel
- 18 gallon Generator Fuel Tank
- 40 gallon Equipment Fuel Tank

28FS

Ext Length	33' 5"
Ext Width	102"
Int Height	96"/101"
Cargo R/S	12'
Cargo C/S	15' 9"
GVWR	12,900
Axle Weight	7,374
Hitch Weight	1,318
UVW	8,692
Payload	4,208
Fresh Water	174 Gal
Gray Water	50 Gal
Black Water	50 Gal
Fuel Tank	40/18 Gal

32GS

Ext Length	36' 11"
Ext Width	102"
Int Height	96"/101"
Cargo R/S	12'
Cargo C/S	12'
GVWR	12,900
Axle Weight	TBD
Hitch Weight	TBD
UVW	TBD
Payload	TBD
Fresh Water	174 Gal
Gray Water	50 Gal
Black Water	50 Gal
Fuel Tank	40/18 Gal

AMPED

2014 TOY HAULERS



Amped Interior shown here with popular options such as barrel chairs with side table, stereo upgrade and 32" flat screen TV. Massive overhead storage cabinets with cargo netting shelves above are standard on all Amped toy haulers. ▼

Standard ceiling fan with rear roll down screen and screened window help keep your family cool on hot days. Two standard jackknife sofas in the rear with dinette table slide into the overhead when its time to load equipment. ▼



▲ There is comfortable sleeping for six in the Amped cargo area's rear power bed with sleeper lounge and large jackknife sofa.

Compare the AMPED Warranty:
1 year Road Side Assistance and 3 year structural warranty



OPTIONS: INTERIOR

- Neo Angle Shower Enclosure • Stereo Upgrade/Kicker Marine Speakers W/ LCD Touch Screen • 10" Kicker Sub-Woofer W/ Power Amp
- Two Queen Beds • Two Barrel Chairs in Place of Sofa • Slide-Out Storage Tray • 32" LCD TV

OPTIONS: EXTERIOR

- Ramp Patio Option • Detachable Outside Grill • Outside Kitchen • Outside 32" LCD TV • Exterior Radio Entertainment Upgrade

OPTIONS: UTILITY

- CSA • 15,000 BTU Low Profile AC • 50 Amp Service W/ 2nd AC Prep and 5.5 Onan Generator • Atwood On-Demand Tankless Hot Water • Extra Tie Downs

OPTIONAL "AMPED UP PACKAGE"

- Power Stabilizer Jacks/Front and Rear • Power Tongue Jack

AMPED

See AMPED
on YouTube!

STEP UP AND GET AMPED!
WWW.GOEVERGREENRV.COM



EVERGREEN
RECREATIONAL VEHICLES

Evergreen RV reserves the right to change or discontinue at any time, without notice, prices, colors, materials, equipment, accessories, specifications, models, and packages, without incurring any obligations to make the same or similar changes to trailers previously sold. Colors shown may vary due to reproduction and printing processes.

10758 County Road 2 • Middlebury, IN 46540 • Phone: (574) 825-4298 • Fax: (574) 825-4299