

PROVIDENCE 2014

PROVIDENCE®



FLEETWOOD RV

## THE LUXURY OF HOME

Surround yourself with luxurious details. Providence gives you all the comforts of home, meticulously crafted to your tastes—so you never have to stop living stylishly. No matter where Providence takes you, you'll always be enveloped in luxury.



PROVIDENCE 42P SHOWN IN LINEN LATTE INTERIOR DÉCOR WITH SPICE WOOD CABINETRY



## WHY BUY PROVIDENCE?

**Impressive Exterior** Providence makes a striking first impression with its commanding size, sparkling paint and obvious attention to detail.

**Cummins® 450HP Diesel Engine** As one of the finest performing diesel engines in the world, the Cummins® 8.9L ISL engine provides mighty power underfoot.

**Sophisticated Décor** Travel surrounded by sumptuous elegance, where everything delights the eye. Providence elevates adventure to a new level of luxury.

**Top-of-the-Line Components** Providence is equipped with high-end brand names that carry the prestige and quality you expect. The appliances, electronics and furnishings are top-notch.

**Upscale Conveniences** To make life more comfortable, Providence contains step-saving features at every turn. It's as if we anticipated your every need.



# 2014 GRAPHICS AND DÉCOR

## PROVIDENCE

Both inside and out, we offer a wide selection of colors, styles and finishes. From the moment you lay your eyes on a Fleetwood RV, the high-style graphics and décor collection welcome you with gracious beauty and contemporary design. We've paid attention to every detail. So wherever you are, you'll feel right at home.



CASHMERE CHARM



LINEN LATTE



TIMELESS BLACK

	CASHMERE CHARM	LINEN LATTE	TIMELESS BLACK		CABINETRY
SOFA				CINNABAR	
ACCENT					
BEDSPREAD				SPICE	
COUNTERTOP					
FLOORING					
CARPET					

# STANDARD FEATURES AND OPTIONS

## INTERIOR THROUGHOUT

- Aqua-Hot® Heating System 50,000 BTU (House & Water)
  - 84" Interior Ceiling Height
  - Complete PEX Plumbing System
  - Crown Molding w/Decorative Corner Caps
  - Manual Double Roller Shades
  - Deluxe Roller Bearing, Full-Extension Drawer Guides & Transit-Ship Locks
  - Fan-Tastic® Power Roof Vent w/Wall Switch (3)
  - Solid-Surface Entry-Step w/LED Accent Lights
  - Demand Water Pump w/Filter
  - 3 Roof-Mounted, High-Efficiency A/C w/Solar Panel, Chill Grills & Bedroom Heat Pump
  - Solid Wood Face Frame, Select Cabinets
  - Hardwood Cabinet Doors/Drawers
  - LED Lighting
  - Vinyl Padded Ceiling
  - Wall Switches (Includes Switches for Ceiling Lights & Vents)
  - Whole Coach Water Filtration System
  - Central Vacuum System
  - Stackable Washer & Dryer
- Optional*
- CSA Package (Canadian Specs)\*\*

## DRIVER CONVENIENCE

- Adjustable 3-Point Seatbelts at Driver & Front Passenger Seats (w/Adjustable Shoulder Straps)
  - Xite® Touch Screen Dash Radio w/GPS Navigation & Sirius®
  - Automotive Wrap-Around Dash
  - Driver Left-Console w/Lower Storage Bin
  - Color Back-Up Monitor
  - Heated Chrome Power Exterior Mirrors w/Turn Signals & Sideview Cameras
  - Auxiliary Start Circuit
  - Backlit Switches & Gauges
  - Battery Disconnect System
  - Cruise Control
  - Manual Driver/Passenger Roller Shades/Blinds
  - Front Power Roller Shades/Blinds
  - Villa® Driver Passenger Soft-Touch Captain's Chairs w/Reclining Back & 6-Way Power Controls
  - Denso® High-Output Auto A/C Heater Combo
  - Passenger Armrest w/Integrated Magazine Rack
  - Passenger Seat Power Footrest & Adjustable Arm
  - Radio Switch Main/Auxiliary Power
  - Soft-Surface Automotive Dash
  - Smart Wheel w/Tilt/Telescoping Steering Wheel
  - Power Entry Step Cover
  - 110-Volt Power Outlet at Dash
  - (2) 12-Volt Power Outlets at Dash
  - USB Charger (Driver Side)
- Optional*
- Satellite Radio (Subscription Required)

## GALLEY

- 1.7 cu.ft. Convection Stainless Steel Microwave Oven w/Built-in Range Hood & Lights
  - Residential Refrigerator/All Electric
  - Electric 2-Burner, Induction Cooktop
  - Adjustable Cabinet Shelves (Select Cabinets)
  - Polished Porcelain Tile
  - Polished Solid-Surface Countertop w/Sink & Range Covers
  - Large, Double Solid-Surface Sink
  - Single-Lever Galley Faucet w/Pullout Sprayer
  - Under-Galley Shelving & Wastebasket
- Optional*
- Dishwasher

## LIVING ROOM

- Sony® 40" LED HDTV Midship (42M)
  - Sony® 50" LED HDTV Midship (42P)
  - Sony® DVD Home Theater Sound System w/Hidden Surround Sound Speakers
  - Wall-to-Wall High Gloss Porcelain Flooring
  - Comfort Fit by Villa® Residential Seat Styling
  - TV Antenna
  - Ultraleather™ Sofa Bed (Select Models)
  - Ultraleather Sofa Sleeper (Select Models)
  - Ultraleather Love Seat (Select Models)
- Optional*
- Sony® 32" LED HDTV in Front Overhead
  - Sony 60" LED HDTV Mid-Ship (42P)
  - Ultraleather U-Shaped Dinette/Sofa (42M)
  - Ultraleather U-Shaped Dinette/Recliner (42P)
  - Facing Dinette

## BEDROOM

- King Dream Easy Memory Foam Mattress
  - Bedspread w/Décor Pillows
  - Slide-Out Features
  - Overhead Cabinets
  - Coffered Ceiling
  - Mirrored Wardrobe Doors
  - Remote Generator Start Switch
  - Rear Wardrobe w/Cedar Lining, Carpeted Floor & Wire Organizer
  - Wardrobe Lighting
  - Bedroom Entertainment Center w/Sony® 32" LED HDTV
- Optional*
- King Adjustable Air Mattress

## BATHROOM

- Cabinet Toe Kicks
- Hardwood Bath Door/Trims
- Molded Shower Enclosure w/Skylight
- Porcelain Toilet w/Water Saver
- Solid-Surface Sink
- A/C Venting
- LED Light Over Sink
- Tecma® Silence Plus 2-Button Porcelain Vacuum Flush Toilet (42M)

## SAFETY/CONVENIENCE (INTERIOR)

- Carbon Monoxide Detector/Alarm
- Energy Management System (EMS) w/Soft Start
- Central Electrical Panel
- Fire Extinguisher
- Multiple Seatbelt Locations
- Propane Detector/Alarm
- Smoke Detector/Alarm
- Neutral Loss Protection

## EXTERIOR THROUGHOUT

- 120V/12V AC/DC Converter
- 2,800-Watt Pure Sine Wave Inverter w/Remote
- 4-Point Automatic Levelers
- 50-Amp Service
- 8.0 kW Onan® Quiet Diesel Generator
- Awning Rail/Drip Molding (Both Sides)
- Dual-Pane Windows w/Screens
- Molded Fiberglass Roof
- Fiberglass Front Quarter Panels
- Fiberglass Front/Rear Caps w/High Mounted Taillights
- Fiberglass Wheel Well Trims
- Full-Body Paint w/Color & Graphics -3 Choices
- Remote/Heated Rear-View Mirrors
- Utility Compartment w/Exterior Shower
- Water Pump Switch (Multiple Locations)
- Weather Pro Power Awnings (Patio Awning Includes Wind Sensor)
- Front & Mid-Coach Docking Lights
- Manual Generator Slide
- Doorside Patio Receptacle
- Rear Rockguard

## EXTERIOR THROUGHOUT (CONTINUED)

- Optional*
- Exterior Entertainment Center w/Sony® 32" LED HDTV and High Output, Splashproof AM/FM/DVD Sound System
  - Window Awning Package
  - Satellite Dish Winegard Stationary
  - Satellite Dish Winegard In-Motion
  - Rear Ladder
  - 1st Full Bay 90" Slide Tray
  - 1st Full Bay 36"/54" Slide Trays
  - 2nd Full Bay 90" Slide Tray
  - 2nd Full Bay 36"/54" Slide Trays

## AUTOMOTIVE

- Aluminum Wheels
- Fog Lamps
- Large One-Piece Bonded-in Windshield
- Mud Flaps
- Color Rear & Side-View Cameras
- Windshield Wipers w/Wet Arm
- Tire Valve Extenders
- Underhood Utility Light
- Protective Front Mask
- Keyless Entry Remote
- Remote/Heated Chrome Rear-View Mirrors w/Turn Signals & Sideview Cameras

## SAFETY/CONVENIENCE (EXTERIOR)

- Automatic Generator Start System
- ABS Air Brakes
- 20' Sewer Hose
- Automotive Safety Glass
- Daytime Running Lights
- Easy Sweep Flooring at Entry Step
- Entry Door w/Screen Door & Deadbolt Lock
- Four 6V/Deep-Cycle House Batteries
- Lighted Entry Assist Handle
- Park Cable Receptacle
- Porch Light
- Power Entry Step
- Rear Side Marker Lights
- Black Tank San-T-Flush™ System
- Touch Sensor Tank Monitoring System
- Utility Compartment w/Exterior Shower

## STORAGE

- Continuous One-Piece Compartment Bulb Seal
- Hidden, Stainless Steel Latch Rods
- Large Lighted Roto- Molded Polyethylene Compartments
- Side Swing, Insulated Aluminum Luggage Doors w/ Single Paddle Latch & Corrosion Resistant Steel Hinges
- Pass-Through Storage

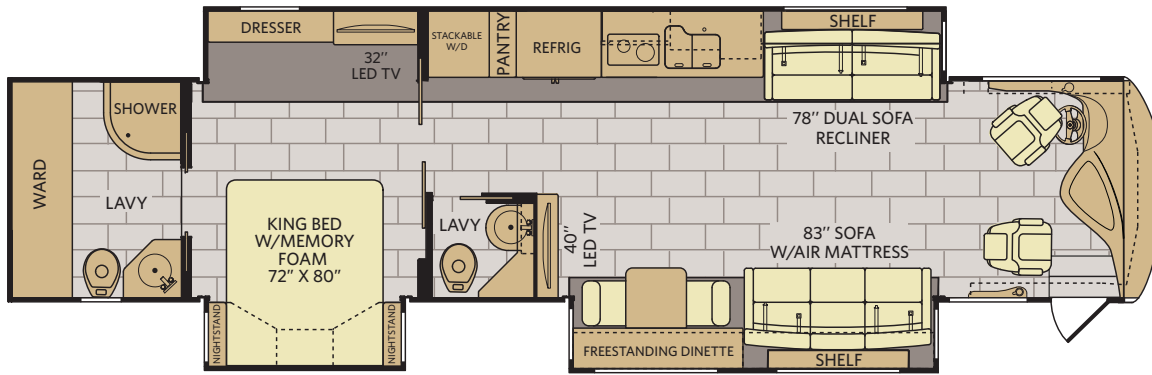
## BODY STRUCTURE

- Aluminum Interlocking Floor/Wall/Ceiling Framing
- Heated Water & Holding Tank Compartments
- Molded Fiberglass Radius Roof w/Ducted A/C
- Quiet Cool Ducted A/C
- Vacu-Bond® Upper/Lower Floor, Walls & Ceilings
- Power Bridge® II Chassis

\*Not all options are available on all floor plans. See your Fleetwood dealer for details.  
\*\*CSA standards may require substitution or deletion to achieve conformance.

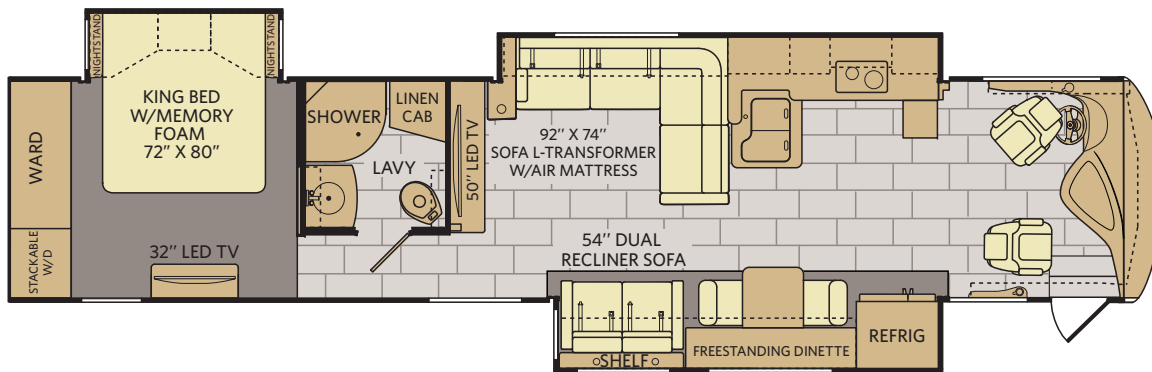
# PROVIDENCE FLOOR PLANS

42M



Available options: 087, 107, 635, 830, 856

42P



Available options: 081, 087, 107, 139, 630, 830, 856

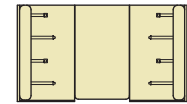
## FLOOR PLAN OPTIONS

OPT. 081  
60" LED TV  
MID-SHIP 42P

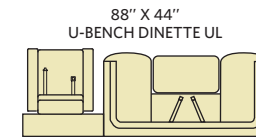
OPT. 087  
FRONT 32"  
LED TV

OPT. 107  
DISHWASHER

OPT. 139  
LIVING ROOM  
FIREPLACE

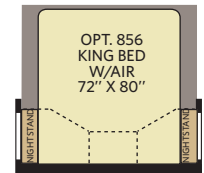


OPT. 830  
FACING DINETTE

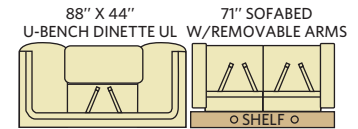


88" X 44"  
U-BENCH DINETTE UL

OPT. 630  
U-SHAPED DINETTE / RECLINER



OPT. 856  
KING BED  
W/AIR  
72" X 80"



88" X 44"  
U-BENCH DINETTE UL

71" SOFABED  
W/REMOVABLE ARMS

OPT. 635  
U-SHAPED DINETTE / SOFA

# WEIGHTS & MEASUREMENTS

CHASSIS	POWER BRIDGE® II	
	42M	42P
<b>MODELS</b>		
Wheelbase (inches)	302"	302"
GVWR (lbs) <sup>1</sup>	44,700	44,700
Front GAWR (lbs) <sup>2</sup>	14,700	14,700
Tag Axle GAWR	10,000	10,000
Rear GAWR (lbs) <sup>2</sup>	20,000	20,000
GCWR (lbs) <sup>3</sup>	59,700	59,700
Hitch Rating Weight (lbs) <sup>1</sup>	15,000	15,000
Tongue Weight (lbs) <sup>1,††</sup>	1,500	1,500
Fuel Capacity (gal)	150	150

## POWER BRIDGE® II CHASSIS

**Model:** Freightliner® XCM Series  
**Engine:** Cummins® 9L ISL  
**Transmission:** Allison® 3000 MH 6-Speed  
 w/Electronic Shifter

**Alternator:** Leece Neville 170 Amp  
**Torque:** 1,250 lb-ft @ 1,400 RPM  
**Horsepower:** 450HP

## DIMENSIONS & CAPACITIES

MODELS	42M	42P
Overall Length (inches) <sup>4</sup>	43' 6"	43' 6"
Overall Height (with A/C)	12' 10"	12' 10"
Overall Width (maximum) <sup>5, 6</sup>	102"	102"
Interior Height (maximum)	84"	84"
Interior Width (maximum)	96"	96"
Interior Storage (cu. ft.)	207	200
Exterior Storage (cu. ft.)	189	188
Fresh Water Holding Tank (gal)	100	100
Grey Water Holding Tank (gal)	60	60
Black Water Holding Tank (gal)	40	40

## ADDENDUMS

- GVWR (Gross Vehicle Weight Rating) is the maximum permissible weight of this fully loaded motorhome. The GVWR is equal to or greater than the sum of the (UVW) unloaded vehicle weight plus the (OCCC) occupant cargo-carrying capacity.
- GAWR (Gross Axle Weight Rating) is the maximum permissible loaded weight a specific axle is designed to carry.
- GCWR (Gross Combined Weight Rating) is the value specified by the motorhome manufacturer as the maximum allowable loaded weight of this motorhome with its towed vehicle. Towing and braking capacities may be different. Refer to Fleetwood and chassis manufacturer's manuals for complete information.
- Length measured from front bumper to rear bumper (excludes accessories).
- Excludes safety equipment and awnings.
- Motorhomes feature a body width over 96" which will restrict your access to certain roads. Before purchasing, you should research any state and/or province road laws which may affect your usage.
- Tank manufacturer's listed water capacity (WC). Actual propane capacity is 80% of water listing as required by the safety code.

† The chassis manufacturer recommends the installation of a supplemental brake control system to activate the brakes on the vehicle or trailer you are towing. Hitch receiver ratings expressed are maximum for the hitch receiver installed and may require the purchase of additional equipment that is dependent on the weight of the towed load. Consult with hitch receiver manufacturer for further information.

†† Minimum Towable Load is the available weight, up to GCWR, when the coach is fully loaded to maximum GVWR. However, if the coach is loaded to something less than maximum GVWR, that extra available weight can be added to your Towable Load. For example, if your coach is loaded to 1000lbs less than maximum GVWR, your Towable Load increases accordingly.

\* UVW and OCCC are found on the label containing the federal certification tag in each RV.

**IMPORTANT—PLEASE READ:** Product information, photography and illustrations included in this publication were as accurate as possible at the time of printing. For further product information and changes, please visit our website at [www.fleetwoodrv.com](http://www.fleetwoodrv.com) or contact your local Fleetwood RV dealer. Prices, materials, design and specifications are subject to change without notice. All weights, fuel, liquid capacities and dimensions are approximate. Fleetwood RV has designed its recreational vehicles to provide a variety of uses for its customers. Each vehicle features optimal seating, sleeping, storage and fluid capacities. The user is responsible for selecting the proper combination of loads (i.e., occupants, equipment, fluids, cargo, etc.) to ensure that the vehicle's capacities are not exceeded.

# PROVIDENCE

## WHY FLEETWOOD RV?



### Quality

There's no cutting corners. Skilled craftsmen build every Fleetwood RV for maximum durability and longevity.



### Trust

More people trust Fleetwood RV. After all, we've spent over 60 years perfecting RVs, earning the loyalty of generations of RVers.



### Passion

We're truly passionate about the RV lifestyle. Fleetwood RV was founded by RV enthusiasts, and that tradition continues today.



### Safety

You've got precious cargo. So we've engineered dozens of innovative safety features into our motor homes to give you more peace of mind.



### Service

Help is nearby with 24/7 emergency Fleetwood RV Trusted Roadside Assistance\*. And when you need an upgrade or repair, you'll find Fleetwood RV dealers all across North America ready to assist you.



### Warranty

Exclusive RV OwnerCare warranty. See your Fleetwood RV dealer for details.

\* All 2014 Fleetwood RV motorhomes include a 1-year emergency roadside assistance membership. For complete info, see your Fleetwood RV dealer.

\*\*For complete info, see your Fleetwood RV dealer.

## FLEETWOOD RV



Visit [FleetwoodRV.com](http://FleetwoodRV.com) or find Fleetwood RV Tablet apps in the App Store or Google Play.

### RV OWNERCARE\*\*

Limited one-year/15,000-mile coach warranty and three-year/45,000-mile structural warranty, whichever occurs first, and it is fully transferable for the first 12 months. RV OWNERCARE is one of the RV industry's most comprehensive programs and includes systems, appliances, components and construction, with no deductible and no service charge. RV OWNERCARE coverage is provided by a company that will be around in the future to service your needs. See your nearest Fleetwood RV dealer for a full explanation of benefits and restrictions.

### CONTACT US

To locate a dealer near you, visit our website at [www.fleetwoodrv.com](http://www.fleetwoodrv.com) or call 1-800-322-8216. We can also be contacted at Fleetwood RV Customer Relations, P.O. Box 1007, Decatur, IN 46733.

### FLEETWOOD MOTORHOME ASSOCIATION

As a Fleetwood RV owner, you're invited to become a member of the Fleetwood Motor Home Association (FMA). Becoming a member is the perfect way to meet other Fleetwood owners who love to travel across American and share in the RV lifestyle. Visit the FMA website at [www.fma4fun.org](http://www.fma4fun.org) to learn more and join the fun.



### YOUR LOCAL FLEETWOOD RV DEALER IS:

©2013. Fleetwood RV, Inc.  
Printed in the USA. Inventory Control Number PRO14B1, 10/13.  
Model Year 2014, First Edition.