

Freedom Express ▶ DEEP SLIDES ▶ TOY HAULERS ▶ EXPANDABLES



FREEDOM Freedom Express TO EXPLORE

ULTRA LIGHT TRAVEL TRAILERS ▶ DEEP SLIDES ▶ TOY HAULERS ▶ EXPANDABLES




Coachmen
Leader to the Great Outdoors.

Freedom of Choice – Ultra Lightweight Towability & Convenience

Lightweight Freedom Express has been designed for ease of towing with today's half ton and mid-sized SUVs. All tanks are located under the floor to lower the center of gravity for increased storage capacity and improved handling. Sidewalls are built with Azdel substrate that's 50% lighter than wood and is impervious to moisture, rot and mildew while providing improved insulation.

Our 38" Deep Slide models offer expansive single, double and triple slide living areas. Choose from the industry's best bunk and rear lounge floorplans, plus V-nose and Toy Hauler models.

The Liberty Edition luxury upgrade is available on Deep slide models (Maple Leaf Edition in Canada). It includes high end amenities usually reserved for travel trailers and fifth-wheels costing thousands of dollars more.



320 BHDS This Liberty Edition upgrade triple slide bunk model features an island kitchen, electric fireplace with a dual entry bath. Shown in Desert Onyx decor.

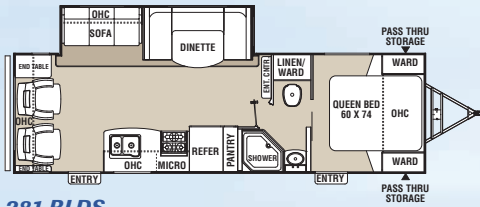
Deep Slides	281 RLDS	282 BHDS	292 BHDS	297 RLDS	298 REDS	305 RKDS	310 BHDS	312 BHDS	320 BHDS
Shipping Weight	5,550	5,572	5,492	6,499	6,876	6,199	6,597	7,122	7,015
Hitch Weight	740	737	740	798	766	876	765	883	841
Carrying Capacity	1,908	2,086	1,306	3,953	2,982	3,259	3,061	3,336	3,643
Exterior Length (Bumper to Hitch)	31' 8"	31' 11"	33' 5"	35' 2"	35' 2"	34' 6"	35' 7"	36' 9"	36' 11"
Exterior Height (Includes A/C)	10' 7"	10' 7"	10' 7"	10' 9"	10' 9"	10' 9"	10' 9"	10' 11"	10' 11"
Interior Height (Coach)	78"	78"	78"	78"	78"	78"	78"	78"	78"
Awning Length	18'	18'	18'	20'	18'	20'	18'	18'	20'
Fresh Water Capacity (gal.)	49	49	49	49	49	49	49	49	49
Grey Water Capacity (gal.)	33	33	33	33	33	63	33	33	66
Waste Water Capacity (gal.)	33	33	33	33	33	33	33	33	33
Tire Size	ST205/75R14C	ST205/75R14C	ST205/75R15C	ST225/75R15D	ST225/75R15D	ST225/75R15D	ST225/75R15D	ST225/75R15D	ST225/75R15D

LIBERTY EDITION

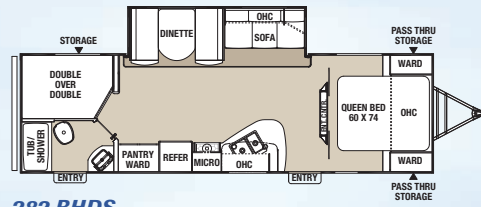
BY FREEDOM EXPRESS

MAPLE LEAF EDITION

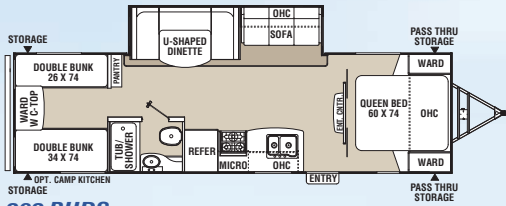
BY FREEDOM EXPRESS



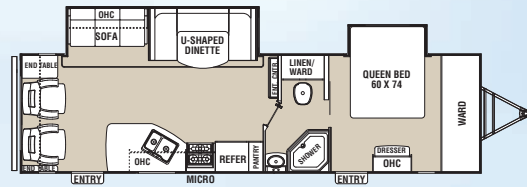
281 RLDS



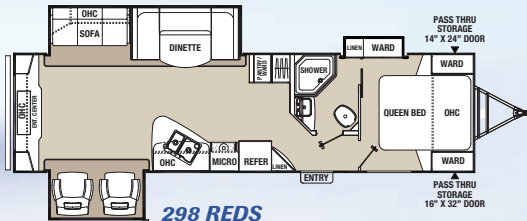
282 BHDS



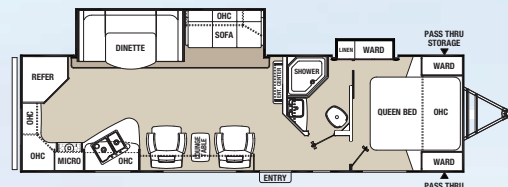
292 BHDS



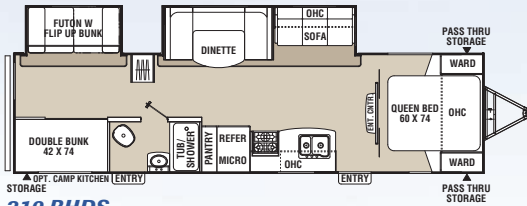
297 RLDS



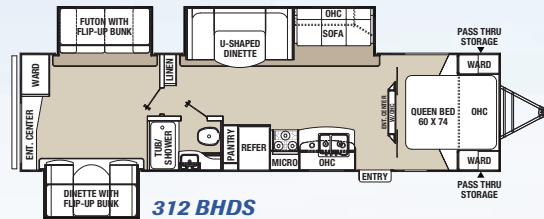
298 REDS



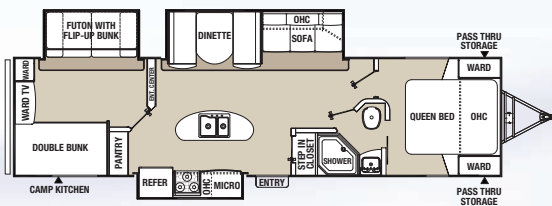
305 RKDS



310 BHDS



312 BHDS



320 BHDS



297 RLDS This deep slide master bedroom has a large front wardrobe, a vanity and is shown in Caramel decor.



320 BHDS Large closet shelves provide plenty of out of the way for convenience.

320 BHDS This versatile rear bedroom's upper bunk folds-up and out of the way for convenience. Cube cushions can be rearranged into different configurations for family and friends.





Total Freedom in Nine Ultra Lightweight Floorplans

When there's a chance to escape from your busy life, Freedom Express makes it hassle free, fun and easy. These models are value packed with industry leading features and conveniences including Congoleum® designer flooring, seamless countertops with waterfall edges, full extension ball bearing drawer glides and our exclusive removable silverware drawer.

310 BHDS This Liberty Edition deep slide has a private master suite up front and a swivel 32" TV for convenient viewing throughout the living area. Shown in Caramel decor.

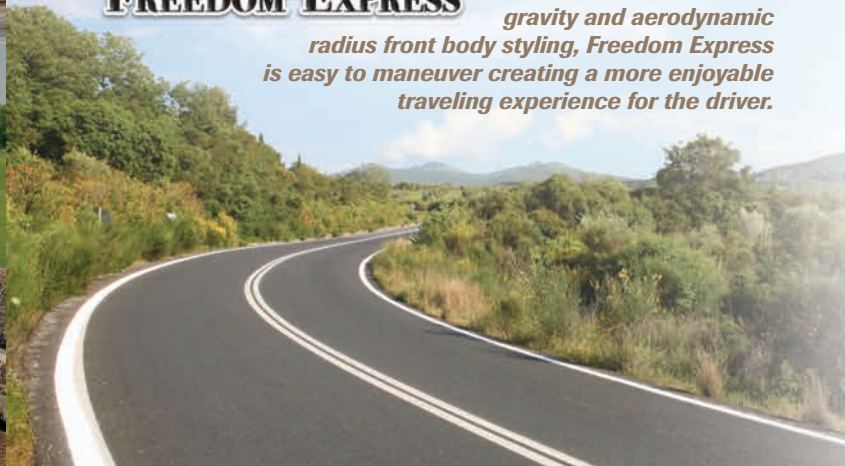
297 RLDS Liberty Edition has a wide open floorplan featuring an ample 87" dinette with well-planned storage underneath and comfortable rear lounge chairs. Shown in Caramel decor.

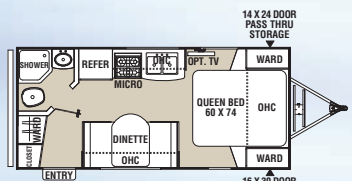
Freedom Express	191 RB	192 RBS	230 BH	233 RBS	242 RBS	246 RKS	269 BHS	280 RLS	291 QBS
Shipping Weight	3,317	3,535	3,729	4,471	4,492	4,310	4,440	4,699	5,216
Hitch Weight	364	392	404	635	487	500	480	587	594
Carrying Capacity	2,381	2,363	2,873	2,487	2,466	2,648	3,018	2,546	2,036
Exterior Length (Bumper to Hitch)	22' 3"	22' 6"	26' 11"	24' 11"	27' 10"	28' 3"	29' 10"	31' 3"	33' 4"
Exterior Height (Includes A/C)	10'	10'	10'	10' 7"	10'	10'	10'	10'	10'
Interior Height (Coach)	78"	78"	78"	78"	78"	78"	78"	78"	78"
Awning Length	12'	14'	18'	16'	18'	18'	16'	18'	18'
Fresh Water Capacity (gal.)	36	36	36	36	49	49	49	49	49
Grey Water Capacity (gal.)	30	30	30	30	33	33	33	33	33
Waste Water Capacity (gal.)	30	30	30	30	33	33	33	33	33
Tire Size	ST205/75R14C	ST205/75R14C	ST205/75R14C	ST205/75R14C	ST205/75R14C	ST205/75R14C	ST205/75R14C	ST205/75R14C	ST205/75R14C



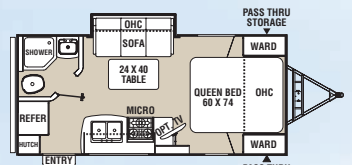
Ultra Lights

With a lower center of gravity and aerodynamic radius front body styling, Freedom Express is easy to maneuver creating a more enjoyable traveling experience for the driver.

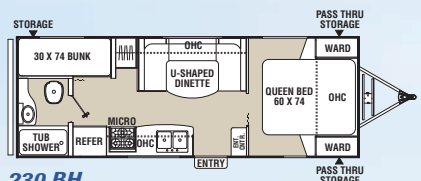




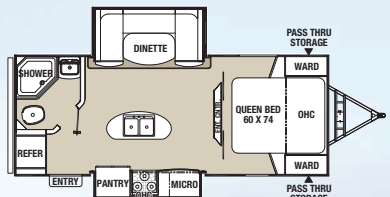
191 RB



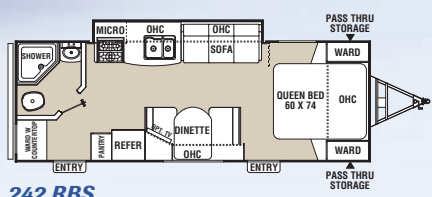
192 RBS



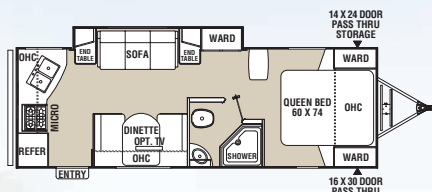
230 BH



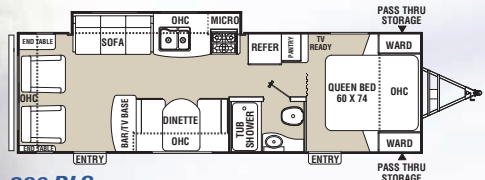
233 RBS



242 RBS



246 RKS

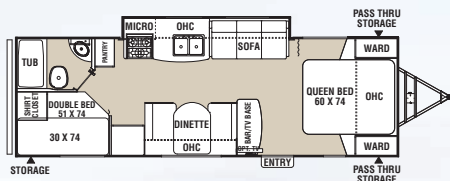


280 RLS

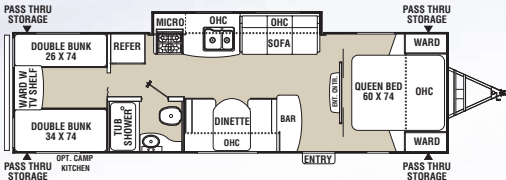


246 RKS This popular rear kitchen model with sofa and wardrobe slide has plenty of storage with multiple wardrobes. Greystone decor shown.

192 RBS This rear bath model is under 4000 lbs. and features a walk-around queen bed, entertainment center and sofa slide out. Shown in Garnet decor.



269 BHS



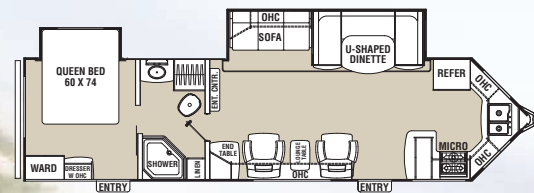
291 QBS



Freedom to Answer the Call of the Open Road

302 FKV This V-Nose model has over 50 cu. ft. of front kitchen space for the chef on board. The large wrap-around countertop provides plenty of workspace. The spacious living room is perfect for entertaining. Twin rocking chairs are shown here with a clever convertible end table that flips-up to create a cushiony extra seat for the U-dinette. Shown in Latte decor with the Premium Package.

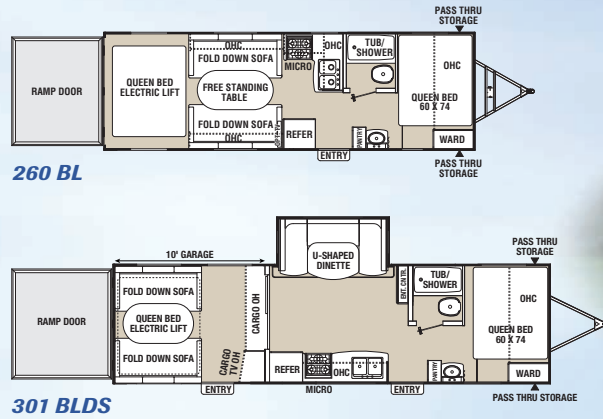
V-Nose



302 FKV

Freedom Express V-Nose	302 FKV
Shipping Weight	6,766
Hitch Weight	789
Carrying Capacity	2,992
Exterior Length (Bumper to Hitch)	34' 9"
Exterior Height (Includes A/C)	10' 9"
Interior Height (Coach)	78"
Awning Length	20'
Fresh Water Capacity (gal.)	49
Grey Water Capacity (gal.)	66
Waste Water Capacity (gal.)	33
Tire Size	ST225/75R15D

Freedom Express Blast	260 BL	301 BLDS
Shipping Weight	4,995	6,170
Hitch Weight	862	980
Carrying Capacity	2,605	3,688
Exterior Length (Bumper to Hitch)	29' 2"	33' 7"
Exterior Height (Includes A/C)	10' 2"	11' 9"
Interior Height (Coach)	78"	90"
Awning Length	18'	18'
Fresh Water Capacity (gal.)	98	98
Grey Water Capacity (gal.)	33	33
Waste Water Capacity (gal.)	33	33
Tire Size	ST205/75R14C	ST225/75R15D



Toy Haulers

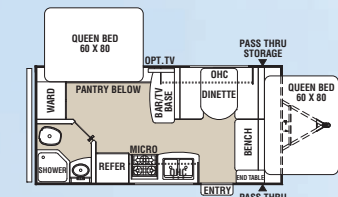
Whether you're hauling mini-bikes or motocross, four wheelers or Fat Boys, there's a Freedom Express Toy Hauler for you. The Deep Slide 301BLDS has a 10' enclosed garage with a slider patio door, raised roof line and a beavertail ramp transition.



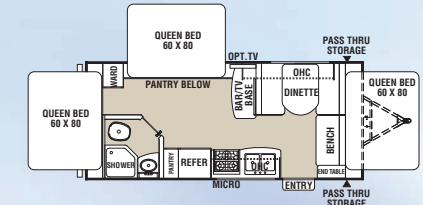
301 BLDS Choose an optional queen bed, Sit-N-Sleep sofa, or HappiJac dinette in the garage area to best fit your lifestyle. Shown in Copper Decor.



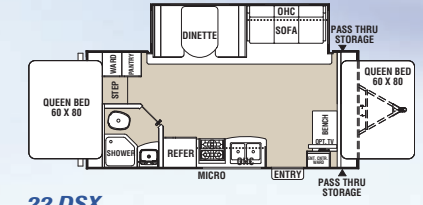
21 TQX Freedom Express Expandables feature exceptional floor space, storage and counter space – remarkable for an expandable! This triple-tent 21TQX is shown in Copper decor.



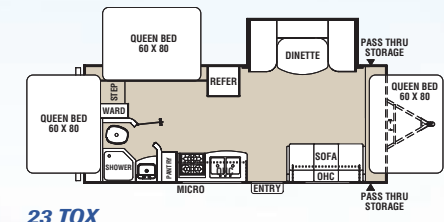
19 SQX



21 TQX



22 DSX



23 TQX

Expandables

Pack all the livability of a 28'-33' travel trailer into the towability (and price) of a 19'-23' trailer. Freedom Express Expandables are easy to tow and come with the Secure-Lok tent system which eliminates the hassle of Velcro or bungs, making set-up and tear-down a snap – even for one person.



Built for Easy Towing and Maneuverability

21 TQX This roomy Expandable features three fold-out queen beds, plenty of storage – all at a weight less than 4,000 lbs.!

Freedom Express Expandables	19 SQX	21 TQX	22 DSX	23 TQX
Shipping Weight	3,080	3,335	4,135	4,293
Hitch Weight	448	430	550	600*
Carrying Capacity	2,418	2,463	2,863	2,665
Exterior Length (Bumper to Hitch)	20' 4"	22' 7"	22' 2"	24' 3"
Exterior Height (Includes A/C)	10'	10'	10' 6"	10' 7"
Interior Height (Coach)	78"	78"	78"	78"
Awning Length	12'	14'	16'	18'
Fresh Water Capacity (gal.)	36	36	36	36
Grey Water Capacity (gal.)	30	30	30	30
Waste Water Capacity (gal.)	30	30	30	30
Tire Size	ST205/75R14C	ST205/75R14C	ST205/75R14C	ST205/75R14C

*Estimated



- 3M breathable graphics
- Tinted, safety glass windows
- Trussed crossmembers
- Crowned aluminum reinforced roof
- EDPM rubber roofing
- Azdel Composite Panels
- Aerodynamic front profile
- Dual 20 lb. LP gas tanks
- Welded Aluminum structure, vacuum-bonded sidewalls and flooring
- Smooth exterior fiberglass skin
- Aluminum framed openings
- Fully enclosed, heated underbelly (27' and above)
- Fully welded tubular aluminum floor structure
- Happijac SureTrac™ rack and pinion slide systems
- Congoleum Designer Carefree Resilient Flooring
- Powder E-coated, welded I-beam frame
- Super-Lube® axle hubs
- Stable-Ryd® spread axle design (27' and above)
- Nitrogen filled radial tires

Freedom Express Construction Features



AZDEL
SUPERLITE™
ONBOARD™

- ▼ 50% Lighter than wood
- ▼ No rot, mold or water damage
- ▼ R-2 thermal insulation
- ▼ Odorless, no formaldehyde
- ▼ Sound & energy absorbing
- ▼ Impact & puncture resistant
- ▼ Made in USA

Freedom Express is Truly Green



Freedom Express is TRA gold level rated. As a certified green RV, Freedom Express utilizes effective production techniques in combination with healthy materials, plus efficient usage of energy and water to produce a high quality RV with less environmental impact.

Lightweight Towability and Enhanced Aerodynamics

Freedom Express Ultra-Light travel trailers are ideal for half-ton tow vehicles and optimized fuel efficiency. Designed with fully laminated, aluminum framed walls and floor, Freedom Express travel trailers and hybrid expandables are incredibly lightweight and durable.

Freedom Express & Deep Slide Standard Features & Options

FE = Freedom Express Ultra Lites ▼ LE = Liberty/Maple Leaf Edition Ultra Lites ▼ DS = Deep Slide Models ▼ EXP = Expandable Models ▼ TH = Toy Hauler

	FE	LE
INTERIOR & DÉCOR		
Cierra Cherry Colored Cabinetry and Arched Overheads	X	X
Maple Hardwood Cabinet Doors and Drawer Faces	X	X
Furniture Grade, Pocket Drilled and Screwed Stile and Rail Cabinet Front Construction	X	X
Mortise & Tenon Cabinet Door Construction	X	X
Full Extension Roller Bearing Drawer Guides	X	X
Three Designer Decors - Copper, Greystone, Garnet	X	N/A
Three Designer Decors - Latte, Caramel, Onyx	N/A	X
Designer Hard Valance Window Treatments	X	X
Pleated Night Shades in Living Area	X	X
Optic-Lense Lighting Package	X	X
Range Hood with 12V Exhaust and Light	X	X
Sealed/Seamless Countertops	X	X
Solid Surface Kitchen Countertops	N/A	X
Brushed Nickel Hardware	X	X
High-Rise Kitchen Faucet	X	X
60/40 Stonecast Composite Kitchen Sink	X	X
Silverware Drawer with Removable Tray (N/A 260 BK)	X	X
Jackknife Sofa	X	X
43" Deep Convertible Booth Dinettes (Select models)	X	X
87" Convertible U-Dinettes (Select models)	X	X
Dinette Storage Access Doors (Deep Slides)	X	X
Accent Wall With Designer Headboard in Master Bedroom (Most Models)	X	X
Evergreen Sleep System Mattress	X	X
Two Full-Length Mirrored Closets in Master, and Over-Bed Cabinets with Integrated Reading Lights	X	X
Two Nightstands with 110V Outlets (Most models)	X	X
Storage Under Master Bed and Bunks (Select models)	X	X
Wooden Privacy Slider Doors to Master Suite In Place of Curtain or Accordion Door (Most models)	X	X
Entertainment Tower with Rotating TV for Bedroom Viewing (Select models)	X	X
Exhaust Vent with Fan in Bathroom	X	X
Wood Medicine Cabinet with Bathroom Mirror	X	X
Foot Pedal Toilet	X	X
Porcelain Toilet	N/A	X
Interior Speakers with Selector Switch	X	X
55 Amp Power Converter	X	X
GFI Receptacles in Bathroom and Kitchen	X	X
LP Leak Alarm	X	X
Fire Extinguisher	X	X
Smoke and Carbon Dioxide Detector	X	X

	FE	LE
Multiple Egress Windows with Screen and Prop Rod	X	X
Shoe Storage (Select models)	X	X
Cable Support Tent Ends - 1000# Capacity (EXP)	EXP	N/A
Frame Mounted Tie-Down D-Rings In Floor	TH	TH
Adjustable High/Low Fresh Air Vents	TH	TH
Ducted Air Conditioning (27' & above)	X	X
Zippered Rollup Screen Wall with Privacy Panels at Ramp Door	TH	TH
Two Jackknife Sofas In Cargo Area (260BL)	TH	N/A
Large Indoor/Outdoor folding Table (260BL)	TH	N/A
Raised Roof Line - 90" Interior Cargo Height (301BLDS)	TH	TH
Beavertail Ramp Transition (301BLDS)	TH	TH
Sliding Patio Door Between Cargo and Living Areas (301BLDS)	N/A	TH
Helmet/Gear Storage in Cargo Area (301BLDS)	N/A	TH
EXTERIOR		
Aerodynamic Front Profile	X	X
Dual 20# LP bottles	X	X
LP Bottle Cover w/Valve Access	X	X
60° A-frame	X	X
Dual Battery Rack	X	X
Insulated and Painted Radius Entry Door w/Clear View Slider on Screen	X	X
Amber Patio Light	X	X
Double Entry Step	X	N/A
Triple Entry Step	N/A	X
Wide Stance Stable-Ryd Spread Axle Design (27' & above)	X	X
Premium Aluminum Rims	X	X
Nitrogen Filled Radial Tires	X	X
Automotive Process Painted Fenders	X	X
3M Digitally Printed, Breathable Graphics	X	X
Black Framed, Tinted, Safety Glass Windows	X	X
Marine Grade Exterior Speakers	X	X
Coleman 10K BTU Grill Station w/Storage (Most models)	OPT	OPT
Lighted Expanded Pass-through Storage (Most models)	X	X
Water Heater Bypass	X	X
30 Amp Power Cord with Storage Compartment	X	X
Heavy Duty Welded Safety Chains	X	X
Four-Wheel Electric Brakes	X	X
Breakaway Safety Cable	X	X
Exterior GFI Outlet Near Awning	X	X
High-Capacity Roto-Cast Holding and Fresh Water Tanks	X	X
Hinge Mounted Spring Assist Ramp Door System	TH	TH
Integrated Bar and Latch Locking System on Ramp Door	TH	TH

	FE	LE
HappiJac Double Hat Rail, Rack & Pinion 12V Slide System (18" slides)	X	N/A
LCI Rack & Pinion 12V Slide System with Full Width Welded Ram (38" slides)	X	X
A-Frame Mounted Generator/Storage Rack (N/A on Liberty/Maple Leaf Editions)	TH	N/A
Electric Awning (IPO Manual)	X	X
CONSTRUCTION		
Powder E-Coated Welded I-Beam Frame with Full Width Outriggers	X	X
Alumicage Welded Aluminum Structure, Vacuum Bonded Floor and Sidewalls	X	X
Azdel Composite (IPO Iuan behind fiberglass)	X	X
Smooth Fiberglass Exterior Skin	X	X
Aluminum Framed Openings	X	X
Powder E-Coated Steps and Axles	X	X
Floorplan Specific Cambered Frame Design	X	X
Full Walk-on, Crowned, Aluminum Reinforced Roof with EPDM Membrane over 3/8" Roof Decking	X	X
Double Wiper Seals on All Slideouts	X	X
Enclosed and Heated Underbelly (27' & above)	X	X
STANDARD EXTRAS		
Green Certification	X	X
Seal Tech and Rain Bay Testing on Every Unit	X	X
One-Year Free Membership to Coachnet Roadside Assistance	X	X
One-Year Free Membership to Coachmen Owner's Association (C.O.A.)	X	X
OPTIONS		
15,000 BTU A/C	X	X
Push-button Power Tongue Jack	X	X
Push-button Power Stabilizer Jacks (27' & above)	X	X
Coleman Slide-Out Grill Station		
Hi-Output Grill (Select models)	X	X
24" or 32" LED TV (Most models)	X	X
Stow-N-Go Storage Door (Select models)	X	X
Freedom Camp Kitchen (Select models)	X	X
Hide-A-Bed Sofa (Most Deep Slide models)	X	X
Rocker Recliners	N/A	X
Free-Standing Dinette w/4 Chairs (Deep Slide only)	X	X
Liberty/ Maple Leaf Edition Luxury Upgrade (DS only- description below)	N/A	X
Electric Queen Track Bed	TH	TH
Canadian compliance	X	X

Freedom Express Packages

	FE	LE
LIBERTY/MAPLE LEAF EDITION	N/A	X

- Raised Panel Cierra Cherry Glazed Maple Doors
- Raised Panel Refer Inserts
- Solid Surface Kitchen Countertop with Undermount Sink
- Hinged Door, Slider Door, and Pots and Pans Drawer Under Dinette
- Three Upgrade Décors - Caramel, Latte, Onyx
- Porcelain Toilet with Foot Flush
- Kitchen Feature Wall/Backsplash
- Central Control Panel for Switches and Gauges
- Congoleum Designer Carefree Premium Floorcovering
- 32" LCD TV
- Freedom Sky View Window with Pleated Shade and Hi-Intensity Puck Lights over Dinette
- Sconce Light in Slide Out
- LED Accent Lights in Kitchen
- Painted Fiberglass Cap with LED Hitch and Marker Lights
- Special Liberty/Maple Leaf Edition Graphics with Charcoal Skirt Metal
- Slam Latch Baggage Doors on Pass Through Storage
- Enclosed and Heated Gate Valves
- Camp Side Security Light
- Black Tank Flush System
- Outside RG6 TV Hookup

	FE/DS	N/A	X
PREMIUM PACKAGE (FE/DS)			X

- 26" Electric Fireplace
- Large 8 Cu. Ft. Refrigerator
- Trimmed Ceiling Tray with LED Rope Lighting
- Energy Efficient LED Lighting over Dinette
- Sink Covers

	FE	LE
FREEDOM VALUE PACKAGE	X	X

- Aluminum Wheels
- Power Awning
- AM/FM/CD/DVD
- 4 Interior, 2 Exterior Speakers
- Skylight
- Stonecast Sink
- Night Shades in the Living Area
- Metal Skirting
- Color Matched Fenders
- Folding Entry Assist Handle
- Ducted Ceiling Air Conditioning (27' & above)
- Heated Enclosed 32/34 Holding Tanks (27' & above)
- 49 Gallon Fresh Water Holding Tank (27' & above)
- Spread Axle Design (27' & above)

	X	X
EXPRESS PACKAGE		

- 6 Gallon Gas/Electric DSI Hot Water Heater
- Tinted Safety Glass Windows
- TV Antenna with Booster
- Exterior Shower Station
- Spare Tire Kit
- Front Diamond Plate
- EZ Lube Axles
- RVIA
- Congoleum Flooring
- Mortise & Tenon Cabinet Doors
- Microwave
- Oven with 3 Burner Cooktop
- 6 Cu. Ft. Two Door Refrigerator
- Ducted Furnace (27' & above)
- Silverware Drawer
- Evergreen Queen Mattress (Select models)

Standard Decor



Greystone



Garnet



Copper

Liberty Edition Decor Upgrade



Latte



Caramel



Onyx

Freedom Express – The Ultimate in Towability



Freedom Camp Kitchen

Standard on 320 BHDS; Optional on 291 QBS, 292 BHDS and 310 BHDS.

Lightweight

- ▼ Laminated sidewalls and floor
- ▼ Azdel behind the walls
- ▼ Bow trusses aluminum and wood
- ▼ Rod & angle crossmembers in frame
- ▼ All tanks mounted under floor to lower center of gravity and improve interior storage

Stable-Ryd® Suspension

- ▼ Spread axle improves weight distribution.
- ▼ Wide track axles provide a wider, more secure stance on the road.
- ▼ Spread axle design allows us to reduce the tongue weight for optimum towing performance.



Aerodynamic

- ▼ Aerodynamic front profile (Cuts through the air)
- ▼ Enclosed underbelly (Reduced turbulence/drag)

FREEDOM Freedom Express TO EXPLORE

ULTRA LIGHT TRAVEL TRAILERS • DEEP SLIDES • TOY HAULERS • EXPANDABLES



**Freedom Express has
Won the Annual DSI
Quality Circle Award –
Two Years in a Row!**



Travel Easy™ Roadside Assistance

RVing is easier with Coachmen's Travel Easy™ Roadside Assistance provided FREE the first year of ownership to those who purchase a New Coachmen RV. Administered by Coach-Net, this service provides you with 24/7 operational, technical and emergency road service coverage. Also included is towing, fuel delivery, jump starts, lockout service, tire changes, mobile mechanic and unlimited technical assistance. Anywhere. Anytime. Travel Easy™ is the security of knowing that help is an easy phone call away.



Big benefits for new owners – FREE One Year Membership in the Coachmen Owners Association!

Coachmen is proud to sponsor the largest manufacturer sponsored camping club in North America...Coachmen Owners' Association (COA). COA provides you a world of ways to enjoy your RV. This is FUN ON OVERDRIVE and provides: Free Trip Routing, Exciting Tours & Rallies, Free Campground Directory, Local/State Club Activities, Easy RVing Magazine Free, Theme Park Discounts, Fuel Discounts, Free onebigplanet® Memberships with discounts at 180,000 merchants and Much More! Every new Coachmen RV buyer is eligible for a 1 Year FREE membership in the Coachmen Owners' Association. It all adds up to an easy ownership experience!



A division of Forest River, Inc.

423 N. Main Street ▼ P.O. Box 30 ▼ Middlebury, IN 46540

To learn more about Coachmen RV and our products and see how Coachmen is making the easy life easier, visit www.coachmenrv.com or call 1.800.353.7383.



Forest River, Inc. encourages our customers to purchase their Forest River products from a local dealership whenever possible for the following reasons:

- 1) Forest River, Inc. dealers are independently owned and operated businesses so priority service and scheduling is at their discretion and is often provided to customers that purchased their unit at that dealership.
- 2) Purchasing locally allows customers to establish meaningful relationships with a dealer, enhancing the RV experience through assistance with product questions, user tips or RV regulations for your state or country, and much more!
- 3) Canadian customers must meet requirements to bring an RV purchased out of the country to their home. These requirements may involve additional inspections and certifications, taxes and fees. Your local Canadian Dealer is a professional at meeting these requirements.
- 4) Scheduling timely warranty repairs and adjustments through a local dealership provides far greater flexibility and convenience to you, the customer!

It is the goal of Forest River, Inc. that all of our RV owners fully enjoy the RV experience and that customer satisfaction meets or exceeds their expectations!



Your Freedom Express Dealer



Learn More
Scan this barcode using a QR Reader on your smart phone to learn more about Forest River.



A Berkshire Hathaway company.

All illustrations and specifications contained in this literature are based on the latest product information at the time of publication. Forest River, Inc. reserves the right to make changes in prices, colors, materials, equipment and specifications at anytime, without notice, and assumes no responsibility for any error in this literature. All units are shipped F.O.B. point of manufacture. ©Forest River, Inc. 2012 Freedom Express 11/12