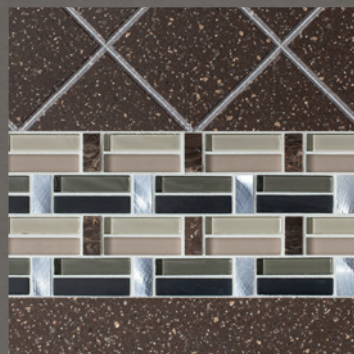




2014
**VENTANA LE
& VENTANA**
Diesel Motor Coach



NEWMAR • 2014 VENTANA LE &
2014 VENTANA



WHEN YOU KNOW THE DIFFERENCE SM

2014
Ventana LE



Ventana LE Exterior

Floor plan #3850 in Garnet Décor Exterior



Your dreams are now within reach.

Ventana LE makes the dream of owning a Newmar diesel coach a reality. It has everything you need for every adventure to come. All-new graphics and design detailing, protected by Newmar's Full-Paint Masterpiece™ Finish. A cleaner, greener 340HP Cummins® ISB engine. And the smooth ride that's a hallmark of a Freightliner® Chassis.

For the first time, Ventana LE adds Newmar's exclusive Comfort Drive™ Steering to its growing list of high performance extras. The road ahead has never looked better.



Comfort Drive
STEERING



Features at a glance:

- Full-Paint Masterpiece™ Finish with front protective film
- Comfort Drive™ steering with adjustable control
- Freightliner® Custom Chassis with 340HP Cummins ISB Engine
- 6.0 kW Cummins Onan® Diesel Quiet Series Generator



Driven By You

Freightliner Custom Chassis are renowned for their exceptional ride and handling, tight turning radius and extraordinary dependability.



Ventana LE Interior

Floor plan #3850 with Garnet Décor Style and Empire Maple Cabinetry – New, Vast, Unique.

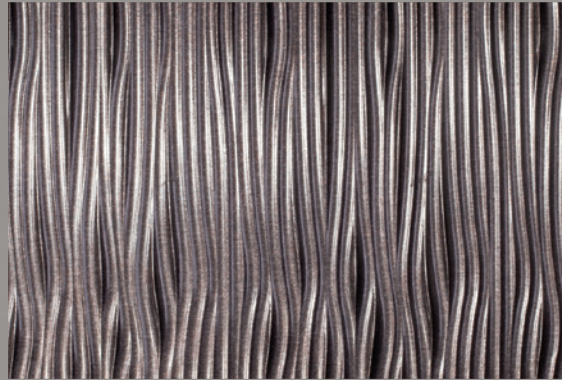
Awe inspiring. All encompassing.

Step into the great wide open of the 2014 Ventana LE. The spacious interior is new—literally—from top to bottom, with a stylishly original ceiling treatment that eliminates exposed vents and luxury vinyl tile that extends the breadth of the space.

And what a space it is. The living area includes residential quality amenities and adjoins an L-shaped kitchen that features fine furniture cabinetry with a fully sculpted base, solid surface counters, a new textured metal backsplash and an extendable dinette that seats four.

Features at a glance:

- Glazed unitized cabinets
- Polished solid surface kitchen countertop with stainless steel sink
- Flexsteel® Delux leather sofa
- Sony® Surround Sound System with subwoofer*



*Optional

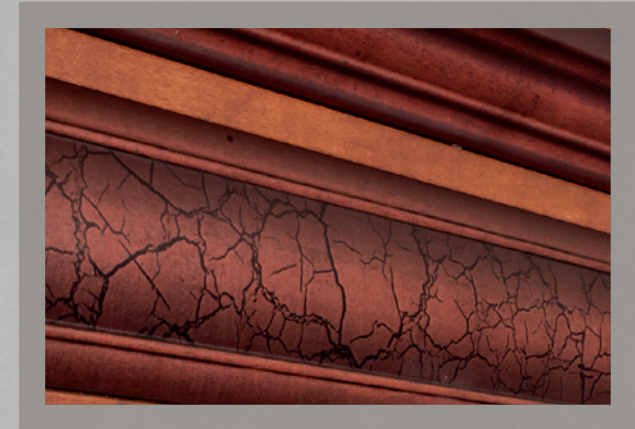
End each day in restful style.

Crafted for ultimate comfort, Ventana LE's sleeping quarters feature a queen size bed with a hardwood frame accented by a faux leather headboard and a sumptuous bedspread ensemble. Storage abounds thanks to overhead cabinetry and a full wardrobe.

Decorative wood crackle molding adds an elegant touch to a space designed with great views in mind, whether from the window with day/night shades or the 32" LED TV/DVD system.

Features at a glance:

- LED TV in living and bedroom areas
- Smooth-top queen mattress with quilted bedspread, bed scarf and accent pillows
- Luxury vinyl tile floor in kitchen, bathroom and living area
- Laminate countertop on nightstands, dressers and chest of drawers
- Sony® LED TV



Sleep in a den of luxury. ►
From bedclothes to mattress to wall detail, Ventana LE's quarters are five-star quality.





Practical touches, hand-crafted with care.

The Ventana LE bathroom effortlessly combines form with function, whether in the handy shower, the multitude of storage options, or the ingenious new pivot-entry door for easy half-bath access even when the coach is in motion.

Features at a glance:

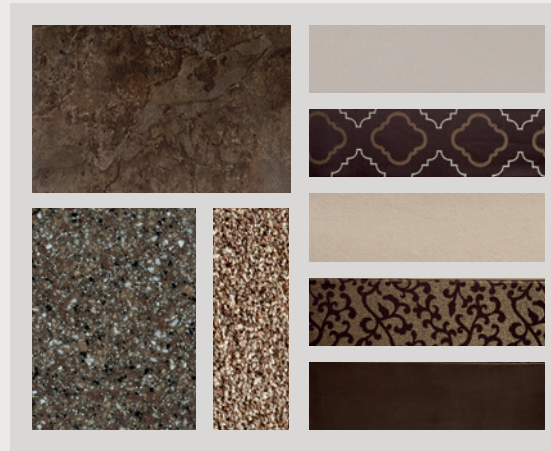
- Shower with glass door
- Pullout bathroom step-stool with storage
- Newmar-designed pivot-ease half-bath door

VENTANA LE EXTERIOR DECOR

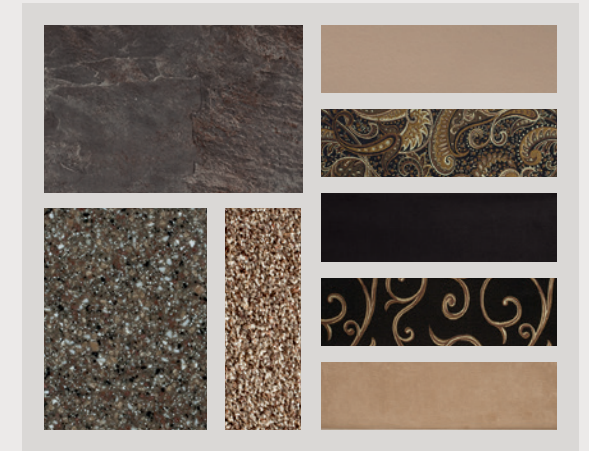


Ashbrook Exterior

VENTANA LE INTERIOR DECOR



Quartz Interior



Garnet Interior

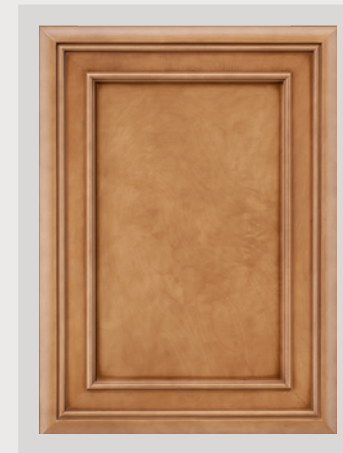
WOOD OPTIONS



Sandhill Exterior



Bisque Maple

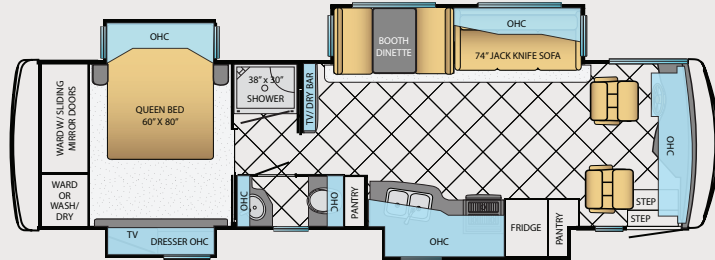


Sienna Maple

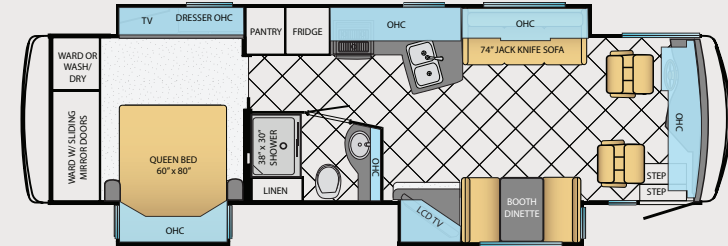


Empire Maple

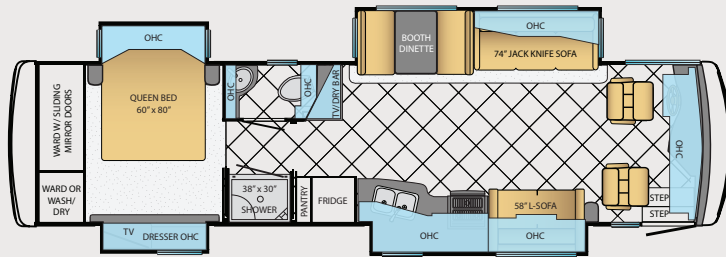
VENTANA LE FLOOR PLANS



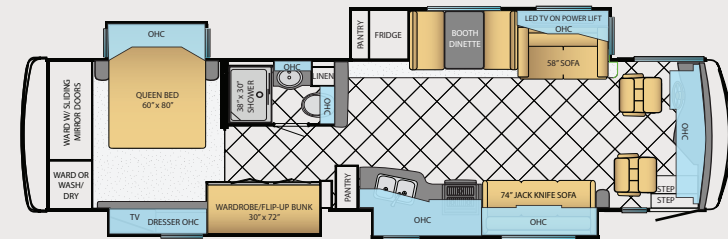
3433



3436



3634

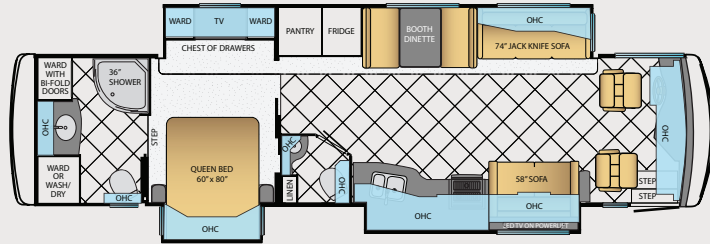


3845

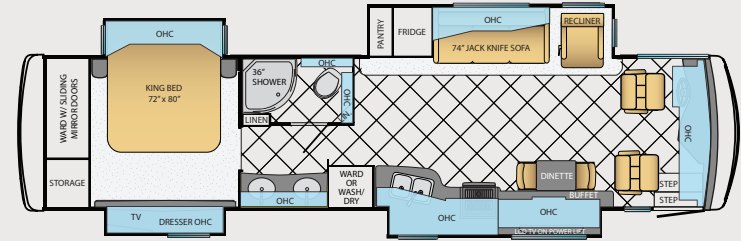
FLOOR PLAN SPECIFICATIONS

Floor Plan	App. Overall Length	Width	App. Overall Height	Interior Width	Interior Height	Grey Tank	Sewage Tank	Water Tank	Propane Tank	Furnace
3433	34'10"	101.5"	12'8"	95.5"	84"	65 gal.	45 gal.	105 gal.	32 gal.	54,000 btu
3436	34'10"	101.5"	12'8"	95.5"	84"	65 gal.	45 gal.	105 gal.	32 gal.	35,000 btu
3634	36'8"	101.5"	12'8"	95.5"	84"	65 gal.	45 gal.	105 gal.	32 gal.	54,000 btu
3845	38'8"	101.5"	12'8"	95.5"	84"	65 gal.	45 gal.	105 gal.	32 gal.	54,000 btu

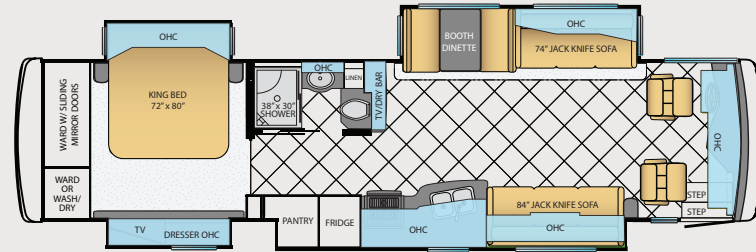
VENTANA LE FLOOR PLANS



3847



3849



3850

FLOOR PLAN SPECIFICATIONS

Floor Plan	App. Overall Length	Width	App. Overall Height	Interior Width	Interior Height	Grey Tank	Sewage Tank	Water Tank	Propane Tank	Furnace
3847	38'8"	101.5"	12'8"	95.5"	84"	65 gal.	45 gal.	105 gal.	32 gal.	54,000 btu
3849	38'8"	101.5"	12'8"	95.5"	84"	65 gal.	45 gal.	105 gal.	32 gal.	54,000 btu
3850	38'8"	101.5"	12'8"	95.5"	84"	65 gal.	45 gal.	105 gal.	32 gal.	54,000 btu

VENTANA LE FEATURES & OPTIONS



Chassis Features

Built specifically for Newmar with the highest quality in handling, safety, performance, and dependability.

Freightliner® XCR Chassis with 340Hp Cummins ISB Engine
Chrome Wheel Simulators
Hydraulic Leveling Jacks
Comfort Drive Steering System with Power Column and Adjustable Control
Cruise Control
Manual Tilt and Telescope Steering Column with VIP Smart Wheel
Recessed Fuel Fills with Crossover to Fill from Either Side
Anti-Lock Braking System



Air Conditioning & Heating

Total Comfort Air Conditioning and Heating systems make climate control simple and effective.

Two 13.5M Penguin™ Heat Pump Central Air Conditioners
Propane Furnace with Ducted Heat
Dash Heater & High-Output Air Conditioner
Propane Leak Detector
Wall Mounted Sensors for Heating and Air Conditioning
Driver/Passenger Overhead Dash Fans

OPTIONS

Two 15M Penguin™ Heat Pump Central Air Conditioners & Energy Management System



Appliances

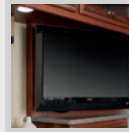
All of the amenities of a fine home are integrated in the Newmar design, in both form and capabilities.

30" Over the Range Microwave Oven
Three-burner Cooktop with Oven Door
Norcold® 10 Cu. Ft. Refrigerator
Black Panel Refrigerator Front
10 gal. Gas/Electric Water Heater with Direct-Spark Ignition*
One-Piece Compact Washer/Dryer Prep *

OPTIONS

Norcold® 12 Cu. Ft. Four-Door Refrigerator with Icemaker*
Maytag Residential Refrigerator with Icemaker and Water Dispenser, includes 2000 Watt Pure Sine Inverter with Two Extra Batteries*
GE® 19.5 Cf Refrigerator with Icemaker, 2000 Watt Inverter with Six-6 Volt Batteries
30" Convection Microwave Oven with Three Burner Cooktop

Icemaker Added to Refrigerator *
Whirlpool® Two Piece Stacked Washer & Dryer
Compact One-Piece Washer/Dryer *
Air Horns



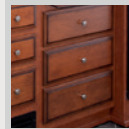
Audio, Video & Accesories

Stay entertained on the road and off, with spectacular visual and sound options from industry leaders.

LED TV in Living and Bedroom Areas, TV Sizes Vary per Floorplan*
Rearview Color Monitor System with Audio
Side View Cameras Displayed Onto Rear View Monitor Screen
DVD Player in Bedroom
TV Antenna with Power Booster
Video Selector Switch
Satellite Prep

OPTIONS

32" LED TV in Front Overhead*
Automatic Satellite without Receiver
Sony® Surround Sound System with Sub-Woofer
11" Flip-down LCD TV and DVD Player with Headphones at Each Bunk*



Cabinets & Furniture

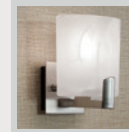
Amish craftsmanship and elegance in design meld the wood cabinetry and furniture seamlessly with the Newmar interior.

Empire Maple Mitered Designer Glazed Cabinet Doors
Concealed Hinges on Cabinet Doors
Drawers with Full Extension Guides
Fixed Pantry Shelves
Polished Solid Surface Countertop in Kitchen with Stainless Steel Sink
Laminate Countertop on Nightstands, Dressers and Chest of Drawers
Flexsteel® Delux Leather Sofa and Driver/Passenger Seats
Smooth-Top Mattress
Lifts on Bed Top to Access Storage Area*
Front Seats with 6 Way Power
Passenger Seat Work Station

OPTIONS

Sienna Maple Cabinets
Bisque Maple Cabinets
Plush Pillow Top Mattress
Hide-A-Bed Sofa with Air Mattress*

Sleep Number Deluxe® Air Mattress
Extenda L Sofa on Off Door Side
Power Incline Adjustable Bed Base, Sleep Number Deluxe® Air Mattress with Window & Cabinet Changes



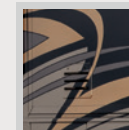
Electrical Features

A Newmar coach's electrical and lighting system is designed for maximum reliability, functionality, and style.

6.0 kW Cummins Onan® Diesel Quiet Series Generator
50 Amp Electrical Service with Flexible Cord
Four 6 Volt House Batteries on Pullout Tray
Battery Disconnect Switch
110 Volt Exterior Receptacle
1200 Watt Inverter
Emergency Start Switch
Exterior Security Light on Doorside
Midship Side Turn Signals
Halogen Lights Recessed in Ceiling and Overhead Cabinets
Manually Operated Hold-To-Run Slideout Switch
ICC Light Flasher Switch
12 Volt Auxiliary Receptacle on Dashboard
Recept with Built in USB Charger at Dinette and Bedroom Dresser Cabinet
Engine Block Heater
Exterior TV Jack
Lights in Exterior Storage Compartments
Interior Courtesy Lights

OPTIONS

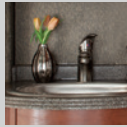
8.0 Kw Onan® Diesel Quite Series Generator
LED Lighting in Place of Halogen



Exterior Features

The Full-Paint Masterpiece Finish is one of the most beautiful and durable in the industry, with the goal of a perfect finish, every time.

Full-Paint Masterpiece™ Finish with Front Protective Film
Convex Exterior Mirrors with Remote Control and Defrost
Entrance Door with Automatic Step
Lighted Exterior Storage Compartments with Cargo Liner
Assist Handle at Entrance Door
Mud Flaps
Rear Ladder
Rear Hitch for Towing Car
Undercoating



Plumbing & Bath Features

The Demand Water System's residential flow response ensures that the comfort and reliability of home are never far away.

- _____ Demand Water System with SHURflo® Pump
- _____ Sewage Holding-Tank Rinse
- _____ Water Heater Bypass System*
- _____ Dometic Traveler China Bowl Stool or Macerator Stool*
- _____ Monitor Panel
- _____ Fiberglass Shower with Glass Door*
- _____ Exterior Shower
- _____ Water Filter for Entire Unit



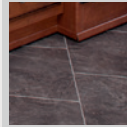
Construction Features

From the chassis on up, Newmar coaches are built to be dependable, durable, comfortable, and beautiful.

- _____ BriteTEK™ Roof with Walkable Decking
- _____ Gelcoated Fiberglass Exterior Sidewalls, Front and Rear Caps
- _____ Aluminum-Frame Sidewalls & Roof Construction, 16" on Center
- _____ 5/8" Foam Insulation Laminated in Sidewalls & Ceiling

OPTIONS

- _____ One Piece Molded Fiberglass Roof



Interior Features

Flooring – both tile and carpet – is installed with Newmar's own in-house process, ensuring the best in quality and longevity, as well as the finest fit.

- _____ Dash Panel Color Coordinated ABS
- _____ Front Entrance Door with Power Stepwell Cover
- _____ Interior Assist Handle at Main Entry Door
- _____ Inlayed Six Panel Design Interior Passage Doors
- _____ Decorative Wall Art
- _____ Padded Vinyl Ceiling
- _____ Day/Night Pleated Window Shades & Lambrequins
- _____ Mini Blinds in Kitchen and Bathroom
- _____ Vinyl Tile Floor in Kitchen, Bathroom and Living Area
- _____ Carpet on Slideout Floors
- _____ MCD Power Shades at Windshield and Manual Shades on Driver/Passenger Side Windows
- _____ Quilted Bedspread with Shams, Bed Scarf and Accent Pillows
- _____ 10 Bc Fire Extinguisher, Smoke Detector and Carbon Monoxide Detector

OPTIONS

- _____ Vinyl Floor Extended into Bedroom Area
- _____ MCD Window Shades



Windows, Vents & Awnings

Experience as much – or as little – of the outdoors as you want in comfort and style.

- _____ One Piece Tinted Windshield
- _____ Single-Pane Tinted Safety-Glass Windows
- _____ Power Vent in Kitchen and Bathroom
- _____ Shower Skylight
- _____ Dometic® Oasis Manual Front Entrance Door Awning
- _____ Dometic® Slideout Awning Covers

OPTIONS

- _____ Dometic® Weather Pro Side Awning & Oasis Power Front Entrance Door Awning
- _____ Bunk Windows
- _____ Double Pane Tinted Safety Glass Windows*
- _____ Fantastic® Vent with Rain Sensor in Kitchen and Bathroom

ROOF R-VALUE = 19

- _____ a. BriteTEK™ Roof (optional one-piece fiberglass roof)
- _____ b. 9mm Wood Decking
- _____ c. Fiberglass Batten Insulation
- _____ d. A/C Ducting
- _____ e. Aluminum Roof Truss
- _____ f. Kraft Paper Vapor Barrier
- _____ g. 58" Bead Foam
- _____ h. 3/16" Panel
- _____ i. Padded Vinyl Overlay

SIDEWALL R-VALUE = 11

- _____ j. 3/16" Plywood Interior Wall
- _____ k. 58" Bead Foam
- _____ l. Kraft Paper Vapor Barrier
- _____ m. Fiberglass Batten Insulation
- _____ n. 3/16" Plywood Exterior Wall
- _____ o. Composite One-Piece Gel Coat Exterior Sidewall
- _____ p. 16" On Center Aluminum Framing with 3 1/2" Header

FLOOR R-VALUE = 16

- _____ q. Carpet/Tile
- _____ r. Carpet Padding
- _____ s. 5/8" Floor Decking
- _____ t. Fiberglass Batten Insulation
- _____ u. 2" x 3" Wood Framing
- _____ v. Polyethylene Moisture Barrier
- _____ w. Foam Panels for Noise Protection
- _____ x. Aluminum Ducting

BASEMENT R-VALUE = 4

- _____ y. Cargo Liner
- _____ z. 3/8" Floor Decking
- _____ aa. 3/16" Luan Panel
- _____ bb. 1 1/2" Bead Foam
- _____ cc. Aluminum Sheeting (Prevents Distortion)
- _____ 1. 13.5M Penguin™ Heat Pump Central Air Conditioners (2)
- _____ 2. One-Piece Windshield
- _____ 3. Coated Aluminum Wheels
- _____ 4. Double-Pane Tinted Safety Glass Windows
- _____ 5. Side-Hinged Baggage Doors w/ Optional Pullout Tray

VENTANA & LE CONSTRUCTION

Like a fine home, Ventana is framed 16 inches on center, allowing the best placement of outlets, switches and other components. Newmar uses only Sikaflex® elastic adhesive throughout Ventana's construction – one of the strongest bonding agents available. It seals against air and water and helps dampen sound and vibration. Electrical wiring holes in Ventana's aluminum frame are ringed with plastic grommets to protect wires from chafing. And Newmar's Total Comfort™ Central Air is two separate, fully ducted systems that distribute cool air and remove warm air.



*Check with dealership on floor plan availability and complete listing of features.



Ventana Exterior

Floor plan #4369 in Bayside Décor Exterior



2014 Ventana

Everything about
it is inviting.
Especially the price.

Prepare to reinvent your expectations of how much diesel power and performance you can afford. The 2014 Ventana combines Newmar's most asked-for high-end amenities into a single spectacular package of style and craftsmanship that will have you asking: is it possible to have too much of a good thing? Here's your chance to find out.



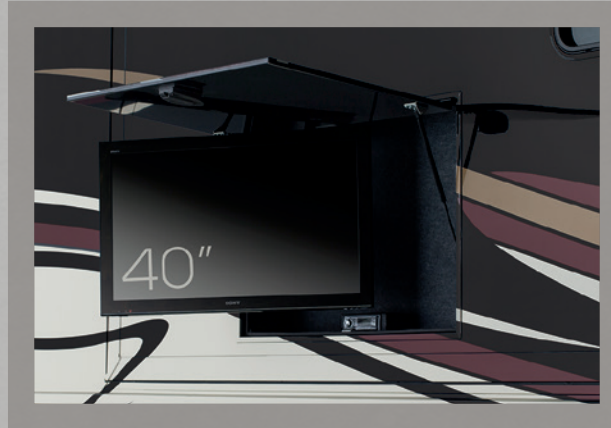
WHEN YOU KNOW THE DIFFERENCE SM


All you could want.



*Discover the Newmar Difference for less,
and lose nothing in the bargain.*

Convenience at every turn.



Inside and out, Ventana includes the extras you'd expect from Newmar. There's power to spare, with selected models offering a robust 400HP Cummins® ISL engine.* And Newmar's exclusive Comfort Drive™  Comfort Drive™ STEERING makes for effortless driving.

Convenience is the byword off the road as well. The Flexsteel® captain's chair includes a recliner footrest, while the passenger seat unveils a fold-out desk. When you add in features like easy access cargo slide-outs and a sidewall that reveals a 40" Sony® HDTV, it's clear Ventana is full of hidden talents.

Features at a glance:

- Full-Paint Masterpiece™ Finish with front protective film
- Comfort Drive™ Steering with adjustable control
- Freightliner® Chassis with 400HP Cummins ISL Engine on 40' and 43' floor plans
- 8.0 kW Cummins Onan® Diesel Quiet Series Generator



Driven By You

Freightliner Custom Chassis are renowned for their exceptional ride and handling, tight turning radius and extraordinary dependability.

*360HP ISB engine on 34' and 36' floor plans



Ventana Interior

*Floor plan #4369 with Bordeaux Décor Style and
Manhattan Maple Cabinetry -Elegant. Intimate. Serene.*

Surrounded by style.

Everywhere you look, Ventana greets you with high-end design and legendary craftsmanship. Solid wood glazed cabinet doors line the cabin, while the residential quality Flexsteel® sleeper sofa and lounge beckon you to relax and admire the stylish lighting sconces and wall art.

A few steps away, the kitchen area adds to the homelike feel with top-shelf appliances, solid surface counters accented by a handsome glass and marble backsplash, and an expandable four-person dinette.

Features at a glance:

- Manhattan Maple cabinets with designer mitered glazed doors
- Flexsteel® Ultralux leather furniture
- Porcelain tile floor in kitchen, bathroom and living area
- Sony® HDTV/DVD system



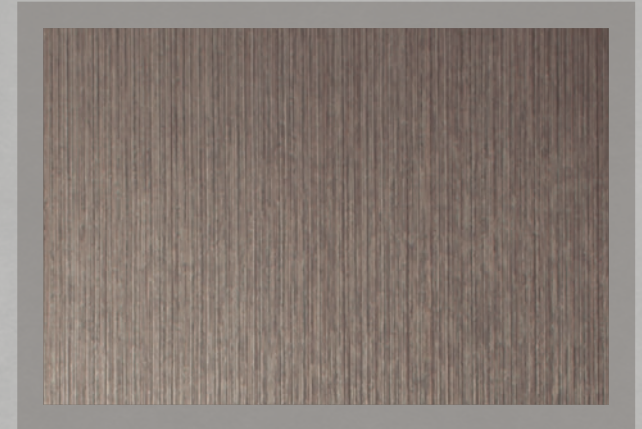
Seize the day. Savor the night.

Retiring to Ventana's well-appointed bedroom could be the best part of your day. You'll find lots of restful reasons to enjoy the king size bed with home style coverlet, as well as a faux leather headboard surrounded by a hardwood frame.

Above-bed storage is aided by high-end mini-wardrobe units that flank a Sony® HDTV with DVD system for entertainment long into the evening.

Features at a glance:

- King bed with quilted bedspread and accent pillow
- Porcelain tile floor in kitchen, bathroom and living area
- Sony® LED TV and DVD player in bedroom



Comfort in every inch ►
Ventana's quarters let you end a day of adventure in style.





Two for the road.

Ventana's master bath has double vanities (on select floor plans) for twice the convenience when prepping for the day ahead. Hardwood cabinetry and solid surface counters only add to the rich appeal.

Even more impressive and thoughtful: a new, larger shower enclosure with residential quality fixtures and a stunningly photo-realistic shower wall with the appearance of natural stone.

Features at a glance:

- Dual bathroom vanity sinks on select floor plans
- Solid surface shower with glass door
- One-piece washer/dryer
- Fold-down teak shower seat*
- New glass and marble backsplash

Left: Whether preparing for the day or for rest, shower in residential comfort. ►

Right: Cozy toilet includes dedicated vanity. ►

*Optional



VENTANA EXTERIOR DECOR



Bayside Exterior

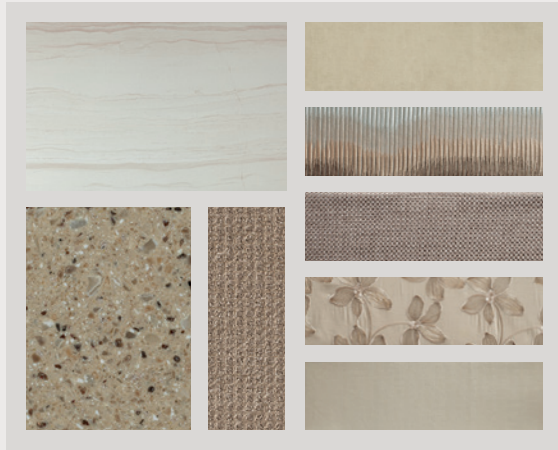


Island Exterior

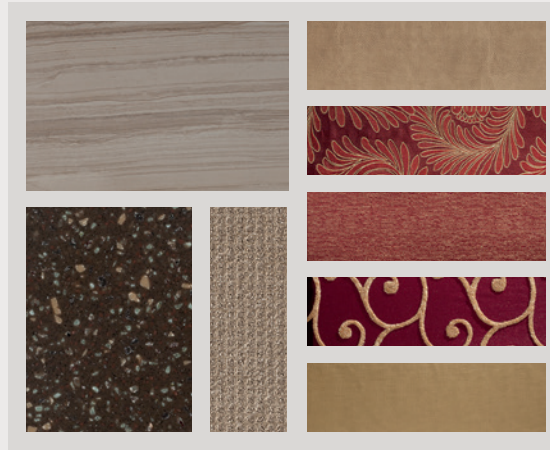


Surfside Exterior

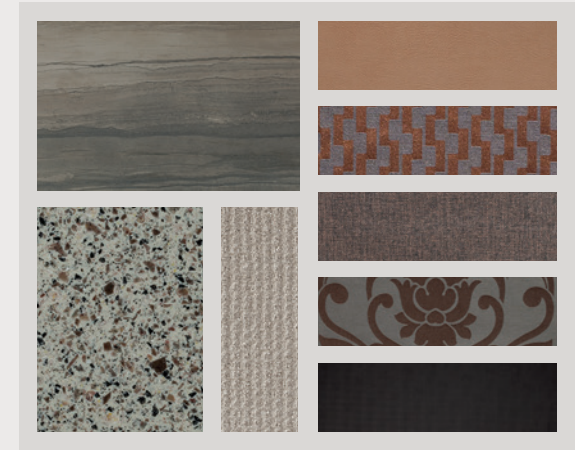
VENTANA INTERIOR DECOR



Chateaux Interior



Bordeaux Interior



Monterey Interior

WOOD OPTIONS



Bisque/Harvest Maple with
Glazed Doors

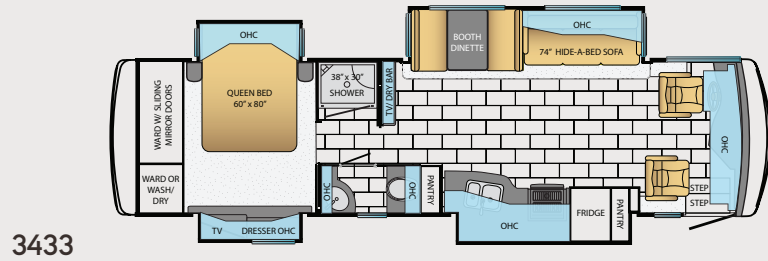


Sienna/Verona Maple with
Glazed Doors

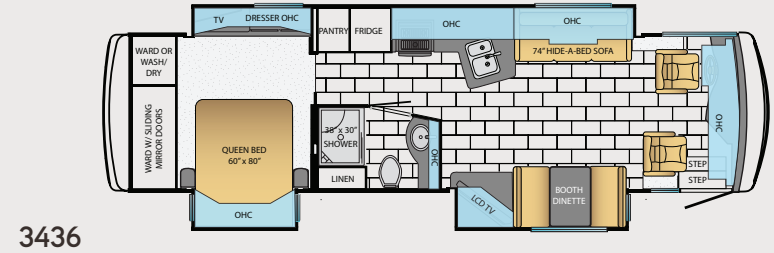


Empire/Manhattan Maple with
Glazed Doors

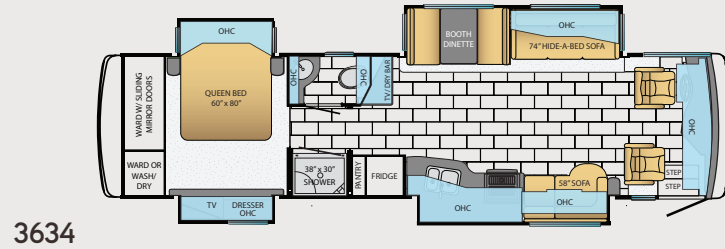
VENTANA FLOOR PLANS



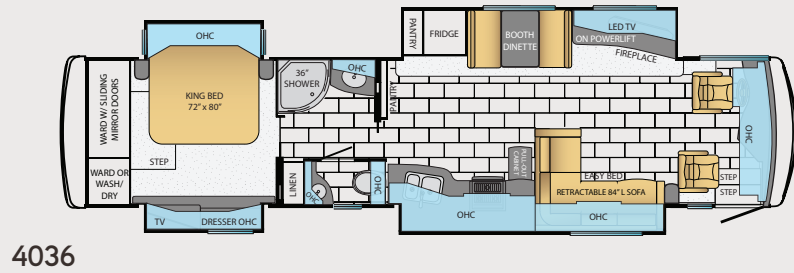
3433



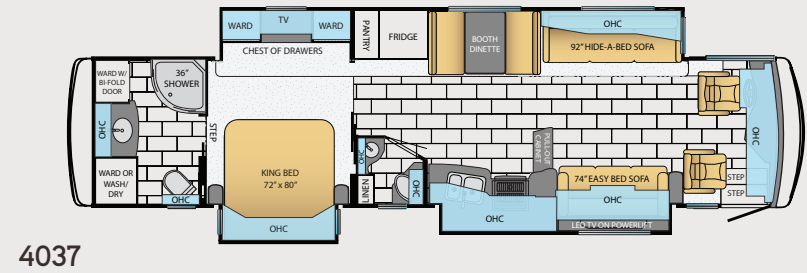
3436



3634



4036

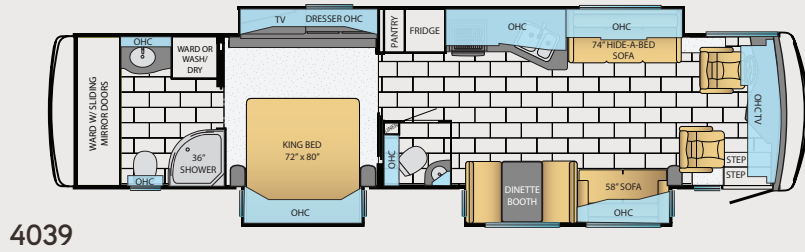


4037

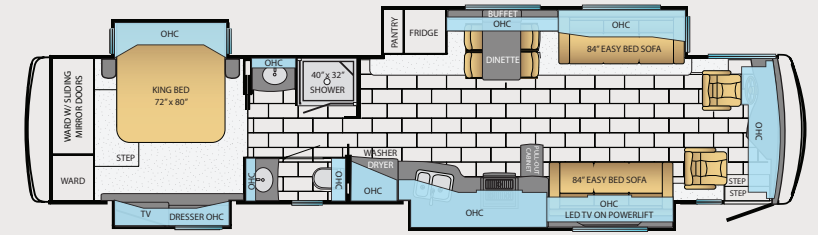
FLOOR PLAN SPECIFICATIONS

Floor Plan	App. Overall Length	Width	App. Overall Height	Interior Width	Interior Height	Grey Tank	Sewage Tank	Water Tank	Propane Tank	Furnace
3433	34' 10"	101.5"	12' 5"	95.5"	84"	65 gal.	45 gal.	105 gal.	32 gal.	54,000 btu
3436	34' 10"	101.5"	12' 5"	95.5"	84"	65 gal.	45 gal.	105 gal.	32 gal.	35,000 btu
3634	36' 8"	101.5"	12' 5"	95.5"	84"	65 gal.	45 gal.	105 gal.	32 gal.	54,000 btu
4036	40' 10"	101.5"	12' 8"	95.5"	84"	65 gal.	45 gal.	105 gal.	32 gal.	54,000 btu
4037	40' 10"	101.5"	12' 8"	95.5"	84"	65 gal.	45 gal.	105 gal.	32 gal.	54,000 btu

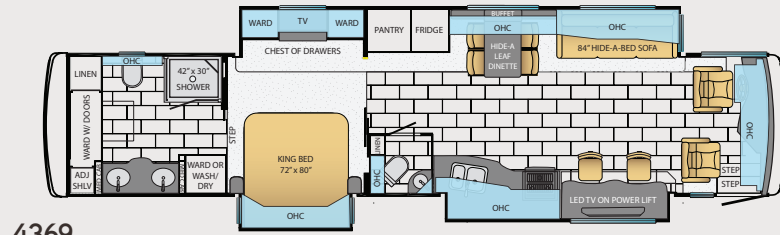
VENTANA FLOOR PLANS



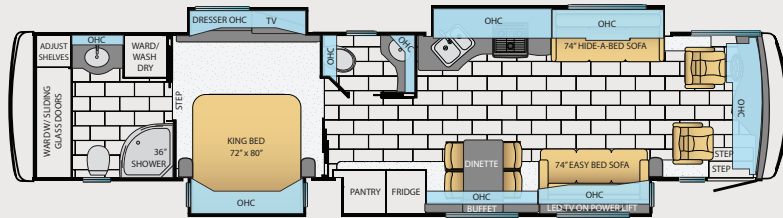
4039



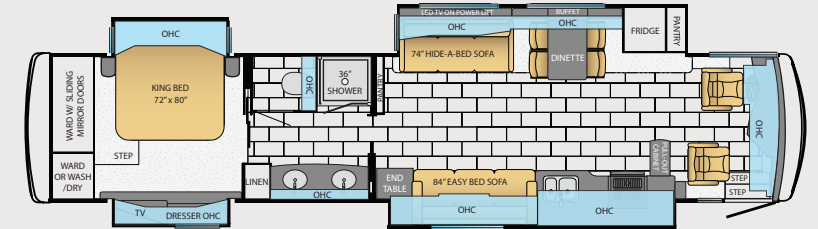
4360



4369



4373



4377

FLOOR PLAN SPECIFICATIONS

Floor Plan	App. Overall Length	Width	App. Overall Height	Interior Width	Interior Height	Grey Tank	Sewage Tank	Water Tank	Propane Tank	Furnace
4039	40' 10"	101.5"	12' 8"	95.5"	84"	65 gal.	45 gal.	105 gal.	32 gal.	54,000 btu
4360	43' 10"	101.5"	12' 8"	95.5"	84"	65 gal.	45 gal.	105 gal.	32 gal.	50,000 btu
4369	43' 10"	101.5"	12' 8"	95.5"	84"	65 gal.	45 gal.	105 gal.	32 gal.	50,000 btu
4373	43' 10"	101.5"	12' 8"	95.5"	84"	65 gal.	45 gal.	105 gal.	32 gal.	50,000 btu
4377	43' 10"	101.5"	12' 8"	95.5"	84"	65 gal.	45 gal.	105 gal.	32 gal.	50,000 btu

VENTANA FEATURES & OPTIONS



Chassis Features

Built specifically for Newmar with the highest quality in handling, safety, performance, and dependability.

Freightliner® Tag Axle XCR Chassis with 400Hp Cummins ISL Engine on 40'-43' Floorplans

Freightliner® XCR Chassis with 360Hp Cummins ISB Engine on 34'-36' Floorplans
Accu-Shield™ Aluminum Wheels with Trim Kit

Hydraulic Leveling Jacks

Cruise Control

Comfort Drive™ Steering With Adjustable Control

Manual Tilt and Telescope Steering Column with VIP Smart Wheel

Recessed Fuel Fills with Crossover to Fill from Either Side

Back-Up Alarm

Anti-Lock Braking System

10 gal. Gas/Electric Water Heater with Direct-Spark Ignition*

One-Piece Compact Washer/Dryer Prep *

Fireplace in Living Area*

OPTIONS

Norcold® 12 Cu. Ft. Four-Door Refrigerator with Icemaker*

Maytag® Residential Refrigerator with Icemaker and Water Dispenser, includes 2000 Watt Pure Sine Inverter & Six 6-Volt Batteries

Maytag® All Electric Refrigerator, 2-Burner Cooktop, Eight 6-Volt Batteries and 2800 Watt Inverter

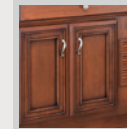
Maytag® All Electric Refrigerator, 2-Burner Cooktop, Eight 6-Volt Batteries and 2800 Watt Inverter, Hydronic Heat

GE® All Electric Refrigerator, 2-Burner Cooktop, Eight 6-Volt Batteries and 2800 Watt Inverter, Hydronic Heat

One-Piece Washer/Dryer *

Whirlpool® Two-Piece Washer/Dryer*

Central Vacuum with Deluxe Tool Kit



Cabinets & Furniture

Amish craftsmanship and elegance in design meld the wood cabinetry and furniture seamlessly with the Newmar interior.

Empire Maple Cabinets with Mitered Designer Glazed Doors

Concealed Hinges on Cabinet Doors

Polished Solid Surface Countertop in Kitchen with Undermounted Stainless Steel Sink
Lifts on Bed Top

Passenger Seat Work Station

Polished Solid Surface Countertop in Bathroom with Integrated Sink

Polished Solid Surface Countertops on Nightstands and Chest of Drawers

Adjustable Pullout Pantry Shelves*

Residential Style Full Extension Ball Bearing Drawer Guides

Flexsteel® Ultralux Leather Sofa and Driver/Passenger Seats

Driver/Passenger Seats with Six-Way Power, Power Lumbar, Ergo-Flex Arms

Plush Pillow Top Mattress

OPTIONS

Queen Bed

Sienna Maple Cabinets

Bisque Maple Cabinets

Verona Maple Cabinets with Raised Panel Glazed Doors

Manhattan Maple Cabinets with Raised Panel Glazed Doors

Harvest Maple Cabinets with Raised Panel Glazed Doors

Hidden Leaf Dinette Table With Four Chairs and Larger Dinette Window*

Sleep Number Deluxe® Air Mattress

Combination Desk with Buffet Table Two Fixed Chairs and Two Folding Chairs

Combination Desk/Dinette with Free Standing Hidden Leaf Table, Two Fixed and Two Folding Chairs

Combination Desk/Dinette with Buffet Table, Two Fixed and Two Folding Chairs

Combination Desk/Dinette with Roll Away Table, Two Fixed and Two Folding Chairs

Combination Desk/Dinette with Free Standing Hidden Leaf Table, Two Fixed and Two Folding Chairs

Flexsteel Leather Recliners, End Table and Fold & Tumble Sofa with Televator TV*

Flexsteel Leather Recliners, Fireplace and Extenda L Sofa with Televator TV*

Power Bed/Sofa Base with Sleep Number® Premier Air Mattress

Extenda L Sofa on Off Door Side

Easy Bed Sofa in Place of Bar on Door Side

Fold & Tumble Sofa with Air Mattress on Door Side*



Air Conditioning & Heating

Total Comfort Air Conditioning and Hydronic Zone Heating systems make climate control simple and effective.

Two 13.5M Penguin™ Heat Pump Central Air Conditioners

Propane Furnace with Ducted Heat on 34'-40' Floorplans

Hydronic Zone Heating System with Continuous Hot Water on 43' Floorplans

Dash Heater & High-Output Air Conditioner

Driver & Passenger Dash Overhead Ventilation System

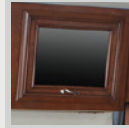
Propane Leak Detector

Wall Mounted Sensors for Heating and Air Conditioning

OPTIONS

2-15M Penguin Heat Pump Air Conditioners in Place of Standard Hydronic Zone Propane Heating System*

3-15M Penguin Heat Pump Air Conditioner and Energy Management System*



Audio, Video & Accesories

Stay entertained on the road and off, with spectacular visual and sound options from industry leaders.

Sony® LED TV and DVD Player in Living and Bedroom Areas* (TV Sizes Vary Per Floorplan)

Sony 46" LED TV on Televator in Living Area*

AM/FM Dash Radio with CD Player and Auxiliary Jack

Sony® Surround Sound System with Sub-Woofer

Rearview Color Monitor System with Audio

Side View Cameras

Roof Mounted Digital TV Antenna with Power Booster

Satellite Dish Prep

Two Bedroom Radio Speakers

Video Selector Switch

OPTIONS

Sirius Satellite Radio Capability (Does not include monthly subscription)

Sony® 32" LCD TV in Front Overhead*

Sony® 46" LED TV on Televator Behind Door Side Sofa

Exterior Entertainment Center in Sidewall with Sony® 40" LCD TV*

Exterior Entertainment Center in Storage Compartment with Sony® 32" LCD TV*

Automatic Satellite without Receiver

In-Motion Satellite without Receiver

High Definition Wiring

Universal Remote Control

Dash Radio/CD Player with Portable Tom Tom® Navigation System



Appliances

All of the amenities of a fine home are integrated in the Newmar design, in both form and capabilities.

30" Convection Microwave Oven

Three-burner Cooktop with Piezzo Ignition

Solid Surface Range Cover

Norcold® 10 Cu. Ft. Refrigerator

Brushed Aluminum Refrigerator Front



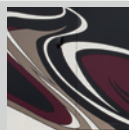
Electrical Features

A Newmar coach's electrical and lighting system is designed for maximum reliability, functionality, and style.

- 8.0 kW Cummins Onan® Diesel Quiet Series Generator
- 50 Amp Electrical Service with Flexible Cord
- Four 6-Volt House Batteries on Pullout Tray
- Four 12-Volt House Batteries on Pullout Tray
- Battery Disconnect Switch
- 110 Volt Exterior Receptacle
- 5 Watt Solar Panel
- 2000 Watt Inverter
- 12 Volt Auxiliary Receptacle on Dashboard
- Emergency Start Switch
- Engine Block Heater
- Exterior Security Light on Doorside
- Midship Side Turn Signals
- Halogen Lights Recessed in Ceiling and Overhead Cabinets
- Accent Lights in Slideout Fascia Trim
- Manually Operated Hold-To-Run Slideout Switch
- ICC Light Flasher Switch
- Exterior TV Jack
- Interior Courtesy Lights
- Lights in Exterior Storage Compartments, Controlled by an Interior Switch
- Recept with Built in USB Charger at Dinette and Bedroom Dresser Cabinet

OPTIONS

- Energy Management System
- LED Lights in Place of Halogen
- Power Rewind Reel with 50' Cord
- Power Rewind Reel with 34' Cord
- Automatic Generator Start on Low Battery or Temperature Setting



Exterior Features

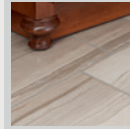
The Full-Paint Masterpiece Finish is one of the most beautiful and durable in the industry, with the goal of a perfect finish, every time.

- Full-Paint Masterpiece™ Finish with Front Protective Film
- Convex Exterior Mirrors with Remote Control, Defrost and Turn Signals
- Entrance Door with Automatic Double Step
- Lighted Exterior Storage Compartments with Cargo Liner
- Rear Hitch for Towing Car with Two Extra 14 Gauge Wires
- Assist Handle at Entrance Door
- Mud Flaps

- Rear Protective Full-width Tow Guard
- Rear Ladder
- Undercoating

OPTIONS

- Large Chrome Exterior Mirrors
- Large Storage Tray with Access from One Side or Either Side *
- Large Storage Tray



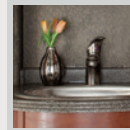
Interior Features

Flooring – both tile and carpet – is installed with Newmar's own in-house process, ensuring the best in quality and longevity, as well as the finest fit.

- Designer Feature Ceiling
- Day/Night Pleated Window Shades & Lambrequins
- Mini Blinds in Bathroom
- Porcelain Tile Floor in Kitchen, Bathroom and Living Area
- Carpeting on Slideout Floors
- Dash Panel Color Coordinated ABS
- Decorative Wall Art
- Front entrance Door with Power Stepwell Cover
- Inlaid Six Panel Design Interior Passage Doors
- Interior Assist handle at Main Entry Door
- Quilted Bedspread with Shams, Bed Scarf & Accent Pillows
- 10 Bc Fire Extinguisher, Smoke Detector and Carbon Monoxide Detector

OPTIONS

- Floor Tile Extended into Bedroom Area
- Safe Located in Bedroom Wardrobe
- MCD Window Shades



Plumbing & Bath Features

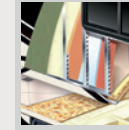
The Demand Water System's residential flow response ensures that the comfort and reliability of home are never far away.

- Demand Water System with SHURflo® Pump
- Sewage Holding-Tank Rinse
- Water Heater Bypass System*
- Dometic® Traveler China Bowl Stool or Macerator Stool*
- Monitor Panel
- Monoplex Water Pump Switch System
- Sentrel Acrylic Shower Walls with Glass Door
- Water Filter for Entire Unit

- Exterior Shower
- Dual Bathroom Vanity Sinks on Select Floor Plans

OPTIONS

- 110 Volt Heat Pads for Holding Tanks
- Power Water Hose Reel



Construction Features

From the chassis on up, Newmar coaches are built to be dependable, durable, comfortable, and beautiful.

- BriteTEK™ Roof with Walkable Decking
- Gelcoated Fiberglass Exterior Sidewalls, Front and Rear Caps
- Aluminum-Frame Sidewalls & Roof Construction, 16" on Center
- 5/8" Foam Insulation Laminated in Sidewalls & Ceiling

OPTIONS

- One Piece Molded Fiberglass Roof
- Mechanical Lock Arms on Four Slideout Rooms
- Power Baggage Door Locks, Keyless Entrance Door with Touch Pad and Door Bell
- Polar Pak R19 Batten Insulation in Roof
- Mechanical Lock Arms on three Slideout Rooms



Windows, Vents & Awnings

Experience as much – or as little – of the outdoors as you want in comfort and style.

- Double-Pane Tinted Safety-Glass Windows
- Fan-Tastic® Vent with Rain Sensor in Kitchen and Bathroom
- Skylight in Bathroom*
- Dometic® Oasis Manual Front Entrance Door Awning
- Dometic® Slideout Awning Covers
- One Piece Tinted Windshield

OPTIONS

- Dometic® 9000 Window Awning
- Dometic® Weather Pro Side Awning & Oasis Power Front Entrance Door Awning
- Kitchen Window

*Check with dealership on floor plan availability and complete listing of features.

VENTANA LE SPECIFICATIONS

Floor Plan	Engine HP	Axle Ratio	Fuel Cap.	Wheel Base	Front GAWR*	Rear GAWR*	Tag GAWR*	GVWR*	GCWR*	App. UVW	App. NCC
3433	340	4.78	100 gal.	206	12,000 lb.	20,000 lb.	0	31,000 lb.	33,000 lb.	25,500 lb.	5,500 lb.
3436	340	4.78	100 gal.	206	12,000 lb.	20,000 lb.	0	31,000 lb.	33,000 lb.	25,600 lb.	5,400 lb.
3634	340	4.78	100 gal.	228	12,000 lb.	20,000 lb.	0	31,000 lb.	33,000 lb.	25,300 lb.	5,700 lb.
3845	340	4.78	100 gal.	252	12,000 lb.	20,000 lb.	0	31,000 lb.	33,000 lb.	26,100 lb.	4,900 lb.
3847	340	4.78	100 gal.	252	12,000 lb.	20,000 lb.	0	31,000 lb.	33,000 lb.	26,100 lb.	4,900 lb.
3849	340	4.78	100 gal.	252	12,000 lb.	20,000 lb.	0	31,000 lb.	33,000 lb.	26,100 lb.	4,900 lb.
3850	340	4.78	100 gal.	252	12,000 lb.	20,000 lb.	0	31,000 lb.	33,000 lb.	26,100 lb.	4,900 lb.

VENTANA SPECIFICATIONS

Floor Plan	Engine HP	Axle Ratio	Fuel Cap.	Wheel Base	Front GAWR*	Rear GAWR*	Tag GAWR*	GVWR*	GCWR*	App. UVW	App. NCC
3433	360	4.78	100	206	12,000 lb.	23,000 lb.	0	35,000 lb.	45,000 lb.	26,900 lb.	8,100 lb.
3436	360	4.78	100	206	12,000 lb.	23,000 lb.	0	35,000 lb.	45,000 lb.	26,800 lb.	8,200 lb.
3634	360	4.78	100	228	12,400 lb.	23,000 lb.	0	35,400 lb.	45,400 lb.	26,900 lb.	8,500 lb.
4036	400	4.63	100	245+TAG	14,000 lb.	20,000 lb.	10,000 lb.	44,000 lb.	54,000 lb.	32,700 lb.	11,300 lb.
4037	400	4.63	100	245+TAG	14,000 lb.	20,000 lb.	10,000 lb.	44,000 lb.	54,000 lb.	32,700 lb.	11,300 lb.
4039	400	4.63	100	245+TAG	14,000 lb.	20,000 lb.	10,000 lb.	44,000 lb.	54,000 lb.	32,700 lb.	11,300 lb.
4360	400	4.63	100	281+TAG	14,000 lb.	20,000 lb.	10,000 lb.	44,000 lb.	54,000 lb.	33,500 lb.	10,500 lb.
4369	400	4.63	100	281+TAG	14,000 lb.	20,000 lb.	10,000 lb.	44,000 lb.	54,000 lb.	33,500 lb.	10,500 lb.
4373	400	4.63	100	281+TAG	14,000 lb.	20,000 lb.	10,000 lb.	44,000 lb.	54,000 lb.	33,500 lb.	10,500 lb.
4377	400	4.63	100	281+TAG	14,000 lb.	20,000 lb.	10,000 lb.	44,000 lb.	54,000 lb.	33,500 lb.	10,500 lb.



Driven By You



Lengths, heights, widths and dry weights are approximate. Weight will vary based on optional equipment added to the above base weight.

GAWR: Gross Axle Weight Rating is the maximum permissible weight for an axle.

GVWR: Gross Vehicle Weight Rating is the maximum permissible weight for a fully loaded motor coach.

GCWR: Gross Combination Weight Rating is the value specified by the manufacturer of the vehicle as the maximum allowable loaded weight of this motor coach and any towed trailer or towed vehicle.

UVW: Unloaded Vehicle Weight is the weight of this motorcoach as built at the factory with full fuel, engine oil and coolants. The UVW does not include cargo, fresh water, propane gas or dealer-installed accessories.

NCC: Net Carrying Capacity is the maximum weight of all occupants, including the driver, personal belongings, food, fresh water, waste water, propane gas, tools, tongue weight of towed vehicle, dealer installed accessories, etc., that can be carried by the motor coach.

*Specifications supplied by the chassis manufacturer.

Trust.

The strongest possible foundation for a motor coach.

According to Newmar president Matthew Miller, "Customers say they're loyal to us because they trust us to stand behind our products – from support, parts and service to paying our warranties. It feels good to own a coach that has all of that behind it."

How do we sustain this high level of service? At Newmar, there's a Miller way of doing things. These principles guide us every day. Courtesy. Integrity. And reliability. So when you buy from Newmar, you know that every single person who touches your coach or talks with you has your back. Period.



▲ Mahlon Miller, Newmar founder, and Matthew Miller, Newmar president, lifelong motor coach enthusiasts

Our Partners.

Where the finest names in quality and performance are along for the ride.

Newmar strives to offer the best motor coach experience possible, and to that end we partner with the most prestigious names in mobile lifestyle, entertainment, and technology. Depending on the Newmar motor coach you choose, our compliments range from Sony's comprehensive audio, video, communications and information technology to Freightliner and Spartan's superior and dependable chassis designs. Newmar only accepts best-in-class performance from the most trusted names in the business. At Newmar, that's our difference. And our promise.



2014 Ventana LE & Ventana

NEWMAR EXPRESS LIMITED WARRANTY

Every Ventana LE & Ventana Diesel Pusher is backed by Newmar's one-year limited warranty/unlimited miles. Ask your Newmar dealer for details.

LIMITED FIVE-YEAR STRUCTURAL WARRANTY

If any part of your Newmar recreational vehicle superstructure (which is the steel/aluminum structure of the sidewall, roof or frame) fails to perform properly within five years from the date of purchase because of faulty workmanship or material supplied by Newmar, it will be repaired without charge for either parts or labor by Newmar. This structural warranty is available only to the original purchaser and is non-transferable.

Some features in our literature are optional. Colors and finishes are photographic representations. The actual materials may look different. Prices, specifications and floorplans are subject to change at Newmar's discretion, without prior notice or obligation. Please see your dealer for actual samples and specifications.



WHEN YOU KNOW THE DIFFERENCE SM

NEWMAR CORPORATION
355 N DELAWARE ST
PO BOX 30
NAPPANEE IN 46550-0030
574-773-7791 Fax 574-773-2895

www.newmarcorp.com