

TERRA 2014

TERRA®



FLEETWOOD RV

WONDER DOWN A NEW PATH

After a long day of exploring, Terra greets you with natural beauty, comfort and all the modern conveniences. When you're ready to roam, Terra will take you down a new path.



TERRA 35K SHOWN IN STATELY STERLING INTERIOR DÉCOR WITH SPICE WOOD CABINETRY



WHY BUY TERRA?

Packed with Value.

Terra makes the ordinary road trip, extraordinary. Enjoy the residential features. Relax in the spacious floor plans. Discovering Terra will be as much fun as discovering the great outdoors.

Make an Impression.

Terra's dazzling standard full-body paint and molded fiberglass caps will make you the talk of the campground.

Home Sweet Road.

From the Flexsteel® soft-touch leather furniture to the Corian® countertops and Sony® electronics, Terra really does allow you take it with you.

Hide-A-Loft.

Now you see it. Now you don't. The available "Hide-A-Loft" on Terra adds another queen bed in just seconds.



2014 GRAPHICS AND DÉCOR

TERRA



Natural Taupe



Stately Sterling

Both inside and out, we offer a wide selection of colors, styles and finishes. From the moment you lay your eyes on a Fleetwood RV, the high-style graphics and décor collection welcome you with gracious beauty and contemporary design. We've paid attention to every detail. So wherever you are, you'll feel right at home.

	NATURAL TAUPE	STATELY STERLING	CABINETS
SOFA			CINNABAR
ACCENT			
BEDSPREAD			SPICE
COUNTERTOP			
FLOORING			
CARPET			

STANDARD FEATURES AND OPTIONS

INTERIOR THROUGHOUT

- 12V Water Pump, Demand Operation
 - 6 Gallon Propane Water Heater w/Electronic Ignition
 - AC/DC Load Center w/12V Converter/Battery Charger
 - Auxiliary Battery w/Disconnect Switch
 - Central Monitor Panel
 - Complete PEX Plumbing System
 - Deluxe Roller Bearing, Full Extension Drawer Guides & Transit-Ship Locks
 - Dual 15,000 Btu Ducted Air Conditioner w/Chill Grill
 - Dual 20,000 BTU Furnaces (31TS, 34E)
 - Single 34,000 BTU Furnace (35K)
 - GFI Circuit Protection
 - Hardwood Raised Panel Cabinet Doors
 - Hidden Cabinet Door Hinges
 - Soft Touch Ceilings
 - Ozite Lined Shelves in Overhead Cabinets
 - Pleated Day/Night Shades in Living Room & Bedroom
 - Quality Constructed Furniture by Villa® (Comfort Fit)
 - Vinyl Flooring Throughout (Except Bedroom and Slideout Applications)
 - Water Heater Bypass Valve Fresh Water System
 - Water Pump with On/Off Switches at Galley & Lav
- Optional*
- 19" Bedroom LED TV
 - Convection Microwave
 - Dual 15,000 Btu A/C's w/Heat Pump
 - Hide-A-Loft Queen Bed
 - Home Entertainment Center
 - Mattress Upgrade
 - Satellite Radio

DRIVER CONVENIENCE

- 12V Power Jack
- 3 Point Seat Belts at Driver & Front Passenger Seats
- Auxiliary Emergency Start Assist Switch on Dash
- Cruise Control
- In-Dash AM/FM/Radio w/CD Player
- Manual Roller Sun Visors
- Power Heated Remote Mirrors
- Radio Switch Main/Auxiliary Power
- Rear Vision Camera w/Integrated Radio/In-Dash Monitor
- Soft Touch Villa® (Comfort Fit) Driver/Passenger Captain's Chair w/Reclining Back/Slide Controls
- Tilt Wheel

LIVING ROOM

- 32" LED TV w/DVD Player (31TS, 34E)
- 39" LED TV w/DVD Player (35K)
- Ceiling Lights w/Wall Switches (Entry & Bath)
- Day/Night Pleated Shades
- Pedestal Sofa Table w/Locking Legs (Select Models)
- Soft Touch Sofa Bed (Select Models)

GALLEY

- 3 Burner Range w/High Output/Piezo Igniter & Oven
- Backsplash at Galley Area Cooktop Cover
- Dometic® 8 cu. ft. Refrigerator/Freezer
- Microwave Oven w/Electronic Touch Pad
- Power Roof Fan-Tastic® Vent Fan
- Raised Panel Refrigerator Inserts
- Residential Size Double Bowl Sink
- Solid Surface Countertops
- Whole Coach Water Filtration System

BEDROOM

- Bedspread w/Reverse Pillow Shams
- Queen Bed
- Reading Lights in Bed Overhead Cabinet
- Wall Space for TV w/AC Receptacle & Cable Jack

BATHROOM

- Bath Door w/Residential Passage Lock
- China Bowl Toilet w/Hand Sprayer
- Glass Shower Door Enclosure
- Laminate Countertops w/Solid Surface Edge
- Medicine Cabinet w/Wood Construction
- Molded ABS Shower/Tub
- Residential Style Faucet
- Shower Head w/Flexible Hose Extension
- Skylight/Roof Vent w/12V Fan
- Stainless Steel Sink

SAFETY/CONVENIENCE (INTERIOR)

- 10 ABC Fire Extinguisher
- Carbon Monoxide Detector/Alarm
- Exterior & Interior Entry Assist Handle
- Multiple Seatbelt Locations
- Propane Detector/Alarm
- Smoke Detector/Alarm

EXTERIOR THROUGHOUT

- Debris Awning Above All Slide-Out Rooms
 - Dual 6V Deep Cycle Auxiliary Batteries
 - High Gloss Smooth Fiberglass Exterior
 - Hydraulic Leveling Jacks
 - Large 1" (Inside Diameter) Water Tank Drain
 - Molded Wheel Trim Flares
 - Onan® 5.5kW Generator
 - Outstanding Exterior Graphics and Styling
 - Patio Awning
 - Power Electric Step
 - Rear Ladder
 - Stainless Steel Wheel Simulators
 - Toilet Tank San-T-Flush(TM) System
 - Trailer Hitch w/7 Pin Electrical Hook-Up
 - Wash Unit w/Faucet, Flexible Shower Hose
- Optional*
- Clear Protective Front Mask
 - Dual Pane Windows
 - Electric Patio Awning
 - Exterior Entertainment Center with AM/FM/CD Player, Coax Cable and 120 volt Receptacle
 - Full Body Paint

SAFETY/CONVENIENCE (EXTERIOR)

- 30 Amp, 30' Power Cord, Compartment Storage
- AC Duplex GFI Receptacle on Patio Side
- Amber Porch Light w/Interior Switch
- Automotive Safety Glass
- Entry Door w/Screen Door & Deadbolt Lock
- High Mounted Large Taillights
- Power Electric Step
- Power/Heated Rear View Mirrors
- Radius Tinted Windows
- Rear Vision Camera w/Integrated Radio/In-Dash Monitor

STORAGE

- Full Basement Exterior
- "Slam Latch" Luggage Doors
- Molded Cross Link Polyethylene Battery Compartment w/lid
- Pass Through Storage
- Roto-Molded Polyethylene Luggage Compartments

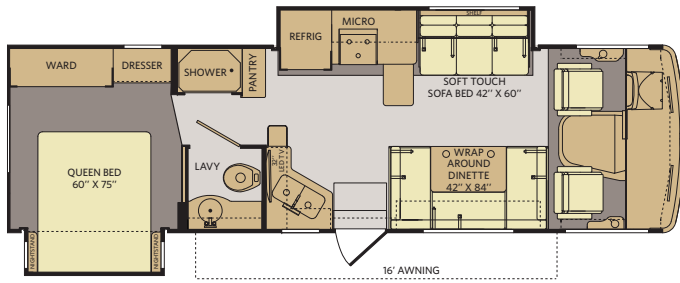
BODY STRUCTURE

- 26" Wide Radius Corner Entry Door w/Obscured Window
- Corrosion Resistant Aluminum Tube Hull Framing
- Full Basement Exterior w/Enclosed, Heated Holding Tanks & Luggage Compartments
- Molded Fiberglass Front Cap
- Molded Fiberglass Rear Cap
- Radius Roof with Ducted A/C
- Side Fuel Fill
- Sidewalls Framed with 1 1/2" Aluminum Tubing
- Steel Basement Truss System
- Vacu-bond® Floor
- Vacu-bond® Hull Lamination Process



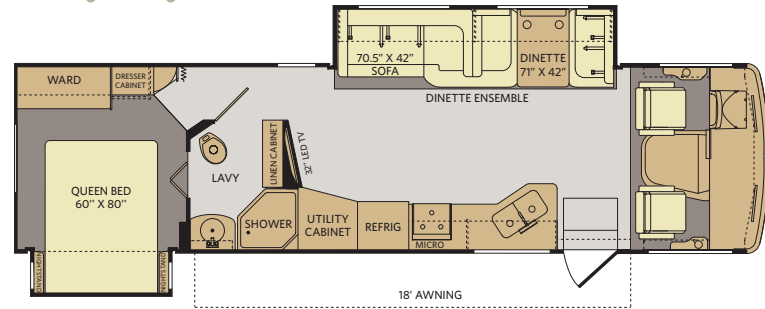
TERRA FLOOR PLANS

31TS



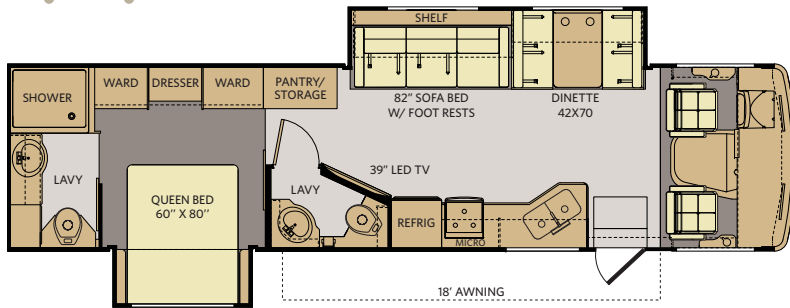
Available options: 084, 121, 217

34E



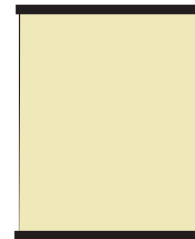
Available options: 084, 121, 217, 808

35K



Available options: 084, 121, 191, 217

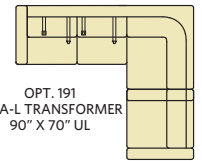
FLOOR PLAN OPTIONS



OPT. 217
HIDE-A-LOFT
DROP DOWN
QUEEN BED 60" X 80"



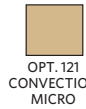
44 X 70 SOFA 44 X 74 DINETTE
OPT. 808
CONVERTIBLE DINETTE W/ SOFA



OPT. 191
SOFA-L TRANSFORMER
90" X 70" UL



OPT. 084
BEDROOM
19" LED TV



OPT. 121
CONVECTION
MICRO

WEIGHTS & MEASUREMENTS

CHASSIS	FORD®		
	MODELS	31TS	34E
Engine Displacement (liters)	6.8	6.8	6.8
Wheelbase (inches)	208"	208"	228"
GVWR (lbs) ¹	22,000	22,000	22,000
Front GAWR (lbs) ²	8,000	8,000	8,000
Rear GAWR (lbs) ²	15,000	15,000	15,000
GCWR (lbs) ³	26,000	26,000	26,000
Hitch Rating Weight (lbs) ^{†, ††}	5,000	5,000	5,000
Tongue Weight (lbs) [†]	500	500	500
Fuel Capacity (gal)	80	80	80

FORD® CHASSIS

Model: Ford®

Engine: 6.8L Triton V10

Transmission: Ford®, 5-Speed, Automatic w/Overdrive

Alternator: 175 Amp

Torque: 457 lb-ft @ 3,250 RPM

Horsepower: 362HP

DIMENSIONS & CAPACITIES

MODELS	31TS	34E	35K
Overall Length (inches) ⁴	31' 2"	34' 2"	36' 2"
Overall Height (with A/C)	12'	12'	12'
Overall Width (maximum) ^{5, 6}	102"	102"	102"
Interior Height (maximum)	82"	82"	82"
Interior Width (maximum)	96"	96"	96"
Interior Storage (cu. ft.)	136	116	74
Exterior Storage (cu. ft.)	102	138	127
Fresh Water Holding Tank (gal)	60	60	60
Grey Water Holding Tank (gal)	35	37	37
Black Water Holding Tank (gal)	35	35	37
Appliance Propane Tank (gal) (WC) ⁷	14	14	14
Water Heater Tank (gal)	6	6	6

ADDENDUMS

- GVWR (Gross Vehicle Weight Rating) is the maximum permissible weight of this fully loaded motorhome. The GVWR is equal to or greater than the sum of the (UVW) unloaded vehicle weight plus the (OCCC) occupant cargo-carrying capacity.
- GAWR (Gross Axle Weight Rating) is the maximum permissible loaded weight a specific axle is designed to carry.
- GCWR (Gross Combined Weight Rating) is the value specified by the motorhome manufacturer as the maximum allowable loaded weight of this motorhome with its towed vehicle. Towing and braking capacities may be different. Refer to Fleetwood and chassis manufacturer's manuals for complete information.
- Length measured from front bumper to rear bumper (excludes accessories).
- Excludes safety equipment and awnings.
- Motorhomes feature a body width over 96" which will restrict your access to certain roads. Before purchasing, you should research any state and/or province road laws which may affect your usage.
- Tank manufacturer's listed water capacity (WC). Actual propane capacity is 80% of water listing as required by the safety code.

† The chassis manufacturer recommends the installation of a supplemental brake control system to activate the brakes on the vehicle or trailer you are towing. Hitch receiver ratings expressed are maximum for the hitch receiver installed and may require the purchase of additional equipment that is dependent on the weight of the towed load. Consult with hitch receiver manufacturer for further information.

†† Minimum Towable Load is the available weight, up to GCWR, when the coach is fully loaded to maximum GVWR. However, if the coach is loaded to something less than maximum GVWR, that extra available weight can be added to your Towable Load. For example, if your coach is loaded to 1000lbs less than maximum GVWR, your Towable Load increases accordingly.

* UVW and OCCC are found on the label containing the federal certification tag in each RV.

IMPORTANT—PLEASE READ: Product information, photography and illustrations included in this publication were as accurate as possible at the time of printing. For further product information and changes, please visit our website at www.fleetwoodrv.com or contact your local Fleetwood RV dealer. Prices, materials, design and specifications are subject to change without notice. All weights, fuel, liquid capacities and dimensions are approximate. Fleetwood RV has designed its recreational vehicles to provide a variety of uses for its customers. Each vehicle features optimal seating, sleeping, storage and fluid capacities. The user is responsible for selecting the proper combination of loads (i.e., occupants, equipment, fluids, cargo, etc.) to ensure that the vehicle's capacities are not exceeded.



WHY FLEETWOOD RV?



Quality

There's no cutting corners. Skilled craftsmen build every Fleetwood RV for maximum durability and longevity.



Trust

More people trust Fleetwood RV. After all, we've spent over 60 years perfecting RVs, earning the loyalty of generations of RVers.



Passion

We're truly passionate about the RV lifestyle. Fleetwood RV was founded by RV enthusiasts, and that tradition continues today.



Safety

You've got precious cargo. So we've engineered dozens of innovative safety features into our motor homes to give you more peace of mind.



Service

Help is nearby with 24/7 emergency Fleetwood RV Trusted Roadside Assistance*. And when you need an upgrade or repair, you'll find Fleetwood RV dealers all across North America ready to assist you.



Warranty

Exclusive RV OwnerCare warranty. See your Fleetwood RV dealer for details.

* All 2014 Fleetwood RV motorhomes include a 1-year emergency roadside assistance membership. For complete info, see your Fleetwood RV dealer.

**For complete info, see your Fleetwood RV dealer.



Visit FleetwoodRV.com or find FleetwoodRV Tablet apps in the App Store or Google Play.

RV OWNERCARE**

Limited one-year/15,000-mile coach warranty and three-year/45,000-mile structural warranty, whichever occurs first, and it is fully transferable for the first 12 months. RV OWNERCARE is one of the RV industry's most comprehensive programs and includes systems, appliances, components and construction, with no deductible and no service charge. RV OWNERCARE coverage is provided by a company that will be around in the future to service your needs. See your nearest Fleetwood RV dealer for a full explanation of benefits and restrictions.

CONTACT US

To locate a dealer near you, visit our website at www.fleetwoodrv.com or call 1-800-322-8216. We can also be contacted at Fleetwood RV Customer Relations, P.O. Box 1007, Decatur, IN 46733.

FLEETWOOD MOTORHOME ASSOCIATION

As a Fleetwood RV owner, you're invited to become a member of the Fleetwood Motor Home Association (FMA). Becoming a member is the perfect way to meet other Fleetwood owners who love to travel across American and share in the RV lifestyle. Visit the FMA website at www.fma4fun.org to learn more and join the fun.



YOUR LOCAL FLEETWOOD RV DEALER IS:

©2013. Fleetwood RV, Inc.
Printed in the USA. Inventory Control Number TAR14B1, 10/13.
Model Year 2014, First Edition.