

SUNSTAR



Why Sunstar?

- Six family-friendly floorplans
- LED ceiling lights (NA 26HE and 31KE)
- Master walk-around queen bed
- Ultraleather™ swivel cab seats (leatherette 26HE and 31KE)
- Bunk beds (35B)
- Available StudioLoft™ (NA 26HE)
- MCD roller shades
- Private master bath and guest half bath (35B and 35F)



ON THE COVER: 35B Vintage Red Full-Body Paint

35B Brownstone with Coffee-Glazed Vienna Maple Cabinetry

A MOTORHOME FIT FOR YOU

Class A value-seekers have their eyes set on the Itasca Sunstar® for good reason. The new 31KE with a U-shaped dinette, mid-coach HDTV, and walk-around queen bed joins the diverse lineup of six floorplans. As always, the Sunstar is competitive in price, but it blows away the competition in standard features, including MCD roller shades, a powered patio awning, and power mirrors with

defrost. We have even added an available StudioLoft™ drop-down bed to most models to provide more sleeping areas for families on the go. With so many options built into Winnebago Industries'® legendary quality standards, there is an Itasca Sunstar that will fit your lifestyle and your budget.



RECOGNIZED QUALITY The RV Dealers Association bestows its annual Quality Circle Award based on dealer ratings to manufacturers that provide exceptional products, service and support. Only one manufacturer has received this award for seventeen consecutive years: Winnebago Industries.®

BEST IN CLASS

See how Winnebago Industries takes motorhome design and function to the next level, and why we've earned the right to be called the Most Recognized Name in Motorhomes.®



Click on this icon throughout the brochure to link to more information on the web.



The available **Comfort Sofa Sleeper** (27N, 30T, 35B) quickly converts from a sofa into a comfortable bed that features a self-inflating mattress and pump that automatically gauges mattress pressure to maintain your desired setting.



The **OnePlace® Systems Center** lets you check major systems at the touch of a button.



Enjoy exceptionally comfortable dining in the **BenchMark® Full Comfort Dinette** (NA 26HE, 31KE) with its premium innerspring seating. The seats tilt up to provide easy access to storage underneath and can easily convert into a comfortable sleeping space.



You can set the level of light and privacy you prefer with the smoothly-retracting **MCD Roller Shades**.



The available **Dash Workstation** is the perfect place to plan the next leg of your trip (NA 26HE, 31KE).

You can create your ideal living space with so many furniture options among six different floorplans. From a sofa/bed to a Comfort Sofa Sleeper (27N, 30T, and 35B) to the Extendable Sectional Sofa (35F) to the available pull-down StudioLoft bed (NA 26HE), your lounge can be set up to accommodate a few or many guests. Plus, the Ultraleather™ cab seats (leatherette 26HE and 31KE) swivel around to face the lounge. You can adjust the MCD roller shades and LED ceiling lights to your preferred level of privacy and light.



35B Brownstone with Coffee-Glazed Vienna Maple Cabinetry



Available StudioLoft

You'll enjoy preparing delicious meals or late night snacks in this full-featured galley with its microwave oven, 3-burner range top, and a 2-door refrigerator/freezer (available 4-door refrigerator/freezer 35B, 35F). Most floorplans feature elegant Corian® countertops (laminates in 26HE and 31KE) and full-extension drawer slides ensure plenty of storage space for your cooking supplies. For even more upscale features, add the available Interior Upgrade Package that includes a galley backsplash, range cover, flip-up countertop extension (NA 27N), and two wood sink covers for added prep space.



35B Galley



31KE Galley



35B 4-Door Refrigerator/Freezer



Full-Extension Drawer Slides



35B Pantry

Although every Sunstar comes with a standard dinette, including a U-shaped dinette in the 31KE, a variety of dining options are available. Whether it's the BenchMark® full comfort dinette with seats that flip up for easy access to storage underneath (NA 26HE, 31KE) or the 30T with its dining/buffet table and retractable 32" HDTV, there is a dining arrangement to suit your lifestyle.



35B Benchmark Dinette



31KE U-Shaped Dinette



35B Bedroom

There are six different floorplans to choose from, and each master bedroom features a walk-around queen bed. Whether you're looking for a private master bathroom with the BIG Shower (35B and 35F), bunk beds for the kids (35B), or a spacious wardrobe (27N and 35B), the Sunstar has the ideal layout for you. For those who rely on a CPAP/BPAP machine to get a good night's sleep, you'll be glad to know there's a 110-volt outlet that is connected to the available 1,000-watt inverter (NA in 26HE and 31KE).



Bunk Beds



35B Wardrobe



35B Master Bathroom



35B Dash

Driving is so much more pleasurable thanks to the comfortable, adjustable Ultraleather™ cab seats (leatherette 26HE and 31KE). Plus, the standard Rearview Monitor System and available sideview cameras (NA 26HE, 31KE) are helpful when maneuvering the coach. In addition, your co-pilot will appreciate the available dash workstation as a convenient workspace (NA 26HE, 31KE).



35B Dash Workstation



Powered Mirrors



31KE Swivel Cab Seats

Enjoy your sunny afternoons under the standard powered patio awning, and spend your evenings with the available exterior entertainment center, complete with an AM/FM stereo, a 32" HDTV (27N, 35B, 35F), and speakers.



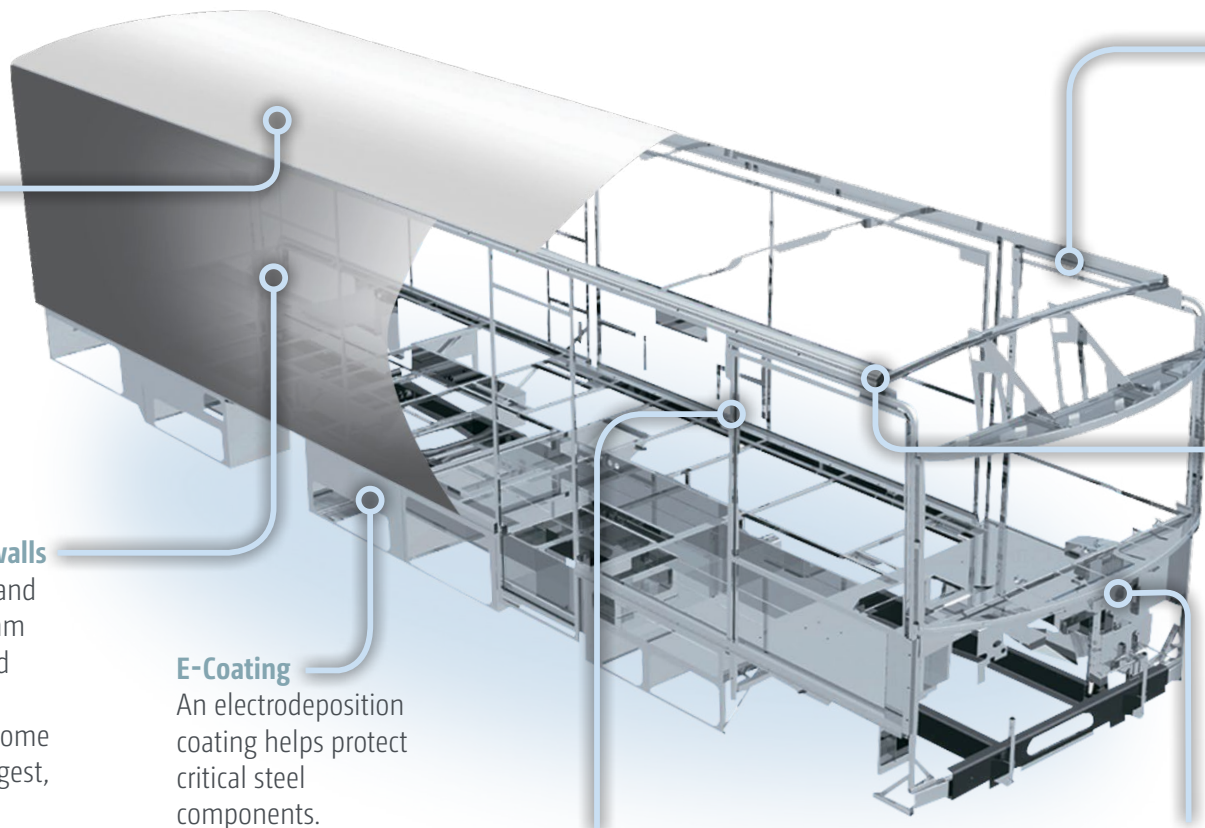
Powered Patio Awning



Available Exterior Entertainment Center with HDTV (27N, 35B, 35F)



Exterior Service Center



Fiberglass Roof

The crowned, one-piece fiberglass roof is backed by a 10-year parts-and-labor roof skin warranty.

Rubber Can't Cut It

Rubber roofs used by competitors can streak and degrade over time.

Thermo-Panel® Sidewalls

By layering fiberglass and high-density block foam insulation with welded aluminum support structures, we create some of the industry's strongest, most durable and lightweight sidewalls.

E-Coating

An electrodeposition coating helps protect critical steel components.

Embedded Steel Metal substructures embedded into the sidewall provide solid attachment points to keep cabinets and appliances mounted securely in place.

Laser-Cut Tubing

Precision laser cutters create precision joints in structural steel that are stronger and require less welding.



Interlocking Joints

Specially engineered interlocking joints connect the floor, sidewalls and roof where competitors often rely on simple screws to bear the weight.



Solid Framework Aluminum extruded in our own facility to our exacting standards creates an extremely strong and solid structural framework.

SUPER STRUCTURE®

BUILT TO LAST

Every coach—from our smallest Class C to our largest diesel pusher model—is built to Winnebago Industries'® legendary SuperStructure® construction standards. It's a process developed and refined over more than 50 years of building some of the strongest, most durable coaches in the industry.

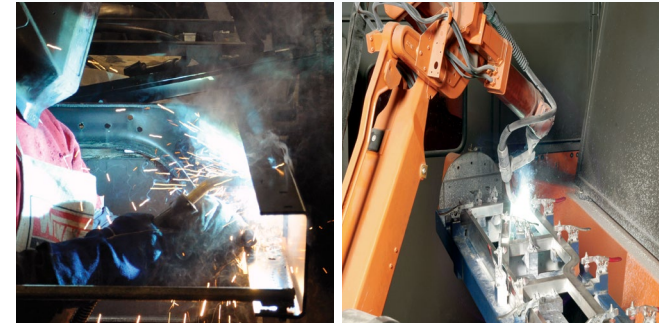
TESTING Before rolling out of our factories, every coach undergoes an extensive 113-point inspection. Each coach also passes a high-pressure water test that simulates rain at a rate of 50-inches per hour to check for leaks. During the design process, our computer simulations, physical testing center, and rigorous test track ensure each model is built to last.



DETAILS At Winnebago Industries, we treat the features you can't see with the same care as the ones you can. Look in the access panels of some of our competitors' coaches and you'll see loose insulation and wires haphazardly strewn about. Winnebago Industries maintains a clean fit and finish throughout so your coach will last for the long haul.



BUILT IN-HOUSE We extrude our own aluminum. We rotocast our own plastic components. In fact, we manufacture most of our own parts so they are designed to fit the space, rather than fitting the space to an awkward off-the-shelf component size.



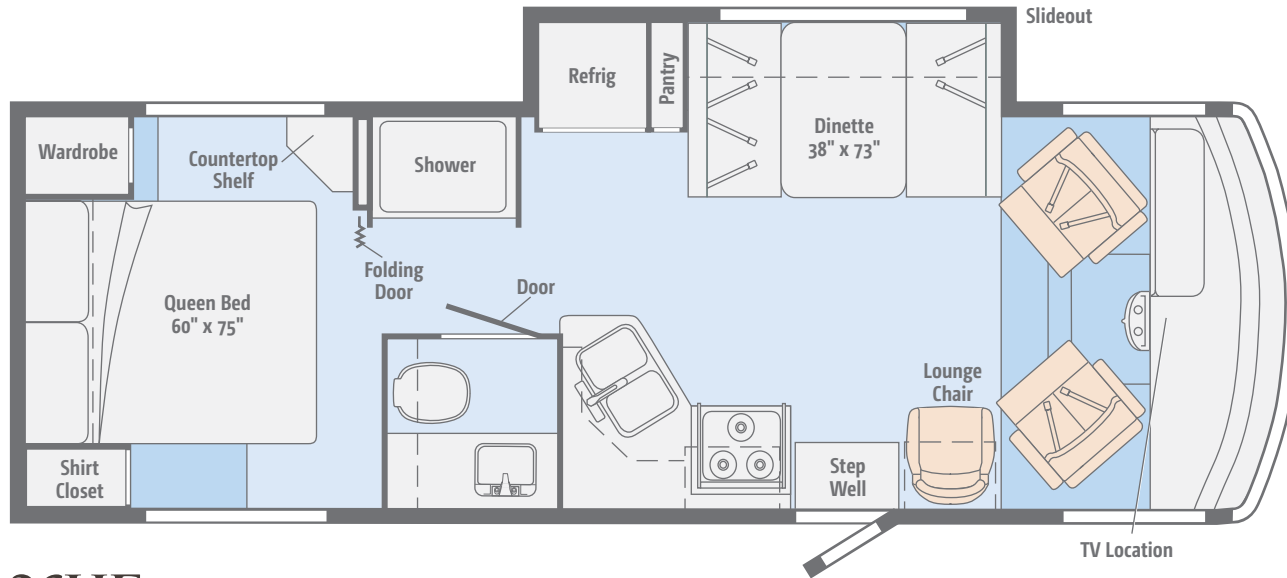
**SUPER
STRUCTURE**
BUILT TO LAST

Visit BetterBuiltRVs.com to gain real insight into what goes into a Winnebago Industries motorhome.

TAKE A TOUR We're proud of our processes, state-of-the-art facilities, and the people who make Winnebago Industries number one. We invite you to visit our complex in Forest City, Iowa, for a first-hand look at the dedication and technology behind every motorhome we build.



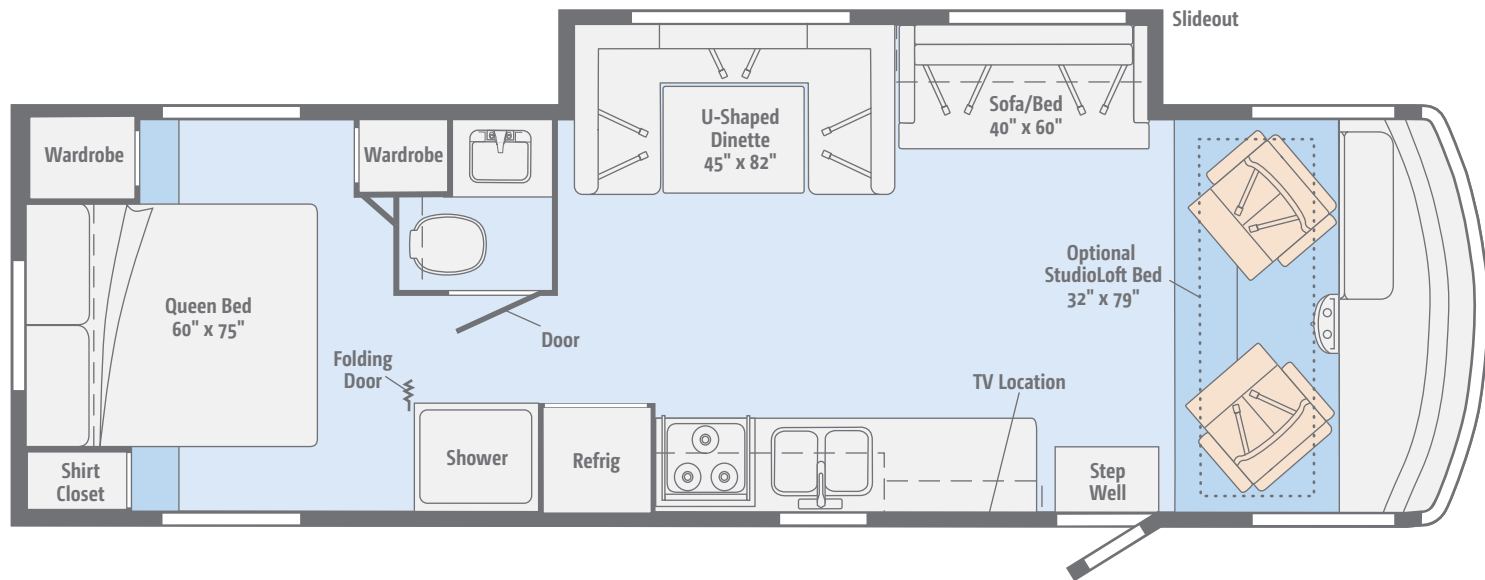
Dimensions shown are for sleeping space only and may vary due to styling differences. Dashed lines denote overhead storage areas. Floorplans and specifications are also available online at Goltasca.com.



26HE

With features such as swivel cab seats, a complete galley, and a walk-around queen bed, this is the ideal floorplan for any RV enthusiast.

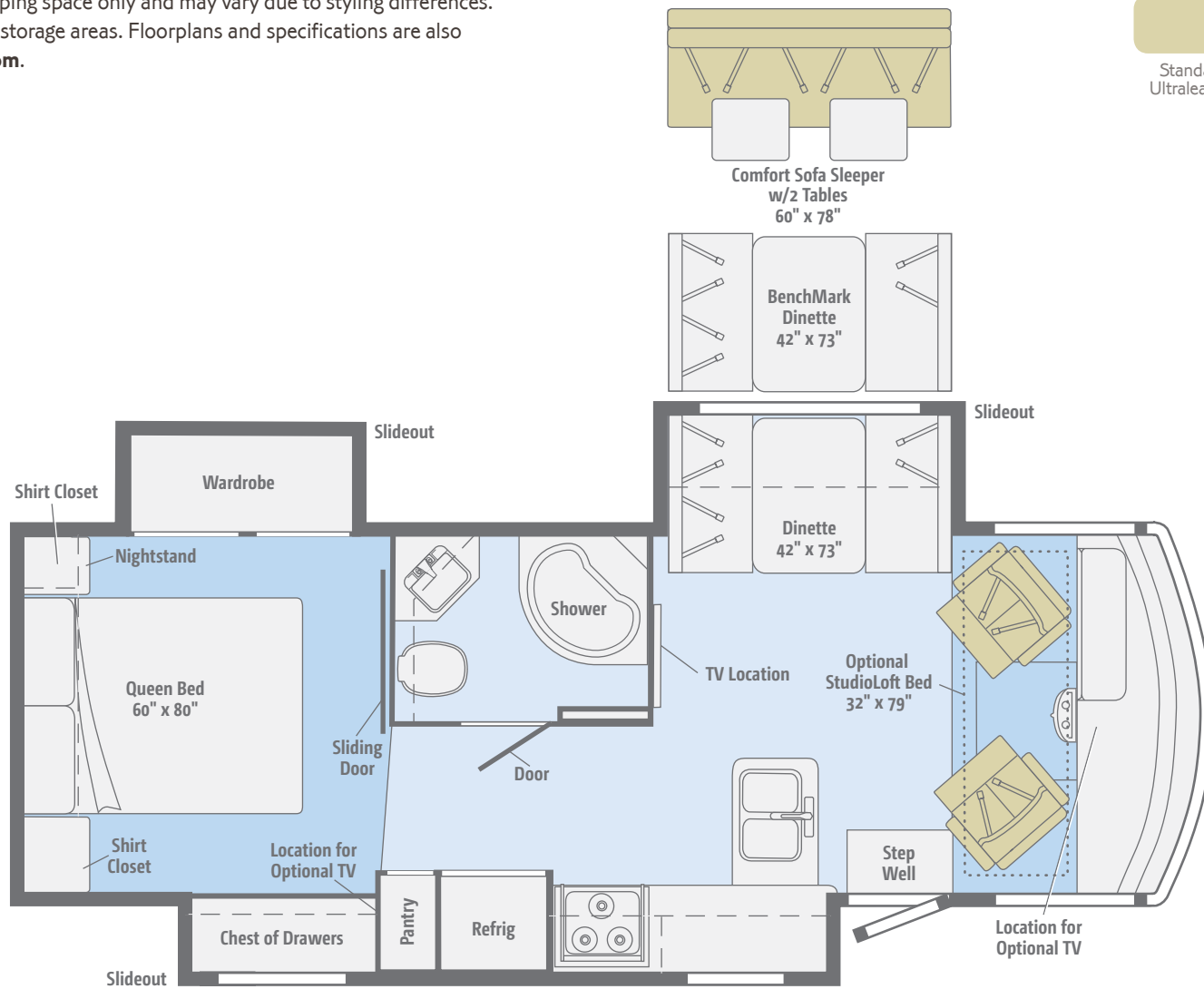
Dimensions shown are for sleeping space only and may vary due to styling differences. Dashed lines denote overhead storage areas. Floorplans and specifications are also available online at Goltasca.com.



NEW 31KE

Desirable amenities abound in this new floorplan with a single slideout such as a sofa/bed, U-shaped dinette, split bath, shirt closet and wardrobe, and a walk-around queen bed.

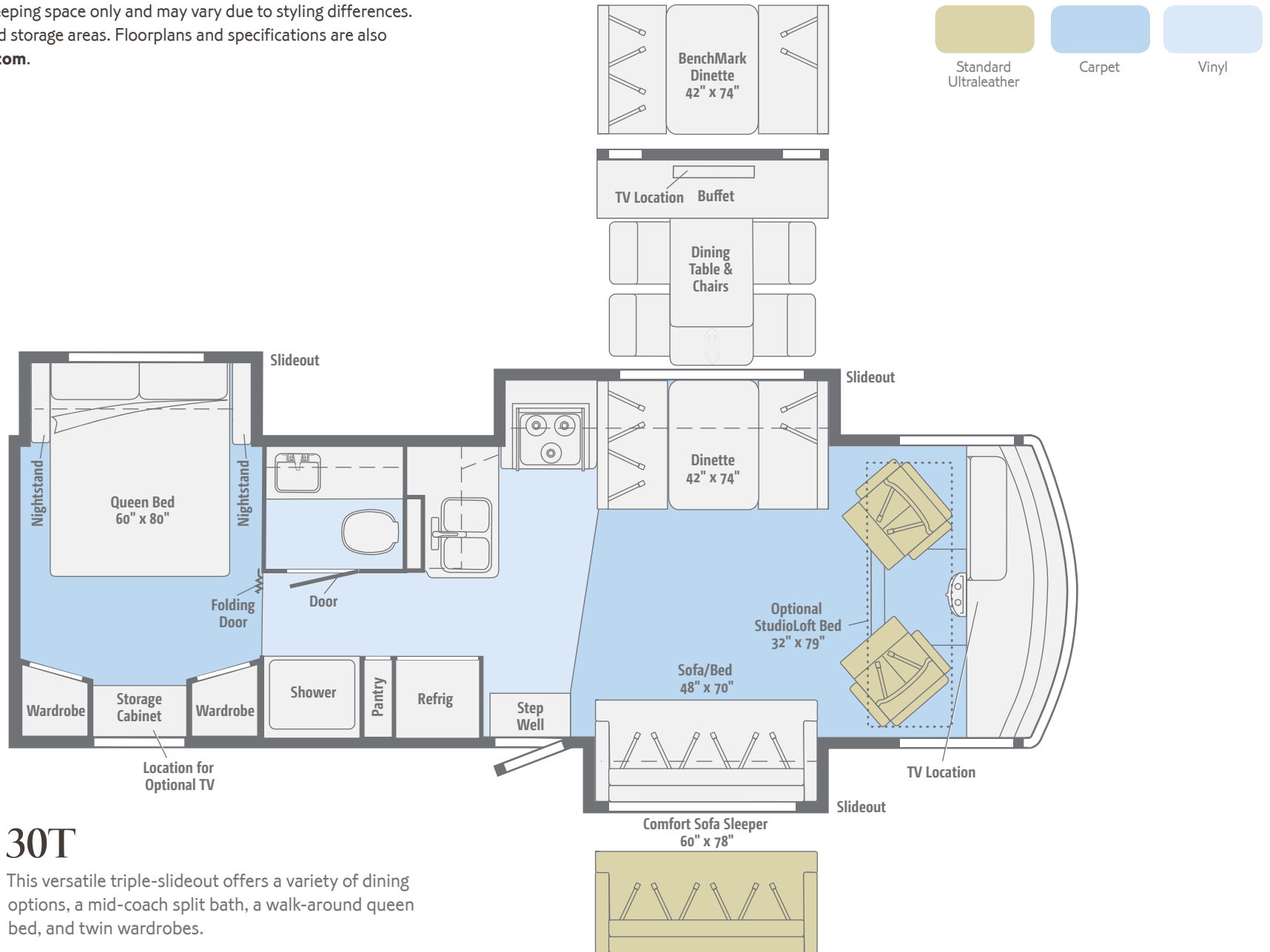
Dimensions shown are for sleeping space only and may vary due to styling differences. Dashed lines denote overhead storage areas. Floorplans and specifications are also available online at Goltasca.com.



27N

This triple-slideout offers a variety of furniture choices, a mid-coach full bath, and a master bedroom with two shirt closets and a large chest of drawers.

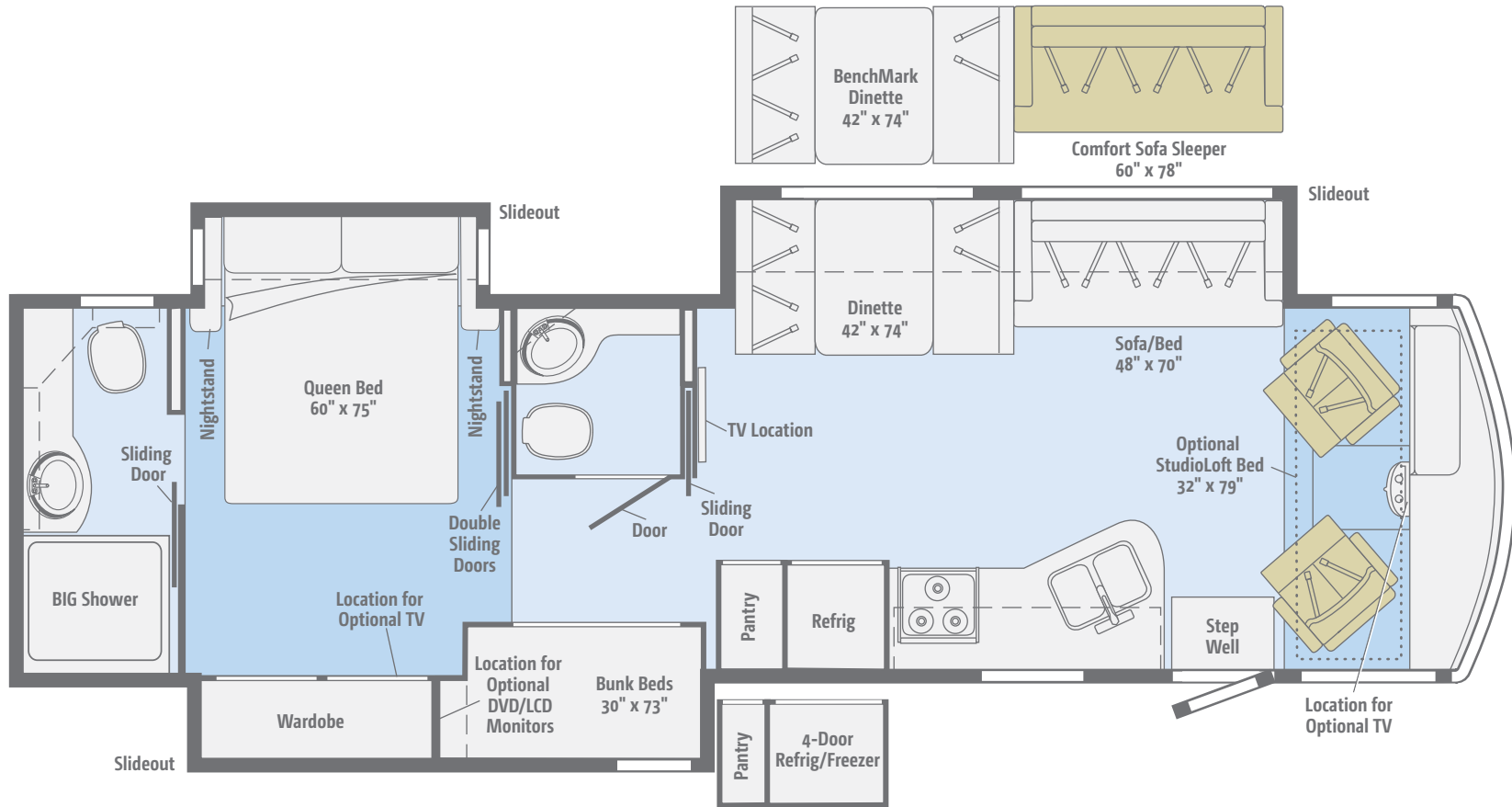
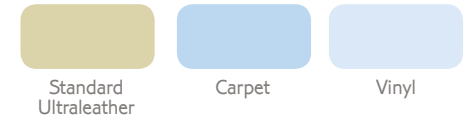
Dimensions shown are for sleeping space only and may vary due to styling differences. Dashed lines denote overhead storage areas. Floorplans and specifications are also available online at Goltasca.com.



30T

This versatile triple-slideout offers a variety of dining options, a mid-coach split bath, a walk-around queen bed, and twin wardrobes.

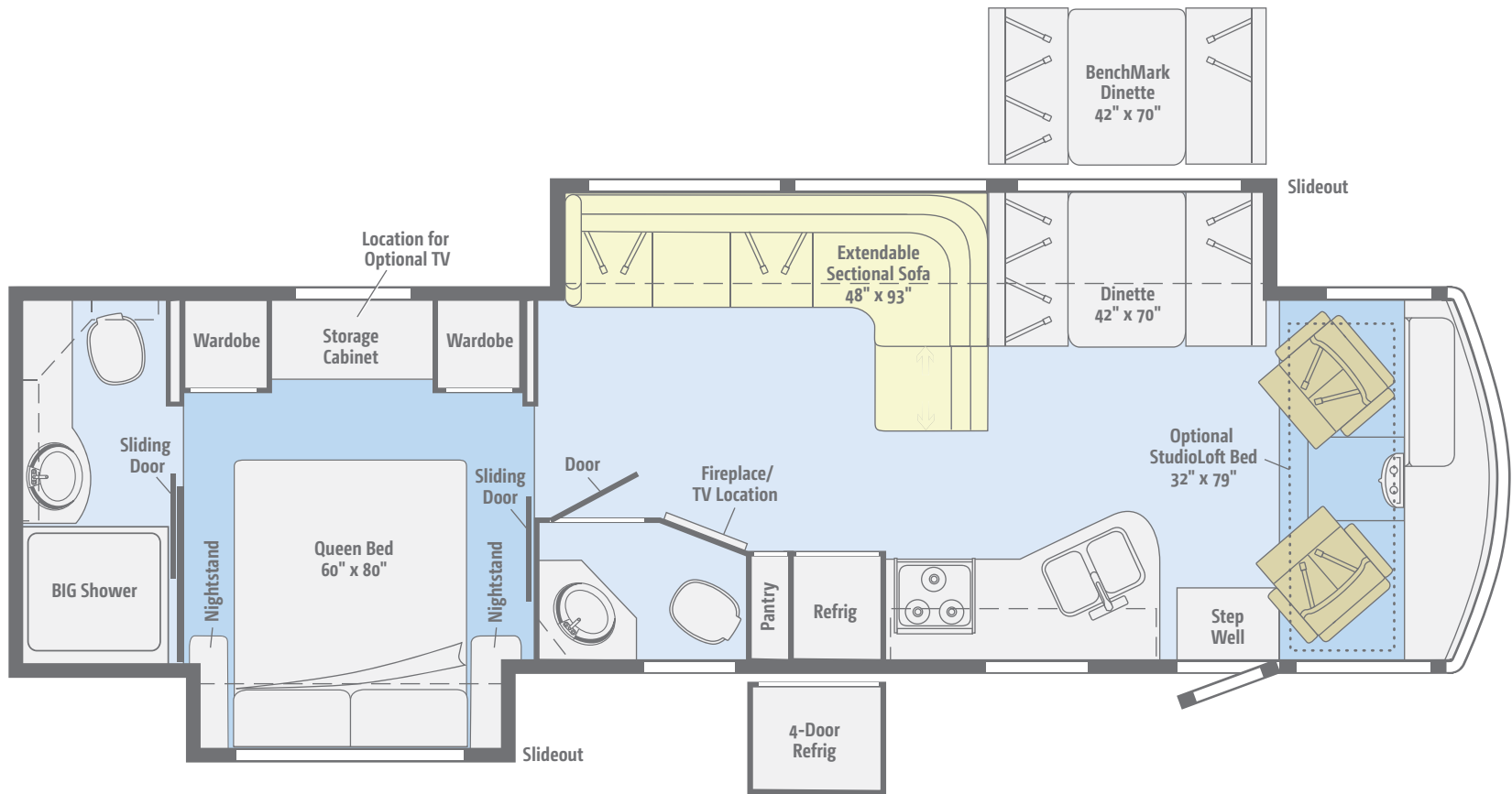
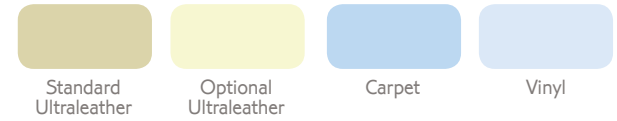
Dimensions shown are for sleeping space only and may vary due to styling differences. Dashed lines denote overhead storage areas. Floorplans and specifications are also available online at Goltasca.com.



35B

Family vacations are more enjoyable and peaceful with room to sleep seven people, a mid-coach HDTV, and two bathrooms, including the BIG Shower in the master bath.

Dimensions shown are for sleeping space only and may vary due to styling differences. Dashed lines denote overhead storage areas. Floorplans and specifications are also available online at Goltasca.com.



35F

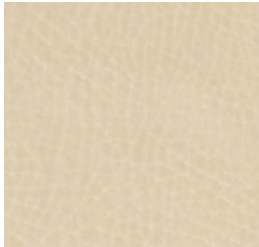
This generous floorplan features an Extendable Sectional Sofa, a mid-coach HDTV, two bathrooms, and a bedroom with twin wardrobes and a walk-around queen bed.

Choose from three fabric collections and two wood finishes, each with Satin Nickel hardware.

Inglewood



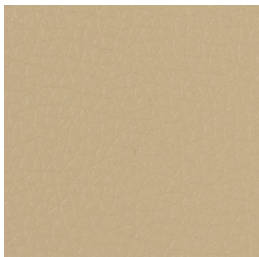
Main



Ultraleather



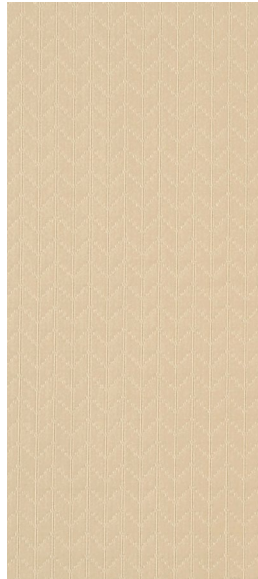
Accent



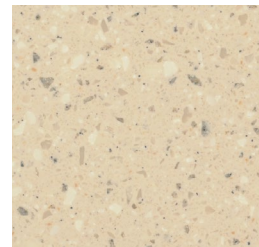
Leatherette
(26HE, 3IKE)



Bedspread



Wall Board



Corian Countertop
(Galley)



HD Laminate
Countertop
(26HE, 3IKE)



Carpet



Vinyl



Forest Cherry



Coffee-Glazed
Vienna Maple
(NA 26HE, 3IKE)

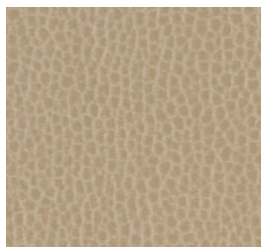
Winnebago Industries® reserves the right to change décor materials and specifications without notice or obligation.

Choose from three fabric collections and two wood finishes, each with Satin Nickel hardware.

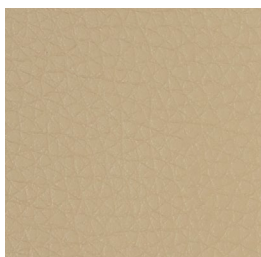
Brownstone



Main



Ultraleather



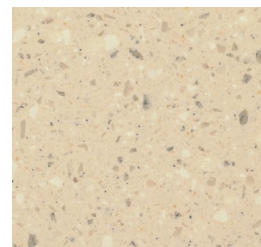
Leatherette
(26HE, 31KE)



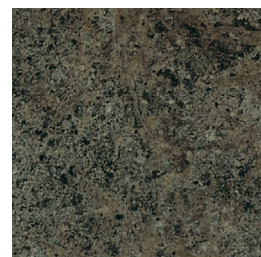
Accent



Bedspread



Corian Countertop
(Galley)



HD Laminate
Countertop
(26HE, 31KE)



Wall Board



Carpet



Vinyl



Forest Cherry



Coffee-Glazed
Vienna Maple
(NA 26HE, 31KE)

Winnebago Industries® reserves the right to change décor materials and specifications without notice or obligation.

Choose from three fabric collections and two wood finishes, each with Satin Nickel hardware.

Hudson



Main



Ultraleather



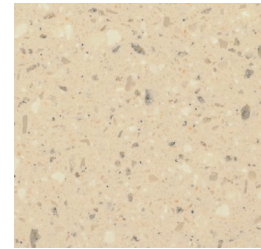
Accent



Leatherette
(26HE, 3IKE)



Bedspread



Corian Countertop
(Galley)



HD Laminate
Countertop
(26HE, 3IKE)



Wall Board



Carpet



Vinyl



Forest Cherry



Coffee-Glazed
Vienna Maple
(NA 26HE, 3IKE)

Winnebago Industries® reserves the right to change décor materials and specifications without notice or obligation.

The Sunstar comes with standard graphics, or upgrade to full-body paint (NA 26HE, 31KE).



Cobblestone (with taupe sidewalls)
STANDARD GRAPHICS
(26HE and 31KE only)



Tuscan Gold (with taupe sidewalls)
STANDARD GRAPHICS
(NA 26HE and 31KE)

The Sunstar comes with standard graphics, or upgrade to full-body paint (NA 26HE, 31KE).



Buckskin
FULL-BODY PAINT



Vintage Red
FULL-BODY PAINT



Cobalt
FULL-BODY PAINT



Paprika
FULL-BODY PAINT

Weights & Measures

	26HE	31KE	27N	30T	35B	35F
Length	26'11"	31'2"	28'3"	30'11"	36'4"	35'3"
Exterior Height¹	12'2"	12'3"	12'2"	12'2"	12'6"	12'6"
Exterior Width²	8'5.5"	8'5.5"	8'5.5"	8'5.5"	8'5.5"	8'5.5"
Exterior Storage³ (cu. ft.)	117	168	114	118	160	154
Awning Length	19'	17'	19'	17'	13'	16'
Interior Height	6'8"	6'8"	6'8"	6'8"	6'8"	6'8"
Interior Width	8'0.5"	8'0.5"	8'0.5"	8'0.5"	8'0.5"	8'0.5"
Freshwater Capacity⁴ (gal.)	54	64	64	78	93	74
Water Heater Capacity (gal.)	6	6	6	6	6	6
Holding Tank Capacity - Black/Gray⁴ (gal.)	43/38	41/57	43/53	41/42	41/46 & 41/51*	41/51 & 21/NA**
LP Capacity⁵ (gal.)	18	18	18	18	18	18
Fuel Capacity (gal.)	80	80	80	80	80	80
GCWR⁶ (lbs.)	23,000	23,000	23,000	23,000	26,000	26,000
GVWR (lbs.)	16,000	16,000	18,000	18,000	22,000	22,000
GAWR - Front (lbs.)	6,500	6,500	7,000	7,000	8,000	8,000
GAWR - Rear (lbs.)	11,000	11,000	12,000	12,000	15,000	15,000
Wheelbase	158"	190"	178"	190"	242"	228"

* The 35B uses separate black and gray tanks for each bathroom

** The 35F uses separate black tanks for each bathroom

Optional Interior Upgrade Package

(27N, 30T, 35B, 35F) soft vinyl ceiling, galley backplash, flip-up countertop extension (NA 27N), Dream Dinette™ dining table, range cover, two sink covers, raised-panel refrigerator inserts, throw pillow(s)

Cab Conveniences

Cab seats adjustable armrests, lumbar support and multi-adjustable slide/recline/swivel

3-point seat belts

AM/FM stereo CD player

Rearview Monitor System w/color camera, one-way audio and color LCD monitor

Chassis/house battery radio power switch

Power steering w/tilt wheel

Exterior power mirrors w/defrost

Cab wraparound curtain

Cruise control

12-volt powerpoints

Map light(s)

Sunvisors

C.B. wire prep (NA 26HE, 31KE)

Optional Equipment

Sideview video camera system w/color monitor (requires Rearview Monitor System) (NA 26HE, 31KE)

6-way power driver seat (NA 26HE, 31KE)

Passenger seat w/footrest (NA 26HE, 31KE)

Dual-speed defroster fans (NA 26HE, 31KE)

AM/FM stereo w/CD/DVD player, input jack, Bluetooth™ remote and alarm clock (NA 26HE, 31KE)

Dash workstation (NA 26HE, 31KE)

Interior

32" HDTV (26HE, 31KE, 30T, 35F)

42" HDTV (27N, 35B)

Amplified digital TV antenna system

Key-activated slideroom master lock switch

Satellite system ready (NA 26HE, 31KE)

MCD solar/blackout roller shades (lounge, dinette, bedroom) (MCD blackout roller shades 26HE, 31KE)

CHASSIS

Ford® F53 Chassis 362-hp 3-valve Triton® V10 engine SEFI, TorqShift™ 5-speed automatic transmission w/tow/haul, 175-amp. alternator

Hydraulic brakes w/ABS

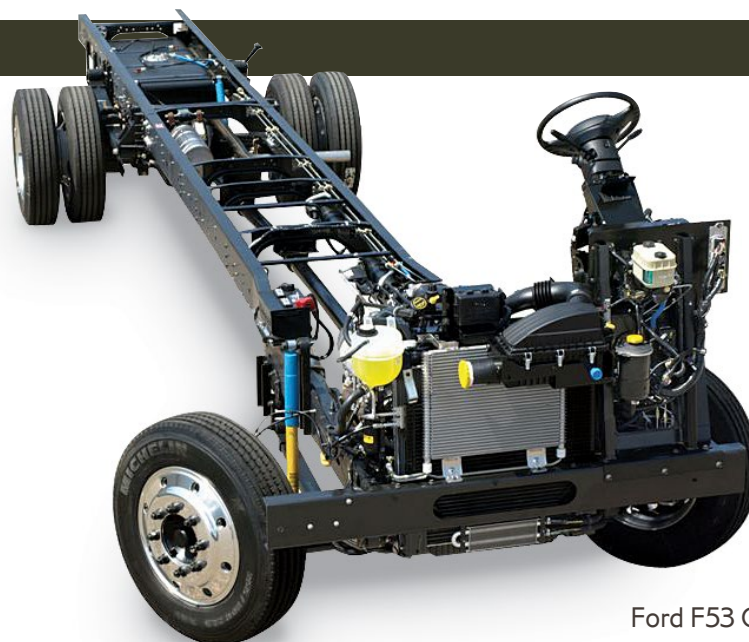
Trailer Hitch⁶ 5,000-lb. drawbar/500-lb. maximum vertical tongue weight

7-pin connector

Stainless steel wheel liners w/19.5" tires (26HE, 31KE, 27N, 30T)

Stylized aluminum wheels w/22.5" tires (35B, 35F)

Automatic hydraulic leveling jacks



Ford F53 Chassis

OnePlace® systems center

Powered ventilator fan (lounge, non-power 26HE, 31KE)

Powered ventilator roof vent (27N bedroom)

Powered roof vent (bath)

Tinted windows

LED lights (NA 26HE, 31KE)

Electric fireplace (35F)

Optional Equipment

46" HDTV (27N, 35B)

StudioLoft™ (NA 26HE)

Dining table/buffet/chairs w/retractable 39" HDTV (30T)

32" HDTV (27N, 35B)

Tinted, dual-glazed, thermo-insulated windows (NA 26HE, 31KE)

Vinyl floorcovering (excludes cab, slideroom floor and bedroom) (30T)

Galley

Corian® countertops (NA 26HE, 31KE)

Laminate countertops (26HE, 31KE)

2-door refrigerator/freezer

Microwave oven (26HE, 31KE, 30T)

Microwave oven w/range fan (27N, 35B, 35F)

3-burner range w/oven (26HE, 31KE)

3-burner range top w/storage below (27N, 30T, 35B, 35F)

Vented range hood (26HE, 31KE, 30T)

Optional Equipment

3-burner range w/oven (27N, 30T, 35B, 35F)

Microwave/convection oven (30T)

Microwave/convection oven w/range fan (27N, 35B, 35F)

4-door refrigerator/freezer w/icemaker (35B, 35F)

Bath

Laminate countertop

Flexible showerhead

Textured glass shower door

Skylight

Bedroom

Queen bed w/innerspring mattress and storage below

Bedsread (26HE, 31KE)

Bedsread, pillows and shams (27N, 30T, 35B, 35F)

Storage area below bed

Bunk beds w/foam mattresses, mattress covers and privacy curtains (35B)

Optional Equipment

Two DVD players w/10.1" LCD monitors and headphones (35B bunk beds)

22" HDTV w/cable wall input (27N, 30T, 35F)

26" HDTV w/cable wall input (35B)

Exterior

Premium taupe-colored high-gloss sidewall skin

Automatic entrance door steps

Powered patio awning

Mud flaps

Porch light

Lighted storage compartments (in select compartments)

Ladder (NA 26HE, 31KE)

Optional Equipment

Lower front protective mask (w/full-body paint only)

Entertainment Center AM/FM stereo, CD player, remote, AC duplex, DC receptacle, removable TV table, speakers and lockable compartment (30T)

Entertainment Center 32" HDTV w/remote, AM/FM stereo w/DVD player w/remote, speakers (27N, 35B, 35F)

Heating & Cooling System

14,800 BTU roof-mount air conditioner (26HE, 31KE, 27N, 30T)

Two high-efficiency roof-mount air conditioners w/Energy Management System (35B, 35F)

30,000 BTU low-profile furnace (26HE, 31KE, 27N, 30T)

40,000 BTU low-profile furnace (35B, 35F)

Optional Equipment

A/C heat pump (27N, 30T)

Two high-efficiency A/C heat pumps (35B, 35F)

Electrical System

AC/DC load center, 45-amp. converter/charger (26HE, 31KE, 27N, 30T)

AC/DC electrical distribution system, 45-amp. converter/charger (35B, 35F)

30-amp. power cord (26HE, 31KE, 27N, 30T)

50-amp. power cord, shoreline/generator automatic changeover switch (35B, 35F)

PowerLine® Energy Management System (27N, 35B, 35F)

4,000-watt Cummins Onan® MicroQuiet™ gas generator (26HE, 31KE, 27N, 30T)

5,500-watt Cummins Onan Marquis Gold™ gas generator (35B, 35F)

Two deep-cycle Group 24 batteries

Battery disconnect system (chassis and coach)

Automatic dual battery charge control

Auxiliary start circuit

Exterior TV jack and AC duplex receptacle

Optional Equipment

1,000-watt AC/DC inverter w/remote panel (NA 26HE, 31KE)

Plumbing System

LPG accessory connection (patio area) (NA 26HE, 31KE)

Holding-tank flushing system (black tank only) (NA 26HE, 31KE)

Service Center colored labels, cable TV input, pressurized city water hookup w/diverter valve, drainage valves, exterior wash station w/pump switch (NA 26HE, 31KE), portable satellite dish hookup, power cord, 10' sewer hose

6-gallon LP water heater w/electronic ignition (26HE, 31KE)

6-gallon 110V/LP water heater w/motoraid (27N, 30T, 35B, 35F)

Heated holding-tank compartment

Permanent-mount LP tank w/gauge

On-demand water pump

TrueLevel™ holding-tank monitoring system

Winterization Package water heater bypass valve and siphon tube

Gravity tank fill w/lockable door (NA 26HE, 31KE)

Safety

Child seat tether anchor (forward facing dinette seat)

LP, smoke and carbon monoxide detectors

10 BC fire extinguisher

Ground fault interrupter

High-mount brake lamp

Warranty⁷

12-month/15,000-mile basic limited warranty⁸

36-month/36,000-mile limited warranty on structure⁸

10-year limited parts and labor warranty on roof skin⁸

- The height of each model is measured to the top of the tallest standard feature and is based on the curb weight of a typically equipped unit. The actual height of your vehicle may vary by several inches depending on chassis or equipment variations. Please check with your dealer for further information.
- The floorplans feature a wide-body design – over 96" in making your purchase decision, you should be aware that some states restrict access on some or all state roads to 96" in body width. Before making your purchase decision, you should confirm the road usage laws in the states of interest to you.
- The load capacity of your motor home is designated by weight, not by volume, so you cannot necessarily use all available space when loading your motor home.
- Capacities are based on measurements prior to tank installation. Slight capacity variations can result due to installation applications.
- Capacities shown are tank manufacturer's listed water capacity (W.C.). Actual filled LP capacity is 80% of listing due to overfilling prevention device on tank.
- Actual towing capacity is dependent on your particular loading and towing circumstances which includes the GVWR, GAWR, and GCWR as well as adequate trailer brakes. Please refer to the Operator's Manual of your vehicle for further towing information.
- See separate chassis warranty.
- See your dealer for complete warranty information.

NA Not Available

Not all items available in combination. See dealer for details.

Winnebago Industries® continuing program of product improvement makes specifications, equipment, model availability, and prices subject to change without notice. Published content reflects the most current product information at time of printing. Please consult your dealer for individual vehicle features and specifications.

GOITASCA.COM
HAS ALL THE ANSWERS



Visit **GoItasca.com** on your computer, smartphone or tablet for the latest product information and updates.

COMMITTED TO SERVICE

 **PREFERRED CARE PROGRAM**

We back our motorhomes with best-in-class support both before and after the sale:

- 12-month/15,000-mile basic warranty
- 36-month/36,000-mile limited warranty on structure
- 10-year limited parts-and-labor warranty on roof skin
- Complimentary 24-hour roadside assistance program



TRIPSaver
FAST TRACK PARTS

- TripSaver® Fast Track Parts guarantees that in-stock warranty parts ship directly to your dealer within 24 hours
- National dealer service network



WIT CLUB

JOIN THE CLUB, JOIN THE FUN

As an Itasca motorhome owner, you are invited to join the WIT Club. It's a great way to take full advantage of your new coach and meet fun-loving WIT Club members from across the country who make motorhome adventures a way of life.



Members enjoy:

- Caravans and rallies
- Newsletters
- Local and state group activities
- RV travel benefits

See more on **WITclub.com**

WIT CLUB GNR
WILD WEST
20  13



GRAND NATIONAL RALLY

Each year, thousands of Winnebago Industries motorhome owners descend upon Forest City, Iowa, for the Grand National Rally. Rally-goers connect with old friends and enjoy concerts, tours, activities, and more in a week-long celebration of the motorhome lifestyle. Join us this July for a week you'll never forget.