

REYO



Why Reyo?

- Mercedes-Benz® Sprinter chassis
- Fuel-efficient and easy to maneuver
- Threshold™ Quiet RV Door and retractable screen door
- MCD solar/blackout shades
- Available StudioLoft™ (25P & 25T)
- HDTVs
- Ultraleather™ furniture
- Infotainment Center with Rand McNally RV GPS
- Swivel cab seats



ON THE COVER: 25P Sandalwood Full-Body Paint

25P Whitesand with Sunset Cherry Cabinetry

A MOTORHOME LIKE NO OTHER

The Itasca Reyo® is no ordinary Class A motorhome. With the powerful, yet nimble, Mercedes-Benz® Sprinter chassis as its foundation, the Reyo offers a unique combination of fun and fuel-efficiency every time you grab the wheel. Innovative features such as the StudioLoft™ and Flex Bed System make the most of the available space, allowing more room for luxury features in the

three 25-foot models. Joining the popular 25T and 25Q is the all-new 25P with a spacious lounge and large rear storage area. All models are built to Winnebago Industries® legendary quality standards and feature bold exterior styling and three cabinet wood choices that set you apart from the crowd. It's time to rethink what is possible in a Class A coach. Be extraordinary in an Itasca Reyo.



RECOGNIZED QUALITY The RV Dealers Association bestows its annual Quality Circle Award based on dealer ratings to manufacturers that provide exceptional products, service and support. Only one manufacturer has received this award for seventeen consecutive years: Winnebago Industries®.

BEST IN CLASS

See how Winnebago Industries takes motorhome design and function to the next level, and why we've earned the right to be called the Most Recognized Name in Motorhomes.®



Click on this icon throughout the brochure to link to more information on the web.



Enjoy exceptionally comfortable dining in the **Benchmark**® full comfort dinette (25P) with its premium innerspring seating. The seats tilt up providing easy access to storage underneath and easily convert into a comfortable sleeping space.



The **OnePlace**® **Systems Center** lets you check major systems at the touch of a button.



Driving in luxurious comfort is ensured with the **Ultraleather**™ **Cab Seats** that also swivel and become part of the lounge.



You can set the level of light and privacy you prefer with the smoothly retracting **MCD roller shades**.



Turn your cab into a second bedroom with the convenient **StudioLoft**™ that instantly drops down from the cab ceiling for another sleeping space (available 25P, 25T).



25P Whitesand with Sunset Cherry Cabinetry

Whether it's game time, dinnertime, or hangout time, the Reyo creates a pleasant environment for any event. All seating locations offer a great view of the HDTV, which is connected to the coach stereo system via Bluetooth™ so you can stream your favorite tunes. For dining flexibility, the 25Q and 25T feature a moveable pedestal table that can be placed in front of the sofa or cab seats that swivel to face the lounge. Standard premium MCD solar/blackout roller shades let you control how much light and privacy you need. With interior LED lighting throughout the coach, energy consumption is reduced by up to 70 percent.



HDTV



MCD Solar/Blackout Roller Shades

Small meals or big meals, no problem. Glass covers over the deep stainless steel sink and range top give you added workspace to prepare. With the microwave/convection oven you can make your favorite dishes with ease. The double-door Norcold® refrigerator/freezer offers plenty of space for all your cold storage needs.



25Q Galley



Refrigerator/Freezer



Full-Extension Drawer Slides



Sink/Range Top w/Covers Down



Sink/Range Top w/Covers Up

No matter your preference for sleeping arrangements, the Reyo offers three bathroom and bedroom choices, each with a 22" HDTV. A corner double bed and wardrobe are available in the new 25P floorplan. Choose the 25Q with its walk-around queen bed and mid-coach bath. If you need more versatility, the Flex Bed System in the 25T converts twin beds into a queen and offers an available StudioLoft™ drop-down bed in the cab. This floorplan also offers a mid-coach bath with strikingly stylish angles.



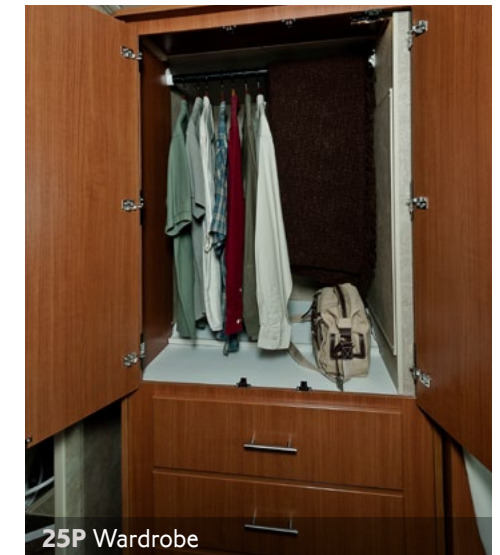
25P Bedroom



25P Bathroom



25P Under Bed Storage



25P Wardrobe



Dash

Get behind the wheel and you will appreciate superior handling and fuel efficiency of the Reyo. The robust engine and powered features are courtesy of the Mercedes-Benz® Sprinter chassis. When it comes to the latest in-dash communications technology, the Reyo really delivers. An Infotainment Center with Rand McNally RV GPS offers a 6" color touch screen monitor, turn-by-turn voice guidance, AM/FM radio w/CD/DVD player, Bluetooth™, and SiriusXM™ (subscription not included).



Powered Mirrors



Infotainment Center w/Rand McNally RV GPS

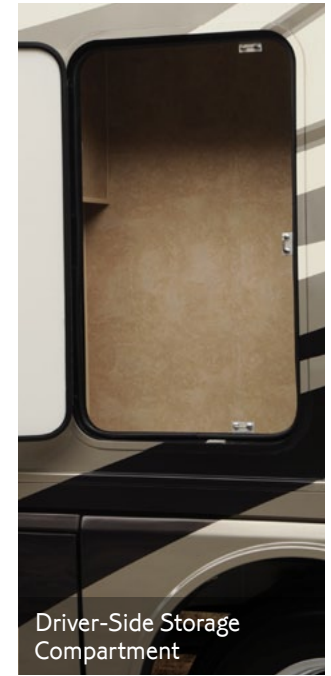
It's never been easier to enjoy the peace and quiet of the open road. That's because the Threshold™ Quiet RV Door was inspired by the seal design of aircraft doors to keep wind and road noise out. But when you want to let a fresh breeze in while keeping bugs out, there's a retractable screen door. For outside relaxing, the electric patio awning provides comfortable shade. When it's time to clean up, use the exterior service center wash station.



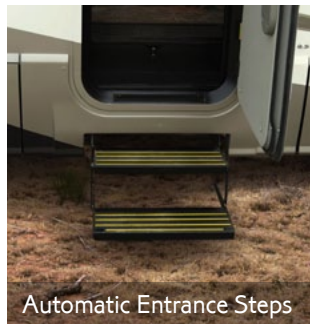
Electric Patio Awning w/LED Lighting



Available Driver-Side Door (NA w/StudioLoft)



Driver-Side Storage Compartment



Automatic Entrance Steps



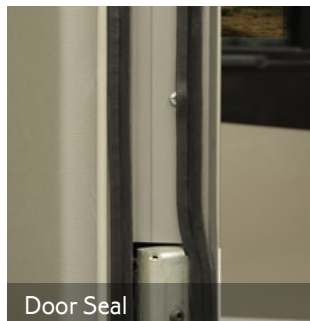
Threshold™ Quiet RV Door



Retractable Screen Door



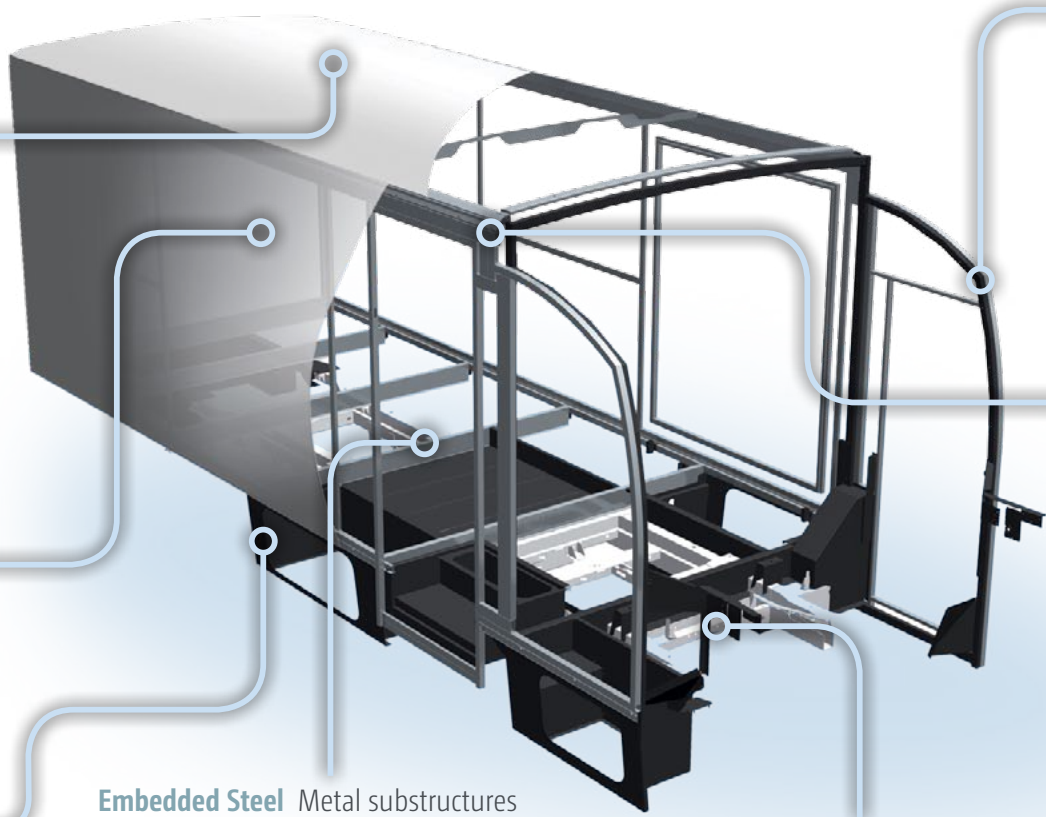
Exterior Service Center w/Exterior Wash Station



Door Seal



Available Stylized Aluminum Wheels



Fiberglass Roof

The crowned, one-piece fiberglass roof is backed by a 10-year parts-and-labor roof skin warranty.

Rubber Can't Cut It

Rubber roofs used by competitors can streak and degrade over time.

Thermo-Panel® Sidewalls

By layering fiberglass and high-density block foam insulation with welded aluminum support structures, we create some of the industry's strongest, most durable and lightweight sidewalls.

E-Coating

An electrodeposition coating helps protect critical steel components.

Embedded Steel

Metal substructures embedded into the sidewall provide solid attachment points to keep cabinets and appliances mounted securely in place.

Solid Framework

Aluminum extruded in our own facility to our exacting standards creates an extremely strong and solid structural framework.

Laser-Cut Tubing

Precision laser cutters create precise joints in structural steel that are stronger and require less welding.



Interlocking Joints

Specially engineered interlocking joints connect the floor, sidewalls and roof where competitors often rely on simple screws to bear the weight.

**SUPER
STRUCTURE**

BUILT TO LAST

Every coach—from our smallest Class C to our largest diesel pusher model—is built to Winnebago Industries'® legendary SuperStructure® construction standards. It's a process developed and refined over more than 50 years of building some of the strongest, most durable coaches in the industry.

The Foundation of Fun

The Reyo's revolutionary design starts with the versatile Mercedes-Benz Sprinter F50 chassis. A powerful Mercedes-Benz turbo-diesel engine makes the Reyo a coach that is both fun to drive and a pleasure to call home. Adaptive ESP® electronic

stability control delivers more responsive control with ABS, traction control (ASR) and load adaptive control (LAC) that calculates the vehicle's mass and center of gravity to ensure optimum stability.

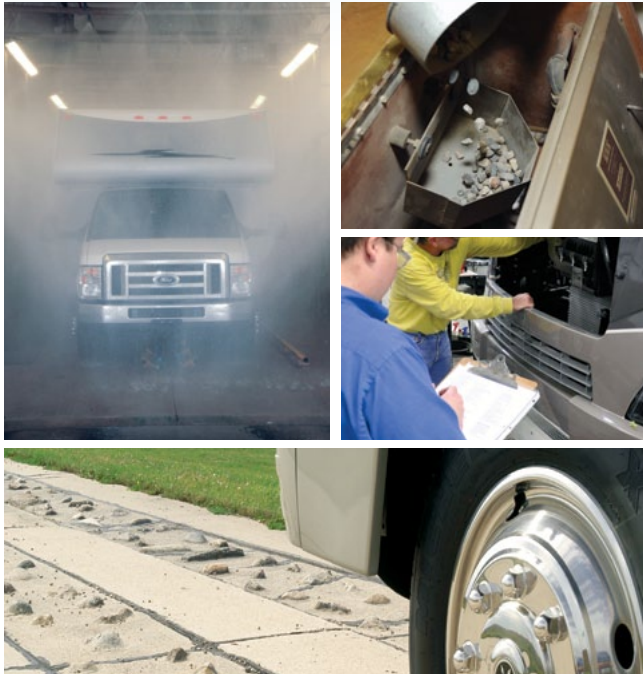


Mercedes-Benz® Sprinter F50 Chassis

- Mercedes-Benz 3.0L Turbo-Diesel Engine
- 5-Speed Automatic Transmission
- 11,030-lb. GVWR
- Adaptive ESP Technology
- 220-amp. Alternator
- 5,000-lb.⁵ Hitch
- Available Stylized Aluminum Wheels
- Most fuel-efficient Class A motorhome with unparalleled estimated fuel economy of 16+ miles per gallon*

*Fuel efficiency will vary with driving conditions and individual driving practices.

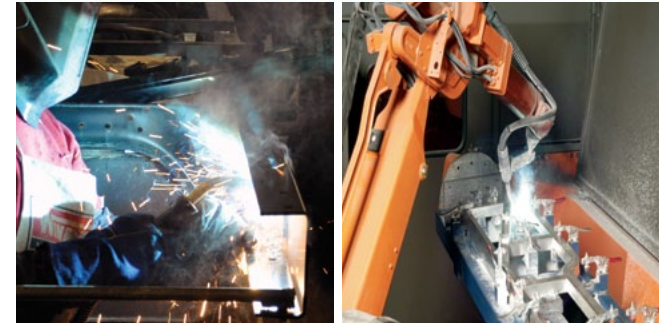
TESTING Before rolling out of our factories, every coach undergoes an extensive 113-point inspection. Each coach also passes a high-pressure water test that simulates rain at a rate of 50-inches per hour to check for leaks. During the design process, computer simulations, our physical testing center and rigorous test track ensure each model is built to last.



DETAILS At Winnebago Industries, we treat the features you can't see with the same care as the ones you can. Look in the access panels of some of our competitors' coaches and you'll see loose insulation and wires haphazardly strewn about. Winnebago Industries maintains a clean fit and finish throughout so your coach will last for the long haul.



BUILT IN-HOUSE We extrude our own aluminum. We rotocast our own plastic components. In fact, we manufacture most of our own parts so they are designed to fit the space, rather than fitting the space to an awkward off-the-shelf component size.



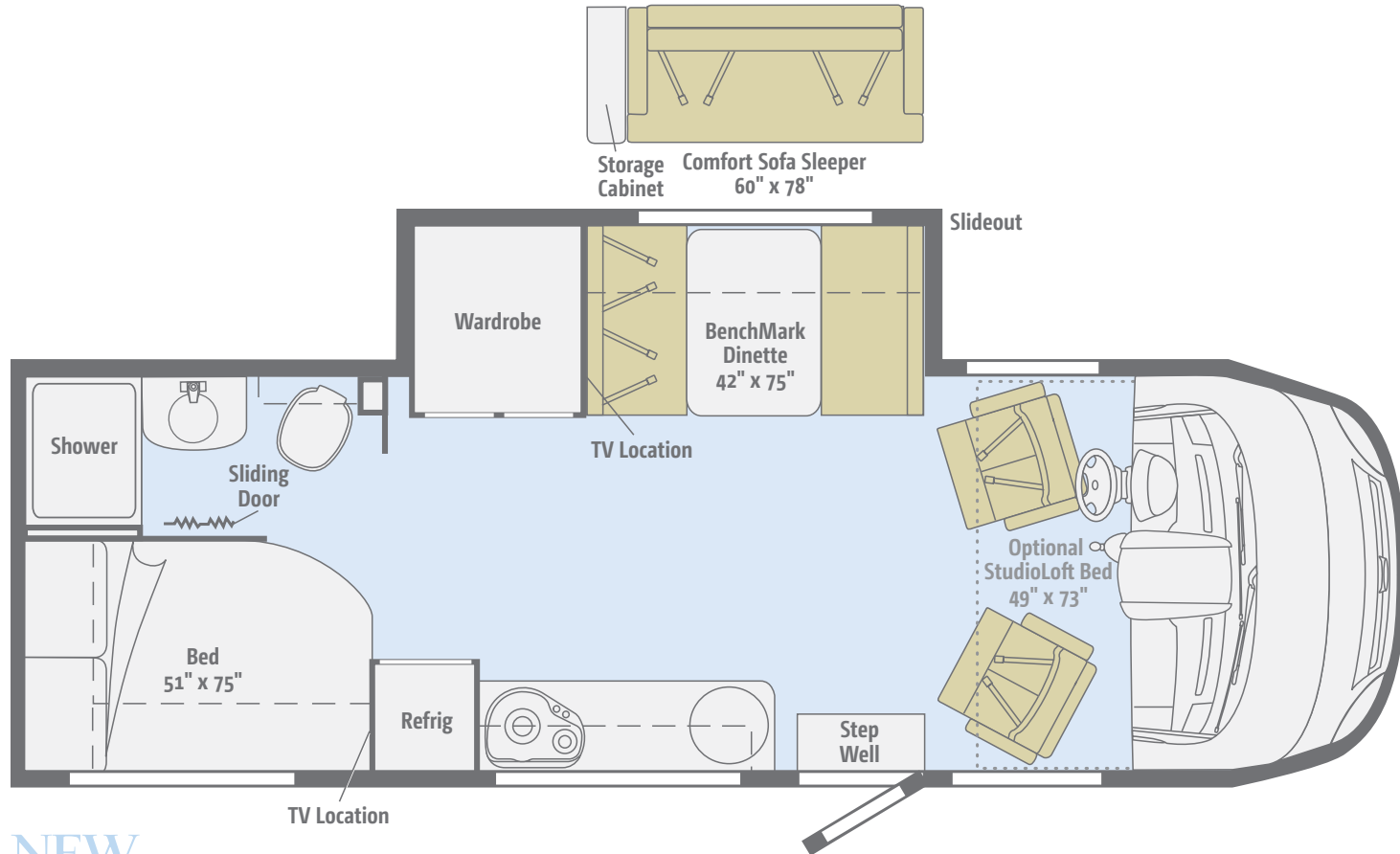
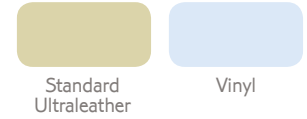
**SUPER
STRUCTURE**
BUILT TO LAST

Visit BetterBuiltRVs.com to gain real insight into what goes into a Winnebago Industries motorhome.

TAKE A TOUR We're proud of our processes, state-of-the-art facilities and the people who make Winnebago Industries number one. We invite you to visit our complex in Forest City, Iowa, for a first-hand look at the dedication and technology behind every motorhome we build.



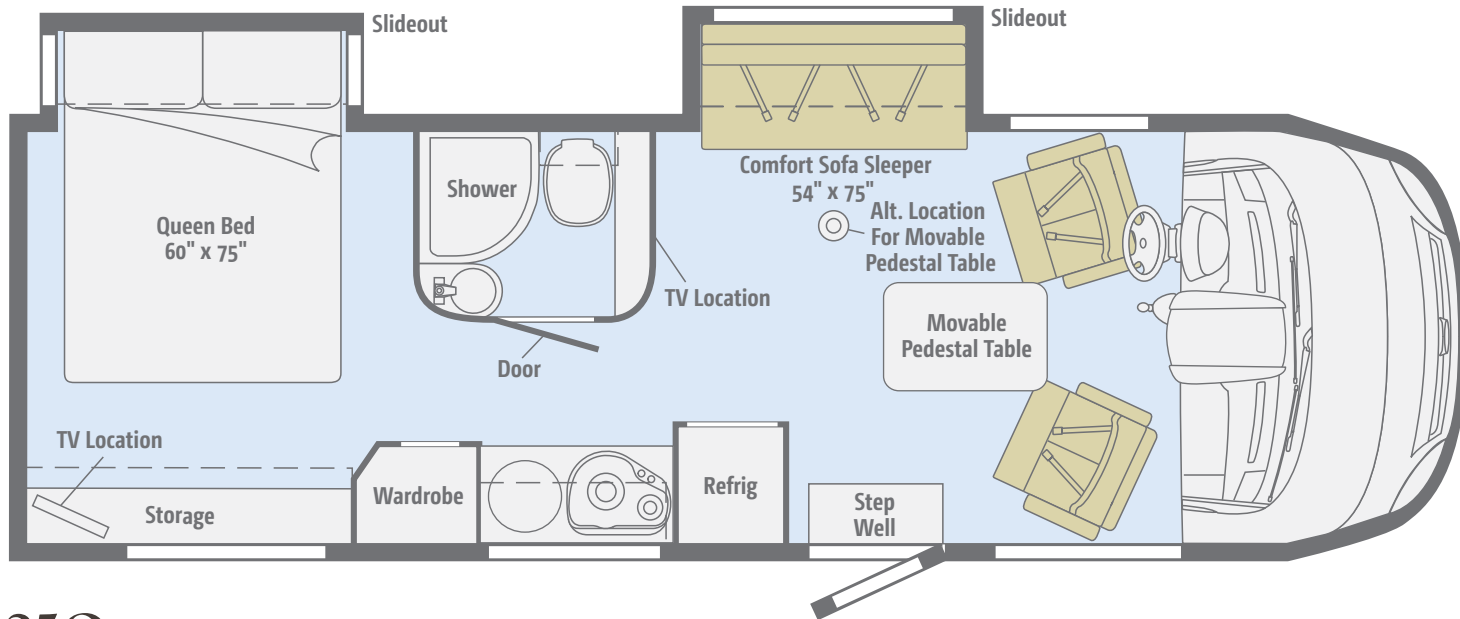
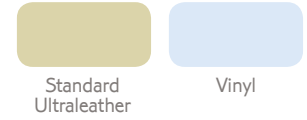
Dimensions shown are for sleeping space only and may vary due to styling differences. Dashed lines denote overhead storage areas. Floorplans and specifications are also available online at Goltasca.com.



NEW 25P

The new 25P bedroom offers a corner double bed and large wardrobe with three lower drawers, plus a tambour-style sliding bath door.

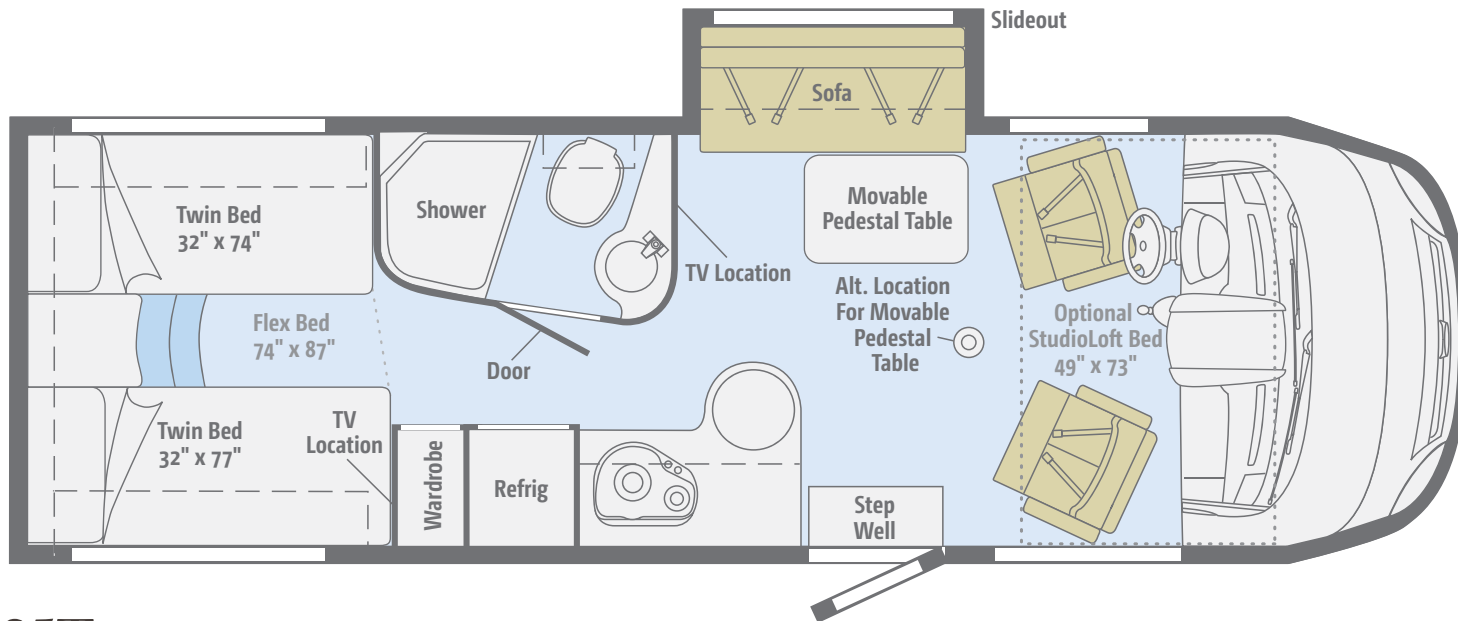
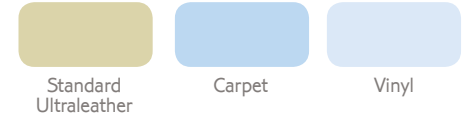
Dimensions shown are for sleeping space only and may vary due to styling differences. Dashed lines denote overhead storage areas. Floorplans and specifications are also available online at Goltasca.com.



25Q

Slideouts in the lounge and bedroom create more open living spaces with the Comfort Sofa Sleeper and a walk-around queen bed.

Dimensions shown are for sleeping space only and may vary due to styling differences. Dashed lines denote overhead storage areas. Floorplans and specifications are also available online at Goltasca.com.



25T

This versatile floorplan lets you configure sleeping arrangements how you like them with the Flex Bed System and available StudioLoft.™

Choose from three fabric collections and three wood finishes, each with Satin Nickel hardware.

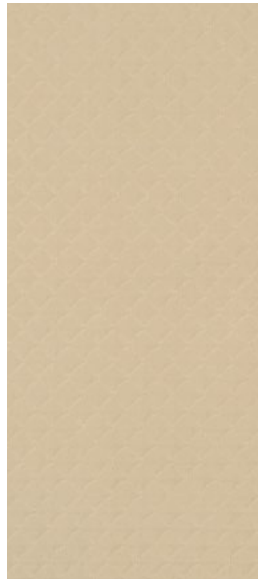
Tango



Ultraleather



Accent



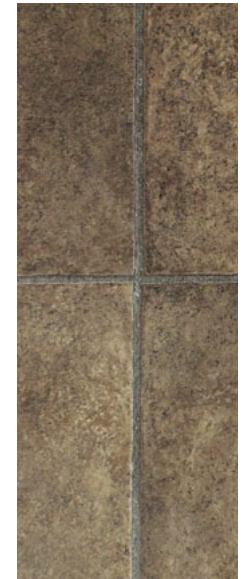
Bedspread



Laminate
Countertop



Wall Board



Vinyl



Aosta Cherry



Sunset Cherry



Marbella Cherry

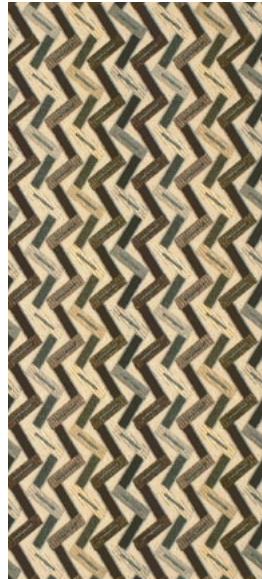
Winnebago Industries® reserves the right to change décor materials and specifications without notice or obligation.

Choose from three fabric collections and three wood finishes, each with Satin Nickel hardware.

Incline



Ultraleather



Accent



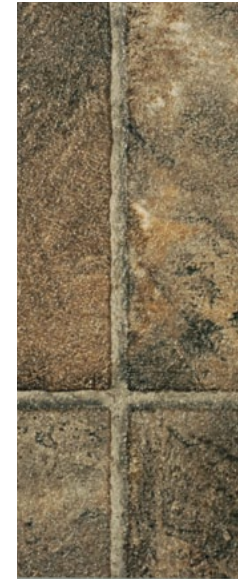
Bedspread



Laminate
Countertop



Wall Board



Vinyl



Aosta Cherry



Sunset Cherry



Marbella Cherry

Winnebago Industries® reserves the right to change décor materials and specifications without notice or obligation.

Choose from three fabric collections and three wood finishes, each with Satin Nickel hardware.

Whitesand



Ultraleather



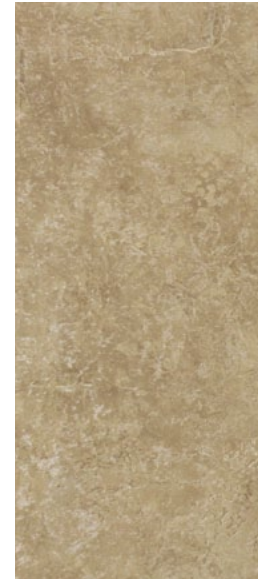
Accent



Bedspread



Laminate
Countertop



Wall Board



Vinyl



Aosta Cherry



Sunset Cherry



Marbella Cherry

Winnebago Industries® reserves the right to change décor materials and specifications without notice or obligation.

Choose from two deluxe graphics packages and four full-body paint options.



Bright Platinum
DELUXE GRAPHICS



Mojave Mist
DELUXE GRAPHICS

Choose from two deluxe graphics packages and four full-body paint options.



Sandalwood
FULL-BODY PAINT



Wine
FULL-BODY PAINT



Polished Pewter
FULL-BODY PAINT



Amber
FULL-BODY PAINT

Weights & Measures

	25P	25Q	25T
Length	25'5"	25'5"	25'5"
Exterior Height ¹	11'	11'	11'
Exterior Width	7'6"	7'6"	7'6"
Exterior Storage ² (cu. ft.)	70	54	92
Awning Length	16'	16'	16'
Interior Height	6'5"	6'5"	6'5"
Interior Width	7'3"	7'3"	7'3"
Freshwater Tank Capacity ³ (gal.)	29	27	28
Water Heater Capacity (gal.)	6/Continuous ⁶	6	6
Holding Tank Capacity - Black/Gray ³ (gal.)	34/40	40/30	36/36
LP Capacity ⁴ (gal.)	13	13	13
Fuel Capacity (gal.)	26.4	26.4	26.4
GCWR ⁵ (lbs.)	15,250	15,250	15,250
GVWR (lbs.)	11,030	11,030	11,030
GAWR - Front (lbs.)	4,410	4,410	4,410
GAWR - Rear (lbs.)	7,720	7,720	7,720
Wheelbase	170"	170"	170"

Cab Conveniences

- Cab Seats** armrest, adjustable lumbar support, swivel/slide, recline
- Power steering w/tilt and telescoping wheel**
- Power door lock w/remote for main entry door**
- Seat belts**
- Dash appliqué package**
- Removable one-piece fitted carpet liner**
- 12-volt powerpoints**
- Power mirrors w/defrost and built-in sideview video camera system**
- Cruise control**
- Chassis/house battery radio power switch**
- Sunvisors**
- Front wraparound curtain**

Infotainment Center with Rand McNally RV GPS 6" touch screen color monitor w/split screen function, Rand McNally RV GPS safe & easy routing, amenities & tools, trips & content, turn-by-turn voice guidance, AM/FM radio w/CD/DVD player, handheld remote, SiriusXM™ (subscription not included), compass, outside temperature, iPod®/iPhone® audio integration, Bluetooth™, color rearview camera

CHASSIS

- Mercedes-Benz® Sprinter F50 Chassis**
- 188-hp Mercedes-Benz 3.0L 6-cylinder turbo-diesel engine**
- 5-speed automatic transmission w/Tip Shift technology**
- Hydraulic brakes w/ABS**
- Adaptive ESP® technology**
- 220-amp. alternator**
- Trailer Hitch⁵ 5,000-lb. drawbar/500-lb. maximum vertical tongue weight w/7-pin connector**
- Stainless steel wheel liners**

Optional Equipment
Stylized aluminum wheels



Mercedes-Benz®
Sprinter F50 Chassis

Interior

- OnePlace® systems center**
- Key-activated slideroom master lock switch**
- Soft vinyl ceiling**
- Privacy curtain**
- Stereo System** AM/FM, alarm clock, CD/DVD player, Bluetooth input jack
- 26" HDTV** (25Q, 25T)
- 32" HDTV** (25P)
- Satellite system ready**
- Tinted windows**
- LED ceiling lights** (coach)

MCD solar/blackout roller shades

Amplified digital TV antenna system

Powered roof vent (bath)

Roof vent w/powerful ventilator fan (galley 25P, 25Q)

Optional Equipment

StudioLoft™ and powered sunvisor (25P, 25T) (NA w/optional driver-side door)

Satellite TV antenna system

Dual-pane coach windows w/built-in screen and shade

Galley

Microwave/convection oven

Vented range hood (25T)

2-burner range top w/glass cover

Norcold® double-door refrigerator/freezer

Stainless steel sink w/glass cover and folding faucet

Laminate countertops

Decorative backsplash

Water filtration system w/cold water faucet

Bath

Flexible showerhead

Retractable, self-cleaning shower screen (25P, 25T)

Shower curtain (25Q)

Skylight

Bedroom

Flex Bed System twin beds/queen bed w/foam mattress, pillows w/shams, and access to storage below (25T)

Double bed w/headboard, foam mattress, mattress cover, pillow shams (25P)

Queen bed w/headboard, innerspring mattress, pillows, shams, bedspread, and access to storage below (25Q)

22" HDTV

Exterior

Premium high-gloss sidewall skin

16' electric patio awning w/LED lighting

Threshold™ Quiet RV Door

Retractable screen door

Automatic entrance door steps

Lighted storage compartment (in select compartments)

Mud flaps (rear)

Porch light

Stepwell light

Golf bag storage compartment w/framework and straps to secure 2 golf bags

Optional Equipment

Driver-side door w/power lock and power window (NA w/StudioLoft)

Lower front protective mask (requires full-body paint)

Heating & Cooling System

14,800 BTU roof-mount air conditioner w/heat pump

20,000 BTU low-profile furnace

Electrical System

Service Center cable TV input, 30-amp. power cord, portable satellite dish hook-up

AC/DC load center, 45-amp. converter/charger

Auxiliary start circuit

Battery disconnect system (coach)

2 deep-cycle, Group 24 RV batteries

Automatic dual-battery charge control

3,600-watt Cummins Onan® MicroQuiet™ LP generator

1,000-watt DC/AC inverter

Exterior TV jack and AC duplex

Optional Equipment

3,200-watt Cummins Onan diesel generator

Plumbing System

Service Center color-coded labels, city water hookup/tank diverter fill, drainage valves, 10' sewer hose, exterior wash station w/lighted pump switch

TrueLevel™ holding-tank monitoring system

6-gallon water heater w/electric ignition, 110 V/LP

Winterization Package water heater bypass valve and siphon tube

On-demand water pump

Permanent-mount LP tank w/remote fill

Heated drainage system

Water tank fill w/lockable door

Optional Equipment

Tankless water heater (25P)

Safety

Child seat tether anchor (25P)

LP, smoke and carbon monoxide detectors

10 BC fire extinguisher

Ground fault interrupter

High-mount brake lamps

Daytime running lamps

Fog lamps

Warranty⁷

12-month/15,000-mile basic warranty⁸

36-month/36,000-mile limited warranty on structure⁸

10-year limited parts-and-labor warranty on roof skin⁸

- 1 The height of each model is measured to the top of the tallest standard feature and is based on the curb weight of a typically equipped unit. The actual height of your vehicle may vary by several inches depending on chassis or equipment variations. Please contact your dealer for further information.
- 2 The load capacity of your motorhome is designated by weight, not by volume, so you cannot necessarily use all available space when loading your motorhome.
- 3 Capacities are based on measurements prior to tank installation. Slight capacity variations can result due to installation applications.
- 4 Capacities shown are tank manufacturer's listed water capacity (W.C.). Actual filled LP capacity is 80% of listing due to overfilling prevention device on tank.
- 5 Actual towing capacity is dependent on your particular loading and towing circumstances which includes the GVWR, GAWR, and GCWR, as well as adequate trailer brakes. Please refer to the Operator's Manual of your vehicle for further towing information.
- 6 For vehicles manufactured 5/9/13 or later.
- 7 See separate chassis warranty.
- 8 See your dealer for complete warranty information.

Winnebago Industries® continuing program of product improvement makes specifications, equipment, model availability, and prices subject to change without notice. Published content reflects the most current product information at time of printing. Please consult your dealer for individual vehicle features and specifications.

GOITASCA.COM
HAS ALL THE ANSWERS



Visit **GoItasca.com** on your computer, smartphone or tablet for the latest product information and updates.

COMMITTED TO SERVICE

 **PREFERRED CARE PROGRAM**

We back our motorhomes with best-in-class support both before and after the sale:

- 12-month/15,000-mile basic warranty
- 36-month/36,000-mile limited warranty on structure
- 10-year limited parts-and-labor warranty on roof skin
- Complimentary 24-hour roadside assistance program



TRIPSaver
FAST TRACK PARTS

- TripSaver® Fast Track Parts guarantees that in-stock warranty parts ship directly to your dealer within 24 hours
- National dealer service network

 **Premium ROADSIDE ASSISTANCE**



WIT CLUB

JOIN THE CLUB, JOIN THE FUN

As an Itasca motorhome owner, you are invited to join the WIT Club. It's a great way to take full advantage of your new coach and meet fun-loving WIT Club members from across the country who make motorhome adventures a way of life.



Members enjoy:

- Caravans and rallies
- Newsletters
- Local and state group activities
- RV travel benefits

See more on **WITclub.com**

WIT CLUB GNR
WILD WEST
20  13



GRAND NATIONAL RALLY

Each year, thousands of Winnebago Industries motorhome owners descend upon Forest City, Iowa, for the Grand National Rally. Rally-goers connect with old friends and enjoy concerts, tours, activities, and more in a weeklong celebration of the motorhome lifestyle. Join us this July for a week you'll never forget.