

Your Venture Starts Here.

SPORT TREK

SPORT TREK
Lightweight Travel Trailers & Toy Haulers



Lightweight Travel Trailers & Toy Haulers

MODEL ST250VRK



Top: The bedroom features the comfort of a queen size Sleep Tight mattress enhanced with a padded designer headboard. Two large shirt closets with built-in shelf and deep overhead cabinets provide ample storage.

Bottom: More convenience was designed into the bathroom by adding extra shelves to the mirrored medicine cabinet and under sink storage housed in an attractive vanity. The shower includes multiple molded shelves for toiletries.



When we set out to design a new kind of travel trailer, we turned to the experts – our customers. They told us they wanted a higher level of comfort and functionality as well as specific features to enhance their RV experience. Moreover, they needed an affordable price and the durability to withstand the demands of the active camper. We listened, applied what we learned, and SportTrek was born.



MODEL ST320VIK



Top: There's plenty of room for the kids in the Junior Suite furnished with a day bed and sleeping bunk. The extra large cabinet doors make it easier for kids to stow their gear.

Bottom: The Campfire Cafe lets you enjoy the campfire with the convenience of a pull-out cook top, refrigerator, deep sink, and extra storage.



This family inspired model contains something for everyone – a lovely island kitchen for Mom, a comfortable 82" sofa for Dad, and a suite just for the kids. The cook in the family will appreciate the kitchen's many built-in conveniences such as the adjustable shelf pantry, sink covers that expand the counter space, and a hutch for the coffee maker. After dinner, stretch out on the jiffy sofa that conceals a huge storage area underneath, adding function to comfort.



MODEL ST322VBH



Top: The bunk room features a large sofa that easily converts into a comfortable double bed with extra storage underneath. An overhead bunk folds ups out of the way during the day.

Bottom: The Comfort by Design sofa provides a higher quality of comfort with the convenience of flipside cushions that let you change the decor at a whim or for added protection when the kids come in from swimming.



You'll enjoy hanging out around the radius entertainment center that houses an available 32" LED internet ready smart TV that can pick up hot spots or free Wi-Fi when available. A standard feature in all Sport Trek models is the Safe "T"ek Box that eliminates the clutter of electronic chargers on the counter top. Solitude in the private master bedroom with a queen size walk-around Sleep Tight bed and plenty of personal storage complete the ST322VBH.



MODEL ST300VTH TOY HAULER



Top: The murphy-type designed bedroom provides comfortable seating during the day.

Bottom: The seating area easily converts into a roomy queen size bed at night in just 6 quick steps.



Our Toy Hauler model includes all the amenities of home along with a large 10-foot garage. The full kitchen leaves nothing out, complete with large size appliances, cabinet storage, double sink, and an oversize U-dinette. You'll find the same consideration in the spacious bathroom as well. The garage area includes an available power bed that lowers for additional sleeping space.



CONSTRUCTION

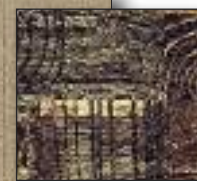
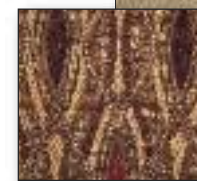


1. Epoxy and E-coated frame with Huck Bolt construction.
2. 5/8" Tongue and groove plywood flooring with residential insulation.
3. Fiberglass exterior with durable and lightweight aluminum framed laminated sidewall construction.
4. 32" LED Smart TV with Push Function (Available).
5. 15" Aluminum rims with 15" radial tires (Available).
6. Under Shield Enclosed Heated Underbelly
7. LED lighted power awning (Available).
8. AL-KO auto adjusting brakes with easy lube axles.
9. Power tongue jack (Available).
10. Flip-up bike/cargo tray (Available).



Mohave

Safari

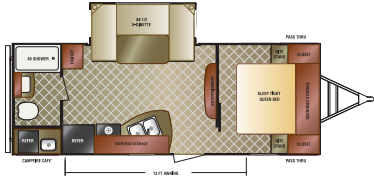


Choose from two interior décor designs: Mohave or Safari.

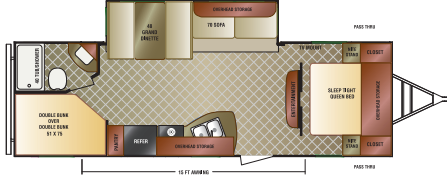
FLOOR PLANS



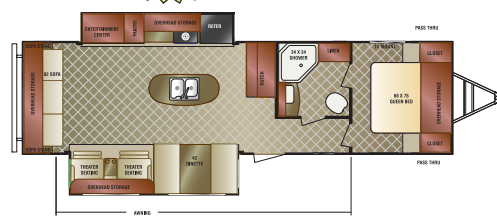
ST235VRB



ST270VBH



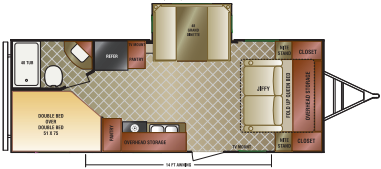
ST290VIK **NEW**



ST310VQB



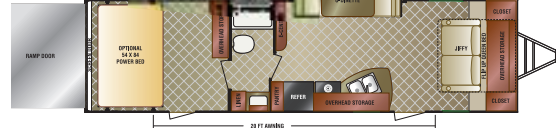
ST240VBH **NEW**



ST270VRL



ST300VTH **NEW Toy Hauler**



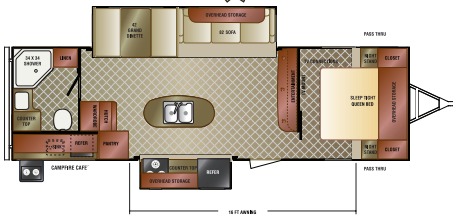
ST320VIK



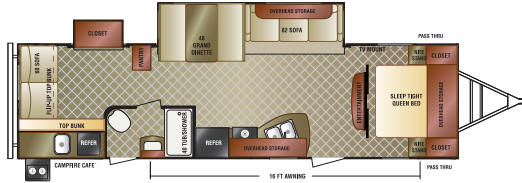
ST250VRK



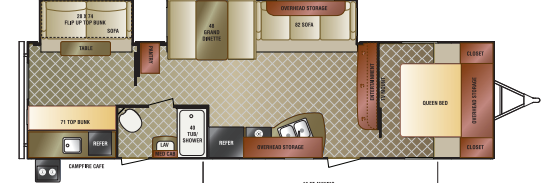
ST280VRB **NEW**



ST310VJS



ST322VBH **NEW**



Specifications: ST235VRB ST240VBH ST250VRK ST270VBH ST270VRL ST280VRB ST290VIK ST300VTH ST310VJS ST310VQB ST320VIK ST322VBH

UWV	4730	4950	5270	5460	5700	6880	7000	6480	7040	6550	7250	7130
Hitch Weight	500	670	500	660	660	650	770	1000	850	850	860	710
Axle Weight	4240	4380	4770	4800	5040	6230	6230	5480	6190	6190	6390	6420
Carrying Capacity	1260	1250	1230	1340	1100	1420	1300	2120	1260	1750	1350	1170
GVWR	6000	6200	6500	6800	6800	8300	8300	8600	8300	8300	8600	8300
Interior Height	6' 6"	6' 6"	6' 6"	6' 6"	6' 6"	6' 6"	6' 6"	6' 6"	6' 6"	6' 6"	6' 6"	6' 6"
Exterior Height	10' 3"	10' 10"	10' 7"	10' 7"	10' 7"	11'	11' 1"	10' 8"	10' 9"	10' 9"	11' 1"	11' 2"
Exterior Width	8'	8'	8'	8'	8'	8'	8'	8'	8'	8'	8'	8'
Exterior Length	26' 5"	28' 2"	28' 9"	30' 8"	30' 3"	32' 2"	35' 0"	34' 4"	34' 11"	34' 11"	35' 6"	35' 10"
Tire Size	14" Radial	14" Radial	14" Radial	14" Radial	14" Radial	15" Radial	15" Radial	15" Radial	15" Radial	15" Radial	15" Radial	15" Radial

Tanks – Fresh water: 40 gallons Gray Water: 32 gallons (64 gallons on ST250VRK) Black Water: 32 gallons

*This weight reflects the rolling average unit weight for each model. Your trailer weight will vary according to optional equipment.

STANDARDS & OPTIONS

Bedroom

- Designer padded headboard
- Sleep Tight innerspring mattress
- Solid wood nightstands
- Overhead cabinets
- Large shirt closet with built-in shelf
- 2 Gas struts under the bed storage
- Solid wood privacy door(s) (N/A 240VBH and 250VRK)
- TV and satellite connections
- Hard valances
- Night shades

Living Room/Kitchen

- Built-in radius entertainment center with halogen lighting (N/A 230VBH)
- Bluetooth DVD/CD/MP3/AM/FM Stereo
- Residential freeze/crack proof linoleum
- Shaw® R2X stain resistant carpet
- Panoramic slide-out windows
- 6' 6" Interior height
- Cognac maple cabinet doors and drawers
- Tilt-out utility tray
- Ledge stone backsplash
- High rise satin nickel faucet
- 60/40 Deep sink with sink covers
- Safe "T"ek box
- Full extension ball bearing drawer guides
- 48" Grand dinette (VBF)
- Jiffy sofa with storage (varies by floor plan)
- (4) Flush mount interior speakers

Appliances

- Microwave with turntable
- 6.3 Cubic foot refrigerator
- 3-Burner stove top with oven
- Vented range hood with light
- Coleman® Whisper A/C
- 6 Gal DSI gas/electric water heater

Bathroom

- Foot flush toilet
- Multi-shelf shower or tub
- Designer shower curtain
- Mirrored medicine cabinet

Exterior/Construction Features

- Diamond plate rock guard
- EZ accesses LP tank cover
- EZ exchange (2) 20# LP tanks with auto changeover
- Large pass-thru baggage doors
- Wide-Trek axles
- AL-KO axles with auto adjust brakes
- Triple step entry step with LED stairwell light
- Heated and enclosed underbelly
- BAL Huck bolted frame that is E-coated and epoxy painted
- Fiberglass exterior with champaign colored front and rear profile
- Deep slides with champaign colored slide-out ends
- Exterior shower
- Tinted Safety Glass Windows
- Hitch Light
- (4) LED Stabilizer Lights
- Digital antenna receiver
- Large assist grab handle
- Cable/satellite connection (2 locations)
- (4) Stabilizer jacks
- 5/8" Tongue and groove plywood floor
- Walkable roof
- (2) Marine grade exterior speakers
- Alpha Superflex roof material
- Gutter with downspouts
- Gutters above slide-outs
- Extra long awnings

Trail Package

- Spare tire, carrier and cover
- Ladder
- Black tank flush

Entertainment Package

- 32" HD LED Smart TV with push function (24" LED TV in 240VBH)
- Swing away bracket

Options

- LED lighted power awning
- LED interior & exterior lighting
- Outside grill
- Power tongue jack
- Fireplace
- Theater seating (NA 235, 240, 250)
- Flip-up cargo tray
- 15" Radial tires with aluminum wheels (4)
- 15,000 BTU A/C
- RVIA/QAI/Canadian standards
- RVIA seal
- State seal

TOY HAULER PACKAGES & OPTIONS

Toy Hauler Package

- Aluminum rims
- Spare tire / carrier
- Ramp extensions and legs
- Security light
- Black tank flush
- Toy lok

Entertainment Package

- 32" HD LED Smart TV with push function
- Swing away bracket

Toy Hauler Options

- Fuel tank with pump station
- Power bed (in garage area)
- 15,000 BTU A/C
- LED lighted power awning
- Swing away generator tray
- Retractable screen door (cargo)
- RVIA Seal
- State Seal
- RVIA/QAI/Canadian Standards
- LED interior lighting
- Power tongue jack



A Division of KZ RV

0985N 900W
Shipshewana, IN 46565

888.988.8440



► www.Venture-RV.com

Your local dealer



Due to continual research and advances, manufacturer reserves the right to change specifications, design, price and equipment without notice, and assumes no responsibility for any error in this literature. Some items shown are not included as standard or optional equipment.