

# HAMPTON

DESTINATION TRAILERS



**CROSSROADS**<sup>®</sup>

RECREATIONAL VEHICLES

# HAMPTON LIVING

A get-away is great, but home is more than a place. Home is peace of mind. That's what Hampton offers when you choose from one of our exclusive Destination Trailers. Luxury and affordability come together here.



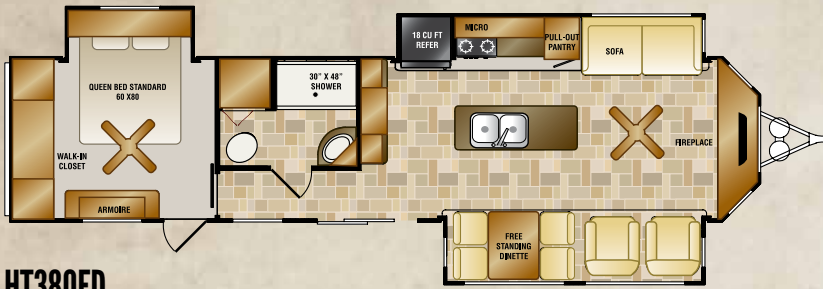
## MORE STANDARD FEATURES

We know peace of mind is valuable. The Hampton was designed with your comfort in mind. We thought of everything from upgrading the insulation for your comfort, to a one-piece molded front cap for extra durability, to enclosing the underbelly to seal the floor. We made your home better.

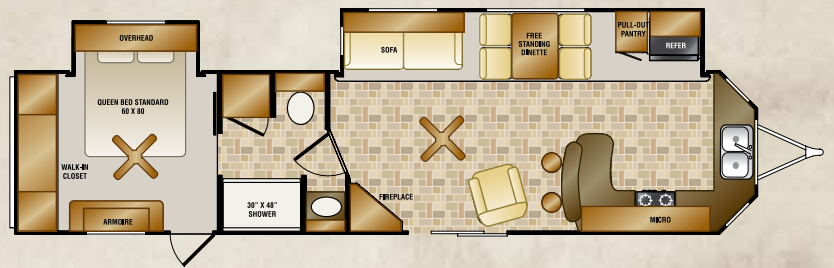


DISCLAIMER: Product information is as accurate as possible at the date of publication of this brochure. All features, floorplans, and specifications in this brochure are subject to change without notice. Please also consult CrossRoads RV's website at [www.crossroadsrv.com](http://www.crossroadsrv.com) for more current product information and specifications. Tow Vehicle Disclaimer. CAUTION: Owners of CrossRoads recreational vehicles are solely responsible for the selection and proper use of tow vehicles. All customers should consult with a motor vehicle manufacturer or their dealer concerning the purchase and use of suitable tow vehicles for CrossRoads RV products. CrossRoads RV disclaims any liability or damages suffered as a result of the selection, operation, use or misuse of tow vehicle. CROSSROADS RV'S LIMITED WARRANTY DOES NOT COVER DAMAGE TO THE RECREATIONAL VEHICLE OR TOW VEHICLE AS A RESULT OF THE SELECTION, OPERATION, USE OR MISUSE OF THE TOW VEHICLE.

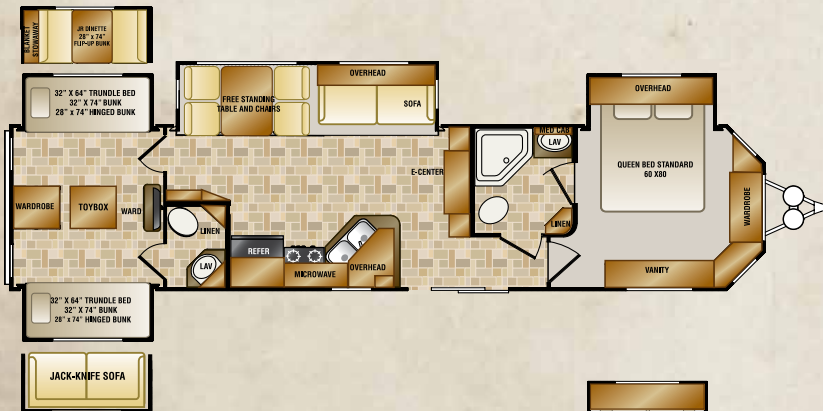
# FLOOR PLANS



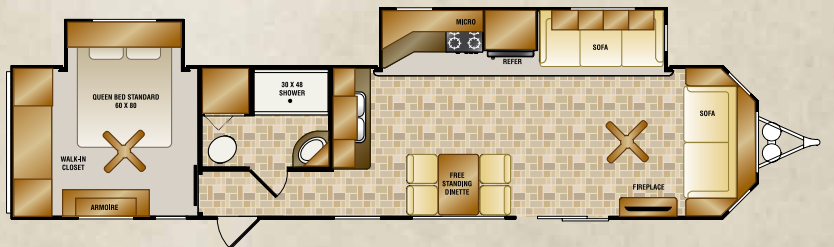
**HT380FD**



**HT380FK**



**HT380QB**



**HT400FL**

HAMPTON	HT380FD	HT380FK	HT380QB	HT400FL
SHIPPING WEIGHT	11602	10608	11672	10750
GVWR	13872	13530	13368	13182
CARRYING CAP	2270	2922	1696	2432
HITCH WEIGHT	1872	1530	1368	1182
AXLE WEIGHT	9730	9078	10304	9568
EXT LENGTH	40' 10"	40' 11"	40' 11"	43' 1"
EXT. HEIGHT W/AC	12' 8"	12' 8"	12' 8"	12' 8"
FRESH WATER	56	56	56	56
BLACK WATER	40	40	80	40
GRAY	80	80	80	80
TIRE SIZE	235/80R16	235/80R16	235/80R16	235/80R16

# STANDARDS & OPTIONS

## STANDARDS

### LIVING ROOM

- Exterior cable with satellite hookup & booster
- 8' from floor to ceiling height
- 7' headroom in slide-outs
- Wood mini blinds
- Two toned wood fascia
- Decorative accent lighting
- Recliner (varies by model)
- AM/FM/CD/DVD player
- Three décor choices
- TV antenna with cable input
- Fireplace
- HD LED TV
- Living room tri-fold Hide-a-bed sofa
- Patio door with swing-out assist rail

### KITCHEN

- Stainless steel appliances: 18 cu ft. fridge with icemaker; 24" range & 22" microwave
- Raised panel cabinet doors
- Deep stainless steel sink
- Faucet with pull-out sprayer
- Residential overhead cabinets with halogen lighting
- Freestanding table & chairs

- Full extension ball bearing drawer guides

### BEDROOM

- Armoire
- TV hook-up
- Deluxe closet
- Coordinated window treatments and bedspread
- Bedroom speakers
- King sized residential mattress
- Living room and bedroom ceiling fan

### BATHROOM

- Large satin-finish lavatory bowl
- 48" one piece fiberglass tub (varies by model)
- Corner shower with one-piece surround (varies by model)
- Porcelain toilet
- Linen storage
- Lighted, mirrored medicine cabinet
- Washer/dryer hook up (varies by model)

### EXTERIOR

- Tinted glass windows

- Patio awning
- Exterior speakers
- Outside shower

### CONSTRUCTION

- 50 Amp service
- One piece radius rubber roof with 12-year manufacturer's warranty
- 3/8" roof decking
- 16" OC truss rafters with 4-1/2" crown
- Fiberglass roof & floor insulation
- Rain gutters along entire roof line
- 15,000 BTU ducted A/C wired & prepped for second A/C in master bedroom
- 40,000 BTU floor ducted furnace
- 5/8" tongue and groove plywood floor decking (glued & screwed)
- 16" tires with white rims
- 60"x 76" Patio door
- 8' Interior floor width
- 3/4" No-wick slide decking
- Electric slides throughout
- Dual LP tank hookup (front and back)

- PolarTec upgrade insulation package R28 roof and floor, R9 sidewalls
- 10/16 gallon D.S.I gas/electric water heater
- Black tank flush
- Enclosed underbelly
- Full fiberglass front cap with recessed lighting
- Swing-out entry assist handle at second door

### OPTIONS

- Spare tire and carrier
- 13.5 A/C for bedroom
- Rear ladder
- Solid surface counter tops
- (6) 30" Stabilizer jacks



## MADE IN THE USA >>>

PROUD TO BE MADE IN THE UNITED STATES OF AMERICA! ALL CROSSROADS PRODUCTS, INCLUDING HAMPTON MODELS, ARE HAND-CRAFTED BY A SEASONED MIDWEST WORKFORCE DEDICATED TO QUALITY AND INTEGRITY. THE BEST ONLY GETS BETTER WHEN YOU CONSIDER THE METICULOUS ATTENTION TO DETAIL, QUALITY OF COMPONENTS AND VALUE AN AMERICAN MADE PRODUCT BRINGS. YOU CAN CHECK OUT OUR FULL LINE OF PRODUCTS BY VISITING [CROSSROADSRV.COM](http://CROSSROADSRV.COM) TODAY.

MORE >>> Go see more details on construction, features & benefits at: [crossroadsrv.com](http://crossroadsrv.com)

**CROSSROADS**<sup>®</sup>  
RECREATIONAL VEHICLES

YOUR LOCAL CROSSROADS DEALER:

1140 W. LAKE STREET 🌿 TOPEKA, IN 46571 🌿 PH 260 593-3850 🌿 FX 260 593-2088