

# CRUISER

CROSSROADS

Engineered for easy towing and comfort. The "Evolved" 5-sided framing allows for increased insulation for a more comfortable camping experience. Inside, it's all about livability with features not seen in this price point.



## STANDARDS

### EXTERIOR

- Hard-Shell laminated sidewalls
- 5-Sided Aluma frame construction
- Aerodynamic front cap (Caramel color) with LED accent lights
- Partially painted front cap
- One-piece seamless rubber roof covering
- Radius roof line
- Total Truss room system
- 30"x72" main entry door
- Lighted triple entry step
- Extendable grab handle at main entry
- EZ lube axles
- Trail air equa-flex suspension enhancement with adjustability
- 16" nitrogen filled radial tires
- Galvanized wheel well
- Outside kitchen (VBM)
- Super-Stor pass through basement storage
- Slam latch pass through baggage doors
- Cable TV and outlet in basement
- Manual slide override extends through frame for easy access
- Dura-Cam I beam frame
- Scare light
- Convenience outlet at front awning arm
- Exterior marine grade speakers (2)
- Dual battery capacity
- Battery disconnect
- Heated and enclosed gate valves
- ABS Enclosed underbelly
- Forced heat to underbelly

- Black tank flush
- Quick recovery 10gal G/E DSI water heater (19.7 gal/hr)
- Outside shower
- Exterior utility center
- 50amp detachable power service
- 2nd AC prep
- Cable/SAT prep
- Digital TV antenna
- Electric rear jacks
- Outside grill prep
- Sure-Seal windows
- Roof ladder

### INTERIOR

- Lumber core screwed stile cabinetry construction
- Raised panel cabinetry in living / kitchen area
- 70-lb steel ball bearing guides, full extension
- Solid wood drawer construction
- Hardwood mullion style fridge front
- Extendable free standing table and chairs
- Dinette ensemble with recliner (VBM)
- Self igniting 22" oven with 3-burner cook top
- Range cover
- Oak knife rack
- Adjustable pantry shelving
- Pull out kitchen faucet
- Stainless steel kitchen sink
- Maximum lino
- Tri-Fold hide a bed sofa with pillows
- Rocker recliner chairs (VBM)
- Deluxe theater seating (VBM)
- Ceiling fan with light
- Fireplace
- Slideout sidewall light (VBM)

- Decorative chair rail in living / kitchen area slide (VBM)
- OHC above sofa / chairs in slideout
- Decorative wood slide fascias
- Water heater by-pass kit
- EZ winterization kit
- Backlit command center for switches
- 65amp converter with distribution center
- Interior stairwell handrail (VBM)
- Bath skylight
- Built medicine cabinet
- Glass tub/shower enclosure (VBM)
- Pleated night shades in bedroom
- Deluxe bedding package
- Full trunk under bed storage
- Plywood bed base with strut assist
- Spacious bedroom closets
- Sliding mullion style wardrobe doors (VBM)
- Washer/dryer prep with vented closet doors (VBM)
- Fire extinguisher
- LP/CO2 detector
- Smoke detector

## OPTIONS

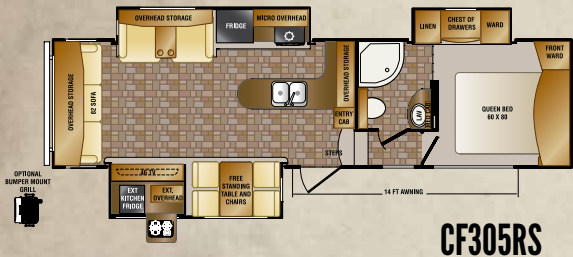
- Rear hitch receiver
- Bumper mount grill
- Insulated windows
- 2nd power awning with LED lights (VBM)
- Rear cap (Caramel color)
- White high gloss sidewall (N/A with paint opt)

- Painted exterior (requires rear cap and includes Sahara high gloss)
- 2nd AC (lo-profile 13.5)
- Carpet in living area
- 32" TV with bracket in bedroom
- Slide awning package

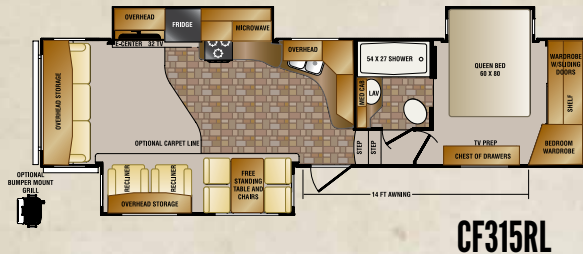
## SELECT PACKAGE (MANDATORY)

- 8cu ft refer
- 12v Multi-media sound system w/bluetooth
- Cruiser Black Label furniture
- Dark tinted safety glass windows
- Dual 30# lp tanks w/auto changeover
- Porcelain toilet with foot flush
- 32" - 46" LED TV in living area (VBM)
- Microwave
- 35,000 btu furnace
- 15K ducted air system with quick cool
- Spare tire
- Skylight in kitchen
- Solid surface kitchen countertops
- Pleated day/night shades in living area
- Polartec insulation package
- Aluminum rims
- Sahara high gloss sidewalls
- Electric awning with LED light
- Intelli-jacks leveling system
- EZ key fob remote
- Roto-flex pin box
- Maxx Air power vent with rain sensor (kitchen and bath)
- Cruiser Black Label memory foam mattress (60"x80")

# CROSSROADS CRUISER FLOOR PLANS



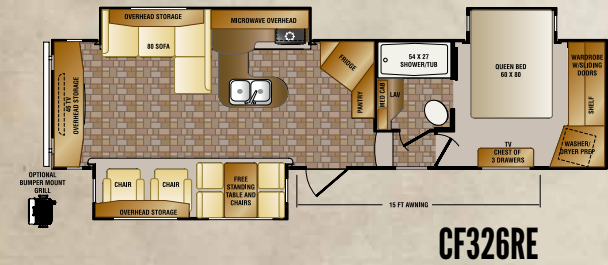
**CF305RS**



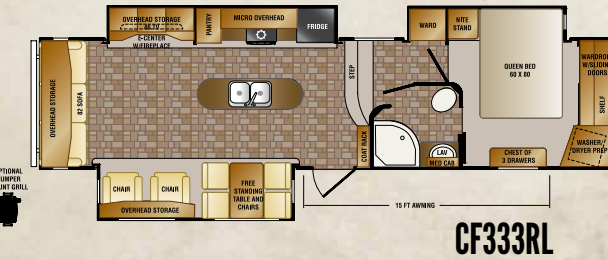
**CF315RL**



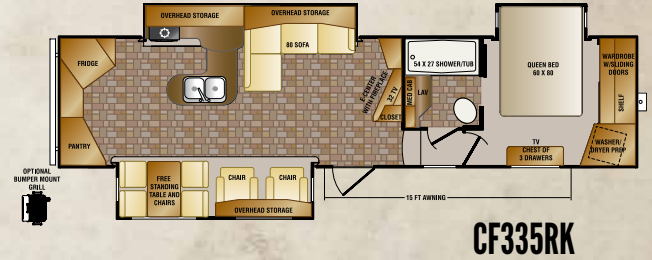
**CF322RL**



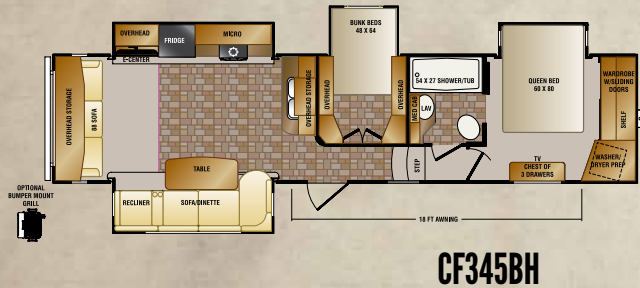
**CF326RE**



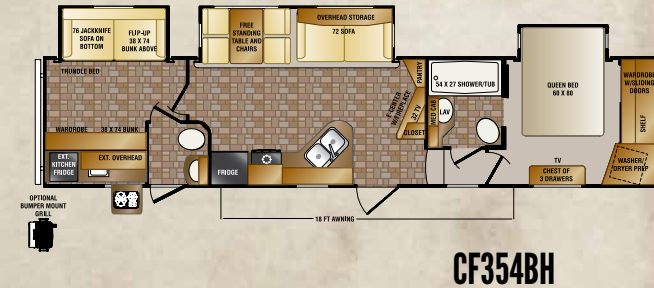
**CF333RL**



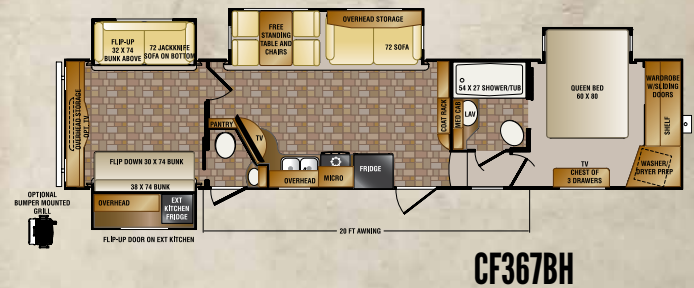
**CF335RK**



**CF345BH**



**CF354BH**



**CF367BH**

FOR THE LATEST SPECIFICATIONS SEE WEBSITE

Go see more details on construction, features & benefits at: [crossroadsrv.com/cruiser](http://crossroadsrv.com/cruiser)

1140 W. LAKE STREET TOPEKA, IN 46571 PH 260 593-3850 FX 260 593-2088

