

# EXCURSION® 2014

CLASS A DIESEL | **FLEETWOOD RV**



Bronzed Onyx



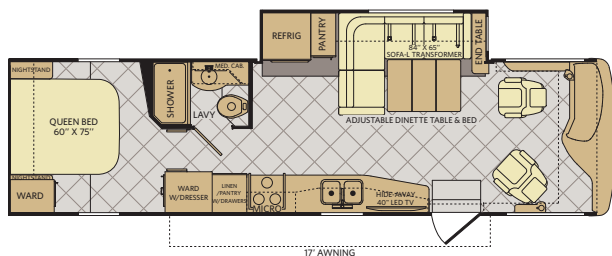
Platinum Sandstone

## TOP FEATURES

Tinted Pearl

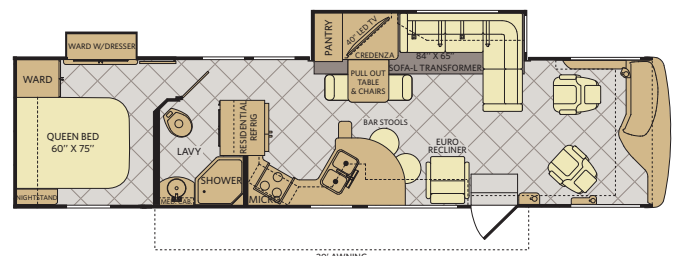
- 300HP Cummins® ISB 6.7L w/Exhaust Brake
- 2100MH Allison® Transmission
- 22.5" Aluminum Wheels
- Automatic 4-Point Hydraulic Leveling System
- 90-Gallon Fuel Tank
- Impressive Pass-Through Storage
- 84" Interior Height
- Sony® 40" HDTV Blu-ray® Ready
- LED TVs
- Vinyl Tile Flooring Throughout
- Hardwood Cabinetry
- Reversible Designer Comforter
- Washer/Dryer Combo (Optional)
- Residential Refrigerator (Optional for 33A/33D)
- Hide-A-Loft Overhead Bed (Optional)
- Exclusive Dream Easy Mattress

33A



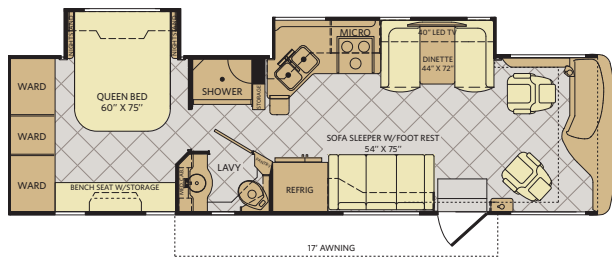
Available options: 084, 126, 144, 146, 186, 217, 853

35B



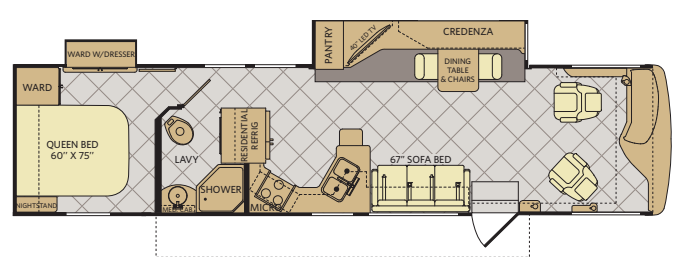
Available options: 084, 126, 186, 217, 853

33D



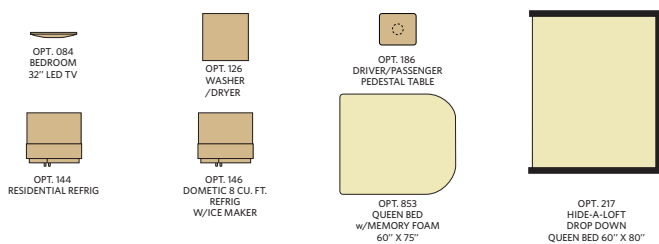
Available options: 084, 126, 144, 146, 186, 217, 853

35C



Available options: 084, 126, 186, 217, 853

## OPTIONS



# WEIGHTS & MEASUREMENTS

| CHASSIS<br>MODELS                  | POWER BRIDGE® |        |        |        |
|------------------------------------|---------------|--------|--------|--------|
|                                    | 33A           | 33D    | 35B    | 35C    |
| Wheelbase (inches)                 | 208"          | 208"   | 242"   | 242"   |
| GVWR (lbs) <sup>1</sup>            | 26,000        | 26,000 | 26,000 | 26,000 |
| Front GAWR (lbs) <sup>2</sup>      | 10,500        | 10,500 | 10,500 | 10,500 |
| Rear GAWR (lbs) <sup>2</sup>       | 17,500        | 17,500 | 17,500 | 17,500 |
| GCWR (lbs) <sup>3</sup>            | 30,000        | 30,000 | 30,000 | 30,000 |
| Hitch Rating (lbs) <sup>5,††</sup> | 10,000        | 10,000 | 10,000 | 10,000 |
| Fuel Capacity (gal)                | 90            | 90     | 90     | 90     |

## POWER BRIDGE® CHASSIS

**Model:** Freightliner® XCS Series  
**Engine:** Cummins® ISB 6.7L w/Exhaust Brake  
**Transmission:** Allison® 2100 MH 6-Speed w/Electronic Shifter

**Alternator:** Delco Remy 160 Amp  
**Torque:** 660 lb-ft @ 1,600 RPM  
**Horsepower:** 300HP

## DIMENSIONS & CAPACITIES

| MODELS   | 33A     | 33D     | 35B     | 35C     |
|--|---------|---------|---------|---------|
| Overall Length <sup>4</sup>                    | 33' 11" | 33' 11" | 36' 9"  | 36' 9"  |
| Overall Height (suspension inflated)           | 11' 10" | 11' 10" | 11' 10" | 11' 10" |
| Overall Height (suspension deflated)           | 11' 7"  | 11' 7"  | 11' 7"  | 11' 7"  |
| Overall Width (maximum) <sup>5,6</sup>         | 102"    | 102"    | 102"    | 102"    |
| Interior Height (maximum)                      | 84"     | 84"     | 84"     | 84"     |
| Interior Width (maximum)                       | 96"     | 96"     | 96"     | 96"     |
| Interior Storage (cu. ft.)                     | 166     | 140     | 170     | 170     |
| Exterior Storage (cu. ft.)                     | 140     | 133     | 161     | 161     |
| Fresh Water Holding Tank (gal)                 | 88      | 88      | 88      | 88      |
| Grey Water Holding Tank (gal)                  | 60      | 60      | 60      | 60      |
| Black Water Holding Tank (gal)                 | 32      | 32      | 32      | 32      |
| Appliance Propane Tank (gal) (WC) <sup>7</sup> | 28.2    | 28.2    | 28.2    | 28.2    |
| Water Heater Tank (gal)                        | 6       | 6       | 6       | 6       |



Visit [FleetwoodRV.com](http://FleetwoodRV.com) or find Fleetwood RV Tablet apps in the App Store or Google Play.



### Addendums

- GVWR (Gross Vehicle Weight Rating) is the maximum permissible weight of this fully loaded motorhome. The GVWR is equal to or greater than the sum of the (UVW) unloaded vehicle weight plus the (OCCC) occupant cargo-carrying capacity\*.
- GAWR (Gross Axle Weight Rating) is the maximum permissible loaded weight a specific axle is designed to carry.
- GCWR (Gross Combined Weight Rating) is the value specified by the motorhome manufacturer as the maximum allowable loaded weight of this motorhome with its towed vehicle. Towing and braking capacities may be different. Refer to Fleetwood and chassis manufacturer's manuals for complete information.
- Length measured from front bumper to rear bumper (excludes accessories).
- Excludes safety equipment and awnings.
- Motorhomes feature a body width over 96" which will restrict your access to certain roads. Before purchasing, you should research any state and/or province road laws which may affect your usage.
- Tank manufacturer's listed water capacity (WC). Actual propane capacity is 80% of water listing as required by the safety code.

† The chassis manufacturer recommends the installation of a supplemental brake control system to activate the brakes on the vehicle or trailer you are towing. Hitch receiver ratings expressed are maximum for the hitch receiver installed and may require the purchase of additional equipment that is dependent on the weight of the towed load. Consult with hitch receiver manufacturer for further information.

\* UVW and OCCC are found on the label containing the federal certification tag in each RV.

†† The Minimum Towable Load of this vehicle is the available weight capacity, up to GCWR, when the coach is fully loaded to maximum GVWR. However, if the coach is loaded to something less than maximum GVWR, that extra available weight capacity can be added to your Towable Load. For example, if your coach is loaded to 1000lbs less than maximum GVWR, your Towable Load increases accordingly. Do not exceed the hitch rating weight, GVWR or GCWR.

### IMPORTANT—PLEASE READ

Product information, photography and illustrations included in this publication were as accurate as possible at the time of printing. For further product information and changes, please visit our website at [www.fleetwoodrv.com](http://www.fleetwoodrv.com) or contact your local Fleetwood RV dealer. Prices, materials, design and specifications are subject to change without notice. All weights, fuel, liquid capacities and dimensions are approximate. Fleetwood RV has designed its recreational vehicles to provide a variety of uses for customers. Each vehicle features optimal seating, sleeping, storage and fluid capacities. The user is responsible for selecting the proper combination of loads (i.e., occupants, equipment, fluids, cargo, etc.) to ensure that the vehicle's capacities are not exceeded.

### CONTACT US

To locate a dealer near you, visit our website at [www.fleetwoodrv.com](http://www.fleetwoodrv.com) or call 1-800-322-8216. We can also be contacted at Fleetwood RV Customer Relations, P.O. Box 1007, Decatur, IN 46733.

**FLEETWOOD RV**

\*\* All 2014 Fleetwood RV motorhomes include a 1-year emergency roadside assistance membership. For complete info, see your Fleetwood RV dealer.

©2013 Fleetwood RV Inc. Printed in USA.  
 Inventory Control Number EXC14F1, 06/13. Model Year 2014, First Edition.

**ASV**  
 ALLIED SPECIALTY VEHICLES