

JAMBOREE SPORT/JAMBOREE SEARCHER 2014

JAMBOREE SPORT®

JAMBOREE SEARCHER®



FLEETWOOD RV

JAMBOREE SPORT 2014



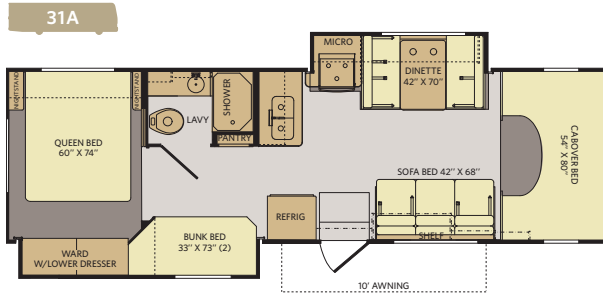
Standard



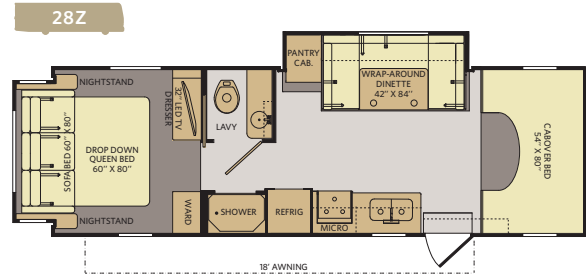
Bay Island Frost



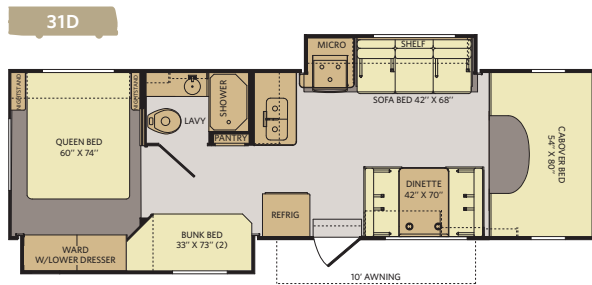
Tangled Chocolate



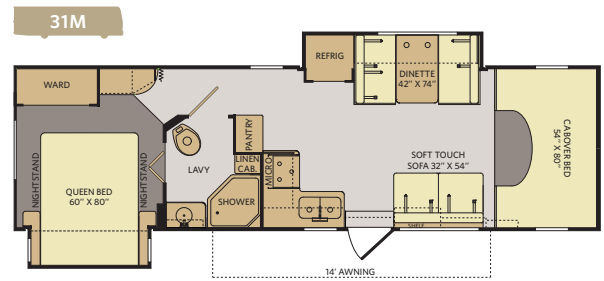
Available options: 079, 084, 097, 157, 167, 351, 860/864



Available options: 079, 167, 351



Available options: 079, 084, 097, 157, 167, 351, 860/864



Available options: 079, 084, 167, 351

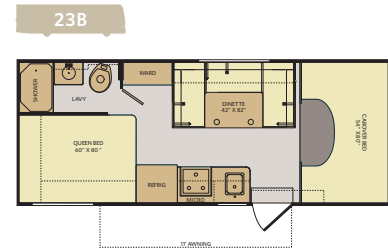
JAMBOREE SEARCHER 2014



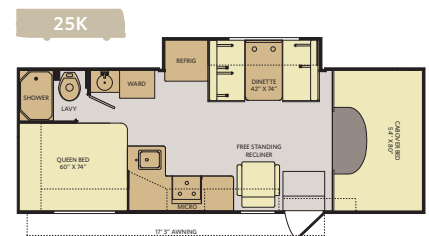
Standard

TOP FEATURES

- Hardwood Cabinet Doors
- LED TVs
- High-Gloss Fiberglass Exterior
- One-Piece Molded Fiberglass Front End Cap
- Full Basement Exterior
- Pass-Through Storage
- PEX Plumbing System
- Exclusive Dream Easy Mattress



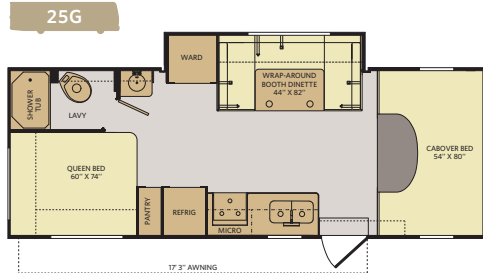
Available options: 078



Available options: 078, 113, 160

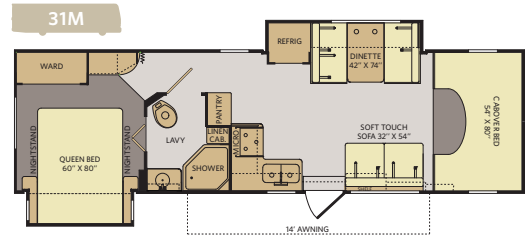
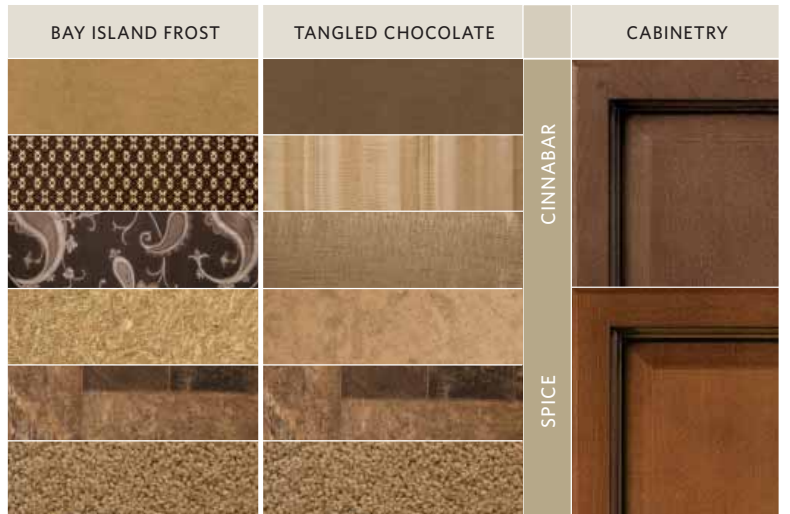
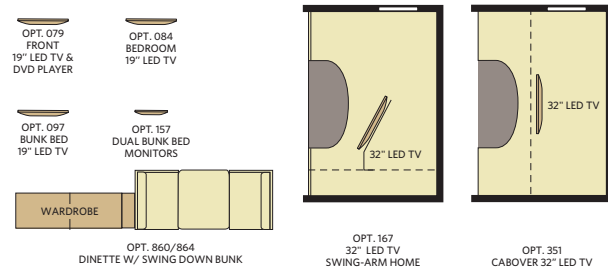
TOP FEATURES

- Hardwood Cabinet Doors w/Hidden Hinges
- LED TVs
- Bunk Bed & Breakfast Feature (Select Models)
- One-Piece Molded Front Cap
- High-Gloss Exterior Fiberglass
- Full Basement Storage
- Flexsteel® Furniture
- Radius Roof w/Ducted A/C (Select Models)
- PEX Plumbing System
- Full-Body Paint (Optional)
- Exclusive Dream Easy Mattress



Available options: 079, 084, 167, 351

OPTIONS



Available options: 078, 113, 160

OPTIONS



JAMBOREE SPORT 2014

CHASSIS MODELS	FORD®				
	25G	28Z	31A	31D	31M
Engine Displacement (liters)	6.8	6.8	6.8	6.8	6.8
Wheelbase (inches)	176"	198"	214"	214"	218"
GVWR (lbs) ¹	14,500	14,500	14,500	14,500	14,500
Front GAWR (lbs) ²	5,000	5,000	5,000	5,000	5,000
Rear GAWR (lbs) ²	9,500	9,500	9,500	9,500	9,500
GCWR (lbs) ³	19,500	19,500	19,500	19,500	19,500
Hitch Rating Weight (lbs) ^{†,††}	5,000	5,000	5,000	5,000	5,000
Tongue Weight (lbs) [†]	500	500	350	350	350
Fuel Capacity (gal)	55	55	55	55	55

FORD® E450 CHASSIS

Model: Ford® E450
Engine: 6.8L Triton V10
Transmission: 5-Speed Automatic w/Overdrive

Alternator: 120 Amp
Torque: 420 lb-ft @ 3,250 RPM
Horsepower: 305HP

DIMENSIONS & CAPACITIES

MODELS	25G	28Z	31A	31D	31M
Overall Length ⁴	26' 2.5"	29' 2.5"	31' 8.5"	31' 8.5"	32' 5.5"
Overall Height (with A/C)	11' 6"	11' 6"	11' 6"	11' 6"	11' 6"
Overall Width (maximum) ^{5,6}	102"	102"	102"	102"	102"
Interior Height (maximum)	82"	82"	82"	82"	82"
Interior Width (maximum)	96"	96"	96"	96"	96"
Interior Storage (cu. ft.)	102	126	110	110	119
Exterior Storage (cu. ft.)	100	102	104	104	104
Fresh Water Holding Tank (gal)	50	50	60	60	60
Grey Water Holding Tank (gal)	37	37	35	35	35
Black Water Holding Tank (gal)	36	37	35	35	35
Appliance Propane Tank (gal) (WC) ⁷	14	14	14	14	14
Water Heater Tank (gal) ⁶	6	6	6	6	6



Visit FleetwoodRV.com or find Fleetwood RV Tablet apps in the App Store or Google Play.

Addendums

- GVWR (Gross Vehicle Weight Rating) is the maximum permissible weight of this fully loaded motorhome. The GVWR is equal to or greater than the sum of the (UVW) unloaded vehicle weight plus the (OCCC) occupant cargo-carrying capacity*.
 - GAWR (Gross Axle Weight Rating) is the maximum permissible loaded weight a specific axle is designed to carry.
 - GCWR (Gross Combined Weight Rating) is the value specified by the motorhome manufacturer as the maximum allowable loaded weight of this motorhome with its towed vehicle. Towing and braking capacities may be different. Refer to Fleetwood and chassis manufacturer's manuals for complete information.
 - Length measured from front bumper to rear bumper (excludes accessories).
 - Excludes safety equipment and awnings.
 - Motorhomes feature a body width over 96" which will restrict your access to certain roads. Before purchasing, you should research any state and/or province road laws which may affect your usage.
 - Tank manufacturer's listed water capacity (WC). Actual propane capacity is 80% of water listing as required by the safety code.
- † The chassis manufacturer recommends the installation of a supplemental brake control system to activate the brakes on the vehicle or trailer you are towing. Hitch receiver ratings expressed are maximum for the hitch receiver installed and may require the purchase of additional equipment that is dependent on the weight of the towed load. Consult with hitch receiver manufacturer for further information.

JAMBOREE SEARCHER 2014

CHASSIS MODELS	FORD® E350	E350/E450	E450
	23B	25K	31M
Engine Displacement (liters)	5.4	5.4/6.8	6.8
Wheelbase (inches)	158"	176"	218"
GVWR (lbs) ¹	12,500	12,500/14,500	14,500
Front GAWR (lbs) ²	5,000	5,000	5,000
Rear GAWR (lbs) ²	8,500	8,500/9,500	9,500
GCWR (lbs) ³	17,500	17,500/19,500	19,500
Hitch Rating Weight (lbs) ^{†,††}	5,000	5,000	5,000
Tongue Weight (lbs) [†]	500	500	350
Fuel Capacity (gal)	40	40/55	55

FORD® E350 CHASSIS

Model: Ford® E350 (23B/25K)
Engine: 5.4L Triton V8
Transmission: 5-Speed Automatic w/Overdrive

Alternator: 120 Amp
Torque: 350 lb-ft @ 3,250 RPM
Horsepower: 255HP

FORD® E450 CHASSIS

Model: Ford® E450 (25K/31M)
Engine: 6.8L Triton V10
Transmission: 5-Speed Automatic w/Overdrive

Alternator: 120 Amp
Torque: 420 lb-ft @ 3,250 RPM
Horsepower: 305HP

DIMENSIONS & CAPACITIES

MODELS	23B	25K	31M
Overall Length ⁴	24' 4.5"	26' 2.5"	32' 5.5"
Overall Height (with A/C)	11' 6"	11' 6"	11' 6"
Overall Width (maximum) ^{5,6}	102"	102"	102"
Interior Height (maximum)	82"	82"	82"
Interior Width (maximum)	96"	96"	96"
Interior Storage (cu. ft.)	74	79	119
Exterior Storage (cu. ft.)	27	88	104
Fresh Water Holding Tank (gal)	50	50	60
Grey Water Holding Tank (gal)	36	37	35
Black Water Holding Tank (gal)	36	36	35
Appliance Propane Tank (gal) (WC) ⁷	14	14	14
Water Heater Tank (gal)	6	6	6

* UVW and OCCC are found on the label containing the federal certification tag in each RV.

†† The Minimum Towable Load of this vehicle is the available weight capacity, up to GCWR, when the coach is fully loaded to maximum GVWR. However, if the coach is loaded to something less than maximum GVWR, that extra available weight capacity can be added to your Towable Load. For example, if your coach is loaded to 1000lbs less than maximum GVWR, your Towable Load increases accordingly. Do not exceed the hitch rating weight, GVWR or GCWR.

IMPORTANT—PLEASE READ

Product information, photography and illustrations included in this publication were as accurate as possible at the time of printing. For further product information and changes, please visit our website at www.fleetwoodrv.com or contact your local Fleetwood RV dealer. Prices, materials, design and specifications are subject to change without notice. All weights, fuel, liquid capacities and dimensions are approximate. Fleetwood RV has designed its recreational vehicles to provide a variety of uses for customers. Each vehicle features optimal seating, sleeping, storage and fluid capacities. The user is responsible for selecting the proper combination of loads (i.e., occupants, equipment, fluids, cargo, etc.) to ensure that the vehicle's capacities are not exceeded.

CONTACT US

To locate a dealer near you, visit our website at www.fleetwoodrv.com or call 1-800-322-8216. We can also be contacted at Fleetwood RV Customer Relations, P.O. Box 1007, Decatur, IN 46733.



** All 2014 Fleetwood RV motorhomes include a 1-year emergency roadside assistance membership. For complete info, see your Fleetwood RV dealer.

©2013 Fleetwood RV Inc. Printed in USA.
 Inventory Control Number JASP_JAS14F1, 06/13. Model Year 2014, First Edition.

