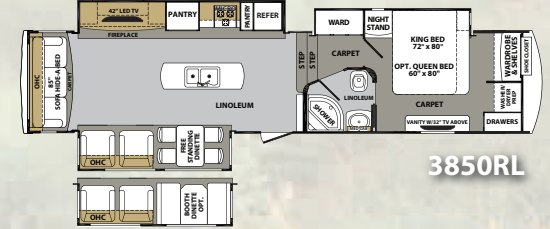
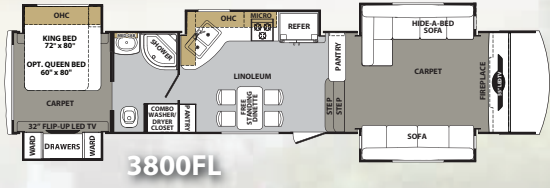
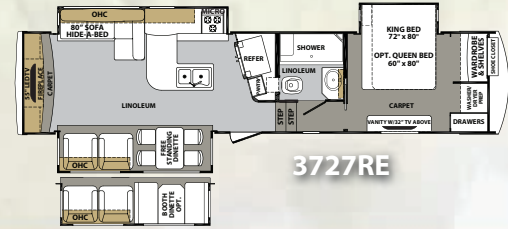
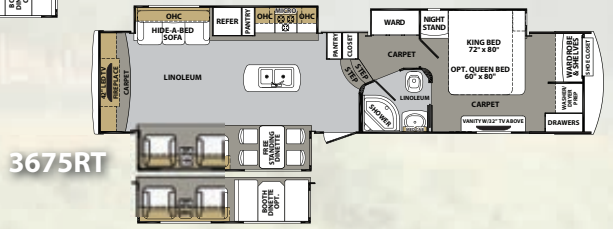
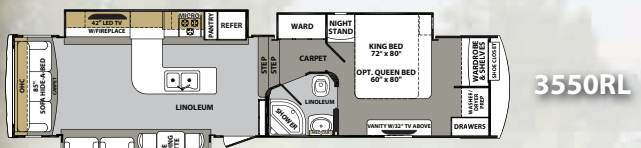
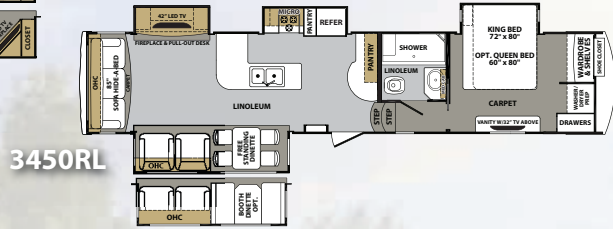
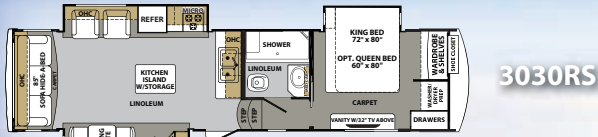


Cardinal

FIFTH WHEELS BY FOREST RIVER



For ease of movement and safety, all Cardinal main floor slide rooms are flush floor designs. Choose from a wide selection of configurations planned to fit your lifestyle.

SPECIFICATIONS

A Berkshire Hathaway company.



MODEL	3030RS	3450RL	3550RL	3675RT	3727RE	3800FL	3850RL
Overall Length	35' 5"	40' 4"	37' 7"	38' 4"	37' 2"	40' 11"	39' 7"
UVW	11374	13234	13514	12584	10110	13639	12324
Hitch Weight	2550	2270	2380	2400	2536	2110	2575
GAWR	12000	13680	13680	13680	13680	13680	13680
GVWR	14550	15950	16060	16080	16216	15790	16255
Cargo Carrying Capacity	3176	2716	2546	3496	6106	2151	3931
Exterior Height	13' 0"	13' 0"	13' 0"	13' 0"	13' 0"	13' 0"	13' 0"
Exterior Width	98"	98"	98"	98"	98"	98"	98"
Interior Height (Bedroom)	81"	81"	81"	81"	81"	105"	81"

MODEL	3030RS	3450RL	3550RL	3675RT	3727RE	3800FL	3850RL
Interior Height (Living area)	105"	105"	105"	105"	105"	81"	105"
Tire Size	235/80R16E	235/80R16E	235/80R16E	235/80R16E	235/80R16E	235/80R16E	235/80R16E
Brake Size	12"	12"	12"	12"	12"	12"	12"
Fresh Water	77 gal.	77 gal.	77 gal.	77 gal.	77 gal.	77 gal.	77 gal.
Waste Water	120 gal.	120 gal.	120 gal.	120 gal.	120 gal.	120 gal.	120 gal.
Water Heater	12 gal.	12 gal.	12 gal.	12 gal.	12 gal.	12 gal.	12 gal.
Furnace	42000 BTU	42000 BTU	42000 BTU	42000 BTU	42000 BTU	42000 BTU	42000 BTU
Patio Awning	17'	19'	17'	17'	17'	17'	19'
Exterior Storage (Cu. ft.)	102	127	102	127	127	102	127

STANDARD FEATURES

INTERIOR

- Cherry hardwood raised panel glazed cabinet doors & drawers
- Cherry hardwood cabinet frames (Stiles)
- Crown molding cabinet accents
- Crown molding ceiling perimeter
- Hidden hinge adjustable cabinet hardware
- Solid wood (Baltic birch) drawer boxes
- Ball bearing, full extension drawer glides
- Congoleum "Designer Care" flooring (3 year cold crack warranty)
- Tri-color nylon twist residential carpet
- Satin nickel cabinet hardware & accents
- Satin nickel plumbing fixtures
- Solid cherry glazed slide room fascia frame
- Decorative solid wood frame entry door
- Solid wood exit assist handle

GALLEY

- LG Hymacs Sienna solid surface polished counter tops w/undermount sink
- Dual bowl "GIANT" stainless steel kitchen sink
- High rise single handle pull down kitchen faucet
- Wine rack (3030RS, 3450RL, 3550RL)
- Solid cherry glazed raised panel refrigerator fronts
- Fantastic fan w/rain sensor

INTERIOR LIGHTING

- LED lighting throughout
- Semi flush decorative ceiling light above dinette
- Ceiling fan w/light kit
- Lamp (End table) (3450RL, 3550RL & 3675RT)
- Mini pendant lights in galley (2)
- Dimmer switch

FURNITURE & WINDOW COVERINGS

- Three section rear sofa w/flip-down drink holders
- Tri-fold sleeper sofa
- Bonded leather swivel recliners (2) w/lifetime frame warranty
- Free standing dinette table w/dual leaves
- 4 Dinette chairs w/flip-up storage
- Coat Closet
- Day/Night pleated shades
- Designer hard valance window treatments (Where available)

BATHROOM

- Fantastic power roof vent
- Vanity-Solid surface polished counter top w/integrated bowl
- Porcelain toilet w/foot flush
- Fiberglass molded 1 piece shower w/seat

- "Mega" 30" x 60" fiberglass molded shower (3030RS, 3450RL)
- Shower skylight/dome
- Glass shower door
- Adjustable shower head
- Medicine cabinet w/mirrored door
- Towel bar
- Dedicated heat & AC duct

BEDROOM

- King bed
- Premium, innerspring mattress
- Cherry head board w/padded inserts
- Designer bedspread, pillows & sham
- Full-height hanging wardrobe
- Stackable washer/dryer (N/A 3800 FL)
- W/D-Dual electrical circuits (Operates W/D at same time)
- Shoe caddy
- Cubby storage
- Chest of drawers
- Cedar lined closet and drawers
- Underbed storage
- Solid Cherry glazed slide fascia frame
- 2 Reading lights w/individual controls
- 2 Bedside power outlets

APPLIANCES

- Dometic 8 cu. ft. double door refrigerator
- Residential refrigerator (3800FL only)
- 3 Burner, high output range w/22" oven & range cover
- Convection microwave
- Central vacuum system w/powered dust pan
- 42K BTU LP furnace
- Wire & frame for 2nd AC
- 15K Ducted Quiet Cool AC system
- 12 Gal gas/electric DSI water heater
- "Shurflo" On-demand high output water pump (3g/min at 55 PSI)
- Dual 30lb LP bottles w/auto switchover
- LP leak detector
- Carbon monoxide detector

ELECTRONICS

- 5 Function remote control w/key fob
- Key fob operates slides, awning, patio light, front jacks & rear jacks
- 42" LG LED w/heavy duty steel swing arm (Main living area)
- 32" LCD HD TV (Bedroom)
- Furrion Theater System w/bluetooth, HDMI, DVD, AM/FM, weather band
- Digital TV antenna w/signal booster
- Cable TV hook-ups (Main living & bedroom)
- Cable TV hook-up (Exterior garage bulkhead)
- Satellite prep (Roof mount at road side front mushroom cap)
- National recognized electronic brands (LG, Toshiba & Furrion)
- Exterior flip-down speakers

EXTERIOR

- High-gloss (Premium quality & thickness) gel coat exterior
- Front Cap: Molded high gloss gel coat fiberglass
- Front Cap Design: Engineered w/extended turning radius (Chamfered front)
- Rear Cap: Molded high gloss gel coat fiberglass
- Laminated front bulkhead w/high gloss get coat fiberglass
- 45° Angled skirts
- Slam latch 1.5 in. thick baggage doors w/high gloss gel coat fiberglass (All compartments)
- Slide End Walls: Laminated w/high gloss gel coat fiberglass
- 30" x 76" Entry & screen door w/high gloss gel coat fiberglass
- Automotive frameless windows
- Hydraulic slide room power
- Individual slide room selector switches
- Roof ladder
- Dual aluminum wrapped electric awnings w/LED light strip
- Entry assist handle (XL-Folding)
- Forced air heated tanks
- 1.5" Belt rail w/caps (No exposed screws)
- Roto-cast spun seamless water/waste tanks
- Enclosed, heated underbelly (Forced air heat)
- Thermostatically controlled tank heating pads (Electric) (Dual heating sources)
- Dual roof vents
- LED tail lights & rear running lights

SLIDE ROOM SEAL & GASKET SYSTEM

- Dual neoprene squeegee seals
- Exterior & interior "D" seals
- Exterior "H" seal

EXTERIOR LIGHTING

- LED docking lights (2-Mounted into front cap)
 - Rear Cap Lighting: White reverse & red running/braking lights
 - Security lights (2)
 - Amber patio light
 - Entry door auto threshold light
- ### UTILITY DOCKING COMPARTMENT
- Light (12 volt)
 - 110 Outlet (2)
 - Soap dispenser
 - Outside shower (Hot & cold)
 - Black tank flush system
 - Fresh water heater bypass valve



Learn More
Scan this barcode using
a QR Reader on your
smart phone to learn
more about Forest River.



- Full coach water filtration system
 - Winterizing bypass system
 - Protected/insulated pull waste valves
 - Waste hose storage tube
 - Slam latch 1.5" luggage door
- ### CHASSIS/FOUNDATION
- I-beam "Z" frame power coated chassis
 - Chamfered frame technology
 - 12" I-beams frames/10" (3030RS)
 - Dual Axles (7K w/12" beams) or (6K w/10" beams)
 - Easy Lube axles
 - Mor/ryde suspension
 - 8 Lug Hubs
 - Aluminum rims 16"
 - Goodyear Tires (E-rated)
 - Spare tire (Inside storage mounted)
 - Hydraulic front jacks
 - 8" Radius front jack pads
 - Electric rear stabilizing jacks
 - Quad steel entry steps (N/A 3030 RS)
 - Pinless front jack legs
 - Flush floor slide design w/steel ramp & glide bar (Main room slides)
 - Hydraulic slide system w/2" steel rams
 - Hydraulic pump station w/manual override
 - Mor/ryde pin box
 - 18K extended hitch pin

CONSTRUCTION

- Sidewalls: Aluminum welded frame & laminated 2" walls
- Roof: 4.5" Double radius aluminum trusses on 16' centers
- Front Wall: Aluminum welded frame
- Rear Wall: Aluminum welded frame
- 3" One-piece seamless laminated floor
- Bath/Bed Deck: Aluminum welded frame
- Slide End Walls: Aluminum welded frame, laminated
- Slide Roof: Aluminum welded frame, laminated
- Slide Floor: 1" plywood

INSULATION

- Sidewalls: Block foam (R9)
- Roof: 2 layers of R7 batt (Fiberglass)(R24) and radiant foil insulation (R38)
- Main Floor: 2 layers of R7 batt fiberglass insulation, combined with radiant foil insulation (R38)

- Sub Floor: 1/4" honey combed plastic w/aluminum radiant foil insulation & direct forced air heat
- Front Wall: Fiberglass insulation and radiant foil insulation (R38)
- End Wall: R14 batt (Fiberglass) insulation and radiant foil insulation (R38)

ELECTRICAL SYSTEMS

- Centralized command center & monitor panel
- 70 Amp Converter
- 50 Amp Service
- Marine grade detachable 50 AMP power cord
- 12 Volt battery disconnect
- "Easy Diagnose" LED fuse indicator
- Battery prep box

OPTIONS

INTERIOR

- Serta deluxe king sized pillow top mattress (Donald Trump Edition)
- Queen bed (IPO king bed)
- Extra dinette chair
- Theater seats
- Day/night roller shades
- Stainless steel appliance package (Includes convection microwave)
- 4 Door Refrigerator (N/A 3030RS)
- Wood plank linoleum flooring
- Washer/dryer
- Fantastic fan w/rain sensor – Bedroom (N/A w/second AC)

EXTERIOR

- Full-body paint package
- Custom partial paint package
- 3, 4 or 5 Slide out awnings
- Low profile 13,500 BTU ducted AC in bedroom
- Heat pump for 15,000 BTU AC
- Dual pane frameless windows w/safety glass
- Generator prep
- 5.5 LP Generator (Includes prep)
- "Level Up" one touch automatic 6-point hydraulic leveling system
- Outside ice maker
- Bike hitch
- "Trail Air" air bag pin box
- Exterior entertainment center w/32" LED TV, DVD, iPod control)
- G-rated Goodyear tires

Cardinal
FIFTH WHEELS BY FOREST RIVER

Cardinal Division

58277 State Road 19 South • Elkhart, IN 46517 • (574) 296-7700
www.forestriverinc.com/cardinal • www.forestriveraccessories.com