

EAGLE



well-equipped for **FAMILY FUN**



Read more about our industry-leading **2-YEAR WARRANTY** on the back cover!



Jayco[®]

Generations of family fun.



a retreat for the **WHOLE FAMILY**

Call your next getaway a retreat. The 2014 Eagle travel trailer lineup boasts multiple slideouts, spacious living rooms and residential-style kitchens. Plus, with five bunkroom floorplans to choose from, the rest of the family will call it a retreat, too.



SLEEP MORE FAMILY, MORE COMFORTABLY

Thanks to a Jayco-exclusive pillowtop Denver Mattress hide-a-bed sofa, Eagle can sleep up to 12 comfortably.





EAGLE TRAVEL TRAILER | PEWTER

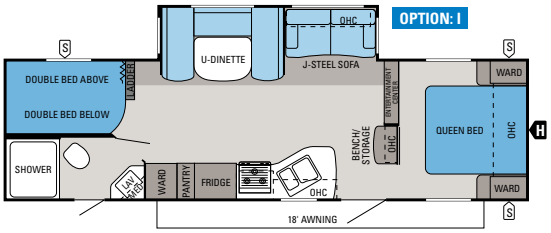


EAGLE TRAVEL TRAILER | PEWTER

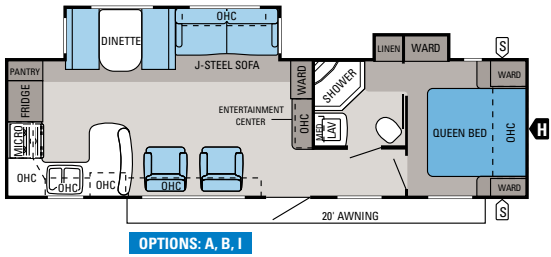


EAGLE TRAVEL TRAILER | BROWNSTONE

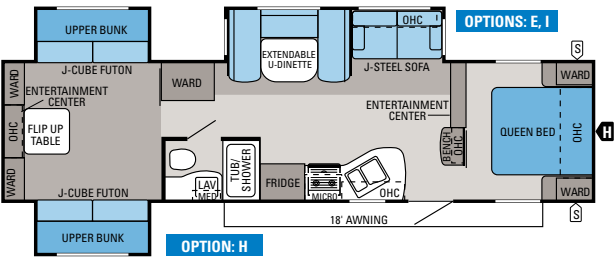
EAGLE TRAVEL TRAILER FLOORPLANS



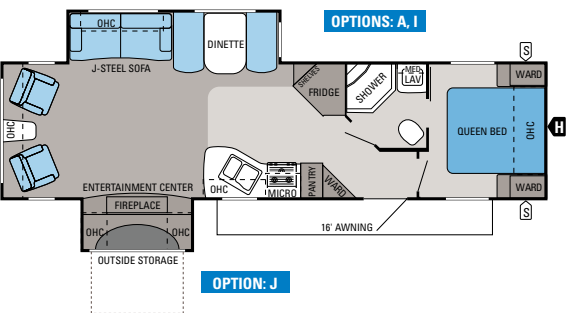
EAGLE TRAVEL TRAILER | 284BHBE
Ext. Length: 33' 9" Ext. Height: 138" Unloaded Wt. (lbs.): 6,390 Sleeps: 8-10



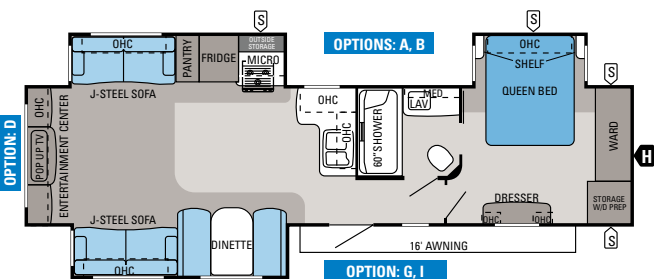
EAGLE TRAVEL TRAILER | 306RKDS
Ext. Length: TBD Ext. Height: TBD Unloaded Wt. (lbs.): TBD Sleeps: 3-6



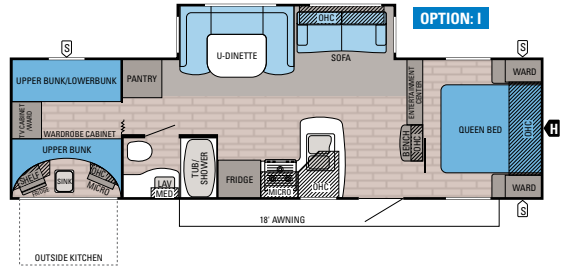
EAGLE TRAVEL TRAILER | 314TSBH
Ext. Length: 37' 7" Ext. Height: 138" Unloaded Wt. (lbs.): 7,970 Sleeps: 9-12



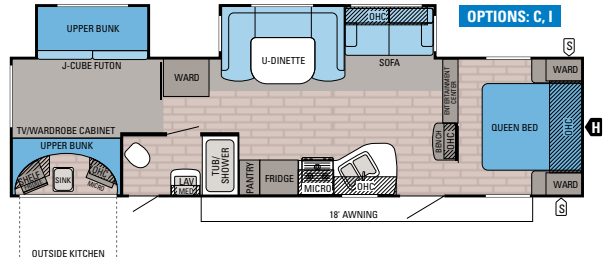
EAGLE TRAVEL TRAILER | 321RLDS
Ext. Length: 35' 8" Ext. Height: 137" Unloaded Wt. (lbs.): 7,560 Sleeps: 3-6



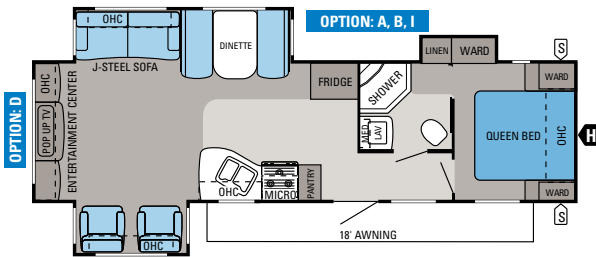
EAGLE TRAVEL TRAILER | 338RETS
Ext. Length: 39' Ext. Height: 138" Unloaded Wt. (lbs.): 8,590 Sleeps: 3-8



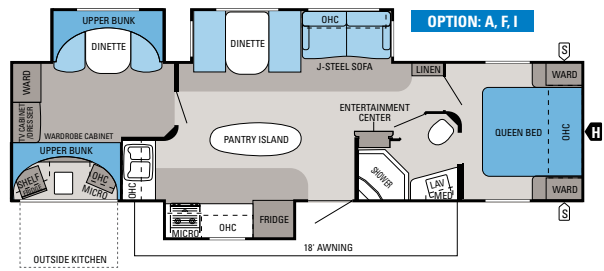
EAGLE TRAVEL TRAILER | 294QBOK
Ext. Length: TBD Ext. Height: TBD Unloaded Wt. (lbs.): TBD Sleeps: 6-9



EAGLE TRAVEL TRAILER | 314BHDS
Ext. Length: 37' Ext. Height: 137" Unloaded Wt. (lbs.): 7,580 Sleeps: 8-10



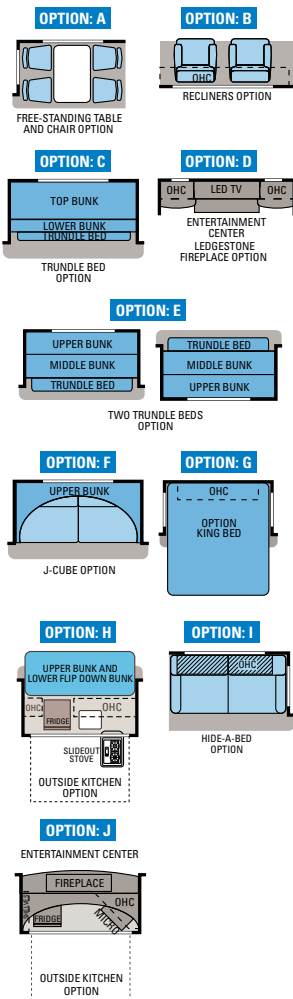
EAGLE TRAVEL TRAILER | 318RETS
Ext. Length: 35' Ext. Height: 137" Unloaded Wt. (lbs.): 7,385 Sleeps: 3-6



EAGLE TRAVEL TRAILER | 324BHTS
Ext. Length: 36' 11" Ext. Height: 138" Unloaded Wt. (lbs.): 8,210 Sleeps: 6-10

- STORAGE
- TRAILER HITCH
- LAV BATHROOM SINK
- MICRO MICROWAVE
- OHC OVERHEAD CABINETS
- FRIDGE REFRIGERATOR
- WARD WARDROBE

FLOORPLAN OPTIONS



STANDARDS AND OPTIONS

STANDARD EXTERIOR EQUIPMENT

Deluxe Graphics Package with Russet Brown
 Glazed accent cap and skirting
 High-gloss, Ivory fiberglass shell
 TuffShell vacuum-bonded laminated sidewalls, slideout walls and rear wall
 Fully enclosed and heated underbelly
 Oversized fresh water system/holding tanks
 Magnum Truss Roof System
 I-Class cambered structural I-beam frame
 Climate Shield package (see package details)
 Radial tires
 Aluminum rims
 E-Z Lube axles
 Nev-R-Adjust brakes
 MOR/ryde CRE 3000 suspension system
 Completely enclosed and protected slide mechanisms
 30" x 72" main entrance door
 Extendable main entrance grab handle
 Oversized entry step with safety light
 Exterior marine-grade speakers (2)
 G20 dark-tinted, frameless, safety-glass windows
 Large pass-through basement storage with slam latches and light
 Electric patio awning with LED lights
 Outside kitchen (294QBOK, 314BHDS and 324BHTS)
 Dual battery capacity
 30-amp power service
 Black tank flush
 Cable/satellite prep
 Digital TV antenna
 Under-mounted spare tire
 Frame fully prepped for bike rack/cargo tray

Steel ball bearing drawer guides, 75-lb. capacity, full extension
 Large, split kitchen sink with (2) cutting board covers and pull-out style kitchen faucet
 18 gal./hr. quick recovery gas/electric DSI water heater (6 gal.)
 8 cu. ft. refrigerator
 Command Center for switches, includes 12V cell phone charger
 Arched 84" ceiling with decorative transitions
 Closeable and directional air conditioner vents
 Mirrored/lighted dinette ceiling feature
 Pleated night shades
 Glass shower enclosure
 Porcelain bath stool with foot flush
 Pillowtop Denver Mattress with quilted bedspread
 300-lb. bunk bed capacity (600-lb. 284BHBE)

CUSTOMER VALUE PACKAGE (MANDATORY)

Outside shower
 13,500-BTU air conditioner with Chillgrille feature
 Cap-integrated 30-lb. propane bottles with auto regulator
 Microwave
 Oven
 Water heater bypass
 Bathroom fan
 Bath skylight
 Tile-look tub/shower surround

OPTIONS

Thermal-paned, tinted, safety-glass windows
 Electric tongue jack
 Electric stabilizer jacks
 Outside kitchen (314TSBH and 321RLDS)
 Bumper-mounted grill

Bike rack/cargo tray
 15,000-BTU air conditioner
 2nd air conditioner in bedroom (13,500-BTU)
 50-amp service with 2nd air conditioner prep (standard 338RETS, 321RLDS)
 Roof ladder
 Solid-surface kitchen countertops with undermounted sink and covers
 Free-standing table and chairs (select models)
 Linoleum in living area (306RKDS, 318RETS, 321RLDS, 338RETS)
 LedgeStone fireplace with 40" HDTV (318RETS, 338RETS)
 Recliners in lieu of swivel chairs (306RKDS, 318RETS, 321RLDS)
 Recliners in lieu of door-side sofa (338RETS)
 Hide-a-bed sofa with tri-fold Denver Mattress
 King-sized bed (338RETS)
 Trundle bed in lieu of J-Cube (314BHDS, 314TSBH)
 J-Cube futon with folding bunk (324BHTS)

PREMIER PACKAGE

Gel-coated sidewalls
 Key fob remote for slideouts, awnings, patio lights and jacks
 Raised-panel cabinet doors throughout
 Large bath power vent

TECH PACKAGE

Multi-media premium sound system with AM/FM/CD/DVD player and MP3 input jack (n/a on 338RETS or 318RETS with LedgeStone fireplace option; forced option on 321RLDS)
 32" HDTV (26" HDTV in 324BHTS)

STANDARD INTERIOR EQUIPMENT

Oversized pots and pans drawer at dinette (n/a U-dinette models)

SPECIFICATIONS

FLOORPLAN	EXT. LENGTH	EXT. WIDTH	EXT. HEIGHT (WITH A/C)	INT. HEIGHT	UNLOADED VEHICLE WEIGHT (LBS.)	DRY HITCH WEIGHT (LBS.)	GROSS VEHICLE WEIGHT RATING (LBS.)	CARGO CARRYING CAPACITY (LBS.)	FRESH WATER CAPACITY (WITH WATER HEATER)	GRAY WASTEWATER CAPACITY (GAL.)	TOILET/BLACK WASTEWATER CAPACITY (GAL.)
284BHBE	33' 9"	96"	138"	84"	6,390	680	9,250	2,860	82	32.5	32.5
294QBOK	TBD	96"	TBD	84"	TBD	TBD	TBD	TBD	TBD	TBD	TBD
306RKDS	TBD	96"	TBD	84"	TBD	TBD	TBD	TBD	TBD	TBD	TBD
314BHDS	37'	96"	137"	84"	7,580	870	9,975	2,395	82	40.5	32.5
314TSBH	37' 7"	96"	138"	84"	7,970	906	10,750	2,780	82	40.5	32.5
318RETS	35'	96"	137"	84"	7,385	902	9,975	2,590	82	32.5	32.5
321RLDS	35' 8"	96"	137"	84"	7,560	1,060	10,250	2,690	86	32.5	32.5
324BHTS	36' 11"	96"	138"	84"	8,210	905	10,950	2,740	86	65	32.5
338RETS	39'	96"	138"	84"	8,590	1,140	10,950	2,360	84	65	32.5

The weights of certain options and/or option packages are not included in the UVW listed in the specification charts.

Unloaded Vehicle Weight (UVW): Sometimes referred to as "Dry Weight," UVW means the typical weight of this trailer as built at the factory. The UVW, as used in product literature and other promotional materials, does not include cargo, fresh water, propane, options or dealer-installed accessories.

Gross Vehicle Weight Rating (GVWR): GVWR means the maximum permissible weight of the trailer, including the UVW plus passengers, personal items, all cargo, fluids, options, and dealer-installed accessories. The GVWR is equal to or greater than the sum of the UVW and the CCC.

Cargo Carrying Capacity (CCC): CCC means the maximum weight of all passengers, personal items, food, fresh water, propane, tools, other cargo and dealer-installed accessories that can be carried by the trailer. CCC is equal to or less than GVWR minus UVW. The addition of options will decrease the CCC.

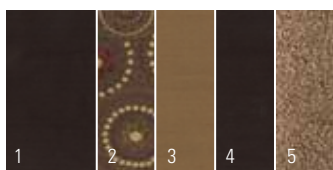
Hitch Weight (HW): The hitch weight, as used in product literature and other promotional materials, does not include cargo, fresh water, propane gas, options or dealer-installed accessories. The addition of these types of items will either add to or subtract from the stated hitch weight.

It is important for your safety and enjoyment that your tow vehicle be adequately sized and equipped to tow and handle the GVWR of the RV you select. Review weights and rating of your tow vehicle and consult a competent advisor for questions or advice. Whether you are new to RVing or a veteran, get a feel for the performance of your tow vehicle before heading out on the roadways. When you tow an RV, you must drive differently than when you drive a single vehicle. Practice hooking up, driving, backing up and braking in a safe environment or seek out professional instruction. Jayco affixes a weight label to each RV which lists weight information for that vehicle. See specifications chart above.

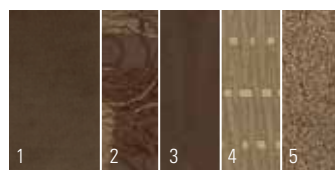
INTERIOR DÉCOR CHOICES

1 Sofa 2 Accent 3 Chair 4 Bedspread 5 Carpet

CHESTNUT



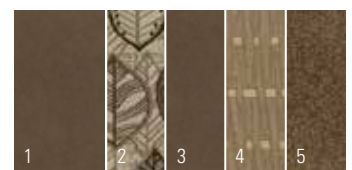
BROWNSTONE



PEWTER



ALMOND



CEILING FEATURES



EAGLE TOURING EDITION FIFTH WHEEL

EAGLE FIFTH WHEEL

tour in comfort, **TRAVEL IN STYLE**

Whether you're stepping up from a travel trailer or looking for the ultimate fifth wheel upgrade, the 2014 Eagle fifth wheel lineup delivers everything you need — from Jayco's all-new Touring Edition to eight comfort-packed fifth wheel floorplans.



EAGLE FIFTH WHEEL 33.5RETS | CHESTNUT



EAGLE FIFTH WHEEL 33.5RETS | CHESTNUT



PULL-OUT FAUCET

EAGLE FIFTH WHEEL 33.5RKTS | BROWNSTONE

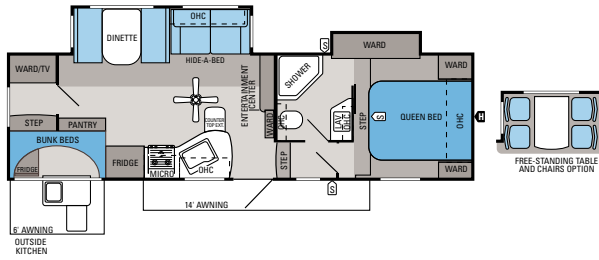


EAGLE TOURING EDITION FIFTH WHEEL 31.5BHTS | PEWTER

KEY FOB
REMOTE

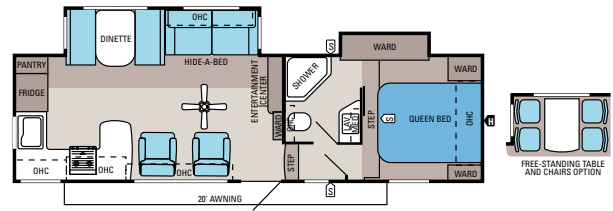


EAGLE TOURING EDITION FIFTH WHEEL FLOORPLANS



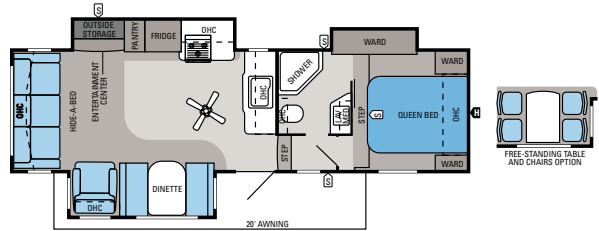
EAGLE TOURING EDITION | 28.5BHDS

Ext. Length: 31' 7" Ext. Height: 145" Unloaded Wt. (lbs.): 8,225 Sleeps: 6-8



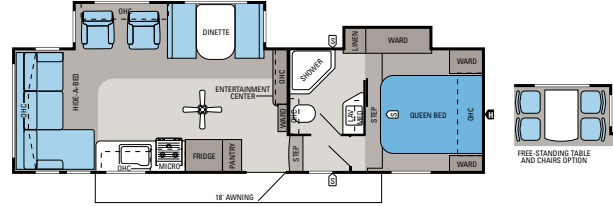
EAGLE TOURING EDITION | 28.5RKDS

Ext. Length: 32' 3" Ext. Height: 145" Unloaded Wt. (lbs.): 8,390 Sleeps: 4-6



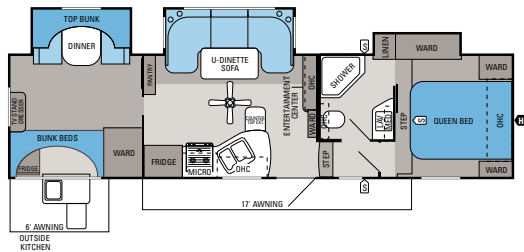
EAGLE TOURING EDITION | 28.5RLTS

Ext. Length: 31' 11" Ext. Height: 144" Unloaded Wt. (lbs.): 8,310 Sleeps: 4-6



EAGLE TOURING EDITION | 29.5RLDS

Ext. Length: 32' 10" Ext. Height: 143" Unloaded Wt. (lbs.): 8,015 Sleeps: 4-6



EAGLE TOURING EDITION | 31.5BHTS

Ext. Length: 35' 1" Ext. Height: 146" Unloaded Wt. (lbs.): 9,280 Sleeps: 6-7

- S STORAGE
- H TRAILER HITCH
- LAV BATHROOM SINK
- MICRO** MICROWAVE
- OHC** OVERHEAD CABINETS
- FRIDGE** REFRIGERATOR
- WARD** WARDROBE

EAGLE TOURING EDITION SPECIFICATIONS

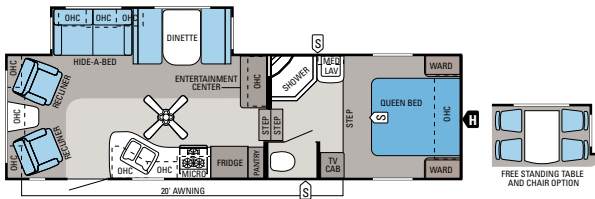
FLOORPLAN	EXT. LENGTH	EXT. WIDTH	EXT. HEIGHT (WITH A/C)	EXT. HEIGHT (WITH OPT. BEDROOM A/C)	INT. HEIGHT (BEDROOM)	UNLOADED VEHICLE WEIGHT (LBS.)	DRY HITCH WEIGHT (LBS.)	GROSS VEHICLE WEIGHT RATING (LBS.)	CARGO CARRYING CAPACITY (LBS.)	FRESH WATER CAPACITY (GAL) (WITH WATER HEATER)	GRAY WASTEWATER CAPACITY (GAL)	TOILET/BLACK WASTEWATER CAPACITY (GAL)
28.5BHDS	31' 7"	96"	145"	146"	73"	8,225	1,622	9,950	1,725	73	62	31
28.5RKDS	32' 3"	96"	145"	146"	73"	8,390	1,725	10,500	2,110	73	62	31
28.5RLTS	31' 11"	96"	144"	146"	73"	8,310	1,760	10,500	2,190	73	29	29
29.5RLDS	32' 10"	96"	143"	146"	73"	8,015	1,730	9,950	1,935	73	62	31
31.5BHTS	35' 1"	96"	146"	146"	72"	9,280	1,749	11,250	1,970	73	60	29

EAGLE FIFTH WHEEL SPECIFICATIONS

FLOORPLAN	EXT. LENGTH	EXT. WIDTH	EXT. HEIGHT (WITH A/C)	EXT. HEIGHT (WITH OPT. BEDROOM A/C)	INT. HEIGHT (BEDROOM)	UNLOADED VEHICLE WEIGHT (LBS.)	DRY HITCH WEIGHT (LBS.)	GROSS VEHICLE WEIGHT RATING (LBS.)	CARGO CARRYING CAPACITY (LBS.)	FRESH WATER CAPACITY (GAL) (WITH WATER HEATER)	GRAY WASTEWATER CAPACITY (GAL)	TOILET/BLACK WASTEWATER CAPACITY (GAL.)
28.5RLS	31' 5"	96"	153"	n/a	78"	7,815	1,600	10,200	2,385	96	65	32.5
30.5BHLS	35' 2"	96"	155"	158"	73"	9,155	1,765	11,700	2,545	96	65	32.5
30.5RLS	33' 11"	96"	156"	158"	72"	8,345	1,825	11,200	2,855	86	65	32.5
31.5FBHS	34' 8"	96"	156"	158"	69"	8,700	1,655	11,200	2,500	85	65	32.5
31.5RLTS	34' 6"	96"	155"	158"	73"	9,235	2,075	11,900	2,665	86	65	32.5
33.5RETS	36' 7"	96"	155"	158"	77"	9,830	1,935	11,995	2,165	85	65	32.5
33.5RKTS	36' 8"	96"	155"	158"	77"	9,865	2,030	12,250	2,385	85	65	32.5
34.5BHTS	38' 3"	96"	156"	158"	73"	10,233	1,825	12,995	2,762	85	73	65

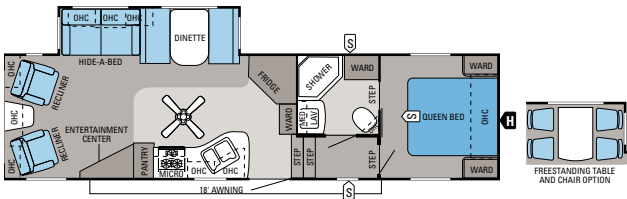
The weights of certain options and/or option packages are not included in the UWW listed in the specification charts.

EAGLE FIFTH WHEEL FLOORPLANS



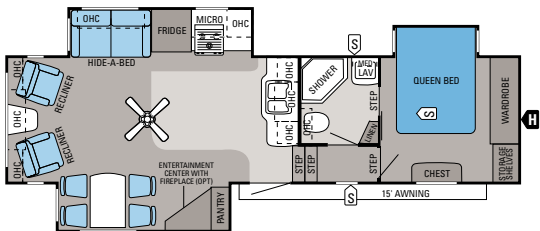
EAGLE FIFTH WHEEL | 28.5RLS

Ext. Length: 31' 5" Ext. Height: 153" Unloaded Wt. (lbs.): 7,815 Sleeps: 6



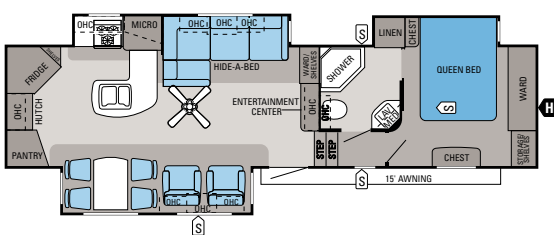
EAGLE FIFTH WHEEL | 30.5RLS

Ext. Length: 33' 11" Ext. Height: 156" Unloaded Wt. (lbs.): 8,345 Sleeps: 6



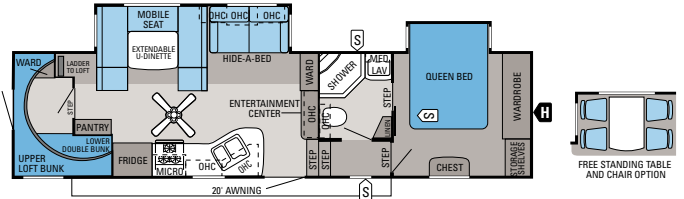
EAGLE FIFTH WHEEL | 30.5FBHS

Ext. Length: 34' 8" Ext. Height: 156" Unloaded Wt. (lbs.): 8,700 Sleeps: 10



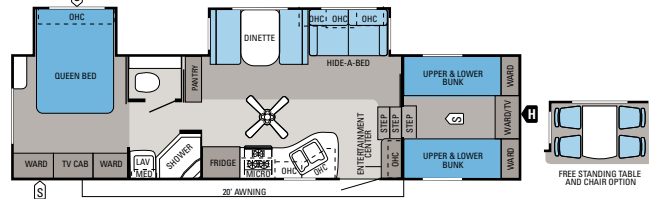
EAGLE FIFTH WHEEL | 31.5RSLTS

Ext. Length: 34' 6" Ext. Height: 155" Unloaded Wt. (lbs.): 9,235 Sleeps: 4



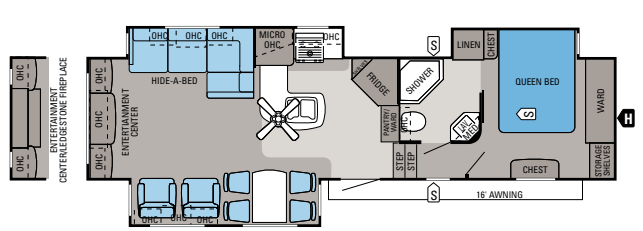
EAGLE FIFTH WHEEL | 31.5FBHS

Ext. Length: 35' 2" Ext. Height: 155" Unloaded Wt. (lbs.): 9,155 Sleeps: 9



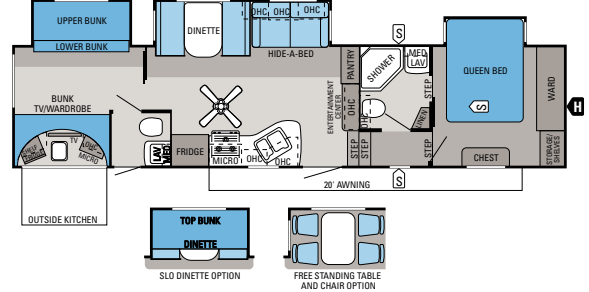
EAGLE FIFTH WHEEL | 33.5RETS

Ext. Length: 36' 7" Ext. Height: 155" Unloaded Wt. (lbs.): 9,830 Sleeps: 3-4



EAGLE FIFTH WHEEL | 33.5RKT

Ext. Length: 36' 8" Ext. Height: 155" Unloaded Wt. (lbs.): 9,865 Sleeps: 3-4



EAGLE FIFTH WHEEL | 34.5BHTS

Ext. Length: 38' 3" Ext. Height: 156" Unloaded Wt. (lbs.): 10,233 Sleeps: 6-9

Unloaded Vehicle Weight (UVW): Sometimes referred to as "Dry Weight," UVW means the typical weight of this trailer as built at the factory. The UVW, as used in product literature and other promotional materials, does not include cargo, fresh water, propane, options or dealer-installed accessories.

Gross Vehicle Weight Rating (GVWR): GVWR means the maximum permissible weight of the trailer, including the UVW plus passengers, personal items, all cargo, fluids, options, and dealer-installed accessories. The GVWR is equal to or greater than the sum of the UVW and the CCC.

Cargo Carrying Capacity (CCC): CCC means the maximum weight of all passengers, personal items, food, fresh water, propane, tools, other cargo and dealer-installed accessories that can be carried by the trailer. CCC is equal to or less than GVWR minus UVW. The addition of options will decrease the CCC.

Hitch Weight (HW): The hitch weight, as used in product literature and other promotional materials, does not include cargo, fresh water, propane gas, options or dealer-installed accessories. The addition of these types of items will either add to or subtract from the stated hitch weight.

It is important for your safety and enjoyment that your tow vehicle be adequately sized and equipped to tow and handle the GVWR of the RV you select. Review weights and rating of your tow vehicle and consult a competent advisor for questions or advice. Whether you are new to RVing or a veteran, get a feel for the performance of your tow vehicle before heading out on the roadways. When you tow an RV, you must drive differently than when you drive a single vehicle. Practice hooking up, driving, backing up and braking in a safe environment or seek out professional instruction. Jayco affixes a weight label to each RV which lists weight information for that vehicle. See specifications chart (left).

EAGLE TOURING EDITION

STANDARD EXTERIOR EQUIPMENT

Deluxe Graphics Package with Russet Brown Glazed accent cap and skirting
High-gloss, gel-coated fiberglass sidewalls
TuffShell vacuum-bonded laminated sidewalls, slideout walls and rear wall
Fully enclosed and heated underbelly
Magnum Truss Roof System
I-Class cambered structural I-beam frame
Climate Shield ultimate weather protection
E-Z Lube axles
Nev-R-Adjust brakes
MOR/ryde CRE 3000 suspension system
30" x 72" main entrance door
G20 dark-tinted, safety-glass windows
Drop-frame, pass-thru storage
Cable TV and outlet in basement
Electric patio awning with LED lights
Exterior marine-grade speakers (2)
Outside kitchen (28.5BHDS and 31.5BHDS)
Dual 30-lb. propane gas bottles with auto regulator
Enclosed and heated Uni-Dock utility center
Black tank flush
Oversized fresh water system and holding tanks
50-amp service
Cable/satellite prep
Bedroom air conditioner prep
Electric, wide-stance rear stabilizer jacks
Bumper-mounted spare tire

STANDARD INTERIOR EQUIPMENT

Raised-panel cabinetry with lumbercore, screwed construction
Steel ball bearing drawer guides, 75-lb. capacity, full extension
21 gal./hr. quick recovery gas/electric DSI water heater (10 gal.)
8 cu. ft. refrigerator
Oversized 21" oven
Command Center for switches includes 12V cell phone charger
Multi-media premium sound system with AM/FM/CD/DVD and MP3 input jack
32" HDTV
Key fob remote for slideouts, awning, patio light and jacks
Ceiling fan
Closeable and directional air conditioner vents
Hide-a-bed sofa with tri-fold Denver Mattress
Porcelain bath stool with foot flush
60" x 80" pillowtop Denver Mattress with quilted bedspread
300-lb. bunk bed capacity

CUSTOMER VALUE PACKAGE (MANDATORY)

Outside shower
13,500-BTU air conditioner with Chillgrille feature
Outside speakers (2)
Roof ladder
Security light
Spare tire with carrier
3-burner range with oven
Microwave
Water heater bypass
Black tank flush
Tile-look tub/shower surround

OPTIONS

Ivory gel-coated sidewalls (mandatory)
Keyless main entrance door
Thermal-pane, tinted, safety-glass windows
MOR/ryde pin box
Outside grill (standard 28.5BHDS, 31.5BHDS)
Bolt-on rear hitch
15,000-BTU air conditioner
Solid-surface kitchen countertops with under-mounted sink/covers
Free-standing table and chairs
Linoleum in living area (28.5RLTS, 29.5RLDS)
J-Cube in lieu of bunkroom dinette (31.5BHDS)
Recliners in lieu of swivel chairs (select models)
2nd air conditioner in bedroom, 13,500-BTU ducted

EAGLE FIFTH WHEELS

STANDARD EXTERIOR EQUIPMENT

Deluxe Graphics Package with Russet Brown Glazed accent cap and skirting
High-gloss, gel-coated fiberglass sidewalls
TuffShell vacuum-bonded laminated sidewalls, slideout walls and rear wall
Fully enclosed and heated underbelly
Magnum Truss Roof System
I-Class cambered structural I-beam frame
Climate Shield ultimate weather protection
E-Z Lube axles
Nev-R-Adjust brakes
MOR/ryde CRE 3000 suspension system
30" x 72" main entrance door
G20 dark-tinted, safety-glass windows
Drop-frame, pass-thru storage (n/a 31.5FBHS)
Exterior marine-grade speakers (2)
Outside kitchen (34.5BHDS)
Dual 30-lb. propane gas bottles with auto regulator
Enclosed and heated Uni-Dock utility center
Black tank flush
Oversized fresh water system and holding tanks
50-amp service
Cable/satellite prep
Bedroom air conditioner prep
Electric, wide-stance rear stabilizer jacks
Under-mounted spare tire
Frame fully prepped for bike rack/cargo tray (n/a 30.5BHLT)

STANDARD INTERIOR EQUIPMENT

Raised-panel cabinetry with lumbercore, screwed construction
Steel ball bearing drawer guides, 75-lb. capacity, full extension
21 gal./hr. quick recovery gas/electric DSI water heater (10 gal.)
8 cu. ft. refrigerator
Command Center for switches includes 12V cell phone charger
Multi-media premium sound system with AM/FM/CD/DVD and MP3 input jack
Key fob remote for slideouts, awning, patio light and jacks
Ceiling fan and light
Closeable and directional air conditioner vents
Mirrored/lighted dinette ceiling feature
Hide-a-bed sofa with tri-fold Denver Mattress
Porcelain bath stool with foot flush
60" x 80" pillowtop Denver Mattress with quilted bedspread
300-lb. bunk bed capacity

CUSTOMER VALUE PACKAGE (MANDATORY)

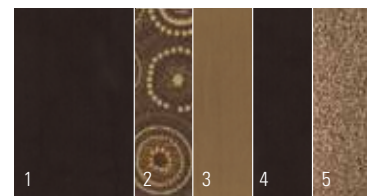
16" radial tires with aluminum rims
Electric patio awning with LED lights
Outside shower
13,500-BTU air conditioner with Chillgrille feature
32" HDTV
Microwave
Oversized 21" oven
Water heater bypass
Bath power vent
Tile-look tub/shower surround

OPTIONS

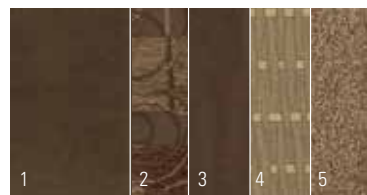
Ivory gel-coated sidewalls (mandatory)
Keyless main entrance door
Thermal-pane, tinted, safety-glass windows
MOR/ryde pin box
Bumper-mounted grill
Bike rack/cargo tray (n/a 30.5BHLT)
15,000-BTU air conditioner
Solid-surface kitchen countertops with under-mounted sink/covers
Free-standing table and chairs (standard 31.5RLTS, 33.5RETS and 33.5RKTS)
Electric fireplace (31.5RLTS)
Ledgestone fireplace with 40" HDTV (33.5RETS)
Linoleum in living area (standard on 30.5BHLT, 31.5FBHS, 33.5RKTS and 34.5BHDS)
Recliners in lieu of swivel chairs (select models)
2nd air conditioner in bedroom, 13,500-BTU ducted
Dinette with folding bunk in bunk room (34.5BHDS)

INTERIOR DÉCOR CHOICES

CHESTNUT



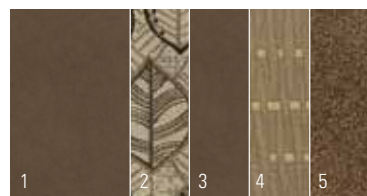
BROWNSTONE



PEWTER



ALMOND



- | | |
|----------|-------------|
| 1 Sofa | 4 Bedspread |
| 2 Accent | 5 Carpet |
| 3 Chair | |

EXTERIOR CONVENIENCES

DROP-FRAME, PASS-THRU STORAGE



FOR A COMPLETE LIST OF STANDARDS AND OPTIONS, SCAN HERE WITH YOUR SMARTPHONE OR VISIT JAYCO.COM.



MAKE EVERY SEASON ... CAMPING SEASON

Extend your camping season with the Jayco Climate Shield — the ultimate in weather protection. Designed for efficient heating and cooling, Climate Shield protects against extreme heat and extreme freezing — even when temperatures hit a high of 100° F or a low of 0° F.

The Climate Shield features the following R-values.

VALUE	UNIT AREA	TYPE OF INSULATION
R-5	All vertical walls	Block foam
R-15	Behind front cap	Double R-7 insulation
R-27	Roof	Double R-7 insulation + R-14 foil
R-29	Main floor	Double R-7 insulation + R-14 foil
R-14	Slide floor	R-14 foil
R-22	Bedroom floor	R-7 insulation + R-14 foil
R-14	Inside open pin box	R-14 foil

SUPERIOR CONSTRUCTION

MAGNUM TRUSS ROOF SYSTEM

- 1 4 1/2" crowned wood trusses
- 2 3/8" roof decking, screwed down at every seam
- 3 Residential attic-style insulation
- 4 One-piece, sidewall-wrapped DiFlex II material

WALL CONSTRUCTION

- 5 TuffShell vacuum-bonded sidewalls, slideouts, back wall
- 6 Smooth fiberglass exterior
- 7 Welded aluminum frames
- 8 Double-layer of front cap fiberglass insulation

FLOOR CONSTRUCTION

- 9 5/8" tongue-and-groove plywood on 2" x 3" wooden floor joists on 16" centers
- 10 Full-width outriggers
- 11 Flexfoil and fiberglass insulation



LIVING ROOM

0°F 70°F
100°F 69°F

KITCHEN

0°F 69°F
100°F 70°F

BATHROOM

0°F 71°F
100°F 68°F

HOLDING TANK

0°F 60°F
100°F 72°F

BEDROOM

0°F 71°F
100°F 71°F



CLIMATESHIELD

ULTIMATE WEATHER PROTECTION

* Eagle was tested in 0° F and 100° F weather over an extended period of time in a controlled environment and all functions of the coach were fully operational. Testing cannot account for natural elements, such as wind or moisture. In actual use, unit may not perform as well. In addition, outside components are subject to freezing and require steps to properly insulate. Jayco's warranty does not cover damage caused by freezing.

2-YEAR WARRANTY*

Peace of mind comes standard



Nobody offers a better warranty than Jayco. With our exclusive 2-year Co-Pilot Limited Warranty, the only strings we attach are those that deliver the ultimate in reliability. At Jayco, your peace of mind is our priority, and that's the Jayco difference.

*For a copy of our 2-year limited warranty with full terms and conditions, please contact your local Jayco dealer or visit Jayco.com.

300 JAYCO DEALERS

A four-decade strong network

From the sales experience to service after the sale, we consider our dealers to be an important part of the Jayco family. Establishing a solid relationship with your local Jayco dealer is a key component in the enjoyment of your new Jayco. By purchasing from a local dealer, you will have a convenient location for sales, parts and service support. We hope you consider them a part of your camping family.

Your local dealer

1-YEAR FREE

Roadside Assistance

Travel worry-free with Jayco's Customer First Roadside Assistance program, yours at no cost during your first year of ownership. This program is offered through Coach-Net, the country's largest RV emergency road service, and gives you immediate access to assistance.

Coach-Net
RV Technical & Roadside Assistance



Generations of family fun.

THE JAYCO STORY BEGAN IN 1968 WITH OUR FAMILY—THE BONTRAGERS. Lloyd Bontrager created an innovative, easy-to-use lifter system that led to a better fold-down camper. Loaded with more conveniences, he believed his camper would bring families closer together.

Since then, Jayco has helped generation after generation create family stories — good, old-fashioned family fun built around campfires with a Jayco RV nearby. At Jayco, we strive to build family-friendly products that will outlast just about everything but your memories. We'd love nothing more than to be a part of your family story. Join us in our generations of family fun.

eco advantage™

Jayco's long-term commitment to protecting the environment



Scan this QR code with your smartphone to watch a video about our efforts and the impact we're making on our planet.
jayco.com/ecoadvantage

Follow us on



Jayco, Inc., P.O. Box 460, Middlebury, IN 46540, www.jayco.com 

See dealer for further information and prices. All information in this brochure is the latest available at the time of publication approval. Jayco reserves the right to make changes and to discontinue models without notice or obligation. Photos in this brochure may show optional equipment and props for photography purposes. RVs built for sale in Canada may differ to conform to Canadian codes. ©2013 Jayco, Inc. 14-EAGL-PL 0214-20K Printed in U.S.A.