

Roamer





Model: RF345RLS Shown with All Dark Wood & Pinto Decor

Roamer^s

FIFTH WHEELS







Model: RT288FLR Shown with Two-Tone Wood & Steel Decor

Roamer
TRAVEL TRAILERS





RT310BHS



RT310BHS



RT310BHS (Party Room Package)



Model: RT291RLS



Pots & Pans Drawer



Outside Kitchen



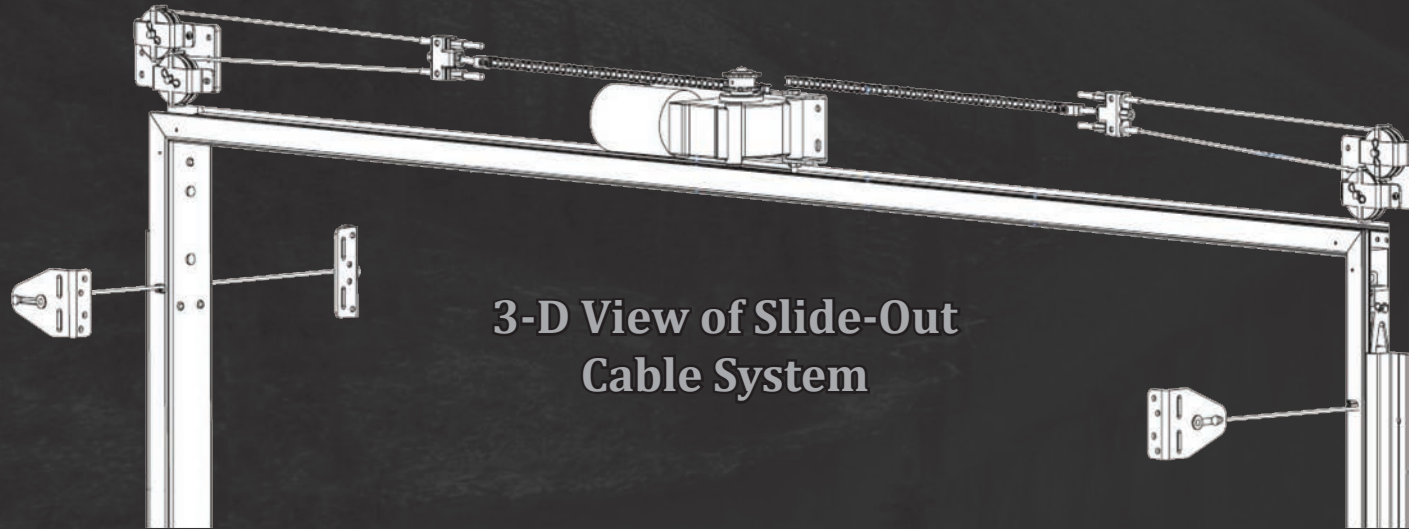
Full Extension Drawers



U-Lounge Bed



SLIDE-OUT SYSTEM

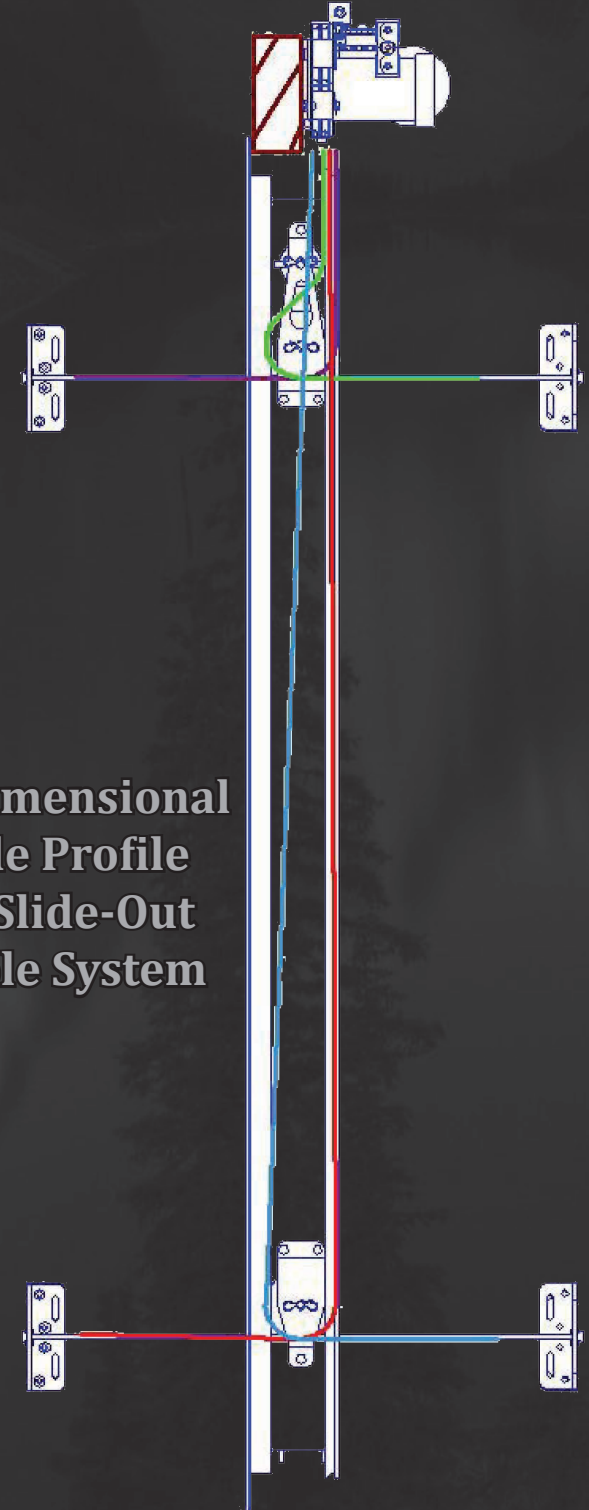


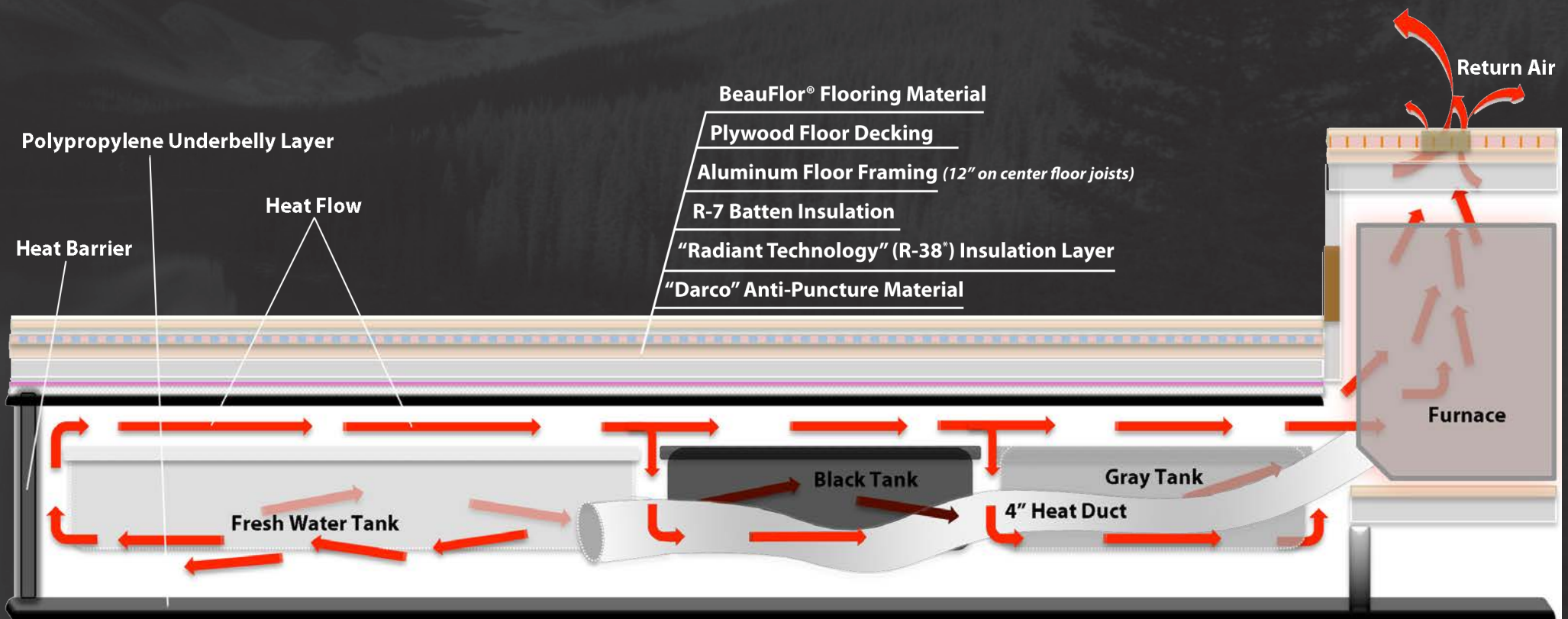
3-D View of Slide-Out Cable System

10 Reasons Why... Accu-Slide

1. Above floor design means more storage area for your RV
2. Lightweight design promotes fuel savings
3. High strength stainless steel aircraft cable is used for control
4. Cable control at all 4 room corners helps stop leaks
5. Working components are in your RV, safe from the elements
6. Locking motor secures room in or out to help stop leaks
7. Above floor design minimizes maintenance requirements
8. A clean system - no leaky hydraulic lines or greasy drives
9. Smooth, quiet room movement - no jumping or jerking
10. It's built in the U.S.A. and backed by BAL since 1972

1- Dimensional Side Profile Of Slide-Out Cable System



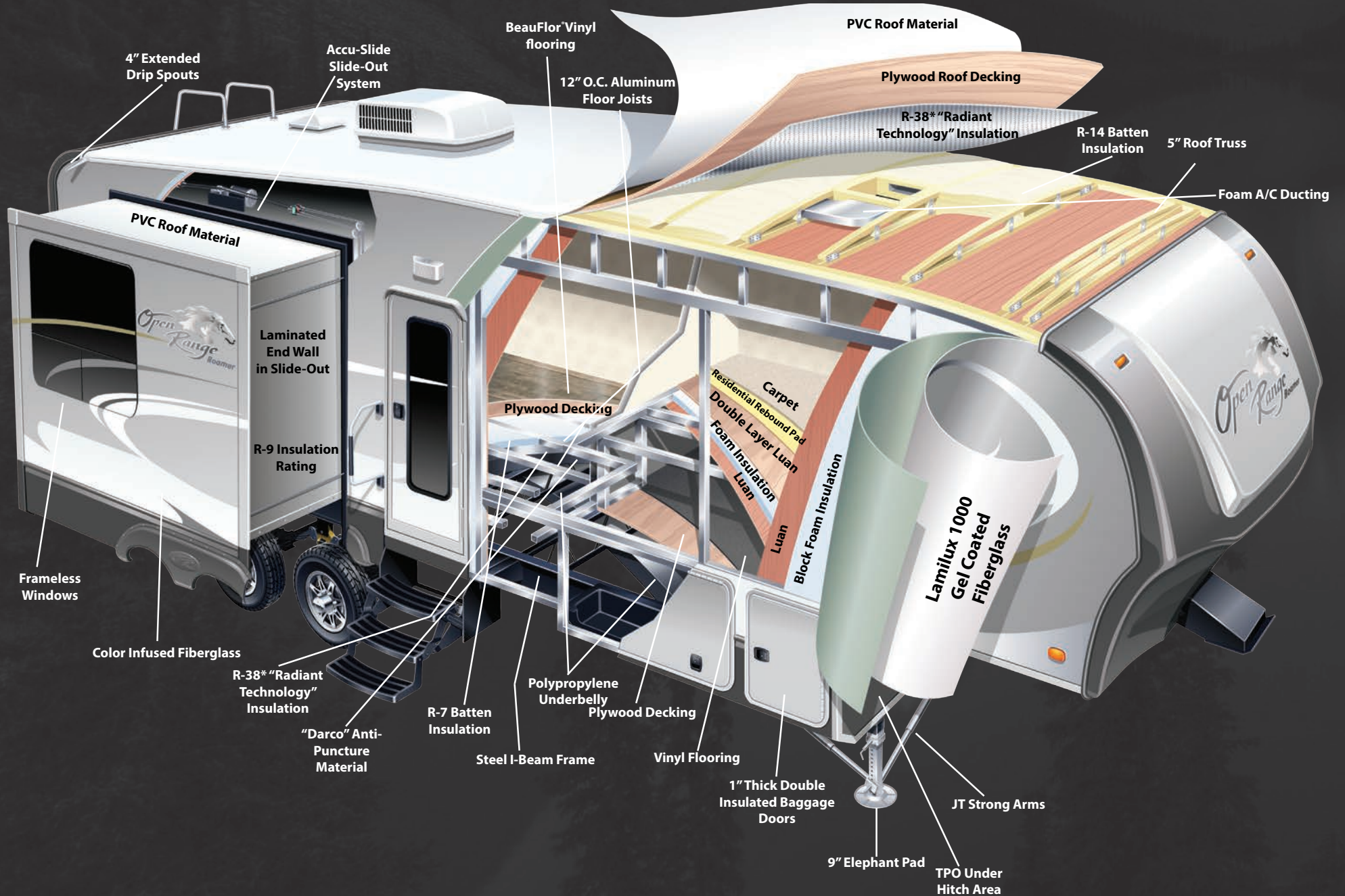


**Roamer Fifth Wheel Diagram Shown*

HEATING SYSTEM:

The Roamer product line has the most efficient heating system in the industry. The extra large 4" heat duct hose is placed right next to the fresh water tank. The suspended holding tanks are specifically designed to allow for heat to surround all sides adequately as it moves throughout the belly area. As the heat moves it reflects off of a "heat barrier" that is installed just behind the rear tank to keep the heat isolated to the tank area only. As the heat reflects, it moves its way forward where the heat naturally rises and then returns back into the camper through a return air vent. This system keeps the heat isolated, delivering as much heat to the tanks as possible while returning back into the camper for propane efficiency and maximum performance!

FIFTH WHEEL CONSTRUCTION



STANDARD FEATURES:

- HEAVY DUTY FULL EXTENSION DRAWER GUIDES
- LIPPERT EQUA-FLEX SUSPENSION
- PVC ROOF MATERIAL
- LARGE LAVATORY SINK
- LP QUICK CONNECT
- NITROGEN FILLED RADIAL TIRES
- PORCELAIN TOILET W/ FOOT PEDAL FLUSH
- 80 LBS OF LP CAPACITY (TT 60LBS CAPACITY)
- 50 AMP SERVICE
- EXT. UTILITY CENTER W/ BLACK TANK FLUSH
- 100" WIDE BODY FRAME
- "MAXX AIR" VENT COVER
- LIPPERT WIDE-STANCE AXLES
- FRONT & REAR STABILIZER JACKS (TT)

EXECUTIVE PACKAGE: (MANDATORY)

- ONE-TOUCH AUTOMATIC LEVELING SYSTEM (FW)
- 30" OTR MICROWAVE (FW)
- CONCEALED HINGES
- FLAT SCREEN TV IN LIVING AREA
- 15K BTU A/C W/"QUICK COOL" FEATURE (FW)
- WESTERN ASPEN CABINET DOORS
- 12V CD/DVD PLAYER W/ BLUETOOTH®
- 10 GAL. GAS/ELECTRIC WATER HEATER (FW)
- LED LIGHTING IN CEILING
- USB /12V CHARGING PORT
- 6 GAL. GAS/ELECTRIC WATER HEATER (TT)
- CROWN MOLDING
- MULTI-PORT SATELLITE HOOK-UP
- CORIAN® COUNTERTOPS
- WIRED AND FRAMED FOR 2ND A/C
- DIGITAL TV ANTENNA W/BOOSTER
- FANTASTIC FAN IN KITCHEN (FW)
- FULL VIEW VENTED ENTRANCE DOOR
- LARGE 8 CU FT REFRIGERATOR (FW)
- POWER AWNING W/ LED AWNING LIGHT
- FRAMELESS WINDOWS

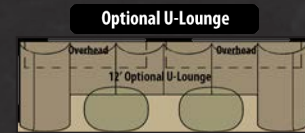
FOUR SEASONS PACKAGE: (MANDATORY)

- R-38" INSULATION IN ROOF & FLOOR
- HEATED AND ENCLOSED UNDERBELLY
- DIGITAL THERMOSTAT
- R-9 INSULATION IN SIDEWALL
- DOUBLE INSULATED BAGGAGE DOORS
- INSULATED SLIDE FLOORS
- ATWOOD® HIGH PERFORMANCE FURNACE
- HEATED STORAGE AREA (FW)
- HEATED & ENCLOSED DUMP VALVES

*CALCULATED

OPTIONS:

- 24" BEDROOM TV
- FIREPLACE (MOST FLOORPLANS)
- DYSON VACUUM CLEANER
- ADDITIONAL FANTASTIC FAN
- RECLINERS IPO SWIVEL ROCKERS (MOST FLOORPLANS)
- ALL DARK WOOD
- 2 BAR STOOLS
- 2ND A/C (13.5k BTU DUCTED)
- DUAL PANE WINDOWS
- BBQ GRILL
- U-LOUNGE IPO TABLE & CHAIRS/SOFA (SELECT FLOORPLANS)



FIFTH WHEELS ONLY

- LP GENERATOR PREP
- CEILING FAN
- DINETTE BOOTH IPO TABLE & CHAIRS
- CORIAN® ISLAND ON CASTORS
- 12 CU. FT. REFER

TRAVEL TRAILERS ONLY

- ONE-PIECE FIBERGLASS FRONT CAP
- 8 CU. FT. REFRIGERATOR
- POWER TONGUE JACK
- POWER FRONT & REAR STABILIZER JACKS
- LOCK ARM STABILIZER BARS
- 15k BTU MAIN A/C

**PLEASE CONTACT YOUR LOCAL DEALER TO ENSURE AVAILABILITY OF STANDARDS AND OPTIONS ON A SPECIFIC FLOORPLAN.

INTERIOR DECORS:



LACE

Sofa Accent
U-Lounge Back
Booth Back
U-Booth Back

Sofa
Recliner
Booth Dinette
U-Booth/U-Lounge Seat



PINTO

Sofa Accent
U-Lounge Back
Booth Back
U-Booth Back

Sofa
Recliner
Booth Dinette
U-Booth/U-Lounge Seat



SEDONNA

Sofa Accent
U-Lounge Back
Booth Back
U-Booth Back

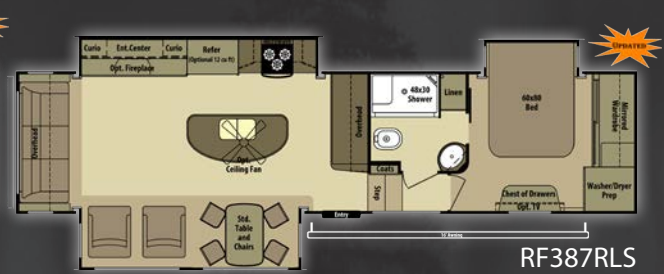
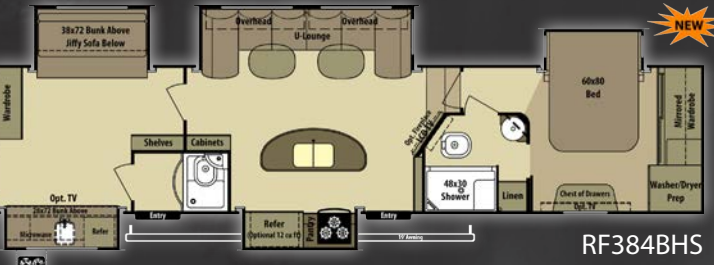
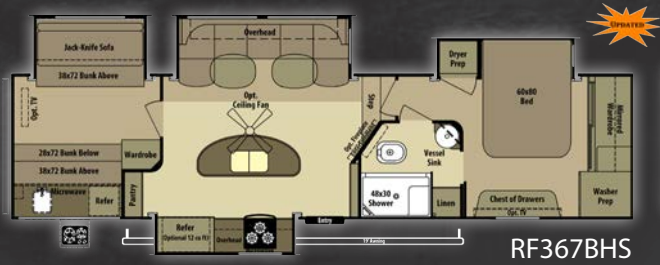
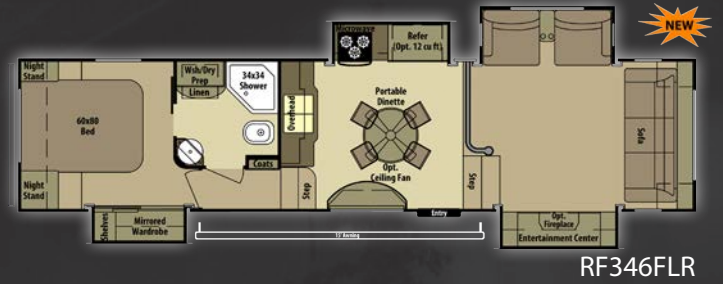
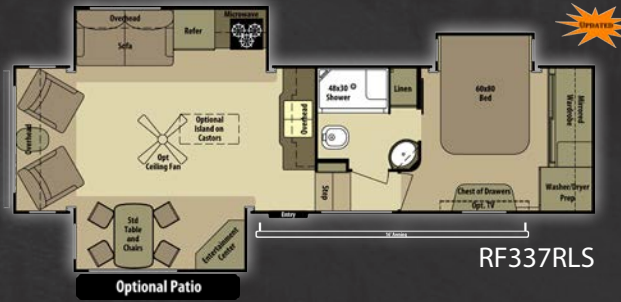
Sofa
Recliner
Booth Dinette
U-Booth/U-Lounge Seat



STORM

Sofa Accent
U-Lounge Back
Booth Back

Sofa
Recliner
Booth Dinette Seat
U-Lounge Seat



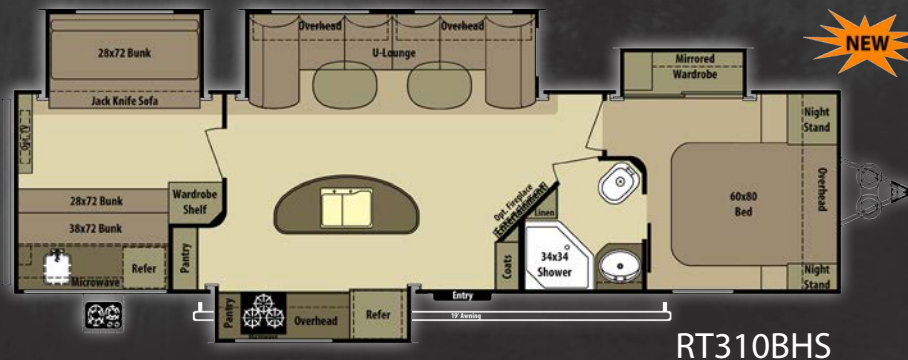
Roamer

Fifth Wheels

	UVW	Hitch Wt.	Axle Wt.	Gross NCC	Net NCC	Ext. Length	Ext. Height	Fresh Water	Gray Water	Waste	Furnace (BTU's)
RF316RLS	9055	2085	6970	3430	2644	30'10"	155"	85	82	41	35,000
RF337RLS	9657	2320	7337	3063	2277	33'6"	155"	85	57	41	35,000
RF338RLS	10600	2230	7830	4170	3384	35'4"	155"	85	82	41	35,000
RF345RLS	9890	2440	7450	2950	2164	34'6"	155"	85	57	41	35,000
RF346FLR	10590	2490	8100	3900	3114	37'7"	155"	85	57	41	40,000
RF357RES	9995	2348	7647	2753	1967	35'2"	155"	85	57	41	35,000
RF367BHS	11135	2275	8860	3465	2679	36'10"	155"	85	82	41	35,000
RF384BHS	12135	2295	9840	4160	3374	40'7"	155"	85	82	82	35,000
RF387RLS	10375	2281	8094	3906	3120	37'	155"	85	82	41	35,000
RF395BHS	11295	2010	9285	4700	3929	39'4"	155"	85	74	74	40,000
RF430RLS	11755	2425	9330	3845	3059	42'	155"	85	82	41	40,000



RT288FLR



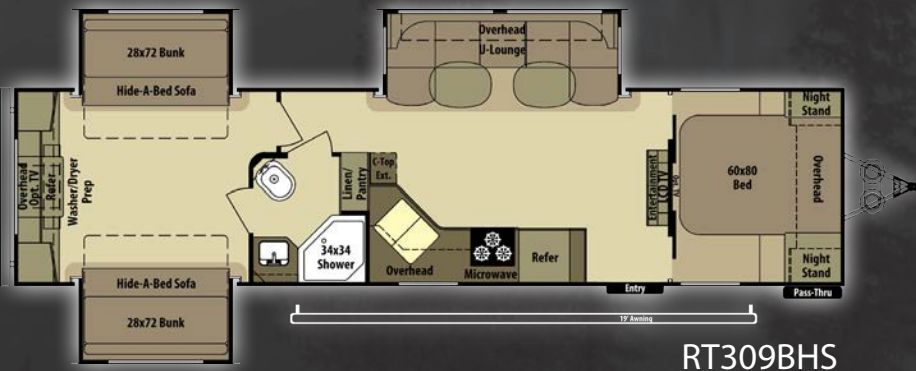
RT310BHS



RT291RLS



RT316RLS



RT309BHS



RT320RES

Roamer

Travel Trailers

	UVW	Hitch Wt.	Axle Wt.	Gross NCC	Net NCC	Ext. Length	Ext. Height	Fresh Water	Gray Water	Waste	Furnace (BTU's)
RT288FLR	7480	1000	6480	2320	1845	33'6"	140"	50	60	30	30,000
RT291RLS	7710	995	6715	2085	1610	33'6"	140"	50	60	30	30,000
RT309BHS	8955	975	7980	2420	1945	37'10"	140"	50	57	31	30,000
RT310BHS	8945	1125	7820	2555	2080	36'10"	140"	50	57	31	30,000
RT316RLS	7760	1290	6470	2230	1755	33'8"	140"	50	57	30	30,000
RT320RES	7365	845	6520	2625	2150	34'9"	140"	50	60	30	30,000

Visit Us @ www.OpenRangeRV.com



- "Build Your Own"
- Detailed Floorplans & Specs
- Contact Information
- Photo Galleries
- Frequently Asked Questions
- Customer Testimonials
- Virtual 360° Videos
- Dealer Locator
- And Much More



PURCHASE LOCALLY

Open Range RV strongly encourages our retail customers to purchase from their local dealership whenever possible due to the following reasons:

1) Our Dealers are, as a rule, independently owned and operated businesses. Outside of those customers they personally sold products to, they are not obligated to perform warranty service on Open Range RV products that were purchased elsewhere. There may be an occasion that the customer will be required to return to the point of purchase to satisfy warranty requirements.

2) Although many dealerships will eventually service products not purchased at their dealership, they will usually take care of their customers and other Open Range RV customers who are traveling away from their local dealer as a priority.

3) Local purchases allow a customer to establish a relationship with a dealer close to home. This relationship provides the customer with a convenient location for service and support from a "local" professional.

4) The opportunity for a thorough PDI (Pre Delivery Inspection) and product orientation is an additional benefit of buying from a local dealer. The opportunity for refresher courses or the ability to get questions answered more promptly is another additional benefit of buying from a local dealer.

5) For our Canadian customers, there are also requirements which must be met to bring an RV purchased out of the country to their home. Although not impossible, these requirements may involve such things as additional inspections, certifications, taxes and fees. The local Canadian Dealer is a professional at meeting these requirements.

6) Open Range's goal is for all RV Owners to fully enjoy their RV experience. In light of this goal, and considering the advantages of buying locally, we encourage you to be thorough when determining what product to purchase and which dealer to purchase it from as both are key to your ultimate satisfaction.




OPEN RANGE

Open Range RV Company 3195 N. St. Rd. 5 Shipshewana, IN 46565

Phone: (260) 768-7771 - www.OpenRangeRV.com

Due to continual research and advances, manufacturer reserves the right to change specifications, design, price, and equipment without notice, and assumes no responsibility for any error in the literature. Some items shown are not included as standard or optional equipment.

©2013 Open Range RV Company, Shipshewana, Indiana

Published Date: Nov. 29th, 2013

Your Open Range Dealer: