



SALEM HEMISPHERE

TRAVEL TRAILERS & FIFTH WHEELS LITE

LIVE. LAUGH. CAMP!

HEMISPHERE



272RLIS

WALNUT DECOR



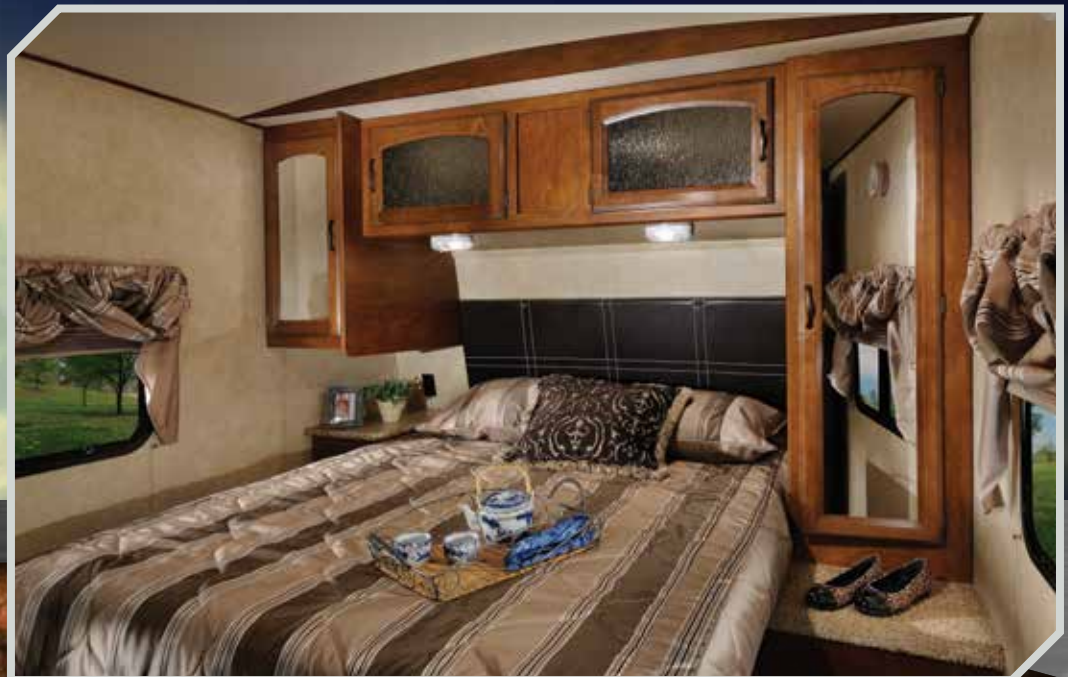
RESIDENTIAL LOOK...

CATHEDRAL CEILING



TRAVEL TRAILERS

SALEM HEMISPHERE UNDERSTANDS THE VALUE OF FAMILY, WHICH IS WHY WE OFFER A DIVERSE SELECTION OF FLOORPLANS TO MEET THE CAMPING NEEDS OF YOUR FAMILY! YOU CAN BREATHE EASY WITH A HEMISPHERE TRAVEL TRAILER OR FIFTH WHEEL, AS QUALITY IS OUR NUMBER ONE PRIORITY. ENJOY THE CAMPING LIFESTYLE WITH THE THINGS THAT MATTER AND CELEBRATE YEARS OF MEMORIES IN YOUR SALEM HEMISPHERE!



LIVE.
LAUGH.
CAMP!

312QBUD

WALNUT DECOR



(OPTIONAL TV AND JIFFY SOFA SHOWN)



CATHEDRAL CEILING

RESIDENTIAL FEEL...





327RES

FRENCH ROAST DECOR





FIFTH WHEELS

WHETHER IT IS JUST THE TWO OF YOU OR A CAMPER FULL OF KIDS, SALEM HEMISPHERE FIFTH WHEELS MAKE SURE THERE IS PLENTY OF ROOM FOR EVERYONE ON YOUR NEXT CAMPING TRIP. WE UNDERSTAND THAT FAMILIES COME IN MANY DIFFERENT SIZES, WHICH IS WHY WE OFFER MANY FUNCTIONAL FLOORPLANS TO MEET YOUR NEEDS. CREATE MEMORIES THAT YOU WILL TALK ABOUT FOR YEARS IN YOUR SALEM HEMISPHERE!



ONE LEVEL 6'5" FULL STAND UP HEIGHT UPPER DECK (SHOWN WITH OPTIONAL TV)



HEMISPHERE INTERIOR FEATURES

- | | | |
|--|---|--|
| <p>A. OVERHEAD CABINET 14" DEEP FOR LARGE PLATES</p> <p>B. HUGE STORAGE DRAWER AT BASE OF DINETTE</p> <p>C. 6'5" 5TH WHEEL SLIDE-OUT INTERIOR HEIGHT (BEDROOM SLIDES N/A)</p> <p>D. (4) CUBE SPEAKER SOUND SYSTEM</p> <p>E. LG SOLID SURFACE COUNTERTOPS</p> | <p>F. AM/FM, CD PLAYER W/ MP3 HOOKUP</p> <p>G. DECORATIVE OVERHEAD DINING LIGHT</p> <p>H. SOLID WOODFRAME MORTISE AND TENON DOORS</p> <p>I. U-DINETTE (MOST BUNK MODELS)</p> <p>J. RESIDENTIAL STAINLESS STEEL MICROWAVE</p> <p>K. 3-BURNER RANGE WITH STAINLESS STEEL OVEN & VENT HOOD</p> | <p>L. WROUGHT IRON CURTAIN RODS</p> <p>M. ONE PIECE PLANK WOOD LINOLEUM FLOORING</p> <p>N. RESIDENTIAL STYLE CARPET</p> <p>O. 32" LCD TV (STANDARD ALL 5TH WHEELS)</p> <p>P. FULL EXTENSION BALL BEARING DRAWER GUIDES</p> |
|--|---|--|

HEMISPHERE RESIDENTIAL STYLE FEATURES



BLACK TANK FLUSH



HEATED AND ENCLOSED UNDERBELLY INCREASES AERODYNAMICS WITH INSULATION BARRIER AND PEST PROTECTION



DOCKING STATION WITH QUICK WINTERIZATION FEATURE (FIFTH WHEELS ONLY)



RADIUS EDGE LG® SOLID SURFACE KITCHEN COUNTERTOPS.



HUGE FINISHED AND INSULATED FIFTH WHEEL PASS-THRU STORAGE AND VACUUM BONDED UPPER DECK



DELUXE WOOD DINETTE TABLE TOP



HIGH RISE FAUCET WITH INTEGRATED PULL OUT SPRAYER AND UNDERMOUNT SINK



PAINTED GEL COAT FIBERGLASS FRONT CAP ON TRAVEL TRAILERS AND FIFTH WHEELS WITH LIGHT STRIPS. WON'T FADE, CHALK OR CRACK



356QBQ BUNK ROOM WITH 2ND FULL BATH OFF REAR (OPTIONAL TV AND JIFFY SOFA SHOWN)

HEMISPHERE HAS PLENTY OF ROOM FOR FRIENDS AND FAMILY WITH OUR GREAT BUNK HOUSE MODELS



WIDE TRACK SUSPENSION (TRAVEL TRAILERS ONLY) WITH ALUMINUM RIMS



STANDARD EXTERIOR TV BRACKET ON EVERY HEMISPHERE



16 GAL. PER HOUR G/E QUICK RECOVERY DSI WATER HEATER



EXTRA LARGE POT AND PAN DRAWERS AT THE DINETTE BASE

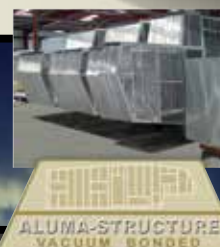


Amish Craftsmanship



EXCELLENT CRAFTSMANSHIP

Only the finest attention to detail goes into each Hemisphere. Our skilled craftsman have many years of experience building beautifully finished cabinetry. The solid nature of our well designed woodwork is another reason why Hemisphere is the best built RV on the road.



The Salem Hemisphere has a Welded Aluminum Superstructure that is regarded as the Industry's finest, pictured above is the heavier gauge aluminum tubing used by Hemisphere vs. The Competitions lighter gauge aluminum.

- A. Triple Entry Steps
- B. Folding Entry Assist Handle
- C. Tinted Safety Glass Windows
- D. EZ-Lube Axles
- E. Heated and Enclosed Underbelly
- F. Laminated Vacuum Bonded Aluminum Sidewalls
- G. I-Beam Powder-Coated Frame with Cambered Chassis
- H. Laminated Floor
- I. Residential Stain Resistant Carpet
- J. High Density Block Foam Insulation
- K. Power Front Jacks (Fifth Wheels Only)
- L. Under-Floor Ducted Heat
- M. Ducted 13.5K BTU High Output Air Conditioning
- N. One Piece Seamless Roof (12 yr. Warranty)
- O. 3/8" Roof Decking (Full Walk-On Roof)
- P. R-14 Fiberglass Insulation in Ceiling
- Q. Standard Insulated Duct for Central Air (all Models)
- R. Painted and Gel Coated Fiberglass Front Cap
- S. Gel Coated Fiberglass Exterior
- T. Sharp Turn Radius Front Cap

HEMISPHERE CONSTRUCTION, STANDARDS AND OPTIONS

HYPER LYTE CONSTRUCTION

- EZ-Lube Axles w/ 15" Radial Tires (16" on select models)
- Painted Fiberglass Front Cap
- Aerodynamic 5th Wheel Front Cap w/ LED Light Strips
- Wide Track Suspension (Travel Trailers)
- 3 Sided Aluminum-Framed Vacuum-Bonded Construction
- Gel Coated Fiberglass Exterior
- Laminated Sidewalls
- Laminated Floor w/ In-Floor Heat
- 6'5" Full Walk-In 5th Wheel Slide-Outs (N/A Bed Slides)
- One Level, Full Stand-Up Height 5th Wheel Upper Decks
- 30" Smooth Fiberglass Radius Main Entry Door (26" Secondary)
- Swing Arm Entry Assist Handle
- Extra Large Full Pass-Thru Storage (per floorplan)
- One Touch Electric Awning w/ Adjustable Arms (1 year warranty)
- Upgraded ABS Fender Skirts
- Grab Handle at 5th Wheel Interior Steps
- Powder Coated I-Beam Frame
- Cambered Chassis
- Water Heater By-Pass
- Fifth Wheel Docking Station
- Power Flush Floor Slide-Out Systems
- 16 Gal. per hour G/E Quick Recovery DSI Water Heater (2 year warranty)
- Stabilizer Jacks
- Power Front Jacks (5th Wheels Only)
- Tinted Safety Glass Windows

KITCHEN

- LG® Solid Surface Countertops
- Dometic® Raised Panel Double Door Refrigerator (2 year warranty)
- Residential, Under Mount Sink
- Microwave w/ Carousel (1 year warranty)
- High Rise Faucet with Pull Out Sprayer
- Vented Range Hood w/ Light

- IVC Plank Wood Linoleum (Made in USA)
- Solid Wood Drawer Fronts w/ Full Extension Ball Bearing Guides
- Solid Wood Raised Panel Upper Cabinet Doors
- Large Overhead Cabinets
- Wall-Mounted Systems Monitor Panel
- Oil Rubbed Bronze Hardware

LIVING ROOM

- 13,500 BTU Ducted Roof Air Conditioner w/ Quick Cool (2 year warranty)
- Residential Stain Resistant Carpet
- Swivel Rocker(s) (per floorplan)
- Theatre Seating w/ Built-In Recliners (per floorplan)
- Oversized Dinette w/ Large Pot and Pan Drawers (per floorplan)
- Deluxe Wood Dinette Tabletop
- Solid Wood Drawer Fronts
- Extra Large 77" U-Dinette (per floorplan)
- Large Dinette Picture Window
- 360° Omni Directional Digital TV Antenna
- Cable TV and Satellite Prep
- Extra Large Overhead Cabinets w/ Glass Inserts
- Decorative Wall Light
- 30K or 35K BTU Suburban Forced Air DSI Furnace (2 year warranty) w/ Digital Thermostat
- Under Floor Heat Ducting
- Night Shades
- Air Hide-A-Bed Sofa w/ Drawer
- 28" LCD TV w/ DVD
- 32" LCD TV w/ DVD (5th wheel, 272RLIS and 299RE travel trailer floorplans)

BEDROOM

- King Bed in All Bedroom Slide 5th Wheels
- Strut Lifted Storage Area Under Bed
- Oversized Bunks (per floorplan)
- Solid Bedroom Privacy Doors

- Mirrored Wardrobe w/ Large Drawers (most floorplans)
- Swing Arm TV Bracket (5th wheel bedrooms)
- Tall, 6 Drawer Dresser (most 5th wheels)

BATHROOM

- 12-Volt Power Bath Roof Exhaust Vent
- Wooden Medicine Cabinet w/ Mirrored Door
- Dometic® Foot Flush Toilet
- Tooth Brush Holder and Towel Ring
- Vinyl Tub Surround

SECURITY AND SAFETY

- LP Leak Detector
- Smoke Detector
- Carbon Monoxide Detector
- Fire Extinguisher
- LED Hitch Light
- Welded Heavy Duty Safety Chains (Travel Trailers)
- Electric Brakes (all wheels)
- GFI Receptacles
- ANSI 119.2
- Certified to Meet National Highway Traffic Safety Administration Specifications

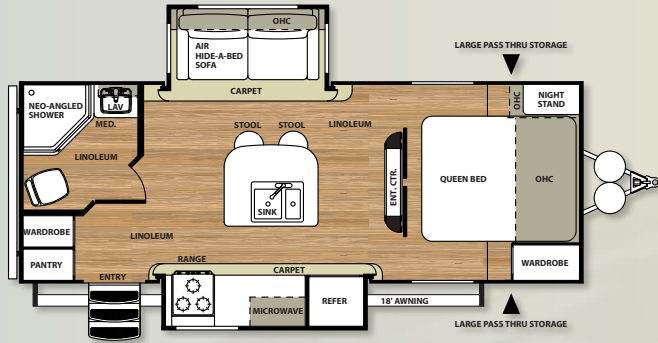
HEMISPHERE OPTIONS

- Free-Standing Dinette w/ 4 Chairs
- Living Room Ceiling Paddle Fan (5th wheels)
- Roof Ladder
- 15,000 BTU Ducted A/C w/ Quick Cool
- Outside Shower (Travel Trailers)
- 50 Amp Service
- Washer/Dryer Prep (most 5th Wheels)

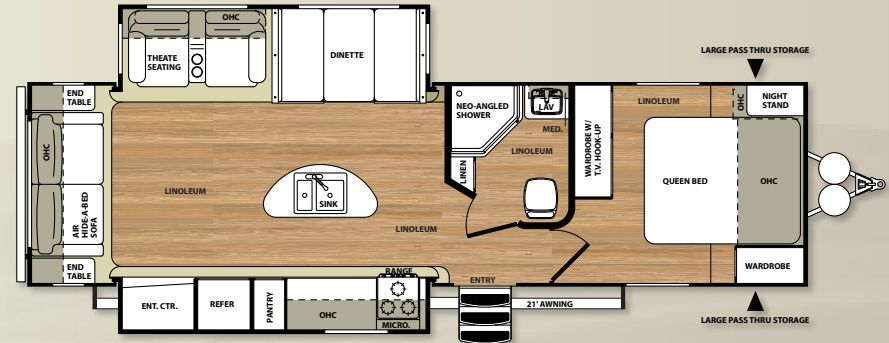
Contact your Hemisphere dealer for a complete list of options.



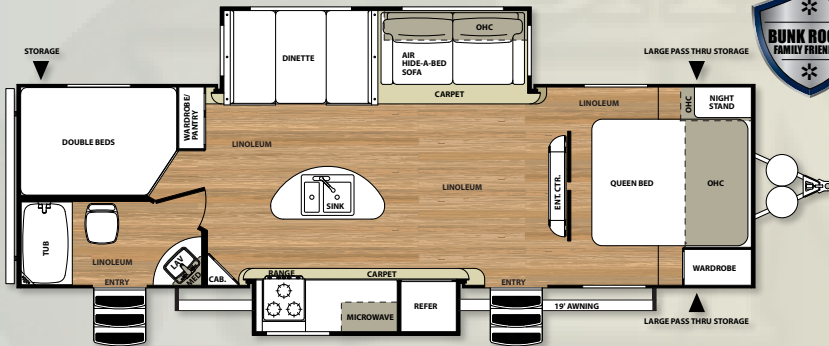
HEMISPHERE TRAVEL TRAILER FLOORPLANS



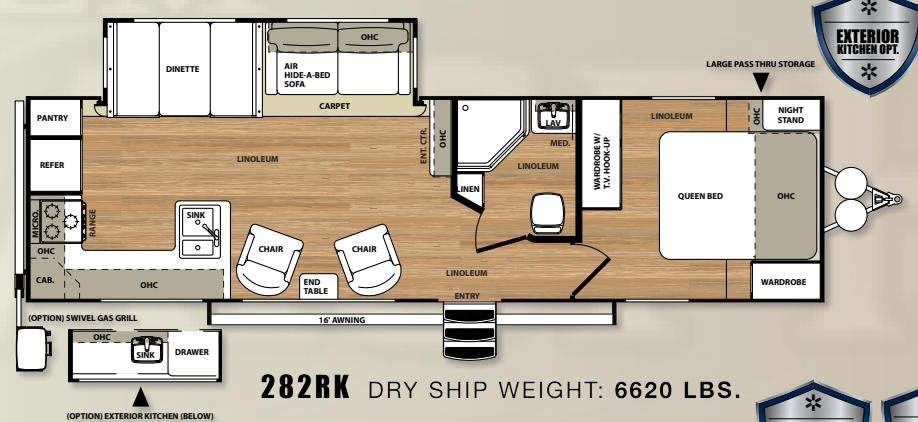
2321S DRY SHIP WEIGHT: 5720 LBS.



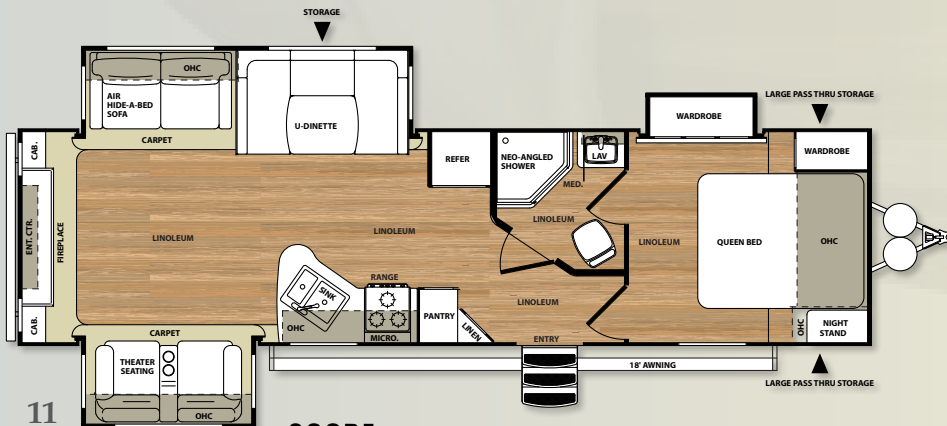
272RLIS DRY SHIP WEIGHT: 6975 LBS.



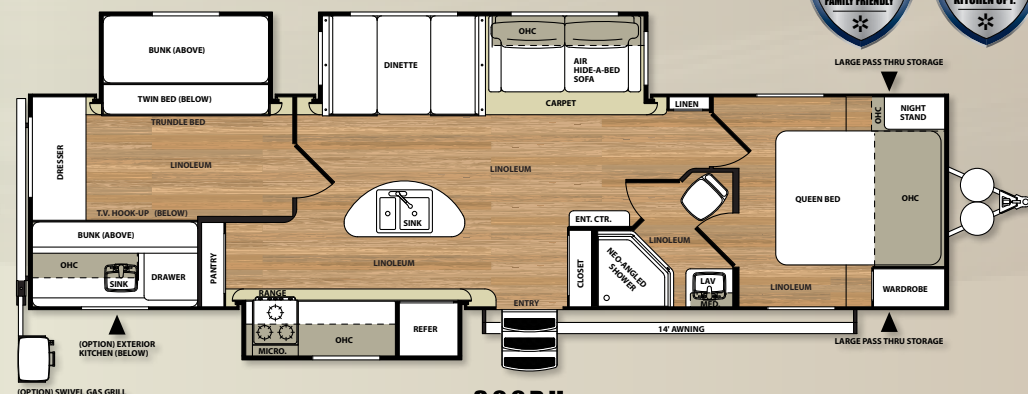
282BHIS DRY SHIP WEIGHT: 6805 LBS.



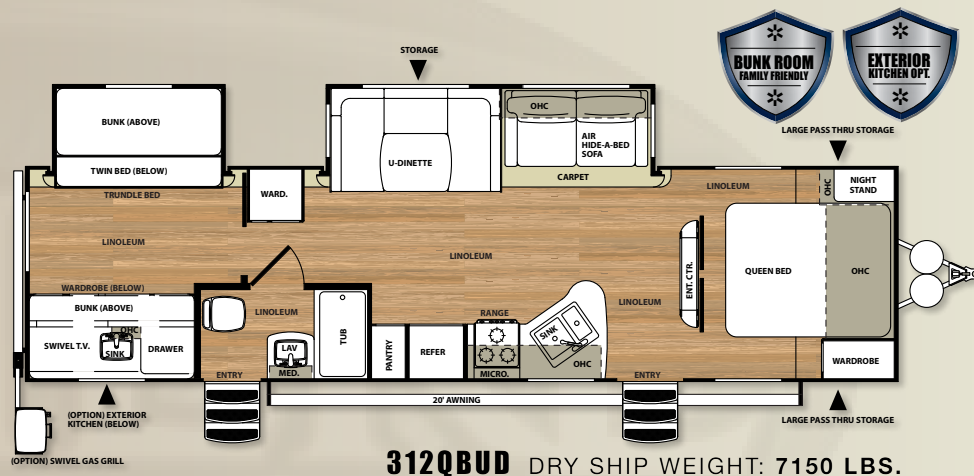
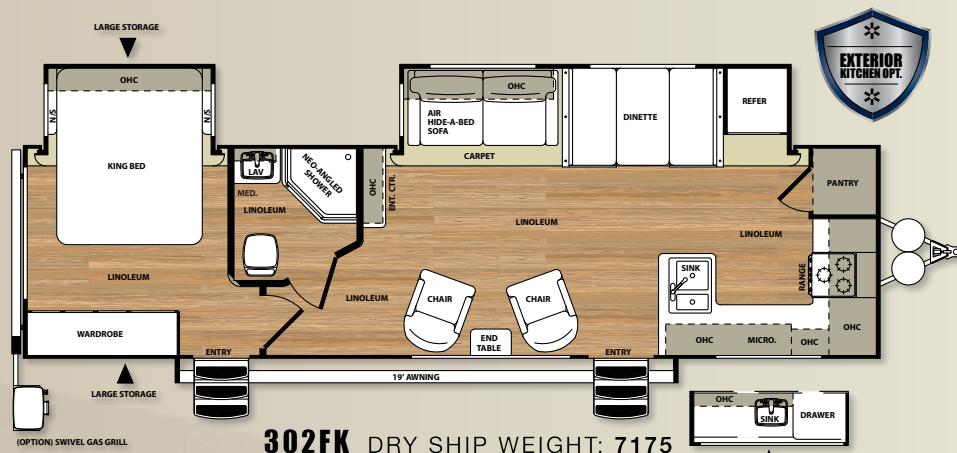
282RK DRY SHIP WEIGHT: 6620 LBS.



299RE DRY SHIP WEIGHT: 7380 LBS.



300BH DRY SHIP WEIGHT: 8250 LBS.



TRAVEL TRAILER SPECIFICATIONS

MODEL	232IS	272RLIS	282BHIS	282RK	299RE	300BH	302FK	312QBUD
Hitch Weight (lbs)	790	845	420	700	730	880	875	855
Axle Weight	5280	6390	6385	6040	6650	7500	6225	5985
Dry Ship Weight	5720	6975	6805	6620	7380	8250	7175	7150
CCC (cargo cap)	3461	2351	2356	1901	2091	2601	2516	2601
Ext Length	26'0"	34'4"	33'0"	35'0"	35'1"	37'5"	35'6"	35'10"
Ext Height	11'	11'	11'	11'	11'	11'2"	11	11"
Fresh Water Cap (gal)*	44	44	44	44	44	44	44	44
Black Water Cap (gal)	32	30	32	32	30	32	32	32
Grey Water Cap (gal)	50	48	50	64	33	64	64	62
Tire Size (in)	15"	15"	15"	15"	15"	15"	15"	15"
Awning Size (ft)	18'	21'	19'	16'	18'	14'	19'	20'

*Includes hot water heater



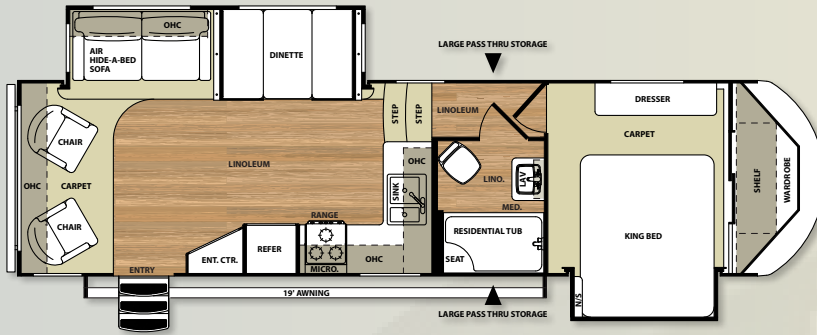
OUR EXTERIOR KITCHEN IS LOADED WITH FEATURES THAT BRING CAMPING TO A WHOLE NEW LEVEL, PERFECT FOR THE CAMP CHEF AND GREAT FOR THE GUESTS!

HEMISPHERE EXTERIOR KITCHEN

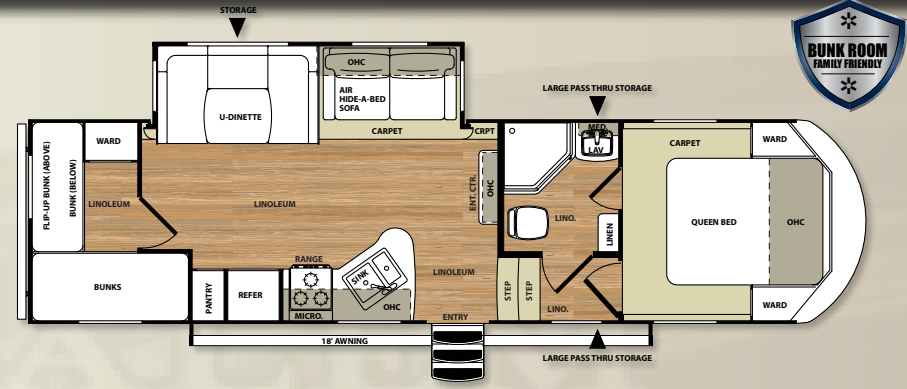
- SELF EDGE COUNTER TOP WITH PRACTICAL HEIGHT
- LARGE CABINETS FOR STORAGE
- FULL SIZE MINI FRIDGE
- FUNCTIONAL HEIGHT SINK WITH FAUCET
- CONVENIENT 110V OUTLET
- SWING ARM GAS GRILL

LIVE.
LAUGH.
CAMP!

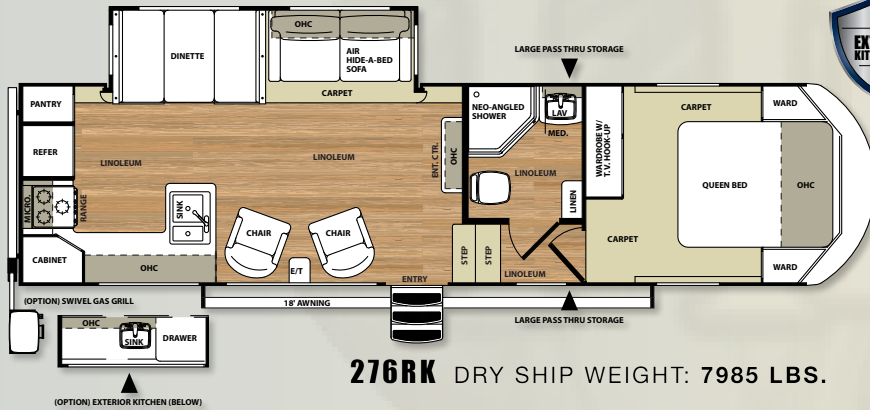
HEMISPHERE FIFTH WHEEL FLOORPLANS



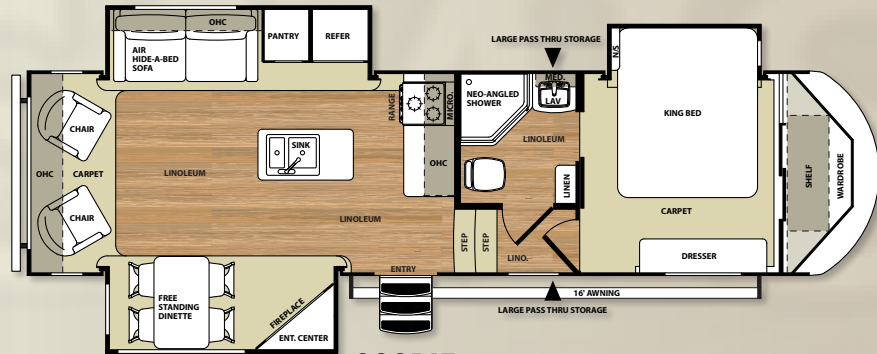
266RLBS DRY SHIP WEIGHT: 8205 LBS.



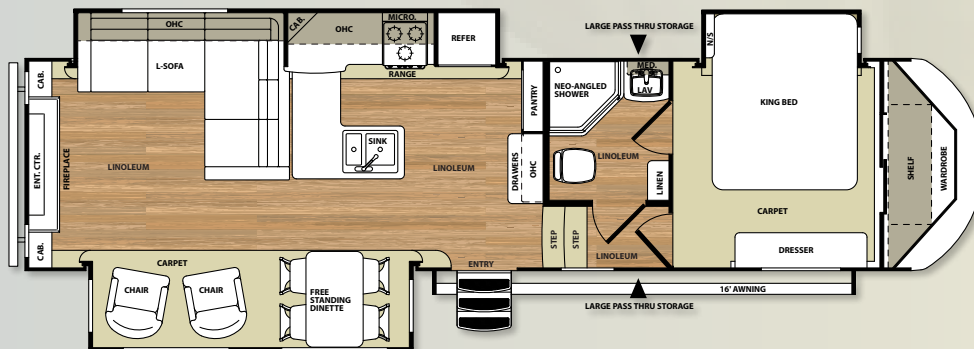
276QB DRY SHIP WEIGHT: 7995 LBS.



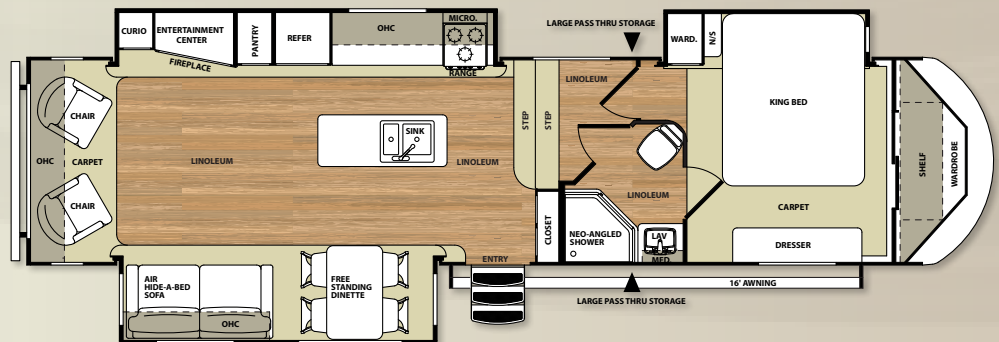
276RK DRY SHIP WEIGHT: 7985 LBS.



286RLT DRY SHIP WEIGHT: 8440 LBS.



327RES DRY SHIP WEIGHT: 9380 LBS.



336RLT DRY SHIP WEIGHT: 9455 LBS.



PRE-DELIVERY INSPECTION FACILITY

20,000 square feet of quality assurance. The bare essentials for a premium product. This state-of-the-art facility gives immediate daily feedback to production for quality assurance



Forest River, Inc. encourages our customers to purchase their Forest River products from a local dealership whenever possible for the following reasons:

It is the goal of Forest River, Inc. that all of our RV owners fully enjoy the RV experience and that customer satisfaction meets or exceeds their expectations!

- 1) Forest River, Inc. dealers are independently owned and operated businesses so priority service and scheduling is at their discretion and is often provided to customers that purchased their unit at that dealership.
- 2) Purchasing locally allows customers to establish meaningful relationships with a dealer, enhancing the RV experience through assistance with product questions, user tips or RV regulations for your state or country, and much more!
- 3) Canadian customers must meet requirements to bring an RV purchased out of the country to their home. These requirements may involve additional inspections and certifications, taxes and fees. Your local Canadian Dealer is a professional at meeting these requirements.
- 4) Scheduling timely warranty repairs and adjustments through a local dealership provides far greater flexibility and convenience to you, the customer!

24/7 EMERGENCY ROADSIDE ASSISTANCE

For a worry-free ownership experience

Forest River includes one

year of Coach-Net RV Technical & Roadside Assistance with each RV purchase. Whether new to the RV lifestyle or an experienced RV enthusiast, Forest River owners have 24/7 access to technical, operational and emergency road service coverage throughout the US & Canada. Coach-Net's fast, dependable service is just a phone call away.

Coach-Net®

RV Technical & Roadside Assistance

FREE MEMBERSHIP
to Forest River Owners' Group

www.forestriverfrog.com



WALNUT DECOR



SUEDE DECOR



FRENCH ROAST DECOR



THE SALEM FAMILY



CRUISE LITE



SALEM



VILLA SERIES



HEMISPHERE



Learn More

Scan this barcode using a QR Reader on your smart phone to learn more about Forest River.



A Berkshire Hathaway company.

Forest River, Inc.
55470 C.R. 1, Elkhart, IN 46515
(574) 389-4600

www.forestriverinc.com/hemispher
www.forestriveraccessories.com

All specifications contained herein are based on the latest product information at time of printing. Forest River reserves the right to make changes in colors, materials, equipment and specifications at any time without notice and assumes no responsibility for any errors in this brochure. The pictures in this brochure may show props and optional equipment. PLD918

© 2014 - Hemisphere - a division of Forest River Inc.
A Berkshire Hathaway company