

# BOUNDER<sup>®</sup>

BOUNDER CLASSIC



## READY TO ROAM

When you hit the road, Bounder and Bounder Classic give you everything you need. After a long day of driving, playing or exploring, Bounder welcomes you with cozy comfort and all the modern conveniences. Your journey beckons. When you're ready to answer, Bounder will take you there.



BOUNDER 33C shown in Sultry Obsidian interior décor with Spice wood cabinetry





## WHY BUY BOUNDER AND BOUNDER CLASSIC?

**More Value for Your Money** When you compare motor homes, Bounder gives you more for your dollar. It's packed with features and ready to go.

**Maximum Functionality** Bounder is known as "The Motor Home That Really Works" because it provides straightforward functionality.

**Built for Long Trips** Go right ahead and plan that cross-country journey. We built Bounder for extended travel.

**Trusted Name** Bounder has been popular for more than 20 years, with sales unmatched by any other motor home brand.

**Fully Equipped** Bounder provides the necessities for a comfortable, convenient and safe journey. It includes many features standard that others consider optional.

## 2014 GRAPHICS AND DÉCOR



Caramel Kiss



Smoked Slate



Sultry Obsidian

Both inside and out, we offer a wide selection of colors, styles and finishes. From the moment you lay your eyes on a Fleetwood RV, the high-style graphics and décor collection welcome you with gracious beauty and contemporary design. We've paid attention to every detail. So wherever you are, you'll feel right at home.

	CARAMEL KISS	SULTRY OBSIDIAN		CABINETRY
SOFA			CINNABAR	
ACCENT				
BEDSPREAD				
COUNTERTOP				
FLOORING			SPICE	
CARPET				

# BOUNDER STANDARD FEATURES AND OPTIONS

## INTERIOR THROUGHOUT

- 120V/12V AC/DC Converter
  - Water Pump Switches in Multiple Locations
  - 34,000 BTU Furnace
  - 10-Gallon Quick Recovery Water Heater w/Direct Spark Ignition (Gas/Electric)
  - Complete PEX Plumbing System
  - Deluxe Roller Bearing, Full-Extension Drawer Guides & Transit-Ship Locks
  - Dual 6V Deep-Cycle House Batteries
  - Dual Roof A/C High-Efficiency w/Solar Panel, Chill Grills & Bedroom Heat Pump
  - Energy Management System
  - LED Lighting
  - LG Solid-Surface Countertops
  - Solid Divider Doors
  - PEX Plumbing System
  - Battery Disconnect System
  - Full HD Video System
  - Wall Switches
  - Water Heater Bypass Valve
  - Whole-Coach Water Filtration System
  - Wood Drawers
  - Soft-Touch Vinyl Ceiling
  - Computer Workstation In-Dash
  - 1,200-Watt Inverter
  - Pleated Day/Night Shades
- Optional*
- CSA Package (Canadian Specs)\*\*
  - Washer/Dryer
  - Neutral Loss Protection
  - Winegard® Stationary Satellite System
  - Blu-ray® Home Theater Sound System
  - Day/Night Double-Roller Shades

## DRIVER CONVENIENCE

- 3-Point Seatbelts at Driver & Front Passenger Seats
- AM/FM Radio w/CD Player, Satellite Radio-Ready
- Auxiliary Start Circuit
- Cruise Control
- Soft-Touch Automotive Dash
- Dash Fans
- Power Front Windshield Shade
- Manual Roller Sades at Driver/Passenger Window
- Driver/Front Passenger Captain's Chairs w/Reclining Back/Slide Controls
- Passenger Chair Footrest
- Intermittent Wiper Control
- Low-Profile Engine Cover w/Snack Tray
- Monitor Panel in Dash
- Radio Switch
- Main/Auxiliary Power
- Tilt Steering Wheel
- Remote/Heated Rear-View Mirrors w/Side-View Cameras
- Dual Monitor Dash Layout

## GALLEY

- Convection Microwave Oven
  - 12 cu.ft. Dometic® 4-Door Refrigerator w/Icemaker
  - Adjustable Cabinet Shelves (Select Cabinets)
  - Demand Water Pump
  - Fan-Tastic® Power Roof Vent
  - Large Drawers Under Dinette
  - Large, Double Stainless-Steel Sink
  - Raised-Panel Cabinet Doors
  - Single-Lever Galley Faucet w/Pullout Sprayer
  - Sink Cover/Cutting Board
  - Wastebasket
  - 3-Burner Cooktop
  - Dream Dinette Table
  - Full Mosaic Glass Tile Backsplash
  - Galley Window
- Optional*
- 3-Burner Range w/Oven

## LIVING ROOM

- 40" LED HDTV (Mid-Coach)
  - DVD Home Theater Sound System
  - Residential Seat Styling
  - Vinyl Floor Covering in Lavy/Galley/Living Room
- Optional*
- 32" LED HDTV in Front Overhead (33C/35K)
  - Facing Dinette
  - Electric Fireplace
  - Free-Standing Dinette w/Credenza (33C/35K)
  - Sofa Sleeper w/Air Mattress & Footrest (36E)

## BEDROOM

- Exclusive Dream Easy Mattress
  - Bedspread w/Décor Pillows
  - Padded Headboard
  - Rear Speakers
  - 32" LED HDTV
- Optional*
- King Bed (33C)

## BATHROOM

- Fan-Tastic® Power Roof Vent w/Wall Switch
- Glass Shower Enclosure w/Skylight & Lower Step Threshold
- Hardwood Bath Door/Trims
- Molded Shower Enclosure
- Porcelain Toilet w/Water Saver
- Skylight in Shower
- Toilet Tank San-T-Flush™ System

## SAFETY/CONVENIENCE (INTERIOR)

- 10 ABC Fire Extinguisher
- Carbon Monoxide Detector/Alarm
- Propane Detector/Alarm
- Smoke Detector/Alarm
- Multiple Seatbelt Locations
- Interior Entry Grab Handle

## EXTERIOR THROUGHOUT

- 5.5 kW Onan® MicroQuiet Gas Generator
  - 50-Amp Service
  - Dual-Battery Charge Control
  - Dual-Pane Windows w/Screens
  - Fiberglass Front/Rear Caps
  - 4-Color Full-Body Paint
  - Heated Water & Holding Tank Compartments
  - Mud Flaps
  - Patio Awning - Electric
  - Utility Compartment w/Exterior Shower
  - ABS Wheel Well Trims
  - TV Antenna w/Signal Booster
- Optional*
- Protective Front Mask
  - Exterior Entertainment Center
  - Rear Ladder

## AUTOMOTIVE

- 4-Point Automatic Levelers
- Large One-Piece Bonded-in Windshield
- Trailer Hitch w/7-Pin Electrical Hook-Up†
- Underhood Utility Light
- 22.5" Aluminum Wheels
- Wiper System with Large Swept Area
- Halogen Headlights w/Polycarbonate Lens

## SAFETY/CONVENIENCE (EXTERIOR)

- Entry Door w/Screen Door & Deadbolt Lock
- Porch Light (Doorside)
- Power Entry Step
- High Mounted Taillights
- Automotive Safety Glass
- Daytime Running Lights
- Hydraulic 4-Wheel Disc Brakes w/4-Wheel ABS
- Patio Receptacle
- Park Cable Receptacle

## STORAGE

- EZ Store Compartment on Living Area Slide-Outs
- Gas Lift Strut Supports
- Hidden, Stainless-Steel Latch Rods
- Pass-Through Storage (33C/35K)
- Side Swinging Luggage Doors (Select Locations)
- Large Lighted Roto- Molded Polyethylene Compartments
- Side Swing, Insulated Aluminum Luggage Doors w/Single Paddle Latch & Corrosion Resistant Steel Hinges

## BODY STRUCTURE

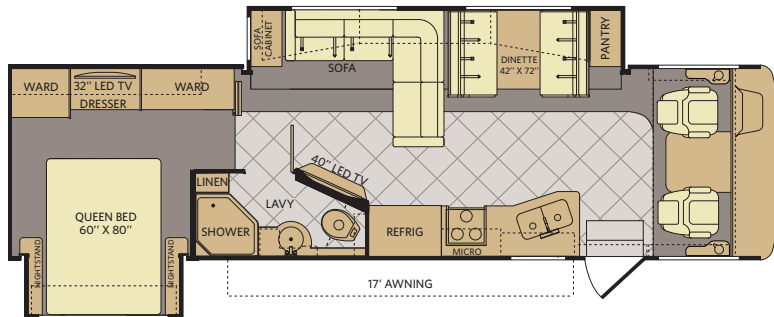
- Aluminum Interlocking Floor/Wall/Ceiling Framing
- Power Platform® Construction (Fleetwood RV Exclusive)
- Basement Floor Configuration
- Radius Roof w/Ducted A/C
- Vacu-Bond® Floor & Ceiling
- Vacu-Bond® Walls w/Smooth Exterior High-Gloss Fiberglass

\*Not all options are available on all floor plans. See your Fleetwood dealer for details.  
 \*\*CSA standards may require substitution or deletion to achieve conformance.



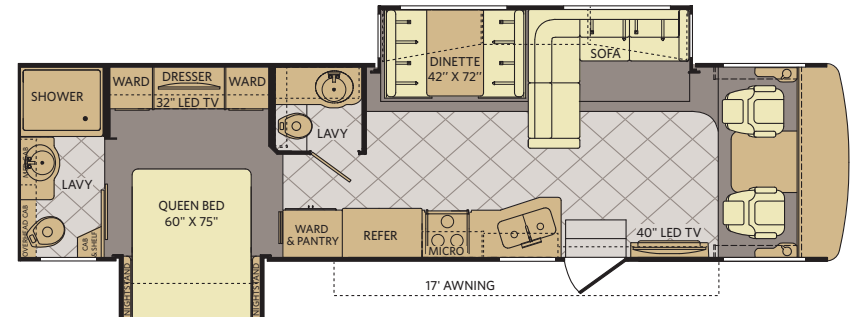
# BOUNDER FLOOR PLANS

33C



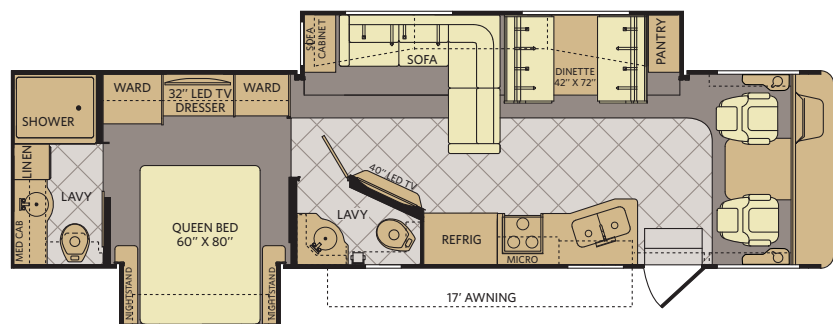
Available options: 087, 093, 113, 126, 139, 830, 833, 852

36E



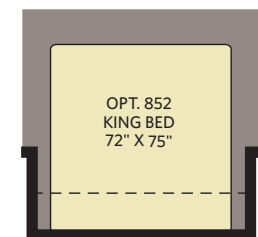
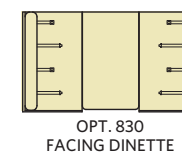
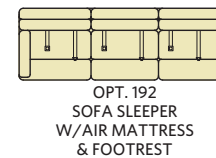
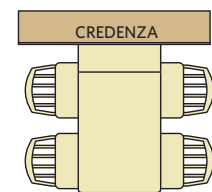
Available options: 093, 113, 126, 139, 192, 830

35K



Available options: 087, 093, 113, 126, 139, 830, 833

## FLOOR PLAN OPTIONS



# BOUNDER WEIGHTS & MEASUREMENTS

CHASSIS	POWER PLATFORM®		
MODELS	33C	35K	36E
Engine Displacement (liters)	6.8	6.8	6.8
Wheelbase (inches)	208"	228"	228"
GVWR (lbs) <sup>1</sup>	22,000	22,000	22,000
Front GAWR (lbs) <sup>2</sup>	8,000	8,000	8,000
Rear GAWR (lbs) <sup>2</sup>	15,000	15,000	15,000
GCWR (lbs) <sup>3</sup>	26,000	26,000	26,000
Hitch Rating Weight (lbs) <sup>†, ††</sup>	5,000	5,000	5,000
Tongue Weight (lbs) <sup>†</sup>	500	500	500
Fuel Capacity (gal)	80	80	80

## POWER PLATFORM® CHASSIS

**Model:** Ford®  
**Engine:** 6.8L Triton V10  
**Transmission:** 5-Speed, Automatic w/Overdrive

**Alternator:** 175 Amp  
**Torque:** 457 lb-ft @ 3,250 RPM  
**Horsepower:** 362HP

## DIMENSIONS & CAPACITIES

MODELS	33C	35K	36E
Overall Length (inches) <sup>4</sup>	34' 3"	36' 3"	36' 3"
Overall Height (with A/C)	12' 10"	12' 10"	12' 10"
Overall Width (maximum) <sup>5, 6</sup>	102"	102"	102"
Interior Height (maximum)	84"	84"	84"
Interior Width (maximum)	96"	96"	96"
Interior Storage (cu. ft.)	123	126	146
Exterior Storage (cu. ft.)	110	118	118
Fresh Water Holding Tank (gal)	85	85	85
Grey Water Holding Tank (gal)	58	58	58
Black Water Holding Tank (gal)	42	42	42
Appliance Propane Tank (gal) (WC) <sup>7</sup>	25	25	25
Water Heater Tank (gal)	10	10	10

## ADDENDUMS

- GVWR (Gross Vehicle Weight Rating) is the maximum permissible weight of this fully loaded motorhome. The GVWR is equal to or greater than the sum of the (UVW) unloaded vehicle weight plus the (OCCC) occupant cargo-carrying capacity.
- GAWR (Gross Axle Weight Rating) is the maximum permissible loaded weight a specific axle is designed to carry.
- GCWR (Gross Combined Weight Rating) is the value specified by the motorhome manufacturer as the maximum allowable loaded weight of this motorhome with its towed vehicle. Towing and braking capacities may be different. Refer to Fleetwood and chassis manufacturer's manuals for complete information.
- Length measured from front bumper to rear bumper (excludes accessories).
- Excludes safety equipment and awnings.
- Motorhomes feature a body width over 96" which will restrict your access to certain roads. Before purchasing, you should research any state and/or province road laws which may affect your usage.
- Tank manufacturer's listed water capacity (WC). Actual propane capacity is 80% of water listing as required by the safety code.

† The chassis manufacturer recommends the installation of a supplemental brake control system to activate the brakes on the vehicle or trailer you are towing. Hitch receiver ratings expressed are maximum for the hitch receiver installed and may require the purchase of additional equipment that is dependent on the weight of the towed load. Consult with hitch receiver manufacturer for further information.

†† Minimum Towable Load is the available weight, up to GCWR, when the coach is fully loaded to maximum GVWR. However, if the coach is loaded to something less than maximum GVWR, that extra available weight can be added to your Towable Load. For example, if your coach is loaded to 1000lbs less than maximum GVWR, your Towable Load increases accordingly.

\* UVW and OCCC are found on the label containing the federal certification tag in each RV.

**IMPORTANT—PLEASE READ:** Product information, photography and illustrations included in this publication were as accurate as possible at the time of printing. For further product information and changes, please visit our website at [www.fleetwoodrv.com](http://www.fleetwoodrv.com) or contact your local Fleetwood RV dealer. Prices, materials, design and specifications are subject to change without notice. All weights, fuel, liquid capacities and dimensions are approximate. Fleetwood RV has designed its recreational vehicles to provide a variety of uses for its customers. Each vehicle features optimal seating, sleeping, storage and fluid capacities. The user is responsible for selecting the proper combination of loads (i.e., occupants, equipment, fluids, cargo, etc.) to ensure that the vehicle's capacities are not exceeded.

## 2014 GRAPHICS AND DÉCOR



Caramel Kiss



Sultry Obsidian

Both inside and out, we offer a wide selection of colors, styles and finishes. From the moment you lay your eyes on a Fleetwood RV, the high-style graphics and décor collection welcome you with gracious beauty and contemporary design. We've paid attention to every detail. So wherever you are, you'll feel right at home.

	CARAMEL KISS	SULTRY OBSIDIAN		CABINETRY
SOFA			CINNABAR	
ACCENT				
BEDSPREAD				
COUNTERTOP			SPICE	
FLOORING				
CARPET				



# BOUNDER CLASSIC STANDARD FEATURES AND OPTIONS

## INTERIOR THROUGHOUT

- Dual 11.0/13.5 BTU Ducted Air Conditioners
- Soft-touch Padded Vinyl Ceiling
- Halogen Lighting
- 34,000 BTU Furnace
- 30,000/20,000 BTU Dual Furnaces (36R/36H)
- 6-Gallon Quick-Recovery Water Heater w/Direct Spark Ignition
- Battery Disconnect System
- PEX Plumbing System
- Deluxe Roller Bearing, Full-Extension Drawer Guides
- Wood Cabinet Doors w/Raised Panels at Upper Doors
- Hidden Cabinet Door Hinges
- On-Demand Water Pump w/Filter
- Systems Monitor Panel
- 120V/12V AC/DC Converter
- Central Electrical Panel w/Charger
- Energy Management System
- Water Heater Bypass
- Pleated Night Shades

*Optional*

- Sofa L-Transformer (34M)
- CSA Package (Canadian Specs)\*\*

## DRIVER CONVENIENCE

- 3-Point Seatbelts at Driver & Front Passenger Seats
- AM/FM Radio w/CD & Electronic Tuning
- Auxiliary Start Circuit
- Cruise Control
- Flexsteel® Driver Captain's Chair w/Reclining Back/Slide Controls
- Low Profile Engine Cover
- Power Heated Rear-View Mirrors
- Flexsteel Passenger Chair w/Reclining Back/Slide Controls & Footrest
- Intermittent Wiper Control
- Radio Switch Main/Auxiliary Power
- Tilt Steering Wheel
- 12V Power Jack
- Front Privacy Curtains

## GALLEY

- 9 cu. ft. Dometic® Refrigerator
- 3-Burner Range w/Oven
- Convection Microwave
- Fan-Tastic® Power Roof Vent
- Large Stainless-Steel Double Sink
- High-Rise Faucet
- Wood Drawer Construction
- Whole-Coach Water Filtration System
- Dream Dinette Table
- Full Mosaic Glass Tile Backsplash

## LIVING ROOM

- 32" LED HDTV Mid-Coach Location
- Video Control Box
- DVD Home Theater Sound System
- Vinyl Floor Covering in Lavy/Galley/Living Room
- Sofa Bed w/Air Mattress

## BEDROOM

- Exclusive Dream Easy Mattress
- Wardrobe w/Mirrored Doors
- Rear TV Receptacle
- Adjustable Reading Lights
- Optional*
- Bedroom LED TV
- Dual Bunk Monitors (34B/36H)
- King Bed (N/A 30T)
- Dual Wardrobes (34B)

## BATHROOM

- Porcelain Toilet
- Molded ABS Shower w/Surround
- Power Bath Vent
- Skylight in Shower
- Glass Shower Door
- Medicine Cabinet w/Adjustable Shelves
- Vanity Lights
- Toilet Tank San-T-Flush™ System

## SAFETY/CONVENIENCE (INTERIOR)

- 10 ABC Fire Extinguisher
- Carbon Monoxide Detector/Alarm
- Propane Detector/Alarm
- Smoke Detector/Alarm
- Interior Entry Grab Handle
- Multiple Seatbelt Locations

## EXTERIOR THROUGHOUT

- Full Body Paint
- 50 Amp Service
- 5.5 kW Onan® MicroQuiet Gas Generator
- Amber Porch Light
- Awning Rail/Drip Molding (Both Sides)
- Exterior Wash Unit
- Power/Heated Rear-View Mirrors
- Power Awning - Electric
- Dual-Battery Charge Control
- TV Antenna w/Signal Booster
- ABS Front/Rear Wheel Well Trims
- 4-Point Automatic Levelers
- Dual 6V Deep-Cycle 217 Amp Auxiliary Batteries
- Tinted Dual-Pane Windows

*Optional*

- Protective Front Mask
- Additional Fresh Water Storage (30T, 34B, 34M)
- Exterior Chrome Package
- Rear Ladder

## AUTOMOTIVE

- Halogen Headlights w/Polycarbonate Lens
- Rear Fuel Fill
- Trailer Hitch w/7-Pin Electrical Hook-Up†
- 5,000 lb. Towing Capacity†
- 19.5" Stainless-Steel Wheel Simulators
- New Wiper System w/Large Swept Area
- Large One-Piece Bonded-In Windshield

## SAFETY/CONVENIENCE (EXTERIOR)

- Entry Door w/Screen Door & Deadbolt Lock
- High-Mounted Taillights
- Exterior Lighted Entry Assist Handle
- One-Piece Swing-Down Engine Access Door
- Park Cable Receptacle
- Patio Receptacle
- Power Entry Step
- Automotive Safety Glass
- Daytime Running Lights
- Hydraulic 4-Wheel Disk Brakes w/4-Wheel ABS

## STORAGE

- Large Lighted Roto- Molded Polyethylene Compartments
- Side Swing, Insulated Aluminum Luggage Doors w/ Single Paddle Latch & Corrosion Resistant Steel Hinges
- Continuous One-Piece Compartment Bulb Seal
- Gas Strut Supports
- Hidden, Stainless Latch Rods

## BODY STRUCTURE

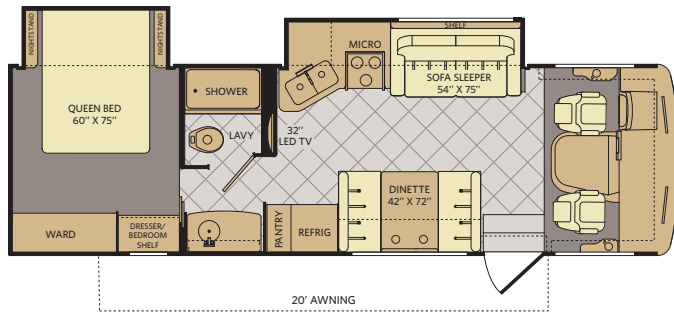
- Aluminum Interlocking Floor/Wall/Ceiling Framing
- Vacu-Bond® Floor and Ceiling
- Vacu-Bond® Walls w/Smooth High-Gloss Exterior Fiberglass
- Fiberglass Front/Rear Cap
- Radius Roof w/Ducted A/C
- Basement Floor Configuration
- Pass-Through Storage



†Not all options are available on all floor plans. See your Fleetwood dealer for details.  
 \*\*CSA standards may require substitution or deletion to achieve conformance.

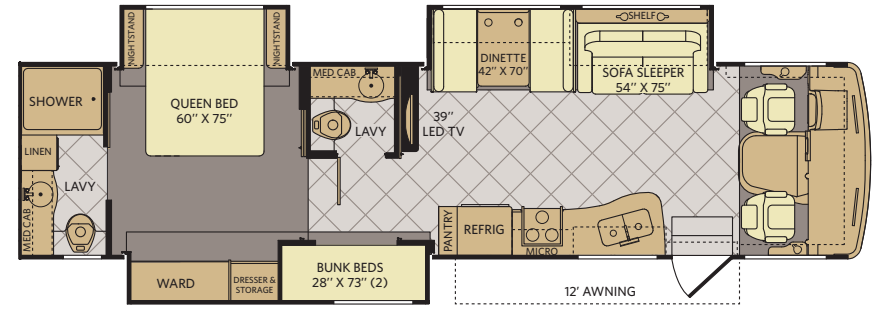
# BOUNDER CLASSIC FLOOR PLANS

30T



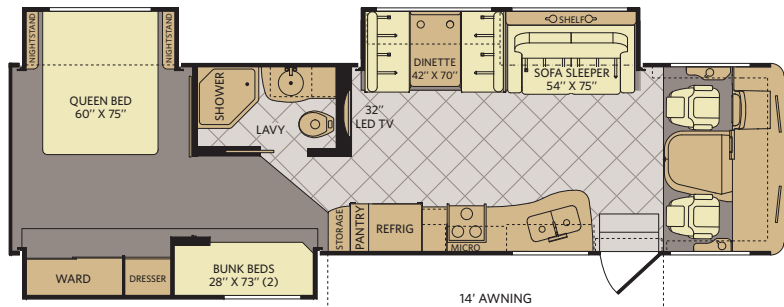
Available options: 084

36H



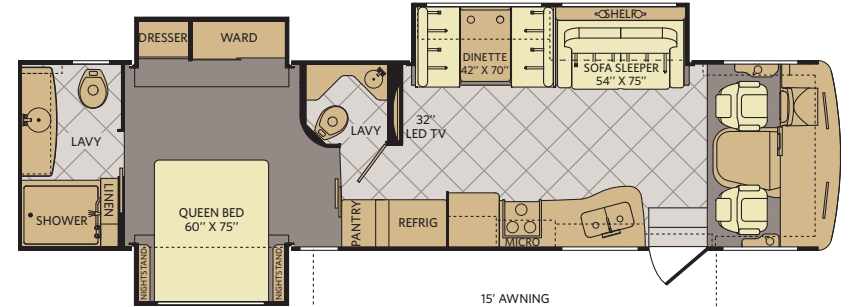
Available options: 084, 157, 852

34B



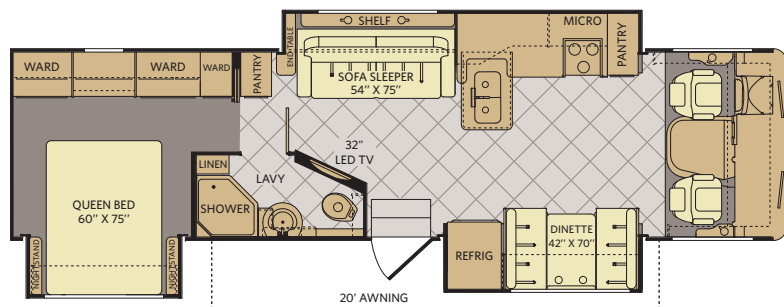
Available options: 084, 157, 852, 883

36R



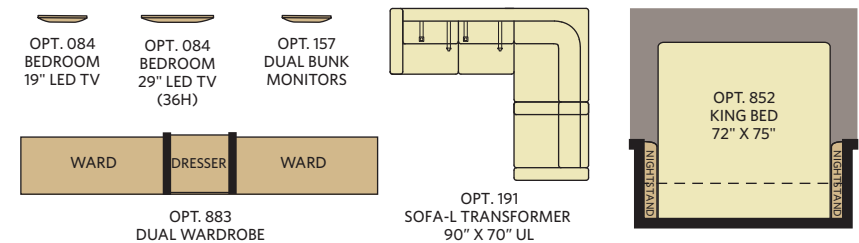
Available options: 084, 852

34M



Available options: 084, 191, 852

## FLOOR PLAN OPTIONS



# BOUNDER CLASSIC WEIGHTS & MEASUREMENTS

CHASSIS	FORD®				
MODELS	30T	34B	34M	36H	36R
Engine Displacement (liters)	6.8	6.8	6.8	6.8	6.8
Wheelbase (inches)	190"	228"	228"	228"	228"
GVWR (lbs) <sup>1</sup>	18,000	22,000	22,000	22,000	22,000
Front GAWR (lbs) <sup>2</sup>	7,000	8,000	8,000	8,000	8,000
Rear GAWR (lbs) <sup>2</sup>	12,000	15,000	15,000	15,000	15,000
GCWR (lbs) <sup>3</sup>	23,000	26,000	26,000	26,000	26,000
Hitch Rating Weight (lbs) <sup>†, ††</sup>	5,000	5,000	5,000	5,000	5,000
Tongue Weight (lbs) <sup>†</sup>	500	500	500	500	500
Fuel Capacity (gal)	80	80	80	80	80

## FORD® CHASSIS

**Model:** Ford®

**Engine:** 6.8L Triton V10 Gas

**Torque:** 457 lb-ft @ 3,250 RPM

**Transmission:** Ford® 5-Speed, Automatic w/Overdrive

**Alternator:** 175 Amp

**Horsepower:** 362HP

## DIMENSIONS & CAPACITIES

MODELS	30T	34B	34M	36H	36R
Overall Length (inches) <sup>4</sup>	30' 7"	35' 7"	35' 7"	37' 7"	37' 7"
Overall Height (with A/C)	12'	12'	12'	12'	12'
Overall Width (maximum) <sup>5, 6</sup>	102"	102"	102"	102"	102"
Interior Height (maximum)	79"	79"	79"	79"	79"
Interior Width (maximum)	96"	96"	96"	96"	96"
Interior Storage (cu. ft.)	160	150	144	134	169
Exterior Storage (cu. ft.)	103	167	167	180	180
Fresh Water Holding Tank (gal)	50	50	50	85	85
Grey Water Holding Tank (gal)	40	40	40	40	40
Black Water Holding Tank (gal)	30	30	30	30	30
Appliance Propane Tank (gal) (WC) <sup>7</sup>	20	20	20	20	20
Water Heater Tank (gal)	6	6	6	6	6

## ADDENDUMS

- GVWR (Gross Vehicle Weight Rating) is the maximum permissible weight of this fully loaded motorhome. The GVWR is equal to or greater than the sum of the (UVW) unloaded vehicle weight plus the (OCCC) occupant cargo-carrying capacity.\*
- GAWR (Gross Axle Weight Rating) is the maximum permissible loaded weight a specific axle is designed to carry.
- GCWR (Gross Combined Weight Rating) is the value specified by the motorhome manufacturer as the maximum allowable loaded weight of this motorhome with its towed vehicle. Towing and braking capacities may be different. Refer to Fleetwood and chassis manufacturer's manuals for complete information.
- Length measured from front bumper to rear bumper (excludes accessories).
- Excludes safety equipment and awnings.
- Motorhomes feature a body width over 96" which will restrict your access to certain roads. Before purchasing, you should research any state and/or province road laws which may affect your usage.
- Tank manufacturer's listed water capacity (WC). Actual propane capacity is 80% of water listing as required by the safety code.

† The chassis manufacturer recommends the installation of a supplemental brake control system to activate the brakes on the vehicle or trailer you are towing. Hitch receiver ratings expressed are maximum for the hitch receiver installed and may require the purchase of additional equipment that is dependent on the weight of the towed load. Consult with hitch receiver manufacturer for further information.

†† Minimum Towable Load is the available weight, up to GCWR, when the coach is fully loaded to maximum GVWR. However, if the coach is loaded to something less than maximum GVWR, that extra available weight can be added to your Towable Load. For example, if your coach is loaded to 1000lbs less than maximum GVWR, your Towable Load increases accordingly.

\* UVW and OCCC are found on the label containing the federal certification tag in each RV.

**IMPORTANT—PLEASE READ:** Product information, photography and illustrations included in this publication were as accurate as possible at the time of printing. For further product information and changes, please visit our website at [www.fleetwoodrv.com](http://www.fleetwoodrv.com) or contact your local Fleetwood RV dealer. Prices, materials, design and specifications are subject to change without notice. All weights, fuel, liquid capacities and dimensions are approximate. Fleetwood RV has designed its recreational vehicles to provide a variety of uses for its customers. Each vehicle features optimal seating, sleeping, storage and fluid capacities. The user is responsible for selecting the proper combination of loads (i.e., occupants, equipment, fluids, cargo, etc.) to ensure that the vehicle's capacities are not exceeded.





## WHY FLEETWOOD RV?



### Quality

There's no cutting corners. Skilled craftsmen build every Fleetwood RV for maximum durability and longevity.



### Trust

More people trust Fleetwood RV. After all, we've spent over 60 years perfecting RVs, earning the loyalty of generations of RVers.



### Passion

We're truly passionate about the RV lifestyle. Fleetwood RV was founded by RV enthusiasts, and that tradition continues today.



### Safety

You've got precious cargo. So we've engineered dozens of innovative safety features into our motor homes to give you more peace of mind.



### Service

Help is nearby with 24/7 emergency Fleetwood RV Trusted Roadside Assistance\*. And when you need an upgrade or repair, you'll find Fleetwood RV dealers all across North America ready to assist you.



### Warranty

Exclusive RV OwnerCare warranty. See your Fleetwood RV dealer for details.

\* All 2014 Fleetwood RV motorhomes include a 1-year emergency roadside assistance membership. For complete info, see your Fleetwood RV dealer.

\*\*For complete info, see your Fleetwood RV dealer.



Visit [FleetwoodRV.com](http://FleetwoodRV.com) or find FleetwoodRV Tablet apps in the App Store or Google Play.

### RV OWNERCARE\*\*

Limited one-year/15,000-mile coach warranty and three-year/45,000-mile structural warranty, whichever occurs first, and it is fully transferable for the first 12 months. RV OWNERCARE is one of the RV industry's most comprehensive programs and includes systems, appliances, components and construction, with no deductible and no service charge. RV OWNERCARE coverage is provided by a company that will be around in the future to service your needs. See your nearest Fleetwood RV dealer for a full explanation of benefits and restrictions.

### CONTACT US

To locate a dealer near you, visit our website at [www.fleetwoodrv.com](http://www.fleetwoodrv.com) or call 1-800-322-8216. We can also be contacted at Fleetwood RV Customer Relations, P.O. Box 1007, Decatur, IN 46733.

### FLEETWOOD MOTORHOME ASSOCIATION

As a Fleetwood RV owner, you're invited to become a member of the Fleetwood Motor Home Association (FMA). Becoming a member is the perfect way to meet other Fleetwood owners who love to travel across American and share in the RV lifestyle. Visit the FMA website at [www.fma4fun.org](http://www.fma4fun.org) to learn more and join the fun.



ALLIED SPECIALTY VEHICLES

FLEETWOOD RV IS AN  
ALLIED SPECIALTY VEHICLE COMPANY.

### YOUR LOCAL FLEETWOOD RV DEALER IS:

©2013. Fleetwood RV, Inc.  
Printed in the USA. Inventory Control Number BBC14B1, 07/13.  
Model Year 2014, First Edition.