

EXPLORER



WEEKEND PLANS!





**Designed with your family in mind.**

And what a way to camp! Actually, Coleman is home. Everything about our living spaces is inviting and comfortable. Our kitchens are open, enjoyable places to congregate, and our seating accommodations are a source of serenity and relaxation.



**OUTERBANKS  
DECOR**



296BH, IN ASHLAND



CTE236, IN CANYON



297RE, IN OUTERBANKS



296BH

Coleman offers a floorplan to suit every family, large or small. Kitchens include a 6-cubic foot refrigerator, range with standard oven, microwave, and double bowl sink with high-rise faucet. Most models include a residential-styled convertible jackknife sofa. Most bedrooms include a residential upgraded mattress, laundry chute, two hanging closets, nightstands on both sides, and a deep overhead storage cabinet.



236E, CANYON DECOR



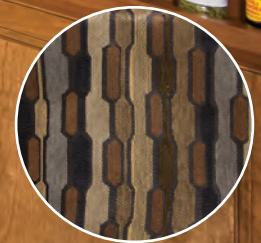
297RE

Coleman kitchens boast distinctive, creative layouts, and all offer fantastic amounts of storage space. Cabinets include hardwood doors and drawer fronts with full-extension drawer guides. The galley skylight adds calming natural light, and every Coleman offers flexible kitchen designs.



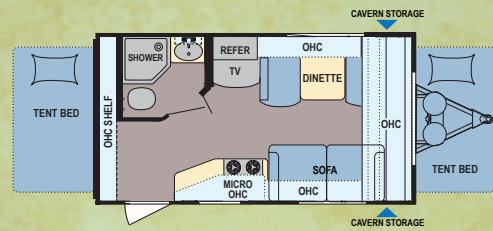
**You'll feel right at home.**

Your family will naturally congregate around Coleman's food preparation areas. Optional solid surface kitchen countertops dramatically highlight the attention to detail our interior designers bring to every floorplan. You'll appreciate the residential touches we've included, such as pendant lighting fixtures, window casements, roomy dinettes with under-seat storage that convert to double bed sleeping areas, and a variety of entertainment centers.

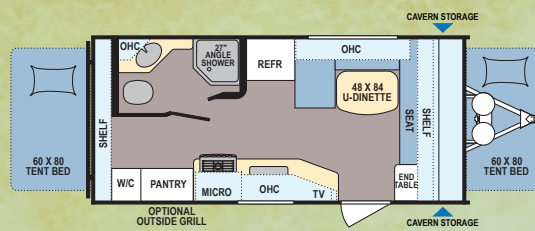


**ASHLAND  
DECOR**

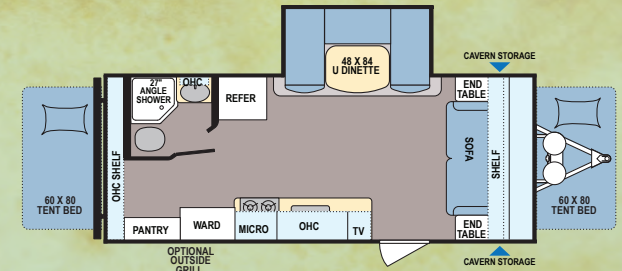
**296BH**



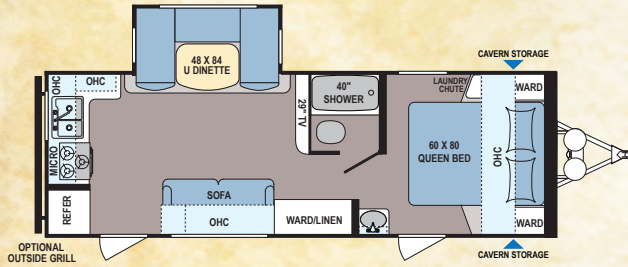
**CTE 171E**



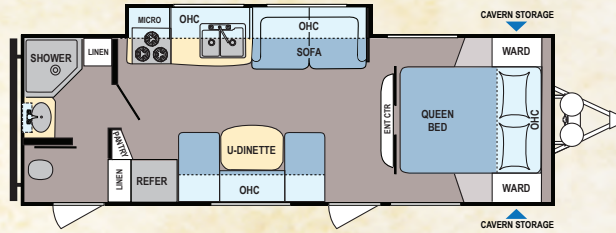
**CTE 211E**



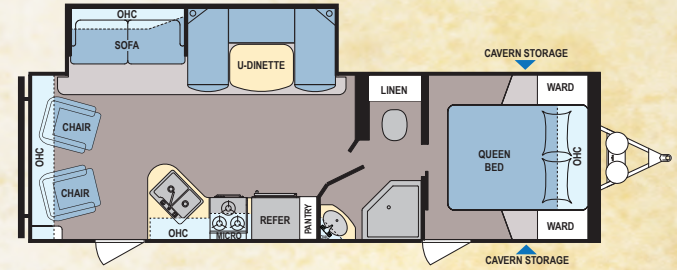
**CTE 236E**



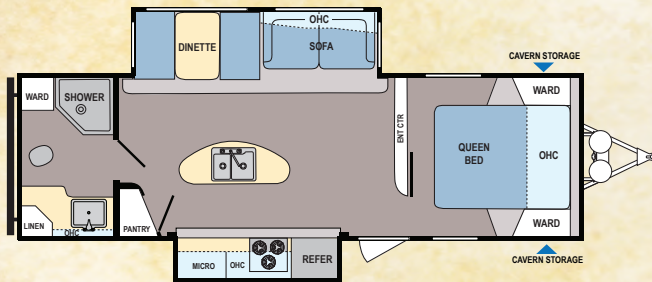
**CTU 247RK**



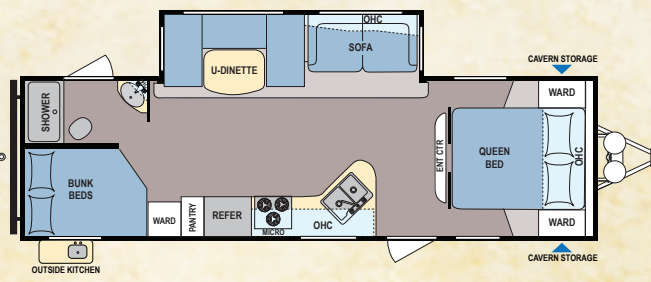
**CTU 249RB**



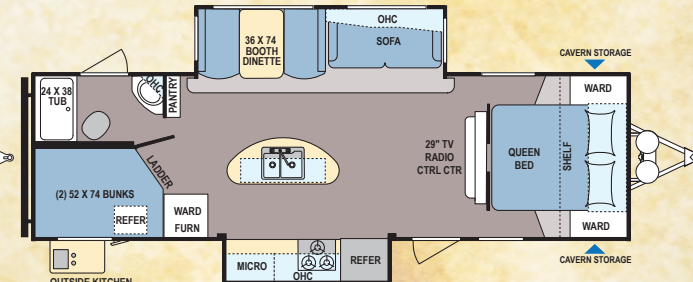
**CTU 260RL**



**CTU 271RB**

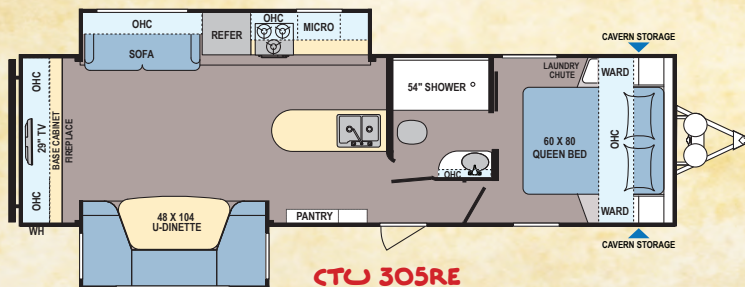


**CTU 281BH**

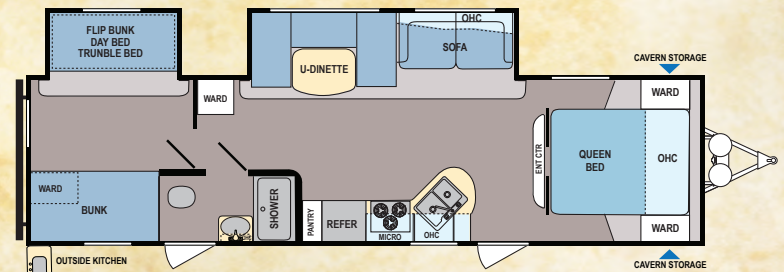


**CTU 296BH**

Tow Vehicle Disclaimer CAUTION: Owners of Dutchmen Manufacturing, Inc., recreational vehicles are solely responsible for the selection and proper use of tow vehicles. All customers should consult with a motor vehicle manufacturer or their dealer concerning the purchase and use of suitable tow vehicles for Dutchmen products. Dutchmen disclaims any liability or damages suffered as a result of the selection, operation, use or misuse of a tow vehicle. Dutchmen's limited warranty does not cover damage to the recreational vehicle or the tow vehicle as a result of the selection, operation, use or misuse of the tow vehicle.

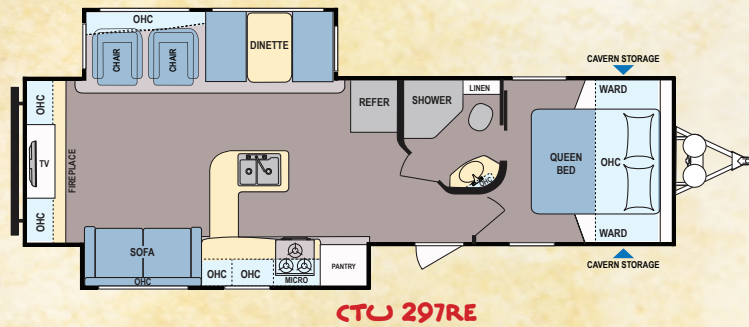
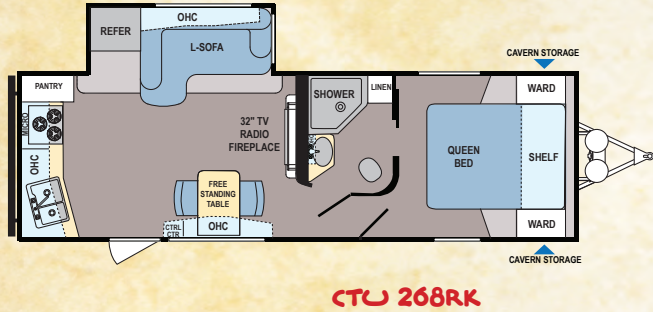
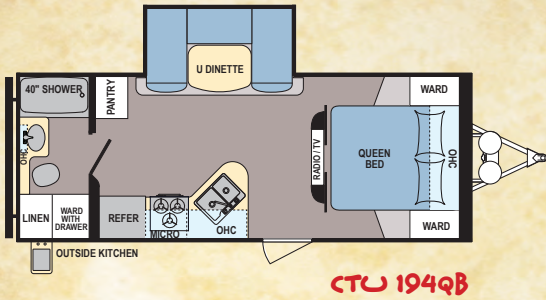


**CTU 305RE**



**CTU 313BH**

Disclaimer: Features, floorplans and specifications are subject to change without notice. Our weights represent how most units are built, inclusive of many commonly-ordered options.



## SPECIFICATIONS

	CTE 171E	CTE 211E	CTE 236E	CTU 194QB	CTU 247RK	CTU 249RB	CTU 260RL	CTU 268RK	CTU 271RB	CTU 281BH	CTU 296BH	CTU 297RE	CTU 305RE	CTU 313BH
UNLOADED WEIGHT	3,232	3,748	4,774	4,812	TBD	5,043	5,965	5,622	6,173	6,228	TBD	7,007	TBD	7,268
HITCH WEIGHT	323	375	621	577	TBD	605	656	506	802	685	TBD	631	TBD	1,018
CARGO CAPACITY	618	2,852	1,826	1,788	TBD	1,557	1,635	1,978	1,427	1,372	TBD	2,673	TBD	1,832
OVERALL HEIGHT	9' 11"	10' 1"	10' 7"	10' 9"	TBD	10' 1"	10' 9"	10' 10"	10' 10"	10' 7"	10' 7"	11' 1"	TBD	11'
OVERALL LENGTH	18' 7"	21' 7"	24' 6"	25' 7"	TBD	28' 11"	30' 1"	30' 8"	31' 4"	32' 5"	32' 5"	34' 9"	TBD	36' 1"
FRESH WATER CAPACITY	60	60	60	60	TBD	60	60	60	52	60	60	60	TBD	60
BLACK WATER CAPACITY	28	28	28	28	TBD	28	28	28	28	28	28	28	TBD	28
GREY WATER CAPACITY	67	39	39	39	TBD	39	39	67	56	67	56	78	TBD	39

# EXPLORER STANDARDS AND OPTIONS

## Exterior

120V Exterior Outlet
30 AMP Power Cord
Black Tank Flush
Backers for Rear Ladder (N/A 171, 211, 236)
Diamond Plate
EZ Lube Axles
Steel Wheels (Silver)
28" Entrance Door(s)
Entry Handle
Folding Entry Step (Double/Triple, Floorplan Specific)
Front/Rear Stabilizer Jacks
Cavern Baggage Compartment with Slam Latches (N/A 171, 211, 236)
LP Quick Connect
Porch Light with Interior Switch
Outside Speakers
Awning
Radial Tires
Black Fenderskirts
Enclosed Heated Holding Tanks (N/A 171, 211, 236)
Tinted Frameless Safety Glass Windows
Coleman Quad Chairs (2) (N/A 171, 211, 236)

## Interior

Black Refer Insert
Sink Cover
Laminated Kitchen Countertop
Composite Kitchen Sink
Range Backsplash (N/A 171, 211, 236)
High-Rise Kitchen Faucet
Kitchen Wall Accent
Abs Tub/Shower Surround
Shower Curtain with Curved Rod (Floorplan Specific)
Glass Shower Door (Floorplan Specific)
Foot Pedal Flush Toilet
Medicine Cabinet with Mirror
Skylight In Bathroom

Bedroom TV Hookup with DVD Connection (N/A 171, 211, 236)
Fire Extinguisher/LP/Carbon Monoxide/Smoke Detectors
Full-Extension Ball Bearing Drawer Guides Throughout
Interior Control Center
Coat Hooks (2)
Shoe Storage Space (194QB, 249RB, 281BH, 296BH, 313BH)
Pleated Nightshades Throughout
Everwear Luxury Furniture
Upgraded Rest Easy Mattress (Evergreen) (N/A 171, 211, 236)
Swivel Rockers (260RL, 297RE)
Residential Flooring
Laundry Chute (N/A 171, 211, 236)
Upgraded Window Coverings
Window Casements (Living Area Slideouts) (N/A 171, 211)
Skylight in Living Area
Wall Sconce Light in Slideout (N/A 171, 211, 236, 194QB, 249RB)
12V Decorative Dinette Ceiling Light & Panel (N/A 171, 211, 236)
Decorative Kitchen Ceiling Accent Panel with Pendant Light (271RB, 296BH, 297RE, 305RE)
Decorative Kitchen Ceiling Accent Panel with Flush Light (N/A 171, 211, 236, 271RB, 297RE, 305RE)

## Appliances

Solid-State Converter with Built-In Battery Charger
Cable/Satellite TV Hookup
13,500 BTU Roof A/C (171, 211, 236)
13,500 BTU Ducted Roof A/C (N/A 171, 211, 236)
Fireplace (296BH, 297RE, 305BH)
20 LB LP Bottle(s) with Black ABS Cover
6 Gal LP/Electric DSI Water Heater
6 CU FT Double-Door Refrigerator
3-Burner Cooktop with Piezo Ignition
Oven
Range Hood with 12V Light & Exhaust Fan

Microwave
Power Bathroom Vent
Stereo AM/FM CD/DVD/Bluetooth/MP3/AUX/Remote
(4) Interior Speakers (2 On 171, 211, 236)
Water Heater Bypass Kit

## Options

15,000 BTU A/C IPO 13,500 BTU A/C (N/A 171, 211, 236, 194QB)
HD LED TV (N/A 171, 211, 236)
30 LB LP Bottle(s) with ABS Cover (N/A 171, 211, 236)
Aluminum Wheels
Spare Tire (Silver Steel Wheel) (Mandatory Option)
Power Awning
Roof Ladder (N/A 171, 211, 236)
Power Tongue Jack
Power Stabilizer Jacks (N/A 171, 211, 236)
Outside Shower (Mandatory Option)
Large Entry Handle (Mandatory Option)
Solid Surface Kitchen Countertop with Stonecast Sink
Free-Standing Dinette with 4 Chairs (260R), 271RB, 297RE)
Tri-Fold Hide-A-Bed Sofa (N/A 171, 211, 236, 194QB, 249RB)
Tri-Fold Sofa IPO Swivel Rockers (297RE Only)
Coleman Outside Grill/Stove with Griddle (STD On 194QB, 281BH, 296BH, 313BH)

## Summit Package Option (N/A 171, 211, 236)

Upgraded Insulation

## Coleman Base Camp Package Option

Coleman 4-In-1 Camp Table (1)
Coleman Sleeping Bags (2)
Coleman Lantern (1)
Coleman 24-Can Stackers Cooler (2)



Since 1900, the Coleman® Company, Inc. has led the world in the manufacture of camping gear and outdoor equipment. From the renowned Coleman lantern to stoves, tents, sleeping bags and coolers, Coleman's reputation for high-quality camping products is legendary.

Whether your outdoor activities involve hiking, camping, fishing, hunting, boating, swimming, tailgating or simply relaxing, Coleman offers everything you need to satisfy your family's dreams.



Coleman's floorplans are not only loaded with innovative features and value, they're designed to help your family get the most out of every camping experience. After all, Coleman is Camping!

We invite you to visit your nearest Coleman RV dealer today, and find out for yourself why Coleman is the most respected name in outdoor recreation.

YOUR LOCAL DEALER



www.Dutchmen.com

Manufactured under license by:  
Dutchmen Manufacturing, Inc.  
PO Box 2164 • 2164 Caragana Court  
Goshen, Indiana 46527  
(574) 537-0600



Check us out on Facebook!

Scan our quick response code to open our website, and explore the many products we have to offer!

Disclaimer: Product information is as accurate as possible as of the date of publication of this brochure. Features, floorplans and specifications are subject to change without notice. Please also consult our website for more current product information and specifications. Coleman®, and are trademarks of The Coleman® Company, Inc., and are used under license.