

Unique - Innovative - Stylish



BAY HILL

by EVERGREEN



Luxurious, Best Value in its Class.



GOOD TIMES IN THE BAY HILL.

The Bay Hill fifth wheel reflects a high standard of elegance, style and luxury, but is still within the reach of your lifestyle. Bay Hill from EverGreen was created in response to requests from RV enthusiasts who wanted a luxury fifth wheel at an affordable price. EverGreen delivered! With a plethora of “must see” innovations and industry firsts, Bay Hill has all the standard features RVing enthusiasts demand.

Take a closer look, and discover why Bay Hill is way ahead of the pack in luxury, design and quality.





BUILT TO LAST FOR THE LONG HAUL.

Constructed with “the EverGreen difference,” Bay Hill is built from the ground up to give you years of trouble-free RVing.

CONSTRUCTION FEATURES



WALLS

1. Metallic fiberglass exterior
2. Fully welded aluminum frame
3. High-density, block foam insulation
4. Frameless windows
5. Slam latch baggage doors
6. Exterior speakers

ROOF

7. Walk on, crowned roof
8. 15K fully ducted A/C
9. Painted gel coat fiberglass cap

FLOOR

10. Six-point auto-leveling system
11. Steel I-beam frame
12. Fully welded aluminum frame
13. Tough, temperature resistant Beauflor linoleum



ALUMINUM FRAMING

Bay Hill is constructed with aluminum framed walls--around all doors, windows and baggage door openings. This adds strength and durability to the wall systems while eliminating flexing and potential leaks.



EVERGREEN'S VACUUM LAMINATION PROCESS

Bay Hill is built with vacuum laminated walls, and floor. Dense, block foam insulation is coated with a urethane adhesive which becomes super bonded under the heat and high pressure of EverGreen's vacuum lamination process. This results in a stronger, yet lighter and more durable coach that's better insulated for all seasons.



LEVEL UP™ AUTOMATIC LEVELING SYSTEM

A standard feature on Bay Hill, the Level Up™ six-point automatic leveling system levels the coach in less than a minute, using a one-touch auto-leveling feature. Level Up™ comes with an auto re-hitch memory function that remembers the exact height at which the coach was unhitched. Since Level Up™ has six points of contact on the ground, your coach remains more stable throughout your camping experience.

*Some construction materials are subject to market availability and may change without notice.



BAY HILL

by EVERGREEN

The fireplace with heater adds a luxurious – and practical -- touch.

The 80-inch queen-sized bed has convenient bullet reading lights above and night stands with power outlets. A TV jack and LCD TV bracket are provided. Note the spa-inspired wardrobe doors.



LAVISHLY APPOINTED, BEST IN CLASS.

Everything about Bay Hill is designed to fulfill your desire for an extra measure of comfort and luxury. Bay Hill interiors provide the perfect place to entertain. Double slide-outs and higher arched ceilings provide lots of room to relax, enjoy and live in this home away from home.

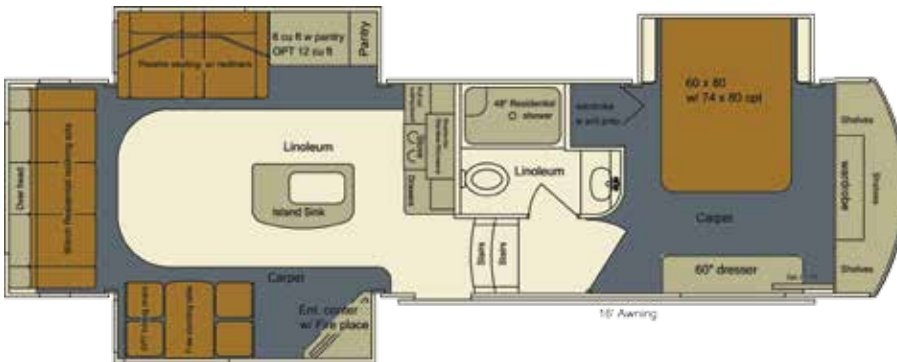
With the double door refrigerator/freezer, microwave and three-burner range with oven—all stainless steel—you're ready to prepare meals for family and friends.

The large stainless steel sink with gooseneck faucet and Corian™ countertops add convenience and eye-catching appeal.



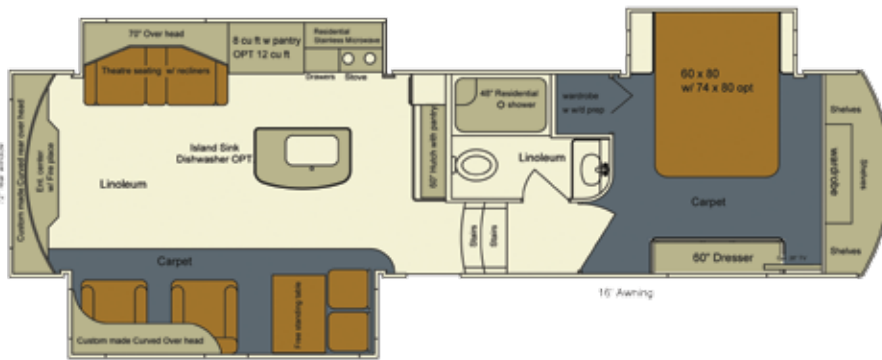
Spacious pantry in the 340RK has lots of space for your favorite foods.

Furniture Features Carpet Linoleum



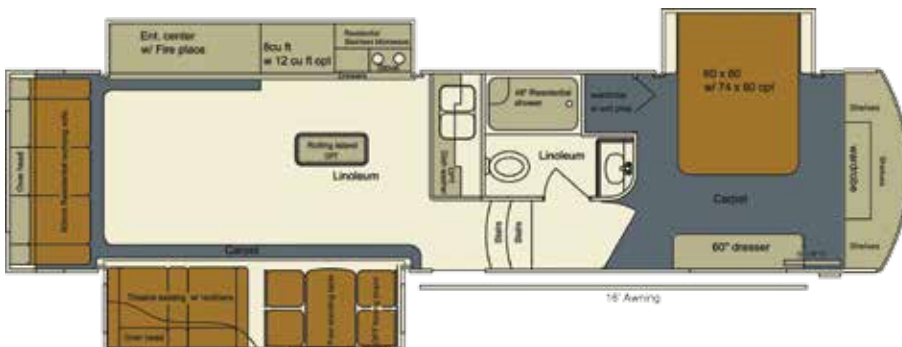
MODEL 295RL

Total Dry Weight (UVW)	10,646
Dry Hitch Weight (LBS)	2,019
GVWR (LBS)	13,900
Fresh Water Capacity (GAL)	70
Gray Water Tank Capacity (GAL)	80
Black Water Tank Capacity (GAL)	40
LP Capacity (LBS)	60
Cargo Carrying Capacity (LBS)	2,236
Overall Length	34' 6"
Height (including A/C)	13' 1"
Width	100
Bed Size	60x80
Power Awning Length	16'
Tire Size	ST235/80R16



MODEL 310RE

Total Dry Weight (UVW)	10,800
Dry Hitch Weight (LBS)	2,100
GVWR (LBS)	14,100
Fresh Water Capacity (GAL)	80
Gray Water Tank Capacity (GAL)	70
Black Water Tank Capacity (GAL)	40
LP Capacity (LBS)	60
Cargo Carrying Capacity (LBS)	2,636
Overall Length	35'
Height (including A/C)	13' 1"
Width	100"
Bed Size	60x80
Power Awning Length	16'
Tire Size	ST235/80/R16



MODEL 320RS

Total Dry Weight (UVW)	10,250
Dry Hitch Weight (LBS)	2,077
GVWR (LBS)	14,100
Fresh Water Capacity (GAL)	70
Gray Water Tank Capacity (GAL)	80
Black Water Tank Capacity (GAL)	40
LP Capacity (LBS)	60
Cargo Carrying Capacity (LBS)	3,355
Overall Length	36' 8"
Height (including A/C)	13' 1"
Width	100
Bed Size	60x80
Power Awning Length	16"
Tire Size	ST235/80R16

*Estimated weights. Specifications subject to change.

Furniture Features
 Carpet
 Linoleum

MODEL 340RK

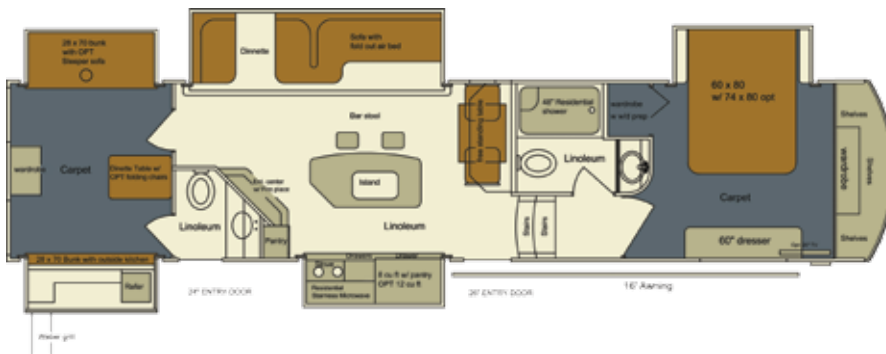
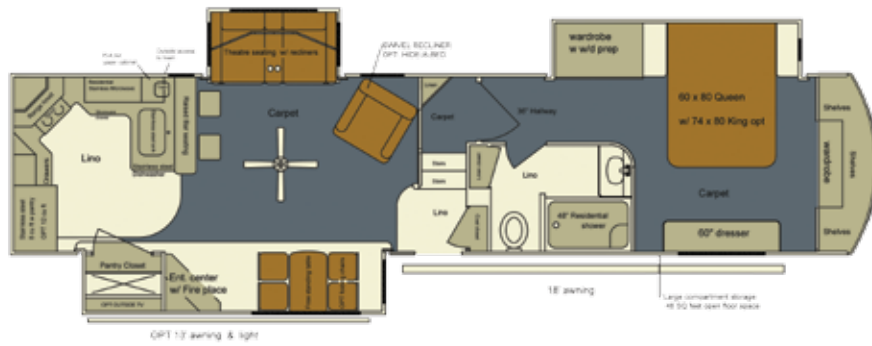
Total Dry Weight (UVW)	12,110
Dry Hitch Weight (LBS)	2,085
GVWR (LBS)	16,100
Fresh Water Capacity (GAL)	70
Gray Water Tank Capacity (GAL)	80
Black Water Tank Capacity (GAL)	40
LP Capacity (LBS)	60
Cargo Carrying Capacity (LBS)	3,276
Overall Length	39' 4"
Height (including A/C)	13' 1"
Width	100
Bed Size	60x80
Power Awning Length	TBD
Tire Size	ST235/80R16

MODEL 365RL

Total Dry Weight (UVW)	11,076
Dry Hitch Weight (LBS)	2,177
GVWR (LBS)	14,100
Fresh Water Capacity (GAL)	70
Gray Water Tank Capacity (GAL)	80
Black Water Tank Capacity (GAL)	40
LP Capacity (LBS)	60
Cargo Carrying Capacity (LBS)	2,138
Overall Length	41'
Height (including A/C)	39' 7"
Width	100
Bed Size	60x80
Power Awning Length	18'
Tire Size	ST235/80R16

MODEL 385BH

Total Dry Weight (UVW)	12,485
Dry Hitch Weight (LBS)	2,195
GVWR (LBS)	16,300
Fresh Water Capacity (GAL)	70
Gray Water Tank Capacity (GAL)	80
Black Water Tank Capacity (GAL)	40
LP Capacity (LBS)	60
Cargo Carrying Capacity (LBS)	2,196
Overall Length	41'
Height (including A/C)	13' 1"
Width	100
Bed Size	60x80
Power Awning Length	16'
Tire Size	ST235/80R16



*Estimated weights. Specifications subject to change.



BAY HILL

by EVERGREEN

Standard Features

Exterior

- Metallic fiberglass exterior
- Painted gel coat fiberglass front cap
- Exclusive Bay Hill graphics package
- Bright, automotive-grade aluminum wheels
- LED front cap docking lights improve visibility
- Slam latch baggage doors
- Monster-sized pass-through storage
- Frameless deep-tinted windows
- Exterior speakers
- Electric awning for easy setup
- Six-point auto level-up system makes leveling a breeze (4-point on the 295RL)

Interior

- Screwed and glued cabinetry with solid wood doors
- Ceiling crown moldings
- LED ceiling lighting package
- Big-screen LED living room television
- Fireplace with heater
- Designer glass
- Comfortable innerspring residential-style furniture
- Hidden hinges for added décor style
- Leather furniture

Kitchen

- Power exhaust range hood with light
- Stainless steel double-door refrigerator/freezer
- Stainless three-burner range with oven
- Stainless steel microwave oven
- Corian™ countertops
- Large stainless steel sink
- No-slam kitchen drawer guides
- Wave overhead cabinets with Wave doors

Bedroom

- 80-inch queen-sized bed
- Bullet reading lights above bed
- TV jack and LCD TV bracket
- Night stands with power outlets
- Spa-inspired wardrobe doors

Bathroom

- Large walk-in shower with glass shower door
- Skylight over shower/tub
- Large medicine cabinet with mirror
- Recessed vanity light
- Hand sprayer in tub
- Power exhaust fan

Utilities

- Satellite/cable hookups
- High-capacity ducted furnace
- CO, LP, smoke detectors
- Fire extinguisher
- Digital tank monitors
- One-touch systems monitor panel
- Marine-style detachable power cord with LED light
- LP harness and machine-crimped fittings
- 15,000 BTU ducted A/C
- Three 20 lb. LP tanks with sliding tray
- 50 amp service
- Black tank flush
- Washer and dryer prep
- AM/FM/CD/DVD with Bluetooth capability

Options

- Stainless steel dishwasher
- 12 cubic foot refrigerator
- Dual-pane windows
- Second 13,500 BTU ducted low-profile A/C
- Trail Air hitch
- Hitch cover
- Slide awnings
- Booth dinette
- Vacuum
- King bed
- Bedroom TV
- Rolling galley island
- Generator ready
- Tankless water heater
- Dual folding chairs

"Peace of Mind" Warranty

We're so confident in our quality that we're willing to stand behind our travel trailers and fifth-wheels with one of the best warranties in the industry.

- 1-Year Limited Warranty
- 3-Year Limited Structural Warranty*
- 12-Year Roofing Materials Warranty (Except the Ascend)
- 1-Year Free Roadside Assistance Program

*Contact your EverGreen dealer for an applicable copy of all limited warranties

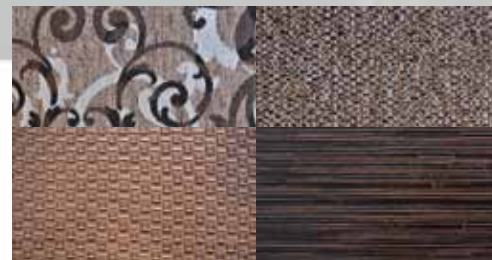
*Product and specifications subject to change without notice



Angela Black Decor



Abigale Grey Decor



Madison Brown Decor

Compliments of:



See Bay Hill On YouTube!



CSA Z240 Code Compliance and Certification



1st Green Certified RV Manufacturer