

Value - Innovation - Quality

# EVER-LITE

by EVERGREEN



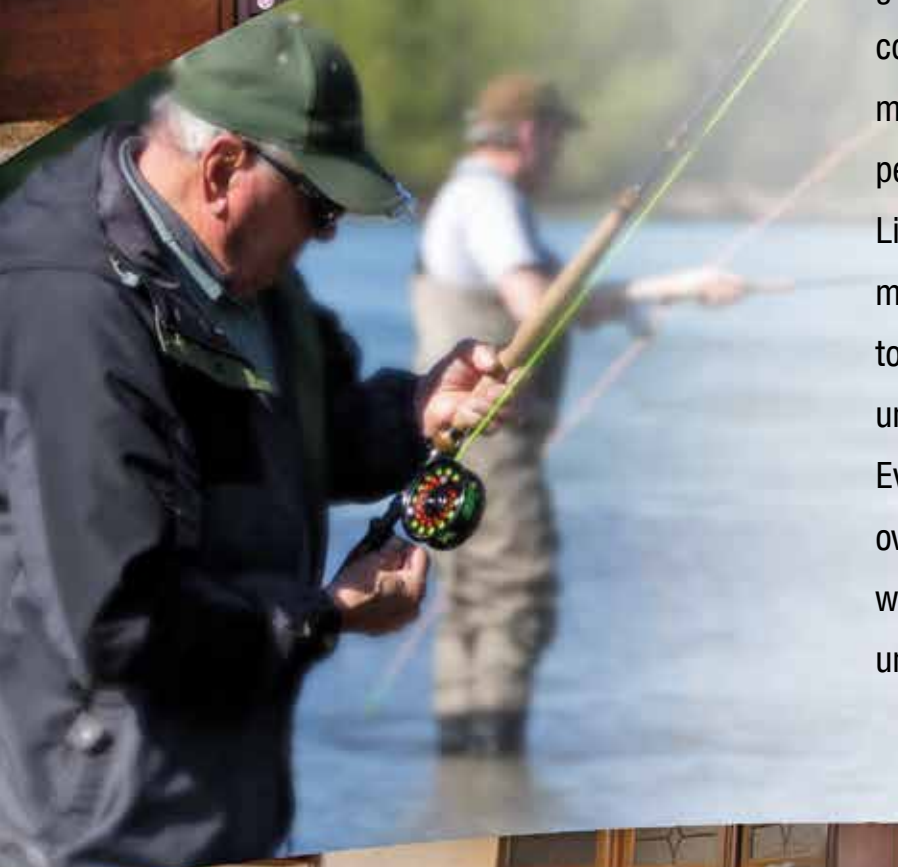
Composite Construction, Groundbreaking Design.



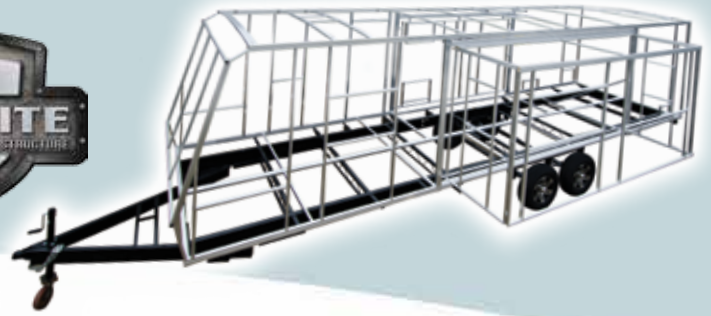


## FIRST ALL-COMPOSITE TRAVEL TRAILER.

Ever-Lite revolutionized the RV industry with its groundbreaking, all composite CompositTek™ construction that results in an ultra-lightweight, more durable trailer. Ever-Lite is as much as 20 percent lighter than comparable units. Yet, Ever-Lite composites materials are impervious to moisture, resulting in a structure that's resistant to rot, mold and mildew. Discriminating campers understand that the lightweight, easy-to-tow Ever-Lite is more durable and will hold its value over the long haul. With Ever-Lite's reduced weight, you can take it all with you, for an unrivaled camping experience.







## TOUGHER, MORE DURABLE, FOR A LIFETIME OF ENJOYMENT.

Built with "The EverGreen difference," Ever-Lite is constructed to last for the long haul.

### CONSTRUCTION FEATURES

#### WALLS

1. CompositTek™ inner liner
2. Fully welded aluminum frame
3. High-density, block foam insulation
4. CompositTek™ substrate standard
5. High-gloss CompositTek™ exterior

#### ROOF

6. CompositTek™ inner liner
7. Fully welded, crowned aluminum frame
8. High-density, block foam insulation
9. Plywood substrate
10. Reflective, white TPO roofing

#### FLOOR

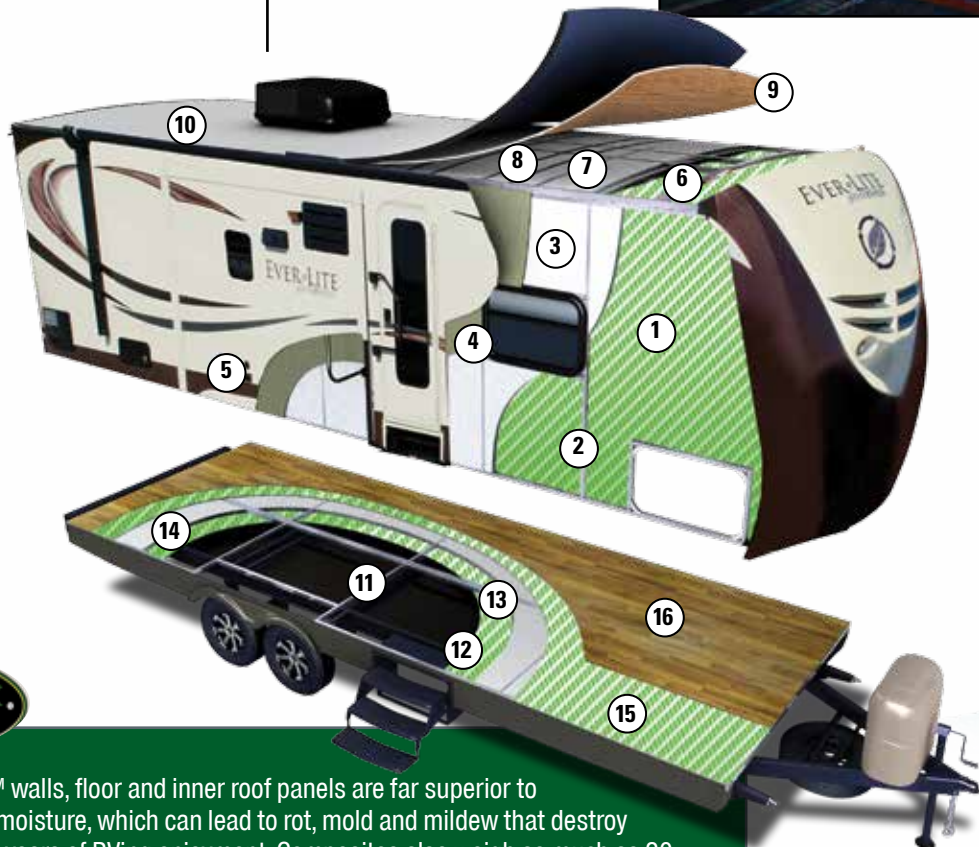
11. Steel I-beam frame
12. Seamless CompositTek™ substrate
13. Fully welded aluminum frame
14. High-density, block foam insulation
15. Seamless CompositTek™ substrate
16. Padded "No-Crack" vinyl floor

### DURALITE™ DOUBLE WELDED ALUMINUM STRUCTURE

Ever-Lite is built with the DuraLite™ Double Welded Aluminum Structure. It includes six-sided double-welded aluminum frame construction in the walls, roof and floors, with header framing around all doors, windows and baggage door openings. This strong, durable frame eliminates flexing and leaks. So it's superior to wood construction used in other travel trailers, which can rot when exposed to water.

### VACUUM LAMINATION

Like all EverGreen RVs, Ever-Lite is built with vacuum lamination in the walls, roof and floor. Dense, block foam insulation is coated with a urethane adhesive which becomes super bonded under the heat and high pressure of EverGreen's vacuum lamination process. This results in a stronger, yet lighter and more durable coach that's better insulated for all seasons.



### COMPOSITEK™

Four times the strength of plywood, CompositTek™ walls, floor and inner roof panels are far superior to competing materials. Composite materials resist moisture, which can lead to rot, mold and mildew that destroy other travel trailers. So your Ever-Lite will give you years of RVing enjoyment. Composites also weigh as much as 20 percent less, making the coach lighter and easier to tow. And because CompositTek™ replaces wood in construction of the Ever-Lite, there are less harmful VOCs such as formaldehyde.

# EVER-LITE

by EVERGREEN

With the double-door refrigerator/freezer, microwave, three-burner range with oven and folding range cover, you're ready to prepare meals for family and friends in your Ever-Lite.

Residential-style upholstered furniture and entertainment center with optional fireplace (most models) make this Ever-Lite a delightful retreat.



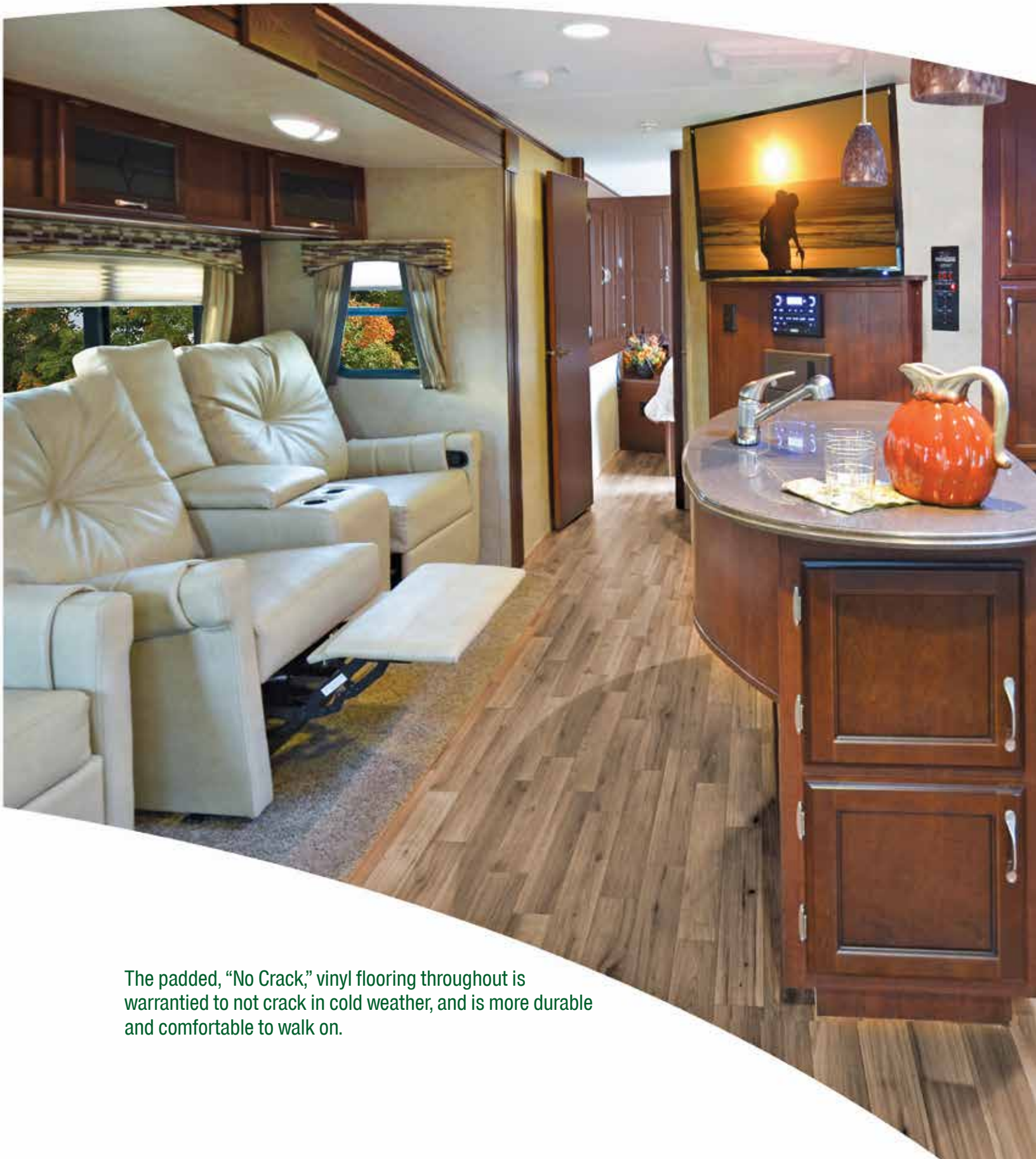
## GRACIOUS LIVING AND ENTERTAINING.

Feeling at home after a busy day of vacationing comes naturally in an Ever-Lite. Choose from three well-appointed interior fabrics, valances and interior accents. Deeper slide-outs and higher, crowned interior ceilings open up the room for a feel of home.

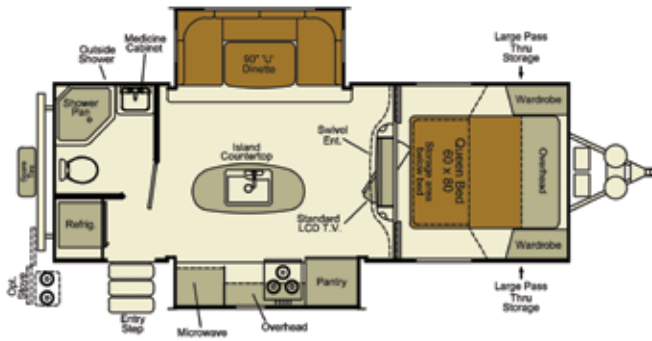


Ceiling crown moldings and raised panel interior passage doors are further evidence of Ever-Lite's meticulous appointments.

Complete with solid wood doors, the well-crafted cabinets are screwed and glued – never stapled. Drawers come with full-extension, strong ball bearing guides.

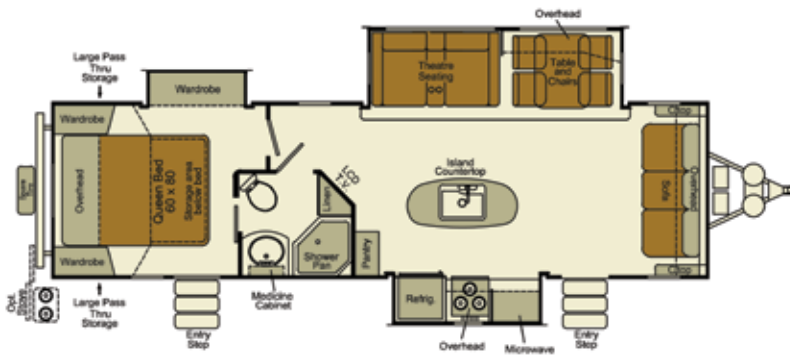


The padded, "No Crack," vinyl flooring throughout is warranted to not crack in cold weather, and is more durable and comfortable to walk on.



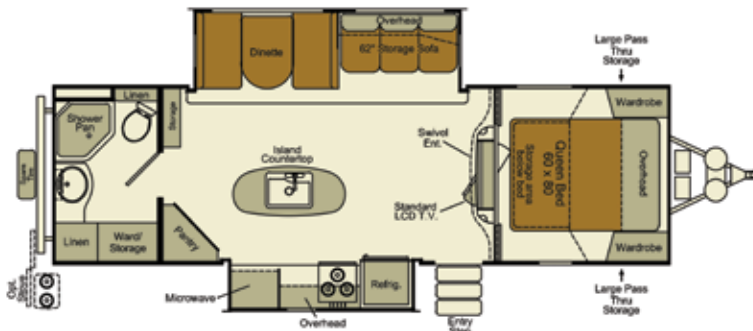
### MODEL 232RBS

Total Dry Weight (UVW)	5,845
Dry Hitch Weight (LBS)	400
GVWR (LBS)	8,195
Fresh Water Capacity (GAL)	56
Gray Water Tank Capacity (GAL)	58
Black Water Tank Capacity (GAL)	29
LP Capacity (LBS)	60
Cargo Carrying Capacity (LBS)	1,860
Overall Length	27'-6"
Height (including A/C)	10'-8"
Width	8'-1"
Bed Size	60" x 80"
Power Awning Length	18'
Tire Size	ST225/75R15-D



### MODEL 275FLS

Total Dry Weight (UVW)	7,125
Dry Hitch Weight (LBS)	1,100
GVWR (LBS)	8,995
Fresh Water Capacity (GAL)	56
Gray Water Tank Capacity (GAL)	58
Black Water Tank Capacity (GAL)	29
LP Capacity (LBS)	60
Cargo Carrying Capacity (LBS)	1,375
Overall Length	34'-8"
Height (including A/C)	10'-8"
Width	8'-1"
Bed Size	60" x 80"
Power Awning Length	18'
Tire Size	ST225/75R15-D



### MODEL 29KIS

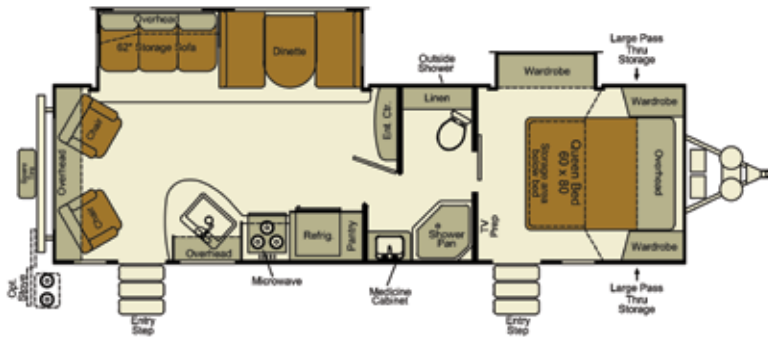
Total Dry Weight (UVW)	6,540
Dry Hitch Weight (LBS)	765
GVWR (LBS)	8,795
Fresh Water Capacity (GAL)	56
Gray Water Tank Capacity (GAL)	58
Black Water Tank Capacity (GAL)	29
LP Capacity (LBS)	60
Cargo Carrying Capacity (LBS)	1,445
Overall Length	32'-0"
Height (including A/C)	10'-8"
Width	8'-1"
Bed Size	60" x 80"
Power Awning Length	20'
Tire Size	ST225/75R15-D



### MODEL 30BHPR

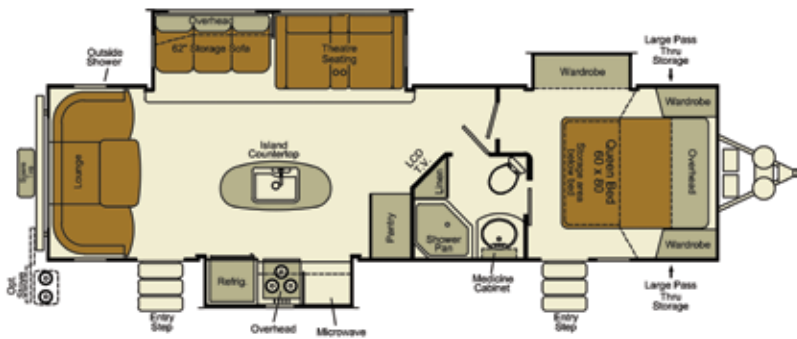
Total Dry Weight (UVW)	6,650
Dry Hitch Weight (LBS)	880
GVWR (LBS)	8,795
Fresh Water Capacity (GAL)	56
Gray Water Tank Capacity (GAL)	58
Black Water Tank Capacity (GAL)	29
LP Capacity (LBS)	60
Cargo Carrying Capacity (LBS)	1,445
Overall Length	34'-6"
Height (including A/C)	10'-8"
Width	8'-1"
Bed Size	60" x 80"
Power Awning Length	20'
Tire Size	ST225/75R15-D

\*Estimated weights. Specifications subject to change.



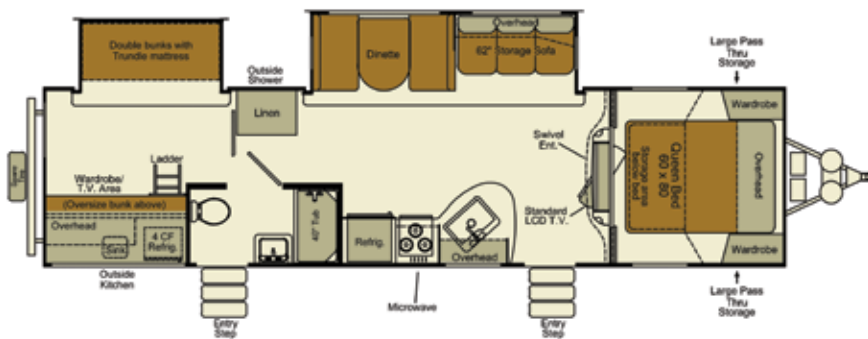
### MODEL 29RLW

Total Dry Weight (UVW)	6,620
Dry Hitch Weight (LBS)	680
GVWR (LBS)	8,795
Fresh Water Capacity (GAL)	56
Gray Water Tank Capacity (GAL)	58
Black Water Tank Capacity (GAL)	29
LP Capacity (LBS)	60
Cargo Carrying Capacity (LBS)	1,705
Overall Length	32'-8"
Height (including A/C)	10'-8"
Width	8'-1"
Bed Size	60" x 80"
Power Awning Length	20'
Tire Size	ST225/75R15-D



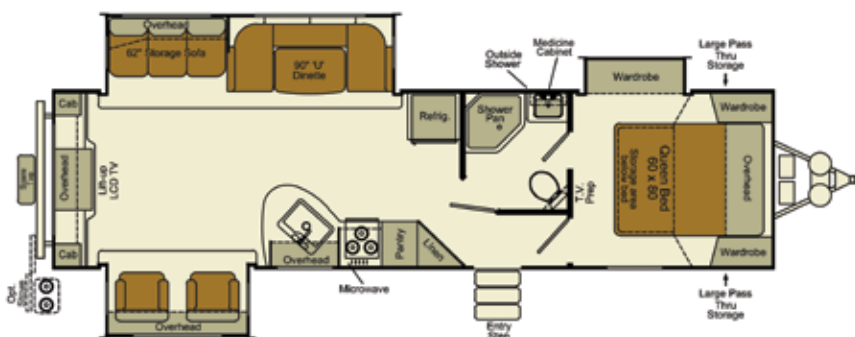
### MODEL 291RLS

Total Dry Weight (UVW)	7,440
Dry Hitch Weight (LBS)	1,050
GVWR (LBS)	8,995
Fresh Water Capacity (GAL)	56
Gray Water Tank Capacity (GAL)	58
Black Water Tank Capacity (GAL)	29
LP Capacity (LBS)	60
Cargo Carrying Capacity (LBS)	1,060
Overall Length	34'-9"
Height (including A/C)	10'-8"
Width	8'-1"
Bed Size	60" x 80"
Power Awning Length	18'
Tire Size	ST225/75R15-D



### MODEL 318BHS

Total Dry Weight (UVW)	TBD
Dry Hitch Weight (LBS)	TBD
GVWR (LBS)	TBD
Fresh Water Capacity (GAL)	56
Gray Water Tank Capacity (GAL)	29
Black Water Tank Capacity (GAL)	29
LP Capacity (LBS)	60
Cargo Carrying Capacity (LBS)	TBD
Overall Length	37'-6"
Height (including A/C)	10'-8"
Width	8'-1"
Bed Size	60" x 80"
Power Awning Length	16'
Tire Size	ST225/75R15-D



### MODEL 31REW

Total Dry Weight (UVW)	7,555
Dry Hitch Weight (LBS)	940
GVWR (LBS)	9,995
Fresh Water Capacity (GAL)	56
Gray Water Tank Capacity (GAL)	58
Black Water Tank Capacity (GAL)	29
LP Capacity (LBS)	60
Cargo Carrying Capacity (LBS)	1,975
Overall Length	36'-8"
Height (including A/C)	10'-8"
Width	8'-1"
Bed Size	60" x 80"
Power Awning Length	18'
Tire Size	ST225/75R15-D

\*Estimated weights. Specifications subject to change.



## Standard Features

### Exterior

- Crown roof with fully laminated, white TPO construction
- Vacuum laminated, welded aluminum sidewalls, roof and floors
- LED exterior lights improve visibility
- Automotive bronze high gloss gel coat exterior with composite substrate
- Diamond-plated steel rear bumper with sewer hose storage
- Door-side patio light
- Exterior speakers
- Front and rear stabilizer jacks (4)
- LCD TV bracket/hookup
- Finished and lighted pass-through storage compartments
- Gear-driven four-point slide system

### Interior

- Composite inner shell—floor, ceiling and walls
- 26-inch LCD TV with mounting bracket (some models)
- Skylight in living area
- LED interior lighting package
- Screwed and glued cabinetry/solid wood doors
- Ceiling crown moldings
- Raised panel interior passage doors
- Wall-mounted interior light switches
- Padded "No Crack" vinyl flooring throughout
- Residential-style upholstered furniture
- Residential-style entertainment center with optional fireplace (most models)

### Kitchen

- Power exhaust range hood with light
- Plywood drawers with full-extension ball bearing guides
- Double-door refrigerator/freezer
- Three-burner range w/oven
- Folding range cover
- Full-size composite sink w/cover
- Gooseneck spray faucet

- Venetian window blinds
- Microwave

### Bedroom

- 80-Inch innerspring fiber pillow top mattress
- Reading lights above bed
- Lift-up bed with gas struts and storage
- TV jack and LCD TV bracket

### Bathroom

- Skylight over shower/tub
- Large medicine cabinet/mirror
- Recessed vanity light
- Full tub/shower surround
- Hand sprayer in shower/tub
- Power exhaust fan

### Utilities

- Satellite/cable hookups
- High-capacity ducted furnace
- Water pump w/winterizing inlet
- LP quick disconnect (gas grill ready)
- CO, LP, smoke detectors
- Fire extinguisher
- Digital tank monitors
- 55-amp converter w/shore line
- Marine-style detachable power cord w/ LED light
- LP harness with machine-crimped fittings
- Door-side lower receptacle (110V)

### Options

- 15K BTU Air Conditioner
- 2nd 13.5 A/C (Requires 50Amp/Prep Opt)
- 50AMP Service w/2nd AC Prep
- 32" TV Upgrade (All Models)
- 74" Hide-A-Bed Sofa exch. For Trundle Bed (318BHS Only)
- E-Cube IPO Trundle Bed (318BHS Only)
- Hide-A-Bed
- Dual Pane Windows
- Fireplace w/Remote Control (N/A 29RLW)
- Free Standing Table & Chairs (Standard on 275FL)

- Power Tongue Jack
- Wall Hugger Recliners (No Swivel or Rock) (29RLW & 31REW Only)
- Tankless Water Heater
- Outside Grill
- 8 Cu. Ft. Refrigerator

### Ever-Lite™ Value Package (included)

- Fully enclosed, heated underbelly
- Six-side aluminum structure
- AM/FM/CD/DVD w/interior/exterior speakers
- (2) 30-lb. LP tanks w/hard shell cover
- Six-gallon gas/electric water heater with DSI
- Toilet with foot-flush pedal
- Outside shower
- Power awning
- Frameless automotive style windows
- Spare tire and carrier
- Black tank flush
- Swing out grab bar
- Pleated shades
- Solid surface Corian® countertops
- Fiberglass front cap with LED lights
- 13,500 BTU ducted A/C quick chill function
- Full view vented entry door w/ privacy shade
- Nitrogen-filled tires
- Aluminum wheels
- Barreled and ducted laminated ceiling
- TV/radio antenna

### "Peace of Mind" Warranty

We're so confident in our quality that we're willing to stand behind our travel trailers and fifth-wheels with one of the best warranties in the industry.

- 1-Year Limited Warranty
- 3-Year Limited Structural Warranty\*
- 12-Year Roofing Materials Warranty
- 1-Year Free Roadside Assistance Program

\*Contact your EverGreen dealer for an applicable copy of all limited warranties

\*Product and specifications subject to change without notice



Spice' Decor



Linen Decor



Graphite Decor

Compliments of:



See EverLite On YouTube!



CSA 2240 Code Compliance and Certification



1st Green Certified RV Manufacturer