

Economical - Lightweight - Durable

ASCEND

by EVERGREEN



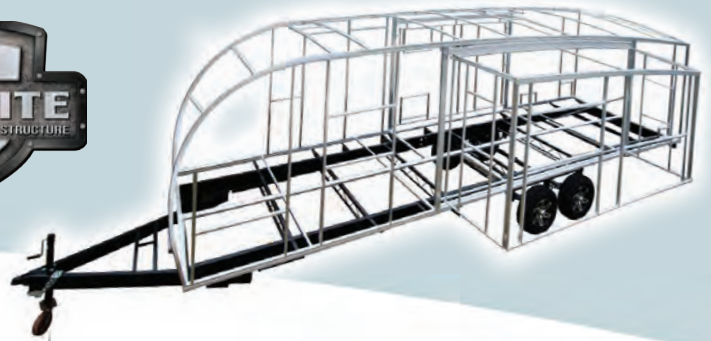
Begin Your Adventure.



STYLISH AND EASY TO TOW.

There's no better way to move up into RV ownership than with the Ascend travel trailer from EverGreen. Ascend is lightweight and streamlined. And at less than 5,000 pounds, it's easy to tow your new Ascend with the family sedan, minivan or small SUV. Its modern look and sense of style—including a high gloss gel coat exterior—meet your higher expectations. Ascend comes standard with all the equipment and accessories other lightweight campers leave behind. Best of all, Ascend is affordably priced, so it's well within the reach of small families or retirees on a fixed budget.





BUILT TOUGH, YET LIGHTWEIGHT, TO GET YOU THERE.

Ascend is constructed with “The EverGreen Difference” to give you years of trouble-free service.

Feature

Benefits

Waterproof composite underside of floor and inner side wall liner	Protects the RV and doesn't absorb water that can promote mold and mildew
Fresh water tank is placed over the axle	Reduces tongue weight and increases storage space
Dual gas struts for under-bed access	Easier to access under-bed storage and pass-through storage from interior of coach
Aluminum framed pass-through storage	Lightweight, durable and quality construction
Aluminum bed base	More durable than wood/stapled bed base
LP gas harness	Lightweight, engineered fittings won't rust
Innerspring mattress	Greater comfort than foam mattress
Three-year limited structural warranty	Longer than other brands
Large deep-tint, bonded frameless windows	Lets in more light and increases ventilation with a sleek automotive look
Four-point gear driven slide	Allows the slide-out to move in and out squarely with a tight seal all the way around
6 gallon gas/electric DSI water heater	Convenience of both gas and electric
Large double-door refrigerator/freezer	More space to store food
One Year Roadside Assistance	Greater peace of mind
Roof A/C is 13,500 BTUs w/15,000 BTU option	Versatility in keeping the RV cool
Vinyl padded enhanced flooring	Warrantied not to crack in the cold; more durable, comfortable to walk on
Adjustable axle hangers (some models)	Raise or lower the unit height to adjust to different terrains

DURALITE™ DOUBLE WELDED ALUMINUM STRUCTURE

Ascend is built with the DuraLite™ Double Welded Aluminum Structure. It includes six-sided double-welded aluminum frame construction in the walls, roof and floors, with header framing around all doors, windows and baggage door openings. This strong, durable frame eliminates flexing and leaks. So it's superior to wood construction used in other travel trailers, which can rot when exposed to moisture.

VACUUM LAMINATION

Like most EverGreen products, Ascend is built with vacuum lamination in the walls and floor. Dense, block foam insulation is coated with a urethane adhesive which becomes super bonded under the heat and high pressure of EverGreen's vacuum lamination process. This results in a stronger, yet lighter and more durable coach that's better insulated for all seasons.



ONE PIECE AERODYNAMIC FIBERGLASS ROOF & SPECIAL CONSTRUCTION FEATURES

Ascend has a one-piece, aerodynamic fiberglass roof that has no seams to maintain and allows the water to flow off the roof top without pooling. An attractive diamond plate stone guard protects the front. The fresh water tank is placed over the axle to reduce tongue weight and increase towing efficiency, while freeing up more storage space under the aluminum-framed bed.



COMPOSITEK™

Four times the strength of plywood, CompositTek™ inner sidewalls and under-floor panels are far superior to wood. Composite materials resist moisture, which can lead to rot, mold and mildew that destroy other travel trailers. Composites also weigh as much as 20 percent less, making the coach lighter and easier to tow with the vehicle you already own. And because CompositTek™ replaces plywood elements in the Ascend, less harmful VOCs, such as formaldehyde, allows your family to breathe easier in an EverGreen.

ASCEND

by EVERGREEN

The well-crafted cabinets are screwed and glued – never stapled and feature solid wood door panels.

Large double door refrigerator—uncommon in the ultra-light class.



THE ULTIMATE BASE CAMP

Ascend is designed and equipped to take you and your family to the next level of camping enjoyment. Interior clearance, of just under seven feet, helps give the coach an airy feeling.

Plenty of overhead storage, lower drawers and cabinet space set the Ascend apart in the lightweight class. Countertop space allows for easier food preparation in this fully equipped kitchen.

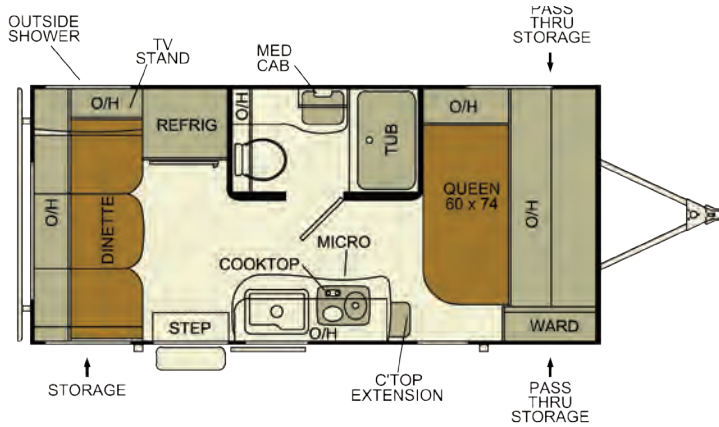
Large, deep-tint, frameless automotive style windows let in more light and increase ventilation, while the pleated shades increase privacy.



Beauflor padded flooring is warranted not to crack in cold weather, is more durable and comfortable to walk on and easy to clean.

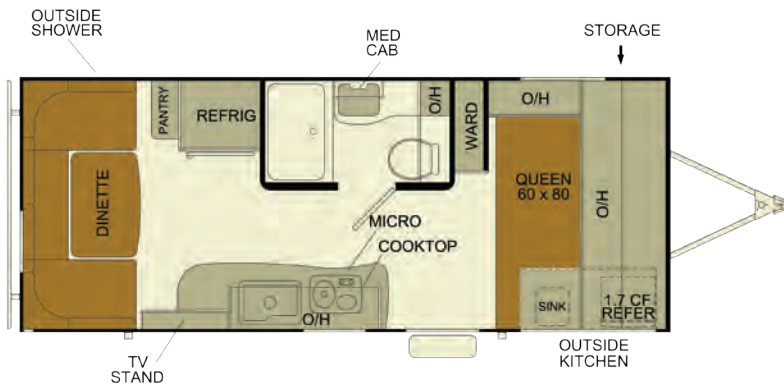
A queen-size innerspring mattress is standard on Ascend with gas-strut assisted storage underneath. The bedroom also has ample storage in side wardrobes and attractive overhead cabinets.





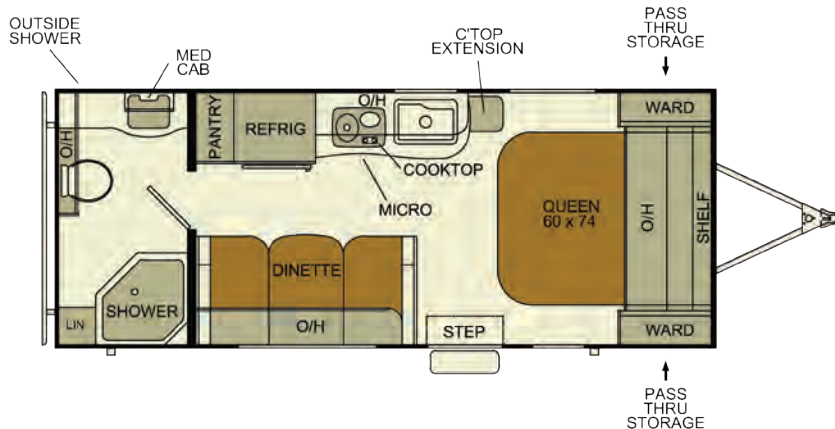
MODEL A171RD

Total Dry Weight (UVW)	3,123
Dry Hitch Weight (LBS)	228
GVWR (LBS)	4,295
Fresh Water Capacity (GAL)	36
Gray Water Tank Capacity (GAL)	29
Black Water Tank Capacity (GAL)	29
LP Capacity (LBS)	40
Cargo Carrying Capacity (LBS)	873
Overall Length	20'-4"
Height (including A/C)	10'-4"
Width	7'-7"
Bed Size	60" x 74"
Power Awning Length	10'
Tire Size	ST225/75R15-D



MODEL A181BH

Total Dry Weight (UVW)	TBD
Dry Hitch Weight (LBS)	TBD
GVWR (LBS)	TBD
Fresh Water Capacity (GAL)	36
Gray Water Tank Capacity (GAL)	29
Black Water Tank Capacity (GAL)	29
LP Capacity (LBS)	40
Cargo Carrying Capacity (LBS)	TBD
Overall Length	22'-11"
Height (including A/C)	10'-4"
Width	7'-7"
Bed Size	60"x80"
Power Awning Length	11'
Tire Size	ST205/75R14-C

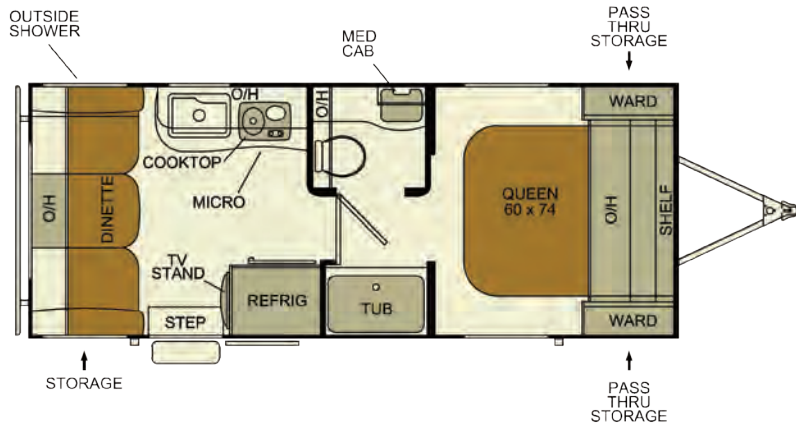


MODEL A191RB

Total Dry Weight (UVW)	3,405
Dry Hitch Weight (LBS)	399
GVWR (LBS)	4,595
Fresh Water Capacity (GAL)	36
Gray Water Tank Capacity (GAL)	29
Black Water Tank Capacity (GAL)	29
LP Capacity (LBS)	40
Cargo Carrying Capacity (LBS)	937
Overall Length	22'-11"
Height (including A/C)	10'-4"
Width	7'-7"
Bed Size	60"x74"
Power Awning Length	12'-6"
Tire Size	ST225/75R15-D

*Estimated weights. Specifications subject to change.

Furniture Features Linoleum



MODEL A191RD

Total Dry Weight (UVW)	3,349
Dry Hitch Weight (LBS)	399
GVWR (LBS)	4,549
Fresh Water Capacity (GAL)	36
Gray Water Tank Capacity (GAL)	29
Black Water Tank Capacity (GAL)	29
LP Capacity (LBS)	40
Cargo Carrying Capacity (LBS)	901
Overall Length	22'-11"
Height (including A/C)	10'-4"
Width	7'-7"
Bed Size	60"x74"
Power Awning Length	12'-6"
Tire Size	ST225/75R15-D

MODEL A231RKB

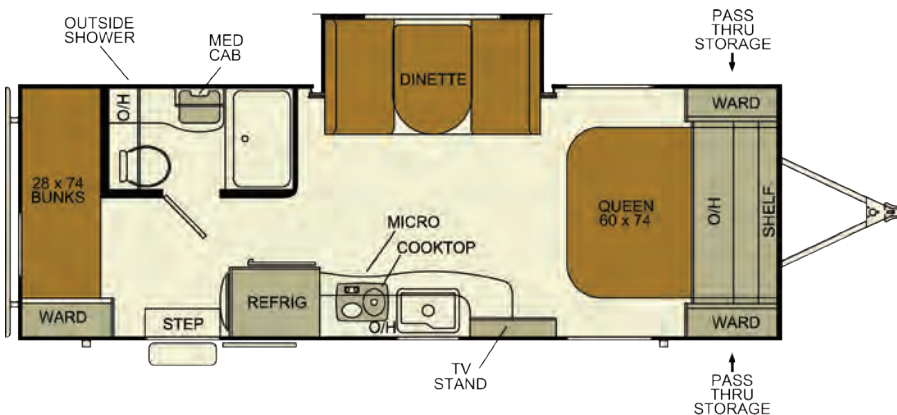
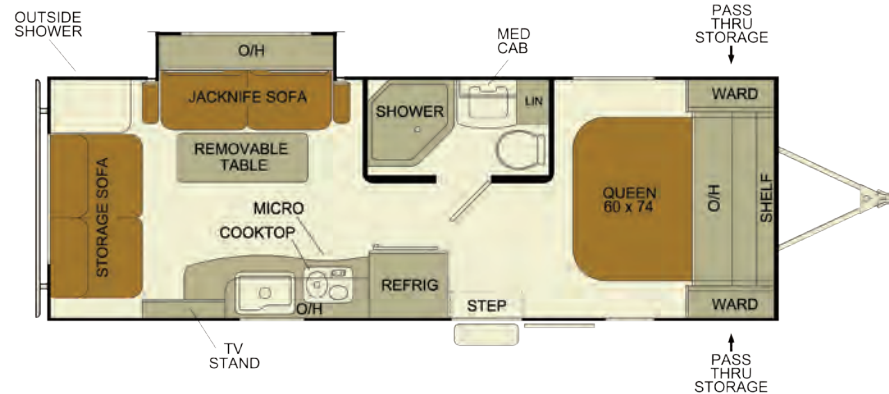
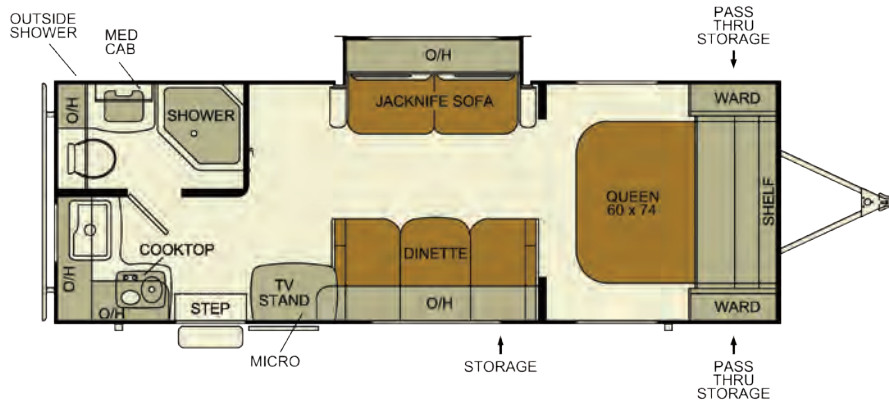
Total Dry Weight (UVW)	3950
Dry Hitch Weight (LBS)	303
GVWR (LBS)	5495
Fresh Water Capacity (GAL)	36
Gray Water Tank Capacity (GAL)	29
Black Water Tank Capacity (GAL)	29
LP Capacity (LBS)	40
Cargo Carrying Capacity (LBS)	1050
Overall Length	26'-3"
Height (including A/C)	10'-4"
Width	7'-7"
Bed Size	60"x74"
Power Awning Length	17'
Tire Size	ST205/75R14-C

MODEL A231RLS

Total Dry Weight (UVW)	TBD
Dry Hitch Weight (LBS)	TBD
GVWR (LBS)	TBD
Fresh Water Capacity (GAL)	36
Gray Water Tank Capacity (GAL)	29
Black Water Tank Capacity (GAL)	29
LP Capacity (LBS)	40
Cargo Carrying Capacity (LBS)	TBD
Overall Length	26'-3"
Height (including A/C)	10'-4"
Width	7'-7"
Bed Size	60"x74"
Power Awning Length	16'
Tire Size	ST205/75R14-C

MODEL A232BHS

Total Dry Weight (UVW)	4100
Dry Hitch Weight (LBS)	510
GVWR (LBS)	5695
Fresh Water Capacity (GAL)	36
Gray Water Tank Capacity (GAL)	29
Black Water Tank Capacity (GAL)	29
LP Capacity (LBS)	40
Cargo Carrying Capacity (LBS)	1100
Overall Length	26'-3"
Height (including A/C)	10'-4"
Width	7'-7"
Bed Size	60"x74"
Power Awning Length	17'
Tire Size	ST205/75R14-C



*Estimated weights. Specifications subject to change.

Economical - Lightweight - Durable

ASCEND

by EVERGREEN

Standard Features

Construction

- Lightweight steel frame
- Dura-Lite™ Double Welded Aluminum Structure sidewalls, roof and floors including window framing
- Vacuum laminated CompositTek™ inner sidewalls and exterior under floor
- One-piece high-gloss fiberglass roof and exterior shell
- 4-corner stabilizer frame jacks
- Diamond plate front stone guard
- LED tail lights

Exterior

- Large, deep-tinted frameless bonded windows
- Outside spray port with self-coiling hose
- Outside speakers
- Awning

Utilities

- 6-Gallon gas/electric DSI water heater
- (2) 20-lb. LP tanks with cover
- Marine-style detachable power cord with LED light
- TV hookup with antenna
- Wired for CD/ DVD player with interior speakers
- LP harness with machine crimped fittings
- Wired for roof AC
- Tank monitor system

Interior

- Padded, "No Crack" vinyl padded flooring
- Queen-sized innerspring mattress
- Dual gas strut under-bed storage supports
- Large double-door refrigerator/freezer
- Wood cabinetry glued and screwed
- Aluminum-framed dinette
- Two burner stovetop
- CO/LP, smoke detector
- Fire extinguisher
- Drawers
- Large bath with separate shower
- Shower curtain and tub surround
- Medicine cabinet with mirror
- Skylight over tub
- Pleated shades

Options

- Aluminum rims
- Atwood® on-demand water heater
- Neo-angle glass shower door (select models)
- Power awning
- Microwave
- 13,500 or 15,000 BTU roof AC
- AM/FM stereo with DVD/CD player W/iPod port
- Spare tire
- Cold climate package
- 3 in 1 convection microwave

"Peace of Mind" Warranty

We're so confident in our quality that we're willing to stand behind our travel trailers and fifth-wheels with one of the best warranties in the industry.

- 1-Year Limited Warranty
- 3-Year Limited Structural Warranty*
- 1-Year Free Roadside Assistance Program

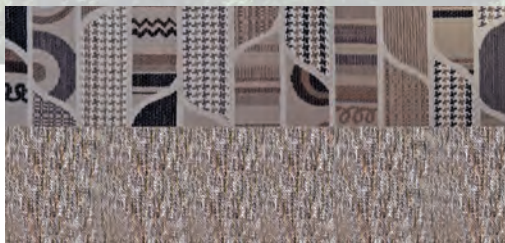
*Contact your EverGreen dealer for an applicable copy of all limited warranties



See Ascend On YouTube!



*Product and specifications subject to change without notice



Fifth Avenue Decor



Bark Decor

Compliments of:

