

# SALEM

TRAVEL TRAILERS & FIFTH WHEELS

LIVE. LAUGH. CAMP!

SALEM





# 26TBUD

CARAMEL DECOR



## BETTER TOWABILITY

The innovative design of the Salem reduces wind resistance which gives you better mileage and a smoother ride.





(SHOWN WITH OPTIONAL TV)



## Salem Travel Trailers

YEARS OF MEMORIES is the expectation in a Salem RV. We understand that a FAMILY may come in many different sizes, which is why we offer FUNCTIONAL FLOORPLANS to meet your needs! With 80" interior heights, deep slides, and U-Shaped dinettes (most models), Salem values the meaning of FAMILY ROOM! Find a spot for all the necessities of camping with the overwhelming amount of storage throughout your Salem RV! Many of our employees have spent time camping, so we know what it takes to build an RV with **THE THINGS THAT MATTER!**



LIVE.  
LAUGH.  
CAMP!

**27RKSS**  
MINERAL DECOR





**LIVE.  
LAUGH.  
CAMP!**

**31BKIS**  
LEATHER DECOR



**(OPTIONAL JACK KNIFE SOFA SHOWN)**



**SALEM**



(SHOWN WITH OPTIONAL TV)

32BHDS MINERAL DECOR

## Salem Interior Features

- |   |  |  |
|---|--|--|
| <p>A. OVERHEAD CABINET 14" DEEP FOR LARGE PLATES</p> <p>B. HUGE STORAGE DRAWER AT BASE OF DINETTE</p> <p>C. 80" INTERIOR HEIGHT</p> <p>D. (4) CUBE SPEAKER SOUND SYSTEM</p> <p>E. HIGH DEFINITION SELF EDGE COUNTERTOPS</p> | <p>F. FM RADIO, CD PLAYER W/ MP3 HOOKUP</p> <p>G. DECORATIVE OVERHEAD DINING LIGHT</p> <p>H. HINGED 1/2 BARREL STORAGE (MOST MODELS)</p> <p>I. HIGH RISE FAUCET AND 60/40 SINK</p> <p>J. NEW HARDWOOD BOOTH TABLE</p> <p>K. 3-BURNER RANGE WITH OVEN AND VENT HOOD</p> | <p>L. ONE PIECE PLANK WOOD LINOLEUM FLOORING</p> <p>M. RESIDENTIAL STYLE CARPET</p> <p>N. SWIVEL ENTERTAINMENT</p> <p>O. FULL EXTENSION BALL BEARING DRAWER GUIDES</p> <p>P. SHOE NOOK</p> |
|---|--|--|

# Salem Interior/Exterior Features



SELF EDGE COUNTERTOPS



HIGH RISE FAUCET AND  
60/40 SINK



EXTRA LARGE PASS-THRU  
STORAGE



HEATED AND ENCLOSED FRESH  
WATER TANK



SOLID DOORS TO BEDROOM



FULL EXTENSION BALL BEARING  
DRAWER GUIDES



EXTRA LARGE POT AND PAN DRAWER  
AT THE DINETTE BASE



SHOE NOOK



STANDARD EXTERIOR KITCHEN WITH R.V. GRILL ON THE 30KQBSS, 31KQBS, 31BKIS, 32BHDS AND 33BHOK IS A GREAT WAY FOR THE CAMP CHEF TO ENJOY THE GREAT OUTDOORS.



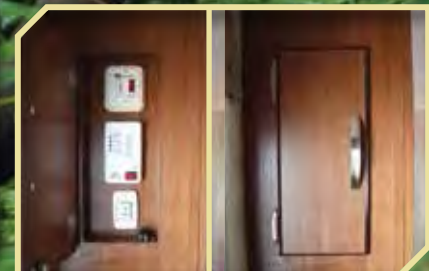
OVERSIZE STORAGE DRAWER  
UNDER THE SOFA



SILVERWARE DRAWER



16 GAL. PER HOUR G/E QUICK  
RECOVERY DSI WATER HEATER



RECESSED COMMAND CENTER

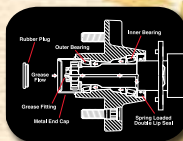


## Craftsmanship



### EXCELLENT CRAFTSMANSHIP

Only the finest attention to detail goes into each Salem. Our skilled craftsman have many years of experience building beautifully finished cabinetry. The solid nature of our well designed woodwork is another reason why Salem is the best built RV on the road.



**E-Z LUBE**  
BEARING LUBRICATION SYSTEM



The E-Z Lube system allows grease to flow with ease to both the outer and inner bearings for a complete repack. No disassembly required.

## Salem Construction

- A. RADIUS TRIPLE ENTRY STEPS
- B. 2" X 3" FLOOR JOISTS 12" ON CENTER
- C. 5/8" 5-PLY TONGUE & GROOVE PLYWOOD FLOOR DECKING
- D. 2" WALL STUDS 16" OR LESS ON CENTER
- E. RADIUS FIBERGLASS 30" ENTRY DOOR
- F. .024 ALUMINUM SIDING
- G. 5" BOWED TRUSS ROOF RAFTERS

- H. SEAMLESS, ONE PIECE ROOF (12 YR. WARRANTY)
- I. R-7 FIBERGLASS INSULATION THROUGHOUT
- J. EXTRA LARGE FULL PASS THRU STORAGE
- K. CLAMP RING SAFETY GLASS WINDOWS
- L. SMOOTH ROLLED SKIRTING
- M. IN FLOOR DUCTED HEAT
- N. DIAMOND PLATE ROCKGUARD
- O. 3/8" ROOF DECKING (FULL WALK-ON ROOF)

- P. LP BOTTLE COVER W/ EASY ACCESS
- Q. 13.5K DUCTED ROOF, HIGH OUTPUT A/C
- R. STAIN RESISTANT CARPET
- S. HITCH LIGHT
- T. E-Z LUBE AXLES
- U. PREMIUM GRAPHICS

# Salem Standards and Options

## Construction and Interior

- Full Walk on One Piece Seamless Roof with 12 yr. Warranty
- Extra Large Full Pass Through Storage (per floorplan)
- E-Z Lube Axles
- Cold Crack and Mildew Resistant Vinyl Patio Awning
- Safety Glass Windows
- Steel Framed 30" Smooth Radius Fiberglass Main Entry Door
- Powder Coated I-beam Frame
- Cambered Chassis
- Enclosed Fresh Water Tank in a Heated Compartment
- 16 Gal. per hour G/E Quick Recovery DSI Water Heater
- Water Heater By-pass
- Nitrogen Filled Tires
- 2" Wall Construction 16" (or less) on Center
- R-7 Fiberglass Insulation Throughout
- 13-ply Cross Micro-Laminated Beam Header above Slide-outs
- Triple Sealed Slideouts
- Electric Slide-Out Systems (Flush Floor)
- Swing Arm Entry Assist Handle
- Two Marine Grade Exterior Speakers
- Electric Front Jacks (Fifth Wheels)
- Fiberglass Front Cap (Fifth Wheels)

## Kitchen

- Dometic® Double Door Refrigerator (2 yr. Warranty)
- High Rise Faucet
- Deep Basin 60/40 Residential Style Sink
- Microwave w/ Carousel
- 3-Burner, High Output Range with Oven (2 yr. Warranty)
- Range Hood with 12-Volt Exhaust Fan and Light
- One Piece Plank Wood Linoleum Flooring

- Self Edge Kitchen Countertops
- Solid Wood Drawers
- Knife Rack (behind cooktop)
- Large Overhead Cabinets
- Wall-Mounted Systems Convenience Panel
- New Brushed Nickel Hardware
- Full Extension Ball Bearing Drawer Guides
- Abundant Cabinet Storage

## Living Room

- 80" Interior Height Travel Trailers (101" Fifth Wheel models)
- Ducted 13,500 BTU Roof Air Conditioner w/ Quick Cool
- Huge Storage Drawer at Sofa Base (Select Models)
- Extra Large Pedestal Booth Dinette w/ Large Drawer (most models)
- Large Dinette Picture Window
- Digital TV Antenna and Booster
- Extra Large Overhead Cabinets
- Patio Door w/ Vertical Blinds (37BHSS2Q, 36BHBS, 37REDS)
- 25K BTU Suburban Forced Air DSI Furnace w/ Digital Thermostat (2 yr. Warranty)
- In-Floor Ducted Heat

## Bedroom

- Evergreen Mattress
- Plush Comforter and Headboard
- Strut Lifted Storage Area under Bed
- Bedside Mirrored Wardrobes
- Bedside 110v Power Outlets (2)
- Solid Bedroom Privacy Doors
- Storage Shelf Above Bed

## Bathroom

- 12-Volt Power Bath Roof Exhaust Vent
- Wooden Medicine Cabinet w/ Mirrored Door
- Fresh-Water Flush Toilet
- Tooth Brush Holder and Towel Ring
- Vinyl Tub Surround

## Security and Safety

- LP Leak Detector
- Smoke Detector
- LED Docking Lights (Fifth Wheels)
- Carbon Monoxide Detector
- Fire Extinguisher
- Hitch Light (Travel Trailers)
- Amber Patio Light
- Welded Heavy Duty Safety Chains (Travel Trailers)
- Electric Brakes (all wheels)
- GFI Receptacles
- ANSI 119.2 Certified
- Meets all National Highway Administration Specifications

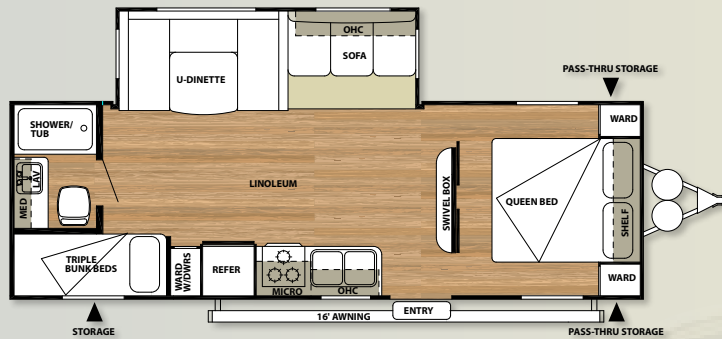
## Salem Options

- Stabilizer Jacks (Travel Trailer (4) or Fifth Wheel (2))
- Cable TV/Satellite Hook-up
- Skylight over Tub
- 30-lb LP Bottles w/ Cover and Auto Change Over (Travel Trailers)
- Neo-Angle Glass Shower w/ Tub Surround (27RLSS, 27RKSS, 29RKSS, 30FKBS, 31BKIS, 36BHBS, 37BHSS2Q)
- 15,000 BTU Ducted Air w/Quick Cool

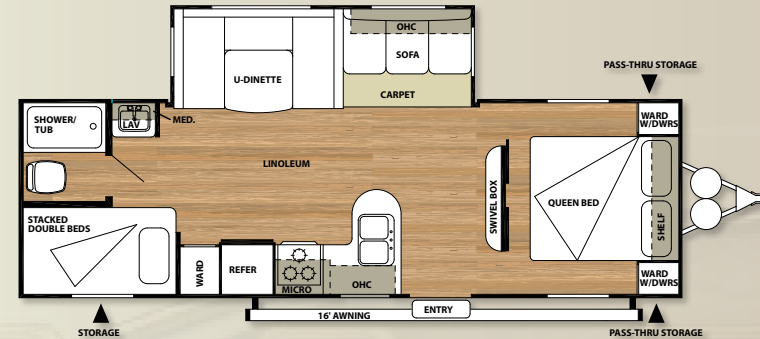
Contact your Salem dealer for a complete list of options.



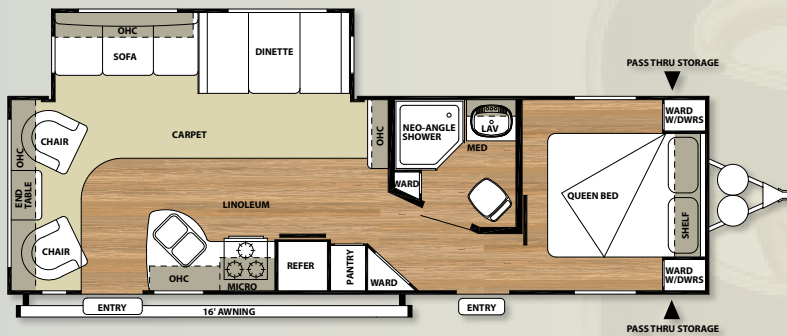
# Salem Travel Trailer Floorplans & Specs



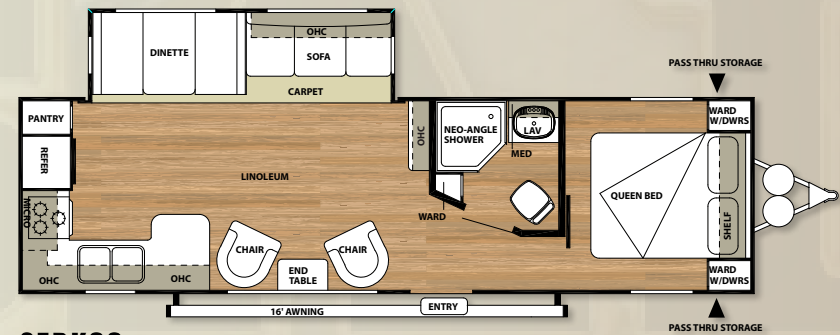
**26TBUD**



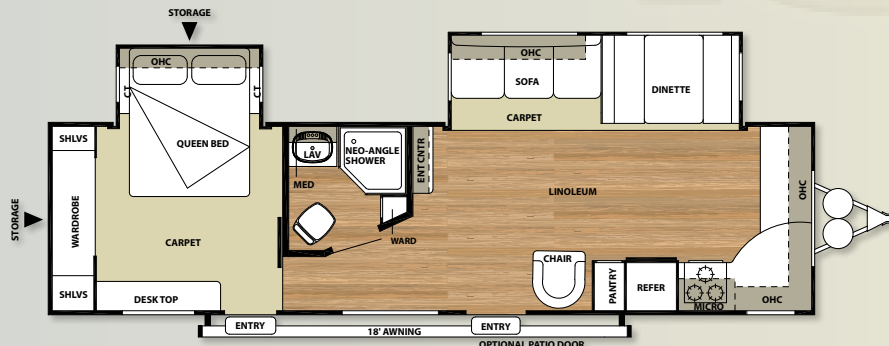
**27DBUD**



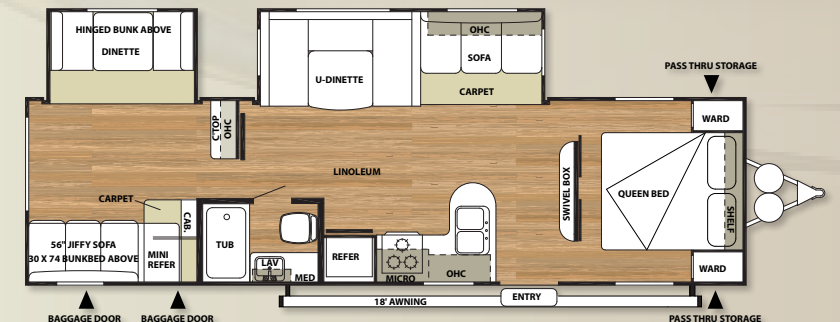
**27RLSS**



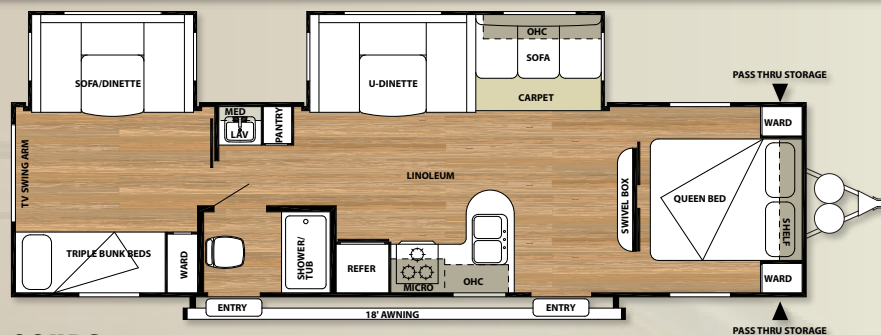
**27RKSS**



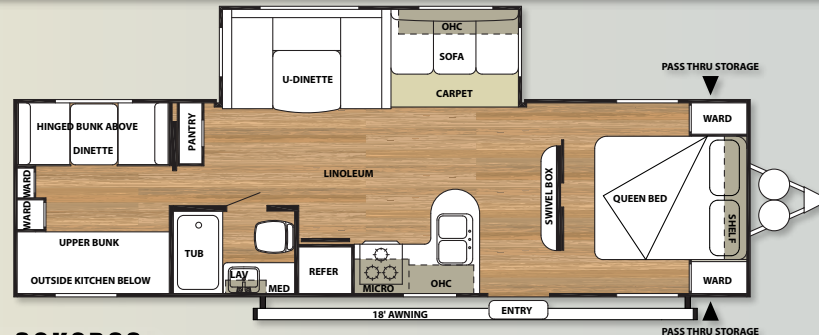
**29FKBS**



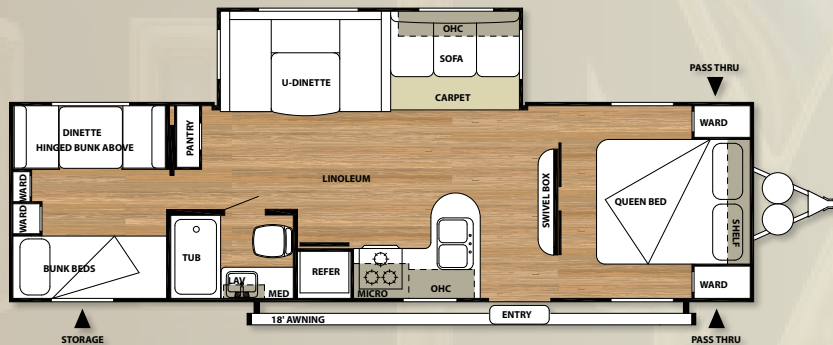
**29QBDS**



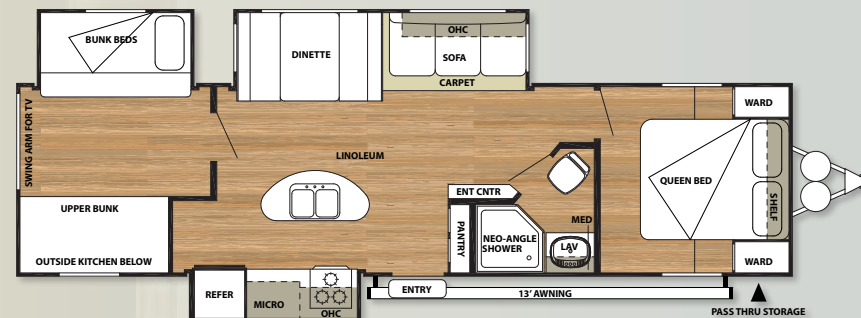
**29UD3**



**30KQBSS**



**30QBSS**



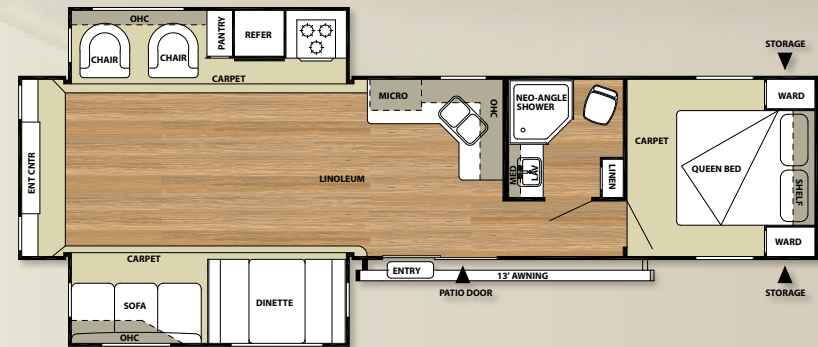
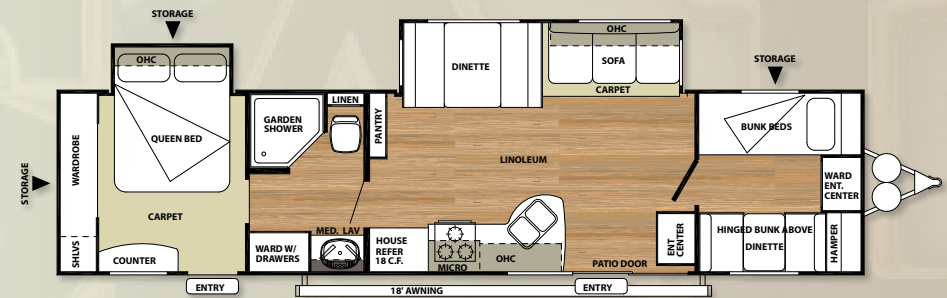
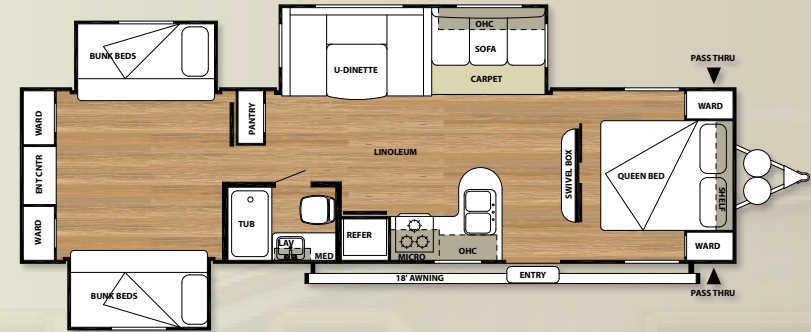
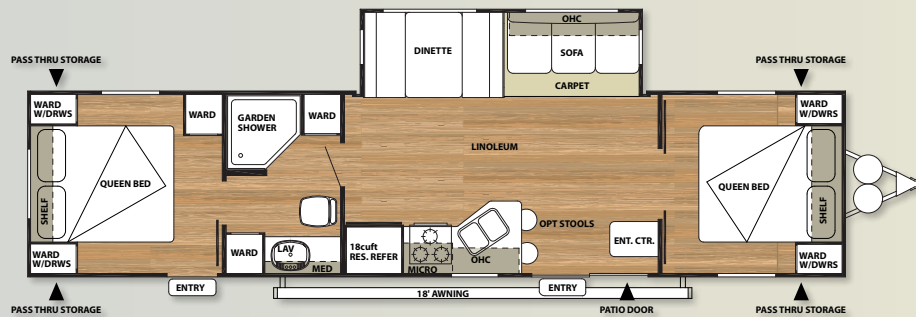
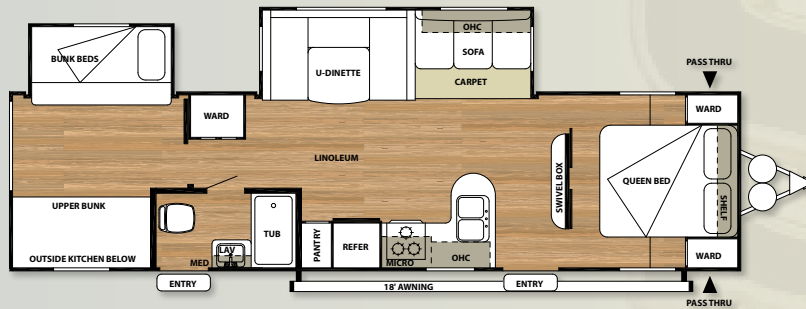
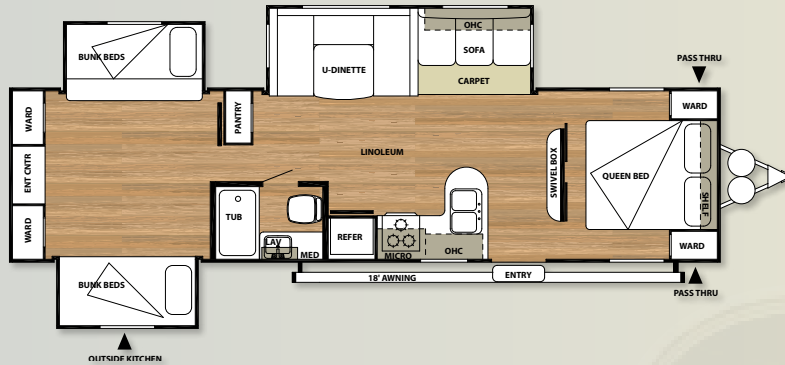
**31BKIS**

**travel trailer specifications**

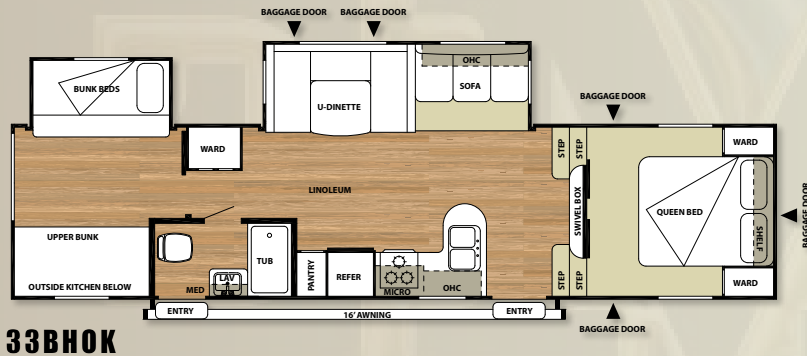
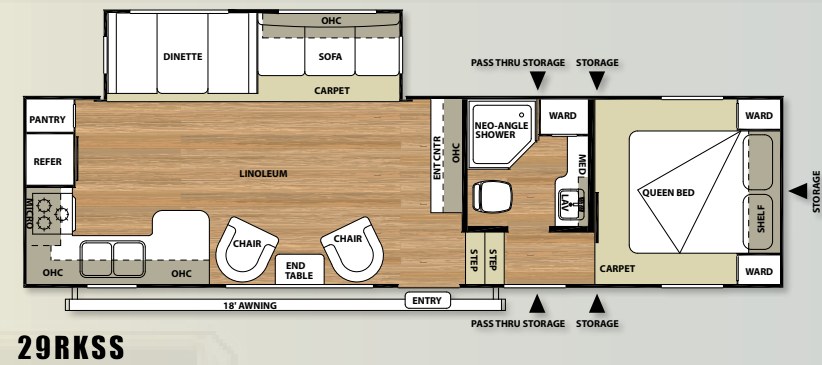
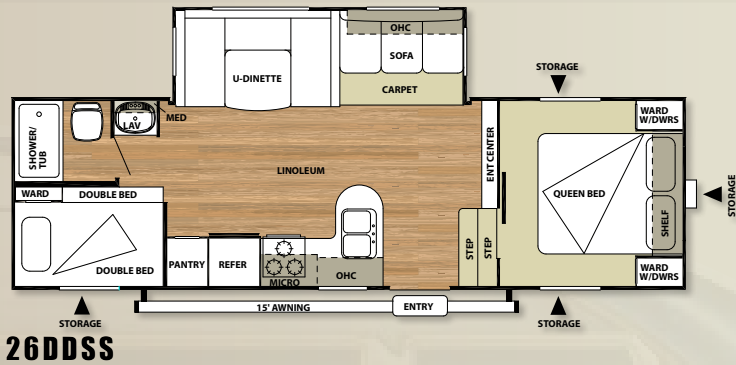
MODEL	26TBUD	27DBUD	27RLSS	27RKSS	29FKBS	29QBDS	29UD3	30KQBSS	30QBSS	31BKIS
Hitch Weight (lbs)	815	772	650	720	826	899	956	899	980	970
Axle Weight	4915	5392	5723	5635	6687	6019	6603	5985	5595	7380
Dry Ship Weight	5730	6164	6373	6355	7513	6918	7559	6884	6575	8350
CCC (cargo cap)	2047	1549	1239	1327	3414	2722	3519	2777	3167	2742
Ext Length	29'0"	29'6"	32'2"	33'3"	35'3"	34'0"	36'5"	33'0"	33'2"	35'8"
Ext Height	11'2"	11'2"	10'11"	11'2"	11'2"	11'2"	11'2"	11'2"	11'2"	11'3"
Fresh Water Cap (gal)*	40	40	40	40	40	40	40	40	40	40
Black Water Cap (gal)	32	32	34	34	32	34	32	34	34	32
Grey Water Cap (gal)	34	34	64	64	66	34	34	34	34	64
Tire Size (in)	15"	15"	15"	15"	15"	15"	15"	15"	15"	15"
Awning Size (ft)	16'	16'	16'	16'	18'	18'	18'	18'	18'	13'

\*Includes hot water heater

# Salem Travel Trailer Floorplans & Specs



# Salem Fifth Wheel Floorplans & Specs



## travel trailer specifications

## fifth wheel specifications

MODEL	31KQBT5	31QBT5	32BHDS	36BHBS	37BHSS2Q	37REDS	26DDSS	29RKSS	33BHOK
Hitch Weight (lbs)	793	885	859	720	970	1005	1272	1418	1704
Axle Weight	7109	7255	7096	7171	6630	8035	5831	6414	7403
Dry Ship Weight	7902	8140	7955	7891	7600	9040	7103	7831	9107
CCC (cargo cap)	3013	2867	3026	2951	3492	2065	2981	3709	2719
Ext Length	36'1"	35'6"	35'8"	36'7"	39'	38'7"	30'9"	34'1"	37'9"
Ext Height	11'2"	11'2"	11'2"	11'2"	11'2"	10'1"	12'3"	12'3"	12'9"
Fresh Water Cap (gal)*	40	40	40	40	40	40	40	40	40
Black Water Cap (gal)	34	34	32	32	34	43	34	32	32
Grey Water Cap (gal)	68	34	66	34	32	43	32	64	66
Tire Size (in)	15"	15"	15"	15"	15"	15"	15"	15"	15"
Awning Size (ft)	18'	18'	18'	18'	18'	13'	15'	18'	16'

\*Includes hot water heater



### PRE-DELIVERY INSPECTION FACILITY

20,000 square feet of quality assurance. The bare essentials for a premium product. This state-of-the-art facility gives immediate daily feedback to production for quality assurance



Forest River, Inc. encourages our customers to purchase their Forest River products from a local dealership whenever possible for the following reasons:

It is the goal of Forest River, Inc. that all of our RV owners fully enjoy the RV experience and that customer satisfaction meets or exceeds their expectations!

- 1) Forest River, Inc. dealers are independently owned and operated businesses so priority service and scheduling is at their discretion and is often provided to customers that purchased their unit at that dealership.
- 2) Purchasing locally allows customers to establish meaningful relationships with a dealer, enhancing the RV experience through assistance with product questions, user tips or RV regulations for your state or country, and much more!
- 3) Canadian customers must meet requirements to bring an RV purchased out of the country to their home. These requirements may involve additional inspections and certifications, taxes and fees. Your local Canadian Dealer is a professional at meeting these requirements.
- 4) Scheduling timely warranty repairs and adjustments through a local dealership provides far greater flexibility and convenience to you, the customer!

### 24/7 EMERGENCY ROADSIDE ASSISTANCE

For a worry-free ownership experience

Forest River includes one

year of Coach-Net RV Technical & Roadside Assistance with each RV purchase. Whether new to the RV lifestyle or an experienced RV enthusiast, Forest River owners have 24/7 access to technical, operational and emergency road service coverage throughout the US & Canada.

Coach-Net's fast, dependable service is just a phone call away.

## Coach-Net®

RV Technical & Roadside Assistance

**FREE MEMBERSHIP**  
to Forest River Owners' Group

[www.forestriverfrog.com](http://www.forestriverfrog.com)



### MINERAL DECOR



### LEATHER DECOR



### CARAMEL DECOR



### THE SALEM FAMILY



CRUISE LITE



SALEM



VILLA SERIES



HEMISPHERE



#### Learn More

Scan this barcode using a QR Reader on your smart phone to learn more about Forest River.



A Berkshire Hathaway company.

Forest River, Inc.  
55470 C.R. 1, Elkhart, IN 46515  
(574) 389-4600

[www.forestriverinc.com/salem](http://www.forestriverinc.com/salem)  
[www.forestriveraccessories.com](http://www.forestriveraccessories.com)

All specifications contained herein are based on the latest product information at time of printing. Forest River reserves the right to make changes in colors, materials, equipment and specifications at any time without notice and assumes no responsibility for any errors in this brochure. The pictures in this brochure may show props and optional equipment. PLD918

© 2014 - Salem - a division of Forest River Inc.  
A Berkshire Hathaway company

# SALEM

NORTHWEST  
TRAVEL TRAILERS

LIVE. LAUGH. CAMP!

SALEM





# 26TBUD

CARAMEL DECOR



## BETTER TOWABILITY

The innovative design of the Salem reduces wind resistance which gives you better mileage and a smoother ride.





(SHOWN WITH OPTIONAL TV)

**SALEM**  
NORTHWEST

## Salem Travel Trailers

YEARS OF MEMORIES is the expectation in a Salem RV. We understand that a FAMILY may come in many different sizes, which is why we offer FUNCTIONAL FLOORPLANS to meet your needs! With 80" interior heights, deep slides, and U-Shaped dinettes (most models), Salem values the meaning of FAMILY ROOM! Find a spot for all the necessities of camping with the overwhelming amount of storage throughout your Salem RV! Many of our employees have spent time camping, so we know what it takes to build an RV with **THE THINGS THAT MATTER!**



LIVE.  
LAUGH.  
CAMP!

**27RKSS**  
MINERAL DECOR





**SALEM**  
NORTHWEST



(SHOWN WITH OPTIONAL TV)

**32BHDS MINERAL DECOR**

## Salem Interior Features

- |   |  |  |
|---|--|--|
| A. OVERHEAD CABINET 14" DEEP FOR LARGE PLATES | F. FM RADIO, CD PLAYER W/ MP3 HOOKUP       | L. ONE PIECE PLANK WOOD LINOLEUM FLOORING    |
| B. HUGE STORAGE DRAWER AT BASE OF DINETTE     | G. DECORATIVE OVERHEAD DINING LIGHT        | M. RESIDENTIAL STYLE CARPET                  |
| C. 80" INTERIOR HEIGHT                        | H. HINGED 1/2 BARREL STORAGE (MOST MODELS) | N. SWIVEL ENTERTAINMENT                      |
| D. (4) CUBE SPEAKER SOUND SYSTEM              | I. HIGH RISE FAUCET AND 60/40 SINK         | O. FULL EXTENSION BALL BEARING DRAWER GUIDES |
| E. HIGH DEFINITION COUNTERTOPS                | J. DECORATIVE CURTAIN RODS                 | P. SHOE NOOK                                 |
|   | K. 3-BURNER RANGE WITH OVEN AND VENT HOOD  |  |

# Salem Interior/Exterior Features



HIGH RISE FAUCET AND  
60/40 SINK



EXTRA LARGE PASS-THRU  
STORAGE



HEATED AND ENCLOSED FRESH  
WATER TANK



RECESSED COMMAND CENTER



SOLID DOORS TO BEDROOM



FULL EXTENSION BALL BEARING  
DRAWER GUIDES



EXTRA LARGE POT AND PAN DRAWER  
AT THE DINETTE BASE



SHOE NOOK



STANDARD EXTERIOR KITCHEN WITH R.V. GRILL ON THE 30KQBSS, 31KQBS  
AND 32BHDS IS A GREAT WAY FOR THE CAMP CHEF TO ENJOY THE GREAT  
OUTDOORS.



OVERSIZE STORAGE DRAWER  
UNDER THE SOFA



SILVERWARE DRAWER



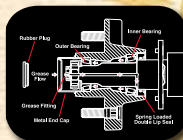
16 GAL. PER HOUR G/E QUICK  
RECOVERY DSI WATER HEATER

**SALEM**  
NORTHWEST



## EXCELLENT CRAFTSMANSHIP

Only the finest attention to detail goes into each Salem. Our skilled craftsman have many years of experience building beautifully finished cabinetry. The solid nature of our well designed woodwork is another reason why Salem is the best built RV on the road.



The E-Z Lube system allows grease to flow with ease to both the outer and inner bearings for a complete repack. No disassembly required.

# Salem Construction

- |  |   |                                       |
|--|---|---------------------------------------|
| A. RADIUS TRIPLE ENTRY STEPS           | H. SEAMLESS, ONE PIECE ROOF (12 YR. WARRANTY) | P. LP BOTTLE COVER W/ EASY ACCESS     |
| B. 2" X 3" FLOOR JOISTS 12" ON CENTER  | I. R-7 FIBERGLASS INSULATION THROUGHOUT       | Q. 13.5K DUCTED ROOF, HIGH OUTPUT A/C |
| C. 5/8" STRUCTURE WOOD FLOOR DECKING   | J. EXTRA LARGE FULL PASS THRU STORAGE         | R. STAIN RESISTANT CARPET             |
| D. 2" WALL STUDS 16" OR LESS ON CENTER | K. CLAMP RING SAFETY GLASS WINDOWS            | S. HITCH LIGHT                        |
| E. RADIUS FIBERGLASS 30" ENTRY DOOR    | L. SMOOTH ROLLED SKIRTING                     | T. E-Z LUBE AXLES                     |
| F. .024 ALUMINUM SIDING                | M. IN FLOOR DUCTED HEAT                       | U. PREMIUM GRAPHICS                   |
| G. 5" BOWED TRUSS ROOF RAFTERS         | N. DIAMOND PLATE ROCKGUARD                    |                                       |
|  | O. 3/8" ROOF DECKING (FULL WALK-ON ROOF)      |                                       |

# Salem Standards and Options

## Construction and Interior

- Full Walk on One Piece Seamless Roof with 12 yr. Warranty
- Extra Large Full Pass Through Storage (per floorplan)
- E-Z Lube Axles
- Cold Crack and Mildew Resistant Vinyl Patio Awning
- Safety Glass Windows
- Steel Framed 30" Smooth Radius Fiberglass Main Entry Door
- Cambered Chassis
- Enclosed Fresh Water Tank in a Heated Compartment
- 16 Gal. per hour G/E Quick Recovery DSI Water Heater
- Water Heater By-pass
- 2" Wall Construction 16" (or less) on Center
- R-7 Fiberglass Insulation Throughout
- 13-ply Cross Micro-Laminated Beam Header above Slide-outs
- Triple Sealed Slideouts
- Electric Slide-Out Systems (Flush Floor)
- Swing Arm Entry Assist Handle
- Two Marine Grade Exterior Speakers

## Kitchen

- Dometic® Double Door Refrigerator (2 yr. Warranty)
- High Rise Faucet
- High Definition Countertops
- Deep Basin 60/40 Residential Style Sink
- Microwave w/ Carousel
- 3-Burner, High Output Range with Oven (2 yr. Warranty)
- Range Hood with 12-Volt Exhaust Fan and Light
- One Piece Plank Wood Linoleum Flooring
- Solid Wood Drawers
- Knife Rack (behind cooktop)
- Large Overhead Cabinets
- Wall-Mounted Systems Convenience Panel

- New Brushed Nickel Hardware
- Full Extension Ball Bearing Drawer Guides
- Abundant Cabinet Storage

## Living Room

- 80" Interior Height Travel Trailers
- Ducted 13,500 BTU Roof Air Conditioner w/ Quick Cool
- Huge Storage Drawer at Sofa Base (Select Models)
- Extra Large Pedestal Booth Dinette w/ Large Drawer (most models)
- Large Dinette Picture Window
- Digital TV Antenna and Booster
- Extra Large Overhead Cabinets
- 25K BTU Suburban Forced Air DSI Furnace w/ Digital Thermostat (2 yr. Warranty)
- In-Floor Ducted Heat

## Bedroom

- Plush Comforter and Headboard
- Strut Lifted Storage Area under Bed
- Bedside Mirrored Wardrobes
- Bedside 110v Power Outlets (2)
- Solid Bedroom Privacy Doors
- Storage Shelf Above Bed

## Bathroom

- Neo-Angle Shower w/ Tub Surround (Select Models)
- 12-Volt Power Bath Roof Exhaust Vent
- Wooden Medicine Cabinet w/ Mirrored Door
- Fresh-Water Flush Toilet
- Tooth Brush Holder and Towel Ring
- Vinyl Tub Surround

## Security and Safety

- LP Leak Detector
- Smoke Detector
- Carbon Monoxide Detector
- Fire Extinguisher
- Hitch Light (Travel Trailers)
- Amber Patio Light
- Welded Heavy Duty Safety Chains (Travel Trailers)
- Electric Brakes (all wheels)
- GFI Receptacles
- ANSI 119.2 Certified
- Meets all National Highway Administration Specifications

## Northwest Package

- Northwest Insulation - Fully insulated walls and floor, Double Insulation in Ceiling provides year round comfort
- Diamond Plate Front Shield
- Northwest Roof System - Full front to back walk on roof, one piece rubber to prevent leaks provides sturdy roof for snow loads and storage pod
- Auto Loom-Protects 12 volt wire
- Tinted Windows
- 2 x 3's with Metal Strapping - At key stress areas
- Northwest Winterization Package - Water Heater By-Pass, color coded freeze resistant water lines

## Salem Options

- Stabilizer Jacks (4)
- Cable TV/Satellite Hook-up
- Skylight over Tub
- 30-lb LP Bottles w/ Cover and Auto Change Over

*Contact your Salem dealer for a complete list of options*

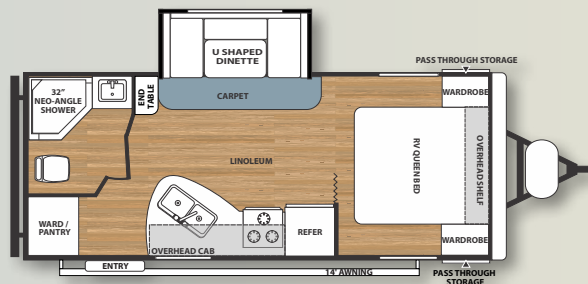


# SALEM

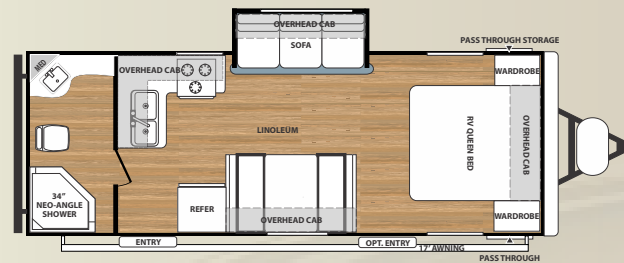
NORTHWEST



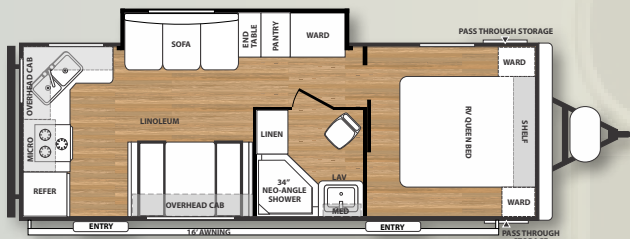
# Salem Travel Trailer Floorplans



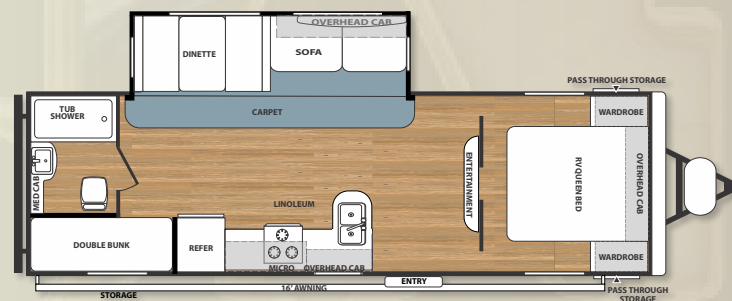
**21RBS**



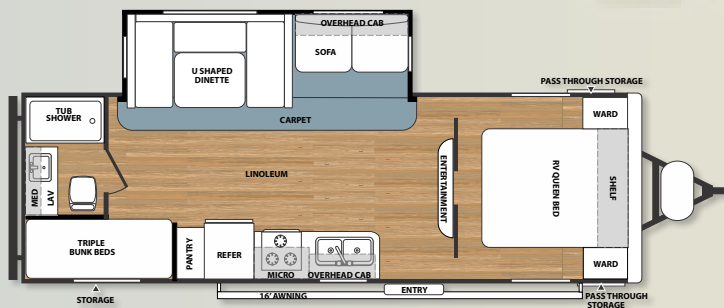
**23FBS**



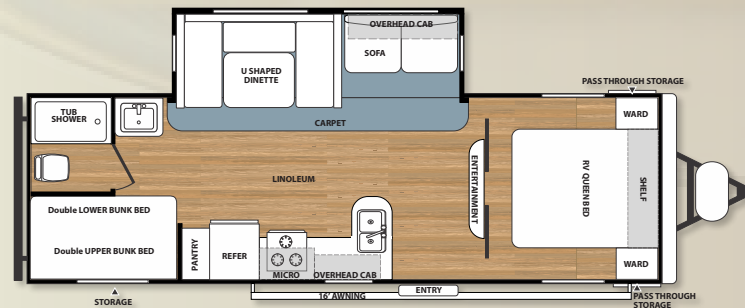
**24RKS**



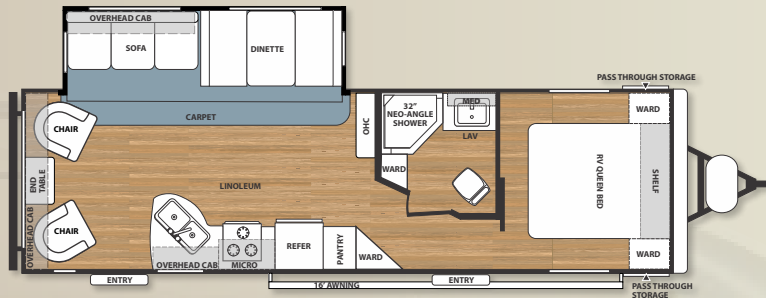
**26GBUD**



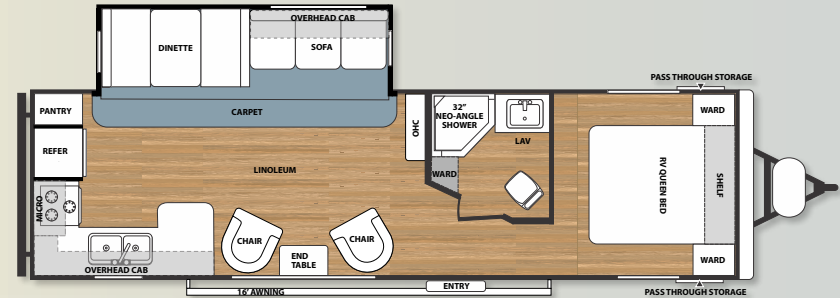
**26TBUD**



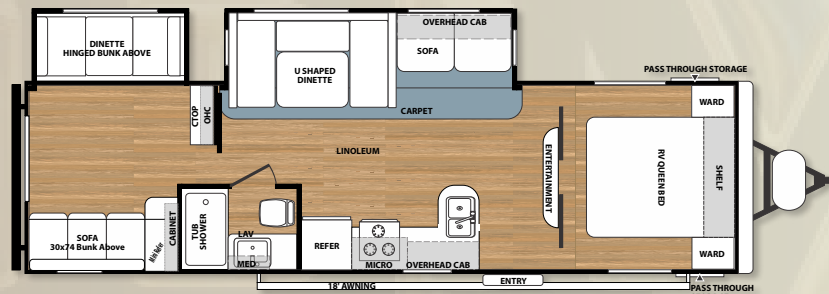
**27DBUD**



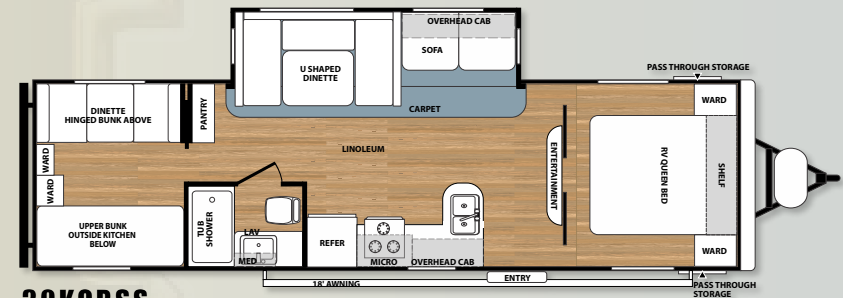
**27RLSS**



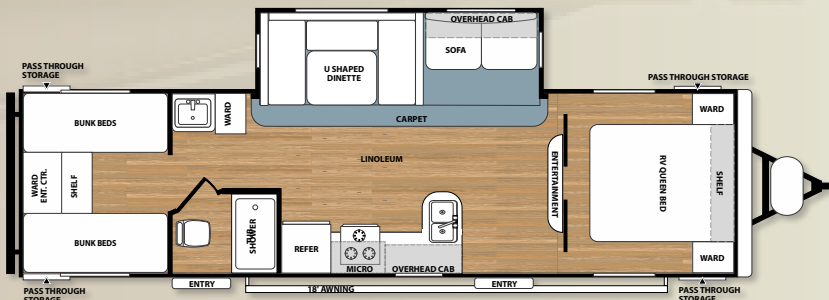
**27RKSS**



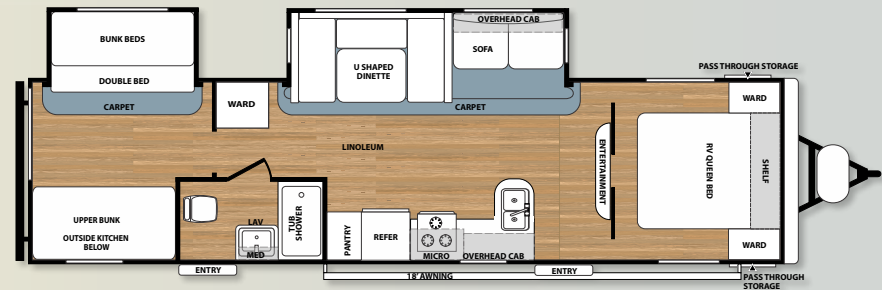
**29QBDS**



**30KQBSS**



**30QBSS**



**32BHDS**

Please refer to the back cover regarding specifications

## travel trailer specifications

MODEL	T21RBS	T23FBS	T24RKS	T26GBUD	T26TBUD	T27DBUD	T27RKSS	T27RLSS	T29QBDS	T30QBSS	T30KQBSS	T32BHDS
HITCH WEIGHT	515	585	625	745	800	785	860	697	890	995	915	910
SHIPPING WEIGHT	4815	5041	5444	5735	6310	6060	6760	6380	7355	6675	6820	8245
GVWR	7515	7585	7625	7745	7800	7785	9660	9497	9690	9795	9715	11070
CCC (Cargo Capacity)	2662	2506	2143	1972	1452	1687	2862	3079	2297	3082	2857	2787
EXT. LENGTH	24' 9"	26' 2"	27' 10"	30' 5"	28' 9"	30'	33' 2"	32' 2"	34'	33' 2"	33' 2"	36'
EXT. HEIGHT W/AC	11' 1"	10' 6"	11' 3"	11' 3"	11' 3"	11' 3"	11' 3"	11' 3"	11' 3"	11' 3"	11' 3"	11' 3"
INT. HEIGHT	80"	80"	80"	80"	80"	80"	80"	80"	80"	80"	80"	80"
FRESH TANK *	45	56	45	45	45	45	45	45	45	45	45	45
GREY TANK	27	33	64	27	27	27	66	66	32	32	32	59
BLACK TANK	32	34	27	33	33	32	42	42	42	27	27	32
AWNING SIZE	14'	17'	16'	16'	16'	16'	16'	16'	18'	18'	18'	18'

\*Includes hot water heater

**24/7 EMERGENCY ROADSIDE ASSISTANCE**

For a worry-free ownership experience, Forest River includes one year of Coach-Net RV Technical & Roadside Assistance with each RV purchase. Whether new to the RV lifestyle or an experienced RV enthusiast, Forest River owners have 24/7 access to technical, operational and emergency road service coverage throughout the US & Canada. Coach-Net's fast, dependable service is just a phone call away.

**Coach-Net**  
RV Technical & Roadside Assistance

**FREE MEMBERSHIP**  
to Forest River Owners' Group

www.forestriverfrog.com



- 1) Forest River, Inc. dealers are independently owned and operated businesses so priority service and scheduling is at their discretion and is often provided to customers that purchased their unit at that dealership.
- 2) Purchasing locally allows customers to establish meaningful relationships with a dealer, enhancing the RV experience through assistance with product questions, user tips or RV regulations for your state or country, and much more!
- 3) Canadian customers must meet requirements to bring an RV purchased out of the country to their home. These requirements may involve additional inspections and certifications, taxes and fees. Your local Canadian Dealer is a professional at meeting these requirements.
- 4) Scheduling timely warranty repairs and adjustments through a local dealership provides far greater flexibility and convenience to you, the customer!

It is the goal of Forest River, Inc. that all of our RV owners fully enjoy the RV experience and that customer satisfaction meets or exceeds their expectations!

## MINERAL DECOR



## LEATHER DECOR



## CARAMEL DECOR



## THE SALEM FAMILY



CRUISE LITE



SALEM



VILLA SERIES



HEMISPHERE



**Learn More**  
Scan this barcode using a QR Reader on your smart phone to learn more about Forest River.



A Berkshire Hathaway company.

Forest River, Inc.  
1429 SE Uglov  
Dallas, OR 97338  
(503) 831-1200

[www.forestriverinc.com/salem](http://www.forestriverinc.com/salem)  
[www.forestriveraccessories.com](http://www.forestriveraccessories.com)

All specifications contained herein are based on the latest product information at time of printing. Forest River reserves the right to make changes in colors, materials, equipment and specifications at any time without notice and assumes no responsibility for any errors in this brochure. The pictures in this brochure may show props and optional equipment. PLD918

© 2014 - Salem - a division of Forest River Inc.  
A Berkshire Hathaway company

# SALEM



ENJOY THE GREAT OUTDOORS



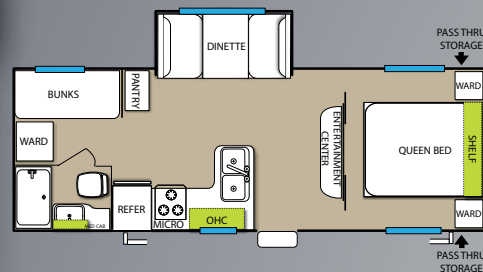
# Features

- 6'-6" Interior Height
- 3 Burner Cook Top
- Super Lube Axles
- Smooth Metal Front Wrap w/ Rock Guard
- Switch Control Center
- TV Antenna w/ Booster
- Microwave w/ Carousel
- Water Heater By-Pass
- Radial Tires
- 13.5 Air Conditioner
- Exterior Marine Speakers
- Designer Bedding
- Wood Plank Lino
- Decorative Curtain Rods w/ Pleated Shades in Living Area
- Retractable Awning
- Safety Glass Black Framed Slider Windows
- Radius Entry Door and Steps
- 30amp Power Cord
- Pass Through Storage (most models)
- Full Extension Ball Bearing Drawer Guides
- 6gal Direct Spark Ignition Water Heater
- Foot Flush Toilet
- DVD, MP3, CD, FM Stereo
- Self Adjusting Brakes
- 56gal Fresh Water Capacity

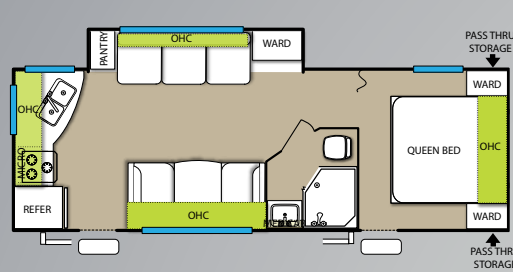
# Options

- Double Door Refer IPO Single Door
- 15K Ducted Air Conditioning (NA Non-Slide Models)
- Range W/ Oven IPO Cook Top
- Spare Tire & Carrier w/ Cover
- Stabilizer Jacks
- Outside Kitchen (T281QBXL Only)
- Power Tongue Jack
- Electric Awning
- Roof Ladder
- Skylight Over Tub
- Black Tank Flush
- 30# LP Bottles
- Cable / Satellite TV Ready
- 160W Solar Panel w/ Regulator
- Climate Package A (Radiant Foil & 12v Heat Strips
- Tankless Water Heater

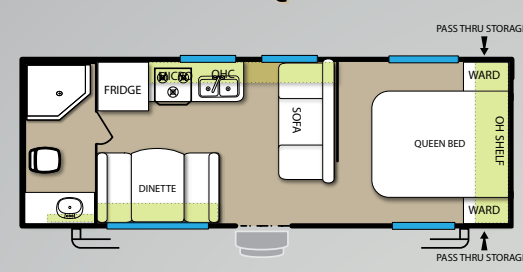
**T231BHXL**



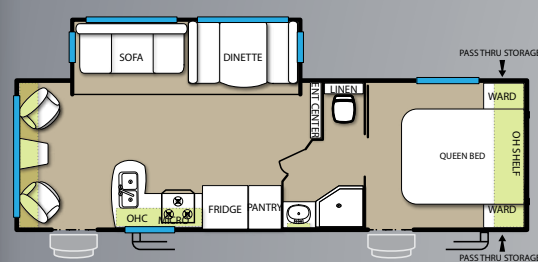
**T231RKXL**



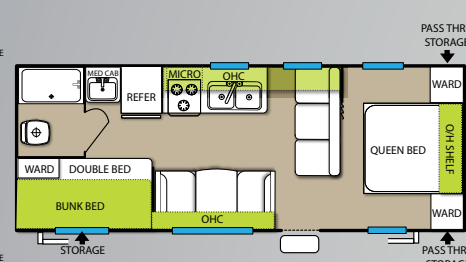
**T241QBXL**



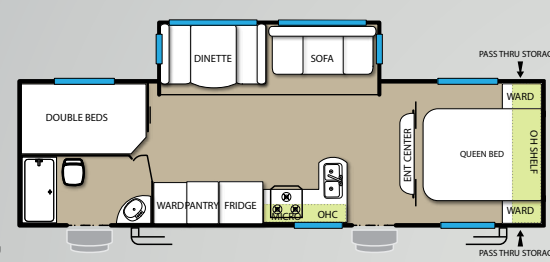
**T252RLXL**



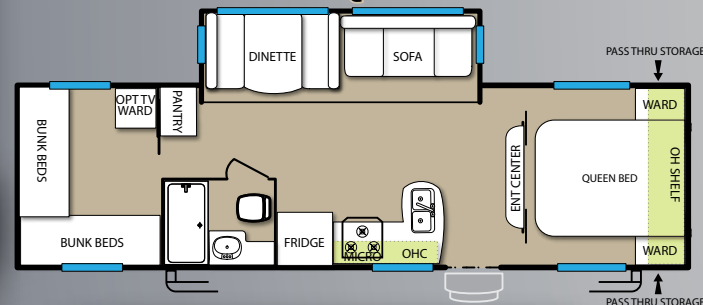
**T261BHXL**



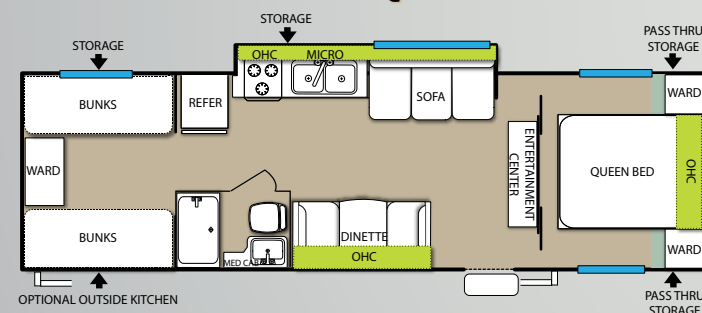
**T262BHXL**



**T272QBXL**



**T281QBXL**



# Cruise Lite Specs

MODEL	HITCH WEIGHT	DRY WEIGHT	CCC	EXT LENGTH	EXT HEIGHT	FRESH WATER	GREY/BLACK
T231BHXL	652	5,068	2,584	27' 6"	10' 5"	56 gal	30/30
T231RKXL	433	4,473	2,922	27' 11"	10' 3"	56 gal	60/28
T241QBXL	492	4,198	3,256	26' 4"	10' 3"	56 gal	28/30
T252RLXL	686	5,590	2,058	30' 2"	10' 5"	56 gal	30/28
T261BHXL	434	4,314	3,082	29' 1"	10' 3"	56 gal	28/30
T262BHXL	639	5,631	1,970	31' 2"	10' 5"	56 gal	65/30
T272QBXL	735	5,859	1,838	32' 8"	10' 5"	56 gal	35/30
T281QBXL	649	5,438	2,173	32' 6"	10' 5"	56 gal	28/30

Cargo Carrying Capacity does not include the weight of water, fluids, or all popular options. Weights and capacities are approximate, the addition of optional equipment will increase the overall weight.

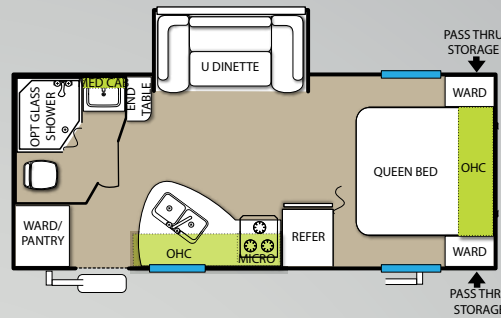
# Features

- 6'-8" Interior Height
- Range W/ Oven IPO Cook Top
- Double Door Refer
- Super Lube Axles
- Smooth Metal Front Wrap w/ Rock Guard
- Switch Contol Center
- TV Antenna w/ Booster
- Microwave w/ Carousel
- Water Heater By-Pass (N/A w/ Tankless)
- Radial Tires
- 13.5k Ducted Air Conditioner
- Exterior Marine Speakers
- Designer Bedding
- Wood Plank Lino
- Decorative Curtain Rods w/ Pleated Shades in Living Area
- Retractable Awning
- Safety Glass Black Framed Slider Windows
- Radius Entry Door and Steps
- 30amp Power Cord
- Pass Through Storage (most models)
- Full Extension Ball Bearing Drawer Guides
- 6gal Direct Spark Ignition Gas/Electric Water Heater
- Foot Flush Toilet
- DVD, MP3, CD, FM Stereo
- Self Adjusting Brakes
- 56gal Fresh Water Capacity
- Outside Kitchen (T32BHDS)
- Glass Shower Door (With Neo Angle Shower)

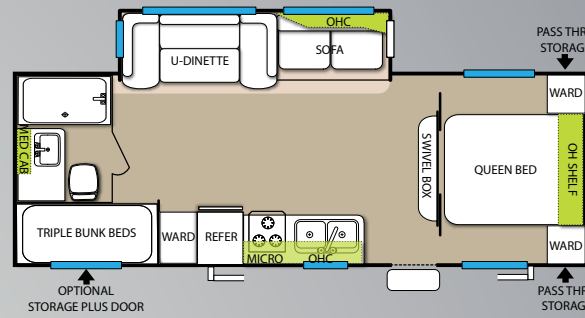
# Options

- Spare Tire & Carrier w/ Cover
- 15k Ducted Air Conditioning
- Stabilizer Jacks
- Power Tongue Jack
- Electric Awning
- Roof Ladder
- Skylight Over Tub
- Black Tank Flush
- 30# LP Bottles
- Cable / Satellite TV Ready
- 160W Solar Panel w/ Regulator
- Climate A Package (Radiant Foil & 12v Heat Strips)
- Storage Plus Door (Per Floor Plan)
- Tankless Water Heater

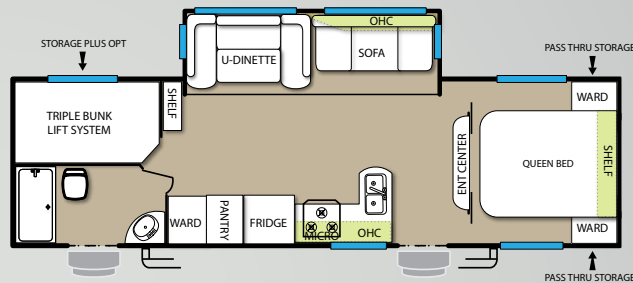
**T21RBS**



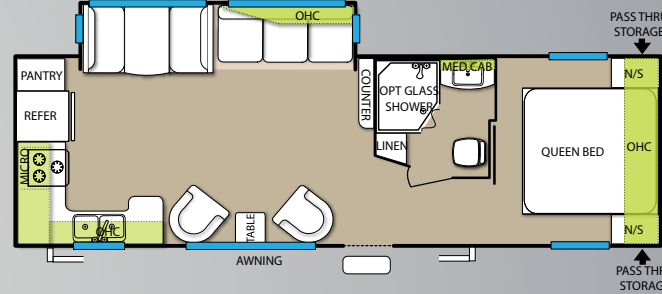
**T26TBUD**



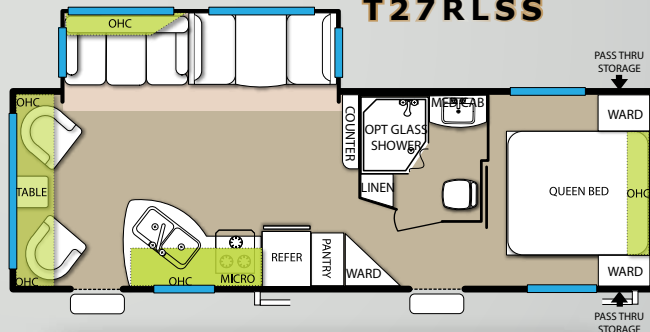
**T27TDSS**



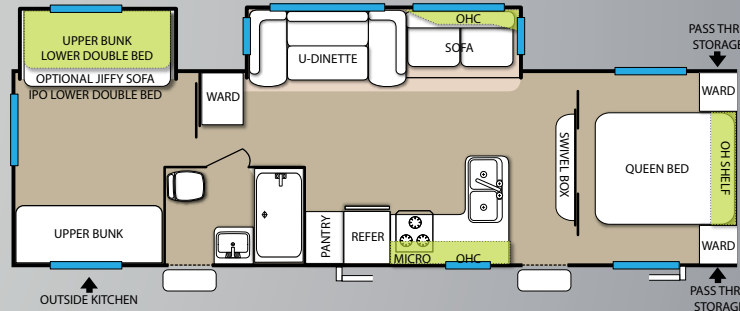
**T27RKSS**



**T27RLSS**



**T32BHDS**



## Conventional Specs

MODEL	HITCH WEIGHT	DRY WEIGHT	CCC	EXT LENGTH	EXT HEIGHT	FRESH WATER	GREY/BLACK
T21RBS	504 lbs	4,490 lbs	2,976 lbs	24' 8"	10' 10"	56 gal	28/32 gal
T26TBUD	815 lbs	5,740 lbs	2,047 lbs	28' 8"	11' 2"	56 gal	34/32 gal
T27TDSS	805 lbs	6,624 lbs	3,337 lbs	29' 6"	11' 2"	56 gal	75/40 gal
T27RKSS	720 lbs	6,355 lbs	1,327 lbs	33' 3"	11' 2"	56 gal	69/32 gal
T27RLSS	650 lbs	6,330 lbs	2,637 lbs	32' 2"	10' 11"	56 gal	69/35 gal
T32BHDS	859 lbs	7,955 lbs	3,026 lb	35' 8"	11' 2"	56 gal	66/32 gal

Cargo Carrying Capacity does not include the weight of water, fluids, or all popular options. Weights and capacities are approximate, the addition of optional equipment will increase the overall weight.



**Dealer**



A Berkshire Hathaway company.

**FOREST RIVER INC**  
**CALIFORNIA DIVISION**  
**(909) 873 3777**

All illustrations and specifications contained in this literature are based on the latest product information available at time of publications. Forest River Inc. reserves the right to make changes to price, colors, materials, equipment, and specifications at any time without notice and assumes no responsibility for any error in this literature.