

DISCOVERY 2014

DISCOVERY® |



FLEETWOOD RV

## THE JOY OF TRAVEL

When it comes to traveling, some will, some won't, and some make sure they do it right. With contemporary charm and a commanding presence, your Discovery is the envy of the entire camp. Traveling in a Discovery is a celebration, and everyone wants to join the excitement.



DISCOVERY 40G SHOWN IN AUTUMN PECAN INTERIOR DÉCOR WITH SPICE WOOD CABINERY



## WHY BUY DISCOVERY?

**Step Up to Luxury** Discovery is the brand so many motorhome owners aspire to own. Its power and luxury is truly impressive.

**Unmistakable Quality** Discovery owners have high expectations, and Discovery does not disappoint. The exceptional quality of the components is consistent throughout.

**Space for Entertaining** The more the merrier, with a galley suitable for preparing big meals, countertop space for party trays and drinks, and plenty of room for guests.

**Luxurious Bed and Bath** The oversized bedroom suite is built for relaxation, with fine amenities and ample space to spread out.



# 2014 GRAPHICS AND DÉCOR



Both inside and out, we offer a wide selection of colors, styles and finishes. From the moment you lay your eyes on a Fleetwood RV, the high-style graphics and décor collection welcome you with gracious beauty and contemporary design. We've paid attention to every detail. So wherever you are, you'll feel right at home.



AUTUMN PECAN



MADISON MIDNIGHT



VINTAGE STONE

	AUTUMN PECAN	MADISON MIDNIGHT	VINTAGE STONE		CABINETRY
SOFA				CINNABAR	
ACCENT					
BEDSPREAD				SPICE	
COUNTERTOP					
FLOORING					
CARPET					

# STANDARD FEATURES AND OPTIONS

## INTERIOR THROUGHOUT

- 20,000/25,000 BTU Dual Furnaces (36J, 40G)
  - 20,000/30,000 BTU Dual Furnaces (40X)
  - 25,000/34,000 BTU Dual Furnaces (40E)
  - 84" Interior Ceiling Height
  - Complete PEX Plumbing System
  - Crown Molding w/Decorative Corner Caps
  - Manual Double Roller Shades
  - Deluxe Roller Bearing, Full-Extension Drawer Guides & Transit-Ship Locks
  - Fan-Tastic™ Power Roof Vent w/Wall Switch
  - Solid-Surface Entry-Step w/LED Accent Lights & Cover
  - Demand Water Pump w/Filter
  - Dual Roof-Mounted, High-Efficiency A/C w/Solar Panel, Chill Grills & Bedroom Heat Pump
  - Solid Wood Face Frame Cabinets
  - Hardwood Cabinet Doors/Drawers
  - Stackable Washer & Dryer
  - Wall Sconces (Living Area)
  - Wall Switches (Includes Switches for Ceiling Lights & Vents)
  - Water Heater Bypass
  - Whole-Coach Water Filtration System
  - Wood Finish Return Air Intake for Furnace
  - Central Vacuum System
  - Water Heater 16-Gallon Output
- Optional*
- CSA Package (Canadian Specs)\*\*

## DRIVER CONVENIENCE

- Adjustable 3-Point Seatbelts at Driver & Front Passenger Seats (w/Adjustable Shoulder Straps)
- Smart Wheel
- Automotive Wrap-Around Dash
- Driver Left-Console
- Dual Dash Touch Screen Radio w/Built-In GPS Monitors
- Heated Chrome Power Exterior Mirrors w/Turn Signals & Sideview Cameras
- Auxiliary Start Circuit
- Battery Disconnect System
- Cruise Control
- Front Power Roller Shades/Blinds
- Manual Driver & Passenger Roller Shades/Blinds
- Villa® Driver Passenger Soft-Touch Captain's Chairs w/Reclining Back & 6-Way Power Controls
- Denso® High-Output Auto A/C Heater Combo
- Passenger Armrest w/Easy-Access Battery Disconnect Switch
- Radio Switch
- Main/Auxiliary Power
- Tilt/Telescoping Steering Wheel
- 110-Volt Power Outlet at Dash
- (2) 12-Volt Power Outlets at Dash
- Power Entry Step Cover
- Power Passenger Seat Footrest
- USB Charger (Driver-Side)

## GALLEY

- Convection Stainless Steel Microwave Oven w/Built-in Range Hood & Light
  - 3-Burner, High-Output Cooktop w/Sealed Burners
  - Adjustable Cabinet Shelves (Select Cabinets)
  - Flip-Up Counter Extension (36J)
  - Dometic® 12.2 cu.ft. 4-Door Refrigerator w/Icemaker & Water Dispenser
  - Galley Faucet w/Pullout Sprayer
  - Dinette Base Cabinet with Free-Standing Chairs
  - Polished Solid-Surface Countertop w/Sink & Range Covers
  - Under-Galley Shelving & Wastebasket
  - Window Over Sink (40E, 40G, 40X)
  - Solid-Surface Dinette Tabletop
- Optional*
- 3-Burner, High-Output Cooktop w/Sealed Burners & Oven Refrigerator
  - Dishwasher
  - 22 cu. ft. Residential Refrigerator w/Two Additional Batteries & 2800 watt Inverter

## LIVING ROOM

- Sony 40" LED HDTV(36J, 40G)
  - Sony 46" LED HDTV (40E)
  - Sony 50" LED HDTV (40X)
  - Sony 5.1 Home Theater System w/Built-in AM/FM/DVD & Surround Sound Speakers
  - Villa® Residential Seat Styling
  - TV Antenna
  - Wall-to-Wall High Gloss Porcelain Flooring
- Optional*
- Sony 32" LED HDTV in Front Overhead
  - Villa Booth Facing Dinette
  - U-Shaped Dinette/Sofa (36J, 40G, 40X)
  - U-Shaped Dinette/Dual FS Recliners (40X)
  - Expandable L-Sofa (40X)
  - Satellite Radio (Subscription Required)

## BEDROOM

- King Dream Easy Memory Foam Mattress
  - Sony 32" LED HDTV
  - Slide-Out Features
  - Overhead Cabinets
  - Bedspread w/Décor Pillows
  - Coffered Ceiling
  - Remote Generator Start Switch
  - Rear Wardrobe w/Cedar Lining, Carpeted Floor & Wire Organizer
  - Wardrobe Lighting
  - Plush Wall-to-Wall Carpet w/Carpet Pad in Bedroom
- Optional*
- Dresser/Vanity w/Second Sink (40G)
  - King Air Mattress
  - Desk (40G)

## BATHROOM

- A/C Venting
- Cabinet Toe Kicks
- Glass Shower w/Skylight & Low Threshold
- Hardwood Bath Door/Trims
- Porcelain Toilet w/Water Saver
- Tecma® Silence Plus 2-Button Porcelain Vacuum Flush Toilet (40E - Rear Bathroom)
- Halogen Lighting Over Sink

## SAFETY/CONVENIENCE (INTERIOR)

- Carbon Monoxide Detector/Alarm
- Energy Management System (EMS) w/Soft Start
- Central Electrical Panel
- Fire Extinguisher
- Multiple Seatbelt Locations
- Propane Detector/Alarm
- Smoke Detector/Alarm
- Neutral Loss Protection Standard

## EXTERIOR THROUGHOUT

- 120V/12V AC/DC Converter
- 2,000-Watt Pure Sine Wave Inverter w/Remote
- 4-Point Automatic Levelers
- 50-Amp Service
- 8.0 KW Onan™ Quiet Diesel Generator
- Manual Generator Slide
- Awning Rail/Drip Molding
- Dishwasher
- 22 cu. ft. Residential Refrigerator w/Two Additional Batteries & 2800 watt Inverter
- Fiberglass Wheel Well Trims
- Full-Body Paint w/Color & Graphics -3 Choices
- Weather Pro Power Awnings (Patio Awning Includes Wind Sensor)
- Fiberglass Front/Rear Caps w/High-Mounted Taillights
- Water Pump Switch (Multiple Locations)
- Rear Rockguard

## EXTERIOR THROUGHOUT (CONTINUED)

- Optional*
- Exterior Entertainment Center w/Sony® 32" LED HDTV and High Output, Splashproof AM/FM/DVD Sound System
  - Solar Electric Panel
  - 1st Full Bay 90" Slide Tray
  - 1st Full Bay 36"/54" Slide Trays
  - 2nd Full Bay 90" Slide Tray
  - 2nd Full Bay 36"/54" Slide Trays
  - DSS Auto-Locating In Motion Satellite Dish
  - 3rd Roof A/C (40G, 40X,40E)
  - Exterior Pull Out Grill & Kitchenette (36J, 40G, 40X)
  - Satellite Dish Winegard Stationary
  - Window Awning Package
  - Rear Ladder

## AUTOMOTIVE

- Aluminum Wheels
- Fog Lamps
- Mud Flaps
- Color Rear & Side Vision Camera System
- Remote Keyless Entry
- Windshield Wipers w/Wet Arm
- Underhood Utility Light
- Large One-Piece Bonded-in Windshield
- Protective Front Mask

## SAFETY/CONVENIENCE (EXTERIOR)

- 20' Sewer Hose
- ABS Brakes
- Automotive Safety Glass
- Daytime Running Lights
- Easy Sweep Flooring at Entry Step
- Entry Door w/Screen Door & Deadbolt Lock
- Four 6V/Deep-Cycle House Batteries
- Lighted Entry Assist Handle
- Power Entry Step
- Porch Light
- Black Tank San-T-Flush™ System
- Touch Sensor Tank Monitoring System
- Utility Compartment w/Exterior Shower
- Rear Side Marker Lights
- Automatic Generator Start System

## STORAGE

- Continuous One-Piece Compartment Bulb Seal
- Pass-Through Storage
- Large Lighted Roto- Molded Polyethylene Compartments
- Side Swing, Insulated Aluminum Luggage Doors w/ Single Paddle Latch & Corrosion Resistant Steel Hinges

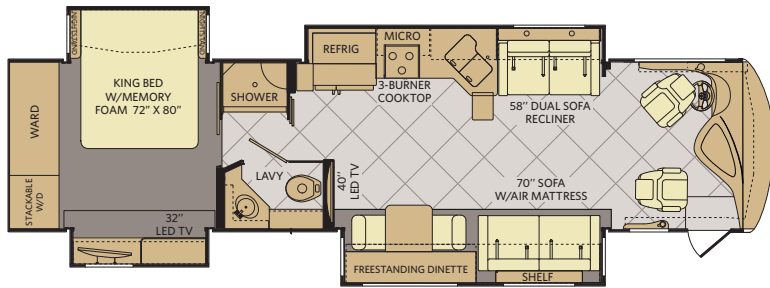
## BODY STRUCTURE

- Aluminum Interlocking Floor/Wall/Ceiling Framing
- Molded Fiberglass Radius Roof w/Ducted A/C
- Heated Water & Holding Tank Compartments
- Quiet Cool Ducted A/C
- Vacu-Bond® Upper/Lower Floor, Walls & Ceilings
- Power Bridge® Chassis Construction

\*Not all options are available on all floor plans. See your Fleetwood dealer for details.  
\*\*CSA standards may require substitution or deletion to achieve conformance.

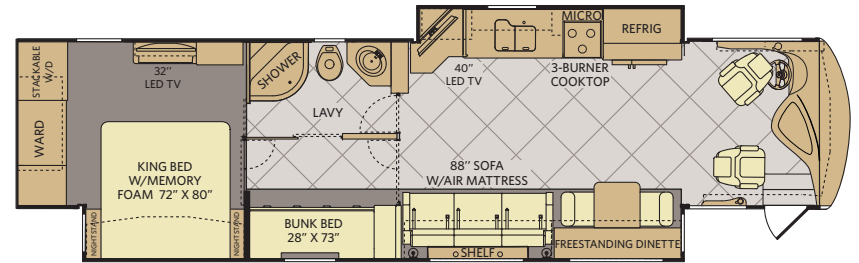
# DISCOVERY FLOOR PLANS

36J



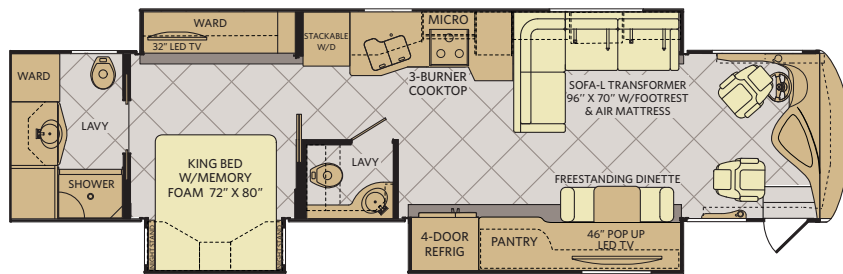
Available options: 087, 093, 107, 113, 144, 635, 830, 856

40G



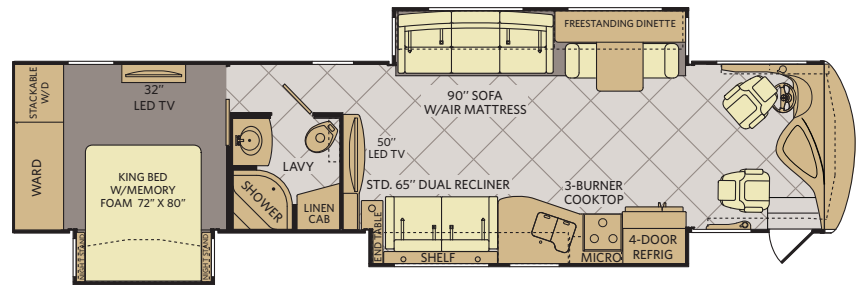
Available options: 087, 093, 107, 113, 144, 635, 830, 856, 867, 878

40E



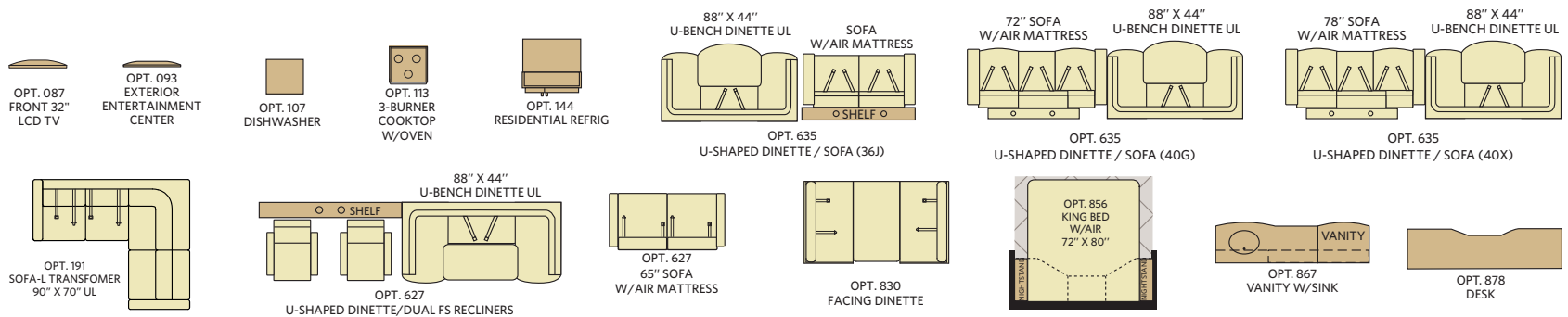
Available options: 087, 093, 107, 113, 144, 856

40X



Available options: 087, 093, 107, 113, 144, 191, 627, 635, 830, 856

## FLOOR PLAN OPTIONS



# WEIGHTS & MEASUREMENTS

CHASSIS	POWER BRIDGE®			
	36J	40G	40X	40E
<b>MODELS</b>				
Wheelbase (inches)	228"	276"	276"	276"
GVWR (lbs) <sup>1</sup>	33,400	33,400	33,400	33,400
Front GAWR (lbs) <sup>2</sup>	12,400	12,400	12,400	12,400
Tag Axle GAWR	N/A	N/A	N/A	N/A
Rear GAWR (lbs) <sup>2</sup>	21,000	21,000	21,000	21,000
GCWR (lbs) <sup>3</sup>	43,400	43,400	43,400	43,400
Hitch Rating Weight (lbs) <sup>1</sup>	7,500	10,000	10,000	10,000
Tongue Weight (lbs) <sup>7</sup>	750	1,000	1,000	1,000
Fuel Capacity (gal)	100	100	100	100

## POWER BRIDGE® CHASSIS

**Model:** Freightliner® XCM Series  
**Engine:** Cummins® 9L ISL  
**Transmission:** Allison® 3000 MH 6-Speed  
 w/Electronic Shifter

**Alternator:** Delco Remy 160 Amp  
**Torque:** 1,150 lb-ft @ 1,400 RPM  
**Horsepower:** 380HP

## DIMENSIONS & CAPACITIES

MODELS	36J	40G	40X	40E
Overall Length (inches) <sup>4</sup>	37' 4"	41' 4"	41' 4"	41' 4"
Overall Height (with A/C)	12' 10"	12' 10"	12' 10"	12' 10"
Overall Width (maximum) <sup>5,6</sup>	102"	102"	102"	102"
Interior Height (maximum)	84"	84"	84"	84"
Interior Width (maximum)	96"	96"	96"	96"
Interior Storage (cu. ft.)	215	166	197	197
Exterior Storage (cu. ft.)	140	208	208	208
Fresh Water Holding Tank (gal)	100	100	100	100
Grey Water Holding Tank (gal)	75	75	75	75
Black Water Holding Tank (gal)	50	50	50	50
Appliance Propane Tank (gal) (WC) <sup>7</sup>	38.7	38.7	38.7	38.7
Water Heater Tank (gal)	10	10	10	10

## ADDENDUMS

- GVWR (Gross Vehicle Weight Rating) is the maximum permissible weight of this fully loaded motorhome. The GVWR is equal to or greater than the sum of the (UVW) unloaded vehicle weight plus the (OCCC) occupant cargo-carrying capacity.<sup>7</sup>
  - GAWR (Gross Axle Weight Rating) is the maximum permissible loaded weight a specific axle is designed to carry.
  - GCWR (Gross Combined Weight Rating) is the value specified by the motorhome manufacturer as the maximum allowable loaded weight of this motorhome with its towed vehicle. Towing and braking capacities may be different. Refer to Fleetwood and chassis manufacturer's manuals for complete information.
  - Length measured from front bumper to rear bumper (excludes accessories).
  - Excludes safety equipment and awnings.
  - Motorhomes feature a body width over 96" which will restrict your access to certain roads. Before purchasing, you should research any state and/or province road laws which may affect your usage.
  - Tank manufacturer's listed water capacity (WC). Actual propane capacity is 80% of water listing as required by the safety code.
- † The chassis manufacturer recommends the installation of a supplemental brake control system to activate the brakes on the vehicle or trailer you are towing. Hitch receiver ratings expressed are maximum for the hitch receiver installed and may require the purchase of additional equipment that is dependent on the weight of the towed load. Consult with hitch receiver manufacturer for further information.
- †† Minimum Towable Load is the available weight, up to GCWR, when the coach is fully loaded to maximum GVWR. However, if the coach is loaded to something less than maximum GVWR, that extra available weight can be added to your Towable Load. For example, if your coach is loaded to 1000lbs less than maximum GVWR, your Towable Load increases accordingly.
- \* UVW and OCCC are found on the label containing the federal certification tag in each RV.

**IMPORTANT—PLEASE READ:** Product information, photography and illustrations included in this publication were as accurate as possible at the time of printing. For further product information and changes, please visit our website at [www.fleetwoodrv.com](http://www.fleetwoodrv.com) or contact your local Fleetwood RV dealer. Prices, materials, design and specifications are subject to change without notice. All weights, fuel, liquid capacities and dimensions are approximate. Fleetwood RV has designed its recreational vehicles to provide a variety of uses for its customers. Each vehicle features optimal seating, sleeping, storage and fluid capacities. The user is responsible for selecting the proper combination of loads (i.e., occupants, equipment, fluids, cargo, etc.) to ensure that the vehicle's capacities are not exceeded.



## WHY FLEETWOOD RV?



### Quality

There's no cutting corners. Skilled craftsmen build every Fleetwood RV for maximum durability and longevity.



### Trust

More people trust Fleetwood RV. After all, we've spent over 60 years perfecting RVs, earning the loyalty of generations of RVers.



### Passion

We're truly passionate about the RV lifestyle. Fleetwood RV was founded by RV enthusiasts, and that tradition continues today.



### Safety

You've got precious cargo. So we've engineered dozens of innovative safety features into our motor homes to give you more peace of mind.



### Service

Help is nearby with 24/7 emergency Fleetwood RV Trusted Roadside Assistance\*. And when you need an upgrade or repair, you'll find Fleetwood RV dealers all across North America ready to assist you.



### Warranty

Exclusive RV OwnerCare warranty. See your Fleetwood RV dealer for details.

\* All 2014 Fleetwood RV motorhomes include a 1-year emergency roadside assistance membership. For complete info, see your Fleetwood RV dealer.

\*\*For complete info, see your Fleetwood RV dealer.



Visit [FleetwoodRV.com](http://FleetwoodRV.com) or find Fleetwood RV Tablet apps in the App Store or Google Play.

### RV OWNERCARE\*\*

Limited one-year/15,000-mile coach warranty and three-year/45,000-mile structural warranty, whichever occurs first, and it is fully transferable for the first 12 months. RV OWNERCARE is one of the RV industry's most comprehensive programs and includes systems, appliances, components and construction, with no deductible and no service charge. RV OWNERCARE coverage is provided by a company that will be around in the future to service your needs. See your nearest Fleetwood RV dealer for a full explanation of benefits and restrictions.

### CONTACT US

To locate a dealer near you, visit our website at [www.fleetwoodrv.com](http://www.fleetwoodrv.com) or call 1-800-322-8216. We can also be contacted at Fleetwood RV Customer Relations, P.O. Box 1007, Decatur, IN 46733.

### FLEETWOOD MOTORHOME ASSOCIATION

As a Fleetwood RV owner, you're invited to become a member of the Fleetwood Motor Home Association (FMA). Becoming a member is the perfect way to meet other Fleetwood owners who love to travel across American and share in the RV lifestyle. Visit the FMA website at [www.fma4fun.org](http://www.fma4fun.org) to learn more and join the fun.



ALLIED SPECIALTY VEHICLES

FLEETWOOD RV IS AN ALLIED SPECIALTY VEHICLE COMPANY.

### YOUR LOCAL FLEETWOOD RV DEALER IS:

©2013. Fleetwood RV, Inc.  
Printed in the USA. Inventory Control Number DIS14B1, 08/13.  
Model Year 2014, First Edition.