

ENCOUNTER

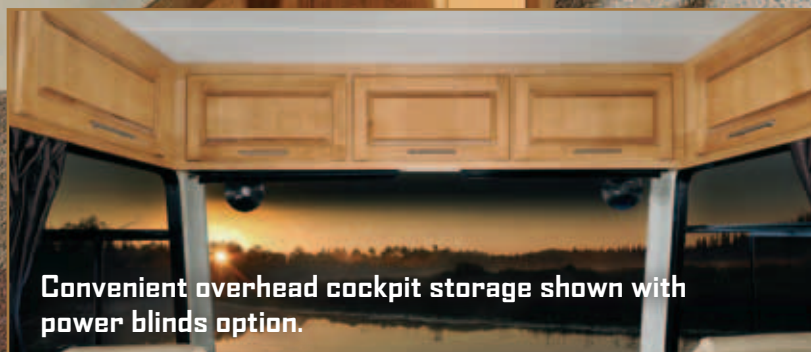


Brings Styling and Elegance to the Road

For Styling and elegance, the all new Coachmen Encounter Class A gas motorhome easily satisfies the palate of the most sophisticated buyer. The Encounter provides some of the smartest, most versatile and functional floorplans in its class. Your encounter with the Encounter will leave a favorable lasting impression!

You will be delighted to own the all new Encounter with its long list of key features. The custom full body paint scheme is accented with 22.5 aluminum rims and the aluminum side-hinged compartment doors, designed for easy use. Inside the coach, the standard Corian kitchen countertop is complimented with a matching Corian backsplash and is highlighted by the recessed halogen lighting mounted in the vinyl soft touch ceiling.

Standard 32" TV and Fireplace
(Pictured in 36KS)



Convenient overhead cockpit storage shown with power blinds option.



The all new "Chalet Interior Upgrade Package" option will add even more styling and elegance with the brightly polished ceramic tile, upgraded Corian kitchen counter and ceramic tile backsplash, stainless steel appliances, and the custom-designed Roman Shades in the living area. Also included in this package is a 24" LCD television in the bedroom.



The Touch of Quality &



Encounter's decors feature among many things the highly touted upgraded Chalet package option, including solid hardwood cabinet doors, ball bearing drawer guides throughout, upgraded Corian kitchen counters with ceramic tile backsplash.



Whether it's your vacation home or something more, the Encounter surrounds you with amenities designed to enhance every aspect of your motorhome experience.



Ever seen a kitchen this spacious in a motor coach? Didn't think so. The graceful lines and designer hardware accentuate the galley's more practical features, like the 30" residential microwave, double-door refrigerator, space-saving flush-mounted range, and flush-mounted sink. Residential tapestry and roman shades are included with the Chalet package.



Elegance, Made For You.



Under-Bed Storage

For viewing pleasure, all Encounters have a 32" LCD TV in the living room and a LCD TV in the bedroom standard (side hinged for added storage).



(36KS Model)



◀ The Encounter's bedroom features abundant storage.

▲ Soft Touch Sofa with air mattress / hide-a-bed.

ENCOUNTER PAINT SCHEMES



Mocha Cream Full Paint



Desert Night Full Paint



The large, one-piece windshield plus the exclusive Sight Rite™ dash — that angles downward — provide a clear, unobstructed view of the road. Also, the easy-to-read gauges and handy controls create an intelligent, driver-friendly environment.



Coachmen®

A division of Forest River, Inc.

STANDARD FEATURES

EXTERIOR/CONSTRUCTION

- Tilt Steering Wheel
- Cruise Control
- Intermittent Wipers
- High Gloss Exterior Walls
- 22.5 Radial Tires
- 22.5 Aluminum Rims
- Rear Mud Flaps
- Power Entrance Step-Double
- Crowned, Laminated TPO Roof
- Full Basement with Pass Through Storage
- Aluminum Side Hinge Trunk Doors
- Fiberglass Front and Rear Caps
- Dead Bolt Lock-Entrance Door
- Radius Entry Door
- Power Patio Awning
- 5,000 lb. Towing Hitch with 7 Way Plug
- Rear Mounted Roof Ladder
- Heated Remote Exterior Mirrors
- Automatic Leveling Jacks
- Slide-Out Room Awnings
- Full Body Paint

INTERIOR AND DECOR

- Padded Vinyl Ceiling
- Milano Marble Wall Board
- Oil Rubbed Bronze Hardware
- Glazed Mullion Panel Cab Doors with Decorative Glass Inserts in Living Area
- Radius Slider Windows with Safety Glass
- Reclining / Swivel Pilot Seats
- Soft Touch Sofa with Air Mattress / Hide-a-bed
- Dream Dinette (NA 36KS, 37TZ)
- Day/Night Shades Coach, Night Shades Bedroom
- Euro Chair (36BH, 37FW Only)
- Ball Bearing Drawer Guides Throughout
- Three Wood Choices
- Radio AM/FM/CD

- Cable TV Jack
- LP Leak Alarm and Smoke Detector
- Carbon Monoxide Detector
- Fire Extinguisher
- Phone Jack
- TV Antenna and Roto Package
- 32" LCD TV Coach with DVD Player
- 19" LCD TV Bedroom
- Electric Fireplace (N/A 37FW)

GALLEY

- 8 Cubic ft. DD Refer
- Single Lever High Kitchen Faucets
- Double Bowl Kitchen Sink with Sink Covers
- Flush Mounted 3-Burner Range with Oven
- 30" DTR Microwave Oven
- Three Speed Power Fan
- Corian Kitchen Counter with Corian Backsplash

SLEEPING

- King Bed 76x80 (NA 36KS)
- Bunk beds (36BH only)
- Privacy Drape-Cab
- Deluxe Innerspring Mattress - 312 Coil with Pillow Top
- Bedspread

BATH AND WATER

- Porcelain Toilet with Foot Flush and Sprayer
- Fiberglass Shower
- Glass Shower Door
- Power Bath Vent
- 10-Gallon Gas/Electric - E.I. Water Heater
- Demand Water Pump
- Skylight Over the Shower
- No Mess Termination with Light, Shower, Pump Switch
- Whole Coach Water Filter (2)

ELECTRIC/HEATING/AC

- Halogen Interior Lighting
- 30'-50 Amp Power Cord
- 55 Amp, 110/12-Volt Power Converter
- GFI Circuit
- Outside Recept (OS)
- Emergency Start Switch
- Lighted Trunk Boxes
- Patio Light
- 35,000 BTU E.I. Furnace
- 13,500 BTU Roof Air Conditioner-Ducted
- 2nd 13,500 BTU Roof AC
- Dual Coach Batteries
- Rearview Camera with Color Monitor
- 6.5 Guardian Generator
- Coach Command Center

OPTIONS

- Exterior TV (NA 36KS)
- Diamond Shield Protection
- Home Theater
- Free Standing Dinette (36BH Only)
- Dual Pane Windows
- 30" DTR Convection Microwave
- Oven and Cooktop
- Side by Side Refer (NA 37TZ)
- Valve Stem Extenders
- DUAL 7" TVs with DVD & Radio-Bunks (36BH only)
- DVD Player In Bedroom
- CSA Upfit
- 5.5 Onan Generator
- Wardrobe IPD Bunks (36 BH Only)
- Side View Cameras
- 6 Way Power Drivers Seat
- Power Sun Visors
- Chalet Upgrade Interior Package: Hardwood Cabinets, Stainless Steel Appliances, Tile Floor, Kitchen Backsplash, 24" Bedroom TV, Upgraded Kitchen Corian Countertops, Roman Shades

ENCOUNTER DECOR WOOD COLORS & INTERIOR PATTERNS



Glazed Brazilian Cherry



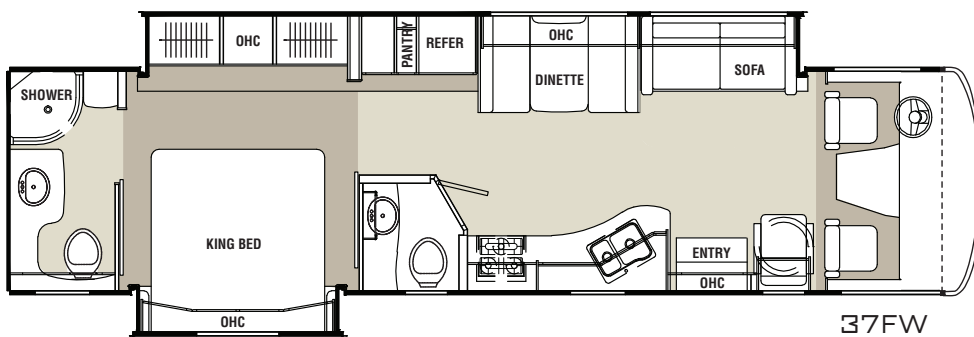
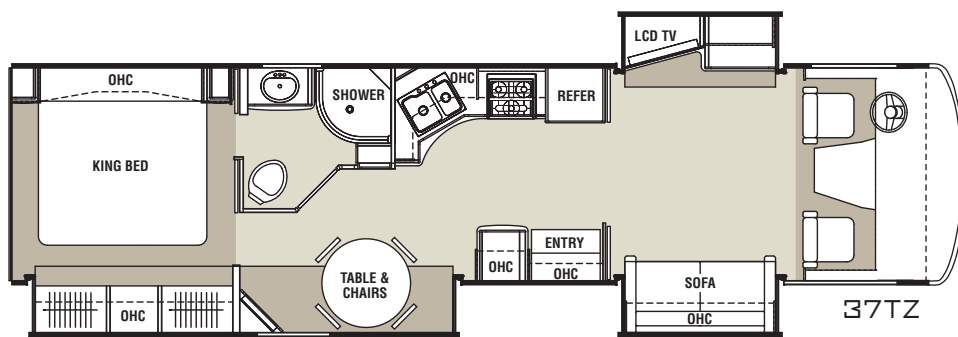
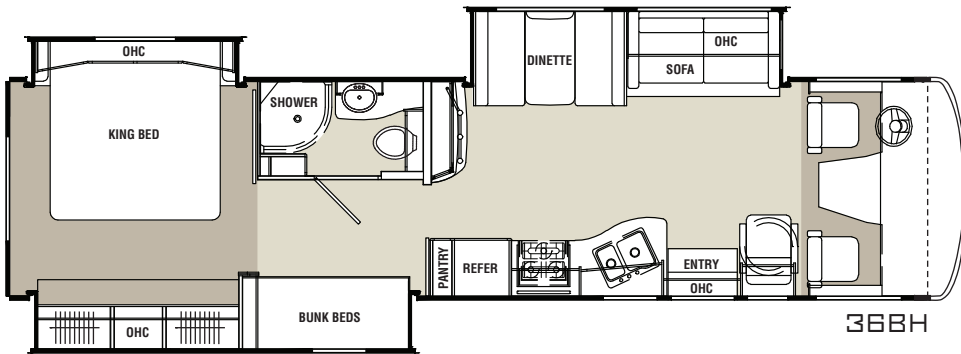
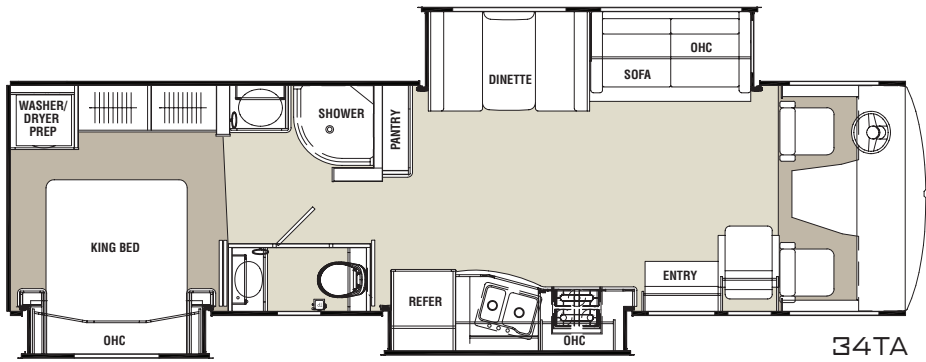
Autumn Maple



Cognac Maple

ENCOUNTER FLOORPLANS

■ Carpet ■ Linoleum



Automatic Leveling Jacks



External shore line and recept.



Exterior generator compartment, shown with optional Onan generator.

| Class A Motorhome | 34TA | 36BH | 36KS | 37FW | 37TZ |
|-------------------|-------------|-------------|-------------|-------------|-------------|
| Wheelbase | 242" | 242" | 242" | 242" | 242" |
| GVWR | 22,000 lbs. | 22,000 lbs. | 22,000 lbs. | 22,000 lbs. | 22,000 lbs. |
| GCWR | 26,000 lbs. | 26,000 lbs. | 26,000 lbs. | 26,000 lbs. | 26,000 lbs. |
| Fuel Capacity | 80 gal. | 80 gal. | 80 gal. | 80 gal. | 80 gal. |
| Exterior Length | 35' | 37' 7" | 37' 7" | 37' 7" | 37' 7" |
| Exterior Height | 12' 3" | 12' 3" | 12' 3" | 12' 3" | 12' 3" |
| Exterior Width | 102" | 102" | 102" | 102" | 102" |
| Fresh Water | 70 gal. | 70 gal. | 70 gal. | 70 gal. | 70 gal. |
| Gray Water | 45 gal. | 45 gal. | 45 gal. | 45 gal. | 45 gal. |
| Black Water | 45 gal. | 45 gal. | 45 gal. | 45 gal. | 45 gal. |
| Awning Size | 18' 0" | 14' 0" | 18' 0" | 17' 0" | 12' 0" |



Forest River, Inc. encourages our customers to purchase their Forest River products from a local dealership whenever possible for the following reasons:

- 1) Forest River, Inc. dealers are independently owned and operated businesses so priority service and scheduling is at their discretion and is often provided to customers that purchased their unit at that dealership.
- 2) Purchasing locally allows customers to establish meaningful relationships with a dealer, enhancing the RV experience through assistance with product questions, user tips or RV regulations for your state or country, and much more!
- 3) Canadian customers must meet requirements to bring an RV purchased out of the country to their home. These requirements may involve additional inspections and certifications, taxes and fees. Your local Canadian Dealer is a professional at meeting these requirements.
- 4) Scheduling timely warranty repairs and adjustments through a local dealership provides far greater flexibility and convenience to you, the customer!

It is the goal of Forest River, Inc. that all of our RV owners fully enjoy the RV experience and that customer satisfaction meets or exceeds their expectations!

FREE One Year Membership - Coachmen Owners Association!



Coachmen is proud to sponsor the largest manufacturer sponsored camping club in North America... Coachmen Owners' Association (COA). COA provides you a world of ways to enjoy your RV. This is FUN ON OVERDRIVE and provides: Free Trip Routing, Exciting Tours & Rallies, Free Campground Directory, Local/State Club Activities, Easy RVing Magazine Free, Theme Park Discounts, Fuel Discounts, Free onebigplanet® Memberships with discounts at 180,000 merchants and Much More! Every new Coachmen RV buyer is eligible for a 1 Year FREE membership in the Coachmen Owners' Association. It all adds up to any easy ownership experience!

Travel Easy™ Roadside Assistance



RVing is easier with Coachmen's Travel Easy™ Roadside Assistance provided FREE the first year of ownership to those who purchase a New Coachmen RV. Administered by Coach-Net, this service provides you with 24/7 operational, technical and emergency road service coverage. Also included is towing, fuel delivery, jump starts, lockout service, tire changes, mobile mechanic and unlimited technical assistance. Anywhere. Anytime. Travel Easy™ is the security of knowing that help is any easy phone call away.

GVWR (Gross Vehicle Weight Rating):

The maximum permissible weight of the unit, including the unloaded vehicle weight (UVW) plus all fluids, cargo, optional equipment and accessories. For safety and product performance, do not exceed the GVWR.

GCWR (Gross Combined Weight Rating):

The maximum total weight of the loaded unit, plus a tow vehicle. This includes the weight of both the unit and tow vehicle, fuel for each, all other fluids, cargo, occupants, optional equipment and accessories.

Important Note: All capacities are approximate, and all dimensions are nominal. Coachmen motorhomes are designed to allow for a wide variety of uses, extended trips with two people or short trips with multiple people. Accordingly, each unit allows ample room for sleeping, seating, fluids and cargo. While the customer is the beneficiary of this design, the customer also bears the responsibility to select the proper

combination of passengers, cargo, load, and tow vehicle without exceeding the chassis weight capabilities. Consumer may need additional braking capacity to tow loads greater than 1,000 pounds.

Seat belts should always be worn for passenger safety. Seat belts are provided at most locations to allow convenience in selecting which seat to occupy. However, it is not intended that all seating positions equipped with a seat belt may be occupied while the vehicle is in motion, without regard to other weight factors.

All Coachmen motorhomes are designed to ensure that the number of passengers allowed while the vehicle is in motion will always at least equal the stated sleeping capacity. Though extra seat belts may be provided, for your safety and the proper operation of your vehicle, limit your passengers to the number allowed by the Net Carrying Capacity of your vehicle.



Coachmen®

A division of Forest River, Inc.

Coachmen RV
423 N. Main St., PO Box 30
Middlebury, IN 46540

To learn more about Coachmen RV and our products and see how Coachmen is making life easier visit, www.coachmenrv.com



Learn More

Scan this barcode using a QR Reader on your smart phone to learn more about Forest River.



A Berkshire Hathaway company.

All information contained in this brochure is believed to be accurate at the time of publication. However, during the model year, it may be necessary to make revisions, and Coachmen reserves the right to make all such changes without notice, including prices, colors, materials, equipment and specifications, as well as the addition of new models and the discontinuance of models shown in this brochure. Therefore, please consult with your Coachmen dealer and confirm the existence of any materials, design or specifications that are material to your purchase decision.