

DYNAMAX 

WE'RE PERFORMANCE DRIVEN



The Ultimate Retreat

Trilogy

At **Dynamax** reaching a higher standard is not an option, it's a tradition

Contents

2-3 Legendary Attention to Detail

Living Area

4-5 The Good Life

6-7 Details Make the Difference

8-9 Interior Spaces

Kitchen

10-11 A Dream Kitchen

12-13 Everything In Its Place

Bedroom

14-15 Rest Easy

16-17 Residential Styling

18-19 Comfort and
Convenience

Floorplans

20 Trilogy 3650 RE, 3650 RL

21 Trilogy 3800 RL, 3850 RL

Standard Features

22-23 Trilogy - The Most
Standard Features
In Its Class

Decor

24-25 Trilogy Decor

Construction

26 Cabinetry – Crafted
to Perfection

27 The Legendary 5-Step
Paint Process

28-29 Trilogy - Rock Solid
From the Inside – Out

30 Solid Roof Construction

31 Aerodynamics and Curb Appeal

Features

32-35 Interior and Exterior Features

From the day the Dynamax brand originated, a progressive vision has set these prestigious recreational vehicles apart. Built to perform at a higher standard of excellence that goes beyond what meets the eye, Dynamax is driven by an unending pursuit for precision and quality inside and out.



Saddle

Standard Fade Paint Scheme



Slate

Standard Fade Paint Scheme

A Recreational Vehicle Designed with **Legendary** Attention to Detail

We specialize in engineering fifth wheels designed to fit your lifestyle.

Over the years, legendary product integrity and customer loyalty have combined to build a powerful brand. At Dynamax there are no corners to cut – only curves. Dynamax delivers with revolutionary radiused sidewalls, eye catching paint schemes and styling that flows. The resulting product is visually appealing and structurally bold, with aerodynamic properties that improve towability for better fuel efficiency.



Platinum
Custom Full Body Paint (Optional)



Cappuccino
Custom Full Body Paint (Optional)





Peppercorn Decor

Take in the great outdoors through these large panoramic windows. Model 3650 RL shown with Sable decor and Cherry overhead cabinets.

The Good Life

Whether you're the owner or a lucky guest, a stay in a Trilogy is an unparalleled experience. From the rich Cherry cabinetry, tasteful fabrics and window treatments, to the mile high ceilings, the feel is refined, yet infinitely comfortable. Welcome to the Trilogy lifestyle – a cohesive blend of sophisticated style and rock solid Dynamax engineering.

Trilogy's 3650 RE living room has an impressive 8' 8" of headroom and is equipped with two 120 Volt roof fans and deluxe carpeting.

Model 3850 RL in Peppercorn decor is shown with Cherry overhead cabinets.



Sable Decor



Peppercorn Decor

Details Make the Difference

Beautiful hardwood cabinetry, amazing storage and push-button convenience are integral design details in every Trilogy Fifth Wheel.

This beautiful solid Cherry hardwood entertainment center with pull-out desk and file cabinet comes equipped with a 55" LED LCD TV, 5.1 Home Theater System with Blu-ray DVD player. (Models 3800 RL, 3850 RL & 3650 RL). A radiant heat fireplace provides warmth and enhances ambience.





The hide-a-bed sofa with air inflation mattress easily converts to an additional sleeping area.



Dinette chairs have additional storage compartments under the seat cushions.



The hardwood dinette table top lifts for storage access and has a flip-up extension to increase dining space.



Carpeted steps lift up for access to convenient storage compartments. (Model 3800 RL)







Peppercorn Decor

Interior Spaces

Clever use of space blended with sumptuous fabrics and furnishings creates an atmosphere of inviting functionality.

This tall living room slide out has large solid Cherry hardwood overhead cabinets, a hardwood dinette table and chairs, a sleeper sofa with an air mattress and panoramic windows with elegant valances and MCD day/night roller shades.



Terra Cotta Decor



Sable Decor



Prepare a delicious meal with this recessed residential cooktop and 30" stainless steel over the range convection microwave oven. A ceramic tile backsplash and LG solid surface countertop complete the contemporary styling.

Hidden waste basket slides out for easy access.

A Dream Kitchen

Imagine a well equipped kitchen where everything is neatly tucked away, yet within easy reach. The Trilogy kitchen is a dream come true.

An easy-to-access Dyson rechargeable vacuum is stowed neatly away on its recharging rack. (Standard)



LG solid surface countertops with waterfall edging

This large, residential recessed stainless steel double bowl sink has a high rise faucet with a pull-out spray head. The cooktop is recessed with removable covers to increase work space.



Trilogy's residential 22.6 cu. ft. stainless steel refrigerator has water and an icemaker in the door.



Solid cherry raised panel cabinet doors open easily for access to lined storage areas. Hidden hinges and residential style brushed nickel hardware add contemporary appeal. (Models 3800 RL and 3850 RL)

Huge pantry shelves are hinged for easy access.



Spacious drawers glide open and close on high quality ball bearing drawer guides.

Everything In Its Place

Thoughtful engineering goes beyond what meets the eye. Dynamax takes extra care to make sure storage is maximized with ergonomics and aesthetics in mind for a kitchen that's as functional as it is beautiful.



The pull-out pantry houses a convenient 110V recept for easy access to small appliances, while preserving counter space. (Models 3650 RE and 3650 RL)

Dynamax engineers have utilized all available space to maximize storage.



Peppercorn



Model 3800 RL bedroom features an additional vanity sink with an LG solid surface countertop and backsplash, a single handle faucet and a mirrored medicine cabinet.

Rest Easy

This spaciouly appointed Model 3800 RL slide out bedroom has a plush king size bed with a Serta mattress and Cherry hardwood nightstand. Slide out windows provide refreshing cross flow ventilation. Storage is enhanced in the generous walk-in closet with a Cherry hardwood dresser and convenient recessed shoe rack.



This ample 28" deep by 60" long shower features an adjustable, removable shower head. The tinted skydome provides natural light and added headroom for taller travelers. (Model 3800 RL)

Trilogy's beautifully crafted vanity with rounded Cherry hardwood fascia and an LG solid surface waterfall edged countertop features plenty of storage space.





Models 3650 RE and 3650 RL master bedroom

Residential Styling

Rich handcrafted Cherry hardwoods, natural lighting, and contemporary styling set the tone for an eventful day. Model 3850 RL's 11' slide out extends 26". The large bathroom is accessible from both the bedroom and hallway and boasts a large 34" round fiberglass shower with a tinted sky dome, an LG solid surface sink and countertop.

Impressive Cherry hardwood storage cabinets with a convenient pull-out hamper make clever use of hallway space. (Model 3850 RL only)



There's even storage in the steps!





Terra Cotta Decor



A well placed corner countertop in the 3850 RL opens to reveal a mirrored storage compartment and can be used as a vanity table or a desk.



Bedroom





Sable Decor



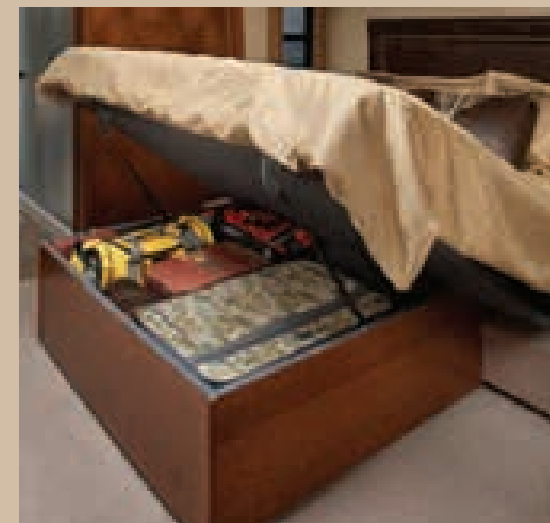
A Cherry hardwood dresser with four drawers and a recessed shoe rack trimmed in cherry keeps things tidy.

Comfort and Convenience

Unwind in this well planned master suite. Elegant fluted glass doors glide open to reveal Trilogy's ample walk-in closet. It's 81" wide, 36" deep and has 70" of headroom.

The bedroom amenities include a cherry hardwood cabinet with a LG solid surface countertop, an overhead cherry cabinet and a 32" LED LCD TV.

The under bed storage compartment lifts easily with gas powered shocks.





Trilogy 3650 RE



Trilogy 3650 RL

Trilogy	3650 RE	3650 RL
Approximate Hitch Weight	2,735 lbs.	2,910 lbs.
Approximate Dry Weight	14,795 lbs.	14,820 lbs.
GVWR (Gross Vehicle Weight Rating)	17,735 lbs.	17,735 lbs.
LP Capacity	117 lbs.	117 lbs.
Water Capacity	64 Gallons	64 Gallons
Water Heater Capacity	12 Gallons	12 Gallons
Grey Water Capacity	90 Gallons	90 Gallons
Black Water Capacity	45 Gallons	45 Gallons
Approximate Overall Height (Top of A/C)	13 ft. 2 in.	13 ft. 2 in.
Axle Size	(2) 8,000 lbs.	(2) 8,000 lbs.
Approximate Overall Length	38 ft. 10 in.	38 ft. 10 in.



Trilogy 3800 RL



Trilogy 3850 RL

Trilogy	3800 RL	3850 RL
Approximate Hitch Weight	2,525 lbs.	2,440 lbs.
Approximate Dry Weight	15,585 lbs.	15,585 lbs.
GVWR (Gross Vehicle Weight Rating)	18,000 lbs.	18,000 lbs.
LP Capacity	117 lbs.	117 lbs.
Water Capacity	64 Gallons	64 Gallons
Water Heater Capacity	12 Gallons	12 Gallons
Grey Water Capacity	90 Gallons	90 Gallons
Black Water Capacity	45 Gallons	45 Gallons
Approximate Overall Height (Top of A/C)	13 ft. 2 in.	13 ft. 2 in.
Axle Size	(2) 8,000 lbs.	(2) 8,000 lbs.
Approximate Overall Length	41 ft. 10 in.	41 ft. 10 in.

The Most Standard Features In It's Class

Dynamax models are loaded with standard features for years of carefree living.

EXTERIOR FEATURES

- LED Running Lights
- Front & Rear Molded Fiberglass Caps

Frame, Hitch & Stabilizing

- 12" I-Beam with Rust Prohibitive Coating
- 6-Point Hydraulic Leveling System
- Air Ride Pin Box by Trailair
- Lighted Entry Steps
- Rear Class One Hitch Receiver

Axles, Tires, & Brakes

- 8,000 lb. Axles with 12" Brakes & Easy Lube Hubs
- Aluminum Wheels
- Goodyear 17.5" H Rated Tires (Models 3800 RL & 3850 RL)
- Goodyear 16" G Rated Tires (Models 3650 RE & 3650 RL)
- Full Size Spare Tire
- Equal-Flex Center Point Suspension by Trailair
- Correct Track Wheel Alignment System

Underbelly

- Seamless Corrugated Underbelly Material
- Fresh, Grey & Black Tanks are Equipped Standard with 12 Volt Heat Pads

Walls & Slides

- Full Body Paint
- Laminated Radius Sidewalls
- Radius Dark Tinted Safety Glass Windows with UVA Inhibitor
- Slider Windows (Where available)
- Dual Pane Windows (Where available)
- 30" Radius Entry Door with Peep Hole & Keyless Entry
- Carefree Slide Topper Awnings with Metal Cover
- Dual Carefree Power Awnings with LED Lighting & Metal Cover (Main & slide)
- Diamond Shield Paint Protection

Floor Construction

- 3-1/4" Laminated Aluminum Floor with Joists (Includes 5/8" hardwood decking)
- Block Foam Insulation

Roof Construction & Features

- 1-1/2" Welded Radius Aluminum Trusses
- Seamless Fiberglass Laminated Radius Roof
- Digital TV Antenna
- Pre-wired for Satellite

Universal Docking Center

- 12 Volt Light
- Black Tank Flush Hook-up
- Shielded RG-6 Coaxial Cable Hook-up
- Satellite Control Panel
- All Tank Pull Handles
- Water Manifold System
- Faucet with Hot & Cold Running Water
- Winterization Valves
- LP Remote Fill & Vent System with On/Off Solenoid Switch

Power

- 90 Amp/12 Volt Power Converter
- 50 AMP Detachable Marine Cord
- Dual Battery Compartment
- 110 Volt Exterior Electrical Receptacle
- 1000 Watt Inverter
- iinc Wireless Remote System (Multifunction touch screen controls awnings, slide outs & leveling system)
- Battery Disconnect

Heating, A/C, Plumbing & Capacities

- Seamless One Piece In-floor Heat Duct
- 40,000 BTU Gas Furnace

- Permanently Mounted 97 Lb. LP Tank
- 20 Lb. Exchangeable LP Tank
- Insulated In-roof Air Conditioning System
- 15,000 BTU A/C Ducted with Heat Pump Living Room
- 13,500 BTU A/C Ducted in Bedroom
- Color-Coded Plumb-PLEX Water Lines with 10/25 Warranty
- Quick & Easy Winterization System
- Polar Package Electric Heat Pads on All Tanks
- 12 Gallon Gas/Electric DSI Water Heater with 16.2 Recovery Rate
- On Demand Shur-Flow Water System

Outside Storage

- Over 250 Cu. Ft. of Basement Storage (Models 3800 RL & 3850 RL)
- Durable Diamond Flooring
- Large Insulated Bus Style Slam Latch Baggage Doors with Locks
- Unobstructed Pass-through Design
- 12 Volt LED Lights
- Cable Hook-Up with 110 Volt Outlet

INTERIOR FEATURES

Living Room

- Dual Deluxe Faux Leather Home-Style Rocker Recliners
- 68" Overstuffed Faux Leather Sofa with Hide-A-Bed Air Mattress (Model 3800 RL & 3850 RL)
- 80" Overstuffed Faux Leather Sofa with Hide-A-Bed Air Mattress (Model 3650 RE & 3650 RL)
- Pull-out Desk
- 36" 110 Volt Ceiling Fan
- Crowned Ceiling with 8'8" of Interior Height
- Crown Molding
- 55" LED LCD High Definition TV
- 1000 Watt Home Theater System with Blu-Ray Player
- Satellite Prep
- Solid Raised Panel Cherry Hardwood Slide Fascia
- Full Length Cabinets in Slide
- 12 Volt LED Lighting
- MCD Pull-down Shades
- Electric Fireplace
- Trackless Carpet with Residential Pad
- Panoramic Windows with Designer Window Treatments

Kitchen

- 22.6 Cubic Feet Frigidaire Stainless Steel Residential Refrigerator with Ice Maker & Water Dispenser
- 30" OTR Convection Microwave Stainless Steel
- High Rise Faucet with Pull-out Sprayer
- Floor to Ceiling Cabinets with Shelves
- Dyson "On Board" Multipurpose Floor Vacuum
- LG Solid Surface Countertops with Waterfall Edge
- Free Standing Drop Leaf Dinette with 4 Chairs
- Mosaic Hand Laid Tile Backsplash
- Built-in Toe Kicks
- Stainless Steel Deep Bowl Kitchen Sink w/LG Solid Surface Covers
- Fantastic Fan w/Control Switch
- Pull-Out Waste Basket
- Designated Pots & Pans Shelf
- 36" 110 Volt Ceiling Fan

Bath

- 6'7" Bathroom Ceiling Height in Center
- 1 Piece Fiberglass Shower with Glass Doors
- Porcelain Toilet
- Fantastic Fan with Control Switch
- LG Solid Surface Sink and Vanity Top with Waterfall Edge
- Domed Skylight Over Shower
- Lighted Steps with Lift-up Storage

Bedroom

- Queen Size Serta Trump Home Edition Pillow Top Mattress
- Lighted, Walk-in, Cedar Lined Closet with Solid Cherry Framed Doors and Fluted Glass Inserts
- 6'7" Bedroom Ceiling Height in Center
- Washer/Dryer Prep
- Cross-flow Ventilation Windows in Bedroom Slide Out (Model 3800 RL)
- LG Solid Surface Vanity with Pull-out Drawers

- Crown Molding
- Pillow Tucked Headboard
- Night Stand with 110 Volt Outlet
- 26" Deep Bedroom Slide
- MCD Pull Down Shades
- 32" LED LCD High Definition TV
- DVD Player
- Satellite Prep
- Designer Comforter with Pillows & Shams
- Lift-up Bed for Additional Storage

Available Options

- Generator Prep
- King Bed ILO Queen Bed
- Four Door RV Refrigerator ILO Residential Refrigerator
- Custom Full Body Paint (Platinum or Cappuccino)

Trilogy Decor

A selection of contemporary fabrics are offered in a choice of three decor packages – all carefully selected to create aesthetic appeal, while complimenting Trilogy's rich Cherry hardwood cabinetry, furnishings and accents.

Terra Cotta



Bedsread and bedroom valance main



Sofa surround and recliners



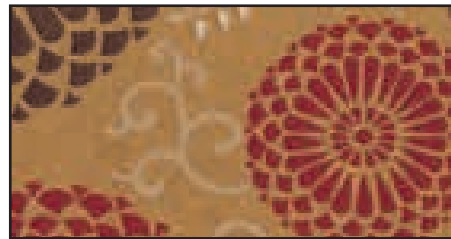
Bedroom valance accent and bedding accent



Sofa cushions



Living Room valance main



Sofa pillows



Living Room valance accent



Dinette chairs

Peppercorn



Bedsread



Sofa surround and recliners



Bedroom valance and bedding accent, living room valance accent



Sofa cushions



Living Room valance main and dinette chairs

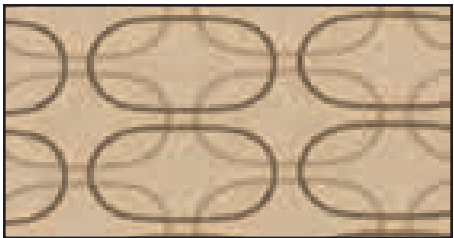


Sofa pillows



Bedroom valance main

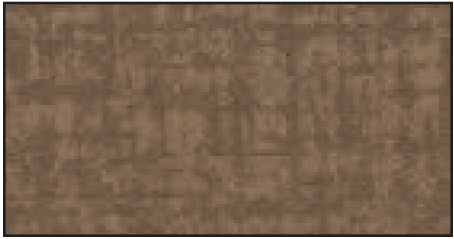
Sable Decor



Bedspread and bedroom valance main



Sofa surround and recliners



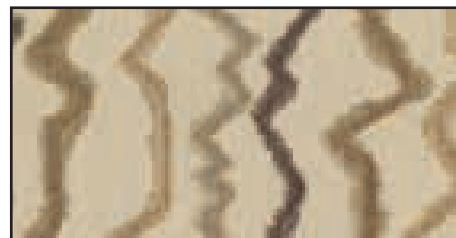
Bedroom valance and accent and living room valance accent



Sofa cushions



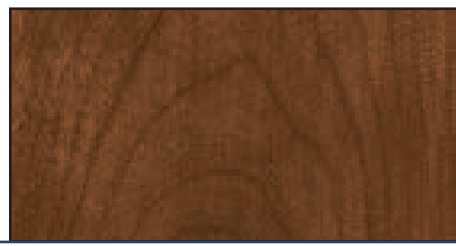
Living room valance main



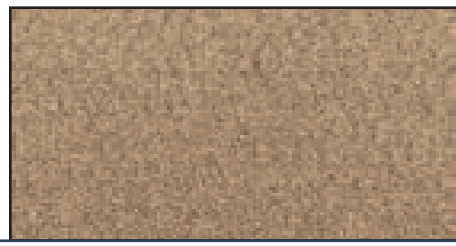
Sofa pillows and dinette chairs

All Trilogy models feature these cabinetry, carpet, wallboard, linoleum and countertop decor treatments

Cabinetry



Carpet



Wallboard



Linoleum

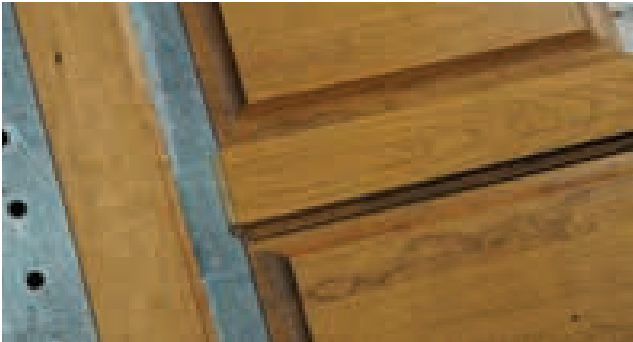


Countertop



Crafted to Perfection

Here's where old world craftsmanship meets cutting edge technology. Dynamax builds with rich natural solid hardwoods to produce the same exceptional cabinet construction found in finer homes.



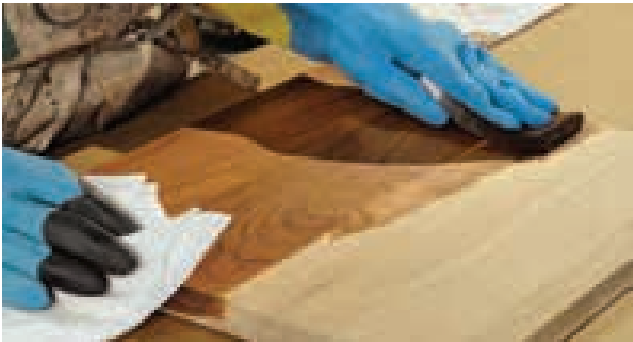
Raised panel door detail



Dovetail construction



Pocket screws for structural integrity



Hand rubbed finishes optimize grain definition



Clear coated natural hardwood doors bring out the luster



CNC routed custom Corian® countertops



Custom louvered doors



Dividing walls and cabinets are reinforced for added strength



Contemporary hardware secures cabinets and drawers

The Legendary 5-Step Paint Process

Making a big statement is all in a day's work for Dynamax paint specialists with three on-site 25' x 65' down draft bake booths. This prestigious 5-step paint process really shines starting with three coats of clear followed with sanding. Then, an additional three coats of clear are applied for a distinctive high-gloss finish. We use BASF paint exclusively.



All Trilogix fifth wheels come standard with full body, four color base coat/clear coat paint schemes.



Logos are applied with the use of digitally plotted spray masks.

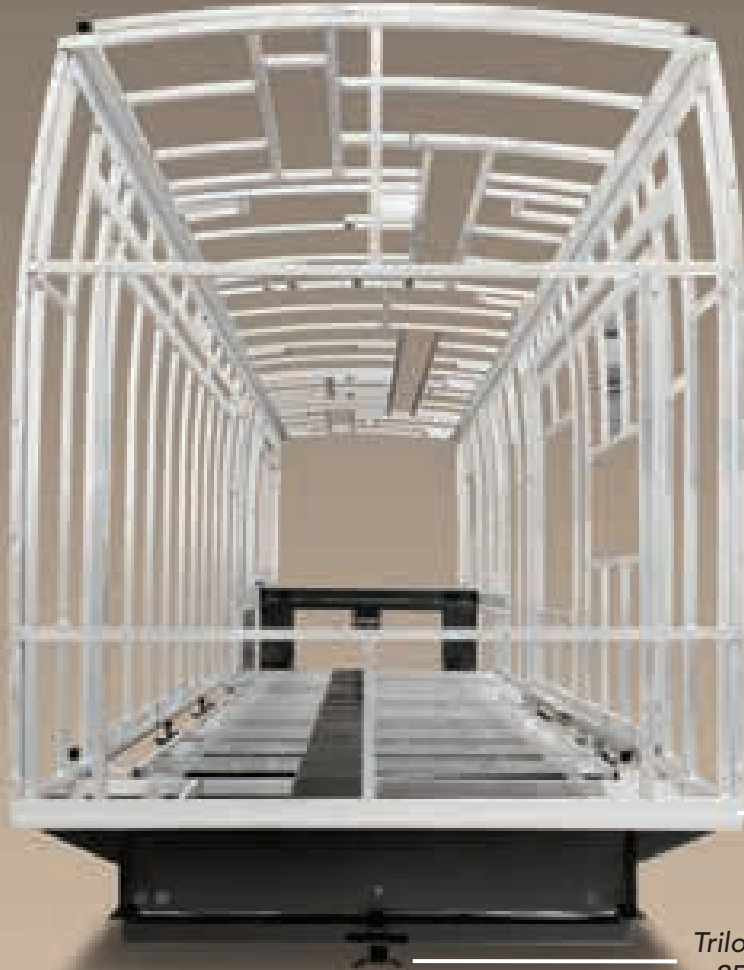


This four color optional Cappuccino custom full body paint scheme with striping continues uninterrupted over the slide outs.



Three coats of clear top the base coat colors and logos. Next, the unit is baked for one hour at over 150°. After sanding, an additional three coats of clear are applied and baked for an outstanding finish.

The rear wall is framed with 1-½" x 1-½" aluminum tubing and 1-½" x 1-½" .055 gauge aluminum P-tube. 1" x 1" solid wood is inserted into the P-tube for enhanced rigidity and improved screw retention.



The roof structure is framed with 1-½" x 1-½" .062 gauge aluminum tubing and 1-½" x 1-½" .055 gauge P-tube. 1" x 1" solid wood is inserted into the P-tube for enhanced rigidity and improved screw retention.

Upper and lower level floor structures are framed with 1" x 2 ½" .040 gauge aluminum tubing.

Trilog's Class 1 receiver has a 250 lb. maximum weight rating – perfect for a bike rack.

Trilog Rock Solid From the Inside – Out

Trilog's construction integrity is durable by design inside and out. Our foundation for success goes beyond what meets the eye – starting with solid aluminum frame construction.





Sidewalls mount to the upper deck with 1-1/2" x 5" .188 gauge aluminum tubing.

Sidewall bows are made of 1-1/2" x 1 1/2" .062 gauge aluminum tube, roll formed into the legendary Dynamax contour.

The upper deck is framed with 2" x 6" 7-gauge steel tubing.

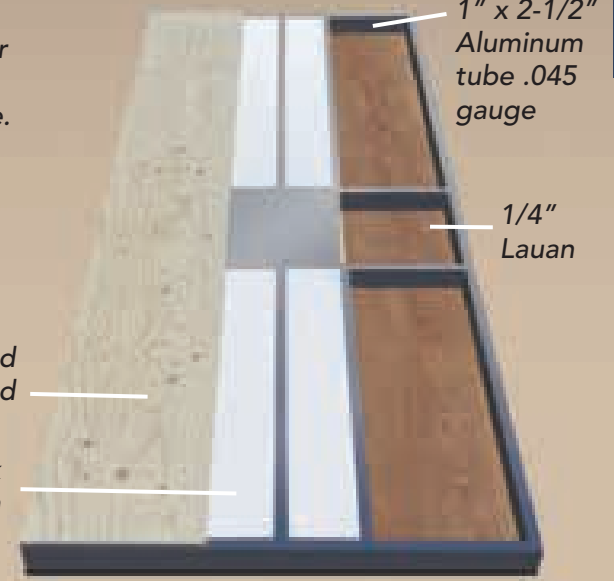
Basement storage is built with an 8" x 10.0 lb. dropped I-beam.

Sidewalls mount to the lower level floor with 1-1/2" x 1-1/2" .055 gauge aluminum P-tube. This process is repeated at the top of the sidewalls when attaching the aluminum caged fiberglass roof.

The main frame is constructed with a 12" x 10.8 lb. I-beam.

6-Point hydraulic leveling jacks are standard. Front landing gear is rated at 14,000 lbs. each with 20" of stroke; rear leveling jacks are rated at 8,000 lbs. with 15" of stroke.

Laminated Floor



1" x 2-1/2" Aluminum tube .045 gauge

1/4" Luan

5/8" Tongue and groove plywood

2-1/2" Solid block foam insulation

Laminated Roof

One-piece Versalit Pebble Flex roof material

1-1/2" Thick solid block foam insulation

1/4" Lauan

3/16" Lauan

Laminated Roof Construction

Trilogy's radiused roof provides added headroom, is strong and enhances water run off.

King Controls JACK Digital HDTV antenna system with a built-in amplifier, SureLock DTV signal meter and full 360° of rotation

Coleman-Mach Low Profile Air Conditioner provides 13,500 BTU cooling

Tinted bathroom Sky Dome provides natural light and extra headroom in the shower

3-Speed Create-A-Breeze Fan-Tastic Vent has a wall control with power lid lift; removable screen for easy cleaning

Coleman-Mach Low Profile Air Conditioner provides 15,000 BTU cooling; 5,600 BTU heating

3-Speed Fan-Tastic Vent has a wall control with power lid lift; removable screen for easy cleaning

UV stabilized Versalit Pebble Flex one-piece, high strength, flexible exterior fiberglass composite roof material; white color reflects heat



Carefree's Ascent slide toppers' weather slats eliminate billowing; there's a removable hinged cover for easy access when cleaning and servicing

TRILOGY
BY DYNALIFE

All Trilogy fifth wheels are rain tested with the slide outs extended and retracted to insure a water tight seal.



Aerodynamics and Curb Appeal

The Trilogy's curved body contours look amazing and channel air flow up and around the fifth wheel cutting through wind, while increasing the tow vehicle's fuel economy and optimizing aerodynamics.

Trilogy's ceiling height is consistent throughout the length of the fifth wheel.





This Seaward Princess Model 3276 3-burner drop-in LP gas stove has a tempered black glass top, electronic ignition and three 7,000 BTU burners.

Features

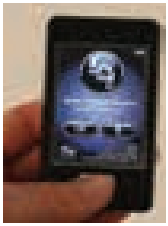
Dynamax models are loaded with standard features for the ultimate in convenience.



MCD *Trilogy is equipped with durable MCD day/night roller shades.*



Stow away large items in this spacious, easy access under bed storage compartment.



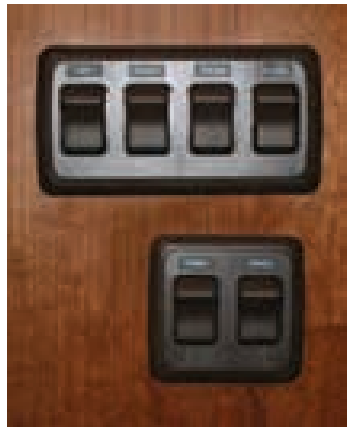
iinc Wireless Remote System (Multifunction touch screen controls awnings, slide outs & leveling system)



This control panel is conveniently located near the entry, hidden behind a raised panel door. Controls: (3) slide out rooms, 1,000 watt inverter, (2) power awnings, monitor panel (LP, fresh, grey & black), water pump, water heater and TV booster.



Cherry hardwood cabinets are felt lined.

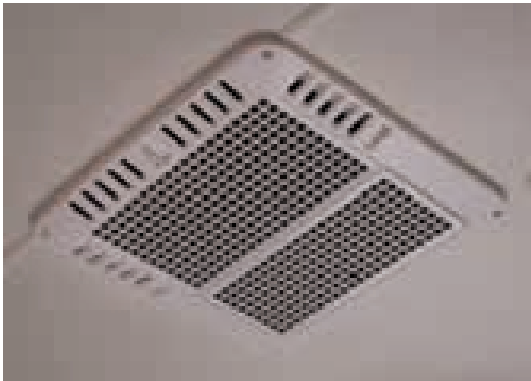


Conveniently placed light switches control individual zones.

Three-speed ceiling fan wall controls.



Dimmer switches selectively control LED lighting zones.



The living area features a 15,000 BTU roof air conditioner with a heat pump and a quick chill grill for rapid cooling.



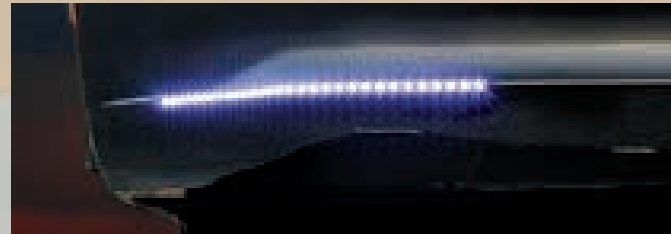
Standard washer/dryer prep



This Fantastic vent fan with a motorized lid is controlled from a convenient wall panel.

Features

Dynamax models are loaded with standard features for years of carefree travel.



Attractive front LED cornering lights accentuate Trilogy's curves for exceptional aesthetic appeal.



Brilliant LED tail lights enhance safety and lower maintenance costs.



This electronic leveling control panel provides a one-touch auto-level feature. When it's time to depart, auto re-hitch memory restores the coach to the unhooked position. To retract, scroll to auto retract, press "enter" and in 20 seconds you're ready to hit the road.



Trilogy is standard equipped with five Goodyear tires. Four are mounted on polished aluminum modular wheels. (Models 3800 RL and 3850 RL have 17.5" H-rated tires; Models 3650 RE and 3650 RL have 16" G-rated tires.)



DIAMOND SHIELD

Diamond Shield protects Trilogy's front lower panel from stone chipping.



A 97 lb. LP tank is securely mounted between frame rails. Fill and vent valves, are accessed in the docking station. Trilogy is also equipped with a 20 lb. exchangeable auxiliary LP tank.



Correct Track allows axles to be aligned for better tread wear and improved fuel economy. Tires run cooler lessening the chance for costly blow outs.



Trailair Air Ride Pin Box acts as a road impact buffer between the tow vehicle and the coach for smoother, more stabilized towing performance. The Trailair coupler's unique scissor action allows the air spring to absorb and dissipate these forces; the shock absorber handles the rebound effect.



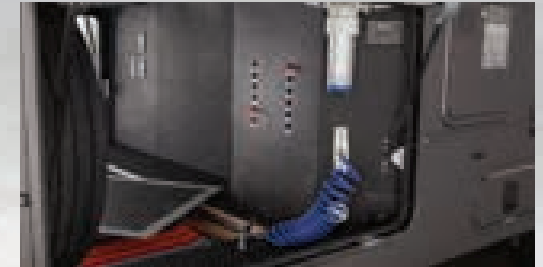
Exterior electrical access



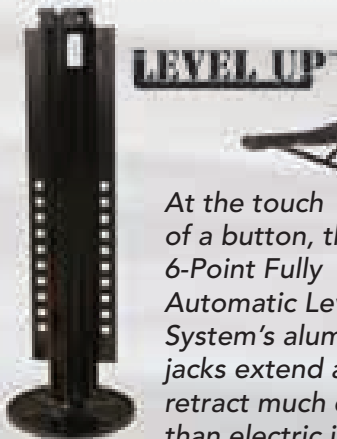
1000 Watt power inverter



The Trilogy is standard equipped with two Carefree of Colorado power awnings with aluminum covers.



Trilogy's basement storage areas total 250 cu. ft. This water manifold controls individual plumbing lines throughout the coach from a single location.



At the touch of a button, this 6-Point Fully Automatic Leveling System's aluminum jacks extend and retract much quicker than electric jacks.



At **Dynamax** reaching a higher standard is not an option, it's a tradition.

Surround yourself in refined luxury. Step up to brilliant Cherry hardwoods, sumptuous upholsteries, contemporary styling and premium appliances. Experience the Dynamax difference – impeccable quality goes beyond what meets the eye. Trilogy is engineered to exceed expectations, enhance your living experience, and is built to last with the most standard features in its class.

24/7 EMERGENCY ROADSIDE ASSISTANCE

For a worry-free ownership experience Forest River includes one year of Coach-Net RV Technical & Roadside Assistance with each RV purchase. Whether new to the RV lifestyle or an experienced RV enthusiast, Forest River owners have 24/7 access to technical, operational and emergency road service coverage throughout the US & Canada. Coach-Net's fast, dependable service is just a phone call away.

Coach-Net®



2745 Northland Dr. ■ Elkhart IN 46515
888-295-7859 ■ www.dynamaxcorp.com



Learn More

Scan this barcode using a QR Reader on your smart phone to learn more about Forest River.



A Berkshire Hathaway company.

Your Authorized Trilogy Dealer



All illustrations and specifications contained in this literature are based on the latest product information at the time of publication. Dynamax reserves the right to make changes in prices, colors, materials, equipment and specifications at anytime, without notice, and assumes no responsibility for any error in this literature. All units are shipped F.O.B. point of manufacture. 11/12 ©2012 Dynamax