

# TRACER

ULTRA LITE



**PRIME TIME**

Manufacturing

*"No Sacrifices"*



**TRACER  
AIR**

**TRACER  
EXECUTIVE**

TRACER TRAVEL TRAILERS  
WWW.PRIMETIMERV.COM





• 3200 BHT Fall River Décor

• 3150 & 3200 Outside Kitchen

***"No Sacrifices!"***

• Tracer Executive Bedroom

At Prime Time, we gave our design team very specific direction when creating Tracer, *"Build a lightweight travel trailer without sacrificing style, comfort, or convenience."* We asked them to, *"Develop floorplans that were user-friendly and desirable, but still easy-to-tow."* We put a stake in the ground and demanded that, *"Tracer Executive have standout features like Lane® Residential Furniture, premium entertainment centers, huge windows, and expanded storage capabilities."* We said, *"Let's break new ground and build an ultralite trailer that exceeds even the most seasoned RV enthusiast expectations."* There was one rule when we designed the Tracer Ultralite - **"No Sacrifices!"**



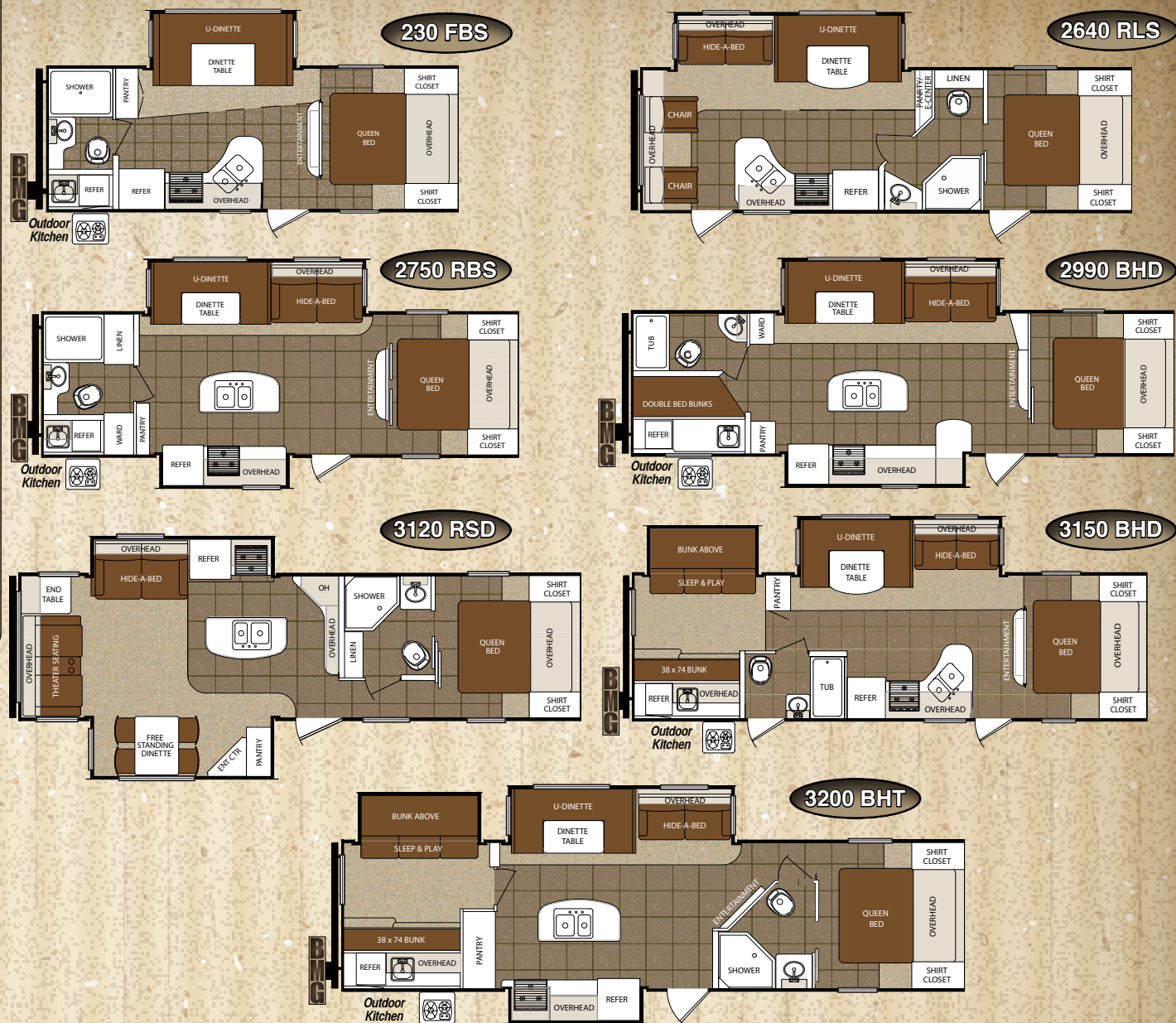






# TRACER EXECUTIVE

The Tracer Executive represents the pinnacle of Ultralite innovation featuring wide open, spacious layouts that are often hundreds of pounds lighter than traditional floorplans. The Executive Series offers premium upgrades like residentially-inspired **Lane®** Furniture, Electric Awning, an LED Television, Slam Baggage doors, and a Universal Docking Center. Now you can have all the features and the floorplan of your choice in a lightweight easy-to-tow Tracer Executive.

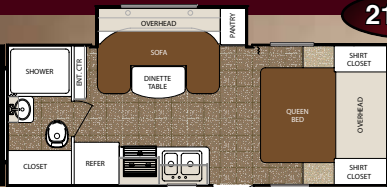


BMG = Bumper Mounted Grill

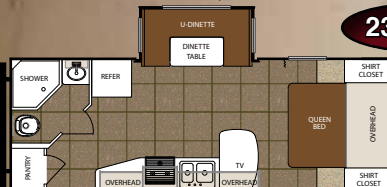
SPECIFICATIONS	230FBS	2640RLS	2750RBS	2990BHD	3120RSD	3150BHD	3200BHT
Length	25' 2"	29' 5"	30' 0"	35' 7"	34' 3"	34' 0"	36' 9"
Height	10' 8"	10' 8"	10' 10"	10' 10"	10' 10"	10' 10"	10' 10"
Hitch	620 lbs.	637 lbs.	675 lbs.	TBD	837 lbs.	687 lbs.	767 lbs.
Ship Weight	4,810 lbs.	5,746 lbs.	6,285 lbs.	6,910 lbs.	7,283 lbs.	6,750 lbs.	7,467 lbs.
Carrying Capacity	2,773 lbs.	1,854 lbs.	1,353 lbs.	2,563 lbs.	2,317 lbs.	2,736 lbs.	2,063 lbs.



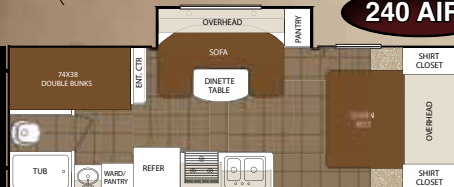
215 AIR



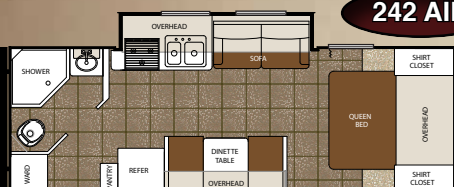
235 AIR



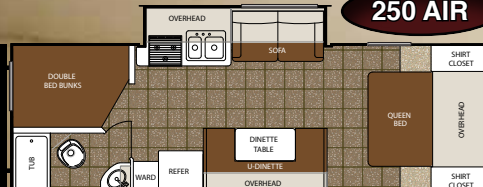
240 AIR



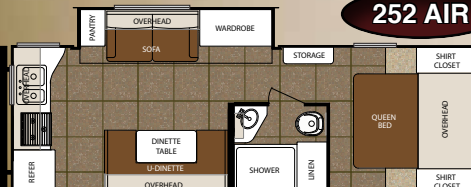
242 AIR



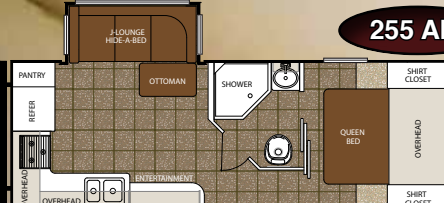
250 AIR



252 AIR



255 AIR



# TRACER AIR

"The philosophy behind Tracer AIR is quite simple: Build an ultra-light travel trailer that is easily towed by many of today's smaller SUVs with all of the features that make camping a great experience. Make it a size that will allow you to go anywhere and everywhere. Make it affordable. Simply put: **NO SACRIFICES.**"

So, allow yourself to peruse our lineup of ultralite, ultra comfortable, ultra towable floorplans, many of which are under 30' and 5,000lbs. We think you'll be as excited as we are. On your next trip, make **NO SACRIFICES** with the all new Tracer AIR line.



• 255 AIR Fall River Décor

# TRACER AIR



Champagne  
Fiberglass Option



• 235 AIR Nutmeg Décor

SPECIFICATIONS	215AIR	235AIR	240AIR	242AIR	250AIR	252AIR	255AIR
Length	23' 10"	26' 7"	26' 5"	26' 4"	28' 11"	28' 2"	26' 6"
Height	10' 3"	10' 3"	10' 5"	10' 5"	10' 8"	10' 8"	10' 3"
Hitch	420 lbs.	550 lbs.	490 lbs.	500 lbs.	495 lbs.	490 lbs.	600 lbs.
Ship Weight	3,779 lbs.	4,676 lbs.	4,265 lbs.	4,300 lbs.	4,907 lbs.	4,891 lbs.	5,000 lbs.
Carrying Capacity	2,204 lbs.	2,836 lbs.	1,787 lbs.	1,700 lbs.	1,151 lbs.	1,165 lbs.	2,544 lbs.

CONSTRUCTION	AIR	EXECUTIVE
• Gel Coated Fiberglass Exterior	S	S
• ETERNABOND CONSTRUCTION Featuring:	S	S
* Laminated Aluminum Framed Side Walls R-11 (AIR R-7)	S	S
* Laminated Aluminum Framed End Walls R-11 (AIR R-7)	S	S
* Laminated Aluminum Framed Main Floor R-14	S	S
* Laminated Aluminum Framed Slideout Walls & Roof R-11	S	S
• 3/8" Walk On Roof Decking With Double Insulation R-14	S	S
• Snow Load Approved 5" Truss Rafters	S	S
• One Piece Rubber Roof	S	S
• Thermal Package Plus	S	S
* Enclosed and Heated Underbelly	S	S
* Heated Holding Tanks	S	S
* Enclosed Dump Valves	S	S
* Heated Dump Valves	S	S
• 30 AMP Detachable Power Cord	S	S
• Fresh Water Capacity - 48 Gallons (AIR 38 Gallons)	S	S
• Waste Water Capacity - 30 Gallons	S	S
• Gray Water Capacity - 30 Gallons	S	S
EXTERIOR FEATURES & EQUIPMENT		
• A&E Electric Awning	S	S
• (4) 2,500lbs. Rated Manual Stabilizer Jacks	S	
• (4) 5,000lbs. Rated Manual Stabilizer Jacks		S
• Bus Style Slam Latch Baggage Doors		S
• Huge Pass Thru Storage with Oversized Doors	S	S
• Universal Docking Center = UDC	S	S
• Battery Disconnect Switch (UDC)	S	S
• Black Tank Flush (UDC)	S	S
• Outside Shower with Recoil Hose (UDC)	S	S
• Spare Tire with Carrier	S	S
• Black, Dark Tinted, Radius Safety Glass Windows	S	S
• Roof Mounted Antenna	S	S
• Cable Ready (UDC)	S	S
• Satellite Ready (UDC)	S	S
• Outside TV Bracket & Hook-Ups	S	S
• Exterior GFI	S	S
• LP Quick Connect	S	S
• Outside Speakers	S	S
• Aerodynamic Fiberglass Front Cap		S
• Front Diamond Plate Rock Guard	S	S
• "E-Z Lube" Greasable Axle Hubs	S	S
• EZ Tow Wide Track Suspension (AIR only Deep Slide Models)		S
• Radial Tires	S	S
• Amber Porch Light	S	S
• Extended Drip Spouts	S	S
• Hitch Light	S	S
• Outside Kitchen Cook Center (230FBS,2750RBS,3150BHD,3200BHT)		S

# STANDARD OPTIONS

INTERIOR FEATURES & EQUIPMENT	AIR	EXECUTIVE
• Raised Panel Kitchen Overhead Cabinet Doors	S	S
• 24" LED TV (28" LED on 3120RSD)	S	S
• AM/FM/CD/DVD Stereo System with MP3 Plug In	S	S
• Pre-drilled and Screwed Cabinetry	S	S
• Solid Wood Core Cherry Finish Cabinetry	S	S
• Hartford Cherry Cabinet Doors	S	S
• Satin Nickel	S	S
• Double Bowl Sink With Cover	S	S
• Hi Rise Kitchen Faucet	S	S
• Spice Rack Valance		S
• Grand Booth Dinette with 72" Window (230FBS,245BHS)		S
• Wall Border	S	S
• Residential Pleated Shades	S	S
• Lane® Furniture Residential Hide-A-Bed Sofa (most models)		S
• Extended Height Toilet with Foot Flush	S	S
• Wooden Medicine Cabinet	S	S
• Tub/Shower Surround	S	S
• Skylight Above Shower (most models)	S	S
• 12 V Exhaust Fan In Bath		S
• "Evergreen" Select Foam Queen Size Mattress	S	S
• Quilted Bunk Matts (where applicable)	S	S
APPLIANCES		
• Large 2-Door Refrigerator	S	S
• 13,500 BTU Residential Ducted Air Conditioner	S	S
• 6 Gal Gas/Electric Water Heater	S	S
• Quick Recovery Mode for Water Heater	S	S
• Hi Capacity Gas Furnace	S	S
• Large Oven	S	S
• Range Hood with Light and Exhaust	S	S
• 55 AMP Converter	S	S
• Water Heater Bypass	S	S
• Hi Capacity Water Pump	S	S
• Microwave	S	S
SAFETY		
• CO Detector	S	S
• LP Detector	S	S
• Fire Extinguisher	S	S
• Dual Hitch Safety Chains	S	S
• Smoke Alarm	S	S
OPTIONS		
• Free Standing Dinette with 4 Chairs (some floorplans)		O
• 15,000 BTU Air Conditioner		O
• Champagne Exterior	O	O
• 50 AMP Wire and Brace (3120RSD,3150BHD,3200BHT)		O





\*Residentially-Inspired Lane® Furniture

\* Lane® Furniture Hide-A-Bed Sofa



\* Aerodynamic Front Fiberglass Cap



Thermal Package Plus



\* Bus Style Slam Latch Baggage Doors



EZ Tow Wide Track Suspension  
Tracer Executive & AIR Deep Slide Models



"One Touch" Electric Awning



Universal Docking Station



Front Diamond Plate Rock Guard



Easy Access Low Point Drains



Extended Drip Spouts



Exterior Entertainment Hook-Up



LP Quick Connect



ETERNABOND® Construction

\* N/A on Tracer AIR Models

# DSI QUALITY CIRCLE AWARD WINNER - 2010, 2011, 2012, 2013

Prime Time Manufacturing is proud to be recognized as an industry leader in value, reliability, and overall quality by the Recreational Vehicle Dealers Association. This was accomplished by committing ourselves to "A Higher Standard" in design, construction, testing, and customer service. Check us out - we know you'll be impressed!



Seal Tech Air Pressure Test



ETERNABOND Construction



Rain Bay



Seek-A-Leak Pressure Test



65 Point Secondary PDI



Web Based  
Customer Service



Executive Quality Audits



Advanced Engineering



www.primetimerv.com



## HERE'S JUST A SAMPLE OF THE BENEFITS\*

- ✓ Mobile Mechanic
- ✓ Free Jump Starts
- ✓ Tire Changes
- ✓ \$2000 Trip Interruption
- ✓ Appointment Assistance
- ✓ Lock Out Service
- ✓ Fuel Delivery
- ✓ Service Assistance
- ✓ Custom Trip Routing and Maps
- ✓ 24 Hour Emergency Messaging

\*Exclusions and restrictions apply. See member guide for details.



Forest River, Inc. encourages our customers to purchase their Forest River products from a local dealership whenever possible for the following reasons:

- 1) Forest River, Inc. dealers are independently owned and operated businesses so priority service and scheduling is at their discretion and is often provided to customers that purchased their unit at that dealership.
- 2) Purchasing locally allows customers to establish meaningful relationships with a dealer, enhancing the RV experience through assistance with product questions, user tips or RV regulations for your state or country, and much more!
- 3) Canadian customers must meet requirements to bring an RV purchased out of the country to their home. These requirements may involve additional inspections and certifications, taxes and fees. Your local Canadian Dealer is a professional at meeting these requirements.
- 4) Scheduling timely warranty repairs and adjustments through a local dealership provides far greater flexibility and convenience to you, the customer!

It is the goal of Forest River, Inc. that all of our RV owners fully enjoy the RV experience and that customer satisfaction meets or exceeds their expectations!

All illustrations and specifications contained in this literature are based on the latest product information at time of publication. Prime Time Manufacturing reserves the right to make changes in prices, colors, materials, equipment and specifications at anytime, without notice, and assumes no responsibility for any error in this literature. All units are shipped F.O.B. point of manufacture.

F-66-367 © 2013  
Forest River Litho U.S.A.



**Learn More**  
Scan this barcode using a QR Reader on your smart phone to learn more about Forest River.



DEALER