

ROCKWOOD

ULTRA LITE * MINI LITE * ROO



ULTRA LITE * MINI LITE * ROO

ROCKWOOD



YOUR LITE WEIGHT SPECIALIST.



2703WS Hampton with Cherry

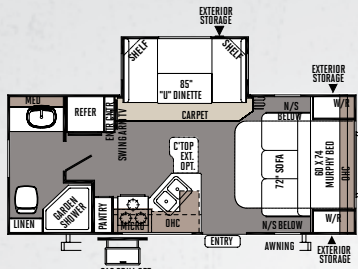


02

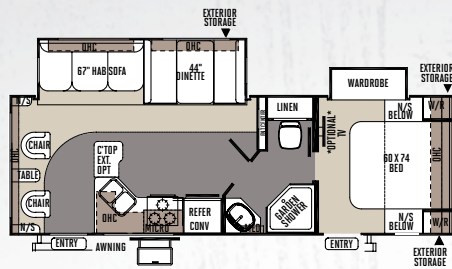
ROCKWOOD ULTRA LITE

YOU'LL LOVE WHAT YOU FIND IN OUR FLOOR PLANS.

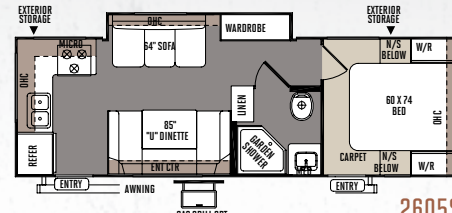
Our trailers are packed full of quality features in order to bring to you one of the best values in the light weight market. There are spacious flush floor slides, distinctive decors with solid wood door and drawer fronts and free standing tables with easily adjustable legs. We only use our best inside the "Ultra Lite" series.



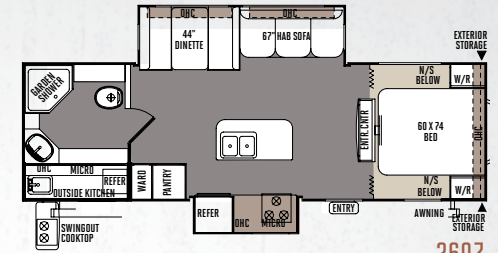
2304S



2604WS



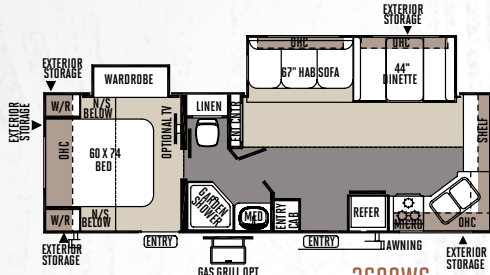
2605S



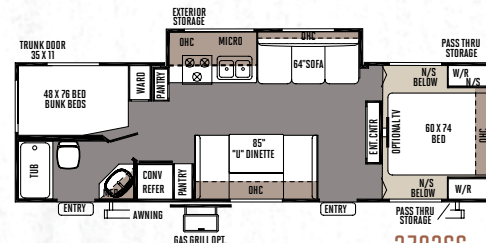
2607



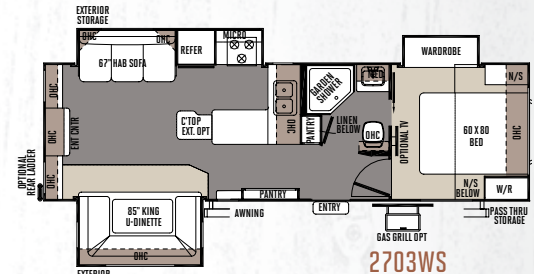
Free Standing Table and Chairs optional with: 2304S, 2604WS, 2608WS, 2607, 2703WS, 2904SS, 2905SS, 2910TS.



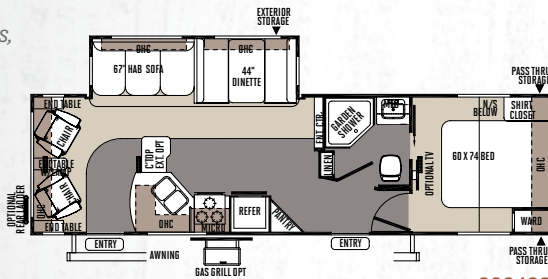
2608WS



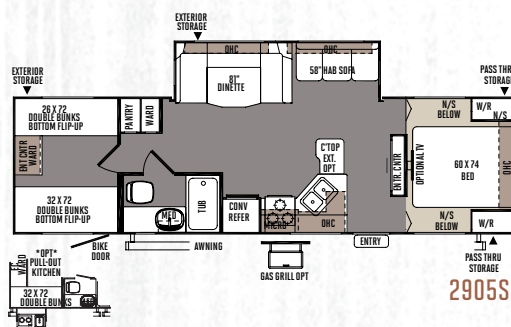
2702SS



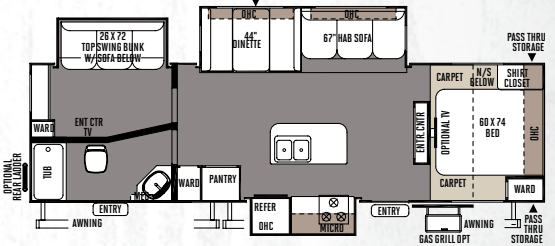
2703WS



2904SS



2905SS



2910TS

SPECIFICATIONS

Model number of any particular unit does not necessarily reflect the overall length of the unit itself. Dry weights are estimates.

MODEL	2304S	2604WS	2605S	2607	2608WS	2702SS	2703WS	2904SS	2905SS	2910TS
BASE/DRY UNIT WEIGHT	4605	5665	5021	5934	5675	5246	6311	6150	5941	6267
BASE DRY HITCH WEIGHT	661	711	548	920	723	629	549	560	793	891
BASE DRY AXLE WEIGHT	3944	4954	4473	5014	4952	4617	5762	5590	5148	5376
CARGO CAPACITY	1808	1025	1489	1517	962	1345	1438	1372	1814	1586
LENGTH	23' 9"	29' 8"	29' 5"	31'	29' 7"	31' 11"	31' 11"	33' 8"	33' 8"	33' 8"
WIDTH	96"	96"	96"	96"	96"	96"	96"	96"	96"	96"
HEIGHT W/D A/C	116"	115"	112"	112"	116"	111"	117"	114"	115"	115"
INTERIOR HEIGHT	80"	80"	80"	80"	80"	80"	80"	80"	80"	80"
FRESH WATER CAPACITY	36 GAL	36 GAL	36 GAL	36 GAL	36 GAL	36 GAL	36 GAL	36 GAL	36 GAL	36 GAL
GRAY WATER CAPACITY	37 GAL	37 GAL	74 GAL	74 GAL	74 GAL	37 GAL	37 GAL	74 GAL	37 GAL	74 GAL
BLACK WATER CAPACITY	37 GAL	37 GAL	37 GAL	37 GAL	37 GAL	37 GAL	37 GAL	37 GAL	37 GAL	37 GAL



Rear bedroom with a spacious wardrobe slide

ROCKWOOD ULTRA LITE EMERALD PACKAGE

Rockwood has put together a group of appealing features to enhance the appearance of the Ultra Lite series of travel trailers. The Emerald Package adds style and luxury to a trailer already packed full of value. A complete list of the Emerald Package contents can be found in the Standards and Options section on page 15.



Tinted Bonded Frameless Windows



Slam Latches on Storage Doors



Solid Surface Corian Counter Top & Upgraded Decorative Slide Out Fascia
(Shown with Hampton/Cherry Decor)



Tan Fiberglass Exterior w/ Black Accents and Aluminum Wheels



Front Bedroom w/ optional Murphy Bed in the Down Position.



Sofa accessible w/ optional Murphy Bed in Stored Position.



2306 Kensington with Cherry

ROCKWOOD MINI LITE

CLEARLY THE BEST CHOICE IN A LIGHT WEIGHT TRAILER.

As with every series designed by Rockwood, a premium is placed on superior craftsmanship and unmatched value. By combining light weight floor plans with residential features you wouldn't expect to find, the Mini Lite surpasses other products in its class.



1901 Kensington with Hickory
(Shown with Murphy Bed in Stored Position and Optional Dinette)



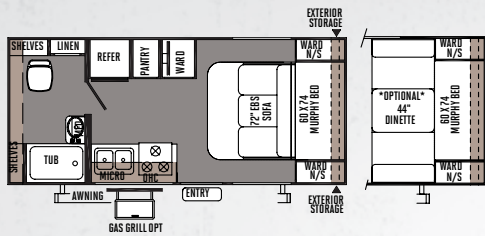
Full Kitchen with Rear Bathroom.

06

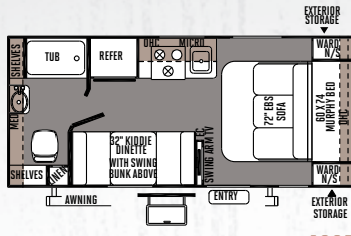
ROCKWOOD MINI LITE

TOWING A TRAILER DOESN'T REQUIRE A TRUCK ANYMORE.

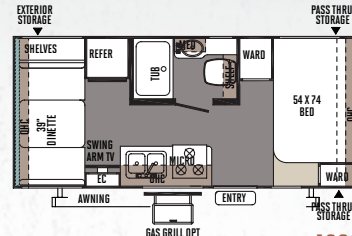
When towing size and weight are your focus. You will find that these specially designed Mini Lite models offer flexible floor plans that provide you with more comfort and amenities that you would expect all within the towing capacity of many small SUV's and Mini Vans.



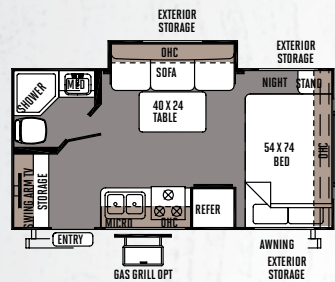
1901



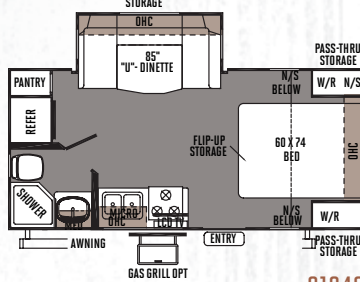
1905



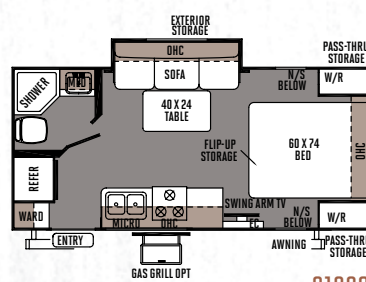
1906



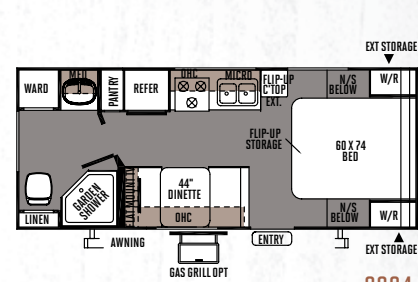
1809S



2104S

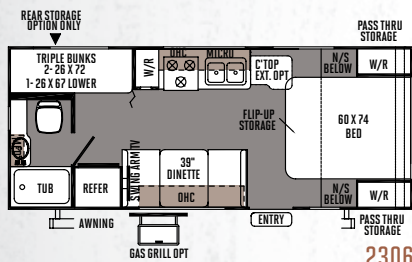
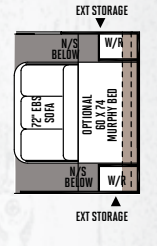


2109S

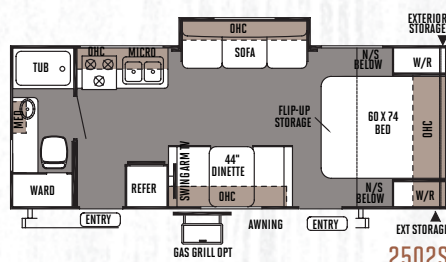


2304

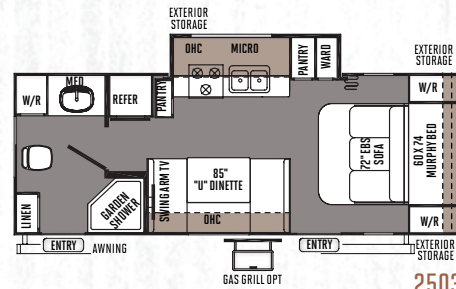
OPT 2304 & 2306



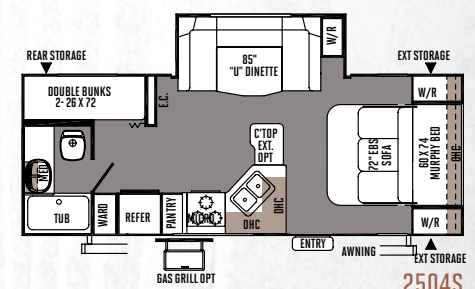
2306



2502S



2503S



2504S

SPECIFICATIONS

Model number of any particular unit does not necessarily reflect the overall length of the unit itself. Dry weights are estimates.

MODEL	1901	1905	1906	1809S	2104S	2109S	2304	2306	2502S	2503S	2504S
BASE/DRY UNIT WEIGHT	2871	2972	2710	3522	3865	3665	3756	3759	4023	4310	4377
BASE DRY HITCH WEIGHT	352	415	417	253	468	336	527	334	378	538	480
BASE DRY AXLE WEIGHT	2519	2557	2293	3269	3397	3329	3229	3425	3645	3772	3897
CARGO CAPACITY	943	905	1169	1093	943	1033	1133	937	1833	1833	1833
LENGTH	20' 4"	20' 4"	20' 4"	20'	21' 8"	21' 8"	23' 9"	23' 8"	25' 8"	25' 8"	25' 10"
WIDTH	90"	90"	90"	96"	96"	96"	96"	96"	96"	96"	96"
HEIGHT W/D/A/C	105"	105"	105"	109"	113"	111"	108"	108"	109"	110"	117"
INTERIOR HEIGHT	78"	78"	78"	80"	80"	80"	80"	80"	80"	80"	80"
FRESH WATER CAPACITY	36 GAL	36 GAL	36 GAL	36 GAL	36 GAL	36 GAL	36 GAL	36 GAL	36 GAL	36 GAL	36 GAL
GRAY WATER CAPACITY	30 GAL	30 GAL	30 GAL	30 GAL	30 GAL	30 GAL	30 GAL	30 GAL	30 GAL	30 GAL	30 GAL
BLACK WATER CAPACITY	30 GAL	30 GAL	30 GAL	30 GAL	30 GAL	30 GAL	30 GAL	30 GAL	30 GAL	30 GAL	30 GAL



ROCKWOOD

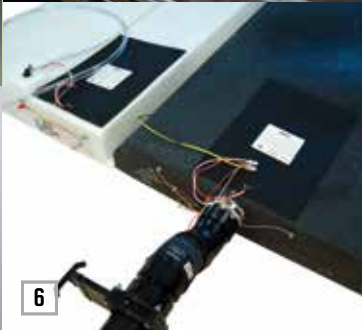
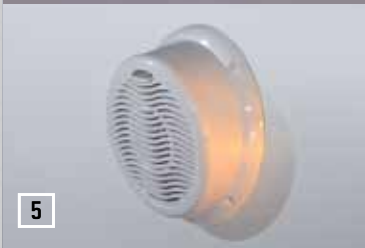
POPULAR FEATURES

FEATURES THAT MAKE YOUR TRIP FEEL LIKE HOME.

Rockwood takes pride in packing the most value possible into our Ultra Lite, Mini Lite and Roo series. While coming standard with many features, you still have the flexibility to incorporate as many options as you choose to fit your camping preferences.



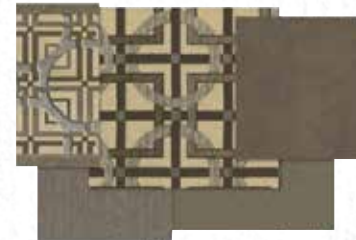
- 1 Power Awning with Adjustable Rain Dump and LED Lighting (Opt.)
- 2 Solid Wood Door & Drawer Fronts with Metal Drawer Guides
- 3 Aluminum Wheels (Opt., UL: Included w/ Emerald Package)
- 4 29" & 32" LCD w/ 5.1 Dolby Speaker System with "Bluetooth" Technology. (Opt. UL: Select Models)



- 1 RVQ grill *(Opt.)*
- 2 Fantastic Fan with Cover *(Std. Opt)*
- 3 Water Filter *(Std. Opt)*
- 4 Heated Innerspring Mattresses *(Std. Opt. on ML & R)*
- 5 Outside Speakers *(Standard Option All Models)*
- 6 Heated holding tanks with 12 volt heat pads secured to the bottom *(Opt.)*
- 7 Outside Shower *(Std.)*
- 8 Outside Antifreeze Inlet with Easy Access to Water Pump in Storage Compartment for convenient Winterizing. *(Std.)*
- 9 Roo Bunk Cables — No Support Poles Needed *(Std. all Roo Models)*



CHURCHILL



HAMPTON



KENSINGTON



CHERRY DÉCOR OPTION



HICKORY DÉCOR OPTION



STANDARD FLOOR COVERING

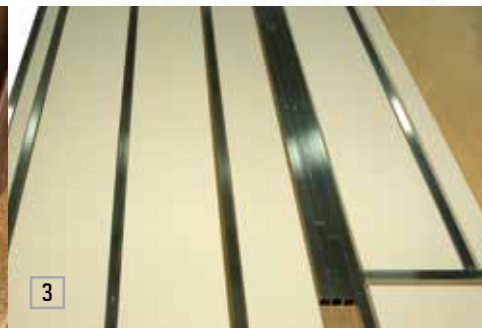
OPTIONAL FLOOR COVERING

ROCKWOOD

QUALITY CONSTRUCTION

THE DETAILS ARE WHAT MAKE ALL THE DIFFERENCE.

Rockwood takes pride in constructing the very best products possible in each price point. From our entry level units to our top of the line products, no short cuts are taken to achieve excellence. From the all-steel I-beams to the residential interior amenities to the vacuum-bonded exteriors, Rockwood products are quality-built from the ground-up.



- 1 Glued and screwed wood cabinetry
- 2 Aluminum dinette frames for added strength and weight savings
- 3 Vacuum-bonded floor with 16" on center aluminum floor joists (*Std. Ultra Lite, select Roo models*)
- 4 Extra large dinette storage drawers
- 5 Full extension metal drawer guides in the kitchen
- 6 Dexter Torflex Axles:
 - Independent wheel suspension and self-damping action
 - Rubber cushioning eliminates metal-to-metal contact.
 - Forged torsion arm for maximum strengthModels are also equipped with E-Z Lube® System and Nev-R-Adjust® Brakes.
- 7 Enclosed underbelly protects trailer components as well as increasing aerodynamics (*Ultra Lite models only*)
- 8 Aluminum Frame Construction with fiberglass exterior and deluxe graphics

ROOF CONSTRUCTION



Vacuum-bonded radius roof with vaulted ceiling providing superior insulation and more interior height.



4" thick roof with built in insulated A/C ducts



Built strong to enable you to conveniently perform periodic roof maintenance.

WALL STRENGTH



Structurally engineered materials makes our vacuum-bonded walls some of the strongest in the industry.

VACUUM-BONDED LAMINATED CONSTRUCTION



Flagstaff is one of the few manufacturers that is a **fully 6 sided vacuum-bonded trailer**. Our walls, floors, roof, fronts and backs are all aluminum framed and vacuum-bonded to ensure a light weight strong structural trailer.



233S Churchill with Hickory

12

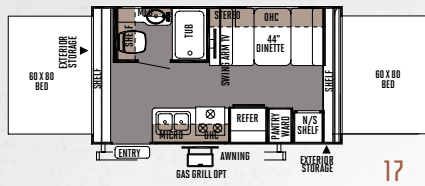
ROCKWOOD ROO

THERE'S MORE TO THE ROO THAN MEETS THE EYE.

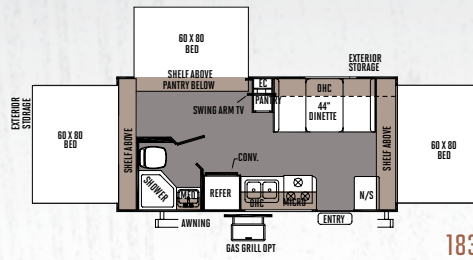
Rockwood has designed specific models to meet individual needs. From the front deck models that allow you to bring your ATV along, to models with a third fold down bunk for more sleeping options, the Roo has the model for you. It's no wonder Roo is the top choice for expandable trailers.



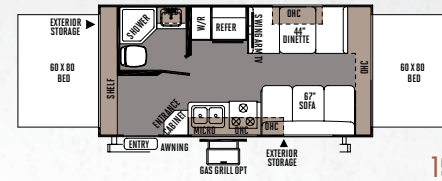
The 233S has a Third Fold Down Bunk for Added Sleeping Capacity and ample storage below for your camping supplies.



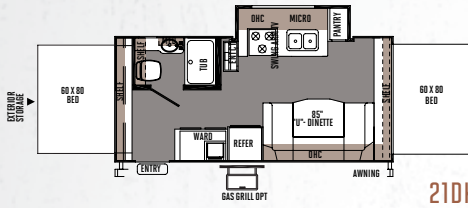
17



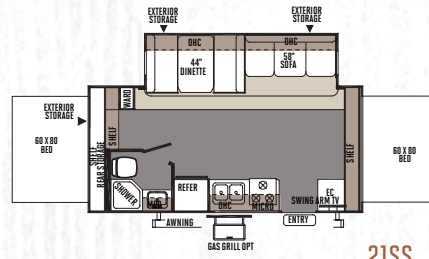
183



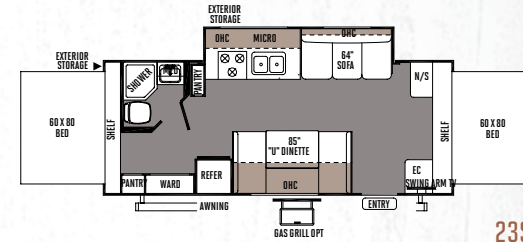
19



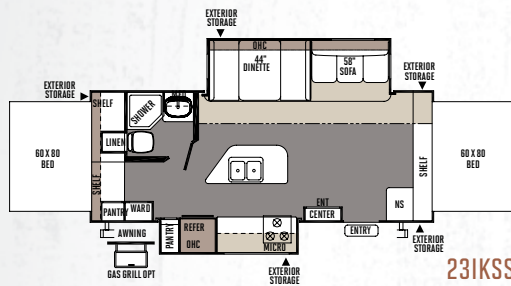
21DK



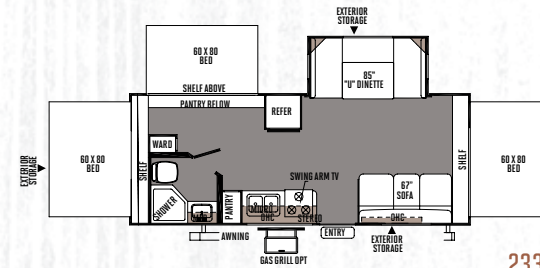
21SS



23SS



231KSS



233S

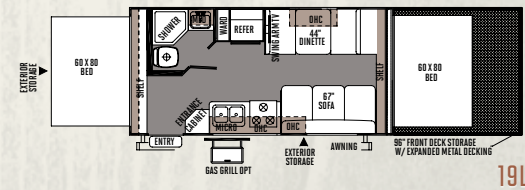


SPECIFICATIONS

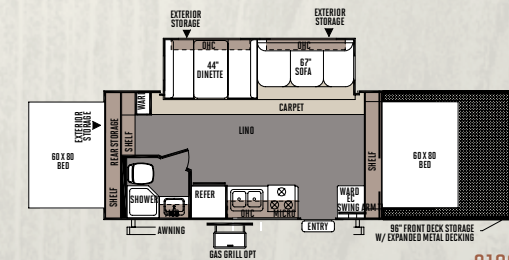
Model number of any particular unit does not necessarily reflect the overall length of the unit itself.
Dry weights are estimates.

MODEL	17	183	19	21DK	21SS	231KSS	233S	233S	19L	21SSL
BASE/DRY UNIT WEIGHT	2969	3498	3524	3859	4316	4858	4333	4365	4432	4991
BASE DRY HITCH WEIGHT	360	353	344	565	635	514	443	623	321	383
BASE DRY AXLE WEIGHT	2609	3145	3180	3294	3681	4344	3890	3742	4111	4608
CARGO CAPACITY	853	1217	1182	1068	2281	1618	1833	1833	2900	2354
LENGTH	19'	20' 9"	20' 9"	21' 10"	21' 9"	24' 10"	24' 10"	24' 10"	30' 1"	31' 1"
TRAILER LENGTH (Open)	23' 4"	25' 1"	25' 1"	27' 10"	27' 9"	29' 2"	29' 2"	29' 2"	33' 5"	35' 2"
WIDTH	96"	96"	96"	96"	96"	96"	96"	96"	96"	96"
HEIGHT W/O A/C	111"	110"	110"	113"	117"	115"	111"	111"	118"	117"
INTERIOR HEIGHT	80"	80"	80"	80"	80"	80"	80"	80"	80"	80"
FRESH WATER CAPACITY	36 GAL	36 GAL	36 GAL	36 GAL	36 GAL	36 GAL	36 GAL	36 GAL	36 GAL	36 GAL
GRAY WATER CAPACITY	30 GAL	30 GAL	30 GAL	30 GAL	30 GAL	30 GAL	30 GAL	30 GAL	30 GAL	30 GAL
BLACK WATER CAPACITY	30 GAL	30 GAL	30 GAL	30 GAL	30 GAL	30 GAL	30 GAL	30 GAL	30 GAL	30 GAL

FRONT STORAGE DECK MODELS



19L



21SSL

STANDARDS & OPTIONS

Standards & Options are subject to change.

MODELS	UL	ML	R
INTERIOR FEATURES			
· Hickory Interior	S	S	S
· Cherry (w/ Solid Cherry Hand Rubbed Cabinet Doors) Interior	O	O	O
· Upgraded Decorative Wood Slide Out Fascia	EP	--	--
· Solid Wood and Raised Panel Doors and Drawers	S	S	S
· Screwed and Glued Wood Cabinetry	S	S	S
· Residential Full Extension Metal Drawer Guides in Kitchen	S	S	S
· Flooring: Carpet and an Engineered Mold and Mildew Resistant Floor Covering (21SS, 21SSL, 231KSS, 233S Only, All UL Models)	S	--	S*
· Engineered Mold and Mildew Resistant Floor Covering	S	S	S*
· Minimum Carpet	O	--	--
· Ducted Furnace (2304S Only)	S*	S	S
· Floor Ducted Furnace (N/A 2304S)	S*	--	--
· 13,500 BTU Ducted Air (N/A 1901, 1905, 1906, 1809S, 17, 183, 19, 19L)	SO	SO*	SO*
· 15,000 BTU A/C	O	O	O
· 13,500 Roof A/C (Std. 1809S, , 17, 183, 19, 19L) (OPT. 1901, 1905, 1906)	--	SO*	SO*
· Carbon Monoxide Detector	SO	SO	SO
· 12 Volt Power Plug Hook-up	S	S	S
· CSA	O	O	O
· Monitor Panel Switch Station	S	S	S
· 55 Amp Converter With Charger	S	S	S
· Battery Disconnect Switch	S	S	S
· LED 12 Volt Interior Lighting	S	S	S
· Directional Reading Lights on Sofa Slides	S	S	S
· Bunk Fan/Light Combination with Each Bed	--	--	S
· Mounted 24" LCD TV (Opt. 1901, 1905, 1906)	SO	SO*	SO
· Bedroom Mounted 24" LCD TV (Opt. All UL Models Except 2304S, 231KSS, 23SS, 233S)	O*	O*	O*
· 29" LCD TV With 5.1 Digital Dolby Surround Sound Speaker System (N/A 2304S)	O	--	--

MODELS	UL	ML	R
· 32" LCD TV With 5.1 Digital Dolby Surround Sound Speaker System (Std. 2703WS OPT. 2607, 2702SS, 2904SS, 2905SS, 2910TS)	S*/O*	--	--
· Digital AM/FM/CD/DVD w/ Remote	S	S	S
· MP3 Player Hook-Up	S	S	S
· Decorative Valances	--	S	S
· Designer Valances w/ Lambrequin Arms	S	--	--
· Mini Blinds	S	--	--
· Night Shades	--	O	O
· Day/Night Shades	O	--	--
· Swivel Chairs (Std. 2604WS Only)	S*	--	--
· Serta Recliners (Std. 2904SS Only)	S*	--	--
· End Table with Attached Lamp (Std. 2604WS, 2904SS)	S*	--	--
· Air Hide-A-Bed Sofa w/ Storage (Std. 2604WS, 2607, 2608WS, 2703WS, 2904SS, 2905SS, 2910TS) (Opt. 21SS/21SSL, 231KSS)	S*	--	O*
· Aluminum Bed and Dinette Frames	S	S	S
· 44" Family Dinette (N/A 2104S, 2504S, 2304S, 2605S, 2702SS, 2703WS, 2905SS, 21DK, 233S)	S*	S*	S*
· 48" X 84" Spacious King-U-Style Dinette (Std. 2104S, 2504S, 2304S, 2605S, 2702SS, 2703WS, 2905SS, 21DK, 233S)	S*	S*	S*
· Free Standing High Pressure Laminated Table with Swing Level Legs (Swing Level Legs N/A 1901, 1905, 1906, 1809S, 2109S)	S	S*	S
· Free Standing Table and Chairs (2304S, 2604WS, 2608WS, 2607, 2703WS, 2904SS, 2905SS, 2910TS Only)	S*	--	--
· Stainless Steel Appliances	O	O	O
· Raised Refrigerator Panels	O	O	O
· Auto Gas/Electric Refrigerator	S	S	S
· 3 Burner High Output Gas Range w/ Glass Stove Top Cover	S	S	S
· Gas Oven (Required 21DK, 231KSS, 23SS, 2503S) (Included w/ OP6: 1901, 1905, 1906 Only)	SO	O*	O*
· Microwave Oven	S	S	S

MODELS	UL	ML	R
· Solid Surface Corian Counter Tops in Kitchen	EP	--	--
· Double Bowl Sink w/ Residential Style Faucet (NA 1905)	S	S	S
· Residential One-Piece Sink Cover	S	S	S
· Cutting Board	S	S	S
· Counter Top Extension (Available 2304S, 2604WS, 2703WS, 2904SS, 2905SS, 2504S Only)	O*	O*	--
· Water-Pur Filtration System	SO	SO	SO
· Tub Surround	S	S	S
· Bathroom Skylight	S	S	S
· 110 DSI Gas/Electric Six Gallon "Quick Recovery" Water Heater	SO	SO	SO
· Water Heater By-Pass Kit	S	S	S
· Foot Flush Toilets	S	S	S
· Create-A-Breeze Three Speed Fantastic Fan with Vent Cover	SO	SO	SO
· Extra Create-a-Breeze Fan	O	O	S
· Murphy Bed System for Unmatched Floor Plan Flexibility (Std. 2304S, 2503S, 2504S, 1901, 1905, OPT. 2304, 2306)	S*	O*/S*	--
· Heated Mattress	O	SO	SO
· Serta Upgrade Mattress All Walk Around Beds	S	--	--

EXTERIOR FEATURES

· Fully Laminated Aluminum Frame (Floor, Sidewall, & Roof)	S	S	S
· Insulation Factors R-7 Side Wall, R-12 Floor and R-14 Ceiling	S	S	S
· Radius Roofs w/ Interior Vaulted Ceilings (N/A 1901, 1905, 1906)	S	S*	S
· Vinyl / Rubber Composite Roofing Membrane	S	S	S
· T V Antenna w/ Cable & Satellite Hook-Up	S	S*	S
· Laminated Tan Fiberglass Sidewalls	EP	--	--
· Electric Slide-Out (All Slide Out Models)	S	S	S
· Laminated Fiberglass Sidewalls	S	S	S
· Laminated Tan Fiberglass Sidewalls	EP	--	--
· Electric Slide-Out (All Slide Out Models)	S	S	S
· Lower Front Diamond Plate Panel (N/A 1901, 1905, 1906)	S	S*	--

UL = ULTRA LITE
ML = MINI LITE

R = ROO
S = STANDARD

SO = STANDARD OPTION
O = OPTIONAL

-- NOT AVAILABLE
OP = OPTIONAL PACKAGE

CP = CONVENIENCE PACKAGE
* = SELECTED MODELS



MODELS	UL	ML	R
Decorative Frame Skirting	S	--	S
Industrial Lockable Bed Latches	--	--	S
Easy Step Assist to Access Bed Latches	--	--	S
Bed Cable System (No Poles)	--	--	S
Rear Ladder	0	--	--
Power Awning With Adjustable Rain Dump and LED Lighting	SO	0	0
Awning (Opt: 1901, 1905, 1906)	--	SO*	SO
Awning Slide Topper	0	0	0
Entrance / Screen Door	S	S	S
Large Assist Grab Handles	SO	S	S
Lighted Entry Stop and Scare Light	EP	--	--
Radius Corner Windows and Doors	S	S	S
Windows w/ Tinted Safety Glass	SO	SO	SO
Tinted Bonded Frameless Windows	EP	--	--
Thermopane Windows	0	0	0
Large Dinette Picture Window	S	S	S
Outside Grill Prep	S	S	S
Outside Gas Grill and Worktable (Opt: 1901, 1905, 1906)	SO	SO*	0
Outside Speakers	S	S	S
Outside Shower	S	S	S
1/2 Sliding Storage Tray (N/A 1901, 1905, 1906, 2304, Models w/ Murphy Bed) (Opt. 2304S, 17, 183, 19, 19L, 21SS, 21SSL, 23SS, 23IKSS)	0*	0*	0*
Outside Antifreeze Stations	S	S	S
Slam Latches on Storage Doors	EP	--	--
Two-20 Lb Gas Bottles	--	--	S
Two-30 Lb Gas Bottles	S	S	--
Molded Bottle Cover	S	S	S
Surface Coated Steel I-Beam Frame (N/A 1901, 1905, 1906)	S	S*	S
96" Front Storage Deck W/ 1300 LBS. Max Capacity (19L, 21SSL Only)	--	--	S*
Power Tongue Jack	0	0	0
Stabilizer Jacks	S	S	S
Power Stabilizer Jacks	0	--	--

MODELS	UL	ML	R
Torsion Axle, Rubber-Ryde Suspension	S	S	S
Easy Lube Axles and Nev-R Adjust Brakes	S	S	S
Radial Tires w/ Nitro Fill	S	S	S
Double or Triple Entry Step	S	S	S
Off Road Package (Includes: 15" Off Road Tires and Aluminum Wheels) (19L, 21SSL Only)	--	--	S*
Chrome-look Wheel Covers	0	0	0
Aluminum Wheels	0/EP	0	0
Spare Tire Carrier & Cover	SO	SO	0
Electronically Controlled Heated Holding Tanks	0	0	0
Enclosed Holding Tanks	S	--	--
Black Water Flush	S	--	--
CONVENIENCE PKG. B INCLUDES:	SO	--	--
13,500 BTU Ducted Air			
Mounted 22" LCD TV w/ AM/FM Stereo, CD, DVD Player			
Gas Oven			
Microwave Oven			
110 DSI Gas/Electric Six Gallon "Quick Recovery" Water Heater			
Power Awning w/ LED Lighting			
Large Assist Grab Handle			
Windows w/ Tinted Safety Glass			
Outside Grill and Worktable			
Outside Speakers			
Spare Tire Carrier & Cover			
EMERALD PACKAGE INCLUDES:	0	--	--
Tan Colored Fiberglass			
Deep Tinted Frameless Bonded Windows			
Slam Latches on Storage Doors			
Exterior Step and "Scare" Light			
Aluminum Wheels			
Solid Surface Corian Kitchen Counter top			
Upgraded Slide Fascia			

MODELS	UL	ML	R
OPTION PKG. G INCLUDES: (19RB, 19FD, 19RD ONLY)	--	SO*	--
Gas Oven			
Microwave Oven			
110 DSI Gas/Electric Six Gallon "Quick Recovery" Water Heater			
TV Antenna w/ Cable & Satellite Hook-up			
Spare Tire Carrier & Cover			
Outside Speakers			
CONVENIENCE PKG. A INCLUDES: (N/A 19RB, 19FD, 19RD)	--	SO*	--
13,500 BTU Roof A/C (1809S Only)			
13,500 BTU Ducted Air (All Except 1809S)			
Mounted 22" LCD TV w/ AM/FM Stereo, CD, DVD Player			
Microwave Oven			
110 DSI Gas/Electric Six Gallon "Quick Recovery" Water Heater			
Awning			
Windows w/ Tinted Safety Glass			
Outside Grill and Worktable			
Outside Speakers			
Spare Tire Carrier & Cover			
CONVENIENCE PACKAGE C INCLUDES:	--	--	SO
13,500 BTU Roof A/C (17, 183, 19, 19L)			
13,500 BTU Ducted Air (21DK, 21SS, 21SSL, 23SS, 23IKSS, 233S)			
Mounted 22" LCD TV w/ TV Antenna & Cable Hook-up			
Microwave Oven			
110 DSI Gas/Electric Six Gallon "Quick Recovery" Water Heater			
Awning			
Windows w/ Tinted Safety Glass			
Outside Speakers			



PRE-DELIVERY INSPECTION FACILITY

20,000 square feet of quality assurance. The bare essentials for a premium product. This state-of-the-art facility gives immediate daily feedback to production for quality assurance in every unit built.



Forest River, Inc. encourages our customers to purchase their Forest River products from a local dealership whenever possible for the following reasons:

- 1) Forest River, Inc. dealers are independently owned and operated businesses so priority service and scheduling is at their discretion and is often provided to customers that purchased their unit at that dealership.
- 2) Purchasing locally allows customers to establish meaningful relationships with a dealer, enhancing the RV experience through assistance with product questions, user tips or RV regulations for your state or country, and much more!
- 3) Canadian customers must meet requirements to bring an RV purchased out of the country to their home. These requirements may involve additional inspections and certifications, taxes and fees. Your local Canadian Dealer is a professional at meeting these requirements.
- 4) Scheduling timely warranty repairs and adjustments through a local dealership provides far greater flexibility and convenience to you, the customer!

It is the goal of Forest River, Inc. that all of our RV owners fully enjoy the RV experience and that customer satisfaction meets or exceeds their expectations!

24/7 EMERGENCY ROADSIDE ASSISTANCE

For a worry-free ownership experience

Forest River includes one

year of Coach-Net RV Technical & Roadside

Assistance with each RV purchase. Whether

new to the RV lifestyle or an experienced RV enthusiast,

Forest River owners have 24/7 access to technical,

operational and emergency road service

coverage throughout the US & Canada.

Coach-Net's fast, dependable

service is just a phone

call away.

Coach-Net®

RV Technical & Roadside Assistance



ROCKWOOD WARRANTY

For details on Rockwood's complete warranty program, see your Rockwood dealer. When it comes to backing products with the same quality and commitment it has when it begins the manufacturing process, the only name you have to remember when you're looking for a recreational vehicle is Rockwood. Rockwood offers the following additional limited warranties to the original purchasers. Consult written warranty for details.

1. Twelve-year vinyl roof warranty, 2. Two-year fiberglass warranty, 3. Five-year axle warranty, 4. Five-year tent warranty, 5. One-year bumper to bumper warranty, 6. Available second-year warranty

YOUR ROCKWOOD DEALER

201 West Elm Millersburg, IN 46543 | www.forestriverinc.com/Rockwood
574.642.2640



Learn More

Scan this barcode using a QR Reader on your smart phone to learn more about Forest River.



A Berkshire Hathaway company.

All specifications contained herein are based on the latest product information at time of printing. Forest River reserves the right to make changes in colors, materials, equipment and specifications at any time without notice and assumes no responsibility for any errors in this brochure. Litho. U.S.A. FDR 1092 | W/P: 2013.09.02