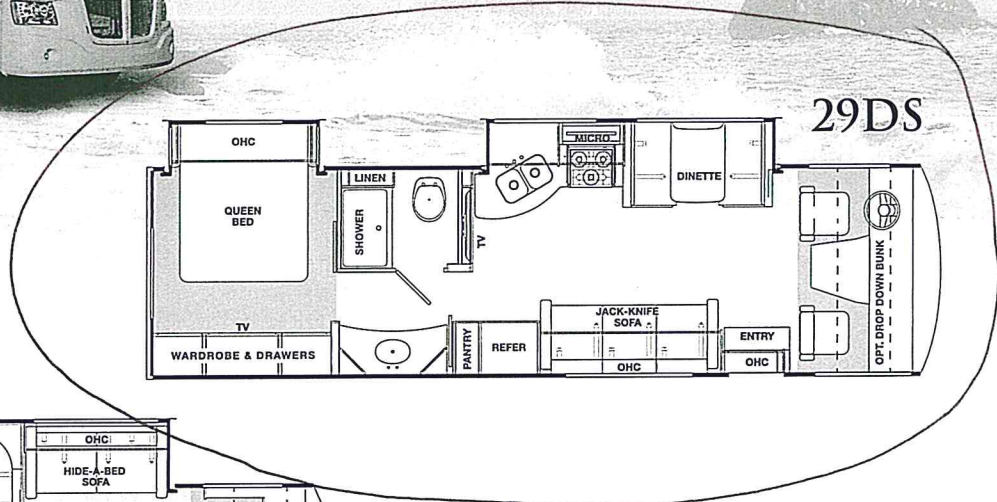


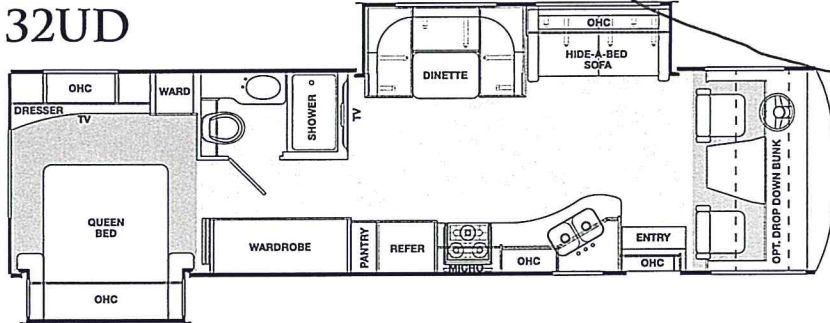


MIRADA

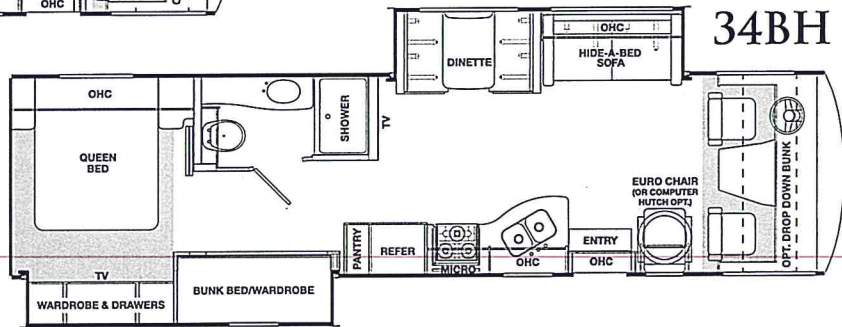
CLASS A GAS MOTORHOME



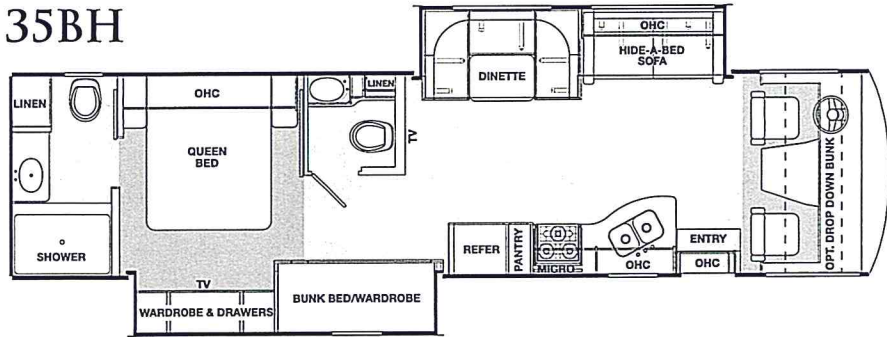
32UD



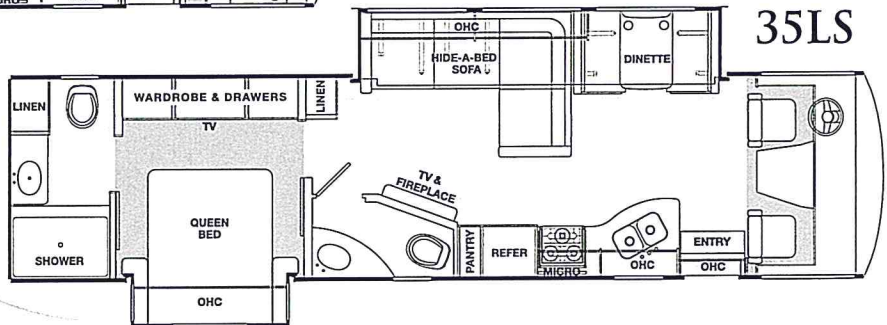
34BH



35BH



35LS



423 N. Main Street • P.O. Box 30
Middlebury, IN 46540

To learn more about Coachmen RV and our products
and see how Coachmen is making the easy life easier,
visit www.coachmenrv.com

STANDARD AND OPTIONAL FEATURES

EXTERIOR/AUTOMOTIVE

- Tilt Steering Wheel
- Cruise Control
- Intermittent Wipers
- Dash Air Conditioning
- 19.5 Radial Tires
- Rear Mud Flaps
- Power Entrance Step - Double
- Crowned, Laminated Fiberglass Roof
- Full Basement w/Pass Thru Storage
- Radius Trunk Doors w/Slam Latch
- High Gloss "TAN" Sidewalls
- Fiberglass Front Cap & Rear Cap
- Dead Bolt Lock-Entrance Door
- 26" Radius Entry Door
- Power Patio Awning
- 5,000 lb. Towing Hitch w/7-way Plug
- Back Up Camera (3-way Ready)
- Rear Mounted Roof Ladder
- Exterior Mirrors
- Stainless Steel Wheel Liners
- Automatic Leveling Jacks
- Slide-Out Room Awnings
- 20-Gallon LP Tank
- Travel Easy Roadside Assistance - provided by Coach-Net

INTERIOR AND DECOR

- Gobi Wall Board with S/O Accent Saddle
- Solid Surface Kitchen Countertop
- Congoleum® Linoleum
- Antique Nickel Hardware
- Hardwood Cabinet Doors/ Raised Panel Overhead Doors
- Ball Bearing Drawer Guides Throughout
- Radius Slider Windows w/Safety Glass

- Reclining/Swivel Pilot Seats
- Visionary Sofa Hide-A-Bed (NA 29DS)
- 84" Jack-knife Sofa (29DS)
- L-Shape Sofa Hide-A-Bed (35LS)
- Pleated Day/Night Shades
- Power Windshield Shade w/Manual Side Shade
- Radio AM/FM/CD
- Cable TV Jack
- LP Leak Alarm and Smoke Detector
- Carbon Monoxide Detector
- Fire Extinguisher
- TV Antenna and Roto Package
- 39" LCD TV Coach
- DVD Player in Living Room
- Dream Dinette (NA 32UD & 35BH)
- Fireplace Electric (35LS)
- Pre-wire for Satellite Dish

GALLEY

- Flush Mount, Double Door Refrigerator
- High Rise Kitchen Faucet
- Double Bowl Stainless Steel Kitchen Sink
- Flush Mounted 3-Burner Range w/Oven
- Solid Surface Range and Sink Covers
- 30" OTR Microwave Oven
- Pull-Out Pantry w/Counter Top
- Ceramic Tile Backsplash

SLEEPING

- Queen Bed 60x74
- Bunk Beds 34x72 Convert to Wardrobe (34BH, 35BH)
- Deluxe Innerspring Mattress - 312 Coil
- Bedspread and Pillows w/Shams
- 32" LCD TV Bedroom

BATH AND WATER

- Stainless Steel Lav Sink
- Porcelain Toilet w/Foot Flush
- One Piece ABS Shower Surround
- Glass Shower Door
- Power Bath Vent
- 6-Gallon (Gas) D.S.I. Water Heater
- Demand Water Pump
- Skylight Over the Shower
- No Mess Termination w/Light, Shower, Pump Switch

ELECTRIC/HEATING/AC

- 30"-50 Amp Power Cord
- 55 Amp, 110/12-Volt Power Converter
- GFI Circuit
- Outside Recept (DS)
- Emergency Start Switch
- Lighted Trunk Boxes
- Patio Light
- 30,000 BTU E.I. Furnace
- (2) Two 13,500 BTU Ducted Roof Air Conditioners
- Single Coach Battery
- 5.5 Onan Generator
- Coach Command Center

OPTIONS

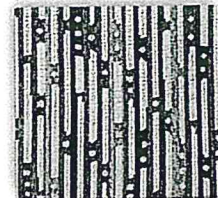
- Power Drop-Down Front Bunk Bed (NA 35LS)
- 2nd Coach Battery**
- Valve Stem Extenders
- 13" TV w/DVD Player in Each Bunk (34BH & 35BH)
- DVD Player in Bedroom
- 8 cu. ft. Double-Door Refrigerator
- 11 cu. ft. Double Door Residential Refrigerator / 1000W Inverter & (2) 6 V Batteries (NA 29DS & 34BH)

- 20 cu. ft. Double Door Residential Refrigerator / 1000W Inverter & (2) 6 V Batteries (34BH)
- Frameless Tinted Windows w/Safety Glass
- Dual Pane Windows
- Entertainment/Computer Hutch - IPO Euro Chair (34BH)
- Side Cameras
- Remote Exterior Heated Mirrors
- Outside Entertainment Center w/32" TV & DVD
- 6-Gallon (Gas/Elec.) D.S.I. Water Heater
- Diamond Shield Paint Protection (Required w/Full Paint)
- RVID (Mandatory TX, CA and FL)
- CSA Upfit
- CD-MVSA* (Canadian Motor Vehicle Safety Act)*

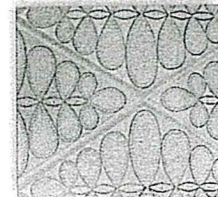
- * Mandatory for All Canadian Provinces
- ** Mandatory with Power Drop Down Front Bunk Bed

DÉCOR

- Interior Color Selections:



NORTH BRIDGE



PARCHMENT



SUN DRENCHED

SPECIFICATIONS

CLASS A GAS	29DS	32UD	34BH	35BH	35LS
Ford Engine V10 6.8L	362 hp	362 hp	362 hp	362 hp	362 hp
Wheelbase	228"	228"	228"	242"	242"
GVWR (lbs.)	20,500	20,500	20,500	22,000	22,000
GCWR (lbs.)	26,000	26,000	26,000	26,000	26,000
Fuel Capacity	80 gal.	80 gal.	80 gal.	80 gal.	80 gal.
Exterior Length	32' 6"	34' 6"	35' 6"	36' 10"	36' 10"
Exterior Height	12' 3"	12' 3"	12' 3"	12' 3"	12' 3"
Exterior Width	102"	102"	102"	102"	102"
Fresh Water	70 gal.	70 gal.	70 gal.	70 gal.	70 gal.
Gray Water	45 gal.	45 gal.	45 gal.	45/45 gal.	45 gal.
Black Water	45 gal.	45 gal.	45 gal.	45/45 gal.	45/45 gal.
Awning Size	18'	18'	12'	12'	18'



Learn More
Scan this barcode using a QR Reader on your smart phone to learn more about Forest River.



A Berkshire Hathaway company.

All information contained in this brochure is believed to be accurate at the time of publication. However, during the model year, it may be necessary to make revisions and Coachmen reserves the right to make all such changes without notice, including prices, colors, materials, equipment and specifications as well as the addition of new models and the discontinuance of models shown in this brochure. Therefore, please consult with your Coachmen dealer and confirm the existence of any materials, design or specifications that are material to your purchase decision. 4/14

©Copyright 2014 Coachmen RV a Division of Forest River Inc - All Rights Reserved.